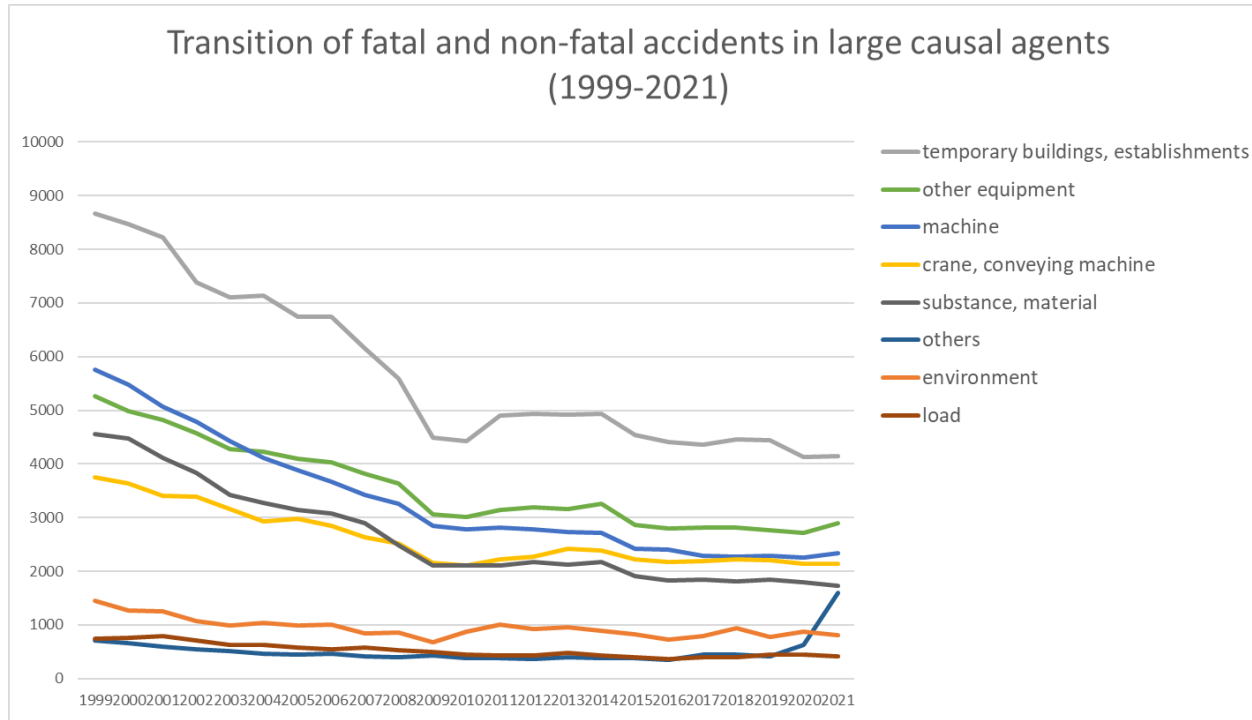
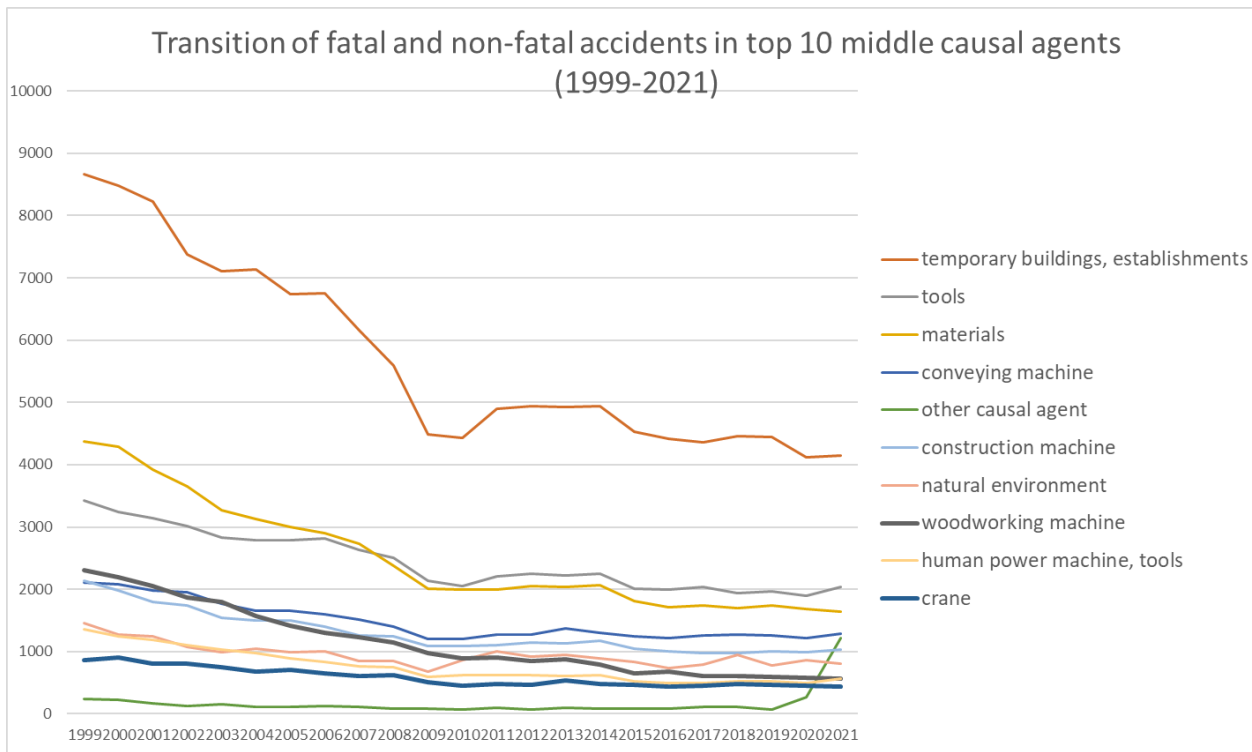


Transition of fatal and non-fatal accidents in each element like as causal agents, type of accidents, etc. in code no. 03 construction (1999-2021)

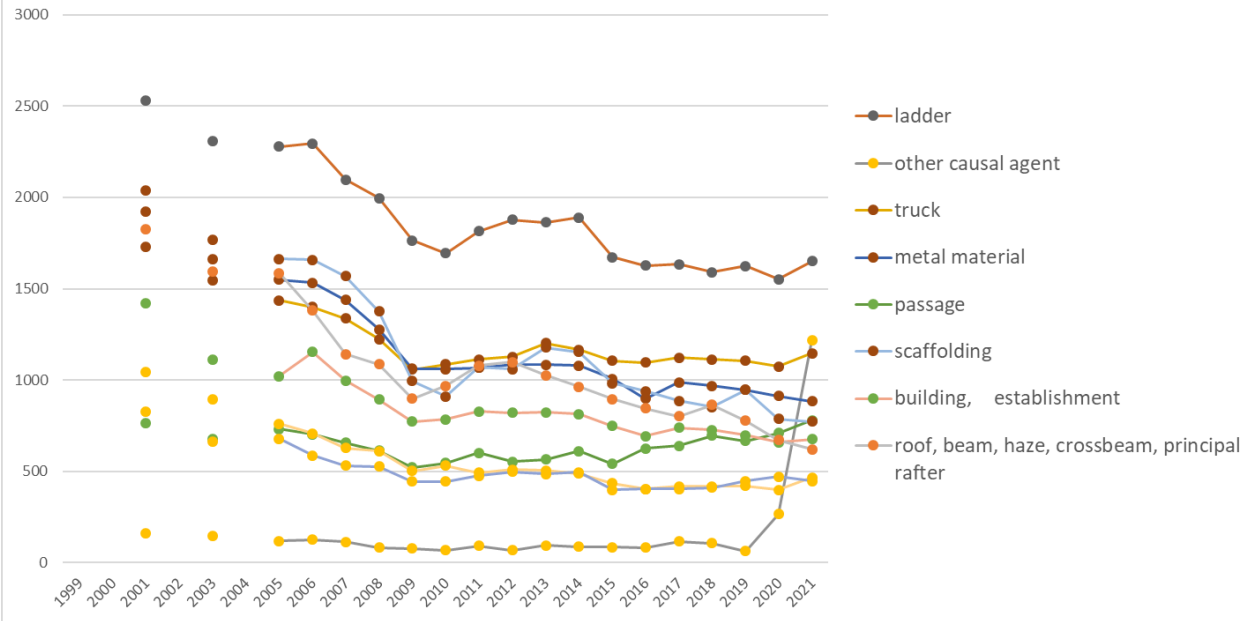


Transition of fatal and non-fatal accidents in large causal agents in code no. 03 construction (1999-2021)



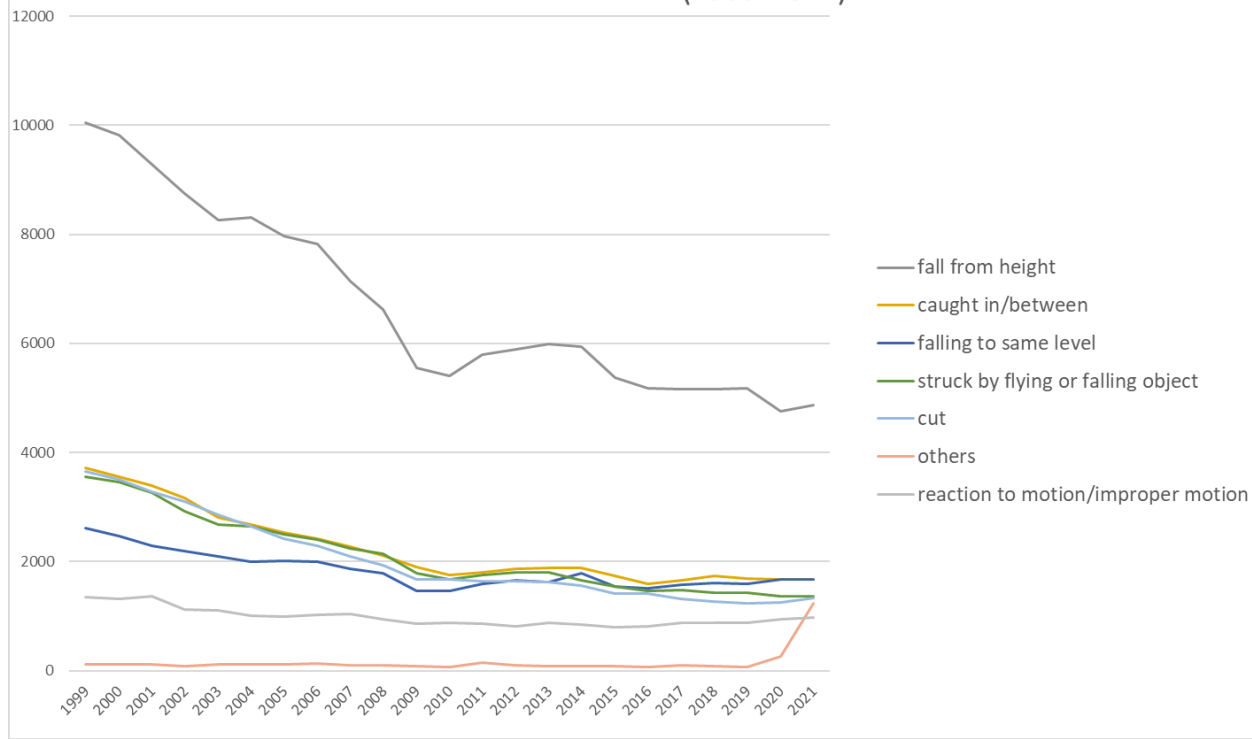
Transition of fatal and non-fatal accidents in middle causal agents in code no. 03 construction (1999-2021)

Transition of fatal and non-fatal accidents in top 10 small causal agents (1999-2021)



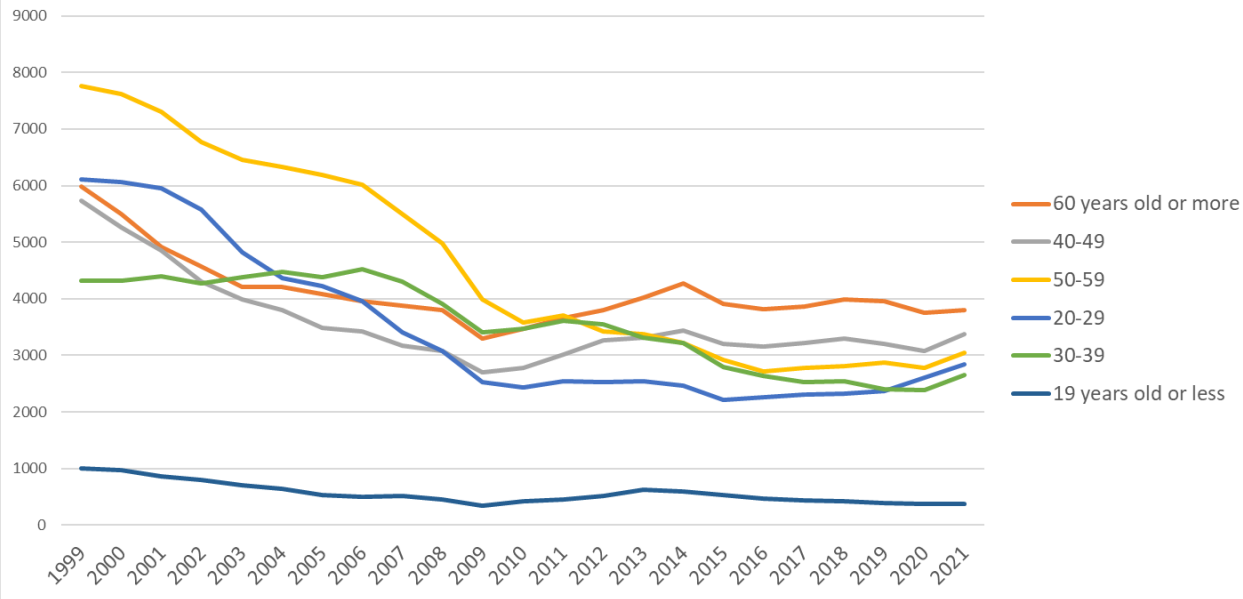
Transition of fatal and non-fatal accidents in small causal agents in code no. 03 construction (1999-2021)

Transition of fatal and non-fatal accidents in top 7 type of accidents
(1999-2021)



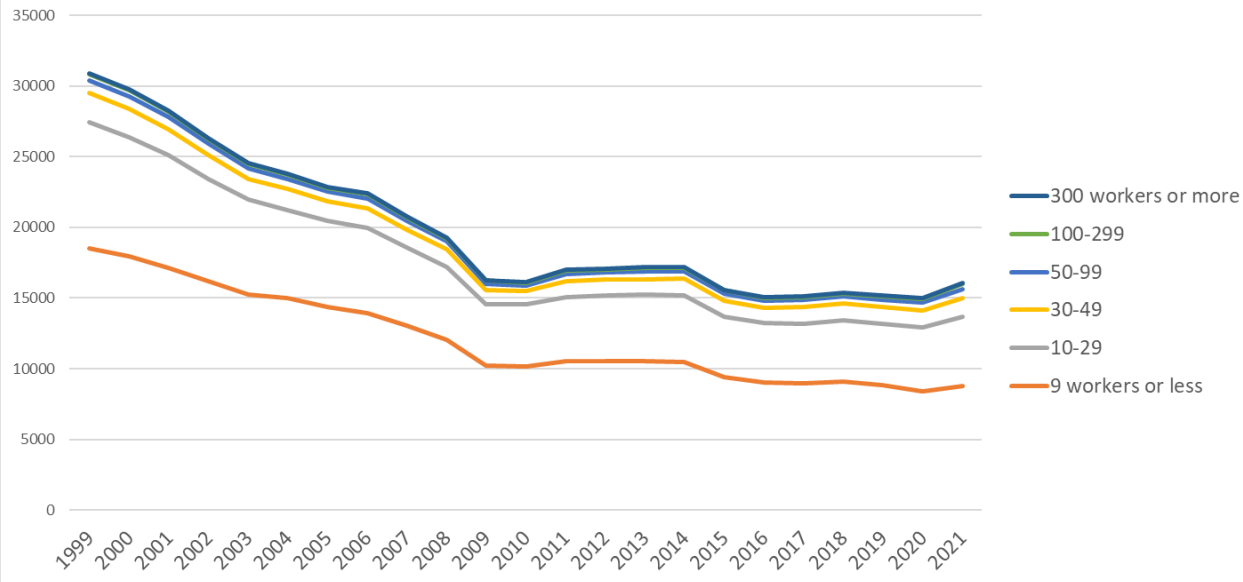
Transition of fatal and non-fatal accidents in type of accidents in code no. 03 construction (1999-2021)

Transition of fatal and non-fatal accidents in workers ages (1999-2021)



Transition of fatal and non-fatal accidents in workers ages in code no. 03 construction (1999-2021)

Transition of fatal and non-fatal accidents in workers scales (1999-2021)



Transition of fatal and non-fatal accidents in workers scales in code no. 03 construction (1999-2021)

04	struck by flying or falling object	3,548	3,464	3,260	2,925	2,678	2,646	2,502	2,412	2,238	2,150	1,785	1,672	1,763	1,801	1,802	1,655	1,545	1,457	1,478	1,432	1,431	1,370	1,363	48,377	struck by flying or falling object
08	cut	3,648	3,499	3,279	3,099	2,857	2,641	2,418	2,290	2,098	1,940	1,670	1,673	1,640	1,646	1,632	1,568	1,409	1,422	1,312	1,267	1,240	1,257	1,339	46,844	cut
90	others	115	124	112	81	111	124	114	136	105	98	78	69	150	96	86	78	87	68	95	77	72	270	1,236	3,582	others
19	reaction to motion/improper motion	1,351	1,325	1,369	1,127	1,110	1,009	995	1,020	1,036	947	860	882	865	812	873	844	793	813	880	875	885	947	981	22,599	reaction to motion/improper motion
06	crashed by	1,715	1,607	1,554	1,436	1,330	1,248	1,190	1,158	1,126	1,000	844	851	841	873	840	850	842	734	734	832	842	791	825	24,063	crashed by
03	crash	1,445	1,352	1,247	1,110	1,054	996	992	1,012	936	831	696	767	754	703	780	749	691	668	680	636	695	704	690	20,188	crash
17	traffic accident (public road)	903	811	779	787	767	686	737	720	605	588	464	526	563	631	624	671	594	658	587	598	559	542	500	14,900	traffic accident (public road)
05	collapse	1,030	998	918	944	817	767	742	758	732	660	537	508	556	538	557	569	482	475	497	489	482	452	447	14,955	collapse
11	contact to high/low-temperature	238	236	280	255	220	269	216	203	225	193	134	286	242	233	234	237	210	208	210	340	238	289	210	5,406	contact to high/low-temperature
09	injury to the sole of the foot	189	152	207	155	165	157	170	154	138	107	93	106	131	131	105	124	108	96	98	103	100	99	115	3,003	injury to the sole of the foot
12	contact to harmful substance	99	120	108	95	122	96	103	118	86	84	59	69	82	72	62	74	75	95	76	91	86	76	74	2,022	contact to harmful substance
13	electric shock	86	91	68	72	47	71	66	51	66	67	44	50	35	41	45	59	43	35	27	47	37	36	43	1,227	electric shock
99	unclassifiable	36	35	26	22	22	18	18	39	22	16	15	9	7	11	20	14	12	10	10	12	14	7	10	405	unclassifiable
10	drown	15	8	8	10	11	9	11	10	7	18	13	5	113	15	4	16	5	6	10	15	4	6	10	329	drown
18	traffic accident (others)	25	12	8	17	3	5	18	9	9	4	5	4	6	7	5	11	3	4	8	8	9	5	8	193	traffic accident (others)
14	explosion	36	24	39	19	12	22	24	17	19	14	14	21	6	17	11	10	8	4	10	7	5	11	7	357	explosion
16	fire	26	27	30	30	37	19	15	40	29	26	21	23	15	14	10	20	17	16	11	36	25	10	5	502	fire
15	burst	22	15	17	18	12	24	12	10	10	8	11	5	9	9	6	7	6	8	7	8	6	8	5	243	burst
	total	30,905	29,747	28,284	26,299	24,543	23,809	22,869	22,386	20,764	19,280	16,268	16,143	16,983	17,073	17,189	17,184	15,584	15,058	15,129	15,374	15,183	14,977	16,079	457,110	total

Transition of fatal and non-fatal accidents in workers ages in code no. 03 construction (1999-2021)

code	Age	1999	2000	2001	2002	2003	2004	2005	2006	2007	2008	2009	2010	2011	2012	2013	2014	2015	2016	2017	2018	2019	2020	2021	total	Age
6	60 years old or more	5,985	5,500	4,915	4,571	4,204	4,202	4,076	3,955	3,882	3,795	3,295	3,469	3,651	3,806	4,014	4,265	3,905	3,823	3,866	3,992	3,961	3,756	3,806	94,694	60 years old or more
4	40-49	5,735	5,262	4,852	4,305	3,991	3,793	3,480	3,426	3,168	3,069	2,698	2,771	3,013	3,263	3,305	3,432	3,206	3,160	3,212	3,292	3,197	3,077	3,371	82,078	40-49
5	50-59	7,756	7,622	7,305	6,769	6,449	6,330	6,181	6,015	5,497	4,978	3,995	3,581	3,711	3,416	3,379	3,218	2,927	2,715	2,781	2,815	2,875	2,782	3,039	106,136	50-59
2	20-29	6,107	6,067	5,947	5,580	4,827	4,371	4,223	3,958	3,404	3,083	2,531	2,435	2,540	2,532	2,541	2,466	2,209	2,258	2,309	2,325	2,362	2,606	2,836	79,517	20-29
3	30-39	4,313	4,321	4,399	4,278	4,376	4,480	4,377	4,527	4,304	3,902	3,403	3,468	3,615	3,542	3,319	3,216	2,801	2,642	2,523	2,536	2,402	2,380	2,652	81,776	30-39
1	19 years old or less	1,009	975	866	796	696	633	532	505	509	453	346	419	453	514	631	587	536	460	438	414	386	376	375	12,909	19 years old or less
	total	30,905	29,747	28,284	26,299	24,543	23,809	22,869	22,386	20,764	19,280	16,268	16,143	16,983	17,073	17,189	17,184	15,584	15,058	15,129	15,374	15,183	14,977	16,079	457,110	total

Transition of fatal and non-fatal accidents in workers scales in code no. 03 construction (1999-2021)

code	Workers scale	1999	2000	2001	2002	2003	2004	2005	2006	2007	2008	2009	2010	2011	2012	2013	2014	2015	2016	2017	2018	2019	2020	2021	total	Workers scale
1	9 workers or less	18,504	17,943	17,127	16,169	15,251	14,997	14,372	13,951	13,067	12,039	10,200	10,152	10,504	10,502	10,502	10,442	9,420	9,005	8,959	9,099	8,866	8,413	8,750	278,234	9 workers or less
2	10-29	8,919	8,432	7,987	7,243	6,688	6,245	6,119	6,024	5,538	5,172	4,356	4,384	4,560	4,688	4,718	4,739	4,270	4,210	4,234	4,313	4,329	4,527	4,947	126,642	10-29
3	30-49	2,072	1,986	1,841	1,690	1,477	1,491	1,343	1,383	1,235	1,236	993	937	1,144	1,094	1,098	1,178	1,106	1,066	1,170	1,176	1,171	1,184	1,280	30,351	30-49
4	50-99	899	914	844	796	734	711	677	701	606	543	482	420	511	511	557	544	531	501	494	514	511	529	627	14,157	50-99
5	100-299	434	394	403	341	326	307	300	267	250	236	189	198	218	226	264	229	206	234	223	217	229	250	371	6,312	100-299
6	300 workers or more	77	78	82	60	67	58	58	60	68	54	48	52	46	52	50	52	51	42	49	55	77	74	104	1,414	300 workers or more
	total	30,905	29,747	28,284	26,299	24,543	23,809	22,869	22,386	20,764	19,280	16,268	16,143	16,983	17,073	17,189	17,184	15,584	15,058	15,129	15,374	15,183	14,977	16,079	457,110	total

Transition of fatal and non-fatal accidents in months in code no. 03 construction (1999-2021)

code	Month	1999	2000	2001	2002	2003	2004	2005	2006	2007	2008	2009	2010	2011	2012	2013	2014	2015	2016	2017	2018	2019	2020	2021	total	Month
8	August	2,591	2,616	2,232	2,191	2,050	1,938	1,992	2,062	1,835	1,582	1,381	1,421	1,542	1,510	1,495	1,400	1,299	1,345	1,319	1,349	1,287	1,363	1,664	39,464	August
7	July	2,774	2,710	2,645	2,429	2,203	2,289	2,044	1,895	1,837	1,818	1,459	1,463	1,512	1,526	1,618	1,639	1,520	1,413	1,465	1,546	1,445	1,313	1,499	42,062	July
9	September	2,747	2,476	2,341	2,188	2,145	2,165	1,931	2,009	1,785	1,616	1,362	1,408	1,428	1,412	1,429	1,451	1,402	1,344	1,178	1,285	1,359	1,359	1,444	39,264	September

6	June	2,619	2,450	2,373	2,127	1,952	1,953	1,926	1,810	1,811	1,565	1,352	1,344	1,411	1,401	1,363	1,332	1,330	1,241	1,283	1,274	1,176	1,261	1,386	37,740	June
3	March	2,729	2,677	2,740	2,338	2,265	2,071	1,997	1,897	1,888	1,765	1,408	1,435	1,611	1,448	1,470	1,505	1,317	1,275	1,307	1,324	1,311	1,295	1,385	40,458	March
11	November	2,674	2,495	2,377	2,252	1,927	2,103	2,023	1,947	1,768	1,499	1,368	1,352	1,474	1,425	1,540	1,364	1,276	1,226	1,337	1,306	1,280	1,300	1,305	38,618	November
10	October	2,736	2,690	2,543	2,392	2,251	2,075	1,931	2,025	1,796	1,711	1,471	1,417	1,517	1,523	1,522	1,561	1,440	1,305	1,289	1,424	1,374	1,251	1,266	40,510	October
2	February	2,529	2,554	2,401	2,170	2,115	1,968	1,894	1,861	1,776	1,750	1,440	1,358	1,310	1,493	1,317	1,437	1,245	1,320	1,213	1,246	1,254	1,278	1,262	38,191	February
4	April	2,372	2,301	2,239	2,151	1,923	1,778	1,866	1,658	1,542	1,579	1,206	1,229	1,205	1,252	1,324	1,454	1,207	1,181	1,147	1,177	1,223	1,217	1,261	35,492	April
1	January	2,349	2,188	2,069	1,962	1,855	1,854	1,747	1,749	1,556	1,524	1,309	1,243	1,291	1,309	1,353	1,339	1,281	1,159	1,215	1,193	1,188	1,060	1,241	35,034	January
5	May	2,406	2,216	2,201	2,088	1,896	1,721	1,735	1,730	1,617	1,524	1,218	1,189	1,224	1,399	1,375	1,396	1,126	1,161	1,146	1,139	1,171	1,061	1,235	34,974	May
12	December	2,379	2,374	2,123	2,011	1,961	1,894	1,783	1,743	1,553	1,347	1,294	1,284	1,458	1,375	1,383	1,306	1,141	1,088	1,230	1,111	1,115	1,219	1,131	35,303	December
	total	30,905	29,747	28,284	26,299	24,543	23,809	22,869	22,386	20,764	19,280	16,268	16,143	16,983	17,073	17,189	17,184	15,584	15,058	15,129	15,374	15,183	14,977	16,079	457,110	total

Transition of fatal and non-fatal accidents in prefectures in code no. 03 construction (1999-2021)

code	Prefecture	1999	2000	2001	2002	2003	2004	2005	2006	2007	2008	2009	2010	2011	2012	2013	2014	2015	2016	2017	2018	2019	2020	2021	total	Prefecture
13	Tokyo	1,922	1,924	2,024		1,995		1,865	1,866	1,879	1,689	1,332	1,339	1,439	1,429	1,472	1,502	1,254	1,136	1,245	1,163	1,215	1,022	1,185	31,897	Tokyo
1	Hokkaido	1,897	1,787	1,616		1,386		1,354	1,312	1,093	983	892	922	882	960	1,026	1,017	992	910	879	966	938	903	959	23,674	Hokkaido
14	Kanagawa	1,519	1,523	1,485		1,365		1,220	1,294	1,208	1,069	851	890	914	907	871	857	781	821	730	727	808	824	814	21,478	Kanagawa
27	Osaka	1,712	1,732	1,737		1,423		1,255	1,273	1,205	1,193	945	871	874	877	816	836	722	681	660	785	799	677	796	21,869	Osaka
11	Saitama	983	1,037	1,002		1,018		942	932	997	893	747	737	783	748	755	857	684	604	657	650	611	618	720	16,975	Saitama
40	Fukuoka	1,253	1,226	1,132		975		1,066	946	906	811	672	657	644	672	686	717	620	631	641	669	571	621	710	16,826	Fukuoka
23	Aichi	1,228	1,199	1,232		995		951	981	840	834	703	677	701	627	711	712	668	643	674	673	645	723	691	17,108	Aichi
12	Chiba	953	995	997		904		823	840	794	764	690	676	667	663	714	714	604	558	591	566	608	672	617	15,410	Chiba
28	Hyogo	1,389	1,348	1,164		981		872	898	847	708	590	591	578	556	592	631	515	529	474	518	473	489	482	15,225	Hyogo
15	Niigata	971	896	873		663		797	766	639	629	543	542	505	523	523	451	432	390	373	407	398	392	480	12,193	Niigata
22	Shizuoka	977	966	861		748		709	715	695	681	542	529	522	538	545	512	430	436	421	442	467	459	428	12,623	Shizuoka
7	Fukushima	562	529	486		460		408	387	358	373	325	295	402	482	464	531	475	421	373	367	340	385	412	8,835	Fukushima
8	Ibaraki	623	560	528		447		457	406	389	366	319	307	464	438	358	375	350	364	380	330	296	295	387	8,439	Ibaraki
34	Hiroshima	811	789	759		596		566	513	504	432	364	339	363	347	366	331	324	337	314	373	337	363	375	9,503	Hiroshima
4	Miyagi	468	497	408		447		351	339	359	334	284	271	539	527	465	402	372	432	350	336	352	283	342	8,158	Miyagi

20	Nagano	649	580	583		501		407	385	378	338	293	298	276	283	279	325	326	270	261	283	281	282	305	7,583	Nagano
46	Kagoshima	466	468	376		374		372	349	307	285	240	242	263	267	309	267	290	314	312	294	312	305	299	6,711	Kagoshima
43	Kumamoto	534	473	397		383		346	339	334	274	286	274	251	273	321	266	286	339	401	335	295	315	288	7,010	Kumamoto
24	Mie	701	641	630		524		424	461	414	369	327	345	351	291	341	306	297	294	296	315	294	258	278	8,157	Mie
26	Kyoto	650	672	604		530		502	481	455	399	325	328	351	358	341	353	308	271	304	296	268	295	275	8,366	Kyoto
2	Aomori	438	377	419		315		257	243	205	211	190	201	233	235	221	233	188	228	223	213	235	207	270	5,342	Aomori
21	Gifu	688	657	598		537		416	393	377	349	312	300	260	269	276	265	254	230	233	254	249	249	267	7,433	Gifu
33	Okayama	604	573	555		438		427	383	371	320	254	279	278	285	296	310	273	236	264	260	270	248	266	7,190	Okayama
3	Iwate	423	416	394		315		284	278	257	228	225	196	328	255	302	292	267	263	285	269	256	229	265	6,027	Iwate
10	Gunma	622	582	527		424		362	352	334	324	271	263	249	265	279	292	246	209	238	270	237	242	262	6,850	Gunma
6	Yamagata	451	436	384		318		322	292	238	223	179	232	222	261	239	232	214	195	196	256	175	194	246	5,505	Yamagata
42	Nagasaki	456	406	369		316		248	302	249	194	196	185	193	209	175	215	200	197	201	207	205	224	236	5,183	Nagasaki
9	Tochigi	412	403	368		309		302	286	280	303	246	244	264	271	245	214	240	242	211	193	209	200	227	5,669	Tochigi
5	Akita	439	354	393		327		290	333	242	238	228	209	224	236	229	248	203	190	199	217	209	200	227	5,435	Akita
38	Ehime	549	506	496		386		335	314	274	235	180	205	197	234	203	181	196	175	199	224	183	192	220	5,684	Ehime
35	Yamaguchi	421	422	372		341		306	293	252	267	191	209	248	205	210	181	198	260	208	175	195	185	218	5,357	Yamaguchi
16	Toyama	420	366	380		270		317	250	240	211	200	196	209	238	184	177	188	162	171	177	182	188	214	4,940	Toyama
47	Okinawa	140	167	130		129		167	138	150	169	165	153	164	169	156	189	172	152	212	192	212	178	206	3,510	Okinawa
44	Oita	564	480	453		401		355	335	309	270	238	214	227	217	255	255	210	228	207	225	222	219	201	6,085	Oita
45	Miyazaki	357	341	311		257		263	288	246	246	179	215	190	205	188	204	148	189	189	180	198	245	190	4,829	Miyazaki
18	Fukui	285	281	254		204		204	198	183	173	133	147	152	150	113	121	145	104	113	146	158	144	177	3,585	Fukui
25	Shiga	286	279	262		255		191	257	202	227	159	137	153	162	144	155	149	118	124	127	148	148	168	3,851	Shiga
29	Nara	396	342	347		309		259	236	208	226	207	181	162	174	167	173	134	132	134	136	135	136	163	4,357	Nara
37	Kagawa	319	274	256		226		268	213	188	161	148	155	131	138	159	136	110	138	139	154	137	107	156	3,713	Kagawa
41	Saga	238	250	233		196		203	190	165	162	151	145	157	160	208	172	179	153	165	161	152	195	155	3,790	Saga
30	Wakayama	453	378	360		295		274	285	237	203	179	192	174	211	192	167	166	158	130	140	145	135	154	4,628	Wakayama
36	Tokushima	349	324	305		249		246	224	209	208	162	166	162	150	163	163	155	157	150	125	147	157	154	4,125	Tokushima
39	Kochi	448	392	362		272		274	219	218	192	146	156	169	163	177	155	176	158	173	150	163	164	150	4,477	Kochi

17	Ishikawa	202	245	206		183		145	164	125	142	175	139	140	137	129	158	125	118	135	147	141	126	143	3,225	Ishikawa
32	Shimane	272	241	276		224		202	173	168	153	127	116	134	114	127	118	106	109	95	96	108	101	125	3,185	Shimane
19	Yamanashi	240	244	220		188		142	160	138	142	94	120	107	116	121	132	139	103	104	101	106	95	96	2,908	Yamanashi
31	Tottori	165	169	160		144		123	104	98	79	63	58	87	78	76	84	73	73	95	84	98	88	80	2,079	Tottori
	total	30,905	29,747	28,284		24,543		22,869	22,386	20,764	19,280	16,268	16,143	16,983	17,073	17,189	17,184	15,584	15,058	15,129	15,374	15,183	14,977	16,079	407,002	total

Data source : <https://anzeninfo.mhlw.go.jp/user/anzen/tok/anst00.htm>

Return to https://www.jisha.or.jp/english/statistics/202211_23.html