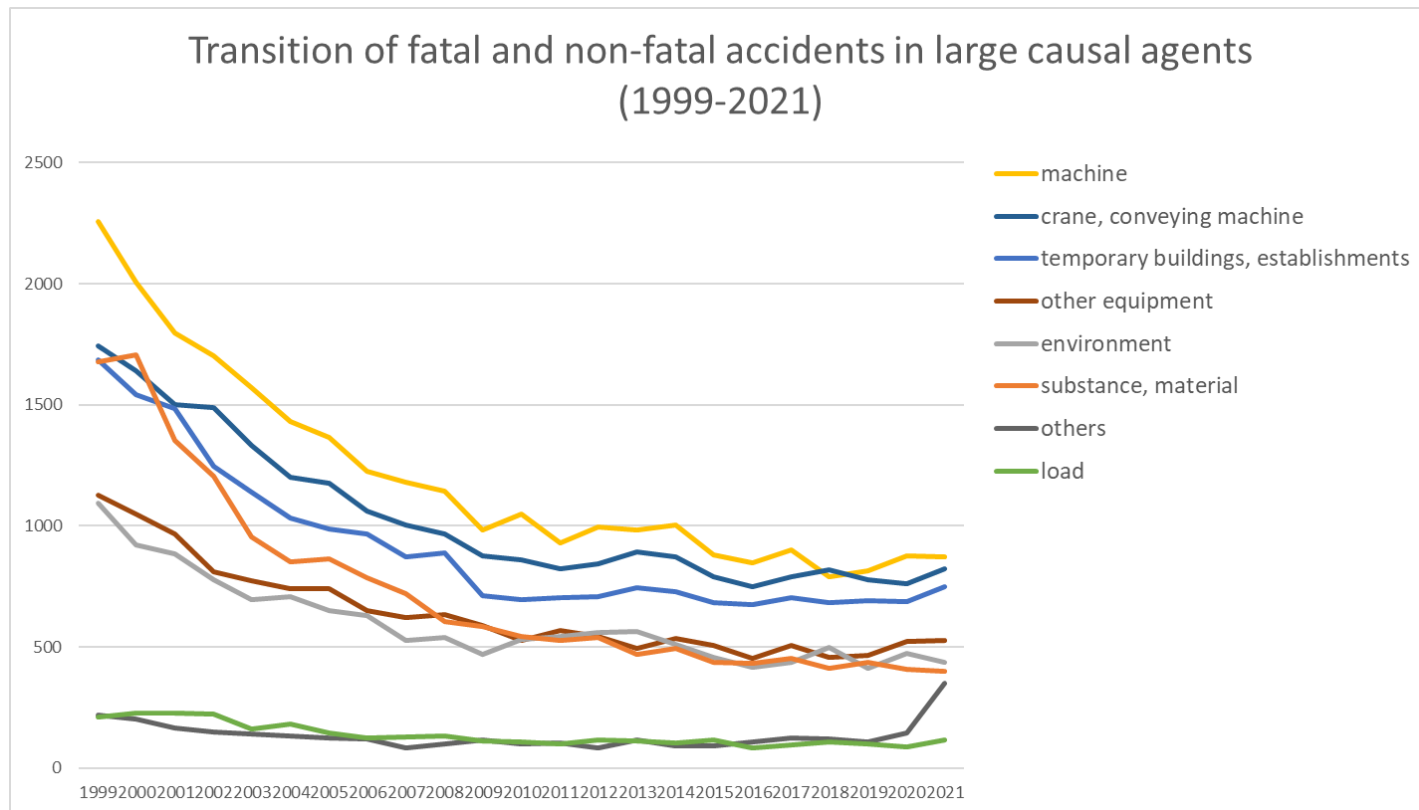
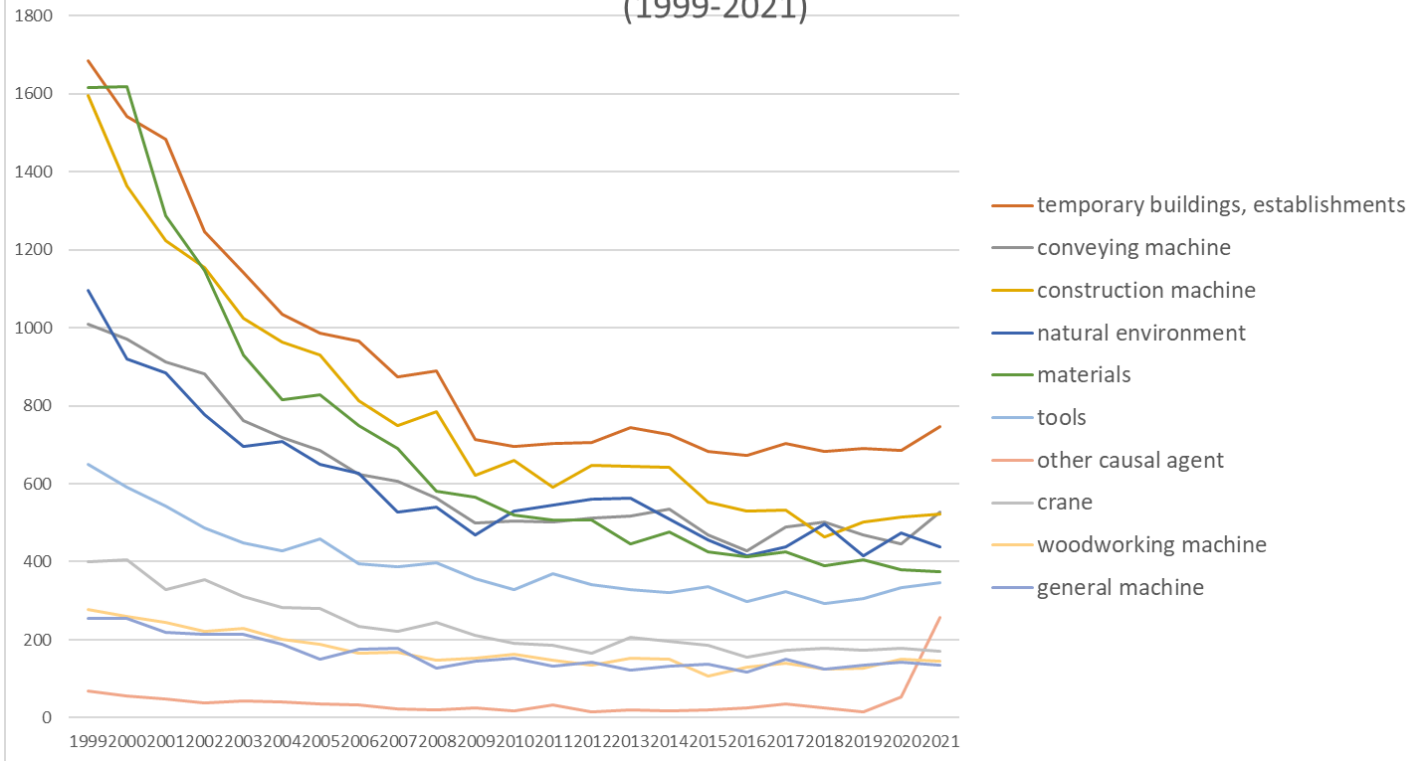


Transition of fatal and non-fatal accidents in each element like as causal agents, type of accidents, etc. in code no. 0301 civil engineering work (1999-2021)



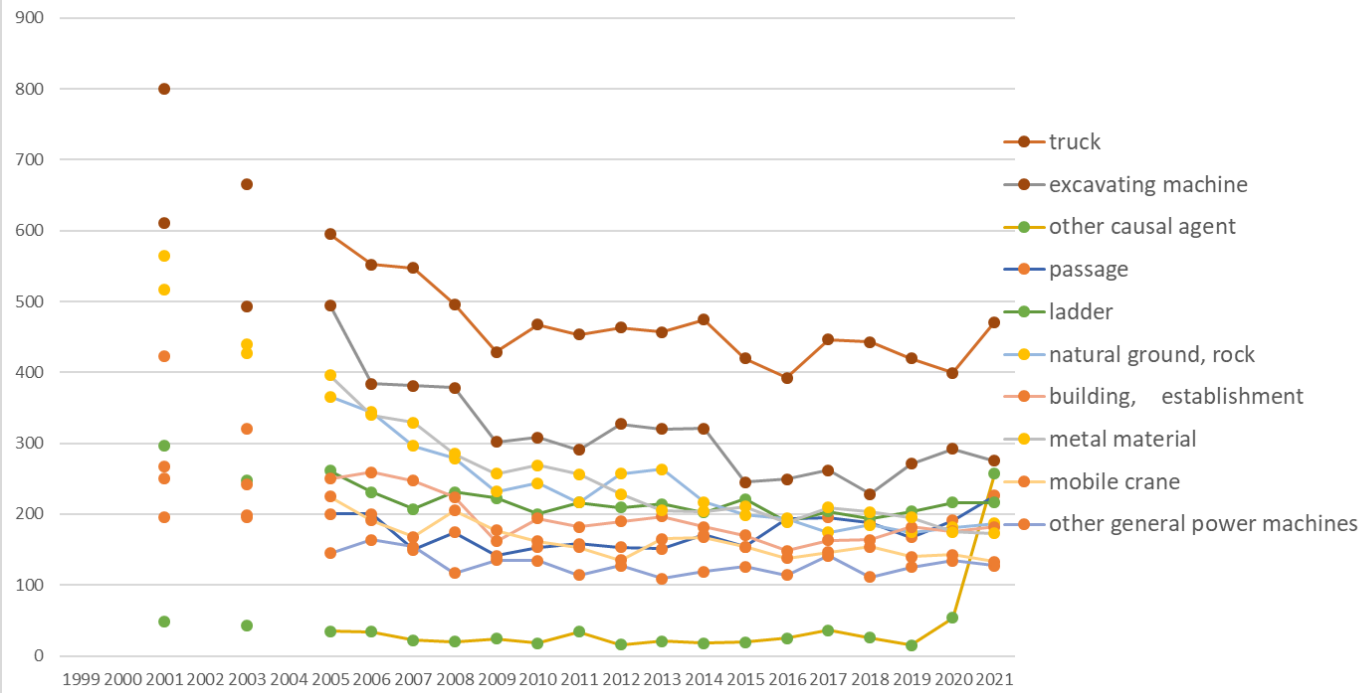
Transition of fatal and non-fatal accidents in large causal agents in code no. 0301 civil engineering work (1999-2021)

Transition of fatal and non-fatal accidents in top 10 middle causal agents
(1999-2021)



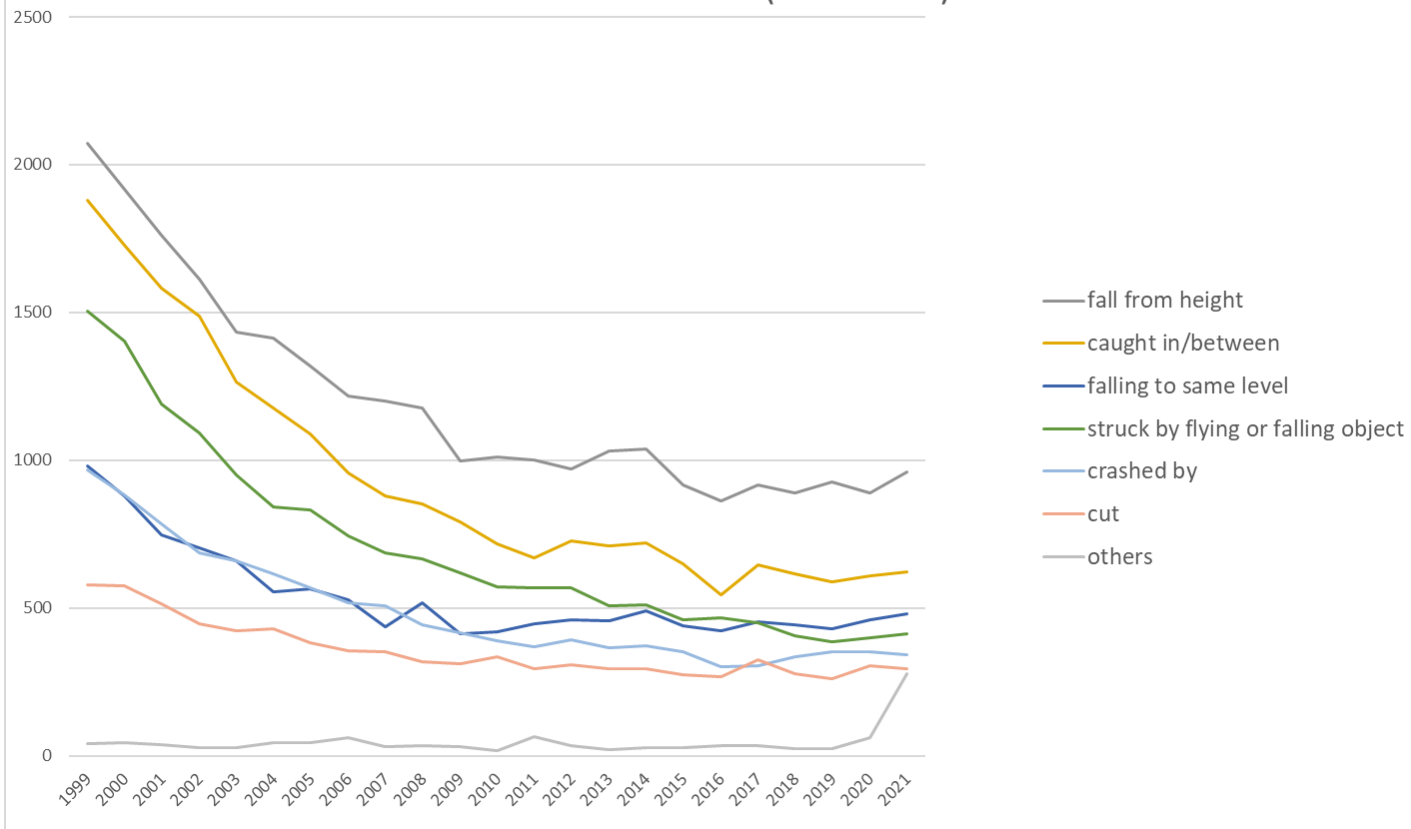
Transition of fatal and non-fatal accidents in middle causal agents in code no. 0301 civil engineering work (1999-2021)

Transition of fatal and non-fatal accidents in top 10 small causal agents (1999-2021)



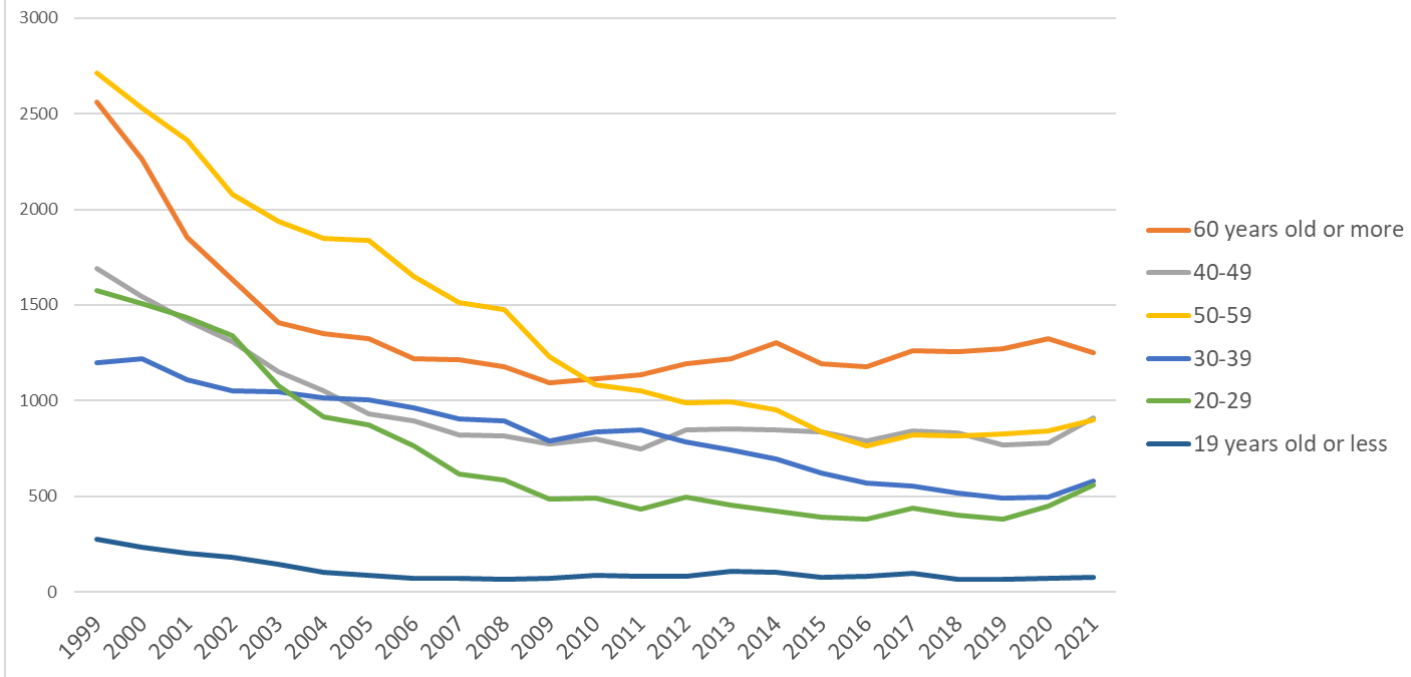
Transition of fatal and non-fatal accidents in small causal agents in code no. 0301 civil engineering work (1999-2021)

Transition of fatal and non-fatal accidents in top 7 type of accidents
(1999-2021)



Transition of fatal and non-fatal accidents in type of accidents in code no. 0301 civil engineering work (1999-2021)

Transition of fatal and non-fatal accidents in workers ages (1999-2021)



Transition of fatal and non-fatal accidents in workers ages in code no. 0301 civil engineering work (1999-2021)

6	300 workers or more	8	16	10	12	11	6	9	7	8	10	4	6	9	4	1	3	4	4	6	6	7	8	6	165	300 workers or more
	total	10,014	9,292	8,378	7,602	6,772	6,282	6,053	5,564	5,141	5,017	4,446	4,415	4,301	4,392	4,374	4,331	3,956	3,760	4,015	3,889	3,808	3,963	4,277	124,042	total

Transition of fatal and non-fatal accidents in months in code no. 0301 civil engineering work (1999-2021)

code	Month	1999	2000	2001	2002	2003	2004	2005	2006	2007	2008	2009	2010	2011	2012	2013	2014	2015	2016	2017	2018	2019	2020	2021	total	Month
7	July	859	797	711	648	611	522	504	439	430	452	362	352	325	362	412	434	371	361	395	385	371	300	397	10,800	July
8	August	810	765	657	617	523	449	478	467	436	390	354	354	390	371	367	338	340	315	334	337	327	359	392	10,170	August
2	February	923	921	767	769	719	648	569	590	509	539	444	431	375	454	362	402	323	353	370	349	337	363	387	11,904	February
1	January	862	842	709	662	598	624	518	510	436	465	421	387	406	392	388	388	358	304	362	335	331	273	377	10,948	January
9	September	866	728	655	617	563	507	471	461	397	402	353	373	344	337	382	333	342	310	266	310	316	357	371	10,061	September
10	October	857	805	744	679	582	555	507	501	443	459	404	394	388	377	364	406	359	327	350	380	356	361	368	10,966	October
3	March	960	925	919	726	689	660	589	489	499	492	410	479	439	401	420	389	335	315	324	346	327	341	357	11,831	March
11	November	914	780	724	686	526	566	587	521	450	374	405	360	407	360	417	334	363	319	378	334	330	396	349	10,880	November
6	June	729	676	615	565	490	466	483	374	392	349	336	325	324	305	300	288	318	292	321	303	275	313	343	9,182	June
12	December	818	797	710	597	560	498	503	457	454	390	376	368	350	413	369	355	312	282	352	262	303	341	331	10,198	December
5	May	705	642	548	516	447	371	413	381	358	346	313	307	288	318	291	349	263	274	292	283	269	270	326	8,570	May
4	April	711	614	619	520	464	416	431	374	337	359	268	285	265	302	302	315	272	308	271	265	266	289	279	8,532	April
	total	10,014	9,292	8,378	7,602	6,772	6,282	6,053	5,564	5,141	5,017	4,446	4,415	4,301	4,392	4,374	4,331	3,956	3,760	4,015	3,889	3,808	3,963	4,277	124,042	total

Transition of fatal and non-fatal accidents in prefectures in code no. 0301 civil engineering work (1999-2021)

code	Prefecture	1999	2000	2001	2002	2003	2004	2005	2006	2007	2008	2009	2010	2011	2012	2013	2014	2015	2016	2017	2018	2019	2020	2021	total	Prefecture
1	Hokkaido	721	692	613		475		441	435	325	287	315	311	274	291	362	318	316	269	302	338	279	320	359	8,043	Hokkaido
13	Tokyo	424	373	330		343		335	321	277	307	242	238	230	254	225	230	214	180	229	173	171	179	201	5,476	Tokyo
14	Kanagawa	384	395	357		317		289	301	277	244	194	222	241	175	170	177	167	190	183	178	183	193	190	5,027	Kanagawa

40	Fukuoka	376	371	323		264		251	229	225	212	179	176	168	173	183	181	168	153	172	180	130	149	189	4,452	Fukuoka
23	Aichi	324	345	304		257		200	178	205	200	187	185	149	152	155	169	145	130	152	149	128	142	148	4,004	Aichi
11	Saitama	272	250	211		209		203	163	164	200	172	167	134	146	137	168	147	109	135	135	123	129	147	3,521	Saitama
12	Chiba	251	202	212		218		204	197	160	187	172	172	150	155	182	161	127	138	127	148	130	146	142	3,581	Chiba
15	Niigata	358	316	279		204		272	235	181	168	153	145	138	156	142	134	110	121	83	119	91	98	138	3,641	Niigata
7	Fukushima	208	193	146		129		106	95	118	124	98	99	105	137	119	157	114	95	94	97	85	99	134	2,552	Fukushima
46	Kagoshima	213	240	175		176		167	163	136	114	107	119	110	118	116	92	103	129	118	104	116	112	120	2,848	Kagoshima
4	Miyagi	156	156	129		130		76	94	95	101	77	75	134	141	129	123	109	149	123	123	111	94	112	2,437	Miyagi
34	Hiroshima	286	278	242		185		167	141	134	111	110	93	96	87	96	69	69	65	87	98	87	114	104	2,719	Hiroshima
20	Nagano	251	217	204		161		121	99	109	106	107	90	83	82	82	110	90	82	83	81	95	89	103	2,445	Nagano
28	Hyogo	372	360	307		227		215	203	176	155	125	140	140	147	144	137	97	106	114	102	99	82	102	3,550	Hyogo
22	Shizuoka	298	307	255		206		188	165	191	164	145	152	133	125	117	131	123	107	102	103	115	124	102	3,353	Shizuoka
27	Osaka	263	249	254		218		185	168	190	196	156	124	117	114	109	130	114	86	85	107	79	97	102	3,143	Osaka
3	Iwate	156	166	153		113		89	86	76	60	67	63	96	73	83	100	90	82	102	99	100	83	94	2,031	Iwate
8	Ibaraki	196	141	135		119		101	75	77	85	74	74	99	109	101	78	82	80	96	73	68	70	85	2,018	Ibaraki
2	Aomori	159	137	139		96		86	64	58	66	61	64	83	85	70	66	58	72	81	61	73	70	82	1,731	Aomori
42	Nagasaki	185	177	150		107		93	86	72	66	67	80	54	62	54	73	63	53	53	63	60	61	80	1,759	Nagasaki
21	Gifu	264	249	215		189		112	110	89	102	84	83	62	83	79	75	83	63	76	73	71	86	79	2,327	Gifu
43	Kumamoto	211	168	144		125		100	92	95	75	92	99	65	73	96	87	65	79	99	80	89	90	79	2,103	Kumamoto
33	Okayama	217	210	176		127		137	89	93	83	74	74	66	80	92	71	58	59	75	64	60	50	77	2,032	Okayama
10	Gunma	230	212	187		140		87	82	79	97	90	85	67	56	69	59	61	64	61	65	67	69	76	2,003	Gunma
6	Yamagata	154	145	131		109		87	77	80	58	54	81	74	65	60	76	71	64	75	69	54	68	75	1,727	Yamagata
18	Fukui	121	110	105		82		65	57	52	67	43	41	55	53	41	40	51	32	42	40	62	54	74	1,287	Fukui
38	Ehime	237	234	226		149		144	103	95	83	67	63	62	68	63	64	50	65	65	82	56	54	73	2,103	Ehime
5	Akita	151	107	147		98		95	87	63	74	80	59	58	73	85	68	76	50	60	65	68	78	73	1,715	Akita

45	Miyazaki	153	160	147		83		90	116	95	104	64	82	73	76	71	55	45	62	55	53	75	84	69	1,812	Miyazaki
44	Oita	232	179	171		129		118	91	102	97	70	77	66	73	98	81	72	86	84	90	84	64	68	2,132	Oita
39	Kochi	228	193	170		114		110	93	94	73	51	59	82	72	82	73	79	69	73	62	71	81	68	1,997	Kochi
35	Yamaguchi	140	137	142		101		91	83	89	85	67	68	78	66	59	52	55	65	71	44	56	53	66	1,668	Yamaguchi
24	Mie	259	207	214		155		112	103	109	95	82	99	85	84	91	85	80	79	76	81	79	65	65	2,305	Mie
36	Tokushima	156	133	130		81		104	99	82	77	59	57	59	41	41	57	49	52	57	36	50	63	58	1,541	Tokushima
9	Tochigi	142	135	106		66		64	61	62	69	63	53	52	56	46	40	56	44	42	37	55	48	57	1,354	Tochigi
16	Toyama	145	140	120		87		87	68	70	56	74	67	67	85	51	64	53	43	49	45	55	66	51	1,543	Toyama
26	Kyoto	160	153	142		88		108	109	91	68	79	54	67	85	60	68	69	47	67	50	48	62	50	1,725	Kyoto
32	Shimane	101	106	124		87		65	57	59	62	41	42	49	43	46	35	36	33	31	37	43	29	48	1,174	Shimane
29	Nara	136	91	112		94		67	70	54	59	68	55	47	56	44	51	31	33	35	28	41	39	46	1,257	Nara
37	Kagawa	85	70	48		57		82	54	40	47	40	43	35	42	37	25	25	34	36	37	36	42	46	961	Kagawa
30	Wakayama	184	139	131		102		90	105	82	65	72	62	73	77	80	59	63	56	41	37	45	50	45	1,658	Wakayama
25	Shiga	86	89	66		69		41	52	40	61	41	27	27	31	25	31	30	23	21	25	29	28	42	884	Shiga
17	Ishikawa	74	74	57		64		39	41	31	41	48	43	41	34	27	38	29	28	30	29	46	37	40	891	Ishikawa
41	Saga	79	97	66		56		52	44	42	46	47	55	45	41	63	59	53	36	59	44	50	59	38	1,131	Saga
47	Okinawa	45	38	30		30		33	24	31	31	21	33	42	32	22	29	36	31	38	30	39	31	34	680	Okinawa
19	Yamanashi	100	102	97		83		49	60	47	60	40	41	40	36	42	51	46	37	44	36	32	30	25	1,098	Yamanashi
31	Tottori	71	49	56		53		35	39	29	29	27	24	30	29	28	34	28	30	32	19	24	32	21	719	Tottori
	total	10,014	9,292	8,378		6,772		6,053	5,564	5,141	5,017	4,446	4,415	4,301	4,392	4,374	4,331	3,956	3,760	4,015	3,889	3,808	3,963	4,277	110,158	total

Data source : <https://anzeninfo.mhlw.go.jp/user/anzen/tok/anst00.htm>

Return to https://www.jisha.or.jp/english/statistics/202211_23.html