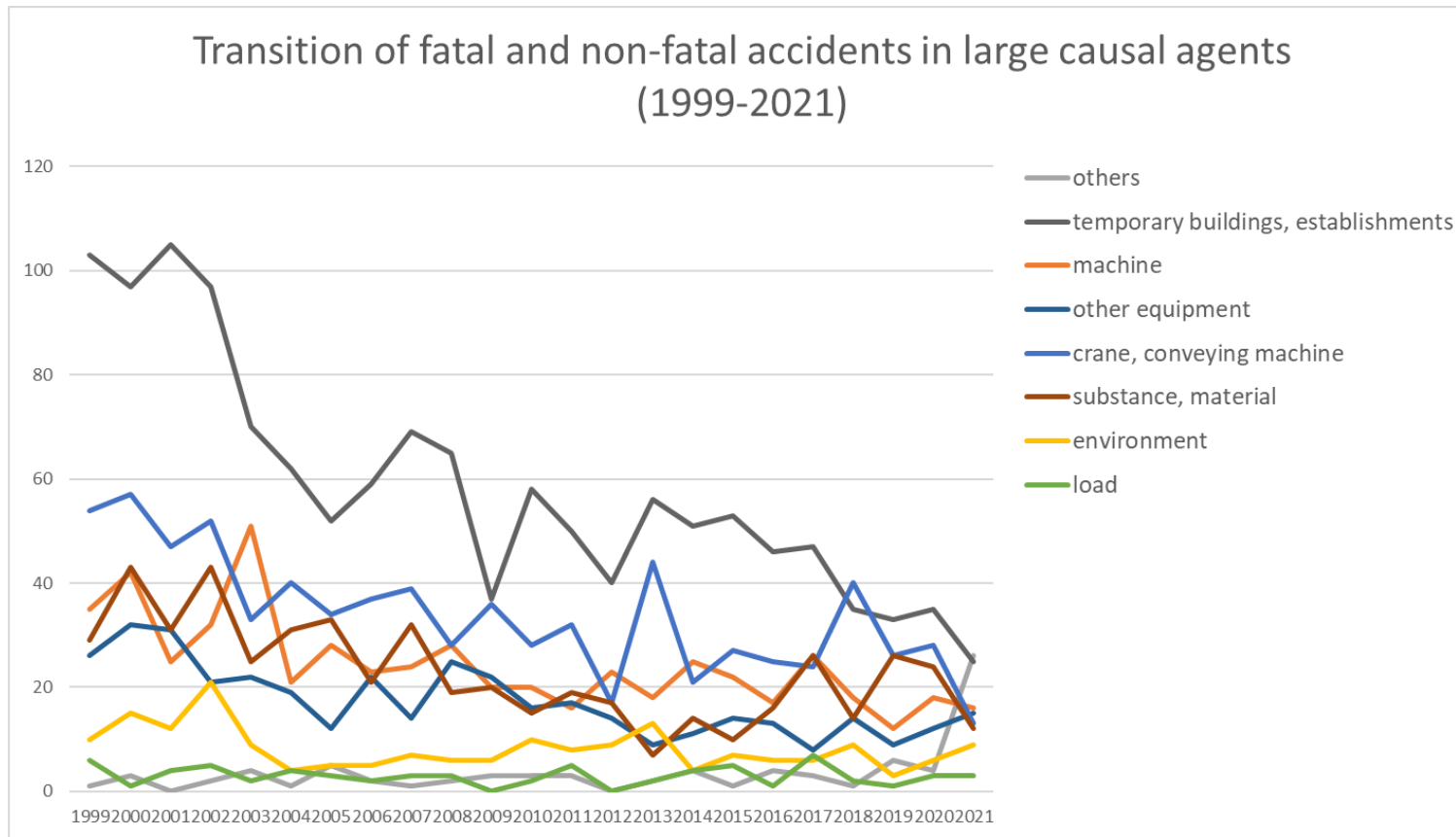
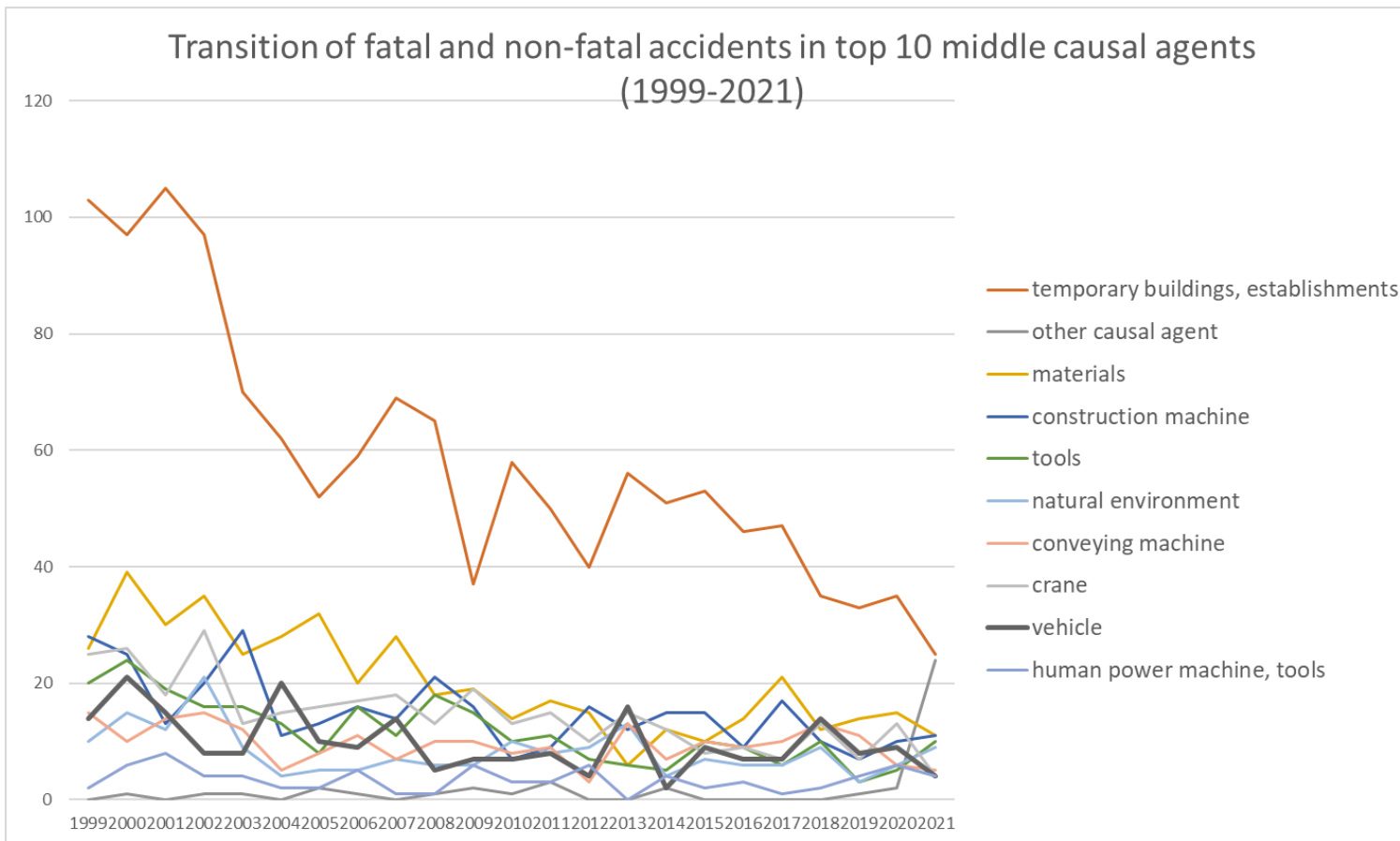


Transition of fatal and non-fatal accidents in each element like as causal agents, type of accidents, etc. in code no. 030105 bridge construction work (1999-2021)

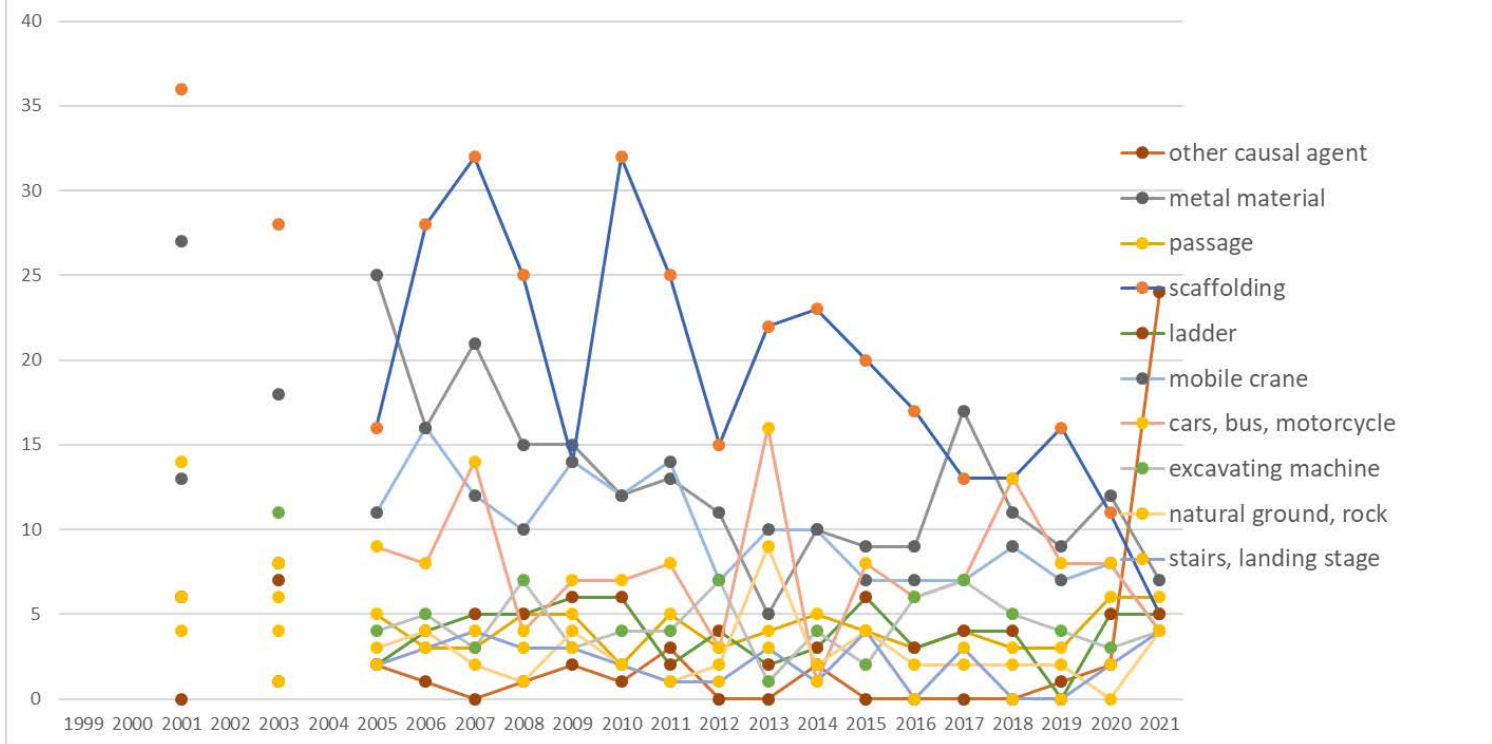


Transition of fatal and non-fatal accidents in large causal agents in code no. 030105 bridge construction work (1999-2021)



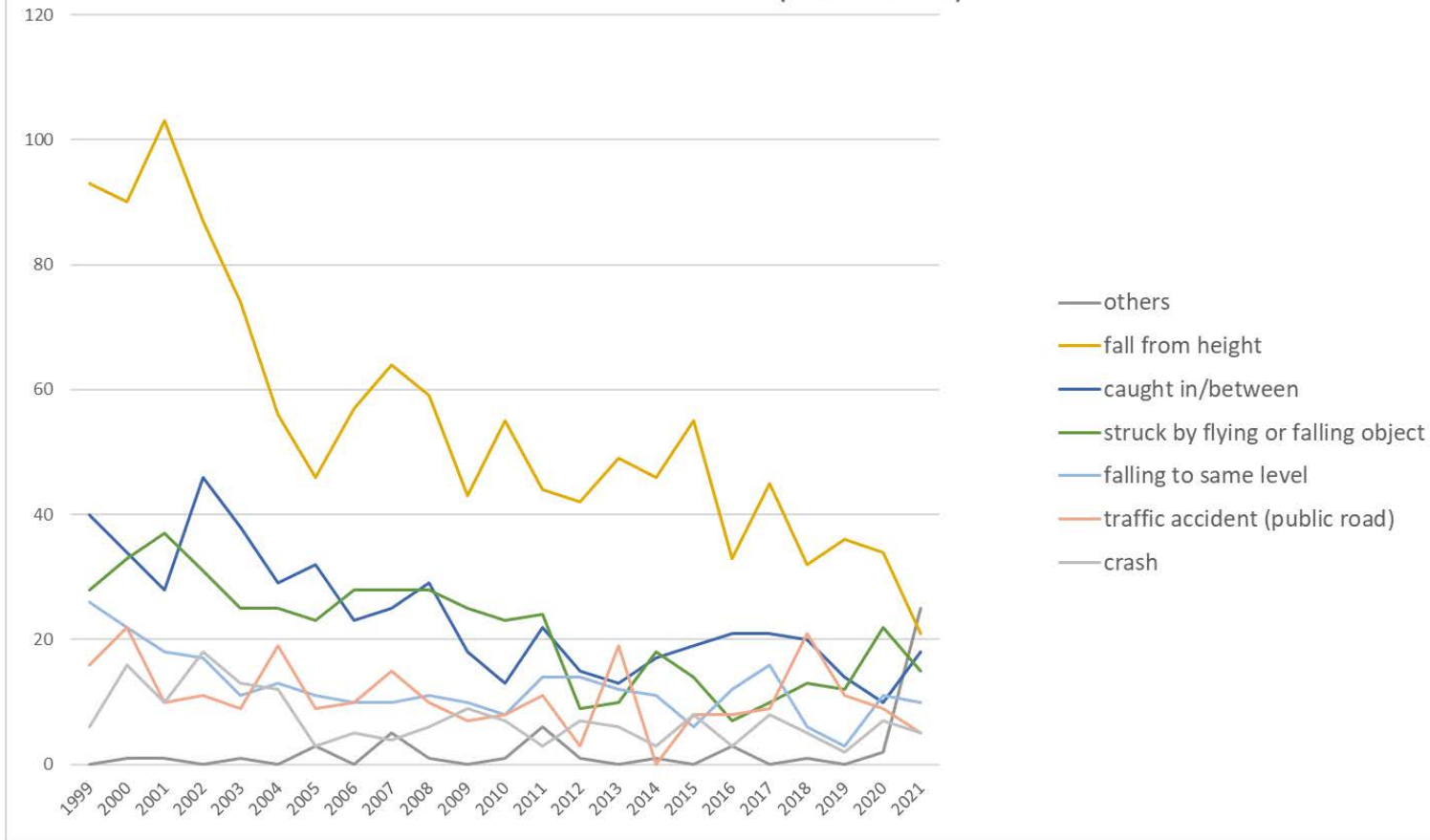
Transition of fatal and non-fatal accidents in middle causal agents in code no. 030105 bridge construction work (1999-2021)

Transition of fatal and non-fatal accidents in top 10 small causal agents (1999-2021)



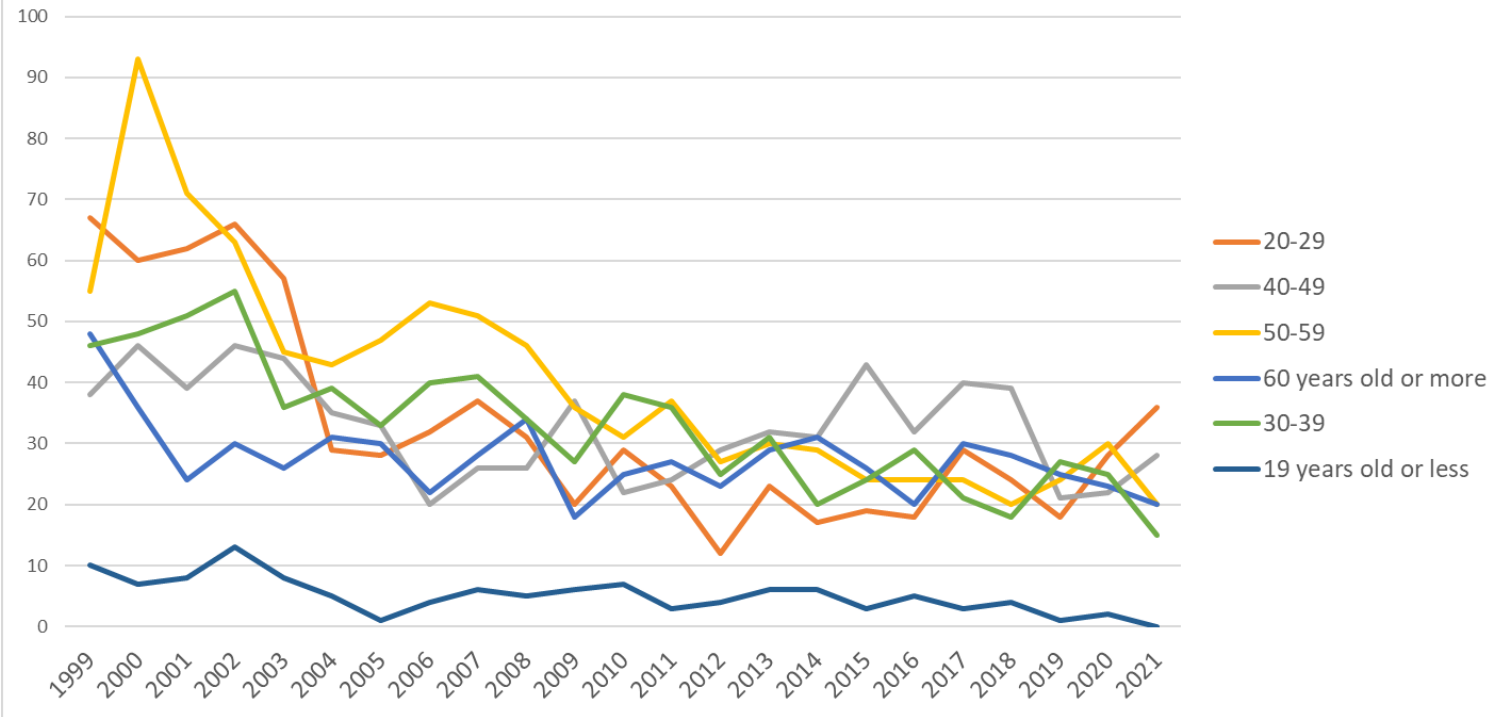
Transition of fatal and non-fatal accidents in small causal agents in code no. 030105 bridge construction work (1999-2021)

Transition of fatal and non-fatal accidents in top 7 type of accidents
(1999-2021)



Transition of fatal and non-fatal accidents in type of accidents in code no. 030105 bridge construction work (1999-2021)

Transition of fatal and non-fatal accidents in workers ages (1999-2021)



Transition of fatal and non-fatal accidents in workers ages in code no. 030105 bridge construction work (1999-2021)

2	February	24	34	24	27	16	10	21	10	13	21	14	9	14	9	7	13	10	14	14	11	5	10	17	347	February
1	January	25	25	26	19	25	41	9	15	8	12	18	17	14	21	9	12	8	5	17	8	6	9	11	360	January
10	October	17	33	28	30	21	16	14	27	19	10	9	9	16	8	18	17	12	17	15	14	11	11	10	382	October
3	March	34	27	24	31	24	25	12	16	23	10	13	19	8	5	17	17	6	13	12	12	7	14	10	379	March
12	December	23	33	24	23	16	17	18	17	25	11	15	21	16	14	10	14	20	11	10	13	8	7	10	376	December
5	May	10	19	21	15	12	6	15	8	9	14	15	12	11	9	6	8	13	11	6	15	8	12	10	265	May
11	November	30	22	21	33	15	10	18	14	15	14	5	20	24	9	15	14	20	4	21	7	20	13	9	373	November
7	July	16	28	19	23	13	6	12	18	12	19	14	9	6	9	16	10	13	5	14	7	13	9	8	299	July
9	September	32	19	12	24	23	16	15	15	21	19	11	10	8	9	23	5	10	12	13	7	7	18	7	336	September
6	June	14	17	18	11	15	16	17	7	16	11	9	8	9	7	13	9	11	7	8	23	6	9	5	266	June
4	April	21	19	17	17	17	10	8	12	15	9	10	10	13	9	7	9	10	20	9	5	11	11	4	273	April
	total	264	290	255	273	216	182	172	171	189	176	144	152	150	120	151	134	139	128	147	133	116	130	119	3,951	total

Transition of fatal and non-fatal accidents in prefectures in code no. 030105 bridge construction work (1999-2021)

code	Prefecture	1999	2000	2001	2002	2003	2004	2005	2006	2007	2008	2009	2010	2011	2012	2013	2014	2015	2016	2017	2018	2019	2020	2021	total	Prefecture
1	Hokkaido	25	18	11		14		8	10	14	7	3	11	17	12	25	7	11	12	12	8	4	7	9	245	Hokkaido
22	Shizuoka	7	16	23		14		10	14	8	10	12	5	4	4	5	6	7	6	6	5	13	10	8	193	Shizuoka
30	Wakayama	2	5	5		5		5	10	3		6	3	7	1	1	7	5	1	2	1	1	3	8	81	Wakayama
13	Tokyo	15	18	10		8		12	9	10	12	5	10	9	6	2	6	6	7	6	1	6	4	7	169	Tokyo
4	Miyagi	2	7	3		2		4	4	1	8	2	2	4	1	5	6	6	5	6	4	2	1	6	81	Miyagi
40	Fukuoka	10	9	9		10		13	9	15	10	8	3	3	4	7	5	4	4	4	6	3	4	5	145	Fukuoka
28	Hyogo	12	14	10		3		3	3	9	3	4	8	6	4	8	4	2	13	3	1		2	5	117	Hyogo
21	Gifu	6	10	8		12		4	3	3	1		4	6	6	3	5	4	2	8	3	3	6	5	102	Gifu
23	Aichi	19	20	30		24		9	7	6	6	8	13	7	4	9	5	5	6	7	6	10	6	4	211	Aichi

8	Ibaraki		6	3		6		4	2		1		3		4	3	5	4	3	2		1	3	1	51	Ibaraki	
25	Shiga	4	2	1		3		4	4	3	3	3		1	3		3		1		4		2	1	42	Shiga	
38	Ehime	6	8	5		3			1	2	1	2	1	1	4	1				1	2	1		1	40	Ehime	
32	Shimane	3	6	6		1			1	3	3	2				1		1	1		1		2	1	32	Shimane	
41	Saga	1	4	1		2			1	3	2	1	1			2	1		3	1	1	2	1	1	28	Saga	
27	Osaka	8	8	2		8			3	4	13	5	4	8	2	2	5	3	4	3	3	1	4		90	Osaka	
15	Niigata	6	5	5		5		3	4	4	6	7	7	4	4	1	1	5	1		2	2	4		76	Niigata	
2	Aomori	3	3	6		2		4	3	5	1	3	2	8	4	4	2	2		4	1	6	4		67	Aomori	
45	Miyazaki	2	5	7		2		3	1	1	5	2	4	3	2	2	1		2	4		2			48	Miyazaki	
42	Nagasaki	3	5	2		5		2	2	3	3	2	1	1		1	1	2	2	1	4	4	3		47	Nagasaki	
39	Kochi	3	3	3		1		6	5	5	2	1	1	1	1	1	1	3		1			1		39	Kochi	
47	Okinawa	2	1	1		3		4	1	1	2	2	3	2	2		1	4	2	5		2			38	Okinawa	
31	Tottori	7	2	2		3		5	1	1	2	1			1	1	1	1	1	4		1			34	Tottori	
19	Yamanashi	1	2	5		1			3			1	1	1	1	1	2	4	1	2	1				27	Yamanashi	
37	Kagawa	2	4	1				2	4	2	1					3	1	1		2				1		24	Kagawa
	total	264	290	255		216		172	171	189	176	144	152	150	120	151	134	139	128	147	133	116	130	119	3,496	total	

Data source : <https://anzeninfo.mhlw.go.jp/user/anzen/tok/anst00.htm>

Return to https://www.jisha.or.jp/english/statistics/202211_23.html