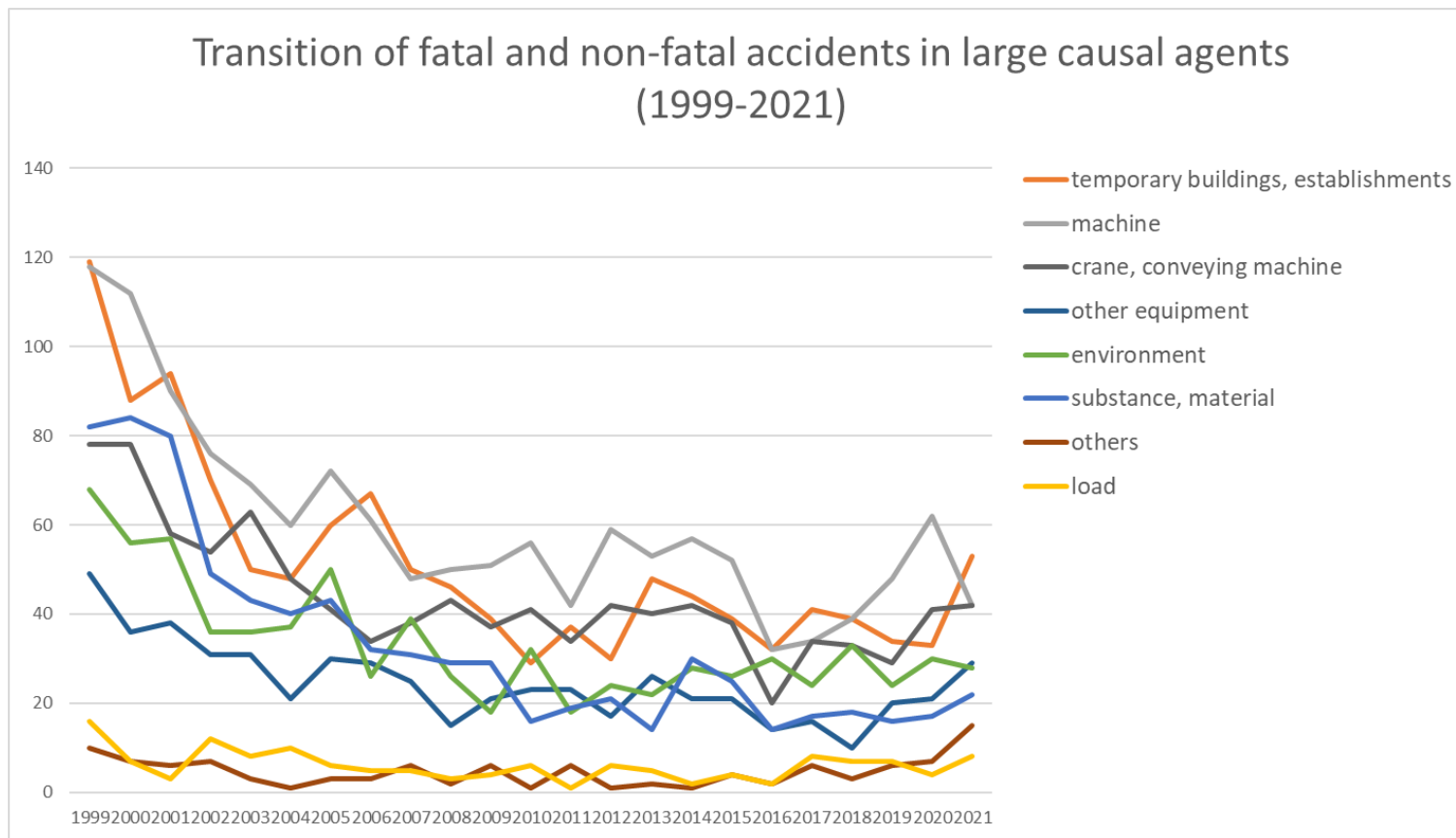
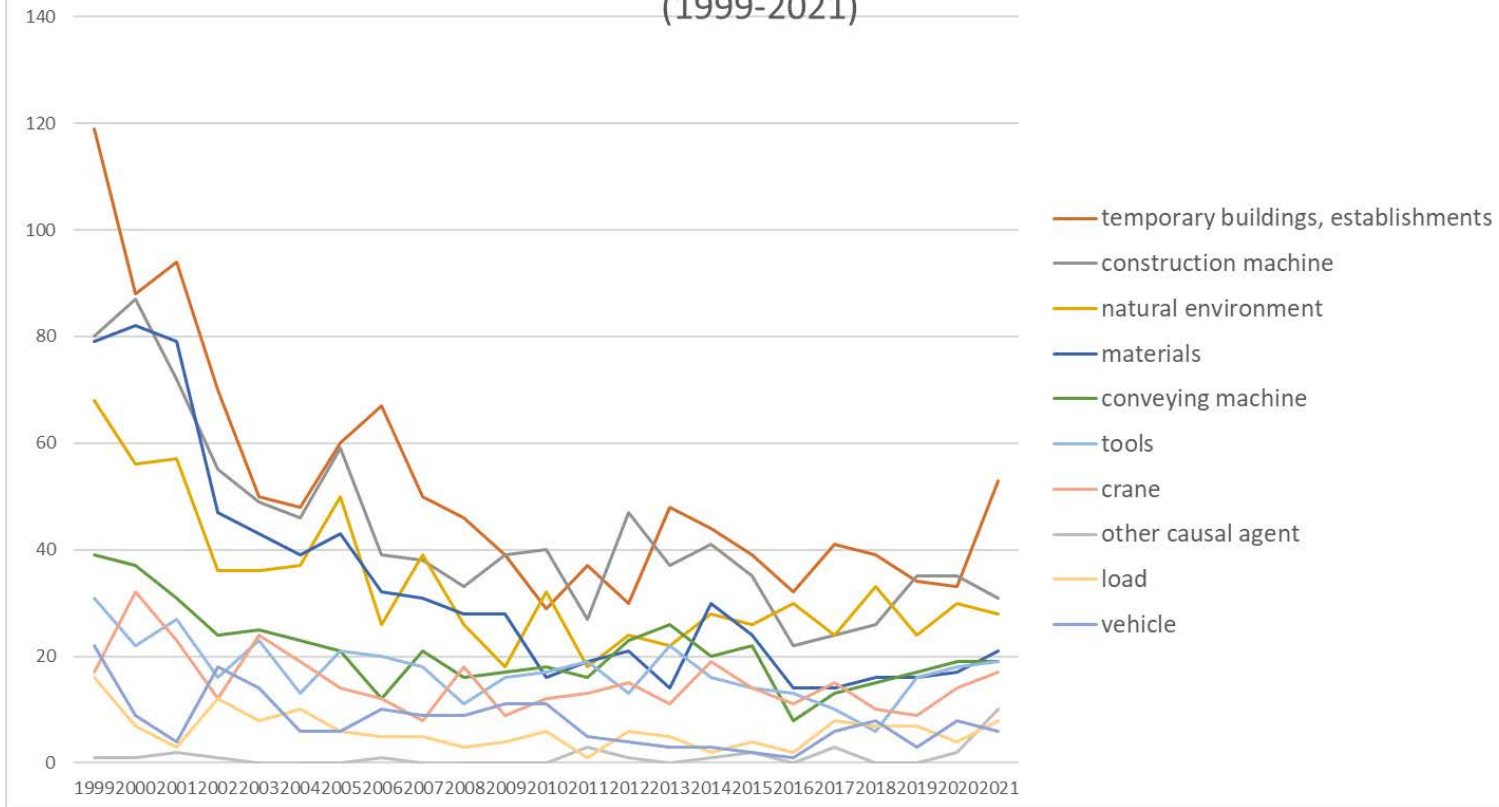


Transition of fatal and non-fatal accidents in each element like as causal agents, type of accidents, etc. in code no. 030107 river civil engineering work (1999-2021)



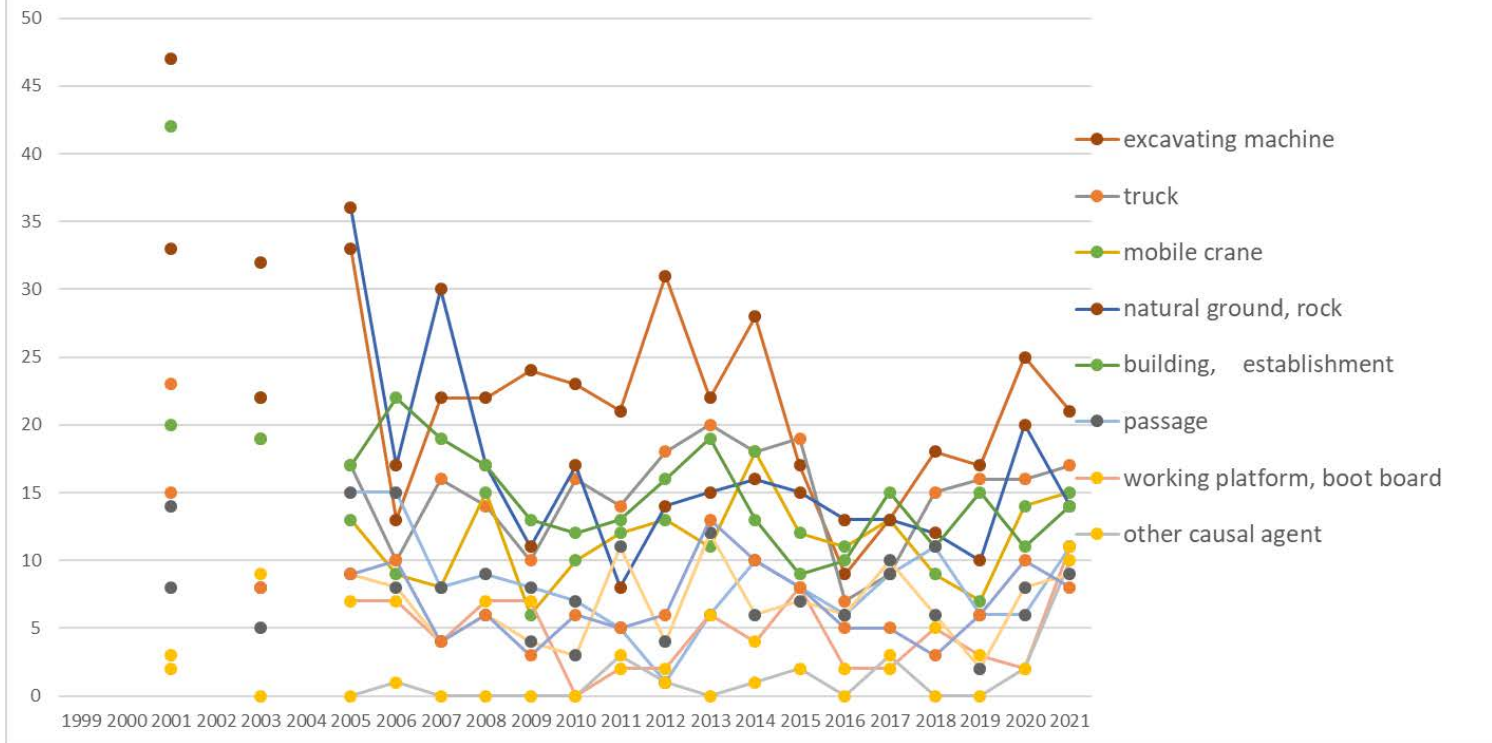
Transition of fatal and non-fatal accidents in large causal agents in code no. 030107 river civil engineering work (1999-2021)

Transition of fatal and non-fatal accidents in top 10 middle causal agents
(1999-2021)



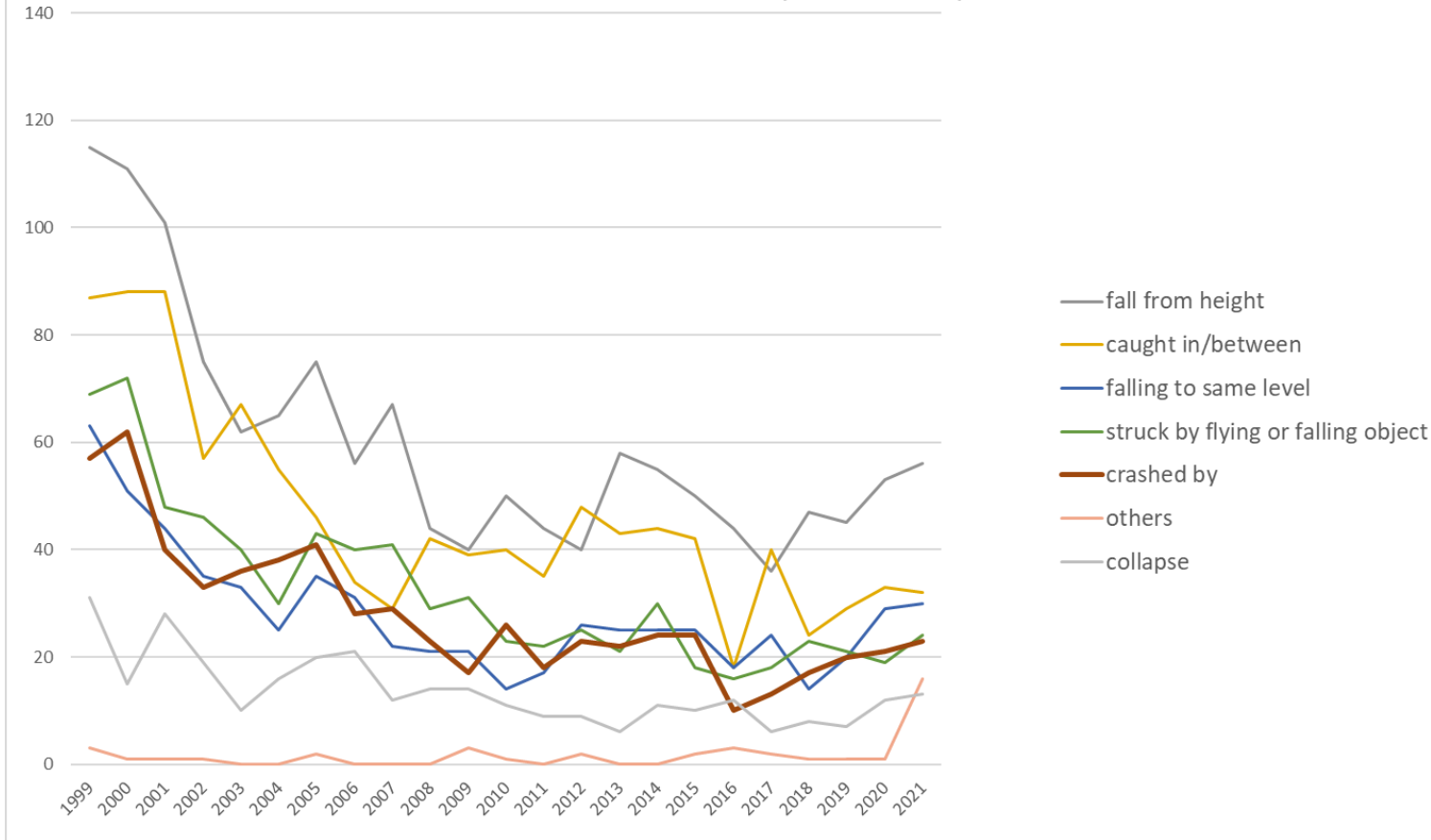
Transition of fatal and non-fatal accidents in middle causal agents in code no. 030107 river civil engineering work (1999-2021)

Transition of fatal and non-fatal accidents in top 10 small causal agents (1999-2021)



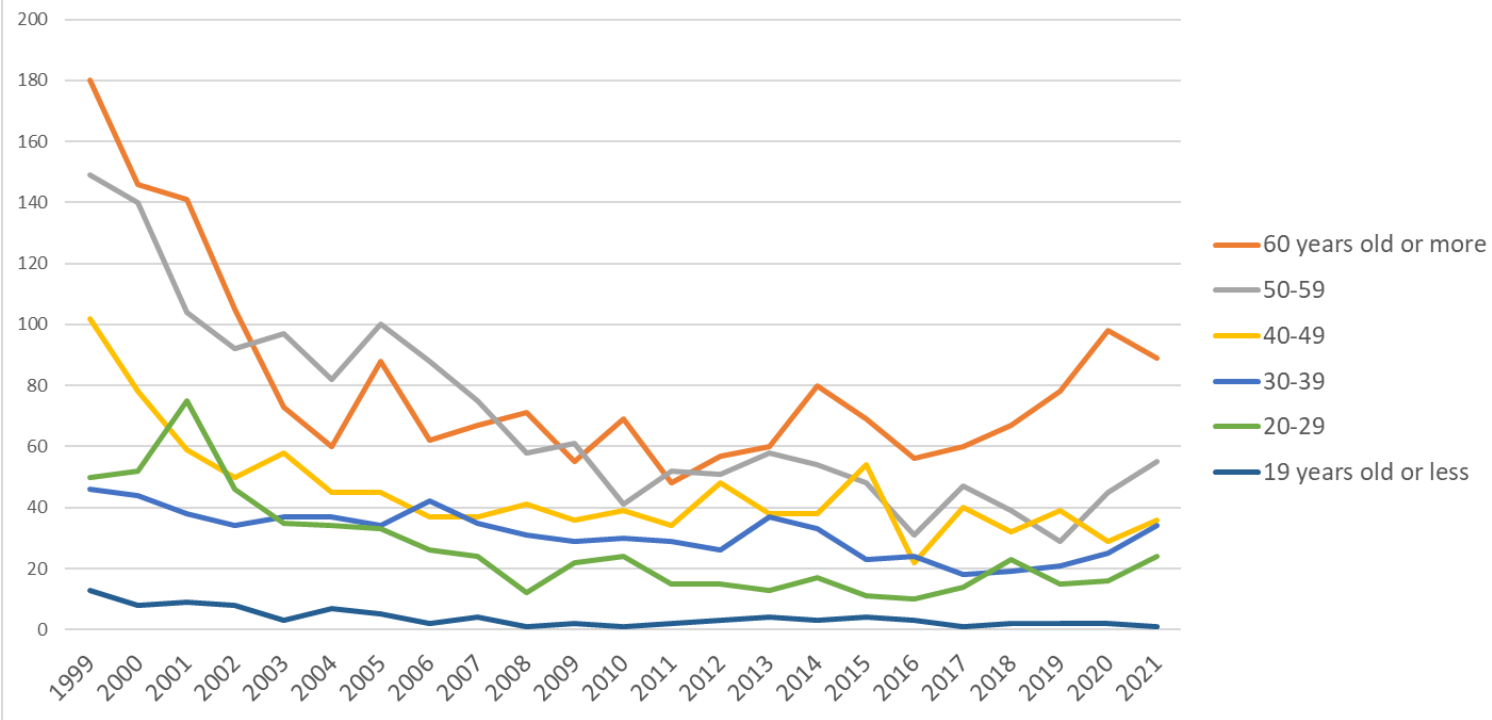
Transition of fatal and non-fatal accidents in small causal agents in code no. 030107 river civil engineering work (1999-2021)

Transition of fatal and non-fatal accidents in top 7 type of accidents
(1999-2021)



Transition of fatal and non-fatal accidents in type of accidents in code no. 030107 river civil engineering work (1999-2021)

Transition of fatal and non-fatal accidents in workers ages (1999-2021)



Transition of fatal and non-fatal accidents in workers ages in code no. 030107 river civil engineering work (1999-2021)

35	Yamaguchi	4	11	13		6		6	7	5	2	2	6	6	3	6	5	4	2	5		8	4	8	113	Yamaguchi
6	Yamagata	6	6	6		6		5	2	3	3	1	1	1	2	4	2	4	4	2	7	3	6	8	82	Yamagata
3	Iwate	6	15	6		13		8	2	3	2	3	6	4	5	3	9	4	4	10	13	9	7	7	139	Iwate
43	Kumamoto	11	5	17		3		2	3	9	5	3	7	7	6	1	6	5	5	6	4	3	8	7	123	Kumamoto
39	Kochi	23	18	12		11		13	5	10	4	2	2	4		8	8	6	9	5	2	7	7	6	162	Kochi
14	Kanagawa	9	8	11		3		5	8	3	4	5	5	2	8		3	5	4	2	4	1	2	6	98	Kanagawa
28	Hyogo	19	21	10		6		19	11	14	8	5	13	5	9	6	3	3	2	5	1	11	2	5	178	Hyogo
21	Gifu	11	23	22		8		9	6	9	6	6	9	5	7	5	5	9	1		4	3	4	5	157	Gifu
33	Okayama	23	23	8		7		10	4	7	1	2	4	2	5	6	7	2			5	3	7	4	130	Okayama
44	Oita	19	4	8		3		9	5	2	7	2	1	1	1	20	8	4	4	2	4	4	3	4	115	Oita
16	Toyama	7	11	7		4		8	5	5	8	9	6	1	2	6	7	3	3		2	2	3	4	103	Toyama
41	Saga	5	5	5		4		6	5	6	4	3	6	4	3	10	6	7	2	5	4	4	5	4	103	Saga
36	Tokushima	10	7	6		5		17	3	6	5	5	5			2	3	5	2	4	1		2	4	92	Tokushima
10	Gunma	16	4	9		7		2	2	1	5	3	3	3		3	2	4	1	2	4	4	3	4	82	Gunma
9	Tochigi	9	10	7		4		2		2	1	2	4	2	6	2	1			1	3		5	4	65	Tochigi
45	Miyazaki	6	3	2		1		4	3	4	5		2	4	2		1	3	4	5	3	2	4	4	62	Miyazaki
32	Shimane	4	7	8		6		2	2	4	3	1	6	1	1	1	2	4	2		1	2		4	61	Shimane
15	Niigata	24	15	12		9		22	14	6	8	8	4	6	11	4	14	8	5	2	7	3	4	3	189	Niigata
11	Saitama	8	6	8		4		6	6	2	6	12	8	9	1	5	11	8	2	7	2	2	5	3	121	Saitama
26	Kyoto	17	6	9		3		8	10	6	3	2	5	1	3	1	6	8	4	3	5	6	3	3	112	Kyoto
24	Mie	11	9	10		9		5	5	7		4	5	1	3	7	5	6	1	4	6	5	3	3	109	Mie
8	Ibaraki	8	5	3		6		5	1	3	1	2		5	5		3	6	3	2	4		1	3	66	Ibaraki
5	Akita	10		13		3		5	6	1	4	6	9	2	7	7	3	9		3	5	5	5	2	105	Akita

2	Aomori	8	5	11		2		2	5	1	3	3		8	8		2	2	4	3	2	2	1	2	74	Aomori
27	Osaka	4	5	10		7		4	3	11	6	3		1	1	2	2	3	1	1	4	2	2	2	74	Osaka
42	Nagasaki	8	13	5				4	2		2	3	2	2	3	1	6		1	1	1			2	56	Nagasaki
25	Shiga	5	3	6		8			5	3	1	2		2		1	2	1	2	1		1	2	2	47	Shiga
38	Ehime	18	10	19		6		11	6	4	3	3	1	3	4		5	1		3	1	5	4	1	108	Ehime
30	Wakayama	13	7	9		6		4	3	5	1	6	3	1	10	7	6	9	4	2		3		1	100	Wakayama
12	Chiba	5	8	8		7		3	9	6	5	4	4	1	3	4	4	3		4	4	2	2	1	87	Chiba
29	Nara	6	5	3		3		1	3	2	1	1	4	3	1	7	3		1	2	4	3	2	1	56	Nara
19	Yamanashi	5	8	8		2		2	1	2	3		3	3	2	4	3	1		1		2	1	1	52	Yamanashi
37	Kagawa	2	3			1		5	1		1	4	1	2	4	4	2	3	6	2	4	4	1	1	51	Kagawa
17	Ishikawa	2	2	2		7		3	1	1	5	3	2	3		2	1	5	3	1	2	1	1	1	48	Ishikawa
47	Okinawa	1	1			1					2				1			1		1				1	9	Okinawa
18	Fukui	6	12	10		7		3	6	3		5	2	8	4	3	1	5	1	2	2	4			84	Fukui
31	Tottori	7	2	3		5		1	3	3		1	2	2	4	2	3	1	2	4		1	3		49	Tottori
	total	540	468	426		303		305	257	242	214	205	204	180	200	210	225	209	146	180	182	184	215	239	5,334	total

Data source : <https://anzeninfo.mhlw.go.jp/user/anzen/tok/anst00.htm>

Return to https://www.jisha.or.jp/english/statistics/202211_23.html