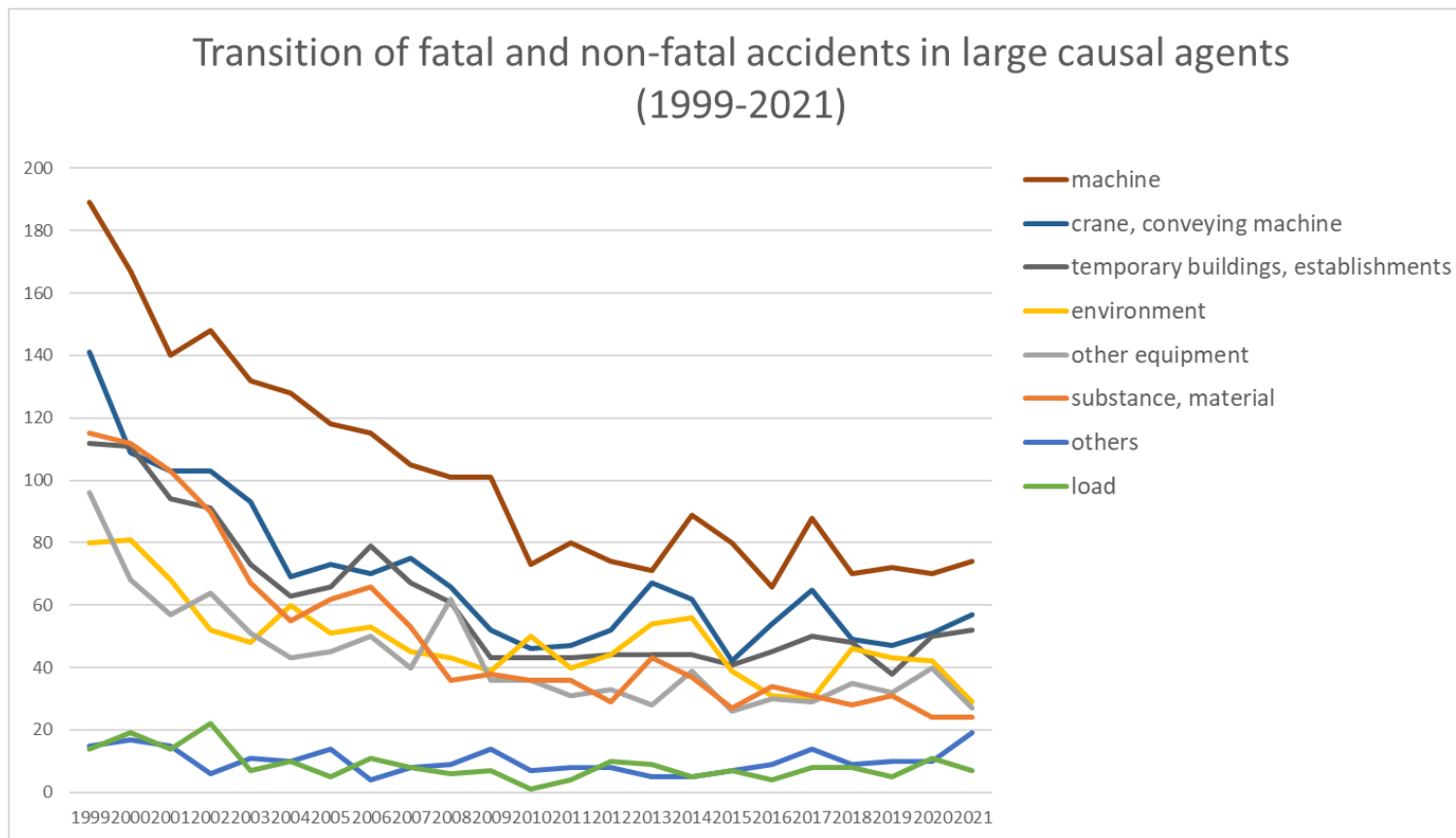
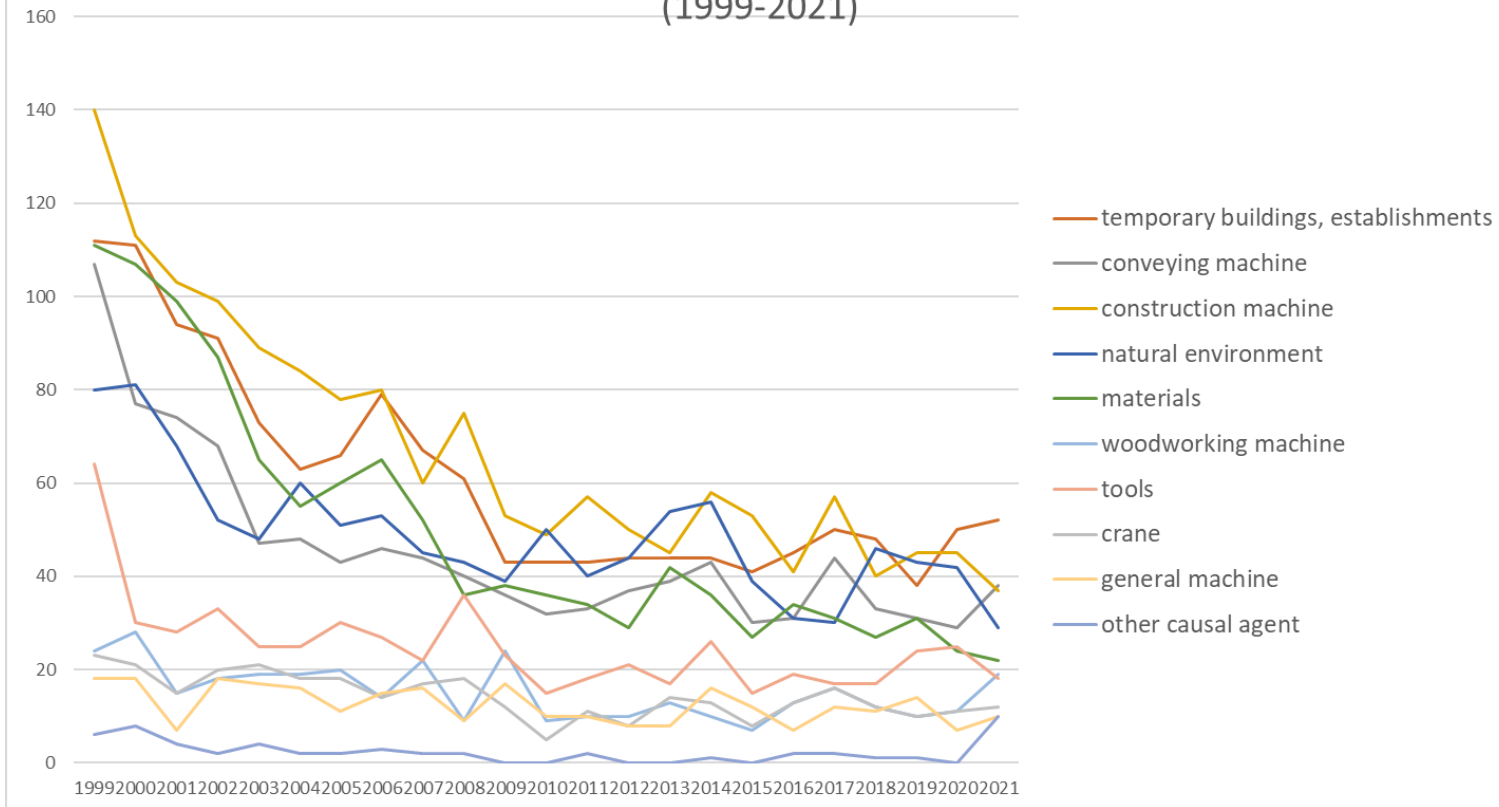


Transition of fatal and non-fatal accidents in each element like as causal agents, type of accidents, etc. in code no. 030109 land consolidation civil engineering work (1999-2021)



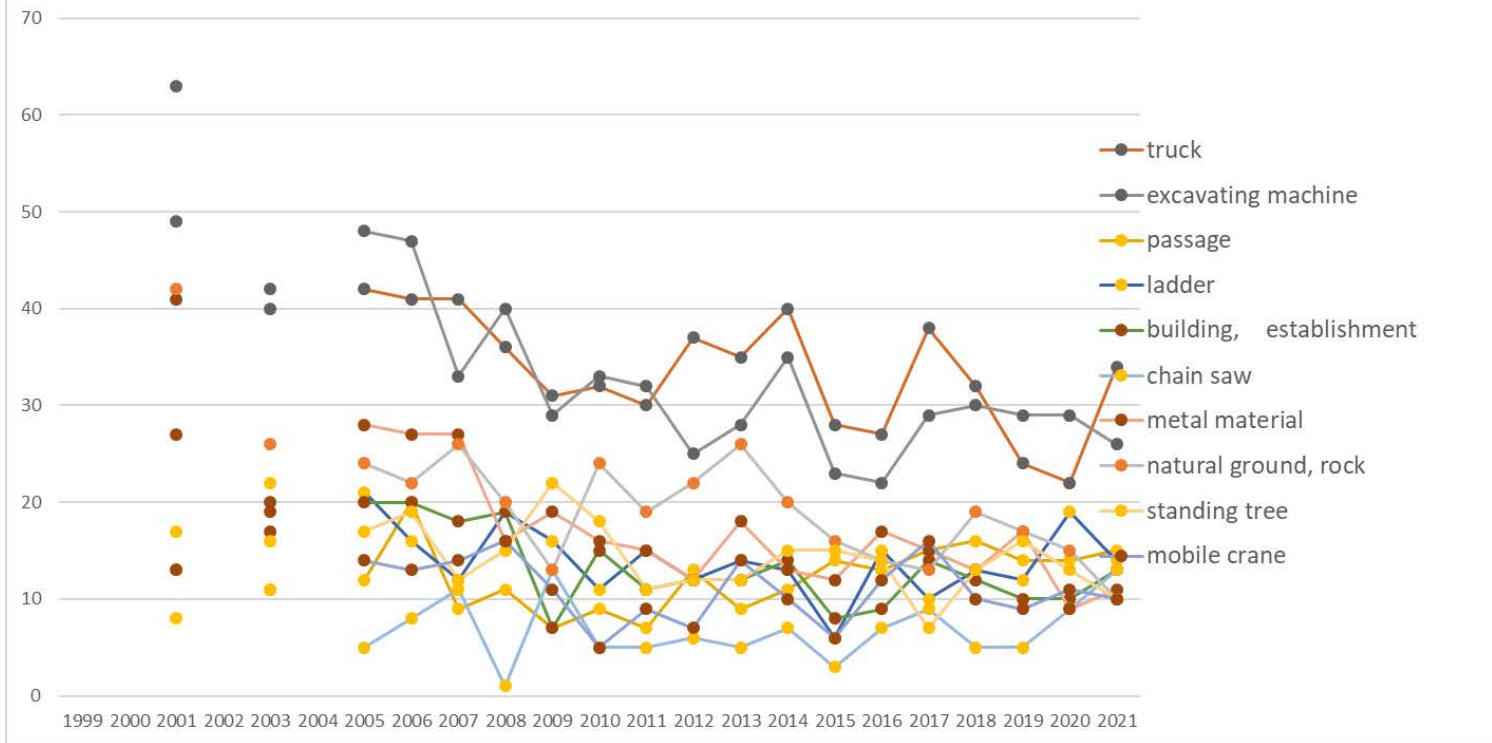
Transition of fatal and non-fatal accidents in large causal agents in code no. 030109 land consolidation civil engineering work (1999-2021)

Transition of fatal and non-fatal accidents in top 10 middle causal agents (1999-2021)



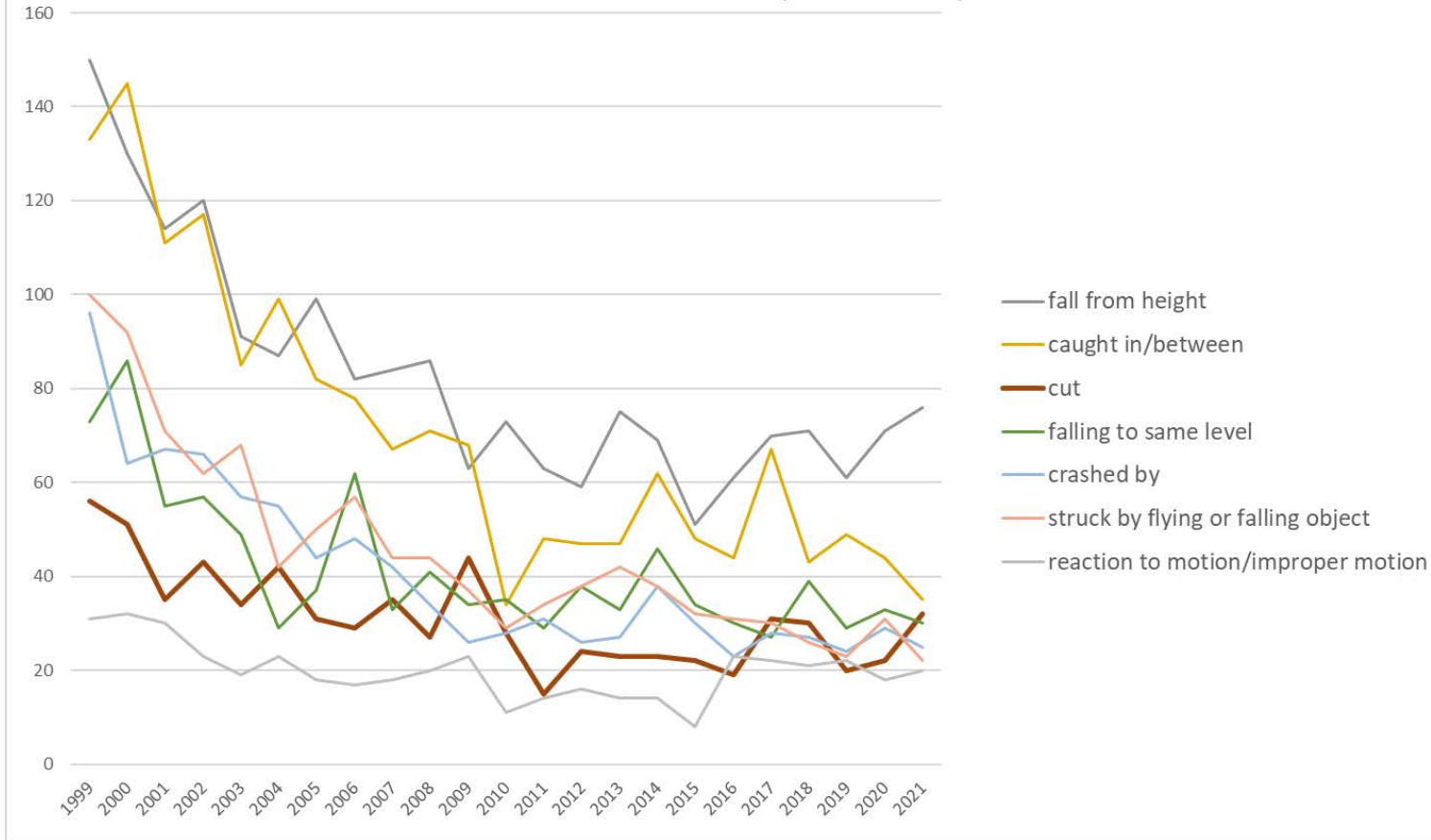
Transition of fatal and non-fatal accidents in middle causal agents in code no. 030109 land consolidation civil engineering work (1999-2021)

Transition of fatal and non-fatal accidents in top 10 small causal agents (1999-2021)



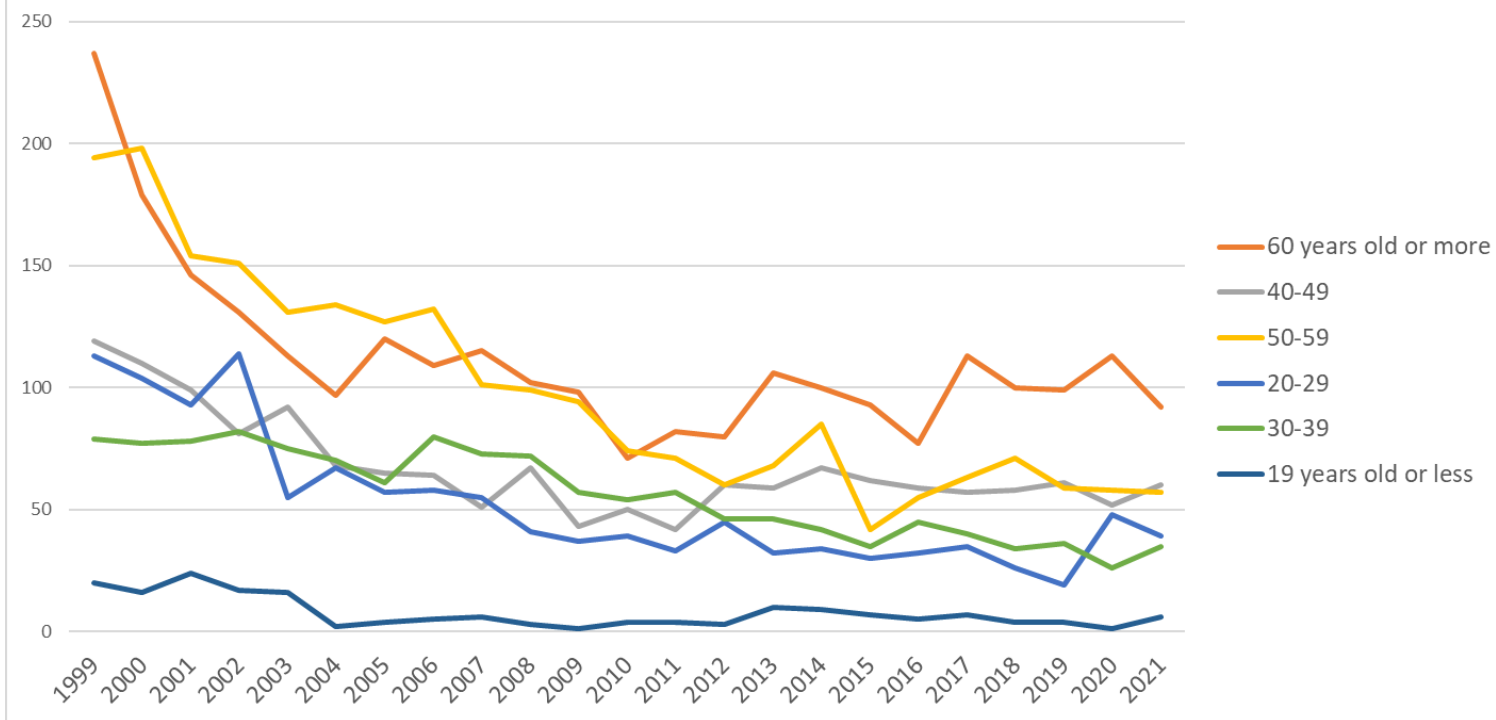
Transition of fatal and non-fatal accidents in small causal agents in code no. 030109 land consolidation civil engineering work (1999-2021)

Transition of fatal and non-fatal accidents in top 7 type of accidents
(1999-2021)



Transition of fatal and non-fatal accidents in type of accidents in code no. 030109 land consolidation civil engineering work (1999-2021)

Transition of fatal and non-fatal accidents in workers ages (1999-2021)



Transition of fatal and non-fatal accidents in workers ages in code no. 030109 land consolidation civil engineering work (1999-2021)

13	Tokyo	17	15	21		16		15	15	20	12	17	14	11	9	16	10	10	9	23	8	10	11	11	290	Tokyo
24	Mie	22	8	11		10		10	11	12	13	12	5	7	6	8	7	8	8	8	9	6	4	11	196	Mie
7	Fukushima	19	13	9		12		8	6	16	10	6	10	5	14	12	8	4	4	6	5	7	5	11	190	Fukushima
11	Saitama	16	31	29		13		11	16	23	19	12	6	6	15	9	15	7	5	16	16	11	9	10	295	Saitama
29	Nara	32	16	10		17		6	12	6	14	8	4	8	9	3	5	2	7	5	5	2	1	8	180	Nara
12	Chiba	18	19	18		21		11	24	15	25	18	14	12	18	18	16	16	12	21	16	11	28	7	358	Chiba
15	Niigata	18	18	17		8		10	17	12	3	7	9	8	6	4	9	1	4	5	8	4	3	7	178	Niigata
41	Saga	6	10	4		6		3	4	1	2	3	4	6	2	7	4	6	5	7	5	4	6	7	102	Saga
8	Ibaraki	24	13	17		9		7	14	8	11	7	7	1	3	5	1	3	2	4	1	3	4	6	150	Ibaraki
35	Yamaguchi	7	12	9		10		7	9	5	13	3	1	3	5	6	7	4	6	4	6	7	8	6	138	Yamaguchi
43	Kumamoto	9	5	8		5		5	9	4	5	5	9	2	3	5	8		5	7	7	9	4	6	120	Kumamoto
20	Nagano	23	13	9		16		10	5	3	10	8	4	6	2	5	6	5		8	3	8	5	5	154	Nagano
45	Miyazaki	5	7	5		4		5	6	2	4	3	4	4	2		2		2	1	4	9	2	5	76	Miyazaki
17	Ishikawa	5	8	6		2		4	4	2	2		5	3	3		1	1	2	5	3	2	3	5	66	Ishikawa
28	Hyogo	33	36	27		30		32	21	11	16	8	11	11	9	11	17	8	9	15	15	9	6	4	339	Hyogo
46	Kagoshima	31	38	19		13		19	20	8	5	7	5	2	3	11	13	7	8	11	9	10	7	4	250	Kagoshima
34	Hiroshima	24	13	15		12		13	8	12	10	4	4	8	7	11	6	2	3	6	1		12	4	175	Hiroshima
33	Okayama	31	19	16		14		13	4	5	5	6	5	3	1	4	3	3	5	3	5	3	5	4	157	Okayama
39	Kochi	7	10	15		6		3	9	7	3	4	4	1	7	3	1	1	3	4	6	4	4	4	106	Kochi
6	Yamagata	6	11	4		2		2	1	6	4	4	2	1	6	2	2	1	5	4	7	4	5	4	83	Yamagata
37	Kagawa	4	6	2		6		5	2	2		3	5	3	6	2			6	5	2		4	4	67	Kagawa
44	Oita	15	16	10		13		16	9	7	7	1	6	5	4	10	7	9	9	8	6	2	2	3	165	Oita
38	Ehime	17	23	15		10		12	3	2		3	4	5	6	4	6	2	3	2	4	3	2	3	129	Ehime

26	Kyoto	18	10	6		3		7	9	10	8	6	4	5	3	3	3	2	1	4	2	1	1	3	109	Kyoto
47	Okinawa	7	1			4		4	3	5	5	2	4	7	1		5	2	3	5	2	4	2	3	69	Okinawa
3	Iwate	12	10	9		11		2	10	3	2	5	4	10	3	4	13	10	6	9	8	8	4	2	145	Iwate
42	Nagasaki	17	21	19		11		9	2	3	8	6	1	2	4	5	6	5	3	2	6	9	3	2	144	Nagasaki
9	Tochigi	12	9	11		5		2	4	3		5	4	4	7	8	5	1	5	6	1	3	4	2	101	Tochigi
16	Toyama	9	10	3		3		5	2	5	5	1	7	2		4	4	5	5	5	1	3	6	2	87	Toyama
2	Aomori	9	7	8		1		1	4	2	2	2	1	3	1	2	2	2	1	2	1	1	3	2	57	Aomori
30	Wakayama	26	7	12		9		10	13	11	9	5	7	6	3	9	7	4	8	2	4	3	2	1	158	Wakayama
32	Shimane	10	9	14		6		4	5	3	1	2		1	2	2	1	1	1		1	4	1	1	69	Shimane
25	Shiga	2	5	9		5		9	3	5	7	1			3	3		2				3	7	1	65	Shiga
36	Tokushima	2	7	3		4		4	4	1	6	2	1	2	1	3	3	4	3		1	1	8	1	61	Tokushima
19	Yamanashi	10	9	10		2		3		3	1		1	1	2	1	4	1	4	1	5			1	59	Yamanashi
21	Gifu	33	20	24		8		2	2	8	3	2	8	3	2	4	7	7	3	4	2	8	6		156	Gifu
18	Fukui	10	8	2		5		4	1	2	2	2	3	2	3	1	1	7			2	2	2		59	Fukui
31	Tottori	2	1	2		8		3	2	3	1	1	4	3	4	1	3								38	Tottori
	total	762	684	594		482		434	448	401	384	330	292	289	294	321	337	269	273	315	293	278	298	289	8,067	total

Data source : <https://anzeninfo.mhlw.go.jp/user/anzen/tok/anst00.htm>

Return to https://www.jisha.or.jp/english/statistics/202211_23.html