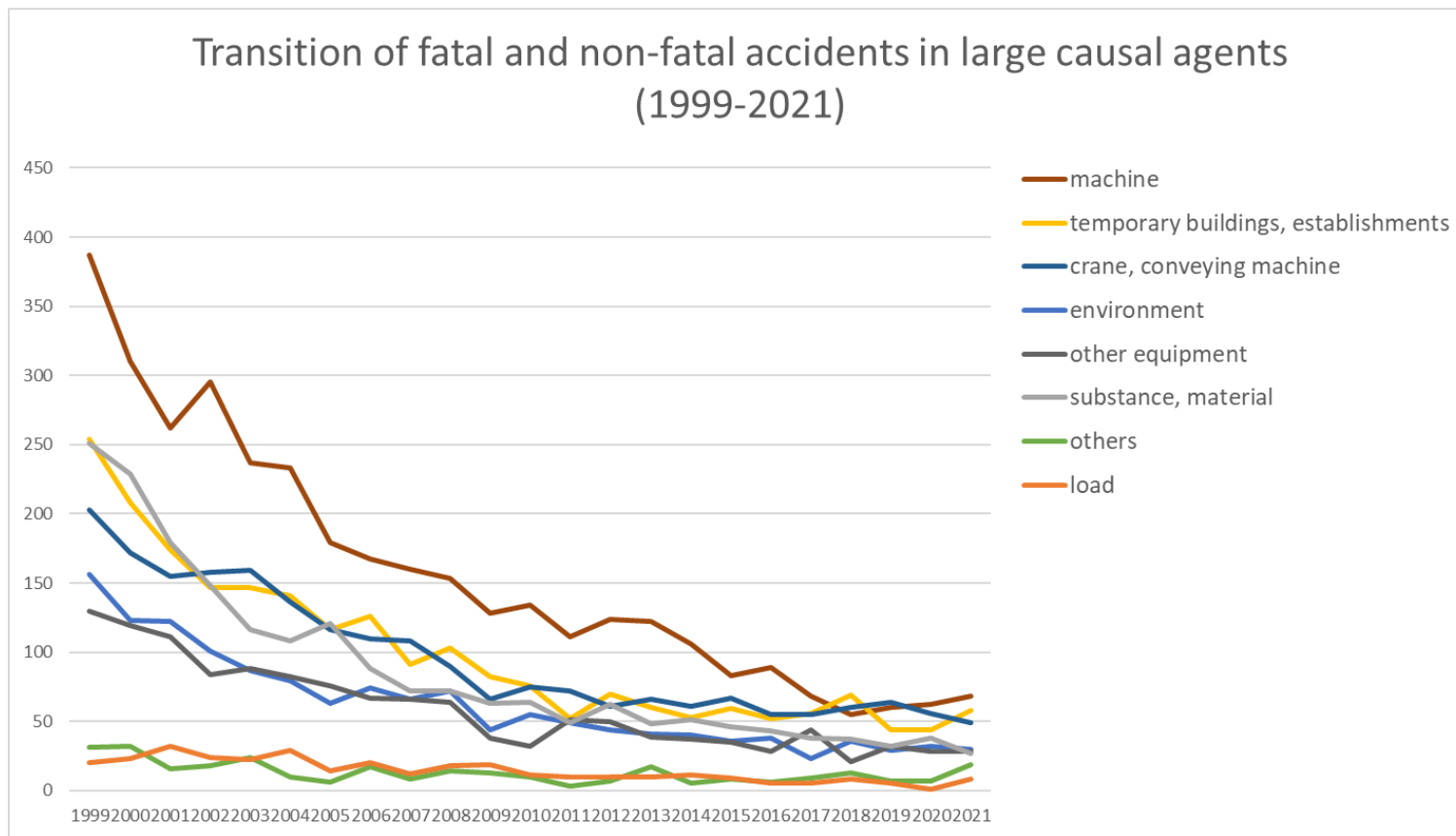
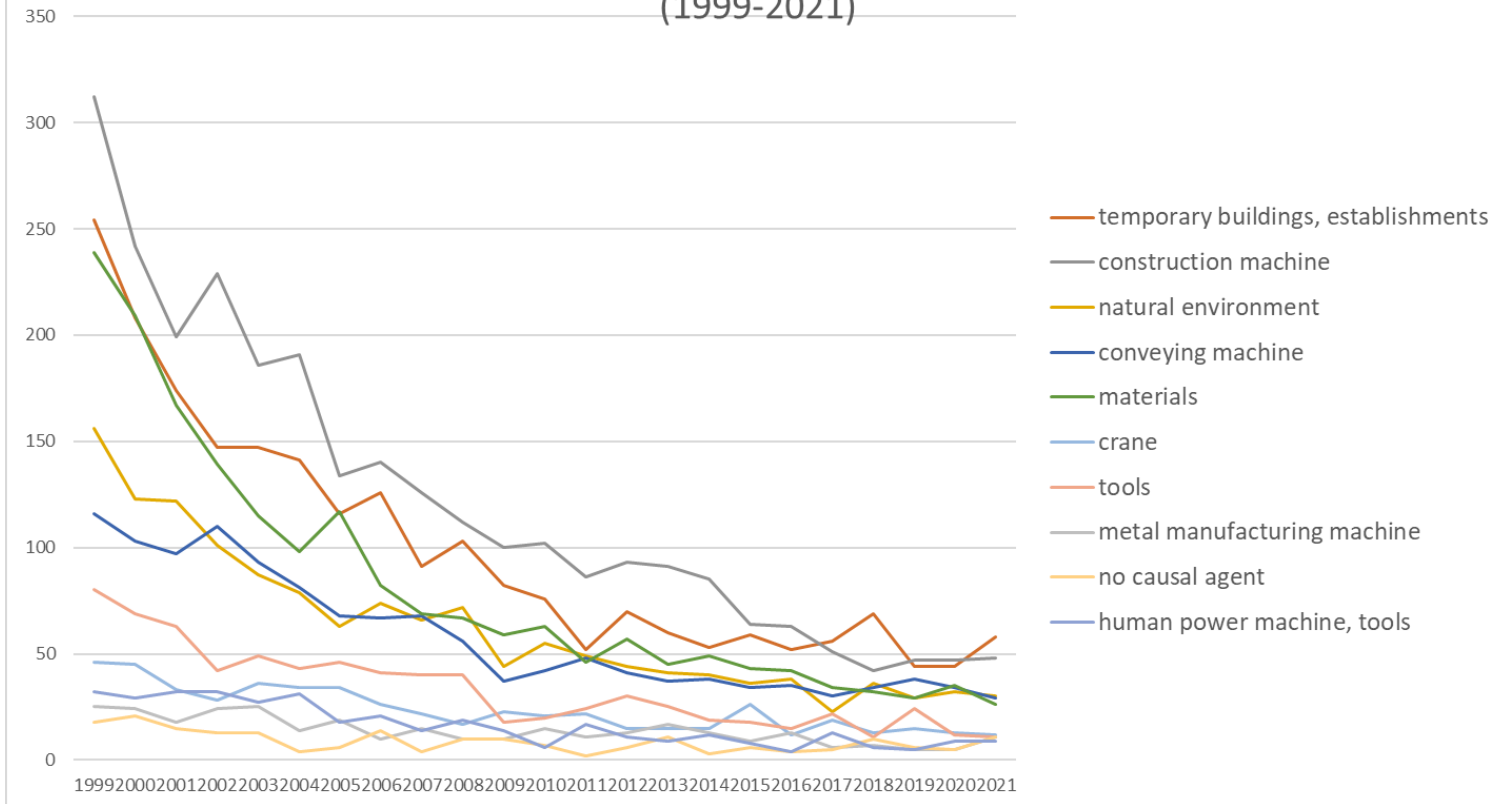


Transition of fatal and non-fatal accidents in each element like as causal agents, type of accidents, etc. in code no. 030110 water supply/sewage construction work (1999-2021)



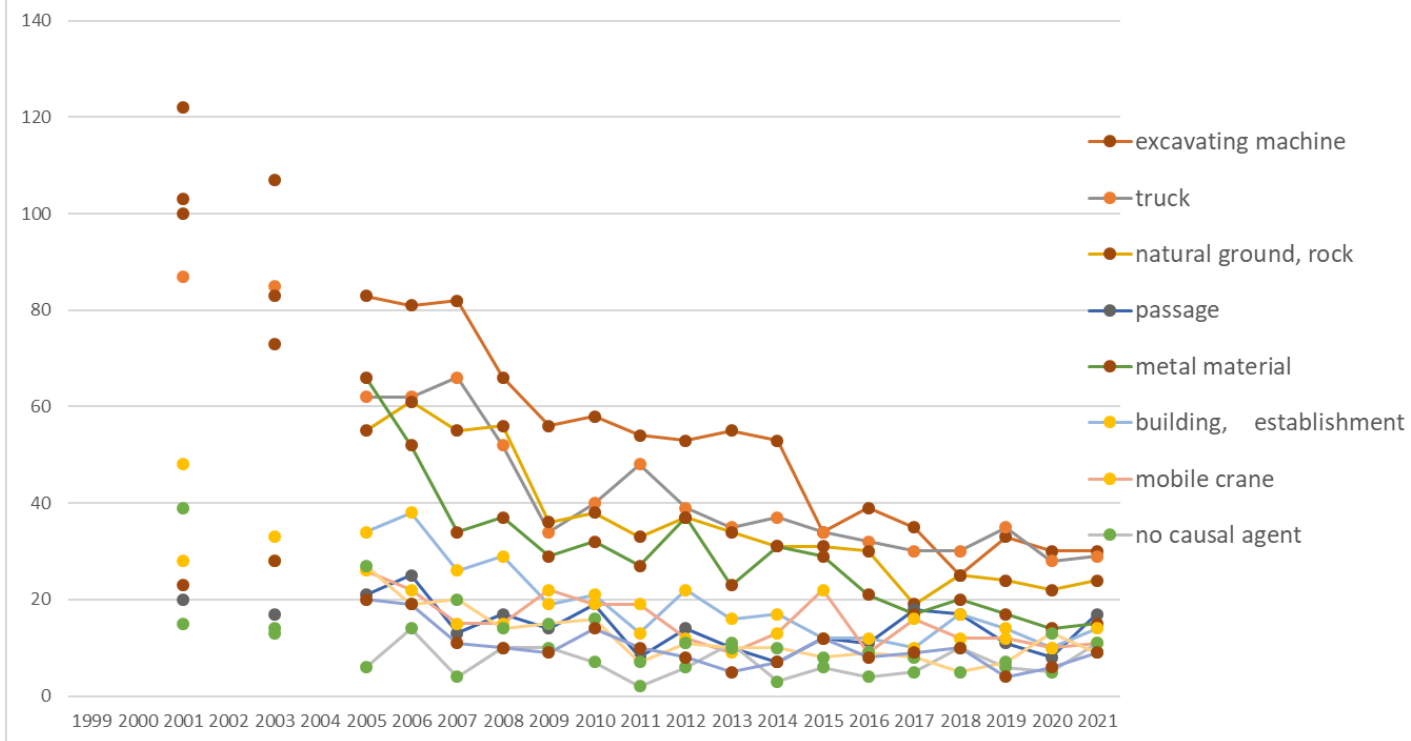
Transition of fatal and non-fatal accidents in large causal agents in code no. 030110 water supply/sewage construction work (1999-2021)

## Transition of fatal and non-fatal accidents in top 10 middle causal agents (1999-2021)



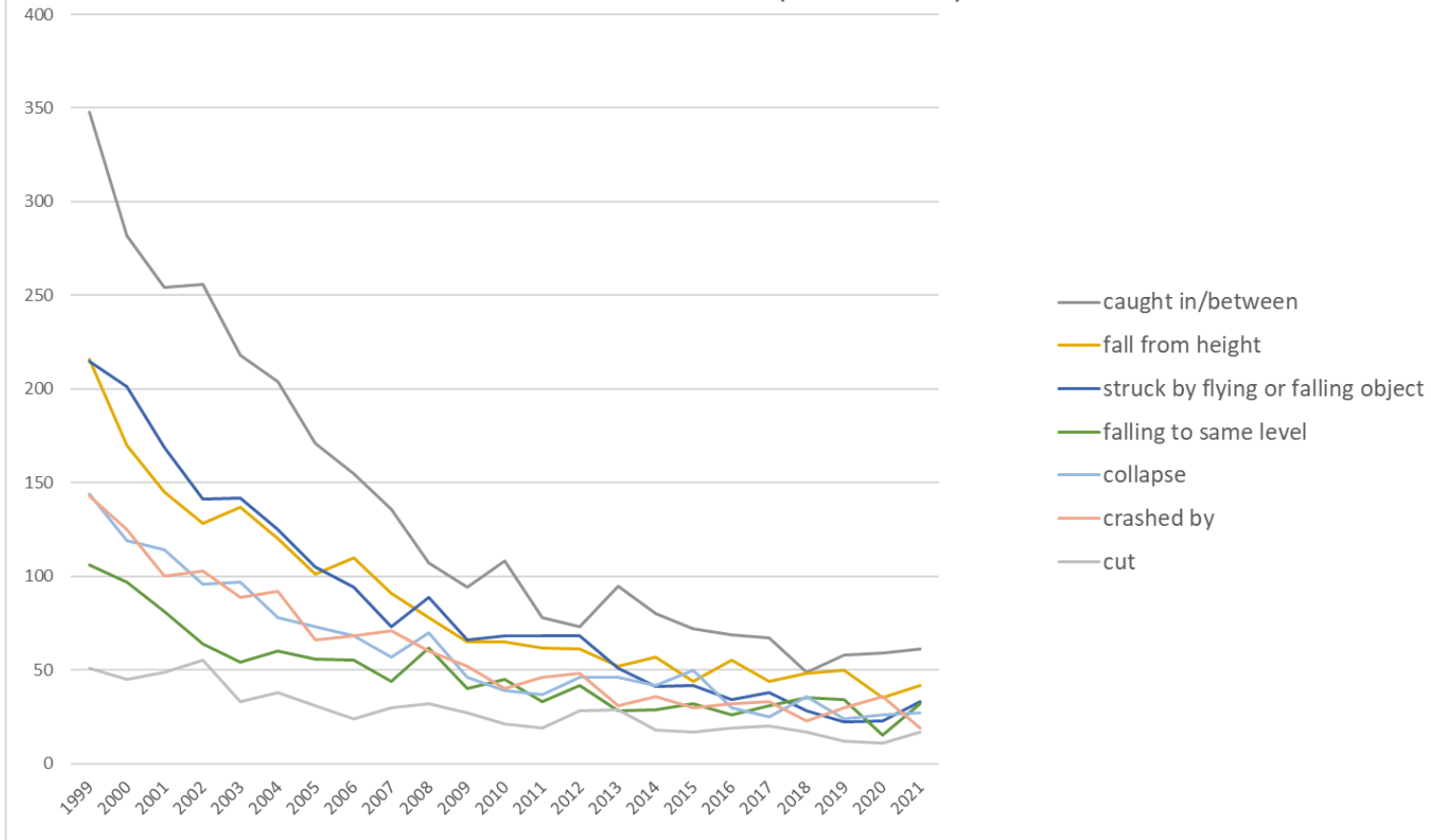
Transition of fatal and non-fatal accidents in middle causal agents in code no. 030110 water supply/sewage construction work (1999-2021)

## Transition of fatal and non-fatal accidents in top 10 small causal agents (1999-2021)



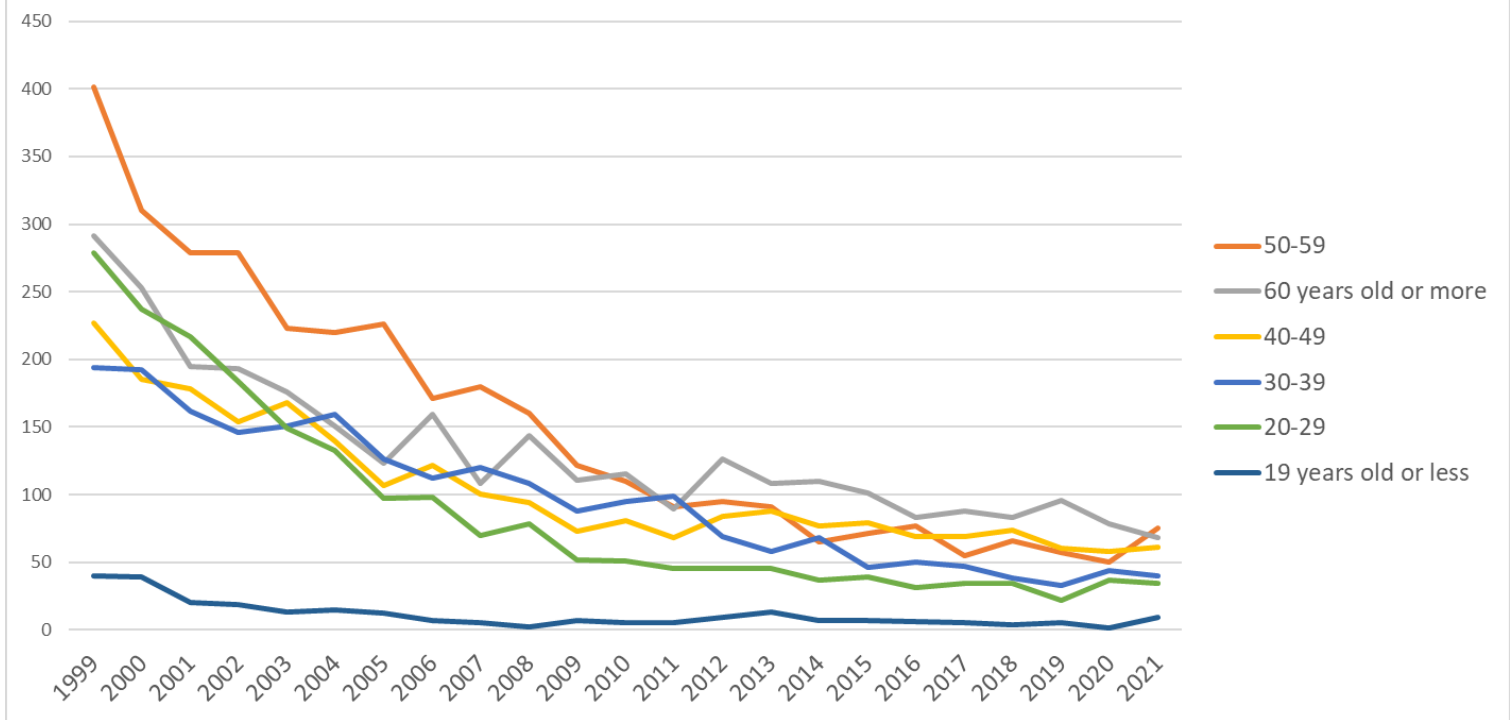
Transition of fatal and non-fatal accidents in small causal agents in code no. 030110 water supply/sewage construction work (1999-2021)

Transition of fatal and non-fatal accidents in top 7 type of accidents  
(1999-2021)



Transition of fatal and non-fatal accidents in type of accidents in code no. 030110 water supply/sewage construction work (1999-2021)

### Transition of fatal and non-fatal accidents in workers ages (1999-2021)



Transition of fatal and non-fatal accidents in workers ages in code no. 030110 water supply/sewage construction work (1999-2021)







































29	Nara	14	10	19		10		11	11	8	9	9	7	9	5	3	4	8	2	4	1	11	3	3	161	Nara
41	Saga	5	8	3		11		8	1	6	3	4	7	2	4	1	7	8	1	2	6		2	3	92	Saga
45	Miyazaki	13	12	7		4		4	6		2		2	2	5	1	3		3	2	1	4	3	3	77	Miyazaki
7	Fukushima	29	24	19		14		12	9	11	11	7	7	8	10	7	11	6	6	6	5	7	6	2	217	Fukushima
35	Yamaguchi	26	12	19		10		15	2	6	9	8	4	6	8	5	3	3	9	6	4	6	5	2	168	Yamaguchi
2	Aomori	16	16	20		8		8	10	2	13	8	9	7	8	7	3	3	5	4	5	4	1	2	159	Aomori
19	Yamanashi	11	10	16		5		3	10	5	7	2	4	3	2	1	2	5	2	2	2	2		2	96	Yamanashi
36	Tokushima	2	1	3		2		6	4	6	2	2	1			2	1	1		2		2		2	39	Tokushima
8	Ibaraki	39	24	34		25		15	17	20	19	18	11	12	20	18	10	13	7	13	6	8	6	1	336	Ibaraki
6	Yamagata	17	13	15		8		18	21	16	6	3	8	6	5	8	4	8	7	11	6	5	7	1	193	Yamagata
44	Oita	22	13	8		12		8	11	11	6	1	7	3	11	3	4	5	5	3	2	4	6	1	146	Oita
43	Kumamoto	19	16	15		18		7	6	5	4	4	6	6	10	7	4		4	4	4	2	3	1	145	Kumamoto
30	Wakayama	17	10	14		11		7	10	11	7	6	9	6	3	6	3	3	2	3	3	5	2	1	139	Wakayama
25	Shiga	17	17	14		10		6	5	3	6	3	1	5			1	1	3		1	1	1	1	96	Shiga
17	Ishikawa	7	10	7		10		5	3	6	3	9	7	3	5	2	2	4	2	2	2	1	2		92	Ishikawa
	total	1,432	1,216	1,051		880		691	669	583	586	453	457	397	428	403	364	343	316	298	299	273	268	287	11,694	total

Data source : <https://anzeninfo.mhlw.go.jp/user/anzen/tok/anst00.htm>

Return to [https://www.jisha.or.jp/english/statistics/202211\\_23.html](https://www.jisha.or.jp/english/statistics/202211_23.html)