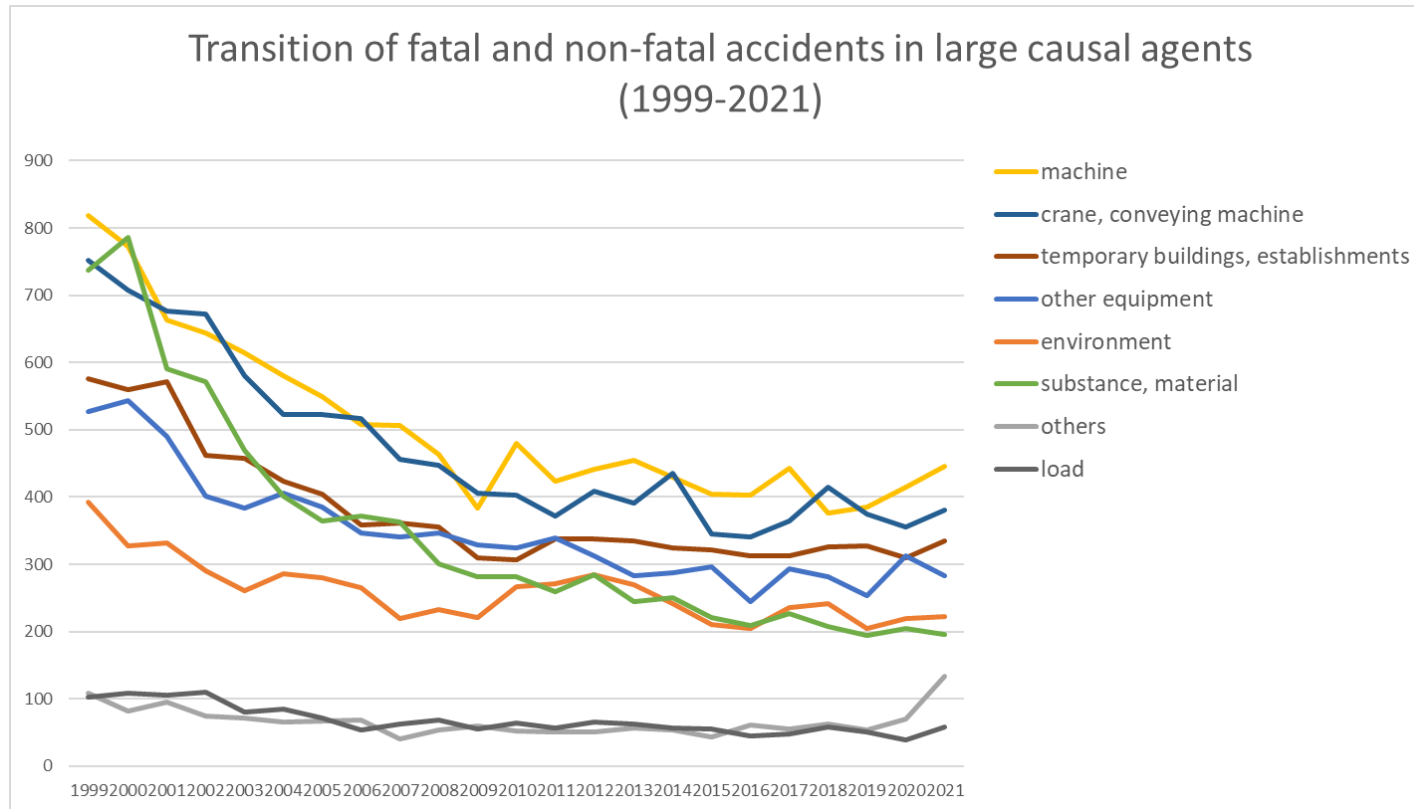
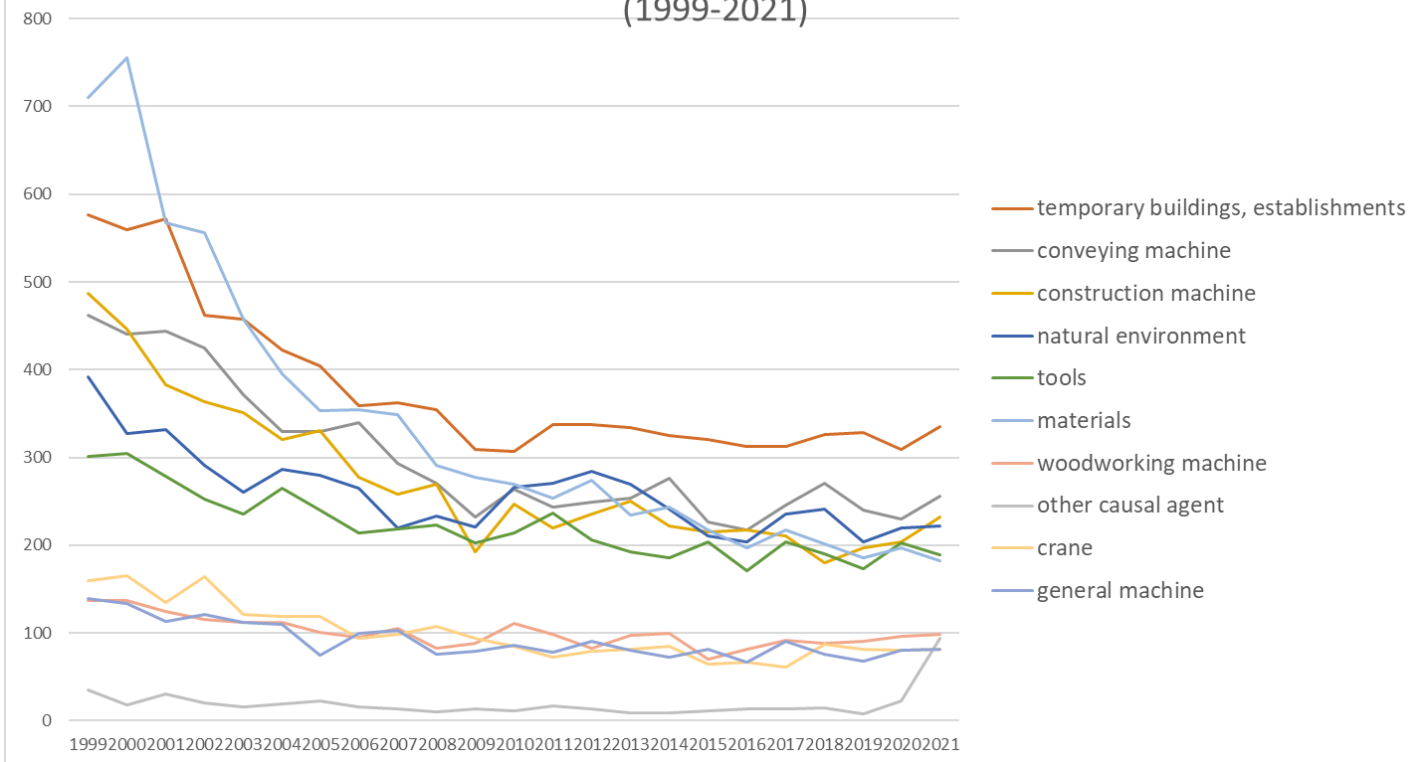


Transition of fatal and non-fatal accidents in each element like as causal agents, type of accidents, etc. in code no. 030199 other civil engineering work (1999-2021)



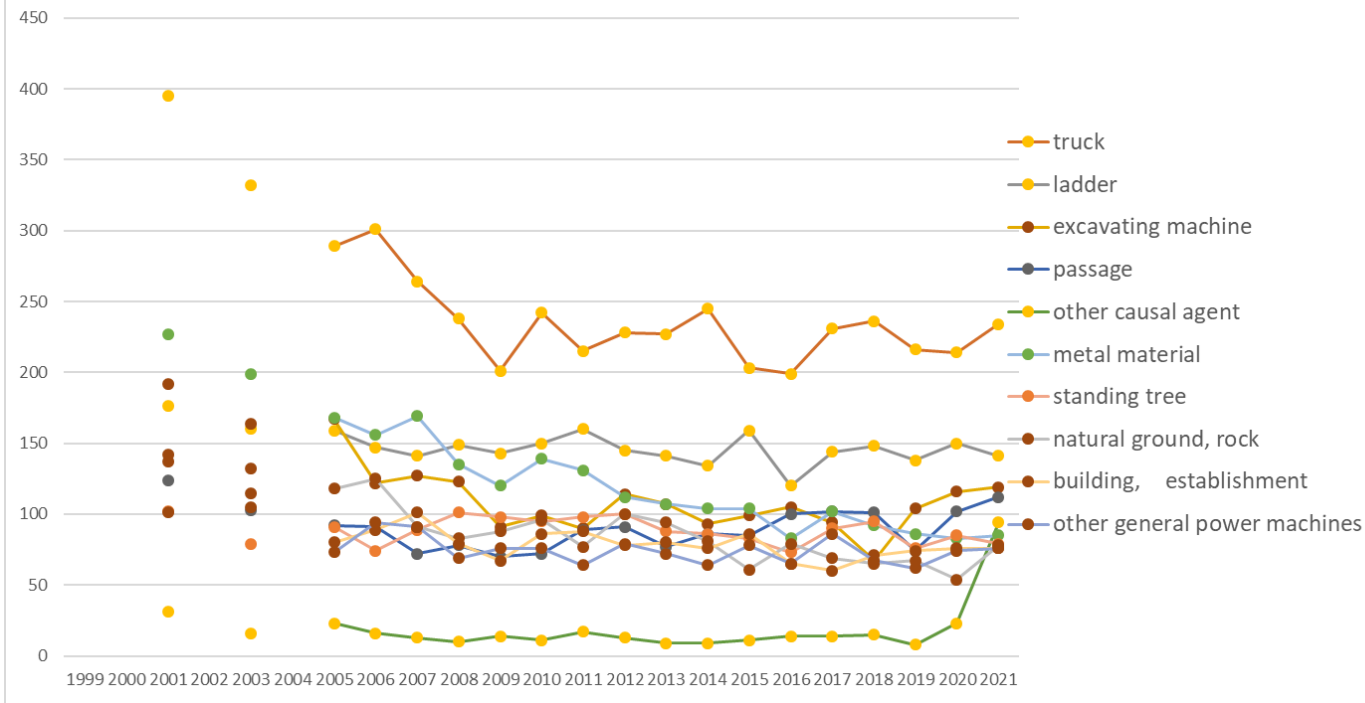
Transition of fatal and non-fatal accidents in large causal agents in code no. 030199 other civil engineering work (1999-2021)

Transition of fatal and non-fatal accidents in top 10 middle causal agents
(1999-2021)



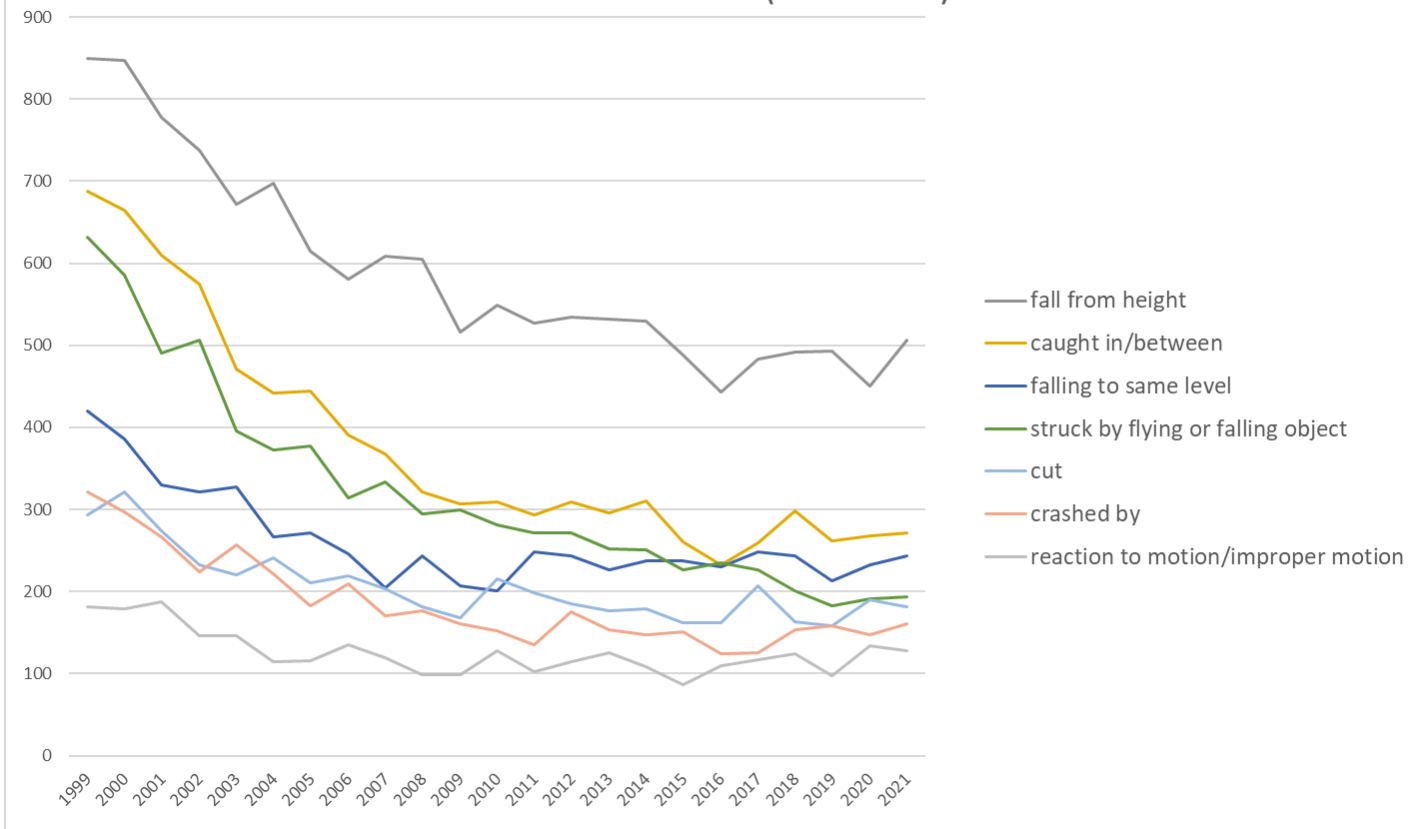
Transition of fatal and non-fatal accidents in middle causal agents in code no. 030199 other civil engineering work (1999-2021)

Transition of fatal and non-fatal accidents in top 10 small causal agents (1999-2021)



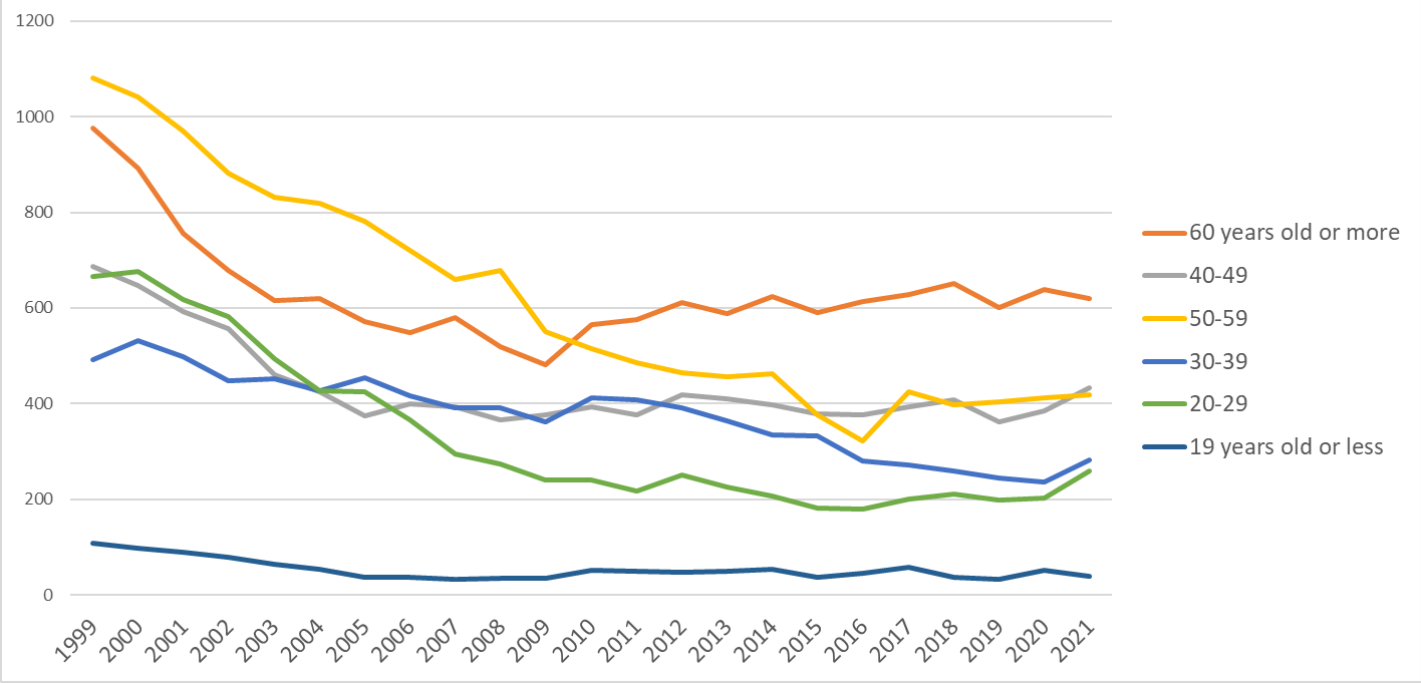
Transition of fatal and non-fatal accidents in small causal agents in code no. 030199 other civil engineering work (1999-2021)

Transition of fatal and non-fatal accidents in top 7 type of accidents
(1999-2021)



Transition of fatal and non-fatal accidents in type of accidents in code no. 030199 other civil engineering work (1999-2021)

Transition of fatal and non-fatal accidents in workers ages (1999-2021)



Transition of fatal and non-fatal accidents in workers ages in code no. 030199 other civil engineering work (1999-2021)

21	Gifu	64	85	62		62		52	42	30	43	44	26	23	41	38	35	32	30	33	34	33	34	30	873	Gifu
9	Tochigi	51	54	46		26		26	39	36	43	26	19	27	28	22	19	39	26	21	27	34	27	30	666	Tochigi
24	Mie	115	87	110		79		51	47	42	41	37	65	40	29	34	36	27	31	32	26	34	48	28	1,039	Mie
44	Oita	90	84	101		61		49	38	49	46	46	38	30	32	34	40	30	47	40	40	44	29	28	996	Oita
45	Miyazaki	73	64	62		47		47	60	53	54	40	47	41	39	45	31	27	31	26	32	29	37	28	913	Miyazaki
5	Akita	75	59	83		44		41	34	30	28	40	19	27	38	38	31	31	31	22	32	23	28	28	782	Akita
35	Yamaguchi	41	35	47		43		18	38	36	29	24	29	32	20	25	24	25	21	34	17	10	18	27	593	Yamaguchi
37	Kagawa	41	40	24		30		38	29	24	25	23	25	19	16	20	11	14	15	16	20	22	17	24	493	Kagawa
26	Kyoto	50	72	67		38		57	48	42	32	41	29	33	49	32	33	34	25	36	24	25	41	22	830	Kyoto
29	Nara	39	29	57		30		21	20	20	16	30	25	18	24	17	19	12	14	17	11	16	24	22	481	Nara
39	Kochi	59	58	61		53		37	22	19	31	15	27	42	35	31	30	35	21	30	34	25	27	18	710	Kochi
25	Shiga	44	39	20		23		11	28	13	28	21	21	11	21	18	18	16	14	16	16	20	12	18	428	Shiga
47	Okinawa	16	21	18		13		13	8	23	12	8	18	26	21	14	14	10	18	21	21	23	14	16	348	Okinawa
17	Ishikawa	25	21	13		15		11	15	10	16	19	15	11	12	10	20	10	9	13	4	10	13	16	288	Ishikawa
16	Toyama	52	61	35		38		42	41	26	22	26	26	27	41	19	22	21	23	28	27	26	28	15	646	Toyama
30	Wakayama	46	49	37		20		24	24	25	15	23	17	26	26	21	10	15	11	17	14	15	11	15	461	Wakayama
41	Saga	44	39	32		18		21	18	21	24	28	21	18	21	29	26	15	14	25	20	30	35	14	513	Saga
32	Shimane	34	42	38		26		18	30	23	30	14	11	22	21	19	13	16	19	11	18	16	9	11	441	Shimane
19	Yamanashi	48	31	27		46		20	33	18	25	20	21	9	14	18	13	14	13	25	19	7	17	9	447	Yamanashi
31	Tottori	30	29	25		16		8	19	10	9	13	7	4	11	13	13	13	12	9	8	13	18	5	285	Tottori
	total	4,012	3,886	3,525		2,918		2,643	2,488	2,351	2,268	2,044	2,178	2,112	2,184	2,095	2,078	1,898	1,819	1,976	1,967	1,845	1,926	2,053	50,266	total

Data source : <https://anzeninfo.mhlw.go.jp/user/anzen/tok/anst00.htm>

Return to https://www.jisha.or.jp/english/statistics/202211_23.html