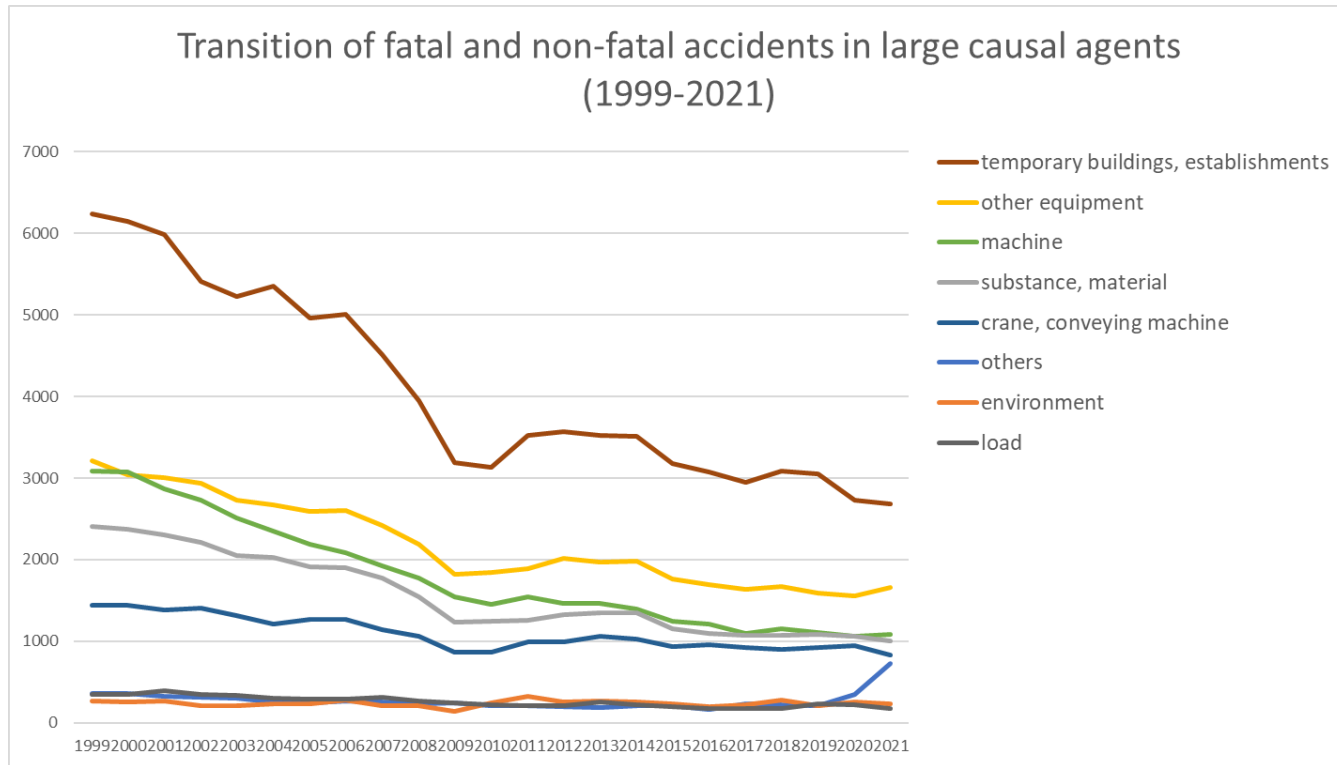
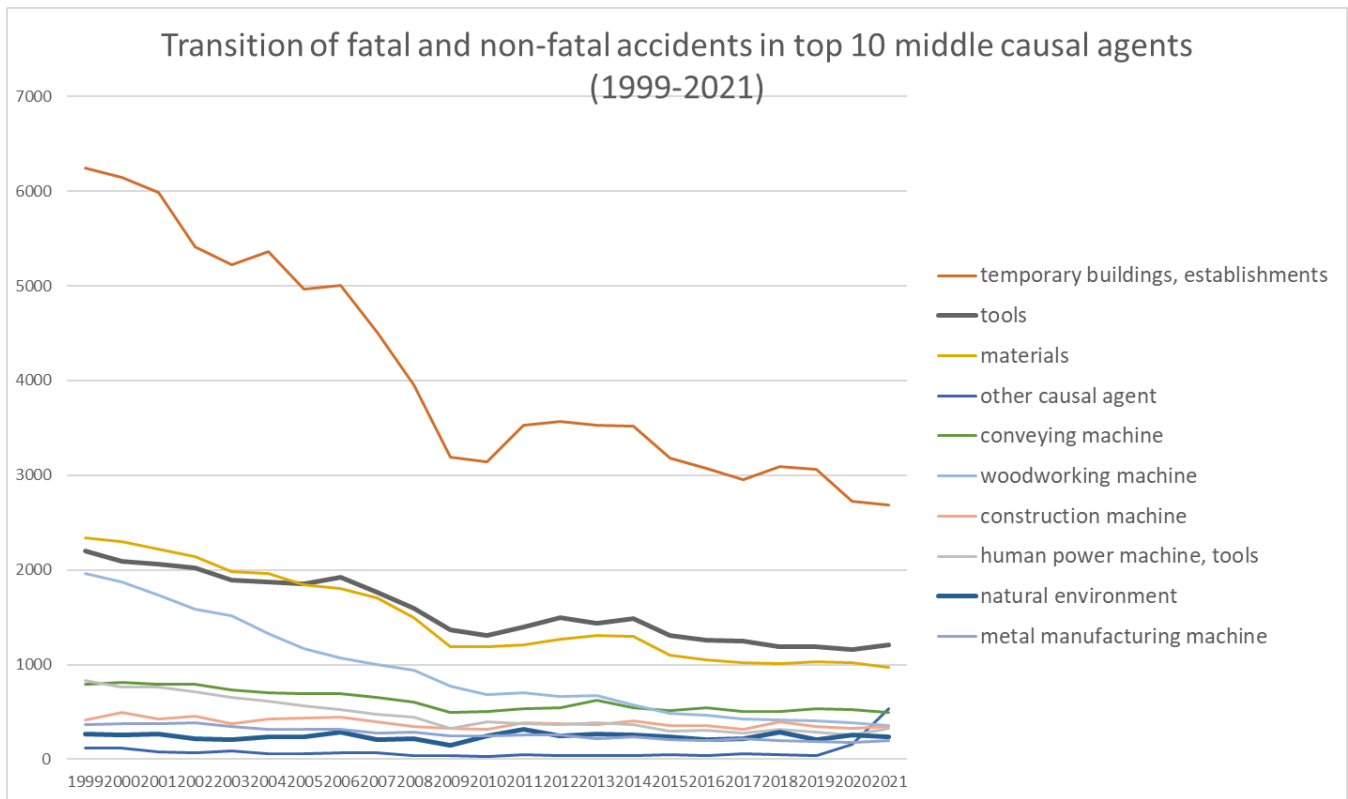


Transition of fatal and non-fatal accidents in each element like as causal agents, type of accidents, etc. in code no. 0302 construction work (1999-2021)

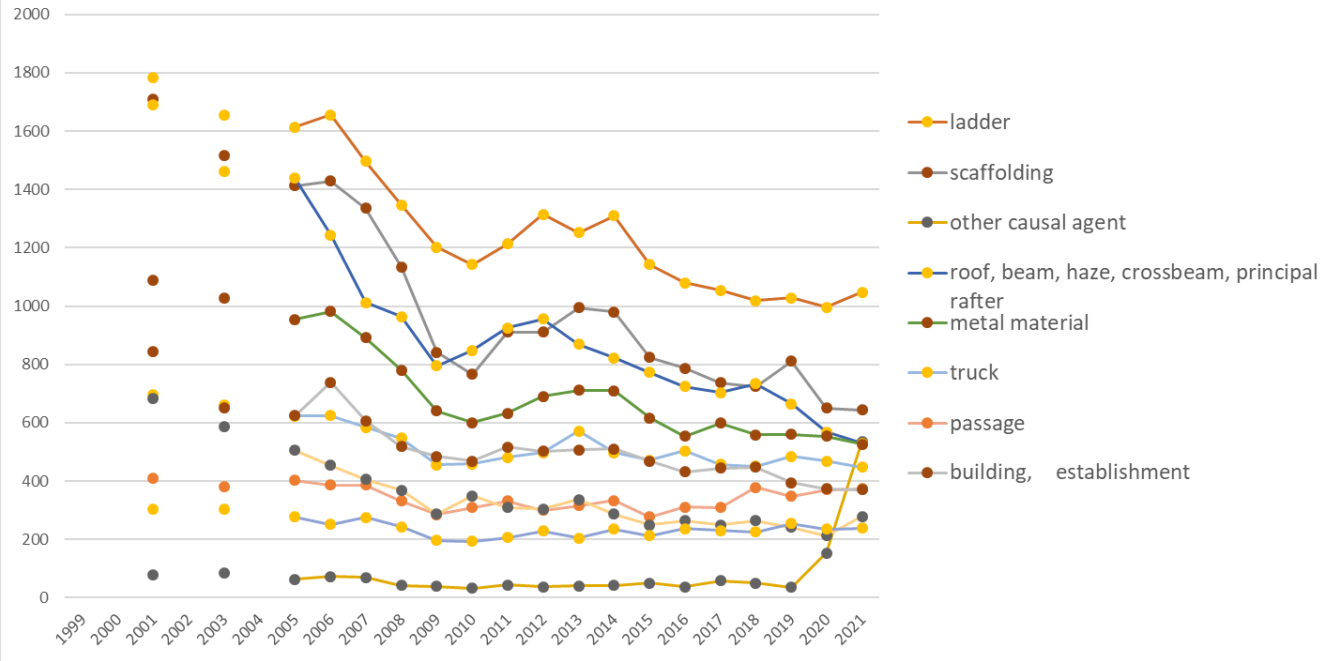


Transition of fatal and non-fatal accidents in large causal agents in code no. 0302 construction work (1999-2021)



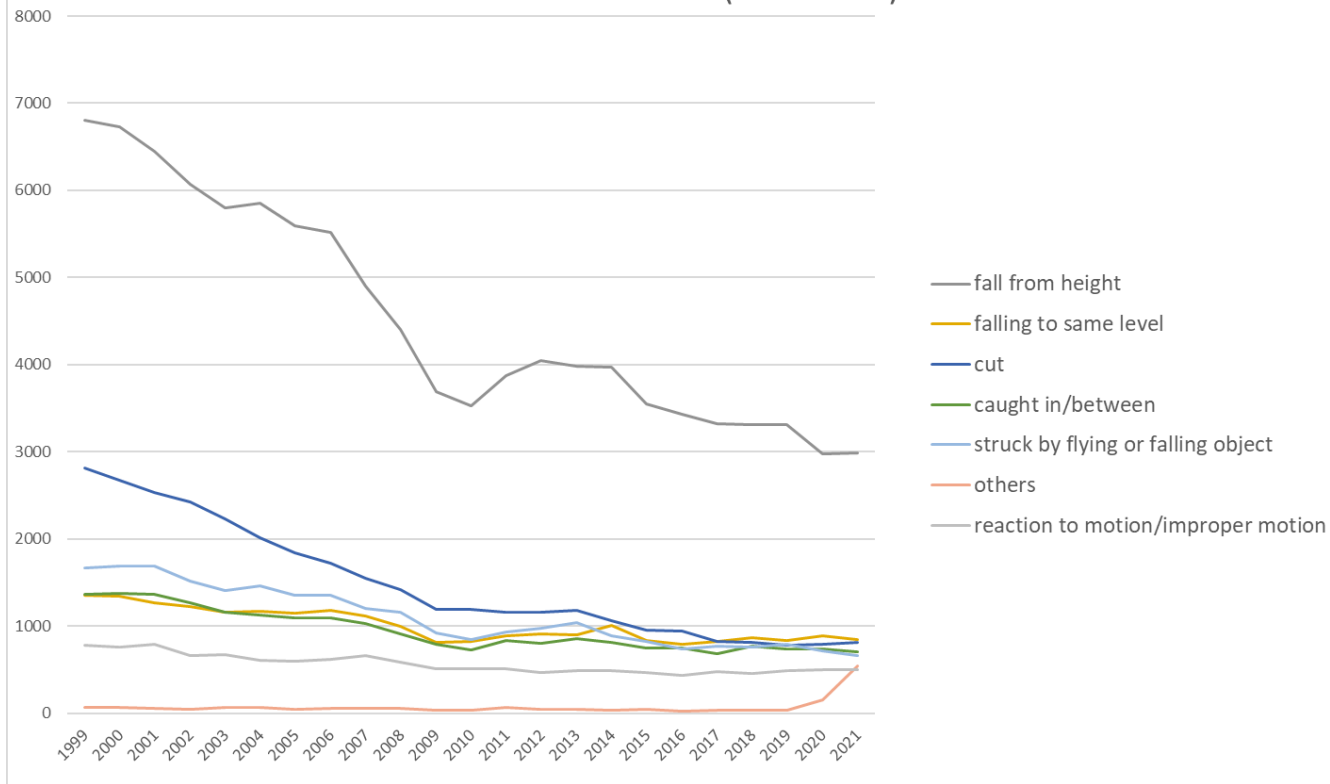
Transition of fatal and non-fatal accidents in middle causal agents in code no. 0302 construction work (1999-2021)

### Transition of fatal and non-fatal accidents in top 10 small causal agents (1999-2021)



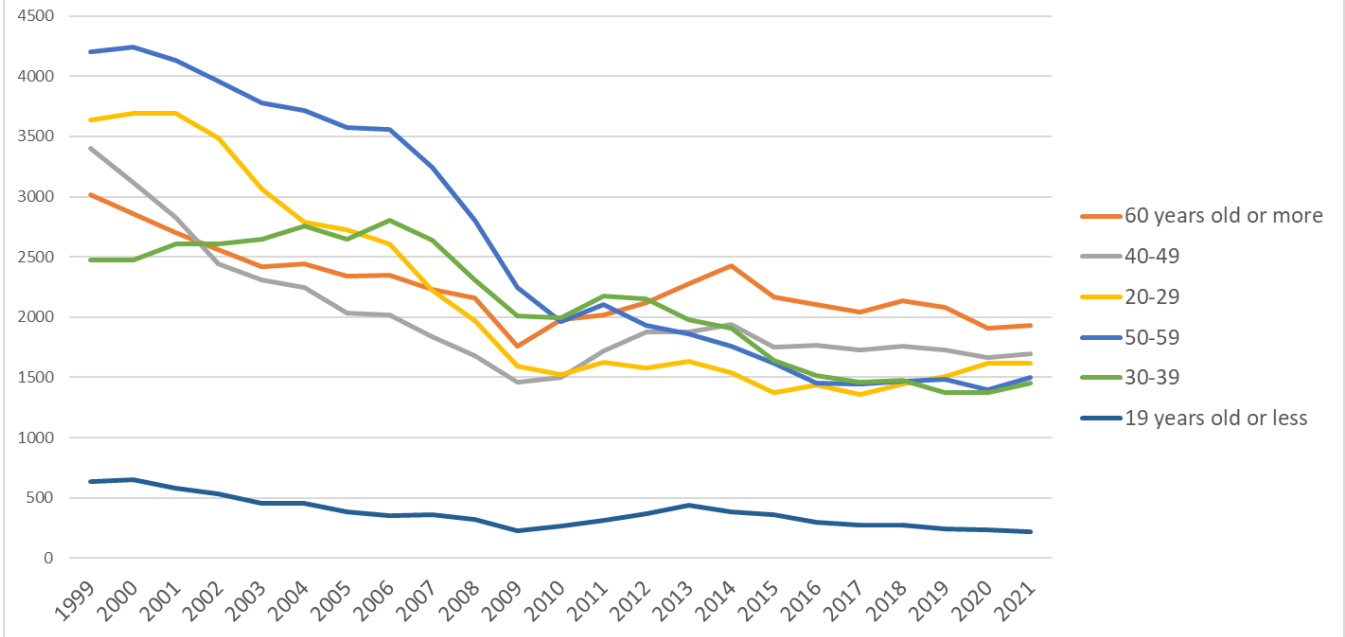
Transition of fatal and non-fatal accidents in small causal agents in code no. 0302 construction work (1999-2021)

Transition of fatal and non-fatal accidents in top 7 type of accidents  
(1999-2021)



Transition of fatal and non-fatal accidents in type of accidents in code no. 0302 construction work (1999-2021)

Transition of fatal and non-fatal accidents in workers ages (1999-2021)



Transition of fatal and non-fatal accidents in workers ages in code no. 0302 construction work (1999-2021)































Transition of fatal and non-fatal accidents in workers scales in code no. 0302 construction work (1999-2021)

code	Workers scale	1999	2000	2001	2002	2003	2004	2005	2006	2007	2008	2009	2010	2011	2012	2013	2014	2015	2016	2017	2018	2019	2020	2021	total	Workers scale
1	9 workers or less	12,011	11,695	11,371	10,688	10,053	10,019	9,459	9,343	8,570	7,647	6,454	6,435	6,834	6,791	6,764	6,628	5,959	5,652	5,450	5,545	5,414	5,055	5,084	178,921	9 workers or less
2	10-29	3,961	3,894	3,785	3,550	3,377	3,146	3,071	3,117	2,869	2,566	2,058	2,074	2,233	2,388	2,396	2,373	2,095	2,123	2,006	2,124	2,121	2,202	2,274	61,803	10-29
3	30-49	834	873	795	780	706	705	663	683	626	602	445	421	537	487	524	573	482	473	505	532	515	539	539	13,839	30-49
4	50-99	354	368	372	367	344	352	335	380	303	274	221	173	237	233	250	249	244	206	210	225	231	239	286	6,453	50-99
5	100-299	168	173	175	164	159	154	146	141	134	127	84	80	97	94	105	101	103	92	115	102	97	112	149	2,872	100-299
6	300 workers or more	32	34	40	32	34	28	29	30	37	29	28	25	20	28	30	31	26	23	20	26	39	47	71	739	300 workers or more
	total	17,360	17,037	16,538	15,581	14,673	14,404	13,703	13,694	12,539	11,245	9,290	9,208	9,958	10,021	10,069	9,955	8,909	8,569	8,306	8,554	8,417	8,194	8,403	264,627	total

Transition of fatal and non-fatal accidents in months in code no. 0302 construction work (1999-2021)

code	Month	1999	2000	2001	2002	2003	2004	2005	2006	2007	2008	2009	2010	2011	2012	2013	2014	2015	2016	2017	2018	2019	2020	2021	total	Month
8	August	1,469	1,559	1,292	1,293	1,215	1,190	1,223	1,285	1,130	926	812	853	906	896	867	817	712	763	725	771	716	747	821	22,988	August
7	July	1,605	1,586	1,616	1,507	1,349	1,459	1,271	1,186	1,142	1,104	853	877	935	914	969	918	893	824	803	848	804	780	773	25,016	July
9	September	1,561	1,459	1,437	1,324	1,343	1,339	1,182	1,267	1,107	940	798	825	862	855	856	886	827	774	686	714	779	742	771	23,334	September
6	June	1,575	1,476	1,455	1,295	1,203	1,228	1,189	1,197	1,143	959	812	798	874	873	831	800	781	737	731	715	662	720	761	22,815	June
3	March	1,447	1,441	1,483	1,337	1,258	1,146	1,129	1,138	1,109	975	779	730	893	829	825	861	743	714	713	729	717	708	742	22,446	March
4	April	1,362	1,385	1,366	1,366	1,202	1,118	1,178	1,063	966	984	759	735	745	758	808	902	708	679	670	703	708	732	713	21,610	April
11	November	1,507	1,427	1,387	1,345	1,157	1,296	1,177	1,167	1,078	871	767	798	850	847	899	784	720	701	736	723	695	651	682	22,265	November
10	October	1,583	1,593	1,526	1,447	1,392	1,283	1,170	1,243	1,094	1,004	843	802	903	909	908	893	805	740	701	787	760	648	658	23,692	October
2	February	1,308	1,350	1,331	1,126	1,157	1,094	1,057	1,025	983	960	764	713	724	799	734	806	698	709	634	648	681	673	635	20,609	February
1	January	1,218	1,106	1,119	1,058	1,013	1,006	996	1,013	895	821	707	659	680	722	718	743	714	637	626	646	644	551	628	18,920	January
5	May	1,426	1,348	1,368	1,316	1,205	1,125	1,098	1,098	1,012	938	707	698	742	851	851	825	677	673	631	633	679	596	626	21,123	May
12	December	1,299	1,307	1,158	1,167	1,179	1,120	1,033	1,012	880	763	689	720	844	768	803	720	631	618	650	637	572	646	593	19,809	December

	total	17,360	17,037	16,538	15,581	14,673	14,404	13,703	13,694	12,539	11,245	9,290	9,208	9,958	10,021	10,069	9,955	8,909	8,569	8,306	8,554	8,417	8,194	8,403	264,627	total
--	-------	--------	--------	--------	--------	--------	--------	--------	--------	--------	--------	-------	-------	-------	--------	--------	-------	-------	-------	-------	-------	-------	-------	-------	---------	-------

Transition of fatal and non-fatal accidents in prefectures in code no. 0302 construction work (1999-2021)

code	Prefecture	1999	2000	2001	2002	2003	2004	2005	2006	2007	2008	2009	2010	2011	2012	2013	2014	2015	2016	2017	2018	2019	2020	2021	total	Prefecture
13	Tokyo	1,234	1,267	1,384		1,345		1,269	1,253	1,352	1,191	948	935	1,016	985	1,063	1,063	838	799	832	816	842	695	760	21,887	Tokyo
1	Hokkaido	1,050	967	887		768		782	754	631	614	500	536	506	546	549	596	563	502	463	505	537	472	502	13,230	Hokkaido
14	Kanagawa	978	993	990		904		804	854	792	675	523	567	548	626	603	567	514	495	445	449	487	488	478	13,780	Kanagawa
27	Osaka	1,089	1,139	1,188		966		810	885	797	714	563	492	537	597	504	497	425	421	410	470	493	374	393	13,764	Osaka
40	Fukuoka	737	718	663		550		662	594	549	465	390	375	376	392	390	418	336	363	358	360	305	362	385	9,748	Fukuoka
11	Saitama	556	639	627		673		603	585	662	499	453	472	464	446	488	539	427	380	388	362	328	343	357	10,291	Saitama
23	Aichi	669	645	702		553		517	566	434	445	361	338	376	330	391	369	356	349	333	341	325	362	354	9,116	Aichi
12	Chiba	555	657	642		535		462	504	474	448	395	375	375	352	368	406	370	295	296	283	343	392	299	8,826	Chiba
15	Niigata	526	484	509		395		480	478	403	412	347	359	324	318	336	276	287	228	230	246	247	247	254	7,386	Niigata
28	Hyogo	854	823	717		644		559	571	548	432	363	356	341	323	353	363	303	324	255	269	247	280	246	9,171	Hyogo
22	Shizuoka	577	546	493		435		415	465	407	416	322	302	325	340	359	314	256	265	258	258	256	261	240	7,510	Shizuoka
8	Ibaraki	340	337	310		249		282	229	219	212	170	170	279	241	176	192	167	165	181	153	154	164	237	4,627	Ibaraki
7	Fukushima	291	263	276		275		234	231	187	194	179	146	226	254	235	262	187	181	164	145	154	187	194	4,465	Fukushima
4	Miyagi	268	288	242		280		237	214	222	196	174	167	334	340	280	239	216	239	179	156	191	156	172	4,790	Miyagi
26	Kyoto	409	436	388		378		317	317	294	252	184	218	227	225	239	233	204	170	187	202	160	169	169	5,378	Kyoto
34	Hiroshima	419	418	436		342		318	291	279	234	188	190	192	188	192	176	179	188	156	182	182	178	159	5,087	Hiroshima
6	Yamagata	261	256	233		180		210	192	138	140	96	134	122	167	161	139	117	111	100	156	107	102	159	3,281	Yamagata
43	Kumamoto	265	263	205		207		208	198	190	162	144	140	144	148	169	139	158	184	248	189	149	158	158	3,826	Kumamoto
24	Mie	383	369	362		308		259	297	253	220	193	200	215	169	186	174	158	164	165	181	155	126	157	4,694	Mie
20	Nagano	353	322	335		300		258	244	230	189	152	161	163	163	162	167	187	152	147	168	147	157	146	4,303	Nagano
2	Aomori	267	222	249		197		151	158	134	131	111	113	127	122	131	141	108	140	125	127	142	117	146	3,159	Aomori
3	Iwate	227	201	212		165		175	171	156	133	126	110	186	156	187	148	148	149	140	135	122	120	144	3,311	Iwate

47	Okinawa	77	107	79		82		108	100	94	108	112	87	102	108	109	143	124	112	158	150	164	139	143	2,406	Okinawa
21	Gifu	365	353	333		280		238	237	233	186	159	145	147	122	152	146	127	128	121	139	128	131	139	4,009	Gifu
10	Gunma	303	298	281		228		216	207	186	161	126	143	147	162	157	175	146	118	138	163	139	133	139	3,766	Gunma
46	Kagoshima	217	203	168		164		170	150	131	139	109	95	122	131	158	153	161	148	143	162	159	159	132	3,174	Kagoshima
5	Akita	256	216	213		211		171	222	161	147	131	128	150	145	123	154	115	116	115	131	115	101	123	3,244	Akita
9	Tochigi	209	214	172		177		164	160	154	165	140	136	168	162	156	110	127	137	111	113	92	109	122	3,098	Tochigi
42	Nagasaki	211	193	184		178		127	169	147	95	96	85	116	112	87	101	105	104	100	99	107	124	120	2,660	Nagasaki
16	Toyama	236	200	216		151		176	148	136	123	100	102	111	138	109	93	110	90	97	94	98	94	112	2,734	Toyama
35	Yamaguchi	242	236	194		186		167	166	119	124	96	101	124	91	108	95	109	127	87	95	96	83	101	2,747	Yamaguchi
38	Ehime	253	209	206		190		158	160	137	124	99	101	103	134	107	90	104	93	92	98	80	91	99	2,728	Ehime
33	Okayama	338	321	318		273		244	222	209	160	140	154	154	143	145	169	145	120	140	129	131	119	96	3,870	Okayama
44	Oita	258	243	193		219		181	191	150	126	105	92	124	92	105	117	101	107	70	91	96	108	94	2,863	Oita
45	Miyazaki	165	148	130		144		123	128	119	103	81	87	80	90	71	88	60	88	87	85	84	99	91	2,151	Miyazaki
30	Wakayama	223	197	201		163		150	153	129	110	90	101	86	113	97	88	82	85	78	84	82	73	90	2,475	Wakayama
17	Ishikawa	112	148	129		106		88	107	75	85	100	80	80	83	89	97	75	76	75	81	71	65	82	1,904	Ishikawa
29	Nara	234	224	220		190		172	140	127	145	117	101	92	96	113	101	87	77	80	81	81	78	78	2,634	Nara
37	Kagawa	188	164	179		140		159	143	124	97	93	94	75	83	93	81	74	90	72	96	81	48	76	2,250	Kagawa
25	Shiga	179	161	173		157		118	165	124	119	81	73	94	92	79	94	87	62	65	58	66	88	68	2,203	Shiga
39	Kochi	196	178	167		136		139	103	104	95	83	72	69	71	72	61	77	71	84	70	76	70	66	2,060	Kochi
41	Saga	133	124	127		108		127	110	101	95	83	65	85	92	103	94	95	89	72	86	80	94	63	2,026	Saga
18	Fukui	135	136	126		105		105	122	97	77	67	86	74	74	49	52	62	42	47	83	67	63	59	1,728	Fukui
36	Tokushima	174	171	157		154		121	99	109	109	82	89	87	91	93	77	79	75	75	60	81	64	56	2,103	Tokushima
32	Shimane	155	115	131		126		118	106	90	74	56	53	72	57	67	57	50	60	48	46	50	55	53	1,639	Shimane
19	Yamanashi	107	119	94		79		81	81	72	59	35	53	50	64	62	65	68	51	38	48	64	50	53	1,393	Yamanashi
31	Tottori	86	106	97		77		70	54	60	45	27	29	43	47	43	36	35	39	53	59	56	46	39	1,147	Tottori
	total	17,360	17,037	16,538		14,673		13,703	13,694	12,539	11,245	9,290	9,208	9,958	10,021	10,069	9,955	8,909	8,569	8,306	8,554	8,417	8,194	8,403	234,642	total

Data source : <https://anzeninfo.mhlw.go.jp/user/anzen/tok/anst00.htm>

Return to [https://www.jisha.or.jp/english/statistics/202211\\_23.html](https://www.jisha.or.jp/english/statistics/202211_23.html)