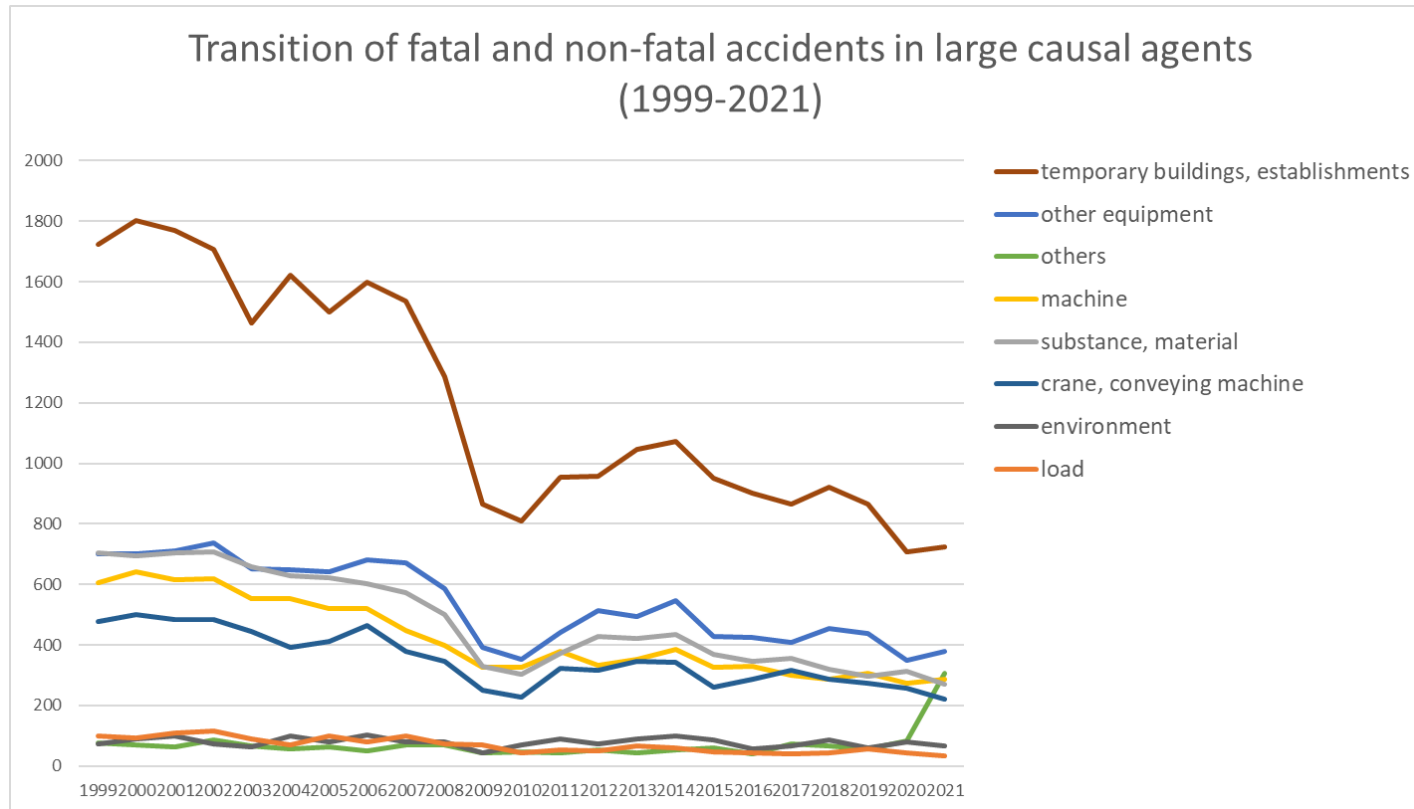
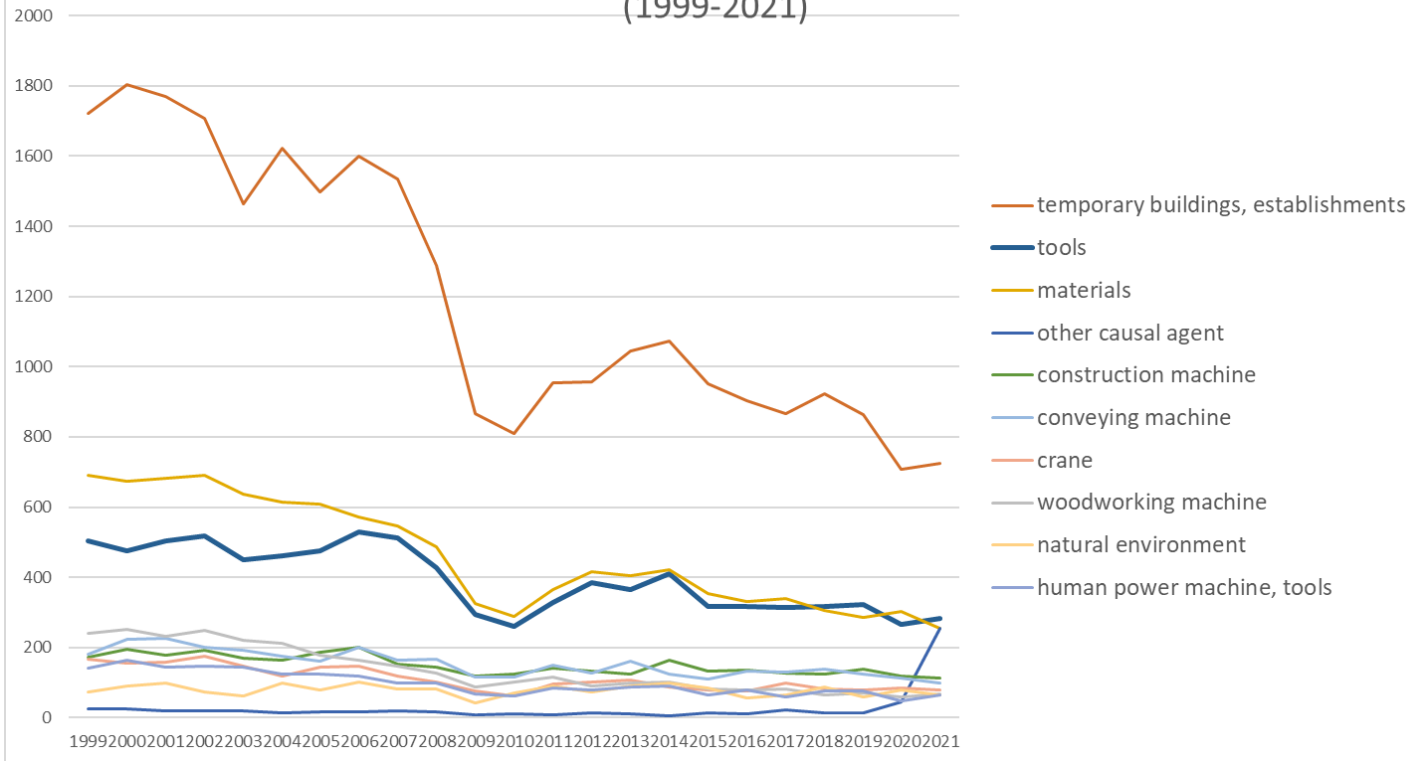


Transition of fatal and non-fatal accidents in each element like as causal agents, type of accidents, etc. in code no. 030201 steel frame/reinforced concrete house construction work (1999-2021)



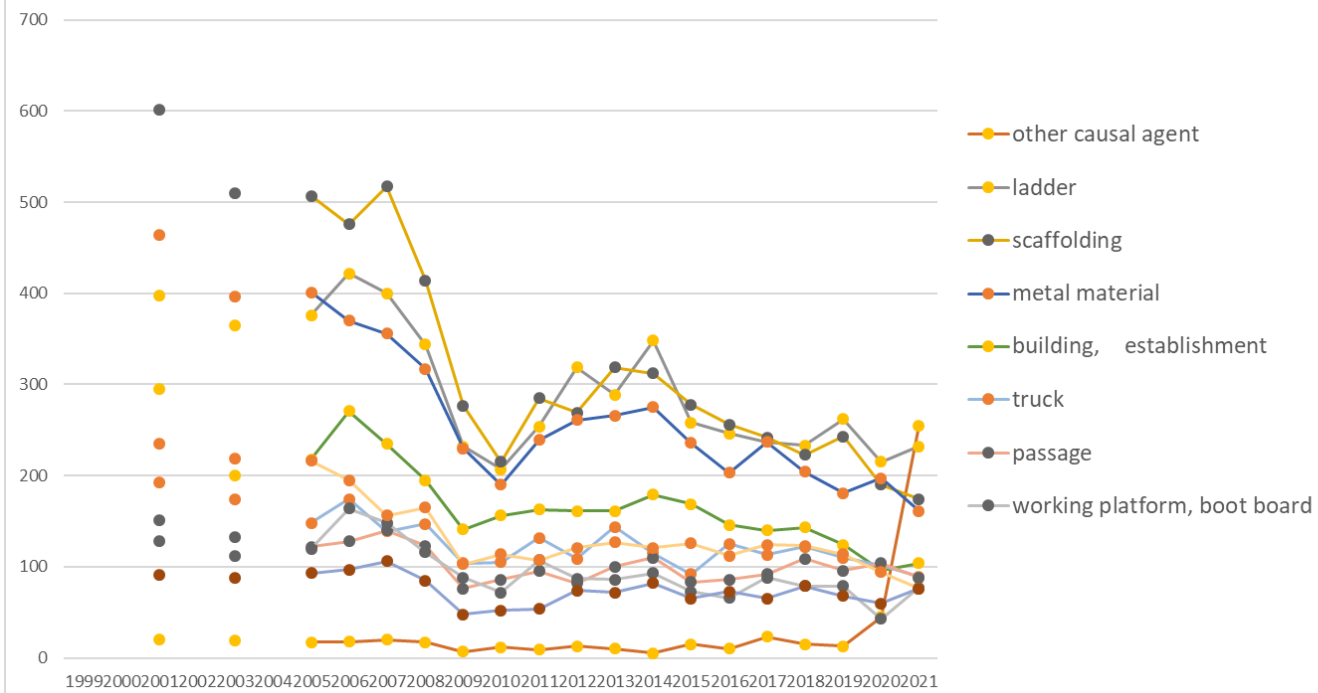
Transition of fatal and non-fatal accidents in large causal agents in code no. 030201 steel frame/reinforced concrete house construction work (1999-2021)

Transition of fatal and non-fatal accidents in top 10 middle causal agents (1999-2021)



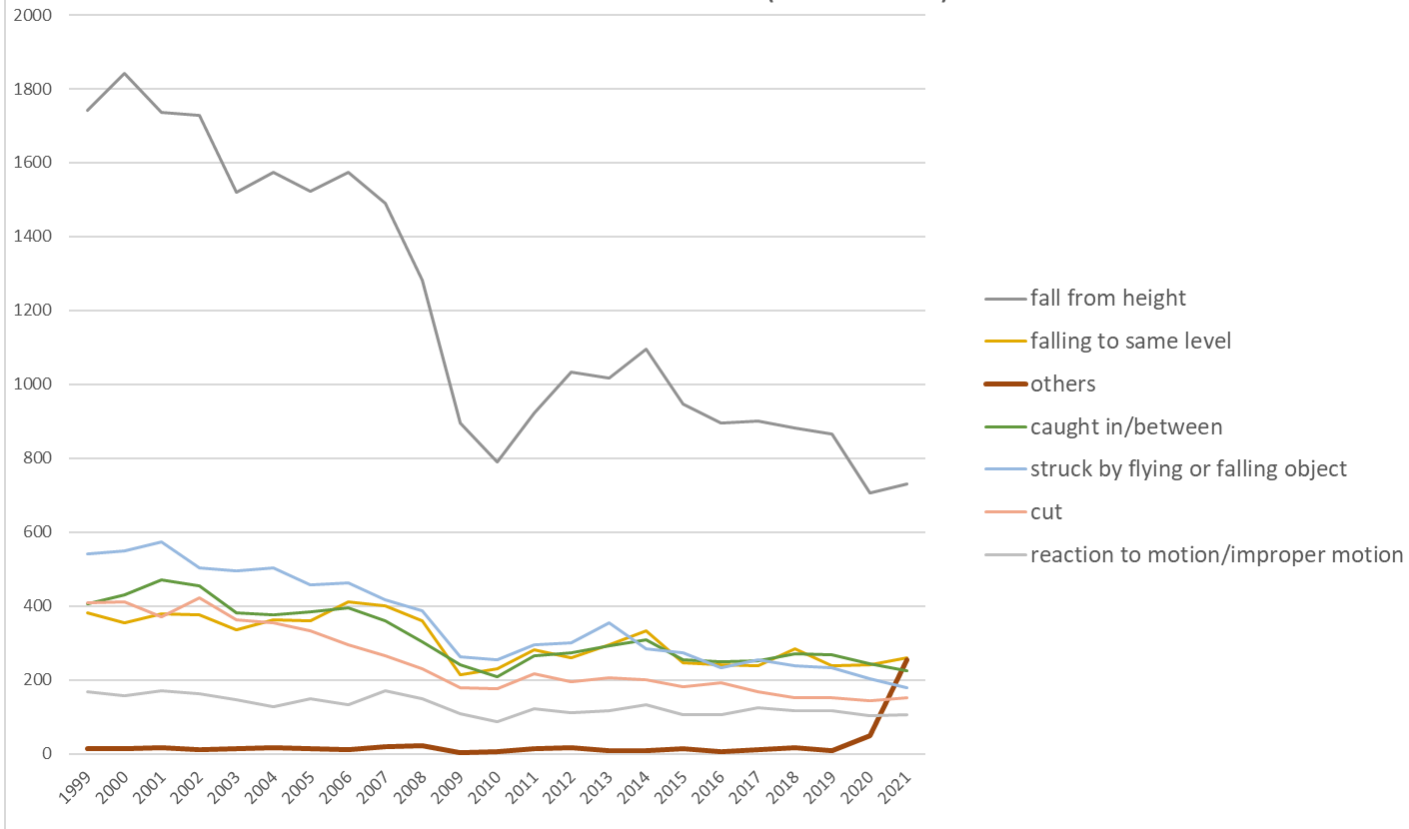
Transition of fatal and non-fatal accidents in middle causal agents in code no. 030201 steel frame/reinforced concrete house construction work (1999-2021)

Transition of fatal and non-fatal accidents in top 10 small causal agents (1999-2021)



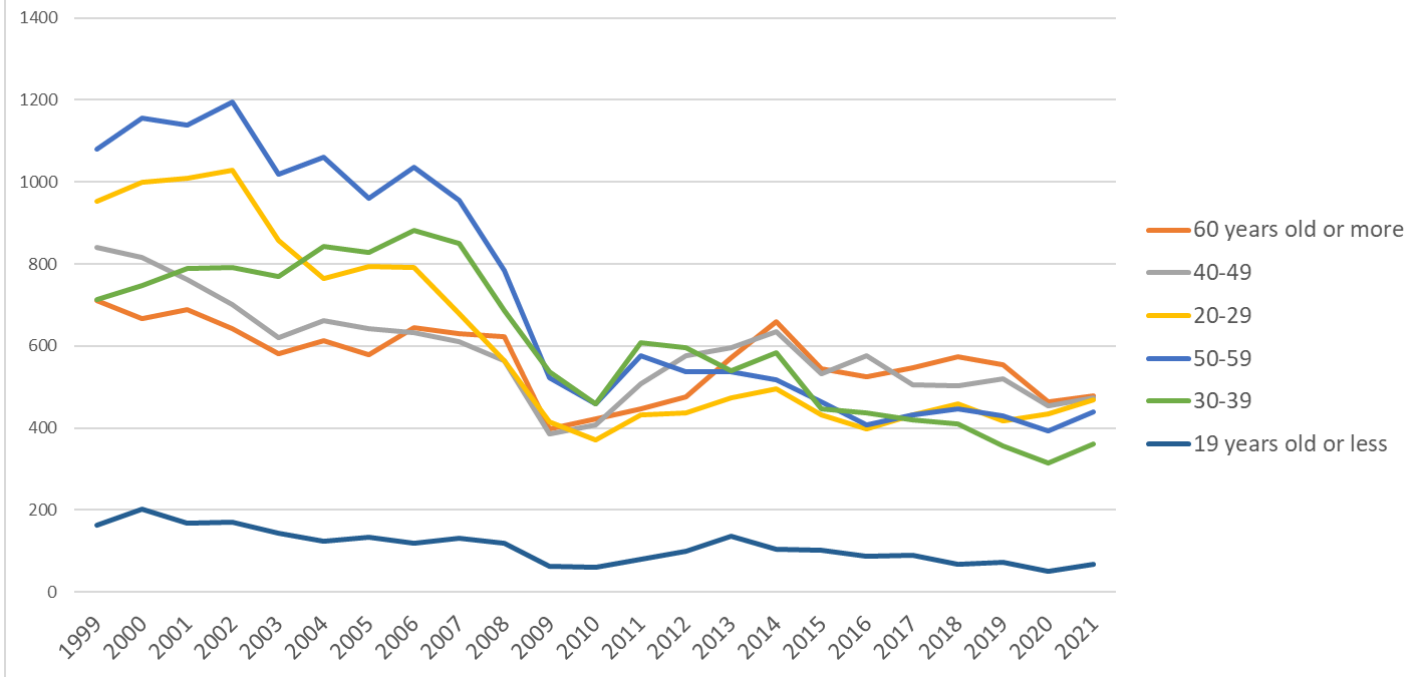
Transition of fatal and non-fatal accidents in small causal agents in code no. 030201 steel frame/reinforced concrete house construction work (1999-2021)

Transition of fatal and non-fatal accidents in top 7 type of accidents
(1999-2021)



Transition of fatal and non-fatal accidents in type of accidents in code no. 030201 steel frame/reinforced concrete house construction work (1999-2021)

Transition of fatal and non-fatal accidents in workers ages (1999-2021)



Transition of fatal and non-fatal accidents in workers ages in code no. 030201 steel frame/reinforced concrete house construction work (1999-2021)

33	Okayama	58	48	50		53		48	55	29	26	20	25	30	34	38	49	31	26	41	40	36	27	21	785	Okayama
10	Gunma	33	49	43		46		46	34	38	30	20	24	31	16	33	40	41	37	32	37	45	37	20	732	Gunma
29	Nara	45	48	41		37		33	29	21	31	31	11	18	28	26	28	18	30	27	22	12	25	20	581	Nara
6	Yamagata	41	42	40		30		26	39	20	18	6	24	16	20	25	18	13	22	19	28	11	19	19	496	Yamagata
2	Aomori	43	54	48		35		31	25	28	29	29	18	21	22	31	39	30	35	28	20	36	24	18	644	Aomori
5	Akita	24	26	22		29		19	23	33	27	15	18	23	17	21	24	24	22	21	21	26	16	18	469	Akita
36	Tokushima	65	36	39		40		23	24	23	20	12	21	22	33	25	23	17	17	21	17	17	12	17	524	Tokushima
19	Yamanashi	19	26	15		16		18	14	11	8	6	9	11	6	5	8	11	11	6	10	14	15	17	256	Yamanashi
25	Shiga	51	42	49		56		49	57	43	45	24	15	20	26	16	24	30	13	18	16	27	25	16	662	Shiga
35	Yamaguchi	63	41	28		41		36	31	26	33	19	17	31	30	28	22	50	38	17	27	22	13	15	628	Yamaguchi
37	Kagawa	40	46	49		41		51	43	35	25	29	18	15	27	24	15	17	24	23	22	20	8	13	585	Kagawa
42	Nagasaki	73	55	44		46		27	46	25	14	18	14	24	21	20	23	22	23	22	18	14	19	13	581	Nagasaki
39	Kochi	46	51	32		22		30	24	26	26	25	19	14	19	14	16	9	19	25	18	14	14	13	476	Kochi
41	Saga	22	25	17		9		27	22	25	17	20	8	21	18	30	12	24	14	11	20	21	14	13	390	Saga
44	Oita	45	34	21		39		36	36	28	23	15	18	32	27	18	19	17	18	11	23	14	21	11	506	Oita
45	Miyazaki	27	47	24		28		28	31	24	27	17	21	20	21	12	15	9	19	13	17	14	23	10	447	Miyazaki
18	Fukui	15	26	32		16		35	28	13	17	11	18	18	14	13	14	20	10	12	15	12	12	8	359	Fukui
31	Tottori	23	21	17		20		13	6	12	10	7	5	5	12	11	13	8	10	16	10	7	4	8	238	Tottori
32	Shimane	23	21	21		13		24	15	13	17	7	10	12	6	7	6	5	10	5	6	8	5	7	241	Shimane
	total	4,462	4,593	4,556		3,990		3,937	4,106	3,858	3,338	2,322	2,179	2,654	2,720	2,854	2,996	2,526	2,431	2,427	2,463	2,351	2,110	2,288	65,161	total

Data source : <https://anzeninfo.mhlw.go.jp/user/anzen/tok/anst00.htm>

Return to https://www.jisha.or.jp/english/statistics/202211_23.html