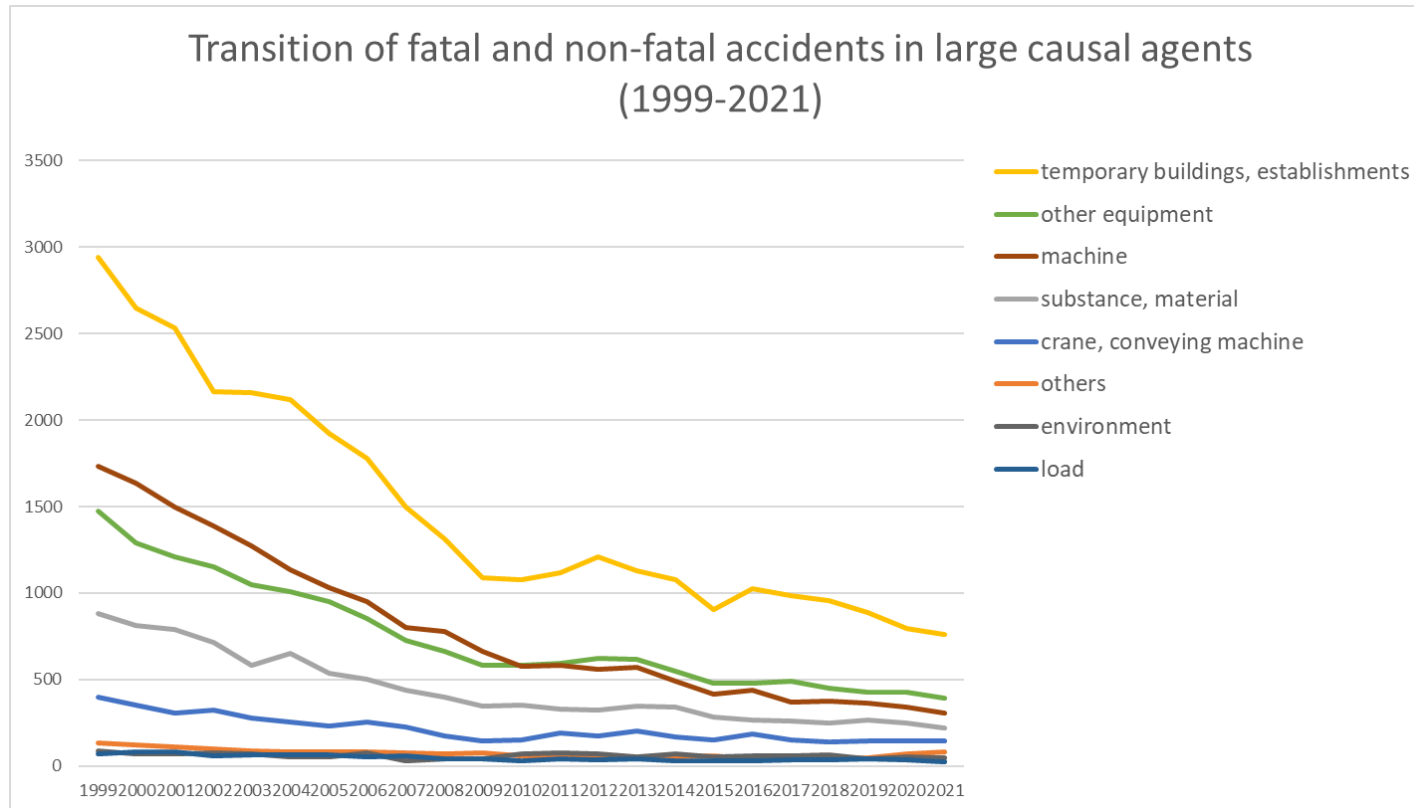
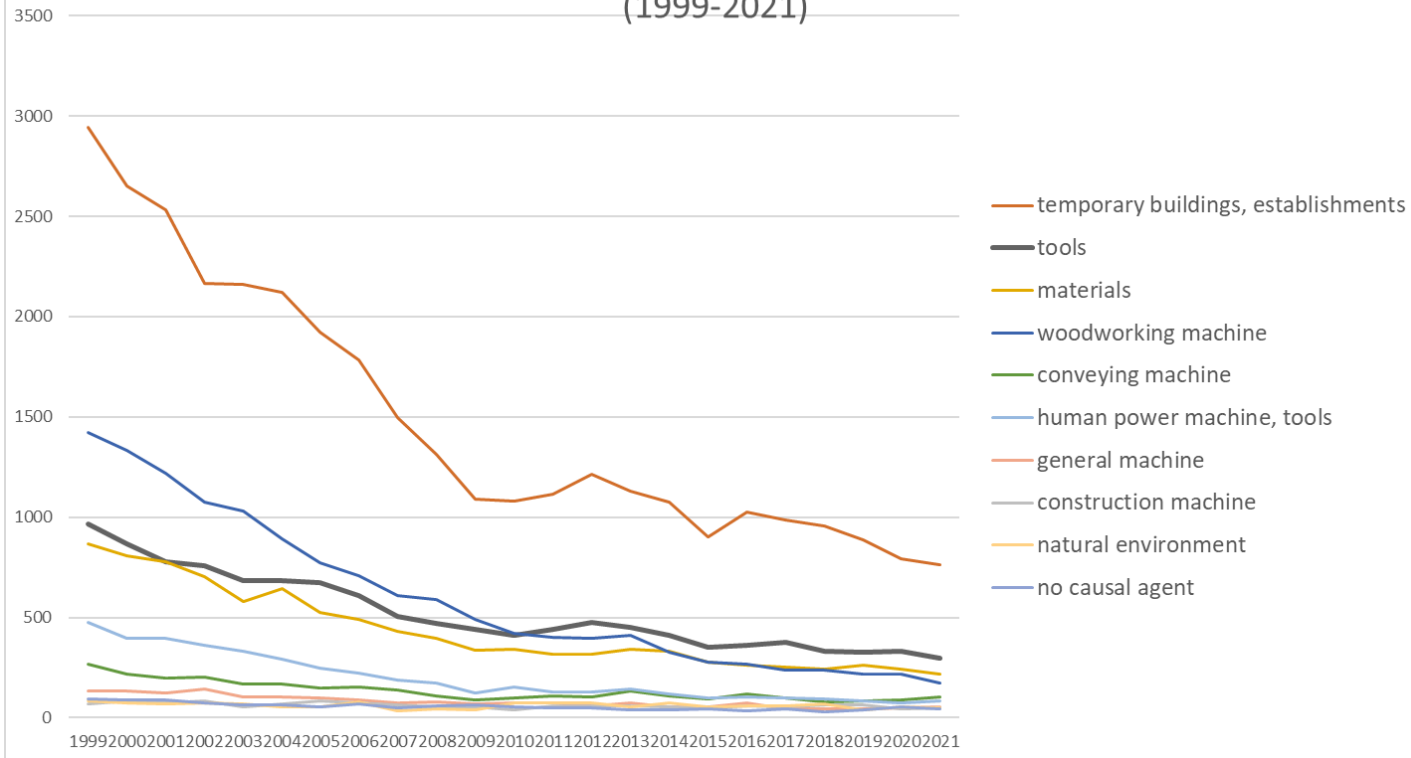


Transition of fatal and non-fatal accidents in each element like as causal agents, type of accidents, etc. in code no. 030202 wooden house construction work (1999-2021)



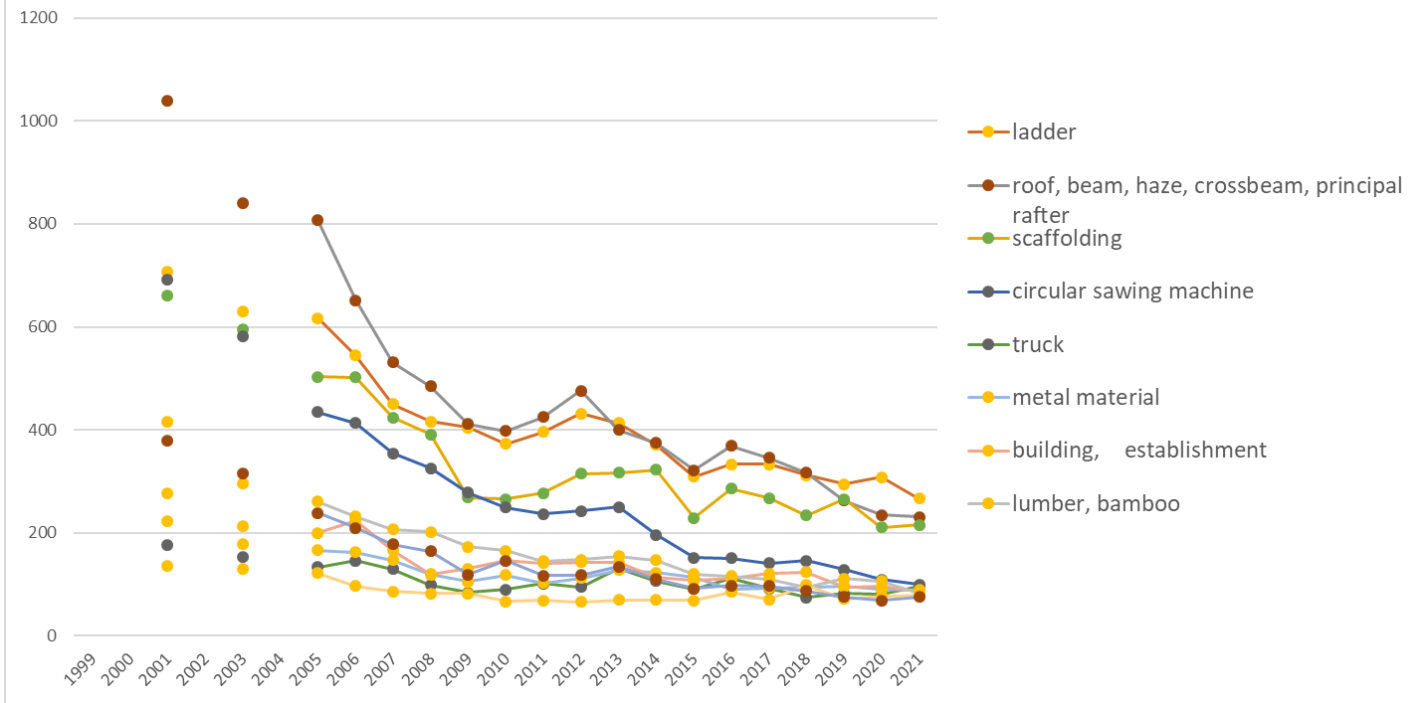
Transition of fatal and non-fatal accidents in large causal agents in code no. 030202 wooden house construction work (1999-2021)

### Transition of fatal and non-fatal accidents in top 10 middle causal agents (1999-2021)



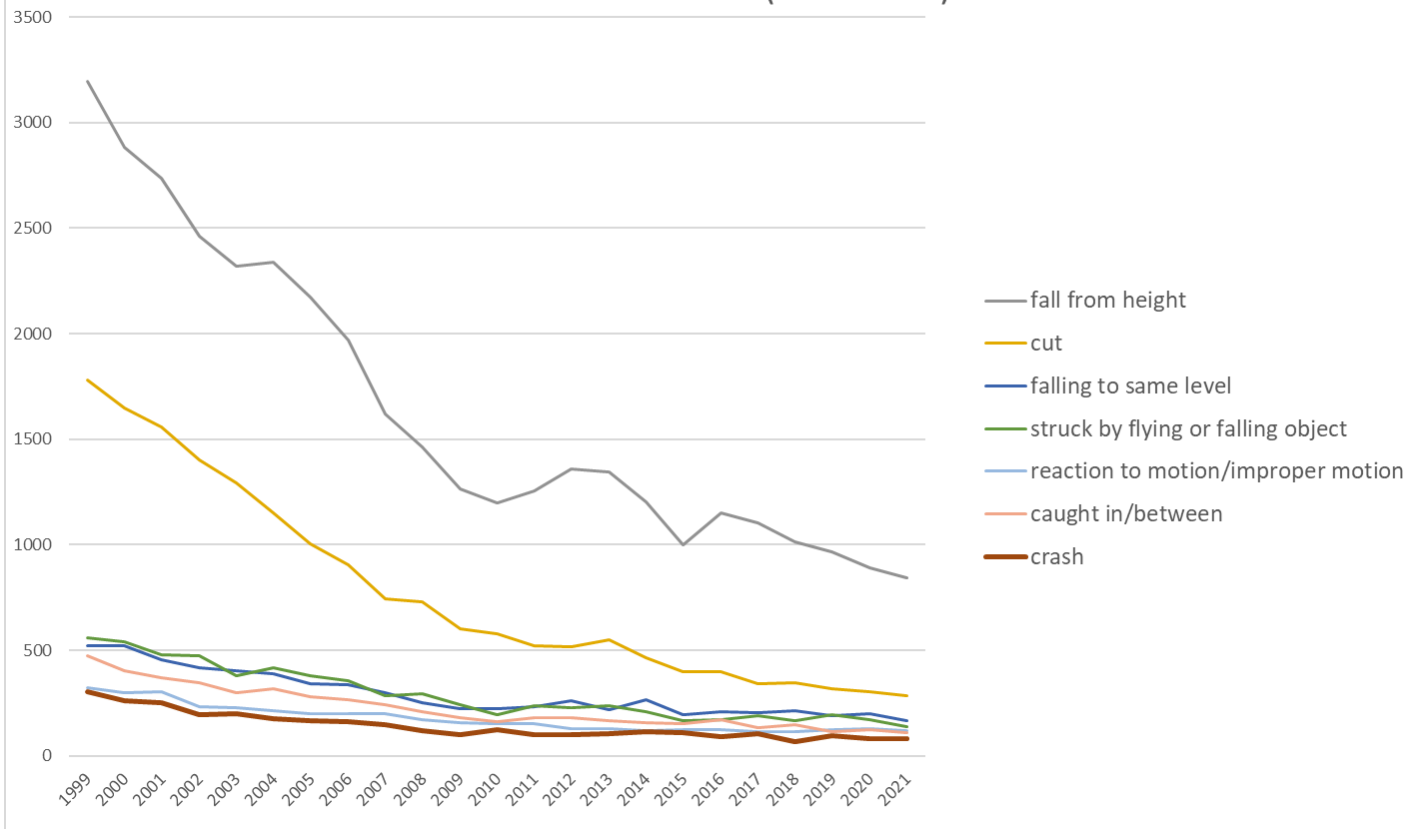
Transition of fatal and non-fatal accidents in middle causal agents in code no. 030202 wooden house construction work (1999-2021)

## Transition of fatal and non-fatal accidents in top 10 small causal agents (1999-2021)



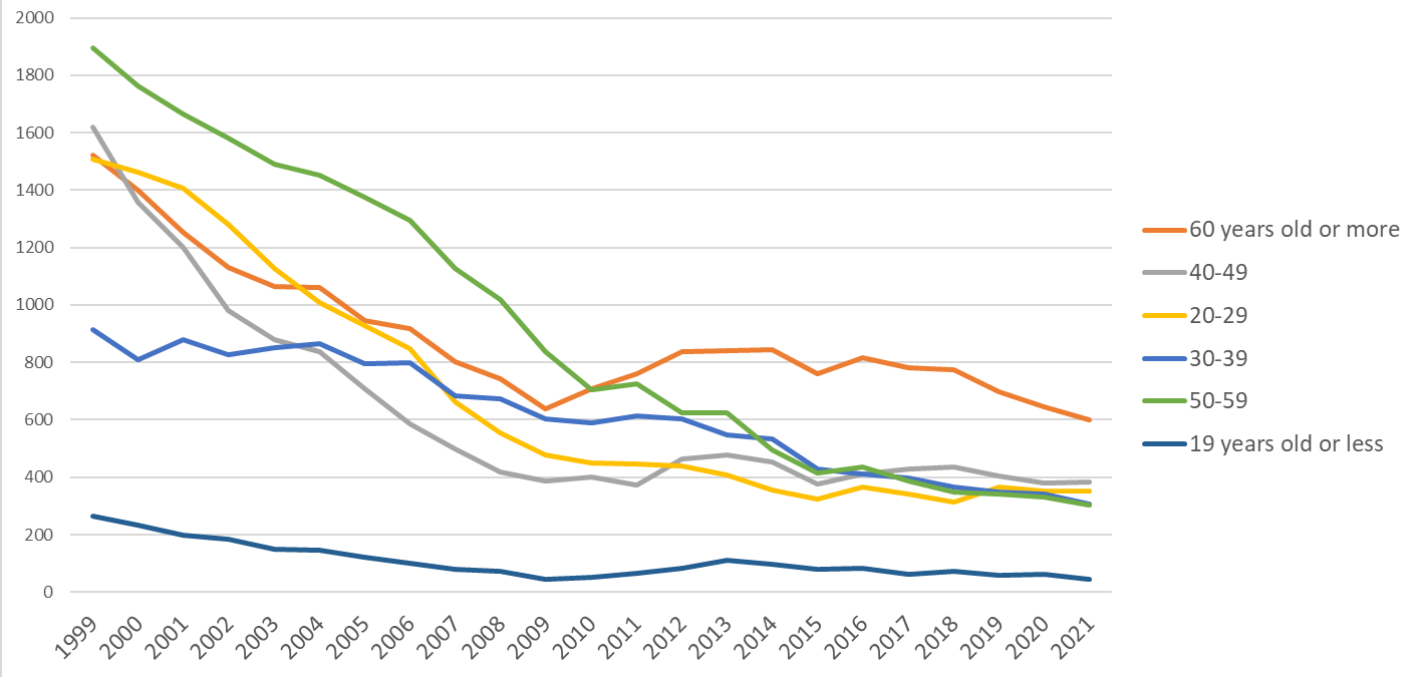
Transition of fatal and non-fatal accidents in small causal agents in code no. 030202 wooden house construction work (1999-2021)

Transition of fatal and non-fatal accidents in top 7 type of accidents  
(1999-2021)



Transition of fatal and non-fatal accidents in type of accidents in code no. 030202 wooden house construction work (1999-2021)

Transition of fatal and non-fatal accidents in workers ages (1999-2021)



Transition of fatal and non-fatal accidents in workers ages in code no. 030202 wooden house construction work (1999-2021)































16	fire	2		2	1	1	2		1			3		1	1			1	1	1	2	1	1		21	fire
15	burst	1						1	2	1				1	2		1			1					10	burst
18	traffic accident (others)	2	1						1	1											1				6	traffic accident (others)
	total	7,723	7,023	6,604	5,982	5,566	5,369	4,873	4,548	3,856	3,481	2,988	2,902	2,982	3,052	3,010	2,777	2,378	2,525	2,400	2,311	2,218	2,117	1,983	88,668	total

Transition of fatal and non-fatal accidents in workers ages in code no. 030202 wooden house construction work (1999-2021)

code	Age	1999	2000	2001	2002	2003	2004	2005	2006	2007	2008	2009	2010	2011	2012	2013	2014	2015	2016	2017	2018	2019	2020	2021	total	Age
6	60 years old or more	1,522	1,398	1,252	1,131	1,065	1,061	946	918	802	742	640	708	759	839	841	844	759	817	780	775	699	647	599	20,544	60 years old or more
4	40-49	1,621	1,359	1,201	979	880	837	707	586	500	419	388	402	372	463	477	453	376	412	430	434	404	381	382	14,463	40-49
2	20-29	1,507	1,461	1,407	1,280	1,129	1,007	928	848	662	554	476	450	445	438	407	355	323	366	342	313	365	353	351	15,767	20-29
3	30-39	915	809	881	827	852	867	795	798	685	674	603	588	614	605	549	532	427	411	397	367	349	342	305	14,192	30-39
5	50-59	1,894	1,763	1,665	1,580	1,491	1,451	1,374	1,296	1,127	1,020	836	704	727	625	624	495	414	437	388	349	341	331	302	21,234	50-59
1	19 years old or less	264	233	198	185	149	146	123	102	80	72	45	50	65	82	112	98	79	82	63	73	60	63	44	2,468	19 years old or less
	total	7,723	7,023	6,604	5,982	5,566	5,369	4,873	4,548	3,856	3,481	2,988	2,902	2,982	3,052	3,010	2,777	2,378	2,525	2,400	2,311	2,218	2,117	1,983	88,668	total

Transition of fatal and non-fatal accidents in workers scales in code no. 030202 wooden house construction work (1999-2021)

code	Workers scale	1999	2000	2001	2002	2003	2004	2005	2006	2007	2008	2009	2010	2011	2012	2013	2014	2015	2016	2017	2018	2019	2020	2021	total	Workers scale
1	9 workers or less	6,055	5,554	5,256	4,765	4,495	4,323	3,918	3,660	3,101	2,807	2,427	2,391	2,365	2,410	2,359	2,174	1,877	1,920	1,823	1,750	1,654	1,542	1,429	70,055	9 workers or less
2	10-29	1,357	1,192	1,093	978	894	814	756	717	621	531	439	413	472	510	502	483	402	476	426	420	417	441	430	14,784	10-29
3	30-49	196	174	148	151	113	131	95	94	87	81	79	60	92	69	91	65	61	72	90	95	88	75	66	2,273	30-49
4	50-99	81	65	73	58	45	65	78	58	35	41	30	31	34	45	34	32	23	30	38	30	38	39	34	1,037	50-99
5	100-299	29	33	30	28	17	32	25	16	11	20	11	6	18	12	17	18	10	23	21	15	18	19	16	445	100-299



40	Fukuoka	272	263	242		199		225	179	150	144	120	127	121	97	112	113	77	93	87	78	66	100	89	2,954	Fukuoka
2	Aomori	184	151	155		131		101	106	83	87	65	78	84	83	80	80	63	79	75	90	84	75	86	2,020	Aomori
5	Akita	132	126	101		123		97	139	93	78	82	75	87	78	66	91	78	71	77	89	70	63	77	1,893	Akita
4	Miyagi	157	157	121		149		118	100	94	76	74	94	182	200	131	108	79	120	86	54	80	59	67	2,306	Miyagi
23	Aichi	249	217	212		154		135	139	100	88	94	76	78	72	92	91	61	75	72	67	70	66	66	2,274	Aichi
3	Iwate	122	110	127		78		71	64	43	60	66	38	69	58	91	76	63	88	73	68	63	49	65	1,542	Iwate
22	Shizuoka	253	244	220		154		117	135	98	104	96	85	93	121	110	144	113	88	67	67	67	85	63	2,524	Shizuoka
28	Hyogo	351	375	305		271		226	209	174	136	129	80	106	86	93	79	59	77	68	64	67	75	57	3,087	Hyogo
8	Ibaraki	164	155	134		106		120	78	70	55	55	41	57	76	53	46	47	46	42	40	36	41	57	1,519	Ibaraki
7	Fukushima	163	139	146		125		109	107	100	85	70	62	82	97	67	89	90	66	61	46	61	61	54	1,880	Fukushima
13	Tokyo	292	296	284		263		215	211	167	145	145	157	128	137	123	126	97	105	94	85	102	78	52	3,302	Tokyo
11	Saitama	180	203	154		198		177	123	158	123	116	110	93	106	105	128	93	75	79	67	65	57	52	2,462	Saitama
12	Chiba	242	259	231		199		155	162	131	160	112	107	99	86	97	99	79	68	57	42	66	57	49	2,557	Chiba
6	Yamagata	147	139	120		96		112	91	68	75	56	70	55	80	89	53	41	47	39	70	48	42	49	1,587	Yamagata
34	Hiroshima	228	209	211		177		121	143	104	81	75	72	71	71	57	78	54	66	52	62	49	42	46	2,069	Hiroshima
43	Kumamoto	166	143	115		101		102	84	76	52	63	55	49	60	60	52	54	75	108	74	60	69	45	1,663	Kumamoto
24	Mie	222	213	208		148		109	98	120	76	80	80	94	49	76	62	58	69	83	71	34	34	42	2,026	Mie
20	Nagano	184	163	160		164		127	103	92	91	67	73	57	58	63	59	64	56	54	55	52	45	42	1,829	Nagano
10	Gunma	132	144	132		82		81	97	70	56	52	58	54	62	50	60	56	38	52	56	47	37	40	1,456	Gunma
26	Kyoto	186	201	190		153		126	138	101	104	80	89	72	80	92	73	57	57	45	57	33	42	38	2,014	Kyoto
17	Ishikawa	47	77	74		56		44	56	27	37	35	41	37	45	43	44	30	32	29	39	35	29	35	892	Ishikawa
29	Nara	156	127	142		80		90	70	58	61	44	57	53	44	42	50	39	33	38	39	41	35	34	1,333	Nara
16	Toyama	121	102	132		80		84	64	53	52	43	40	50	65	58	31	33	40	38	39	31	38	34	1,228	Toyama
27	Osaka	266	198	184		189		109	91	94	88	97	77	67	99	80	61	26	55	50	40	54	38	33	1,996	Osaka
33	Okayama	222	174	185		138		121	105	100	68	58	74	77	60	64	54	47	44	55	46	52	41	33	1,818	Okayama

35	Yamaguchi	85	103	112		68		77	68	60	47	37	34	33	25	26	16	24	35	40	28	28	25	32	1,003	Yamaguchi
21	Gifu	166	149	146		129		77	92	82	66	64	45	43	51	47	39	30	36	36	36	37	28	27	1,426	Gifu
9	Tochigi	88	78	64		55		51	48	36	46	39	44	58	49	57	31	34	36	23	26	20	27	27	937	Tochigi
38	Ehime	133	92	88		68		64	62	46	31	32	33	21	33	33	21	24	22	20	30	25	28	26	932	Ehime
45	Miyazaki	67	54	56		33		40	43	33	20	21	29	23	30	22	25	21	32	37	32	26	31	26	701	Miyazaki
41	Saga	89	53	72		65		60	53	47	52	43	35	37	37	46	38	38	39	33	39	31	41	23	971	Saga
37	Kagawa	84	70	78		42		79	56	36	32	23	27	20	20	18	18	13	19	13	26	22	8	23	727	Kagawa
42	Nagasaki	98	65	79		74		42	49	50	44	34	29	39	30	28	35	36	28	33	33	39	36	22	923	Nagasaki
25	Shiga	95	60	57		65		37	46	53	48	26	20	32	31	29	37	25	29	18	20	20	20	20	788	Shiga
44	Oita	98	86	61		83		45	60	59	41	33	27	41	26	38	31	21	36	25	24	27	22	19	903	Oita
46	Kagoshima	101	99	54		54		47	48	38	55	26	19	28	35	43	31	39	38	43	32	31	25	17	903	Kagoshima
36	Tokushima	64	90	77		51		40	34	38	34	32	19	29	19	21	11	25	23	26	13	16	12	16	690	Tokushima
30	Wakayama	111	78	96		67		51	62	46	37	33	37	30	37	39	20	30	27	22	23	23	19	15	903	Wakayama
39	Kochi	104	79	78		69		69	41	47	45	29	26	24	27	26	22	26	23	31	20	30	23	15	854	Kochi
32	Shimane	107	67	81		79		73	69	45	41	24	24	26	17	30	22	25	18	17	16	23	28	15	847	Shimane
31	Tottori	46	60	56		36		35	26	29	24	9	15	15	20	19	12	11	13	26	22	10	14	13	511	Tottori
18	Fukui	63	60	50		62		38	53	36	32	30	29	23	33	25	19	15	14	9	22	15	19	12	659	Fukui
19	Yamanashi	59	63	48		38		26	41	29	27	13	28	19	18	22	15	17	13	12	13	17	8	9	535	Yamanashi
47	Okinawa	1	4			1		1	2	1		2	1	1	2	1	1		1	1	3	1	4	3	31	Okinawa
	total	7,723	7,023	6,604		5,566		4,873	4,548	3,856	3,481	2,988	2,902	2,982	3,052	3,010	2,777	2,378	2,525	2,400	2,311	2,218	2,117	1,983	77,317	total

Data source : <https://anzeninfo.mhlw.go.jp/user/anzen/tok/anst00.htm>

Return to [https://www.jisha.or.jp/english/statistics/202211\\_23.html](https://www.jisha.or.jp/english/statistics/202211_23.html)