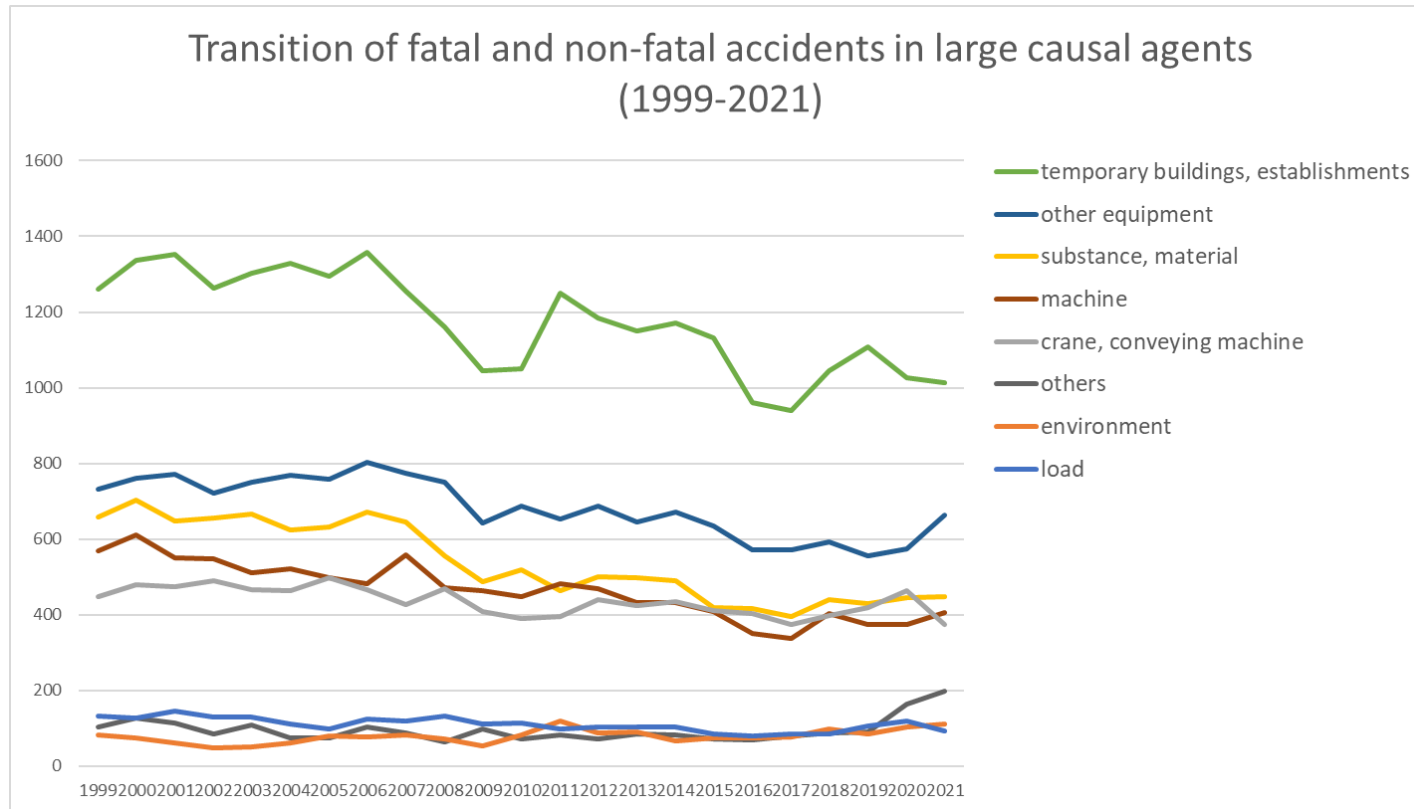
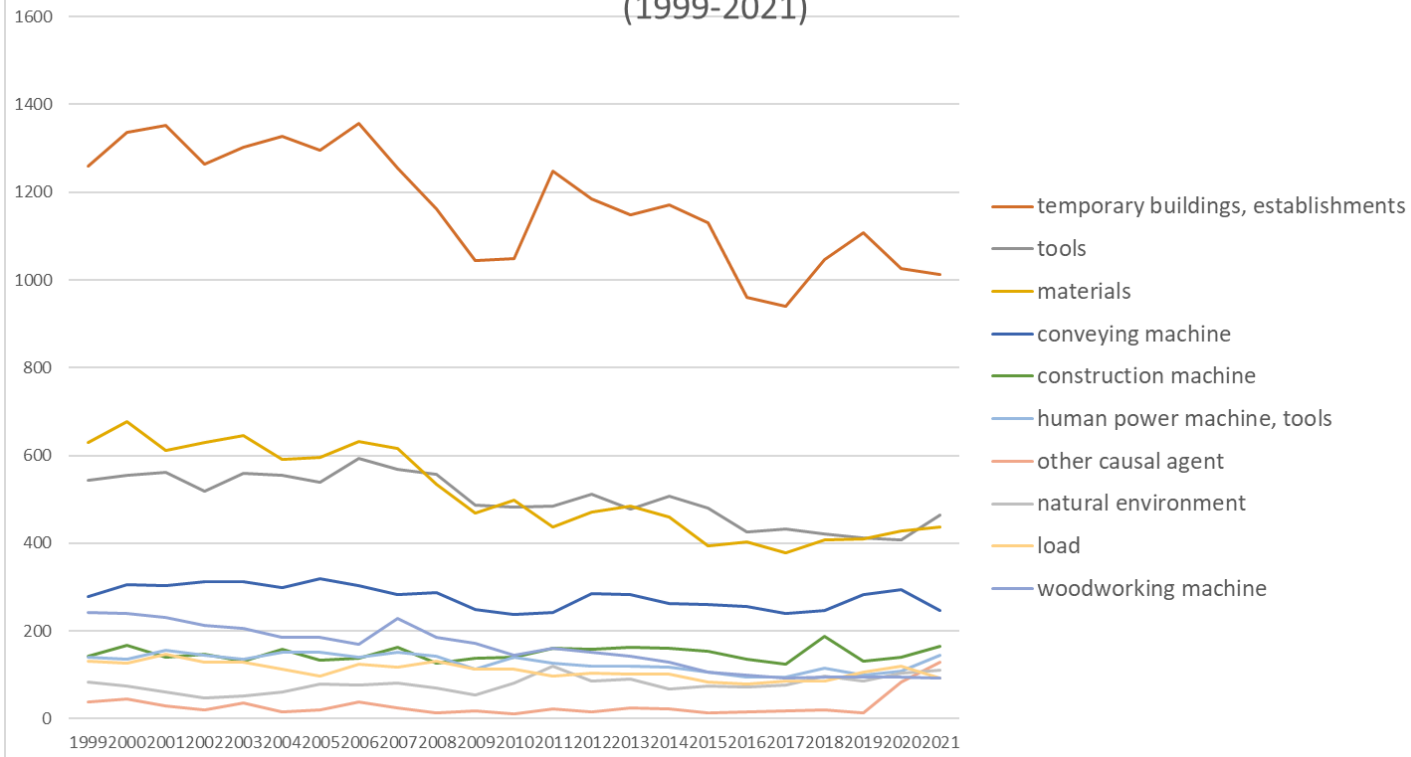


Transition of fatal and non-fatal accidents in each element like as causal agents, type of accidents, etc. in code no. 030209 other building construction work (1999-2021)



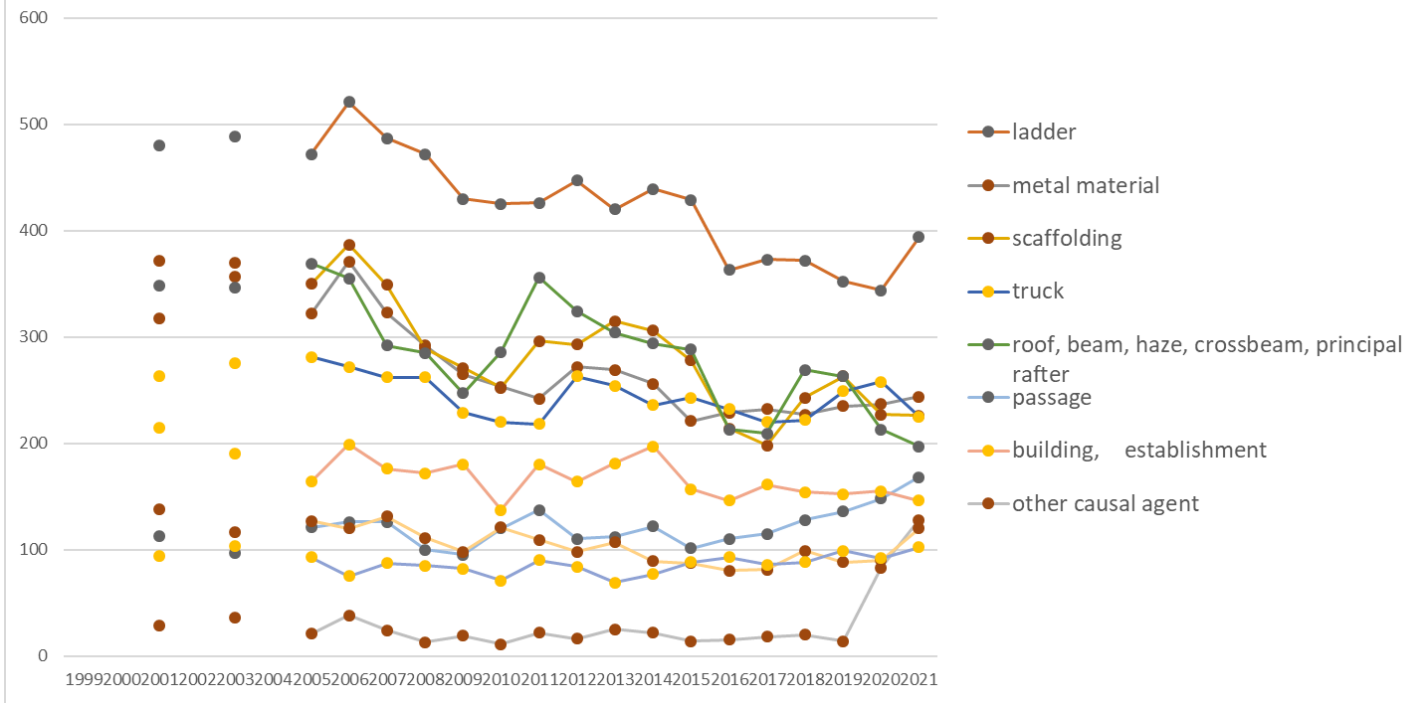
Transition of fatal and non-fatal accidents in large causal agents in code no. 030209 other building construction work (1999-2021)

Transition of fatal and non-fatal accidents in top 10 middle causal agents (1999-2021)



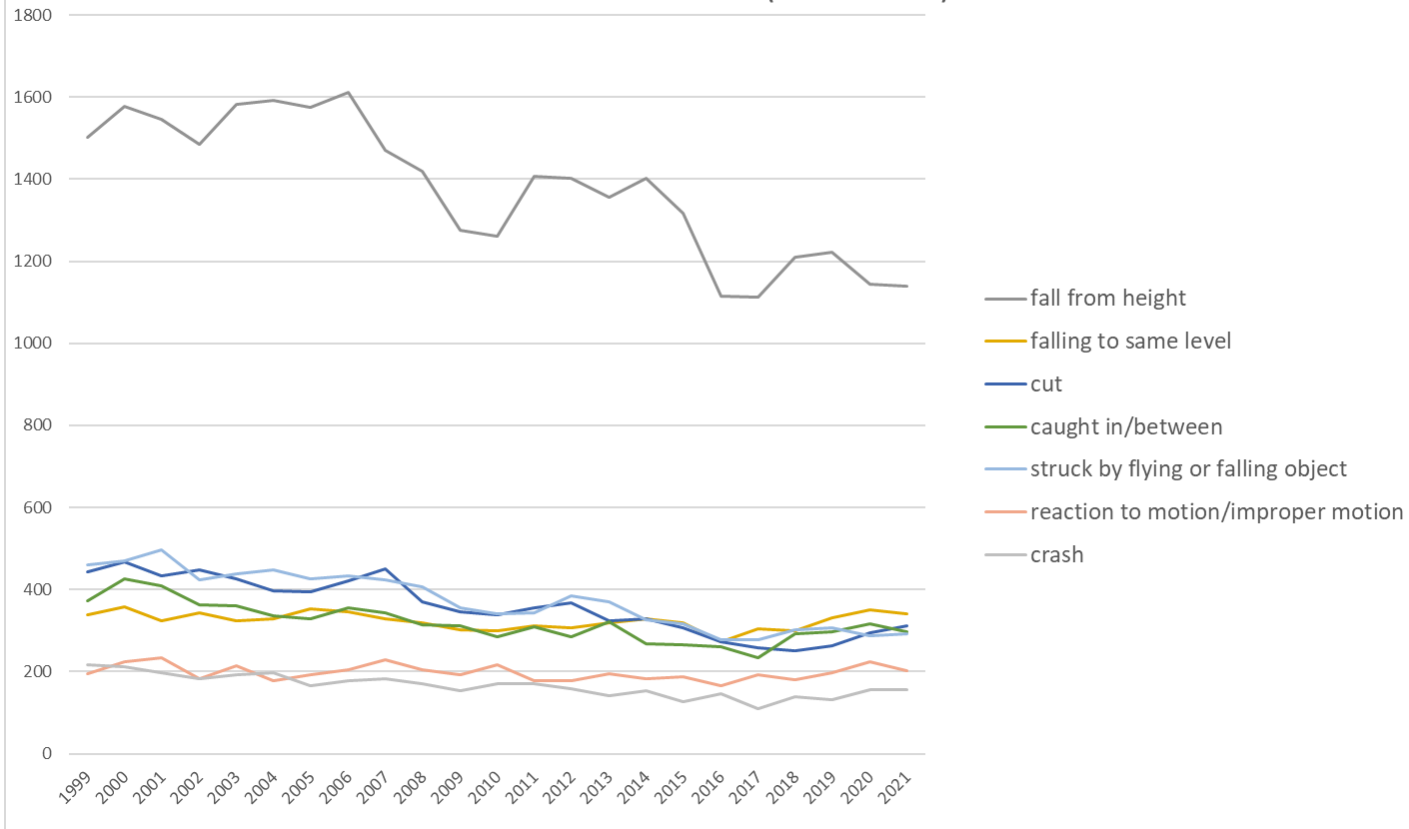
Transition of fatal and non-fatal accidents in middle causal agents in code no. 030209 other building construction work (1999-2021)

Transition of fatal and non-fatal accidents in top 10 small causal agents (1999-2021)



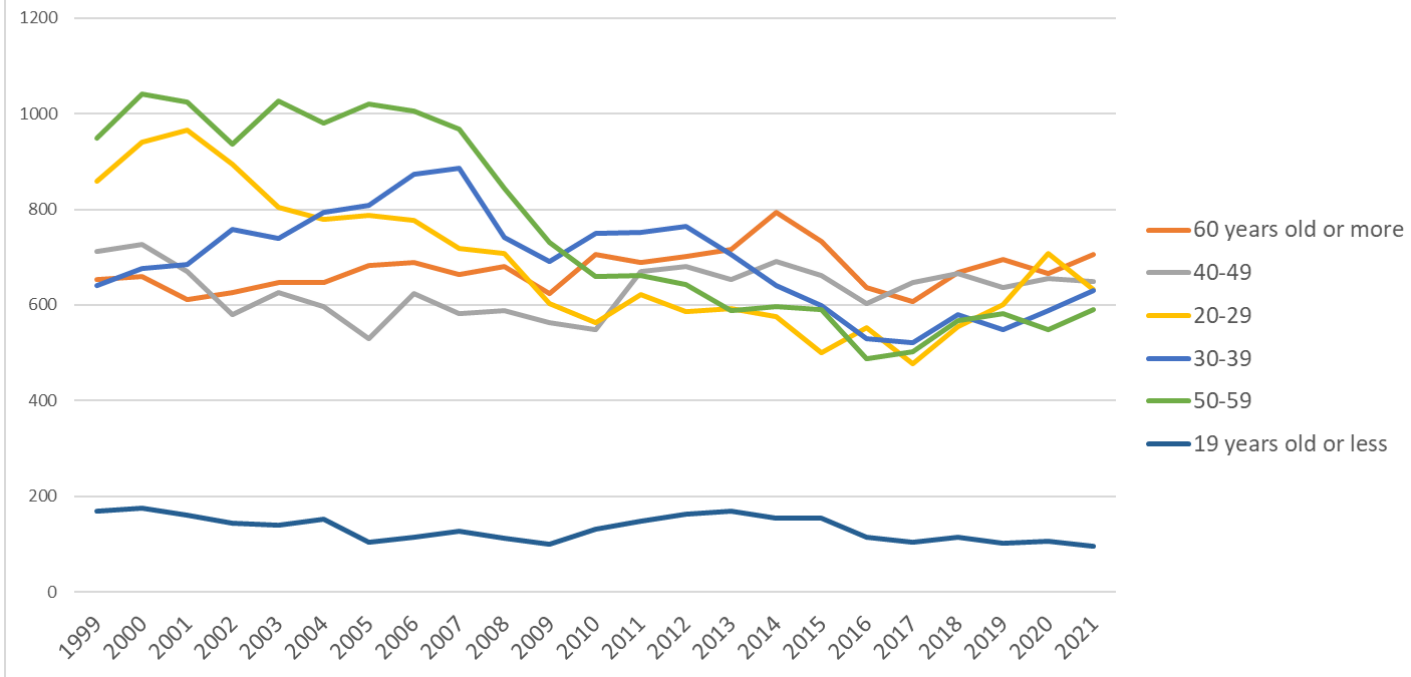
Transition of fatal and non-fatal accidents in small causal agents in code no. 030209 other building construction work (1999-2021)

Transition of fatal and non-fatal accidents in top 7 type of accidents
(1999-2021)



Transition of fatal and non-fatal accidents in type of accidents in code no. 030209 other building construction work (1999-2021)

Transition of fatal and non-fatal accidents in workers ages (1999-2021)



Transition of fatal and non-fatal accidents in workers ages in code no. 030209 other building construction work (1999-2021)

6	more	2	6	2	3	5	4	6	5	6	6	5	9	5	5	4	4	7	4	2	6	7	29	24	156	more
	total	3,983	4,220	4,117	3,941	3,983	3,951	3,933	4,084	3,944	3,675	3,311	3,358	3,543	3,540	3,427	3,452	3,237	2,923	2,859	3,152	3,166	3,270	3,304	82,373	total

Transition of fatal and non-fatal accidents in months in code no. 030209 other building construction work (1999-2021)

code	Month	1999	2000	2001	2002	2003	2004	2005	2006	2007	2008	2009	2010	2011	2012	2013	2014	2015	2016	2017	2018	2019	2020	2021	total	Month
9	September	359	337	367	295	386	391	358	389	351	314	303	294	283	323	283	318	296	237	244	253	287	304	327	7,299	September
8	August	367	404	311	326	343	303	356	373	371	322	300	319	314	327	313	289	258	237	259	265	286	276	326	7,245	August
7	July	363	395	416	384	346	392	330	344	324	378	281	295	327	313	308	284	317	264	271	318	311	329	310	7,600	July
3	March	336	377	368	342	369	329	330	350	371	328	281	251	363	297	280	305	277	252	265	280	276	290	296	7,213	March
6	June	361	358	363	328	321	372	352	361	365	309	280	303	303	320	294	258	294	253	270	282	248	317	291	7,203	June
11	November	333	345	350	372	333	354	318	361	349	287	293	300	296	299	307	288	260	271	239	251	261	241	278	6,986	November
10	October	386	398	388	334	400	346	345	349	348	306	332	298	299	332	322	323	287	218	218	280	288	267	267	7,331	October
4	April	310	328	318	366	290	310	361	323	321	348	259	285	287	269	277	340	277	270	223	284	258	285	260	6,849	April
2	February	292	328	344	286	308	281	298	288	308	293	255	266	270	288	233	271	251	263	228	219	251	256	257	6,334	February
1	January	288	254	271	264	277	281	261	287	229	262	218	240	263	218	243	223	246	215	217	235	238	218	250	5,698	January
5	May	317	359	336	351	303	287	334	351	342	311	252	261	259	306	322	294	258	230	218	248	245	230	239	6,653	May
12	December	271	337	285	293	307	305	290	308	265	217	257	246	279	248	245	259	216	213	207	237	217	257	203	5,962	December
	total	3,983	4,220	4,117	3,941	3,983	3,951	3,933	4,084	3,944	3,675	3,311	3,358	3,543	3,540	3,427	3,452	3,237	2,923	2,859	3,152	3,166	3,270	3,304	82,373	total

Transition of fatal and non-fatal accidents in prefectures in code no. 030209 other building construction work (1999-2021)

code	Prefecture	1999	2000	2001	2002	2003	2004	2005	2006	2007	2008	2009	2010	2011	2012	2013	2014	2015	2016	2017	2018	2019	2020	2021	total	Prefecture
13	Tokyo	349	322	337		345		336	385	449	472	418	381	368	319	344	360	308	285	327	304	294	315	261	7,279	Tokyo
1	Hokkaido	349	333	317		243		298	319	282	296	265	273	242	311	290	291	277	205	197	232	243	187	233	5,683	Hokkaido
27	Osaka	368	486	531		423		423	437	395	289	257	241	240	269	186	193	220	183	180	221	260	205	222	6,229	Osaka
14	Kanagawa	192	224	203		254		226	225	232	225	196	226	225	265	225	218	202	183	177	174	212	223	211	4,518	Kanagawa

40	Fukuoka	171	134	141		122		153	183	161	134	126	118	112	137	139	143	115	129	132	149	121	139	153	2,912	Fukuoka
11	Saitama	135	198	184		190		177	199	232	176	180	189	198	158	164	177	164	147	143	142	133	145	146	3,577	Saitama
12	Chiba	133	125	110		110		111	115	110	114	147	142	118	132	132	149	154	128	128	130	190	223	128	2,829	Chiba
23	Aichi	142	158	211		153		135	131	122	119	112	112	134	97	135	108	102	109	106	125	109	140	121	2,681	Aichi
15	Niigata	86	86	109		107		102	154	89	90	78	104	99	97	110	87	99	83	72	91	88	110	105	2,046	Niigata
7	Fukushima	47	54	64		72		59	52	39	57	61	45	101	84	106	97	55	61	46	60	50	83	89	1,382	Fukushima
8	Ibaraki	82	92	72		56		67	67	62	81	60	64	137	95	80	87	67	69	84	68	71	64	85	1,610	Ibaraki
28	Hyogo	202	176	144		126		139	118	132	94	90	126	112	125	116	154	121	96	81	98	78	71	82	2,481	Hyogo
6	Yamagata	59	52	49		45		61	43	44	39	29	33	45	59	42	55	56	33	36	54	41	35	81	991	Yamagata
42	Nagasaki	30	64	50		40		49	63	61	35	41	36	45	56	35	36	37	49	36	39	42	60	78	982	Nagasaki
22	Shizuoka	120	122	115		138		138	156	152	178	144	136	120	120	118	53	58	75	81	87	94	80	77	2,362	Shizuoka
46	Kagoshima	43	39	46		46		71	63	45	32	33	56	61	54	60	51	64	60	52	81	71	91	71	1,190	Kagoshima
20	Nagano	80	78	93		72		73	66	73	57	49	55	57	67	58	54	65	56	56	69	55	62	69	1,364	Nagano
24	Mie	52	53	60		64		63	90	71	83	76	70	71	70	61	57	50	32	24	48	70	65	66	1,296	Mie
21	Gifu	67	75	65		82		74	68	76	71	46	57	57	32	66	59	57	51	43	64	55	57	62	1,284	Gifu
9	Tochigi	70	87	57		73		55	58	62	68	67	72	52	55	40	48	57	59	59	54	36	56	57	1,242	Tochigi
44	Oita	78	75	97		79		83	84	56	55	42	37	44	34	39	64	51	42	33	42	46	56	57	1,194	Oita
26	Kyoto	81	92	74		82		59	58	73	64	30	41	55	54	60	63	68	42	59	44	49	55	55	1,258	Kyoto
10	Gunma	107	86	68		83		72	61	67	58	45	48	50	61	60	56	30	34	41	55	38	47	55	1,222	Gunma
34	Hiroshima	60	85	89		81		74	59	65	68	57	38	61	55	64	57	59	60	61	65	79	63	51	1,351	Hiroshima
43	Kumamoto	32	25	31		49		46	62	38	53	52	49	51	39	49	41	54	60	61	57	29	48	49	975	Kumamoto
45	Miyazaki	59	43	46		71		49	35	51	50	40	30	28	31	32	38	21	35	33	27	36	39	45	839	Miyazaki
3	Iwate	58	53	28		45		68	66	67	41	41	47	71	52	49	34	48	25	32	32	29	32	43	961	Iwate
47	Okinawa	19	31	23		19		33	13	10	17	17	21	21	24	20	30	35	38	37	39	47	44	42	580	Okinawa
35	Yamaguchi	79	70	42		54		46	47	28	34	36	42	50	31	41	49	28	41	24	28	32	21	39	862	Yamaguchi

30	Wakayama	45	48	32		32		45	43	40	34	24	36	21	43	31	39	23	23	25	40	30	32	38	724	Wakayama
33	Okayama	42	75	67		58		58	55	68	56	54	51	37	42	38	55	61	48	36	28	31	47	34	1,041	Okayama
37	Kagawa	55	41	44		46		14	34	34	26	36	38	38	34	40	44	41	44	32	38	32	24	34	769	Kagawa
16	Toyama	30	51	32		34		55	53	46	43	29	35	28	29	20	24	33	26	38	37	36	22	34	735	Toyama
39	Kochi	29	41	44		40		33	28	23	18	24	23	30	20	28	20	38	24	24	31	28	20	33	599	Kochi
38	Ehime	62	55	54		75		61	47	48	59	42	42	59	60	48	40	32	41	37	38	23	30	32	985	Ehime
18	Fukui	47	42	24		21		22	29	37	23	18	34	31	21	10	18	21	18	23	38	35	26	31	569	Fukui
25	Shiga	26	39	57		26		27	52	24	24	27	33	37	32	29	32	29	18	25	17	15	36	29	634	Shiga
2	Aomori	16	6	22		11		11	7	13	6	10	9	12	12	10	13	6	9	10	8	14	7	26	238	Aomori
4	Miyagi	35	47	37		54		28	34	34	23	27	22	46	50	42	43	62	37	28	41	44	32	24	790	Miyagi
19	Yamanashi	23	26	21		22		33	22	31	24	14	16	19	38	29	39	37	23	20	24	29	26	24	540	Yamanashi
32	Shimane	19	21	25		29		16	21	31	13	20	18	31	29	25	29	15	26	23	21	14	19	24	469	Shimane
36	Tokushima	39	34	32		46		41	32	36	42	32	27	24	31	39	37	27	33	26	24	38	34	21	695	Tokushima
41	Saga	15	37	29		24		28	30	19	17	16	16	21	29	21	35	29	33	22	25	23	32	21	522	Saga
5	Akita	76	50	67		41		44	42	25	36	28	30	34	44	31	35	8	17	12	10	8	16	18	672	Akita
29	Nara	29	44	33		61		40	34	42	49	37	28	21	23	42	17	26	9	14	20	23	17	18	627	Nara
31	Tottori	14	22	20		15		19	21	16	8	8	6	21	14	11	7	11	12	8	22	35	21	16	327	Tottori
17	Ishikawa	31	23	21		24		18	23	33	24	30	5	8	6	12	16	16	12	15	11	10	13	14	365	Ishikawa
	total	3,983	4,220	4,117		3,983		3,933	4,084	3,944	3,675	3,311	3,358	3,543	3,540	3,427	3,452	3,237	2,923	2,859	3,152	3,166	3,270	3,304	74,481	total

Data source : <https://anzeninfo.mhlw.go.jp/user/anzen/tok/anst00.htm>

Return to https://www.jisha.or.jp/english/statistics/202211_23.html