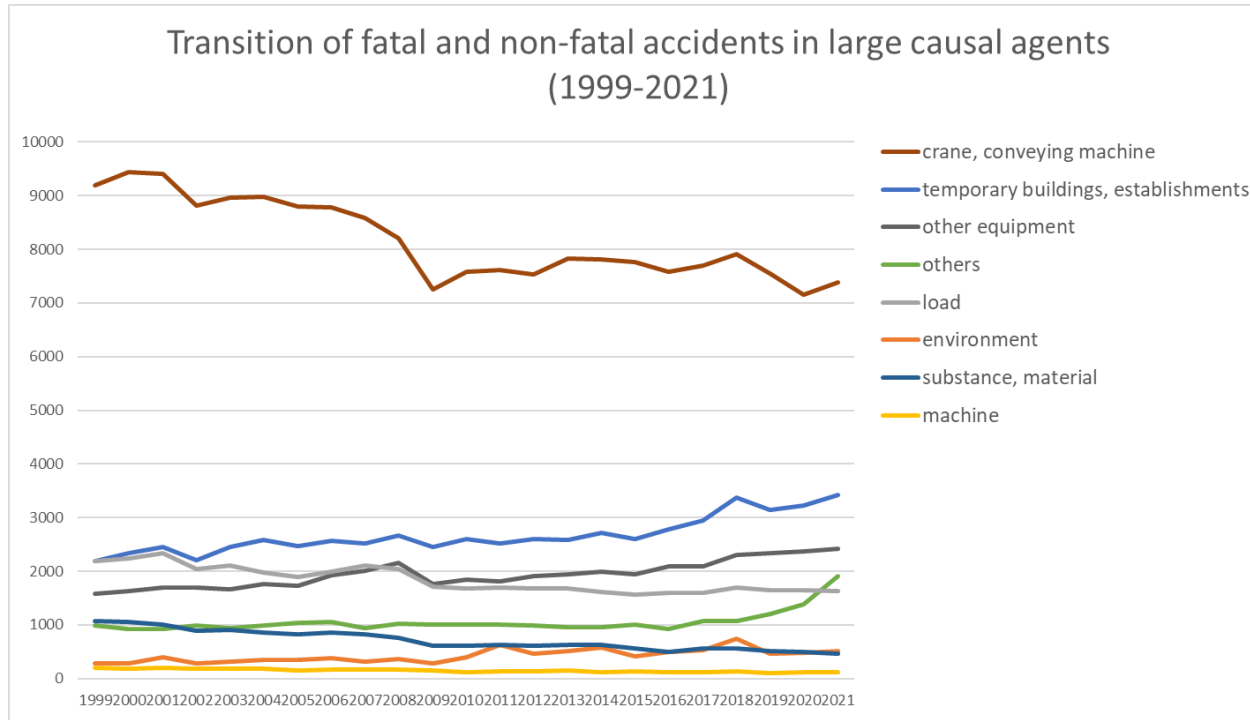
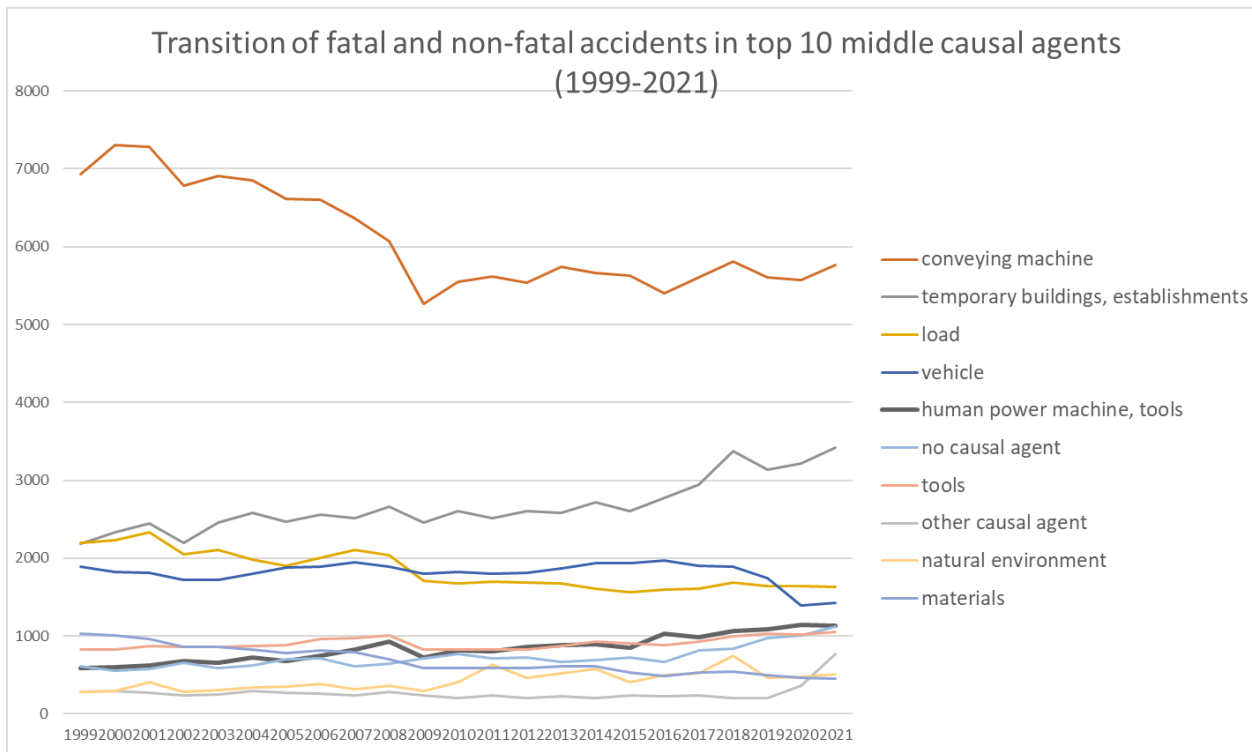


Transition of fatal and non-fatal accidents in each element like as causal agents, type of accidents, etc. in code no. 04 transportation service (1999-2021)

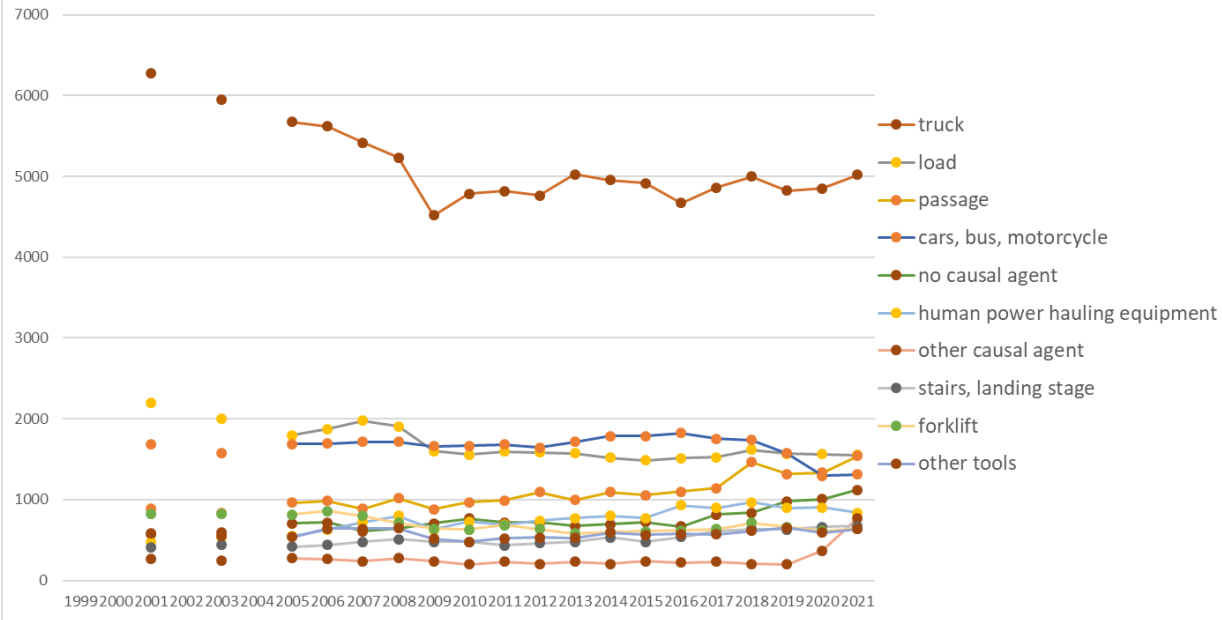


Transition of fatal and non-fatal accidents in large causal agents in code no. 04 transportation service (1999-2021)



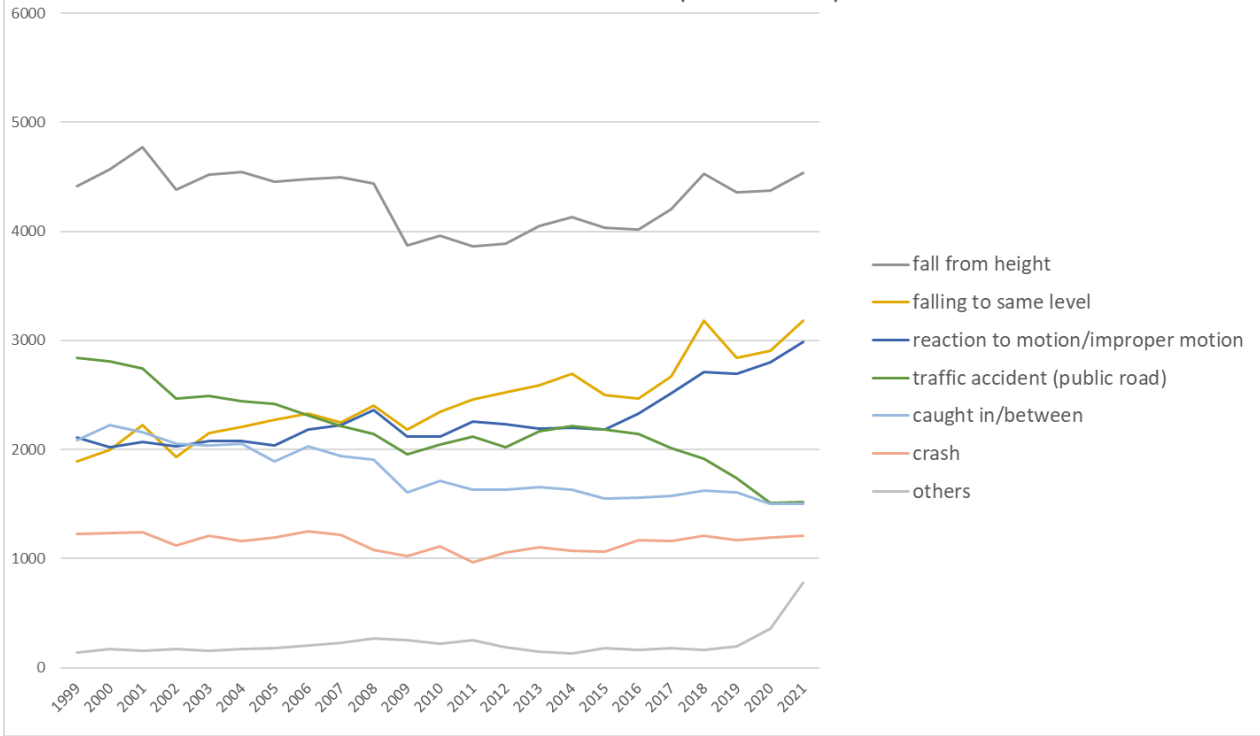
Transition of fatal and non-fatal accidents in middle causal agents in code no. 04 transportation service (1999-2021)

Transition of fatal and non-fatal accidents in top 10 small causal agents
(1999-2021)



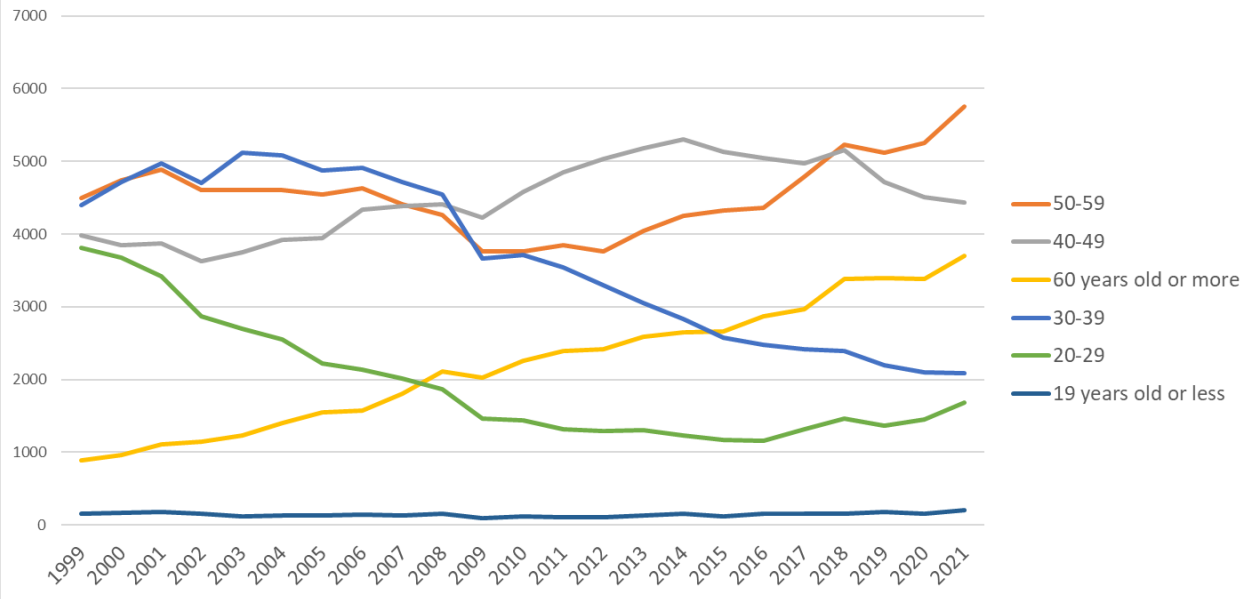
Transition of fatal and non-fatal accidents in small causal agents in code no. 04 transportation service (1999-2021)

Transition of fatal and non-fatal accidents in top 7 type of accidents
(1999-2021)



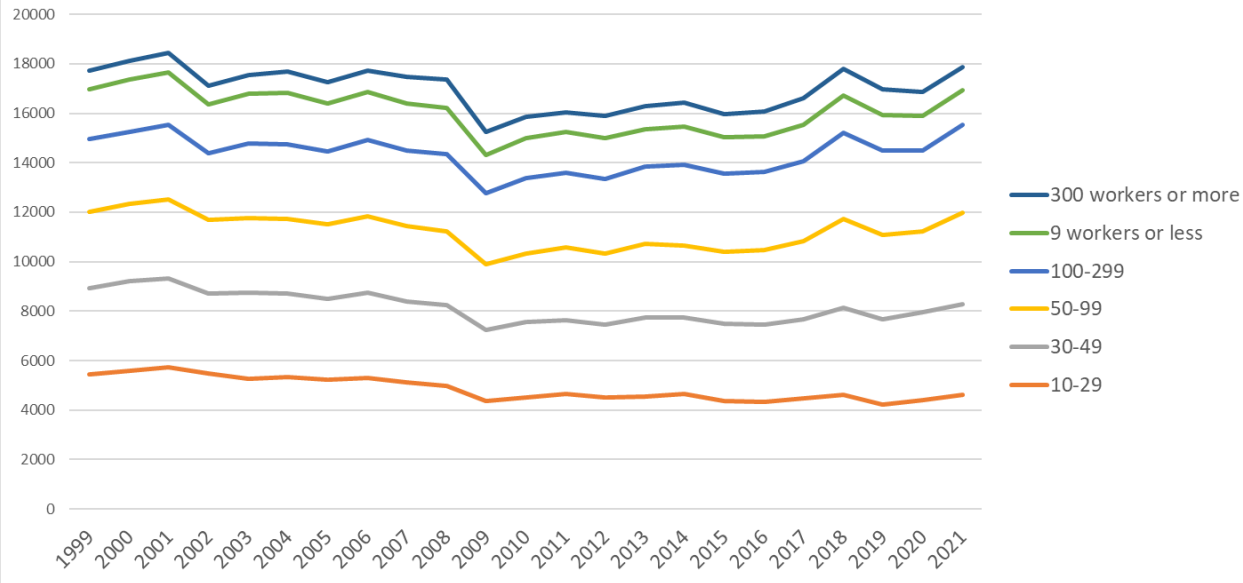
Transition of fatal and non-fatal accidents in type of accidents in code no. 04 transportation service (1999-2021)

Transition of fatal and non-fatal accidents in workers ages (1999-2021)



Transition of fatal and non-fatal accidents in workers ages in code no. 04 transportation service (1999-2021)

Transition of fatal and non-fatal accidents in workers scales (1999-2021)



Transition of fatal and non-fatal accidents in workers scales in code no. 04 transportation service (1999-2021)

166	printing machine			2					2	2	1										1	1	1	10	printing machine
133	wood planer machine										2		1	1							1		1	6	wood planer machine
171	felling machine																1	1	1	2		1	6	felling machine	
339	other welding equipment			1						1			1					1			1	1	6	other welding equipment	
217	lumberyard equipment, logging cableway			1									1							1		1	5	lumberyard equipment, logging cableway	
172	mobile logging machine														1		1	1				1	4	mobile logging machine	
167	industrial robot											1				1						1	3	industrial robot	
513	inflammable gas			3		3		3	5	2	2	3	1	6	3	2	1	2	1	3	3	3	3	49	inflammable gas
144	hardening machine			9		8		3	4	2	1	1	2	2	2	1	2	2	1		1		41	hardening machine	
511	explosive substance			1		1		1	4	1	2	1	2	1	1	2		2			2	1	22	explosive substance	
165	food manufacturing machine			2				1		2	3	1			2	1	1			2	2		1	18	food manufacturing machine
332	arc welding equipment			1						3	1	1		1	1		2	1			2	1	14	arc welding equipment	
151	lathe			1		2		1	1		2	1	1	2									11	lathe	
143	foundation work machine			1		2		1		1	1		2								1	1	10	foundation work machine	
215	cargo lifting appliance									1				2		1		1	1			2	2	10	cargo lifting appliance
412	timbering					2		1	1	1			1							2			9	timbering	
132	band sawing machine								2	1	1				1	1	1						7	band sawing machine	
134	hollow chisel mortiser, wood borer					1						1								1		1	5	hollow chisel mortiser, wood borer	

17	traffic accident (public road)	2,842	2,807	2,744	2,467	2,491	2,439	2,420	2,314	2,214	2,140	1,953	2,043	2,120	2,020	2,166	2,217	2,183	2,139	2,012	1,917	1,741	1,507	1,515	50,411	traffic accident (public road)
07	caught in/between	2,089	2,223	2,160	2,057	2,038	2,057	1,888	2,027	1,944	1,908	1,611	1,712	1,635	1,631	1,656	1,634	1,550	1,556	1,577	1,620	1,605	1,501	1,502	41,181	caught in/between
03	crash	1,225	1,234	1,239	1,121	1,214	1,160	1,193	1,254	1,221	1,084	1,023	1,114	966	1,059	1,102	1,076	1,062	1,166	1,163	1,213	1,171	1,190	1,208	26,458	crash
90	others	138	172	152	174	157	170	182	203	225	273	255	218	251	189	151	132	181	165	183	160	193	361	782	5,067	others
06	crashed by	825	832	804	848	766	863	834	904	930	869	645	717	726	741	716	784	775	753	780	764	845	745	755	18,221	crashed by
04	struck by flying or falling object	1,170	1,108	1,170	1,046	995	1,052	951	1,020	889	876	761	718	778	766	756	749	701	730	692	721	649	640	642	19,580	struck by flying or falling object
05	collapse	531	572	548	497	556	547	486	504	523	506	437	467	419	443	448	384	403	374	388	426	440	386	398	10,683	collapse
08	cut	224	256	263	209	236	206	214	211	199	209	197	191	185	167	210	178	147	172	158	175	162	157	160	4,486	cut
11	contact to high/low-temperature	75	102	100	97	85	99	95	81	99	97	63	129	123	114	120	99	115	100	139	235	163	181	108	2,619	contact to high/low-temperature
99	unclassifiable	82	82	86	117	118	108	75	82	79	76	53	43	46	69	62	56	46	59	44	42	28	25	24	1,502	unclassifiable
12	contact to harmful substance	19	36	25	30	27	25	28	25	21	33	23	22	27	20	35	24	28	21	35	32	20	34	20	610	contact to harmful substance
09	injury to the sole of the foot	20	33	32	17	26	31	23	30	32	19	15	14	23	19	22	24	25	21	21	26	22	23	17	535	injury to the sole of the foot
18	traffic accident (others)	28	28	29	65	50	76	78	63	101	48	24	29	15	18	16	20	25	11	19	18	21	16	12	810	traffic accident (others)
15	burst	9	12	17	7	11	14	13	9	12	7	6	6	5	6	4	10	3	6	4	2	7	6	5	181	burst
13	electric shock	5	10	4	7	6	1	7	4	6	5	4	4	4	2	5	5	4	4	1	3	1	4	5	101	electric shock
14	explosion	6	7	2	4	7	5	4	5	5	6	2	4	4		2	1	3		6	2	6	2	5	88	explosion
16	fire	4	11	5	3	4	6	4	5	5	2	3	2	3	2	2	5	5		1	3	1	2	3	81	fire
10	drown	3	1		2	2	1	2	2		1	1	1	140	2	2	1	4	1	2	2	3		1	174	drown
	total	17,711	18,120	18,439	17,108	17,540	17,689	17,259	17,740	17,464	17,354	15,253	15,861	16,048	15,908	16,303	16,421	15,976	16,087	16,622	17,783	16,968	16,859	17,867	390,380	total

Transition of fatal and non-fatal accidents in workers ages in code no. 04 transportation service (1999-2021)

code	Age	1999	2000	2001	2002	2003	2004	2005	2006	2007	2008	2009	2010	2011	2012	2013	2014	2015	2016	2017	2018	2019	2020	2021	total	Age
5	50-59	4,496	4,740	4,881	4,600	4,610	4,600	4,539	4,626	4,407	4,268	3,758	3,759	3,844	3,762	4,047	4,257	4,326	4,366	4,791	5,231	5,117	5,254	5,759	104,038	50-59
4	40-49	3,978	3,852	3,875	3,630	3,755	3,925	3,942	4,338	4,391	4,410	4,232	4,577	4,845	5,029	5,179	5,303	5,128	5,051	4,969	5,154	4,717	4,505	4,429	103,214	40-49
6	60 years old or more	884	962	1,109	1,149	1,237	1,407	1,544	1,578	1,805	2,108	2,032	2,257	2,395	2,416	2,587	2,647	2,659	2,869	2,970	3,387	3,393	3,383	3,705	50,483	60 years old or more
3	30-39	4,392	4,717	4,975	4,703	5,117	5,079	4,876	4,912	4,711	4,547	3,666	3,710	3,537	3,293	3,056	2,832	2,571	2,484	2,413	2,398	2,196	2,103	2,089	84,377	30-39
2	20-29	3,811	3,680	3,417	2,872	2,699	2,546	2,224	2,137	2,014	1,866	1,467	1,441	1,319	1,296	1,300	1,232	1,170	1,163	1,320	1,462	1,370	1,457	1,684	44,947	20-29
1	19 years old or less	150	169	182	154	122	132	134	149	136	155	98	117	108	112	134	150	122	154	159	151	175	157	201	3,321	19 years old or less
	total	17,711	18,120	18,439	17,108	17,540	17,689	17,259	17,740	17,464	17,354	15,253	15,861	16,048	15,908	16,303	16,421	15,976	16,087	16,622	17,783	16,968	16,859	17,867	390,380	total

Transition of fatal and non-fatal accidents in workers scales in code no. 04 transportation service (1999-2021)

code	Workers scale	1999	2000	2001	2002	2003	2004	2005	2006	2007	2008	2009	2010	2011	2012	2013	2014	2015	2016	2017	2018	2019	2020	2021	total	Workers scale
2	10-29	5,447	5,600	5,731	5,496	5,279	5,327	5,217	5,305	5,121	4,975	4,373	4,512	4,672	4,512	4,559	4,672	4,363	4,331	4,467	4,626	4,230	4,415	4,602	111,832	10-29
3	30-49	3,464	3,619	3,597	3,216	3,460	3,400	3,264	3,449	3,279	3,284	2,884	3,045	2,976	2,930	3,190	3,066	3,138	3,123	3,211	3,520	3,430	3,548	3,692	75,785	30-49
4	50-99	3,106	3,114	3,194	2,977	3,028	2,991	3,044	3,076	3,037	2,976	2,624	2,784	2,921	2,881	2,988	2,917	2,911	3,020	3,146	3,582	3,412	3,273	3,687	70,689	50-99
5	100-299	2,932	2,914	3,018	2,692	3,000	3,022	2,915	3,078	3,058	3,101	2,897	3,049	3,044	3,037	3,111	3,275	3,164	3,174	3,233	3,482	3,418	3,257	3,566	71,437	100-299
1	9 workers or less	2,004	2,130	2,130	1,963	2,037	2,070	1,946	1,972	1,888	1,891	1,534	1,596	1,632	1,645	1,492	1,538	1,446	1,430	1,495	1,494	1,454	1,388	1,398	39,573	9 workers or less
6	300 workers or more	758	743	769	764	736	879	873	860	1,081	1,127	941	875	803	903	963	953	954	1,009	1,070	1,079	1,024	978	922	21,064	300 workers or more
	total	17,711	18,120	18,439	17,108	17,540	17,689	17,259	17,740	17,464	17,354	15,253	15,861	16,048	15,908	16,303	16,421	15,976	16,087	16,622	17,783	16,968	16,859	17,867	390,380	total

Transition of fatal and non-fatal accidents in months in code no. 04 transportation service (1999-2021)

code	Month	1999	2000	2001	2002	2003	2004	2005	2006	2007	2008	2009	2010	2011	2012	2013	2014	2015	2016	2017	2018	2019	2020	2021	total	Month
12	December	1,523	1,480	1,485	1,561	1,458	1,417	1,694	1,417	1,473	1,406	1,303	1,393	1,395	1,349	1,406	1,463	1,275	1,389	1,491	1,477	1,425	1,544	1,650	33,474	December
1	January	1,405	1,383	1,696	1,466	1,496	1,474	1,375	1,583	1,283	1,427	1,348	1,377	1,456	1,399	1,454	1,438	1,392	1,458	1,456	1,742	1,364	1,374	1,623	33,469	January
8	August	1,450	1,530	1,450	1,352	1,345	1,478	1,351	1,392	1,491	1,416	1,182	1,314	1,330	1,323	1,313	1,272	1,301	1,265	1,389	1,443	1,476	1,397	1,614	31,874	August

3	March	1,585	1,674	1,775	1,476	1,602	1,665	1,668	1,659	1,651	1,593	1,421	1,493	1,536	1,424	1,425	1,558	1,429	1,434	1,466	1,578	1,487	1,500	1,596	35,695	March
7	July	1,577	1,508	1,525	1,568	1,533	1,518	1,540	1,516	1,433	1,633	1,374	1,417	1,396	1,323	1,456	1,457	1,495	1,394	1,392	1,617	1,595	1,460	1,514	34,241	July
2	February	1,530	1,559	1,641	1,315	1,447	1,535	1,416	1,562	1,422	1,563	1,299	1,337	1,247	1,499	1,357	1,663	1,303	1,267	1,394	1,528	1,365	1,463	1,512	33,224	February
9	September	1,537	1,595	1,484	1,331	1,489	1,414	1,370	1,398	1,418	1,365	1,177	1,263	1,344	1,273	1,352	1,267	1,345	1,329	1,328	1,542	1,347	1,356	1,444	31,768	September
4	April	1,475	1,512	1,517	1,350	1,457	1,424	1,405	1,435	1,485	1,455	1,313	1,271	1,298	1,283	1,320	1,222	1,316	1,411	1,310	1,377	1,453	1,301	1,403	31,793	April
11	November	1,390	1,518	1,427	1,455	1,393	1,418	1,316	1,430	1,395	1,286	1,198	1,230	1,239	1,295	1,279	1,244	1,298	1,280	1,352	1,363	1,367	1,284	1,386	30,843	November
10	October	1,458	1,469	1,498	1,463	1,501	1,543	1,390	1,479	1,492	1,421	1,281	1,324	1,268	1,284	1,462	1,342	1,295	1,361	1,500	1,456	1,425	1,527	1,382	32,621	October
6	June	1,470	1,501	1,528	1,402	1,415	1,537	1,457	1,474	1,478	1,374	1,226	1,308	1,347	1,271	1,239	1,306	1,332	1,289	1,317	1,411	1,303	1,483	1,382	31,850	June
5	May	1,311	1,391	1,413	1,369	1,404	1,266	1,277	1,395	1,443	1,415	1,131	1,134	1,192	1,185	1,240	1,189	1,195	1,210	1,227	1,249	1,361	1,170	1,361	29,528	May
	total	17,711	18,120	18,439	17,108	17,540	17,689	17,259	17,740	17,464	17,354	15,253	15,861	16,048	15,908	16,303	16,421	15,976	16,087	16,622	17,783	16,968	16,859	17,867	390,380	total

Transition of fatal and non-fatal accidents in prefectures in code no. 04 transportation service (1999-2021)

code	Prefecture	1999	2000	2001	2002	2003	2004	2005	2006	2007	2008	2009	2010	2011	2012	2013	2014	2015	2016	2017	2018	2019	2020	2021	total	Prefecture
13	Tokyo	1,632	1,573	1,703		1,603		1,572	1,638	1,578	1,746	1,609	1,592	1,573	1,609	1,674	1,640	1,630	1,726	1,705	1,797	1,706	1,503	1,602	34,411	Tokyo
27	Osaka	1,727	1,667	1,735		1,644		1,518	1,618	1,552	1,525	1,318	1,381	1,337	1,330	1,327	1,283	1,329	1,272	1,310	1,505	1,432	1,381	1,522	30,713	Osaka
11	Saitama	775	779	910		899		921	1,001	1,012	993	909	933	930	967	948	974	1,024	1,012	1,009	1,091	1,113	1,148	1,222	20,570	Saitama
14	Kanagawa	984	1,037	1,011		915		982	1,011	1,109	1,143	963	1,045	998	1,048	1,022	1,088	1,060	1,032	1,082	1,125	1,070	1,064	1,091	21,880	Kanagawa
1	Hokkaido	1,186	1,285	1,278		1,175		1,152	1,221	1,061	1,004	962	956	981	993	1,060	1,069	945	996	1,050	1,045	964	989	1,045	22,417	Hokkaido
23	Aichi	1,093	1,149	1,134		1,110		1,003	1,085	1,057	970	856	893	907	926	978	913	952	869	978	1,035	1,049	1,042	1,018	21,017	Aichi
40	Fukuoka	868	817	863		926		787	834	814	833	738	801	753	733	726	769	721	768	804	839	822	834	922	16,972	Fukuoka
12	Chiba	662	780	879		750		838	775	828	841	755	759	760	764	752	823	785	808	787	834	838	910	875	16,803	Chiba
28	Hyogo	762	777	720		659		669	706	715	745	573	563	619	643	646	621	672	598	669	715	657	653	647	14,029	Hyogo
22	Shizuoka	566	636	569		576		524	564	589	586	466	567	519	527	497	544	505	557	549	551	532	583	543	11,550	Shizuoka
34	Hiroshima	556	490	498		521		461	514	495	467	428	429	432	402	470	386	421	370	425	420	430	427	494	9,536	Hiroshima
4	Miyagi	371	365	360		364		364	385	317	338	314	313	456	350	333	382	326	353	378	377	386	338	431	7,601	Miyagi
8	Ibaraki	398	445	457		408		406	427	402	393	340	389	445	379	427	398	389	369	398	400	357	396	417	8,440	Ibaraki
26	Kyoto	425	415	387		387		422	396	372	324	316	316	373	303	360	388	413	401	404	418	357	363	391	7,931	Kyoto
33	Okayama	289	308	323		288		286	276	330	328	254	241	290	311	312	298	299	286	317	358	326	303	359	6,382	Okayama

15	Niigata	291	304	302		253		264	282	248	258	241	280	265	266	269	255	224	257	260	318	253	252	354	5,696	Niigata
10	Gunma	361	371	398		353		347	352	341	302	272	280	297	277	288	317	287	323	296	306	313	316	321	6,718	Gunma
24	Mie	279	276	300		266		281	335	293	279	265	235	225	255	270	248	244	251	237	264	256	269	279	5,607	Mie
20	Nagano	184	167	205		213		200	162	209	208	163	187	170	179	176	223	187	190	201	246	228	221	262	4,181	Nagano
9	Tochigi	256	240	264		244		229	213	239	230	222	212	174	215	205	218	193	185	212	237	217	243	257	4,705	Tochigi
7	Fukushima	266	277	260		231		248	240	201	232	207	222	208	250	260	245	191	216	211	226	207	223	226	4,847	Fukushima
46	Kagoshima	237	240	234		222		254	236	241	224	187	197	207	188	213	222	203	211	189	222	193	215	223	4,558	Kagoshima
21	Gifu	248	279	242		263		272	255	210	219	198	202	200	192	208	188	208	196	218	215	214	178	211	4,616	Gifu
2	Aomori	170	150	187		162		144	107	167	145	124	136	130	171	144	129	133	133	141	144	140	140	189	3,086	Aomori
43	Kumamoto	220	268	235		228		228	268	233	247	214	211	206	175	218	189	183	210	199	238	214	216	186	4,586	Kumamoto
37	Kagawa	172	199	210		184		180	163	204	174	135	146	144	147	151	114	131	165	161	161	157	156	179	3,433	Kagawa
38	Ehime	214	220	205		214		184	238	224	192	171	206	170	181	163	174	167	172	187	166	180	173	173	3,974	Ehime
17	Ishikawa	139	162	161		157		141	152	151	128	135	153	143	115	127	114	131	115	141	154	137	153	166	2,975	Ishikawa
45	Miyazaki	148	139	149		135		174	140	162	144	132	133	120	118	118	159	145	137	133	157	161	145	162	3,011	Miyazaki
41	Saga	139	156	141		156		167	150	157	136	116	152	140	145	160	164	144	123	133	152	172	163	160	3,126	Saga
25	Shiga	191	172	188		195		163	176	160	183	138	165	170	178	188	161	155	181	139	169	143	152	157	3,524	Shiga
29	Nara	111	114	119		130		156	180	169	154	162	144	152	161	175	187	153	165	152	164	162	152	151	3,213	Nara
42	Nagasaki	149	147	127		184		147	130	147	137	136	138	154	128	136	150	129	135	112	150	156	168	149	3,009	Nagasaki
3	Iwate	169	154	197		139		157	164	149	138	94	123	172	140	154	175	159	132	143	162	147	112	145	3,125	Iwate
6	Yamagata	118	117	107		98		105	135	110	129	98	93	122	104	104	100	100	80	109	118	97	96	140	2,280	Yamagata
35	Yamaguchi	188	195	191		170		163	153	131	171	131	123	134	105	133	120	116	132	110	156	138	127	129	3,016	Yamaguchi
44	Oita	152	133	129		134		148	123	134	118	112	104	108	98	86	115	84	106	93	129	127	123	126	2,482	Oita
16	Toyama	189	178	194		182		171	149	139	146	122	125	134	124	124	138	129	108	164	138	143	130	120	3,047	Toyama
5	Akita	115	120	112		87		75	96	104	96	87	106	96	94	78	100	80	97	82	127	93	94	113	2,052	Akita
47	Okinawa	33	56	35		49		74	51	67	71	65	79	75	69	81	80	85	96	116	93	95	112	107	1,589	Okinawa
30	Wakayama	132	153	163		135		152	138	141	163	120	117	127	122	109	114	129	130	129	143	126	109	103	2,755	Wakayama
36	Tokushima	95	113	90		106		99	100	102	100	73	85	75	84	80	77	104	90	68	98	83	85	102	1,909	Tokushima
19	Yamanashi	67	66	84		75		73	64	69	76	59	55	58	71	73	68	63	61	77	98	79	85	100	1,521	Yamanashi

18	Fukui	137	126	140		116		117	122	112	116	70	81	112	77	93	101	72	86	99	84	103	108	99	2,171	Fukui
39	Kochi	114	129	111		101		111	107	83	87	83	86	80	82	85	85	74	86	118	104	83	96	74	1,979	Kochi
32	Shimane	75	93	88		71		67	58	66	68	61	57	51	64	56	61	57	50	68	55	55	54	68	1,343	Shimane
31	Tottori	58	83	44		62		63	50	70	47	59	50	56	48	46	54	45	51	59	79	57	59	57	1,197	Tottori
	total	17,711	18,120	18,439		17,540		17,259	17,740	17,464	17,354	15,253	15,861	16,048	15,908	16,303	16,421	15,976	16,087	16,622	17,783	16,968	16,859	17,867	355,583	total

Data source : <https://anzeninfo.mhlw.go.jp/user/anzen/tok/anst00.htm>

Return to https://www.jisha.or.jp/english/statistics/202211_23.html