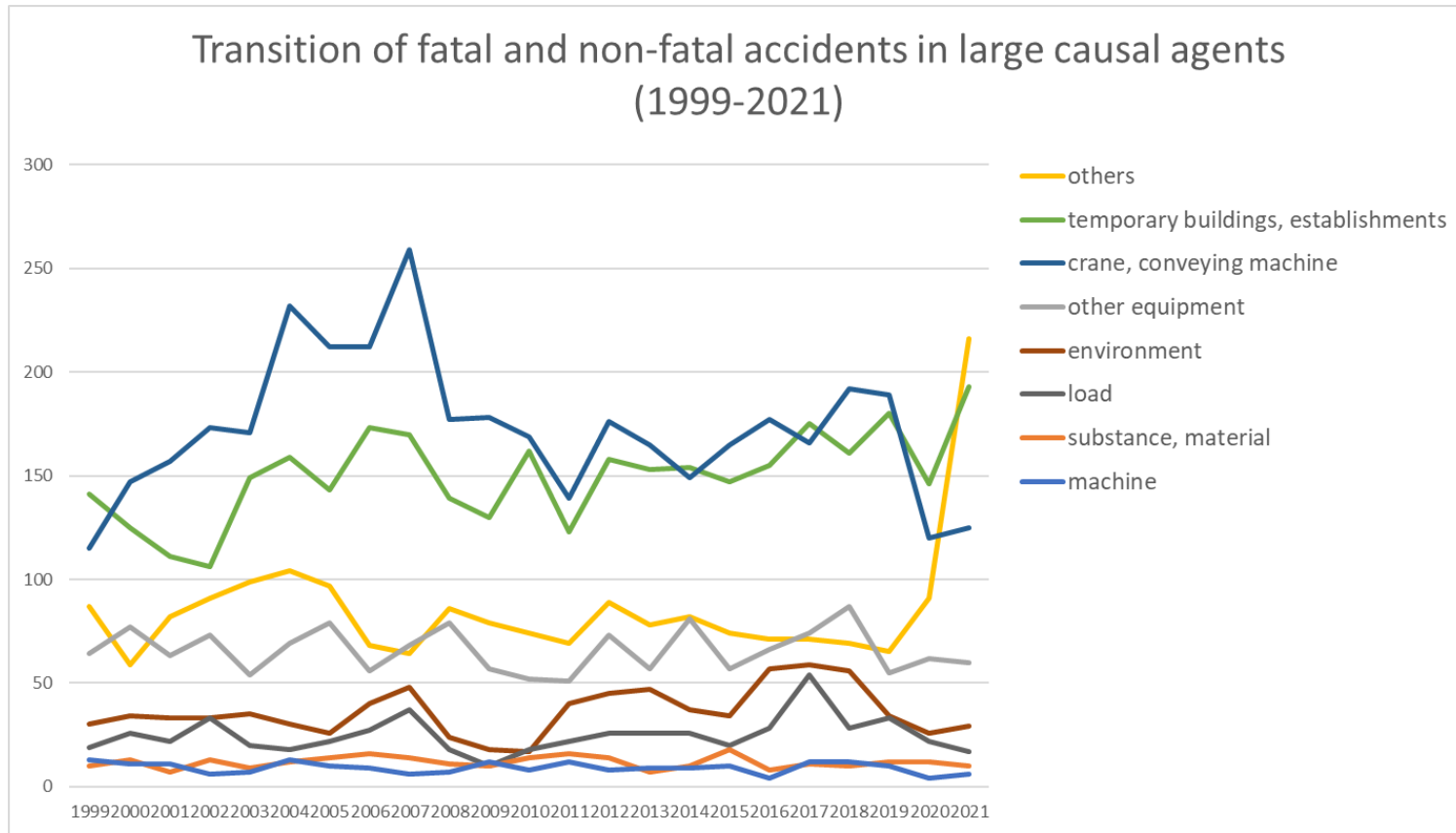
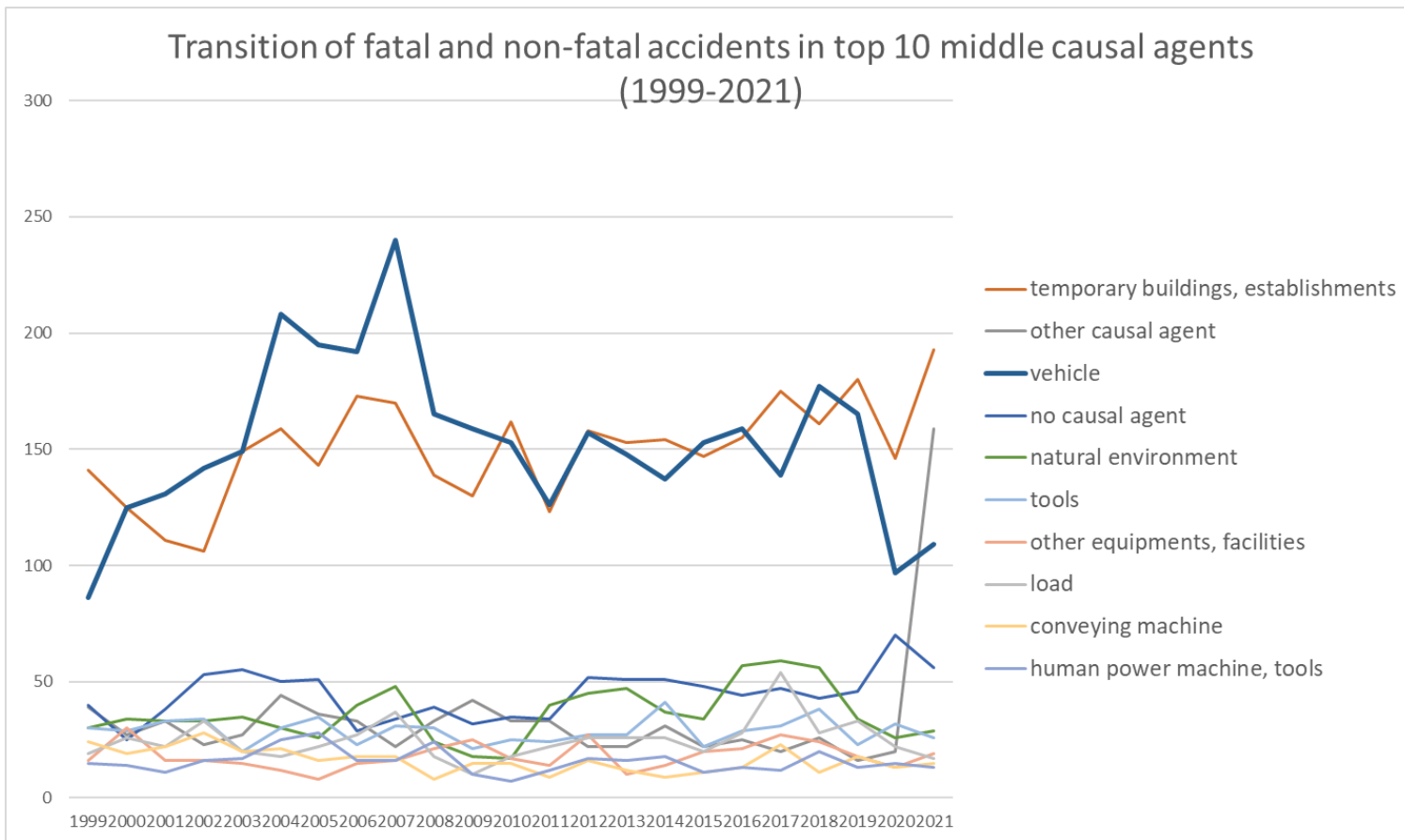


Transition of fatal and non-fatal accidents in each element like as causal agents, type of accidents, etc. in code no. 0401 railroad/water transportation/airline service (1999-2021)



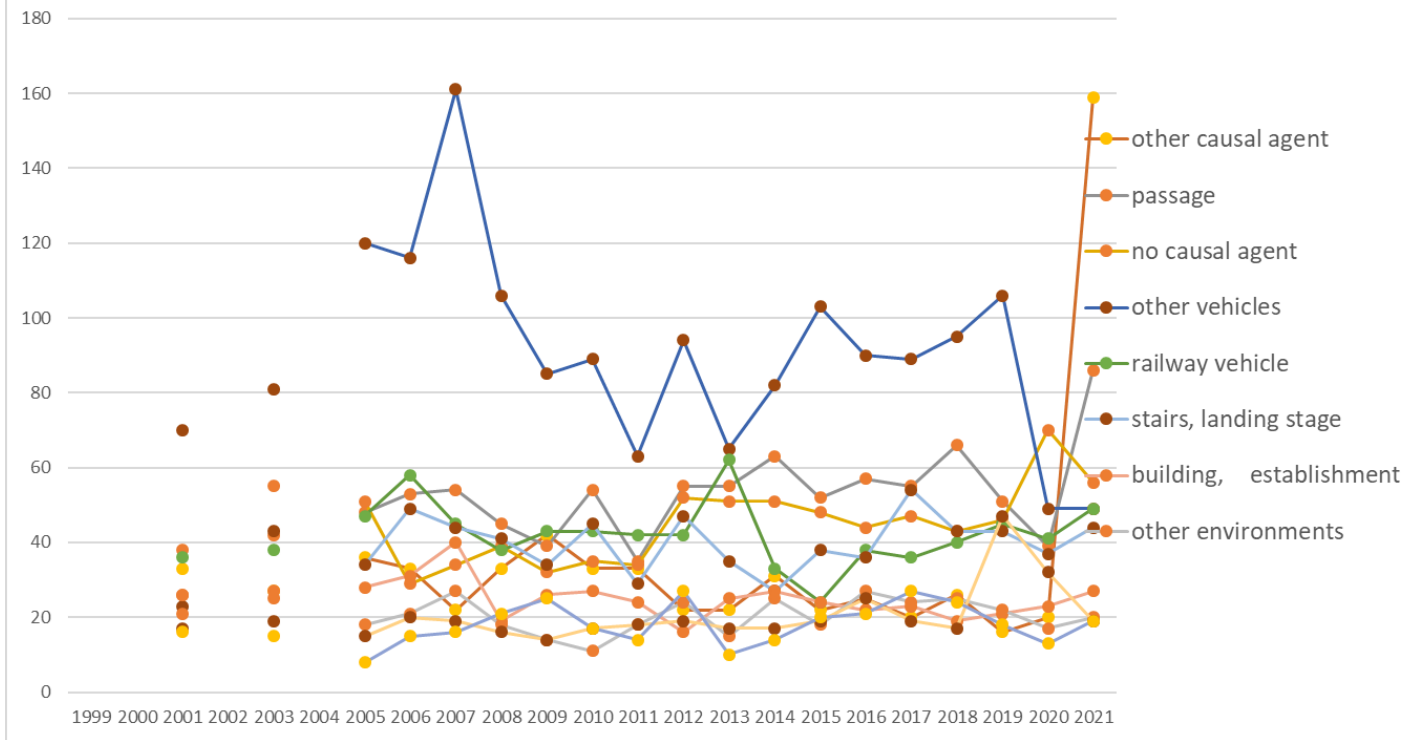
Transition of fatal and non-fatal accidents in large causal agents in code no. 0401 railroad/water transportation/airline service (1999-2021)

Transition of fatal and non-fatal accidents in top 10 middle causal agents (1999-2021)



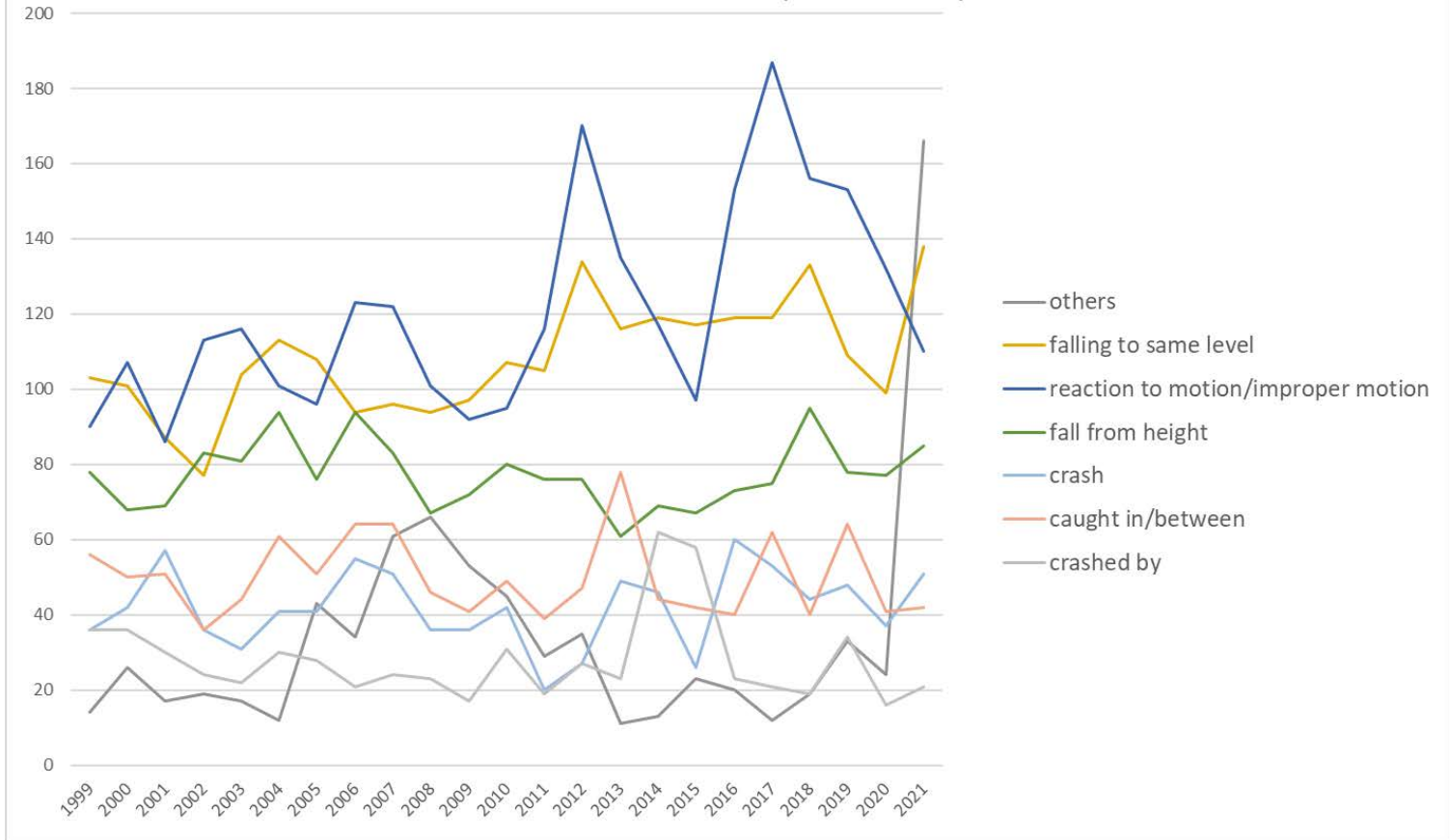
Transition of fatal and non-fatal accidents in middle causal agents in code no. 0401 railroad/water transportation/airline service (1999-2021)

Transition of fatal and non-fatal accidents in top 10 small causal agents (1999-2021)



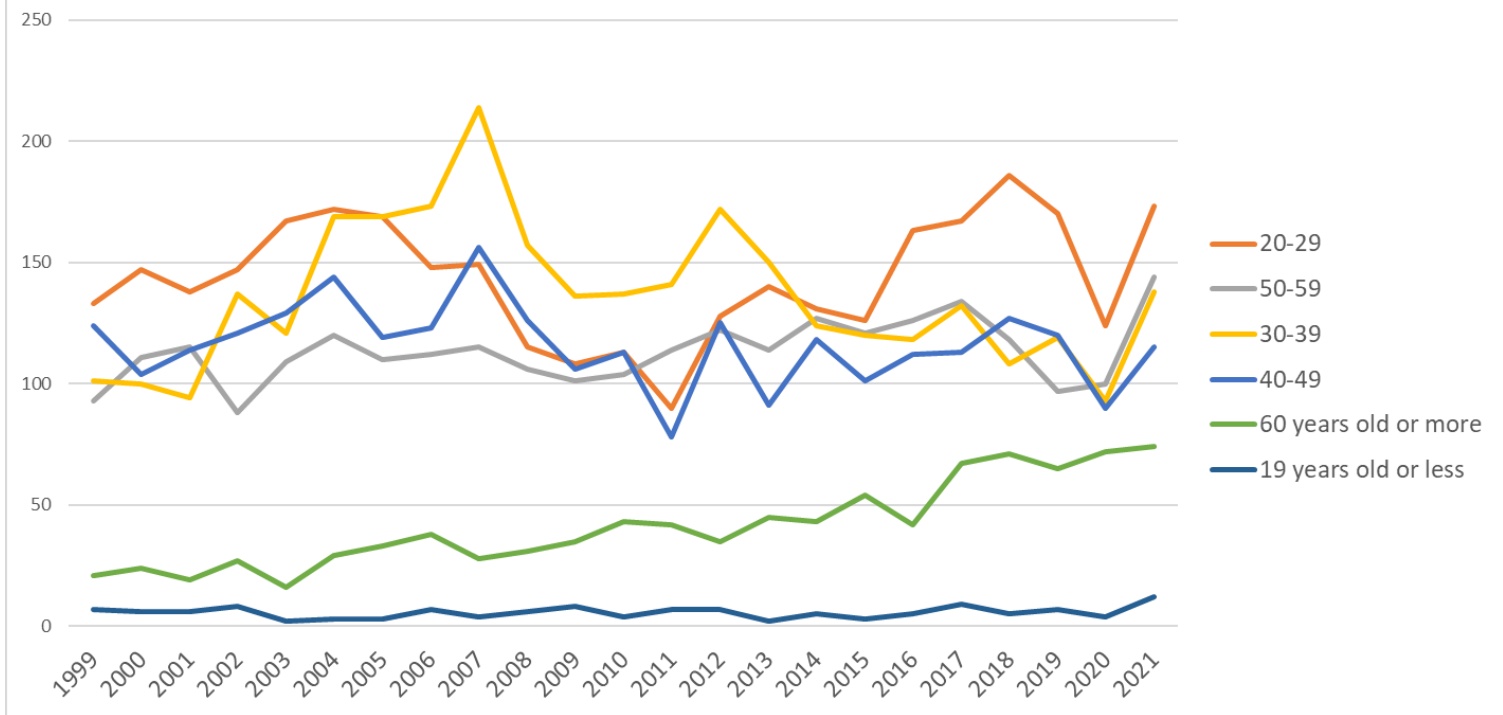
Transition of fatal and non-fatal accidents in small causal agents in code no. 0401 railroad/water transportation/airline service (1999-2021)

Transition of fatal and non-fatal accidents in top 7 type of accidents
(1999-2021)



Transition of fatal and non-fatal accidents in type of accidents in code no. 0401 railroad/water transportation/airline service (1999-2021)

Transition of fatal and non-fatal accidents in workers ages (1999-2021)



Transition of fatal and non-fatal accidents in workers ages in code no. 0401 railroad/water transportation/airline service (1999-2021)

