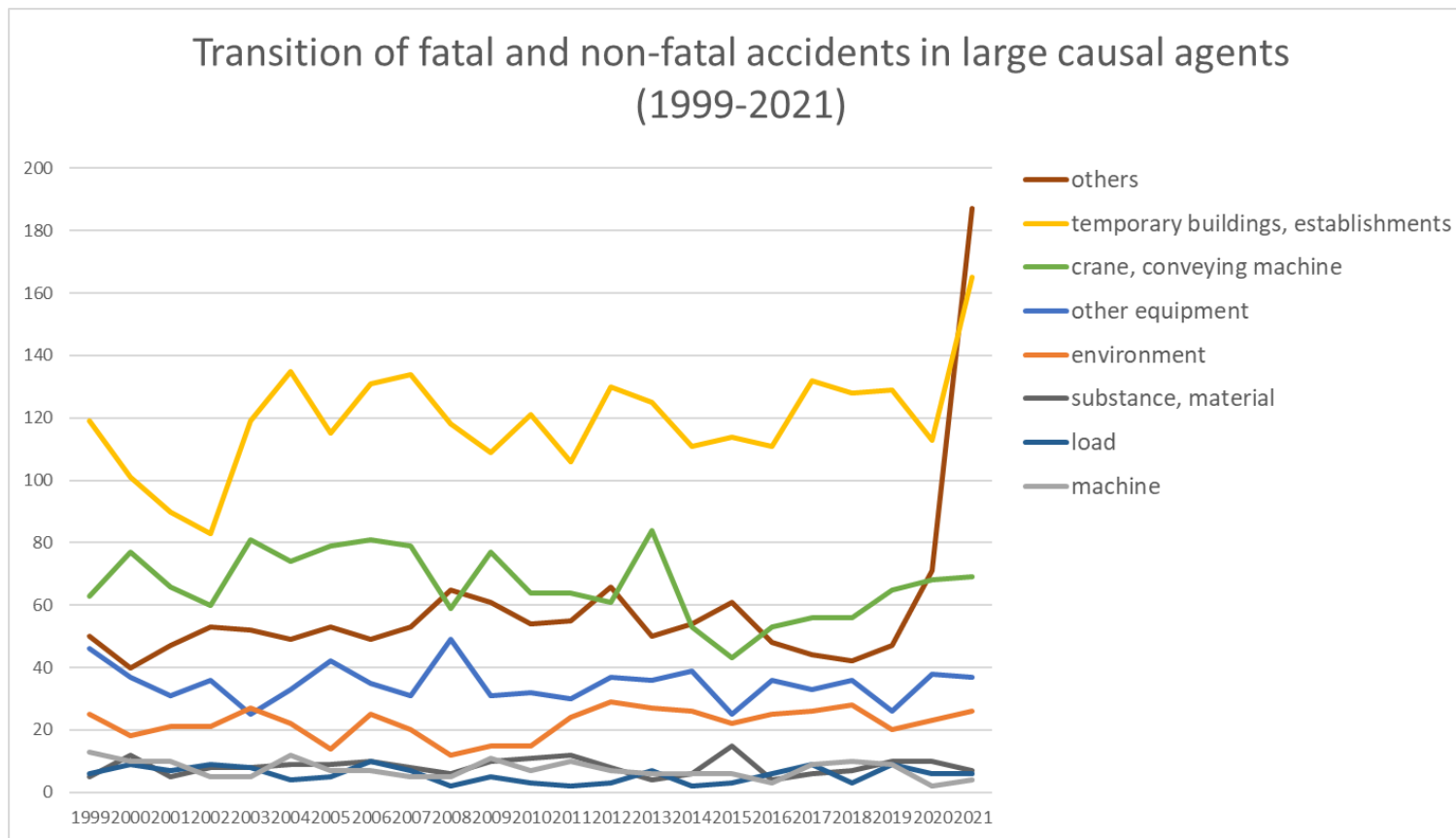
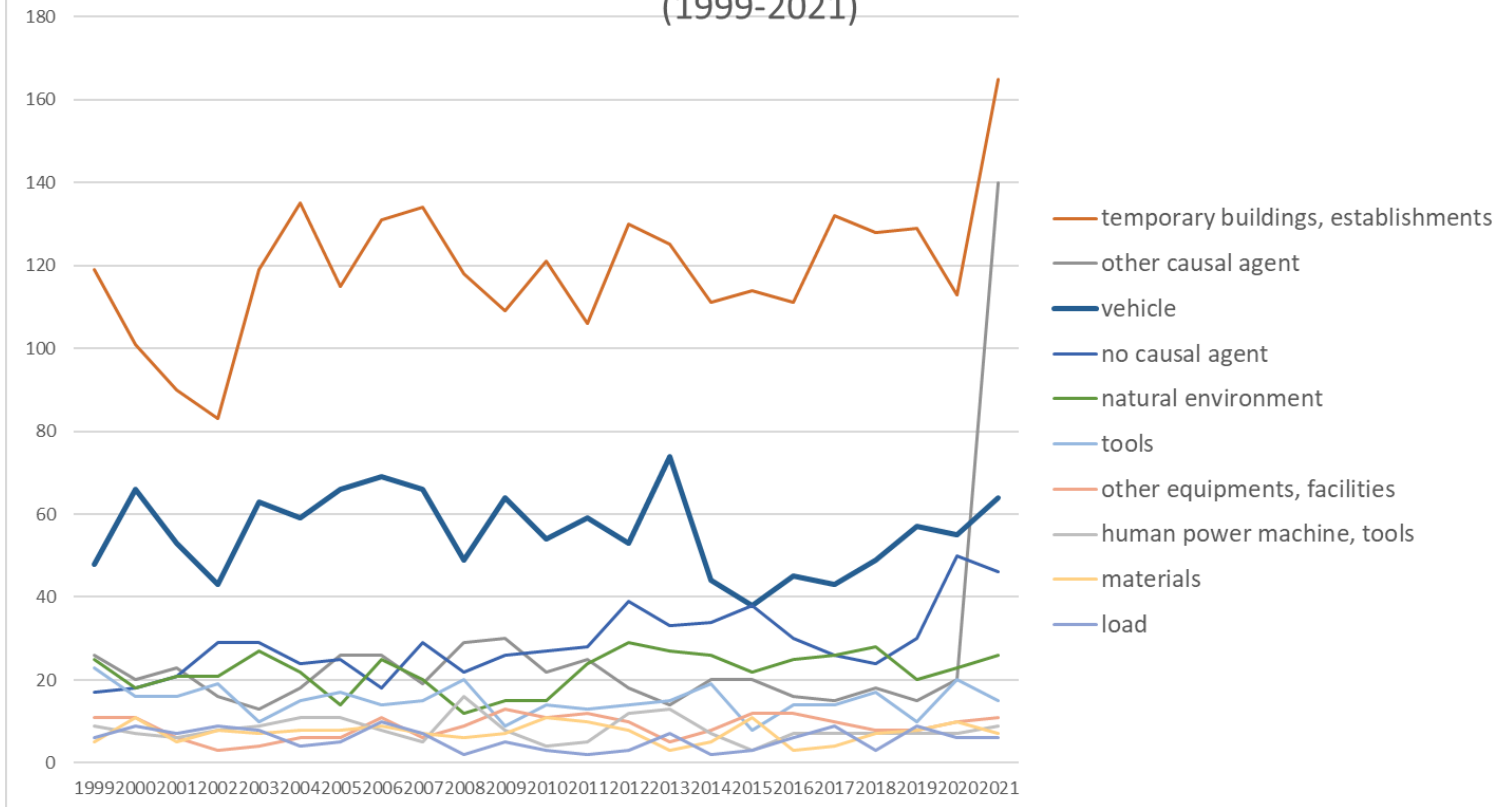


Transition of fatal and non-fatal accidents in each element like as causal agents, type of accidents, etc. in code no. 040101 railroad service (1999-2021)



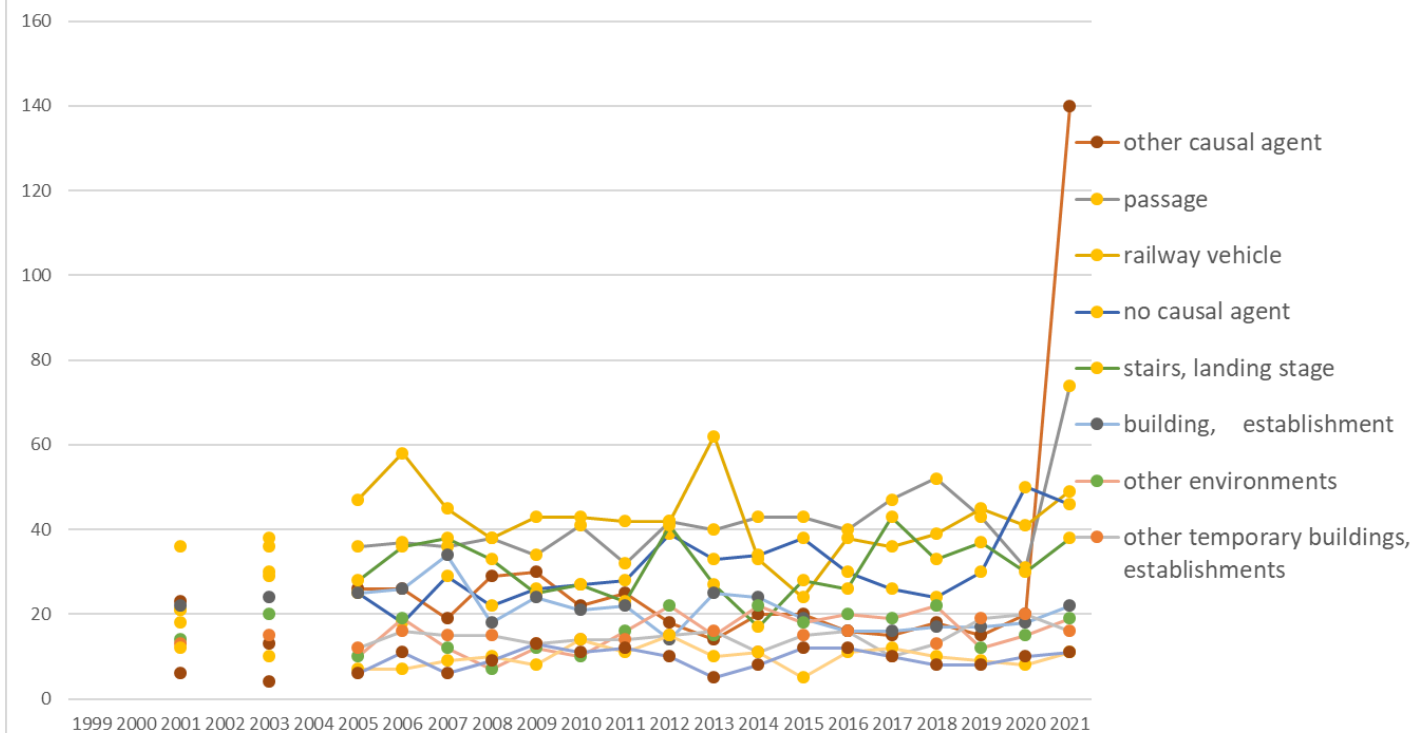
Transition of fatal and non-fatal accidents in large causal agents in code no. 040101 railroad service (1999-2021)

Transition of fatal and non-fatal accidents in top 10 middle causal agents
(1999-2021)



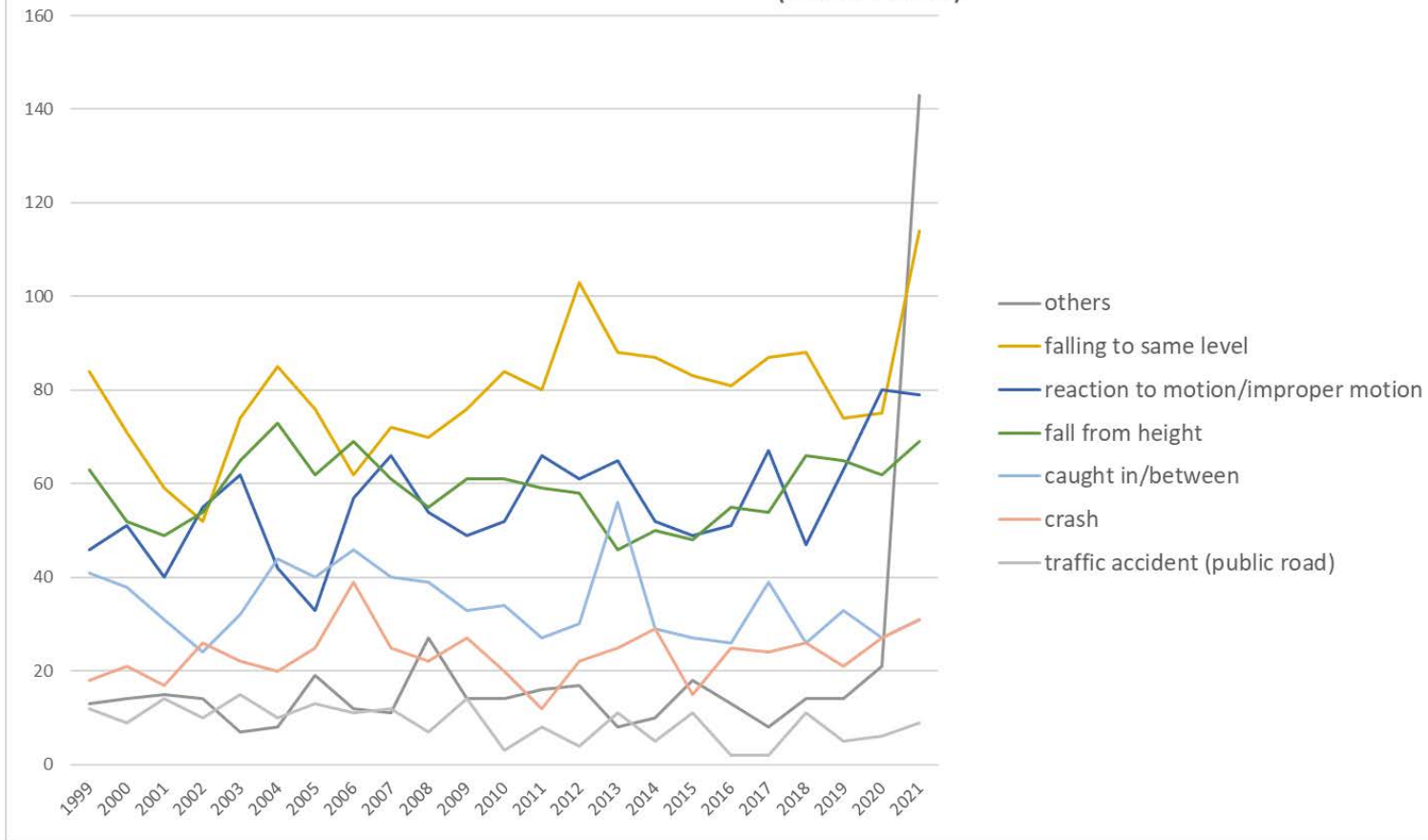
Transition of fatal and non-fatal accidents in middle causal agents in code no. 040101 railroad service (1999-2021)

Transition of fatal and non-fatal accidents in top 10 small causal agents (1999-2021)



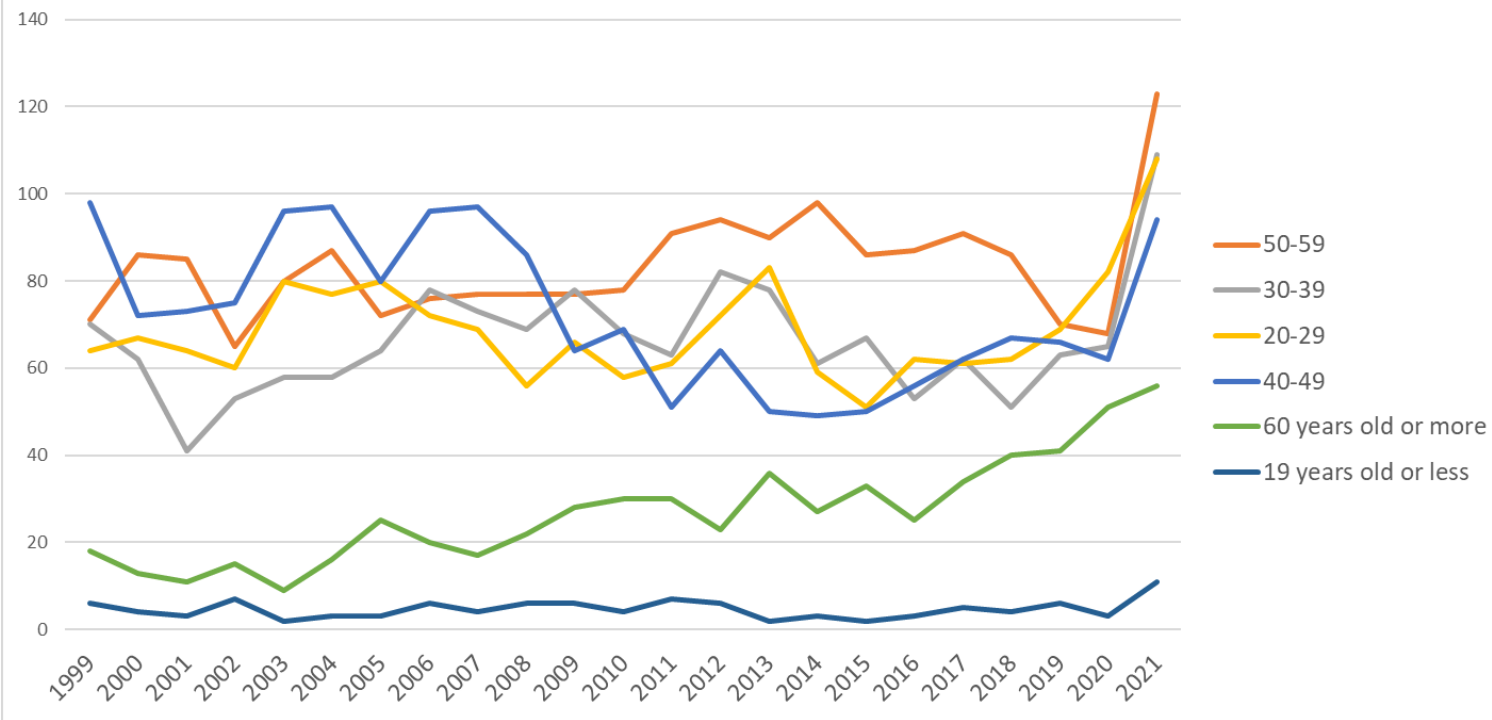
Transition of fatal and non-fatal accidents in small causal agents in code no. 040101 railroad service (1999-2021)

Transition of fatal and non-fatal accidents in top 7 type of accidents
(1999-2021)



Transition of fatal and non-fatal accidents in type of accidents in code no. 040101 railroad service (1999-2021)

Transition of fatal and non-fatal accidents in workers ages (1999-2021)



Transition of fatal and non-fatal accidents in workers ages in code no. 040101 railroad service (1999-2021)

28	Hyogo	15	14	11		5		12	12	10	10	5	13	12	14	12	9	16	12	13	11	11	19	15	251	Hyogo	
15	Niigata	24	10	9		6		7	10	12	9	9	6	8	11	6	10	2	8	8	4	5	11	15	190	Niigata	
26	Kyoto	6	1	2		1		9	8	8	3	8	4	9	8	16	17	7	11	11	12	10	11	13	175	Kyoto	
37	Kagawa	7	3	6		7		6	8	10	2	7	5		4	4	2	2	4	3	5	5	3	13	106	Kagawa	
23	Aichi	11	11	10		3		18	18	17	10	18	11	12	15	13	12	14	6	9	12	11	7	11	249	Aichi	
34	Hiroshima	5	9	6		18		6	9	8	4	10	6	9	7	8	3	6	7	9	7	12	7	10	166	Hiroshima	
25	Shiga	2	7	4		3		1	5	2	1	1	4	6	4	6	3	1	5	1	1	1	4	10	72	Shiga	
10	Gunma	11	16	8		12		14	5	6	10	15	4	11	15	12	12	18	6	11	7	8	5	6	212	Gunma	
4	Miyagi	5	7	7		9		5	3	10	6	5	13	8	6	6	3	6	3	7	4	4	4	6	127	Miyagi	
46	Kagoshima	6	1	2		1		2			1			1	1	1	4	4	2	3	2	3	2	6	42	Kagoshima	
8	Ibaraki	7	7	11		11		2	7	5	1	3	3	2	7	8	4	1	1	3			3	5	91	Ibaraki	
16	Toyama	1	4	2		6		2	2	2		1	3	4	1	1	1	6	2	3	4	5	4	5	59	Toyama	
43	Kumamoto	2	5	2						1	1	4	7	1	2	2	3	1	2	3	2	2	2	5	47	Kumamoto	
5	Akita	2	2	3		2		3	2	4	3	2	3	3	5	5	2	1	6	4	4	4	2	4	66	Akita	
6	Yamagata	2	5	3		2			3	4	2	2	6	6	1	6	1		2	7	1	1	4	4	62	Yamagata	
3	Iwate	2		3		2		3	1	1	1	1	1		1	3	4	3	1	1	2	2	1	4	37	Iwate	
30	Wakayama	2		1		1		3	2		2			2	1	1		1	3	2		1	1	4	27	Wakayama	
22	Shizuoka	2	3	4		11		4	3	7	8	5	3	6	8	4	6	5	4	3	6	3	1	3	99	Shizuoka	
7	Fukushima	8	5	3		4		9	9	5	6	5	9	3	5	6	4	1	2	4	3	2	2	3	98	Fukushima	
42	Nagasaki	4		5		3		1	4	5	7	9	3	4	3	3	5	3	2	2	1	1	7	3	75	Nagasaki	
33	Okayama	1	8	2		1		5	4	3	6	2	2	1	3	2	4	2	3	4	2	2	4	3	64	Okayama	
2	Aomori	2	4	2		4		8	1	3	1	3	3	5	7	2	3				1	3	3	3	58	Aomori	
29	Nara	1	1	2		1		1	1	3	3	1	1	1	1	3	2	4	4	4	4	1	1	4	3	43	Nara

18	Fukui	1	8	2		1		1	1		4	3	2	1	2		2		1	1			3	3	36	Fukui
21	Gifu		4	2		2		6	4	4	3	2	5	3	2	3	2	2		4	5	3	1	2	59	Gifu
24	Mie	5		4		2		4	4	3	3	4	2	2	1	4		3	5	2	2	4	2	2	58	Mie
35	Yamaguchi		1			2		1	2		3	4	1	4	3	4	1	3	3	3	3	5	2	2	47	Yamaguchi
38	Ehime	4	5	2		3		3	3	3	5	5	2	5	2	5	6	2	2	2	2	2	6	1	70	Ehime
39	Kochi	1	4	1		1		6	2	1	1	1	2	1		2	1		3	2	2	1	1	1	34	Kochi
19	Yamanashi	1		3		4		2	3	1	1	2		1		2		1	2	2	1		2	1	29	Yamanashi
44	Oita	3		3		2				2				1		1	2	2	1	1	3			1	22	Oita
32	Shimane		2	1		1			2	1	3	1					1			3			1	1	17	Shimane
45	Miyazaki	1				1							1	2						1	1		1	1	9	Miyazaki
36	Tokushima	1				2		4		2	3	5	1			1	1	5	4	3	2		1		35	Tokushima
9	Tochigi	2	2	2		2			4	3		1	1	2	2	1	3	1	1	2	4	1			34	Tochigi
31	Tottori	2				2		1	6			2						2				1	3		19	Tottori
41	Saga	1	1	1					1	1	2		2		2	1		1			1				14	Saga
47	Okinawa													1		1	2								4	Okinawa
	total	327	304	277		325		324	348	337	316	319	307	303	341	339	297	289	286	315	310	315	331	501	6,811	total

Data source : <https://anzeninfo.mhlw.go.jp/user/anzen/tok/anst00.htm>

Return to https://www.jisha.or.jp/english/statistics/202211_23.html