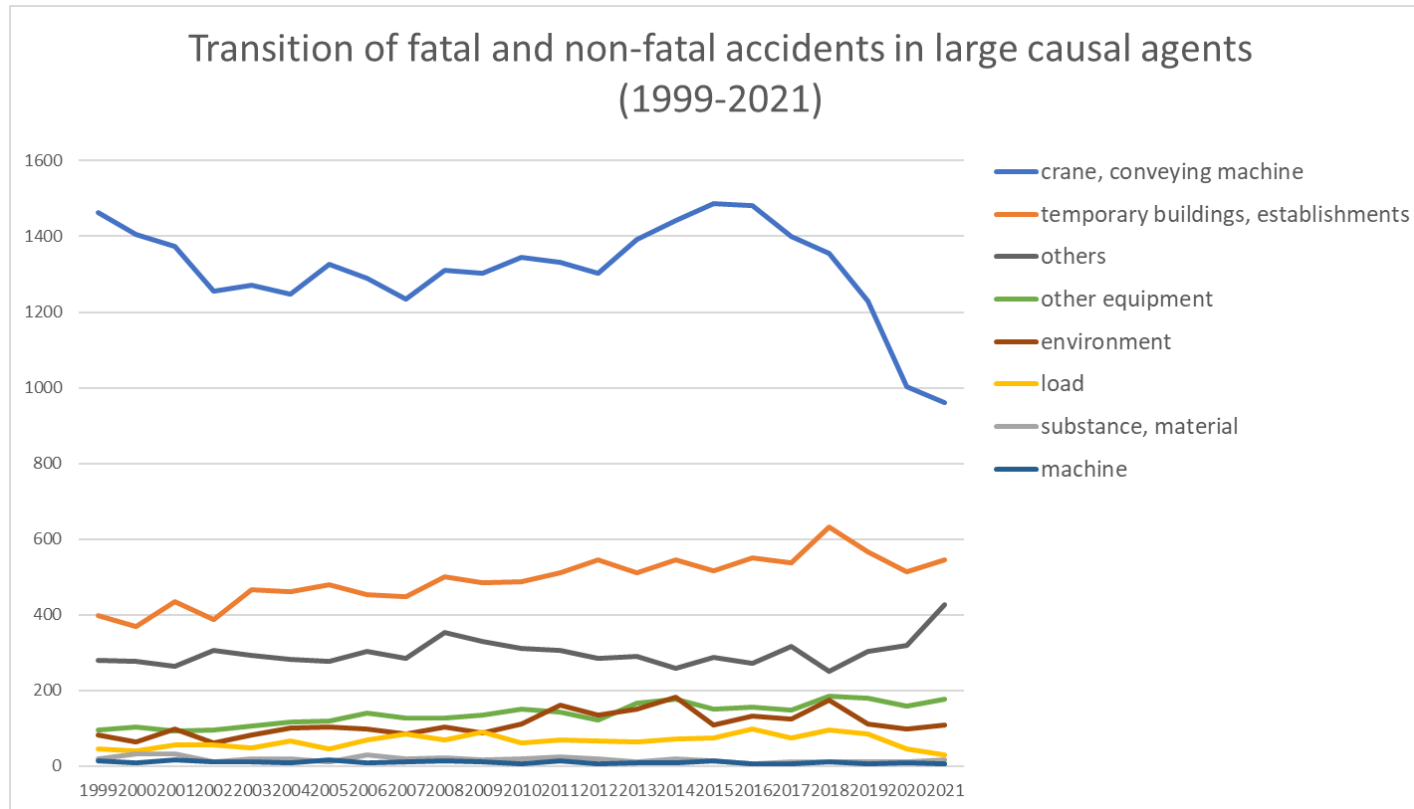
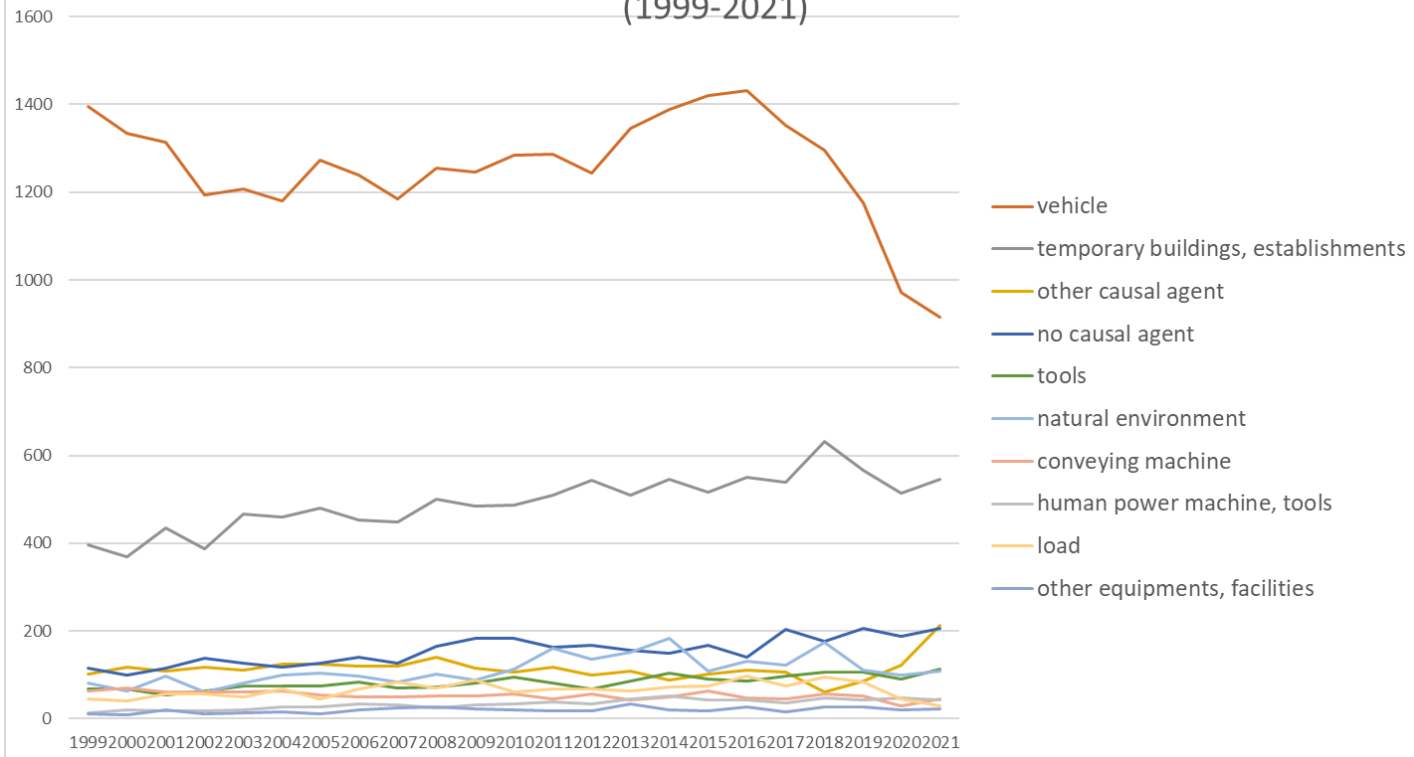


Transition of fatal and non-fatal accidents in each element like as causal agents, type of accidents, etc. in code no. 0402 road passenger transport service (1999-2021)



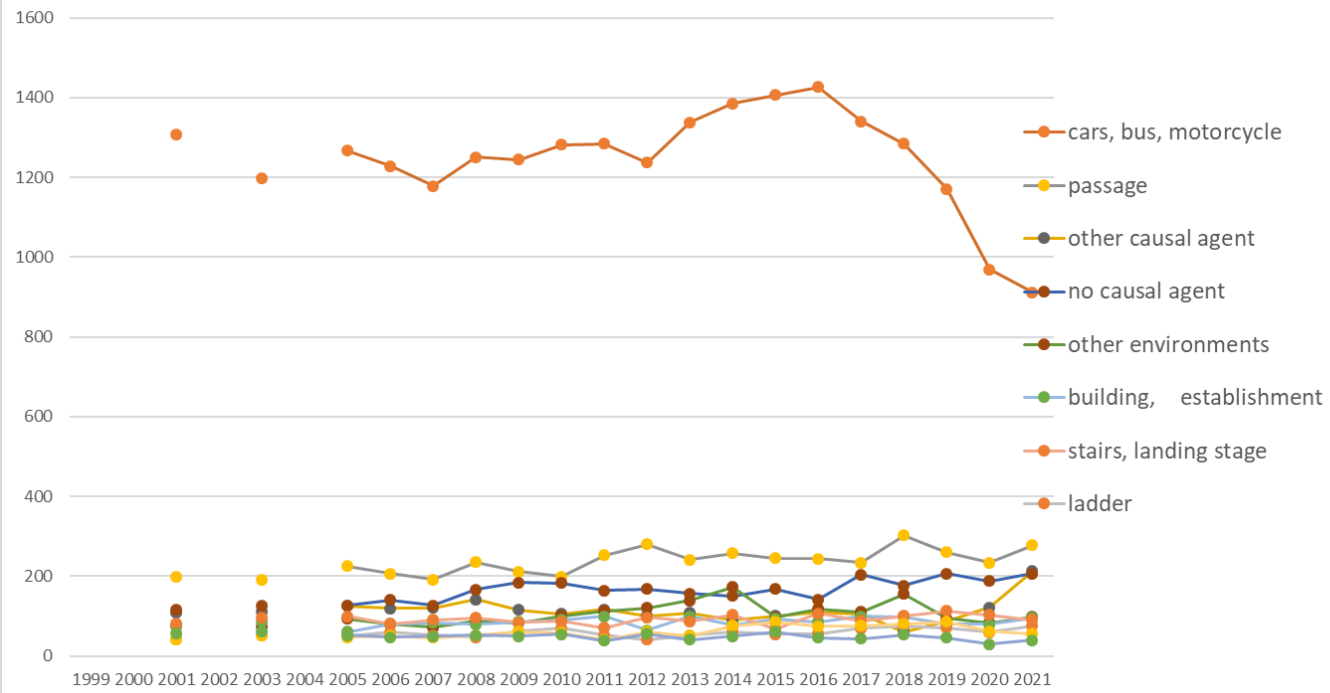
Transition of fatal and non-fatal accidents in large causal agents in code no. 0402 road passenger transport service (1999-2021)

Transition of fatal and non-fatal accidents in top 10 middle causal agents  
(1999-2021)



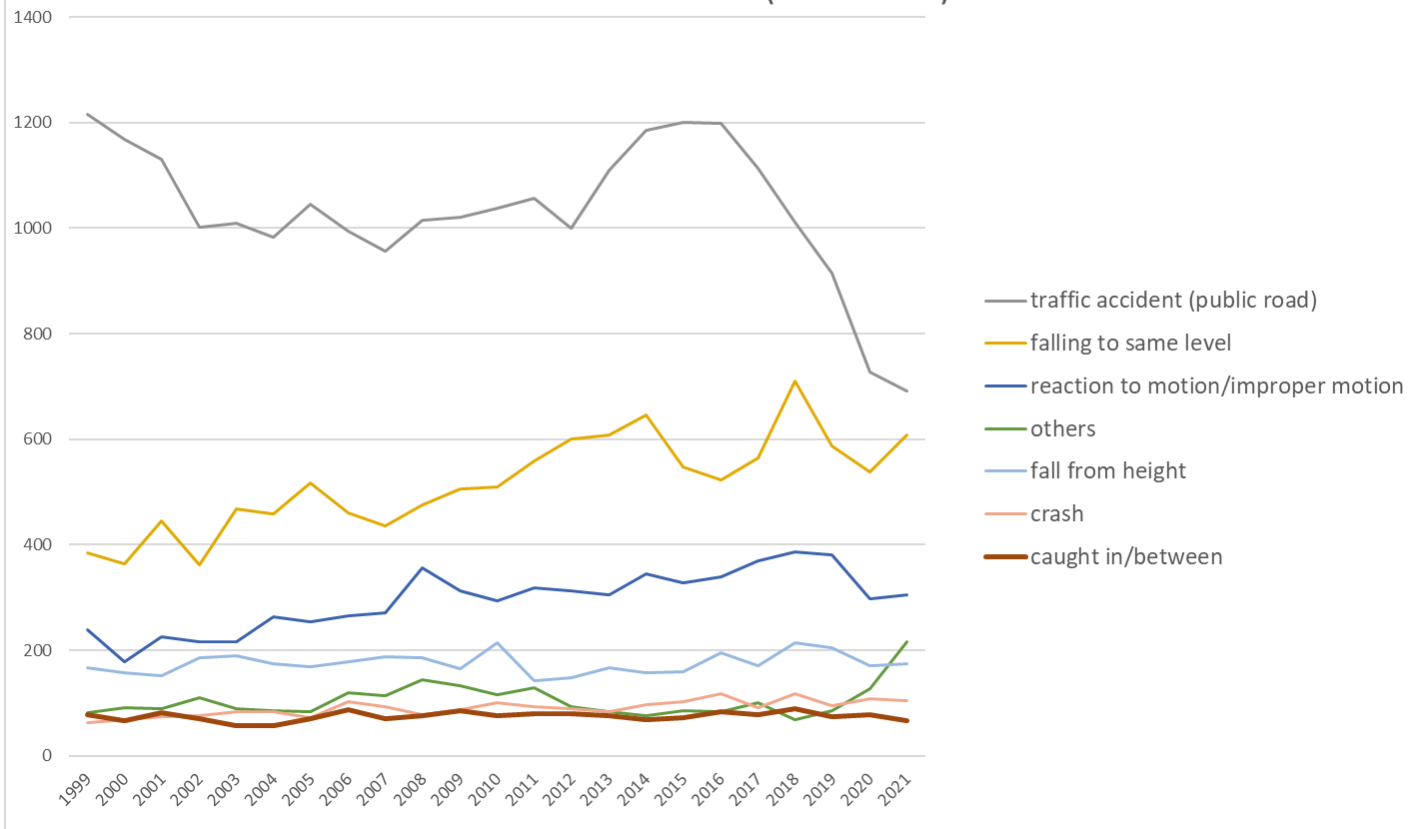
Transition of fatal and non-fatal accidents in middle causal agents in code no. 0402 road passenger transport service (1999-2021)

### Transition of fatal and non-fatal accidents in top 10 small causal agents (1999-2021)



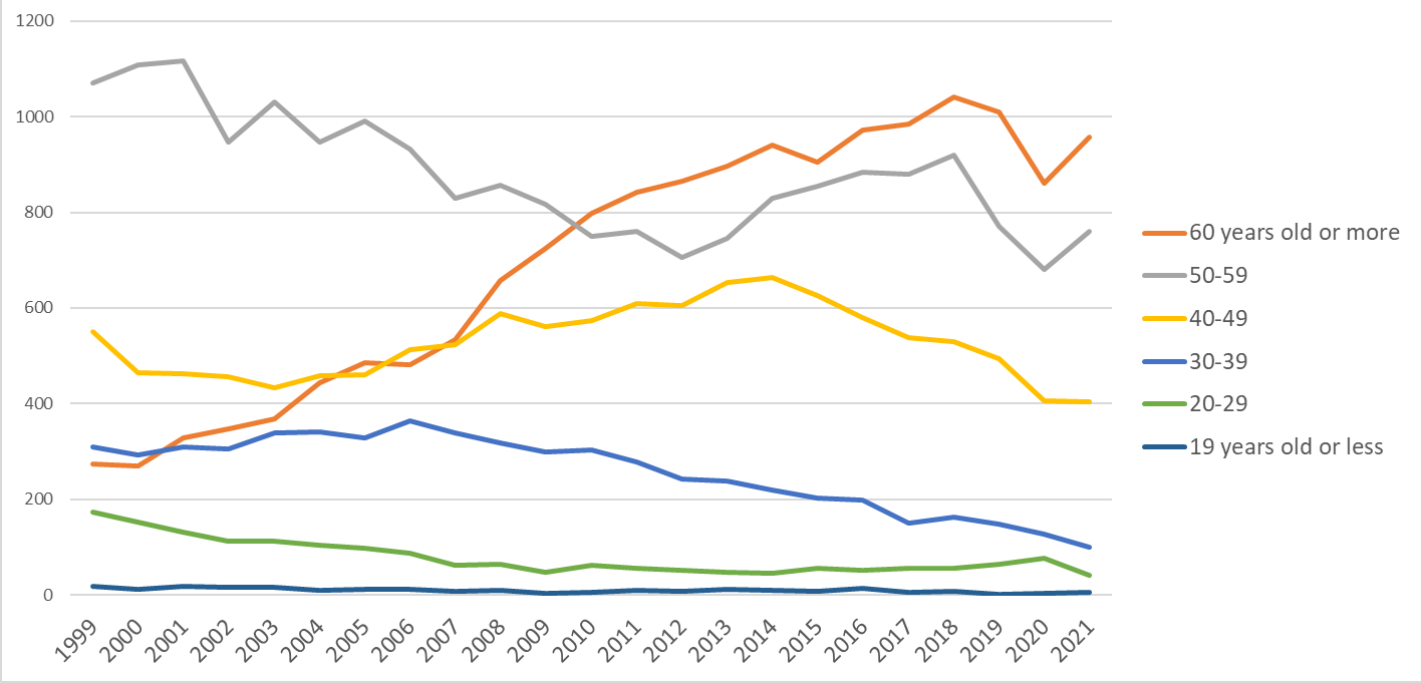
Transition of fatal and non-fatal accidents in small causal agents in code no. 0402 road passenger transport service (1999-2021)

Transition of fatal and non-fatal accidents in top 7 type of accidents  
(1999-2021)



Transition of fatal and non-fatal accidents in type of accidents in code no. 0402 road passenger transport service (1999-2021)

Transition of fatal and non-fatal accidents in workers ages (1999-2021)



Transition of fatal and non-fatal accidents in workers ages in code no. 0402 road passenger transport service (1999-2021)































15	burst	3	2	1	2	1	2	2			3	1			1		2						1			21	burst
10	drown	1												15		1			1							18	drown
09	injury to the sole of the foot	2	2	1	1			1			2	1		3	1	1						1	1			17	injury to the sole of the foot
13	electric shock		1			1			1					1												4	electric shock
	total	2,396	2,301	2,366	2,183	2,299	2,303	2,377	2,390	2,296	2,496	2,455	2,492	2,555	2,481	2,594	2,708	2,654	2,702	2,616	2,716	2,489	2,156	2,270	56,295	total	

Transition of fatal and non-fatal accidents in workers ages in code no. 0402 road passenger transport service (1999-2021)

code	Age	1999	2000	2001	2002	2003	2004	2005	2006	2007	2008	2009	2010	2011	2012	2013	2014	2015	2016	2017	2018	2019	2020	2021	total	Age
6	60 years old or more	273	270	328	347	368	443	486	481	534	658	725	798	841	866	896	940	905	971	984	1,040	1,010	861	957	15,982	60 years old or more
5	50-59	1,071	1,109	1,116	947	1,031	947	990	932	830	857	816	749	761	706	746	829	855	884	880	919	771	680	761	20,187	50-59
4	40-49	551	464	462	456	433	458	461	513	523	589	562	574	610	606	654	664	627	581	538	529	493	407	404	12,159	40-49
3	30-39	309	293	310	305	339	341	329	364	340	318	300	303	278	243	238	219	203	199	151	163	149	128	101	5,923	30-39
2	20-29	174	152	131	112	112	105	98	87	62	65	48	62	56	52	48	46	56	52	57	57	65	76	42	1,815	20-29
1	19 years old or less	18	13	19	16	16	9	13	13	7	9	4	6	9	8	12	10	8	15	6	8	1	4	5	229	19 years old or less
	total	2,396	2,301	2,366	2,183	2,299	2,303	2,377	2,390	2,296	2,496	2,455	2,492	2,555	2,481	2,594	2,708	2,654	2,702	2,616	2,716	2,489	2,156	2,270	56,295	total

Transition of fatal and non-fatal accidents in workers scales in code no. 0402 road passenger transport service (1999-2021)

code	Workers scale	1999	2000	2001	2002	2003	2004	2005	2006	2007	2008	2009	2010	2011	2012	2013	2014	2015	2016	2017	2018	2019	2020	2021	total	Workers scale
5	100-299	1,177	1,116	1,211	1,072	1,150	1,144	1,174	1,207	1,137	1,178	1,248	1,308	1,343	1,288	1,343	1,519	1,400	1,454	1,339	1,367	1,310	1,110	1,162	28,757	100-299
4	50-99	430	458	457	425	454	417	448	429	437	447	457	470	498	463	500	466	477	539	532	556	494	399	448	10,701	50-99
6	300 workers or more	437	377	375	348	346	391	392	374	364	446	386	323	304	313	369	331	378	309	323	306	275	286	247	8,000	300 workers or more
3	30-49	147	162	157	145	164	142	166	186	163	192	183	186	183	206	178	195	179	185	176	230	191	178	209	4,103	30-49

2	10-29	125	121	106	141	120	135	145	136	135	163	124	137	162	152	142	143	159	161	173	177	151	133	143	3,284	10-29
1	9 workers or less	80	67	60	52	65	74	52	58	60	70	57	68	65	59	62	54	61	54	73	80	68	50	61	1,450	9 workers or less
	total	2,396	2,301	2,366	2,183	2,299	2,303	2,377	2,390	2,296	2,496	2,455	2,492	2,555	2,481	2,594	2,708	2,654	2,702	2,616	2,716	2,489	2,156	2,270	56,295	total

Transition of fatal and non-fatal accidents in months in code no. 0402 road passenger transport service (1999-2021)

code	Month	1999	2000	2001	2002	2003	2004	2005	2006	2007	2008	2009	2010	2011	2012	2013	2014	2015	2016	2017	2018	2019	2020	2021	total	Month
1	January	226	217	288	257	275	268	242	276	200	235	287	288	314	278	319	296	278	333	288	375	259	239	276	6,314	January
12	December	215	195	189	190	191	198	275	178	194	237	240	205	213	214	223	256	221	230	256	223	212	198	219	4,972	December
2	February	260	256	248	182	233	226	235	265	207	273	226	249	252	303	255	342	261	222	232	250	210	251	205	5,643	February
3	March	223	203	218	180	211	203	221	216	229	217	228	224	246	195	221	256	242	264	213	273	235	241	201	5,160	March
11	November	170	172	173	179	163	155	154	156	180	176	173	173	174	183	192	185	213	207	220	202	212	153	198	4,163	November
8	August	167	164	170	171	168	169	176	159	179	194	186	208	204	198	179	204	194	200	215	202	203	184	196	4,290	August
7	July	200	179	173	173	177	160	187	203	167	212	182	189	188	204	191	196	231	201	183	205	202	177	186	4,366	July
4	April	213	181	193	171	177	174	177	194	196	196	197	191	202	196	225	170	211	265	200	215	200	134	169	4,447	April
5	May	180	184	188	157	168	180	186	193	202	188	222	187	203	175	205	186	199	176	184	166	197	111	169	4,206	May
10	October	197	173	153	166	179	195	180	188	188	215	183	191	173	176	220	215	209	206	232	187	223	157	164	4,370	October
6	June	184	202	194	185	163	198	181	198	190	189	175	212	179	174	177	221	188	193	189	190	192	154	144	4,272	June
9	September	161	175	179	172	194	177	163	164	164	164	156	175	207	185	187	181	207	205	204	228	144	157	143	4,092	September
	total	2,396	2,301	2,366	2,183	2,299	2,303	2,377	2,390	2,296	2,496	2,455	2,492	2,555	2,481	2,594	2,708	2,654	2,702	2,616	2,716	2,489	2,156	2,270	56,295	total

Transition of fatal and non-fatal accidents in prefectures in code no. 0402 road passenger transport service (1999-2021)

code	Prefecture	1999	2000	2001	2002	2003	2004	2005	2006	2007	2008	2009	2010	2011	2012	2013	2014	2015	2016	2017	2018	2019	2020	2021	total	Prefecture
13	Tokyo	455	420	441		401		397	447	437	530	568	494	560	489	589	612	630	649	607	644	587	544	512	11,013	Tokyo
14	Kanagawa	242	180	215		195		247	258	280	273	273	313	307	322	311	323	327	313	322	310	291	245	242	5,789	Kanagawa
1	Hokkaido	254	257	285		246		260	238	214	245	222	210	214	221	218	242	216	227	233	218	200	175	191	4,786	Hokkaido

27	Osaka	203	212	179		195		195	195	167	193	202	194	211	175	214	210	205	201	173	232	185	162	187	4,090	Osaka
40	Fukuoka	95	84	98		119		115	99	116	140	130	127	123	95	106	99	111	109	96	97	91	66	120	2,236	Fukuoka
23	Aichi	93	118	113		85		105	110	126	105	135	116	112	123	137	129	138	102	109	117	114	95	105	2,387	Aichi
28	Hyogo	103	116	103		84		94	120	90	104	69	87	78	92	93	101	106	101	93	108	96	93	80	2,011	Hyogo
12	Chiba	47	61	66		63		63	56	77	76	84	78	96	91	66	99	88	91	74	84	111	83	80	1,634	Chiba
11	Saitama	46	36	40		42		43	51	47	50	39	65	46	60	62	70	60	66	75	52	63	66	72	1,151	Saitama
26	Kyoto	163	131	109		146		135	114	105	99	84	110	116	82	101	115	133	138	116	111	102	61	71	2,342	Kyoto
34	Hiroshima	67	57	49		46		47	60	53	38	70	51	40	42	60	38	55	51	49	52	39	38	61	1,063	Hiroshima
22	Shizuoka	38	39	37		34		35	41	56	46	31	52	58	63	54	64	48	83	85	78	68	84	59	1,153	Shizuoka
4	Miyagi	19	23	44		36		42	36	36	31	47	36	58	57	46	43	40	52	47	36	43	29	49	850	Miyagi
20	Nagano	23	20	27		28		24	22	28	32	24	42	24	26	34	37	29	35	19	33	26	28	30	591	Nagano
33	Okayama	41	37	42		40		35	34	38	31	27	22	27	36	35	35	27	28	27	35	30	21	28	676	Okayama
42	Nagasaki	9	22	7		26		15	24	19	23	23	28	24	21	28	30	24	28	27	29	23	20	24	474	Nagasaki
43	Kumamoto	18	31	27		26		31	22	24	13	27	30	22	12	21	16	22	24	24	21	19	14	22	466	Kumamoto
2	Aomori	48	24	37		40		31	18	27	24	19	32	18	37	23	16	23	22	27	15	19	12	21	533	Aomori
47	Okinawa	12	15	12		19		26	24	14	23	12	18	15	21	17	25	20	25	26	23	21	20	19	407	Okinawa
8	Ibaraki	36	49	45		24		32	32	33	27	39	31	33	40	43	39	40	35	31	35	22	27	18	711	Ibaraki
15	Niigata	20	34	26		32		31	35	25	42	32	34	23	37	31	24	26	27	32	27	22	16	18	594	Niigata
46	Kagoshima	30	24	27		33		23	22	18	20	21	20	29	17	17	27	17	27	16	24	6	14	18	450	Kagoshima
3	Iwate	11	21	21		15		20	18	20	17	7	19	33	16	13	21	14	10	13	17	13	9	18	346	Iwate
7	Fukushima	20	14	24		9		21	18	14	16	17	16	14	21	28	27	17	18	21	20	20	13	17	385	Fukushima
21	Gifu	22	16	9		22		30	21	16	20	20	25	16	17	14	23	14	20	25	30	21	16	16	413	Gifu
45	Miyazaki	14	23	17		9		16	18	17	21	14	15	10	10	8	21	17	17	18	21	24	17	14	341	Miyazaki
32	Shimane	1	11	9		12		6	5	8	13	6	4	12	16	11	8	4	10	9	9	8	3	14	179	Shimane
44	Oita	20	10	17		20		20	18	13	14	16	10	19	19	12	21	13	12	8	18	27	18	13	338	Oita

17	Ishikawa	10	10	11		13		11	13	18	13	9	15	22	14	11	9	13	4	12	17	13	8	13	259	Ishikawa
5	Akita	9	10	11		11		8	14	11	17	13	15	12	21	7	14	11	12	7	13	8	8	13	245	Akita
9	Tochigi	13	13	17		19		18	17	14	11	12	11	8	12	15	17	10	7	20	11	14	15	12	286	Tochigi
35	Yamaguchi	13	7	10		20		22	7	5	15	9	17	15	12	13	11	18	6	10	15	16	10	11	262	Yamaguchi
24	Mie	16	20	20		22		20	24	18	17	21	28	22	20	21	15	15	21	12	30	17	20	10	409	Mie
30	Wakayama	31	30	22		13		19	17	14	24	16	13	12	16	14	11	12	11	16	16	13	3	10	333	Wakayama
10	Gunma	28	18	25		23		16	24	18	11	15	12	9	9	16	22	13	22	11	5	13	11	10	331	Gunma
41	Saga	10	10	7		14		16	7	10	14	9	13	18	12	7	6	6	8	9	7	6	5	10	204	Saga
38	Ehime	10	11	6		9		11	12	4	9	9	7	6	13	9	11	11	6	14	11	9	9	10	197	Ehime
29	Nara	17	20	23		22		27	19	9	15	20	7	18	14	16	14	23	28	20	22	21	18	9	382	Nara
25	Shiga	11	9	9		20		12	8	8	10	9	10	14	11	16	11	14	12	9	10	13	8	9	233	Shiga
6	Yamagata	12	5	14		10		11	6	2	14	6	7	10	11	6	7	4	5	10	6	5	8	8	167	Yamagata
18	Fukui	7	3	5		7		3	5	7	8	5	6	11	6	7	8	4	7	14	5	6	6	6	136	Fukui
37	Kagawa	9	17	10		8		6	10	8	9	4	7	6	11	7	5	5	9	10	6	7	5	5	164	Kagawa
36	Tokushima	9	5	9		10		5	5	5	2	6	9	7	8	7	6	4	6	8	6	7	6	5	135	Tokushima
39	Kochi	14	14	17		17		14	23	9	11	16	16	12	15	5	7	10	10	18	16	9	11	3	267	Kochi
16	Toyama	14	3	6		4		9	10	5	12	5	10	7	7	10	7	6	3	4	9	8	4	3	146	Toyama
31	Tottori	4	7	10		6		4	5	10	9	8	4	6	7	10	6	5	2	8	9	8	10	3	141	Tottori
19	Yamanashi	9	4	8		4		6	8	3	9	5	6	2	4	5	6	6	2	2	6	5	2	1	103	Yamanashi
	total	2,396	2,301	2,366		2,299		2,377	2,390	2,296	2,496	2,455	2,492	2,555	2,481	2,594	2,708	2,654	2,702	2,616	2,716	2,489	2,156	2,270	51,809	total

Data source : <https://anzeninfo.mhlw.go.jp/user/anzen/tok/anst00.htm>

Return to [https://www.jisha.or.jp/english/statistics/202211\\_23.html](https://www.jisha.or.jp/english/statistics/202211_23.html)