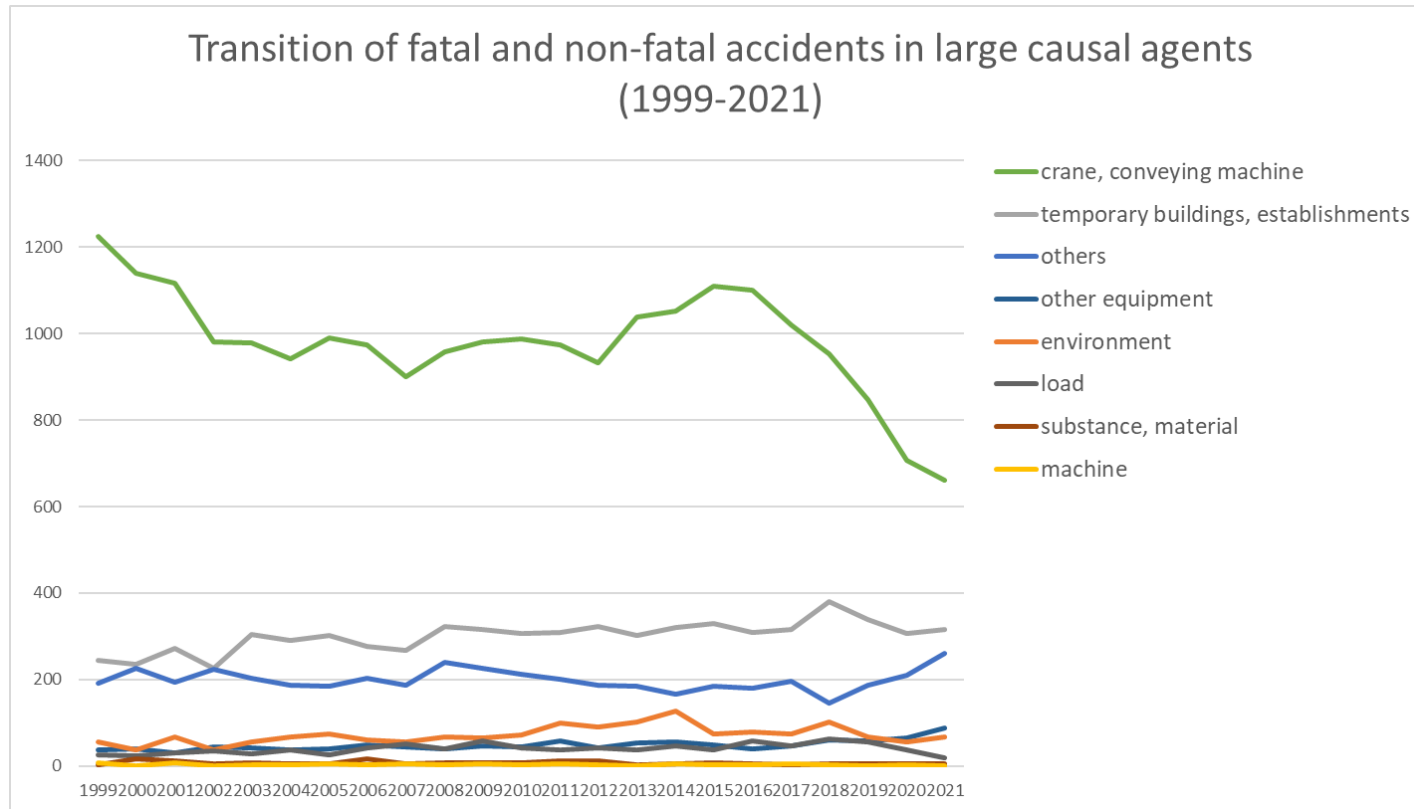
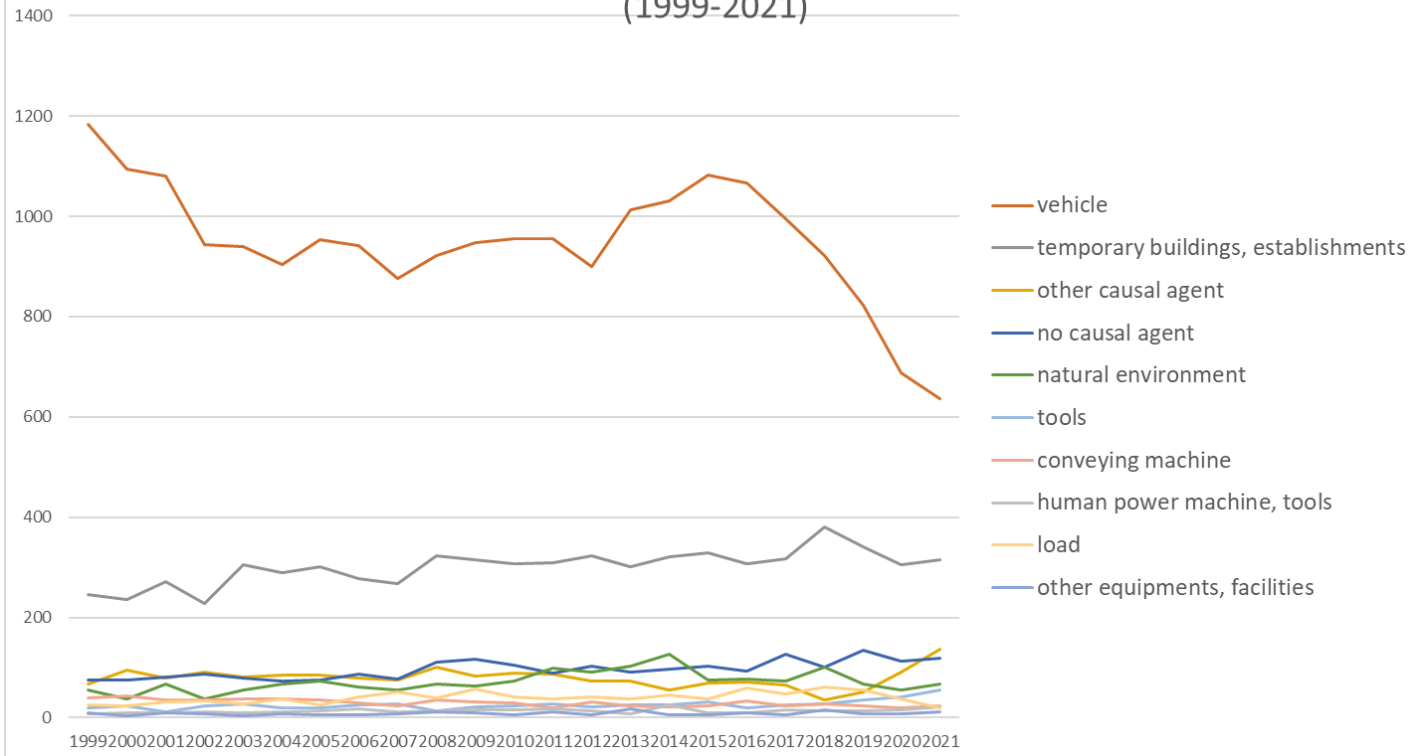


Transition of fatal and non-fatal accidents in each element like as causal agents, type of accidents, etc. in code no. 040201 taxi service (1999-2021)



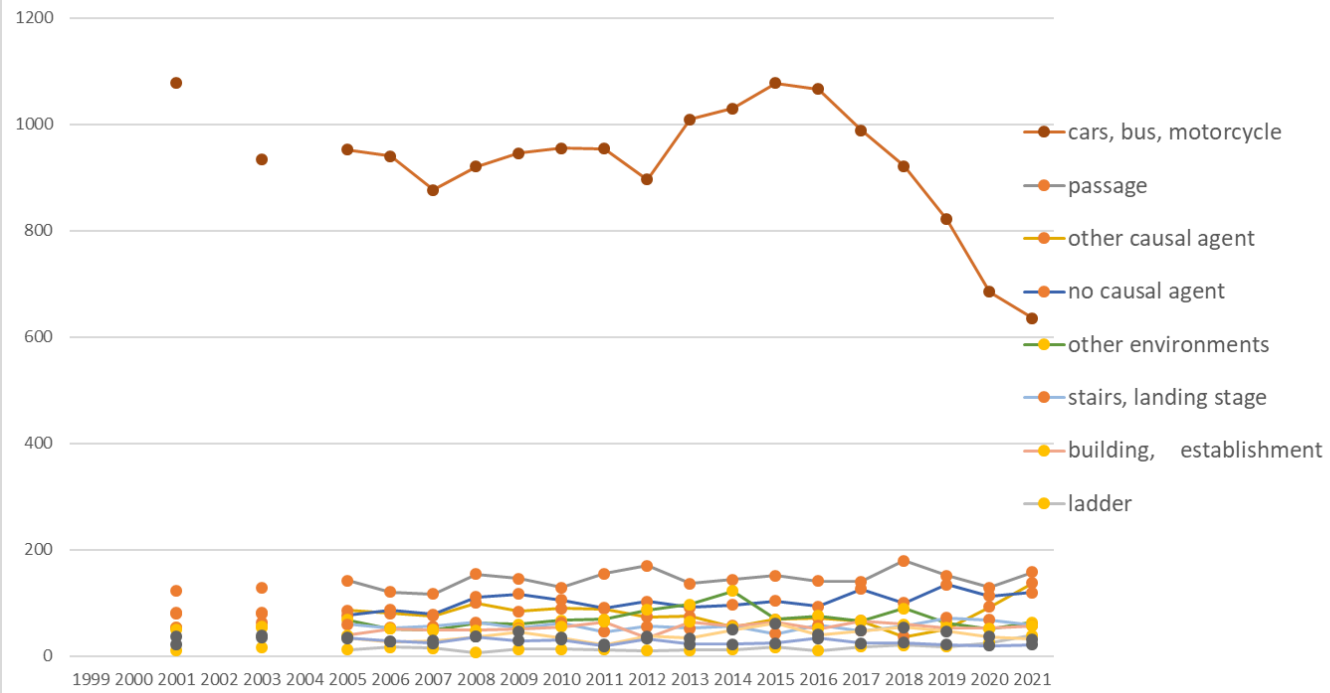
Transition of fatal and non-fatal accidents in large causal agents in code no. 040201 taxi service (1999-2021)

Transition of fatal and non-fatal accidents in top 10 middle causal agents
(1999-2021)



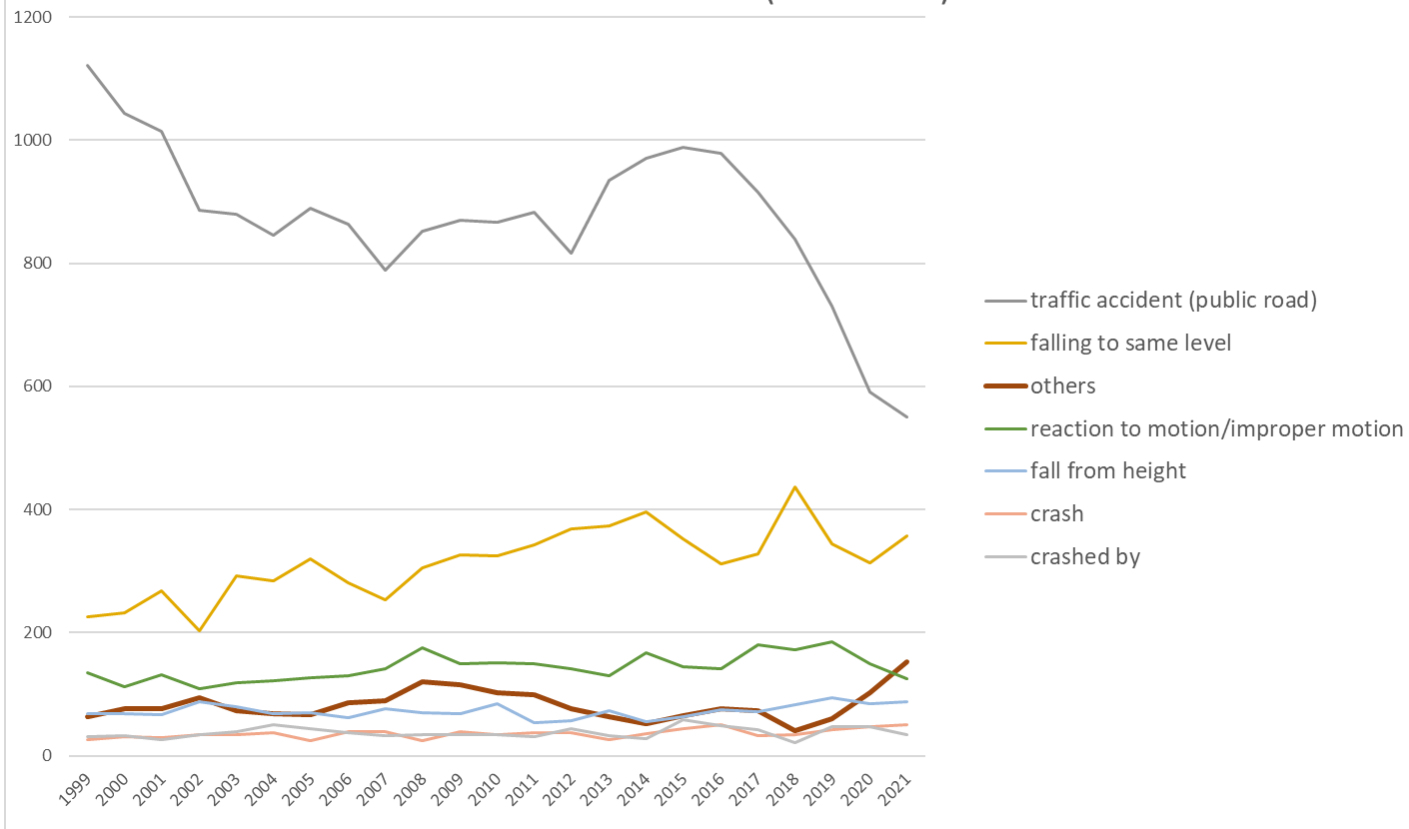
Transition of fatal and non-fatal accidents in middle causal agents in code no. 040201 taxi service (1999-2021)

Transition of fatal and non-fatal accidents in top 10 small causal agents (1999-2021)



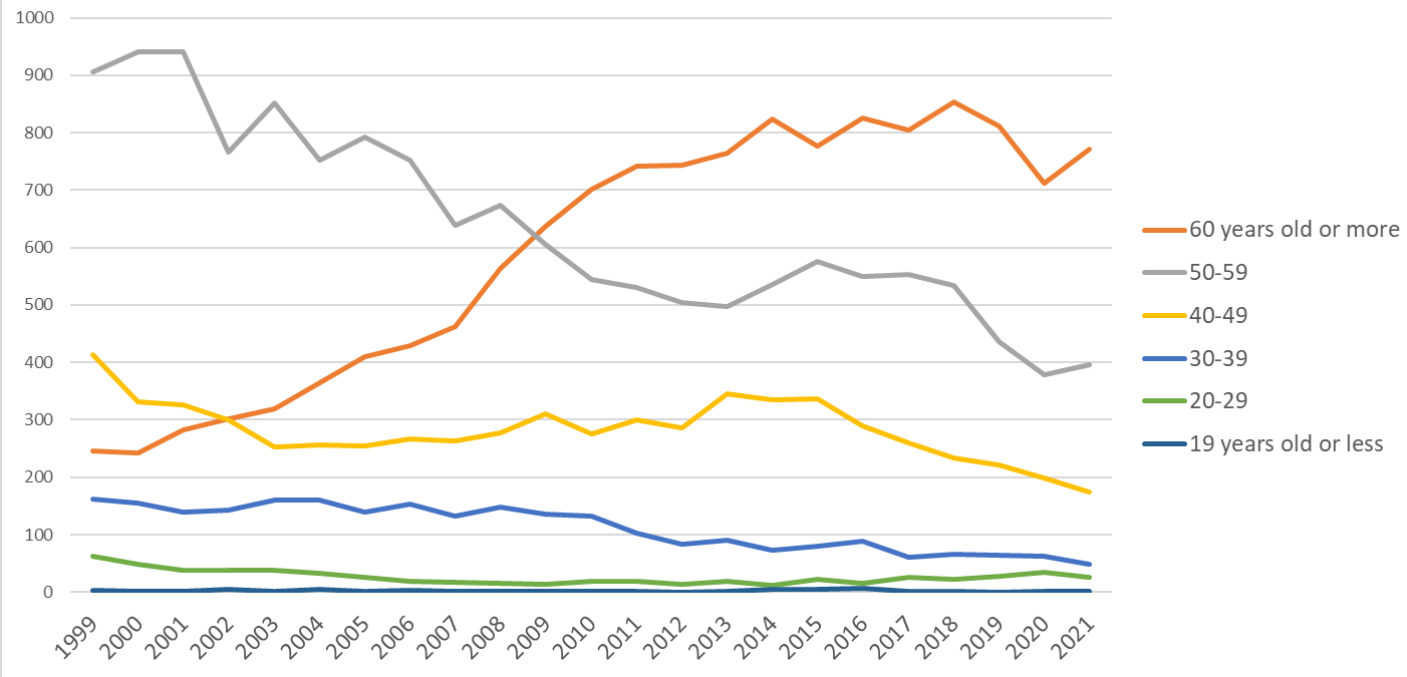
Transition of fatal and non-fatal accidents in small causal agents in code no. 040201 taxi service (1999-2021)

Transition of fatal and non-fatal accidents in top 7 type of accidents
(1999-2021)



Transition of fatal and non-fatal accidents in type of accidents in code no. 040201 taxi service (1999-2021)

Transition of fatal and non-fatal accidents in workers ages (1999-2021)



Transition of fatal and non-fatal accidents in workers ages in code no. 040201 taxi service (1999-2021)

02	falling to same level	226	232	268	203	293	284	320	281	253	306	327	324	342	368	373	396	352	312	328	436	345	314	357	7,240	falling to same level
90	others	64	77	76	94	73	68	67	87	89	120	115	102	100	76	64	52	65	77	73	41	61	102	153	1,896	others
19	reaction to motion/improper motion	135	112	132	109	119	122	127	130	141	175	150	151	150	142	130	168	144	142	181	172	185	149	126	3,292	reaction to motion/improper motion
01	fall from height	68	69	67	88	79	68	70	62	77	70	68	84	54	57	73	55	63	75	71	83	95	84	88	1,668	fall from height
03	crash	26	31	29	34	34	37	24	39	40	24	40	34	37	37	27	36	44	50	33	35	42	47	50	830	crash
06	crashed by	31	33	26	35	40	50	44	38	32	35	34	35	31	44	33	28	59	49	43	22	47	47	34	870	crashed by
07	caught in/between	43	32	44	33	24	28	29	46	36	46	45	39	32	45	41	33	39	38	35	45	32	38	32	855	caught in/between
99	unclassifiable	43	61	37	47	53	39	28	43	36	31	25	17	19	22	28	21	15	28	13	14	4	7	11	642	unclassifiable
04	struck by flying or falling object	9	6	8	4	10	6	4	10	8	8	17	5	11	8	1	8	4	8	4	5	11	1	6	162	struck by flying or falling object
11	contact to high/low-temperature	2	7	6	6	4	11	4	1	7	3	2	6	10	2	3	3	3	3	5	6	4	1	5	104	contact to high/low-temperature
08	cut	12	8	15	5	8	8	11	7	4	7	6	6	11	9	4	6	7	7	2	5	2	3	4	157	cut
12	contact to harmful substance			3		1			7	1							1						1	1	15	contact to harmful substance
16	fire		1	1	1		1		1				1	1							1		1	1	10	fire
18	traffic accident (others)	7	1	2	4	1	1	4	4	1		1	4	3	3	6	1	9	3	1	5	4	2		67	traffic accident (others)
05	collapse		1	1		2	2		3	2		1			2		1	1	1			1	2		20	collapse
09	injury to the sole of the foot	1	2	1	1			1			1	1		2		1					1				12	injury to the sole of the foot

10	drown	1												10												12	drown
14	explosion		2		2						1															6	explosion
15	burst	3		1	1					1																6	burst
13	electric shock					1					1															2	electric shock
	total	1,792	1,718	1,731	1,553	1,622	1,571	1,624	1,624	1,516	1,679	1,702	1,675	1,696	1,632	1,718	1,780	1,794	1,773	1,706	1,710	1,563	1,389	1,418	37,986	total	

Transition of fatal and non-fatal accidents in workers ages in code no. 040201 taxi service (1999-2021)

code	Age	1999	2000	2001	2002	2003	2004	2005	2006	2007	2008	2009	2010	2011	2012	2013	2014	2015	2016	2017	2018	2019	2020	2021	total	Age
6	60 years old or more	245	242	283	302	319	365	410	429	463	564	637	702	741	743	765	823	776	825	805	853	812	712	771	13,587	60 years old or more
5	50-59	906	940	941	766	851	752	792	753	639	673	605	545	531	505	497	535	575	549	553	534	437	379	396	14,654	50-59
4	40-49	414	331	327	300	252	257	254	267	264	277	310	276	300	286	346	334	336	289	260	233	222	199	175	6,509	40-49
3	30-39	162	155	140	142	161	160	140	153	132	148	135	132	103	84	90	73	80	89	61	66	64	63	49	2,582	30-39
2	20-29	62	49	38	38	38	33	26	19	17	15	13	19	19	14	18	11	23	15	26	22	28	35	26	604	20-29
1	19 years old or less	3	1	2	5	1	4	2	3	1	2	2	1	2		2	4	4	6	1	2		1	1	50	19 years old or less
	total	1,792	1,718	1,731	1,553	1,622	1,571	1,624	1,624	1,516	1,679	1,702	1,675	1,696	1,632	1,718	1,780	1,794	1,773	1,706	1,710	1,563	1,389	1,418	37,986	total

Transition of fatal and non-fatal accidents in workers scales in code no. 040201 taxi service (1999-2021)

code	Workers scale	1999	2000	2001	2002	2003	2004	2005	2006	2007	2008	2009	2010	2011	2012	2013	2014	2015	2016	2017	2018	2019	2020	2021	total	Workers scale
5	100-299	874	834	889	763	794	739	775	776	664	722	804	835	858	812	835	957	917	960	855	842	794	680	652	18,631	100-299
4	50-99	297	329	309	280	289	279	277	274	291	290	316	308	321	299	335	292	319	349	357	356	335	264	301	7,067	50-99
6	300 workers or more	368	319	309	287	312	337	341	337	334	411	342	288	259	247	312	286	324	253	264	231	205	229	188	6,783	300 workers or more
3	30-49	105	111	117	104	116	101	111	127	114	128	123	117	113	146	128	136	123	112	105	146	121	110	142	2,756	30-49

2	10-29	95	86	81	89	79	78	99	75	80	95	84	82	109	95	84	80	80	71	95	93	80	80	99	1,989	10-29
1	9 workers or less	53	39	26	30	32	37	21	35	33	33	33	45	36	33	24	29	31	28	30	42	28	26	36	760	9 workers or less
	total	1,792	1,718	1,731	1,553	1,622	1,571	1,624	1,624	1,516	1,679	1,702	1,675	1,696	1,632	1,718	1,780	1,794	1,773	1,706	1,710	1,563	1,389	1,418	37,986	total

Transition of fatal and non-fatal accidents in months in code no. 040201 taxi service (1999-2021)

code	Month	1999	2000	2001	2002	2003	2004	2005	2006	2007	2008	2009	2010	2011	2012	2013	2014	2015	2016	2017	2018	2019	2020	2021	total	Month
1	January	160	162	217	184	204	188	178	169	129	160	189	187	202	175	205	182	180	220	184	241	170	159	167	4,212	January
12	December	154	151	140	131	140	141	188	116	138	153	154	143	132	144	158	169	150	152	168	141	130	110	139	3,342	December
8	August	130	117	121	124	125	111	116	105	111	135	129	145	139	123	99	129	140	130	148	132	126	116	134	2,885	August
3	March	176	157	166	133	152	147	152	154	171	151	163	136	175	143	166	187	173	183	146	185	135	177	128	3,656	March
2	February	194	192	175	126	164	160	171	186	130	188	168	164	177	206	167	223	178	149	145	153	138	178	125	3,857	February
4	April	172	142	142	127	121	122	131	145	130	136	138	134	128	137	150	115	144	186	138	126	127	82	120	3,093	April
11	November	123	122	112	126	112	90	93	106	109	121	103	109	116	118	105	113	148	120	148	131	139	100	117	2,681	November
7	July	156	124	126	122	124	102	126	145	111	140	135	135	123	141	126	132	142	137	109	127	133	114	116	2,946	July
5	May	135	145	141	116	120	118	126	141	131	141	155	128	137	107	144	128	132	115	121	104	118	56	109	2,868	May
10	October	148	126	114	112	117	137	129	122	118	133	124	127	112	120	153	140	135	131	156	109	135	99	96	2,893	October
9	September	110	126	132	123	130	114	107	107	104	103	114	124	132	106	125	110	143	129	130	148	93	106	84	2,700	September
6	June	134	154	145	129	113	141	107	128	134	118	130	143	123	112	120	152	129	121	113	113	119	92	83	2,853	June
	total	1,792	1,718	1,731	1,553	1,622	1,571	1,624	1,624	1,516	1,679	1,702	1,675	1,696	1,632	1,718	1,780	1,794	1,773	1,706	1,710	1,563	1,389	1,418	37,986	total

Transition of fatal and non-fatal accidents in prefectures in code no. 040201 taxi service (1999-2021)

code	Prefecture	1999	2000	2001	2002	2003	2004	2005	2006	2007	2008	2009	2010	2011	2012	2013	2014	2015	2016	2017	2018	2019	2020	2021	total	Prefecture
13	Tokyo	395	354	371		325		311	352	322	426	461	390	459	382	473	506	512	520	488	498	456	445	413	8,859	Tokyo
1	Hokkaido	195	193	225		179		204	178	154	188	167	152	146	156	153	168	155	156	146	142	136	132	137	3,462	Hokkaido
14	Kanagawa	188	143	154		151		177	187	188	187	194	206	195	209	185	178	204	180	195	175	160	125	119	3,700	Kanagawa

27	Osaka	137	155	118		116		112	118	101	116	126	129	125	114	145	132	139	137	112	145	115	110	118	2,620	Osaka
23	Aichi	71	97	95		62		85	94	104	76	106	97	83	90	111	109	103	76	76	85	81	68	78	1,847	Aichi
40	Fukuoka	81	77	84		98		87	67	70	83	80	81	77	60	61	53	69	61	52	45	54	40	68	1,448	Fukuoka
26	Kyoto	129	103	84		107		107	86	65	65	51	77	81	57	67	92	92	100	85	72	68	41	48	1,677	Kyoto
28	Hyogo	84	96	80		65		61	82	58	78	52	58	45	59	63	74	71	56	58	68	61	59	48	1,376	Hyogo
22	Shizuoka	25	32	26		25		15	28	41	29	21	33	46	36	34	52	32	62	74	55	53	65	41	825	Shizuoka
34	Hiroshima	41	40	36		32		34	43	41	26	50	35	28	35	43	24	36	37	27	36	25	22	29	720	Hiroshima
4	Miyagi	13	14	30		18		26	24	20	15	33	20	33	37	27	26	27	35	32	25	19	12	26	512	Miyagi
12	Chiba	33	45	44		45		30	32	42	37	47	44	50	62	35	54	44	51	42	42	59	38	25	901	Chiba
11	Saitama	28	20	21		33		28	26	26	25	20	32	16	26	32	32	37	34	27	25	25	30	23	566	Saitama
43	Kumamoto	16	29	25		16		15	14	8	4	19	15	14	6	14	4	11	12	11	10	12	12	19	286	Kumamoto
33	Okayama	28	27	39		32		22	26	29	19	19	13	20	28	30	25	22	24	23	25	25	15	17	508	Okayama
47	Okinawa	6	5	6		9		13	10	8	18	10	10	10	16	10	15	15	14	14	16	9	15	15	244	Okinawa
2	Aomori	35	15	27		25		14	11	14	14	11	21	8	26	14	12	12	13	14	7	10	8	13	324	Aomori
20	Nagano	14	13	13		10		12	10	13	17	6	23	15	14	22	21	18	17	13	15	16	18	13	313	Nagano
45	Miyazaki	11	13	11		4		7	10	14	14	10	10	10	9	4	9	13	6	12	12	15	14	12	220	Miyazaki
3	Iwate	6	10	13		11		12	10	14	8	1	10	26	6	7	12	9	7	10	11	6	3	12	204	Iwate
42	Nagasaki	5	18	2		15		9	15	15	10	13	14	9	8	12	15	8	12	14	12	8	4	11	229	Nagasaki
17	Ishikawa	9	7	9		9		7	5	14	10	7	14	17	6	8	7	10	2	7	8	9	3	11	179	Ishikawa
15	Niigata	14	18	17		18		18	18	12	23	18	15	19	20	16	9	16	13	13	12	15	8	9	321	Niigata
46	Kagoshima	23	20	9		21		13	13	9	11	13	10	17	7	6	9	11	9	10	13	3	6	9	242	Kagoshima
21	Gifu	16	7	4		12		15	4	13	13	13	17	9	10	7	14	10	11	18	15	13	9	8	238	Gifu
44	Oita	8	6	8		9		9	7	5	6	7	6	6	10	5	9	5	7	3	10	10	9	8	153	Oita
24	Mie	12	16	17		16		19	17	15	13	15	20	15	12	14	10	11	17	9	21	9	8	7	293	Mie
30	Wakayama	25	17	18		10		16	12	11	19	13	8	7	8	11	6	10	6	10	11	7	1	7	233	Wakayama

7	Fukushima	9	7	14		4		8	11	6	12	13	13	7	12	12	15	7	9	7	5	10	4	7	192	Fukushima
38	Ehime	5	9	3		5		4	4		6	7	5	3	6	2	5	6	3	6	3	3	4	7	96	Ehime
35	Yamaguchi	8	6	4		13		15	4	3	6	2	9	8	7	5	3	8	3	6	7	9	5	6	137	Yamaguchi
8	Ibaraki	22	21	24		17		18	12	12	11	14	12	13	18	19	17	16	13	10	10	5	4	5	293	Ibaraki
10	Gunma	22	14	15		17		11	17	7	7	12	8	6	6	11	7	4	9	6	1	4	3	5	192	Gunma
5	Akita	5	5	9		5		6	8	4	13	11	8	7	17	2	9	5	4	2	9	3	5	5	142	Akita
29	Nara	6	8	9		9		10	3	5	7	9	2	4	2	5	3	12	13	9	6	5	9	5	141	Nara
9	Tochigi	6	9	8		6		16	11	4	9	5	7	1	3	6	7	4	4	9	6	4	8	5	138	Tochigi
25	Shiga	10	8	8		13		7	4	6	2	3	5	5	6	9	5	3	7	4	5	8	3	5	126	Shiga
6	Yamagata	6	2	10		8		9	5	1	8	5	6	9	8	4	5	3	2	8	5	4	1	5	114	Yamagata
32	Shimane		5	4		10		4	2	6	8	5	3	8	10	7	5	2	5	5	6	5	1	5	106	Shimane
18	Fukui	5	2	2		3		2	4	7	7	2	5	9	1	4	5	1	5	9	5	6	3	3	90	Fukui
41	Saga	5	5	4		8		13	1	6	4	5	3	5	6	5	2	2	1	5	3	1	2	3	89	Saga
37	Kagawa	8	9	3		5		2	8	5	4	2	3	4	5	3	2	3	5	4	2	1		3	81	Kagawa
36	Tokushima	4	2	4		6		3	2	4	1	3	4	5	3	4	3	1	5	4	3	1	1	2	65	Tokushima
39	Kochi	9	8	8		13		10	15	4	8	10	11	8	8	2	2	5	7	9	10	6	8	1	162	Kochi
31	Tottori	4	5	6		2		2	4	5	3	5	3	3	3	4	4	3	2	6	6	6	5	1	82	Tottori
16	Toyama	6		4		4		5	6	4	6	3	4	3	2	3	2	3	1	2	5	2	3	1	69	Toyama
19	Yamanashi	4	3	6		1		1	4	1	7	3	4	2		2	2	4			2	1			47	Yamanashi
	total	1,792	1,718	1,731		1,622		1,624	1,624	1,516	1,679	1,702	1,675	1,696	1,632	1,718	1,780	1,794	1,773	1,706	1,710	1,563	1,389	1,418	34,862	total

Data source : <https://anzeninfo.mhlw.go.jp/user/anzen/tok/anst00.htm>

Return to https://www.jisha.or.jp/english/statistics/202211_23.html