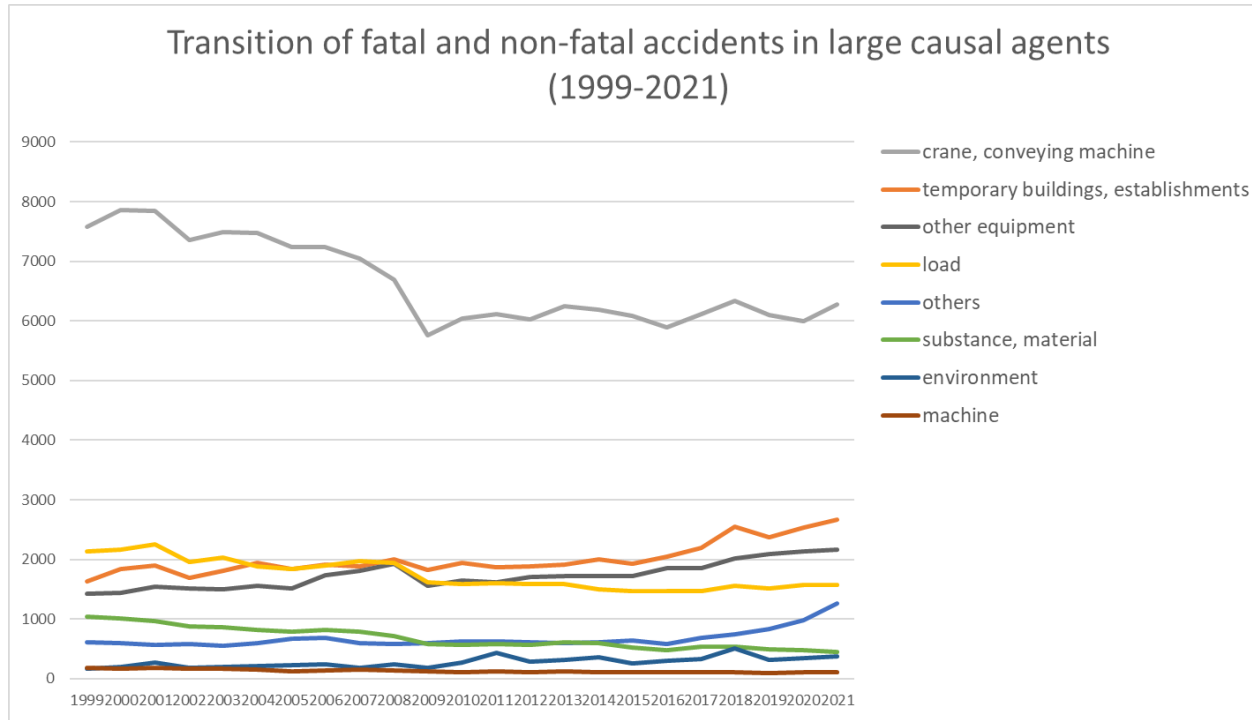
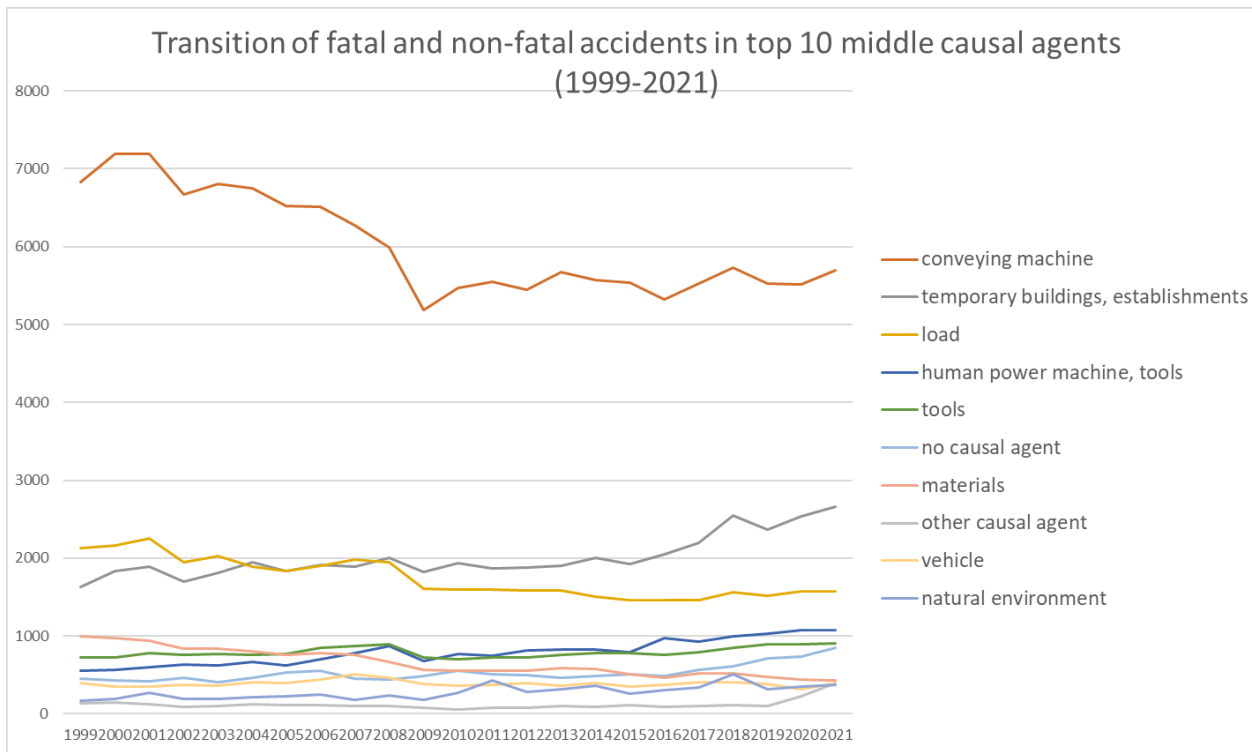


Transition of fatal and non-fatal accidents in each element like as causal agents, type of accidents, etc. in code no. 0403 road cargo transportation service (1999-2021)

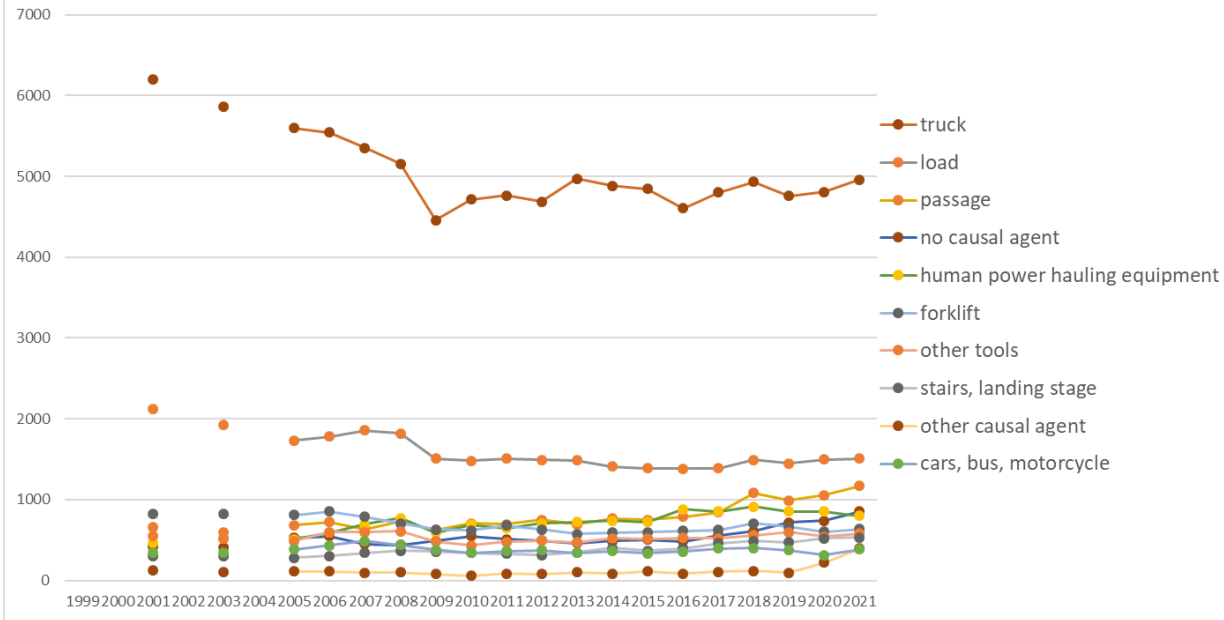


Transition of fatal and non-fatal accidents in large causal agents in code no. 0403 road cargo transportation service (1999-2021)



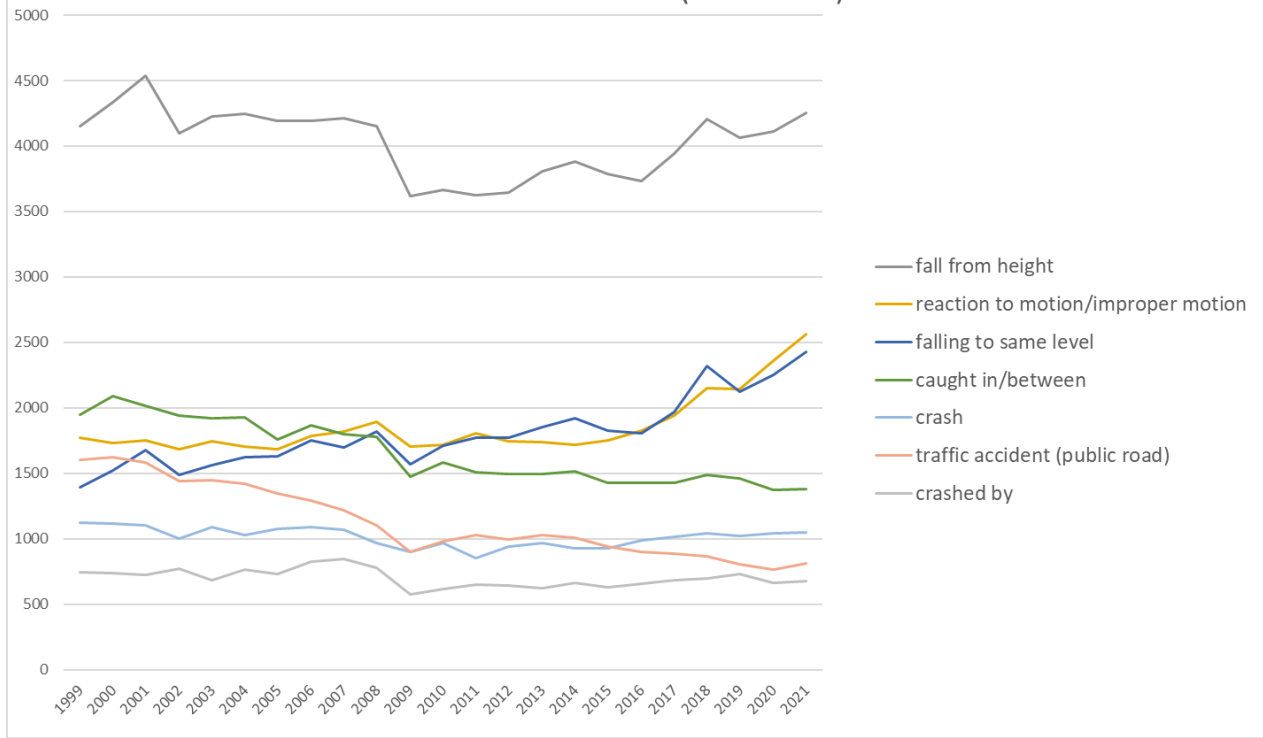
Transition of fatal and non-fatal accidents in middle causal agents in code no. 0403 road cargo transportation service (1999-2021)

Transition of fatal and non-fatal accidents in top 10 small causal agents
(1999-2021)



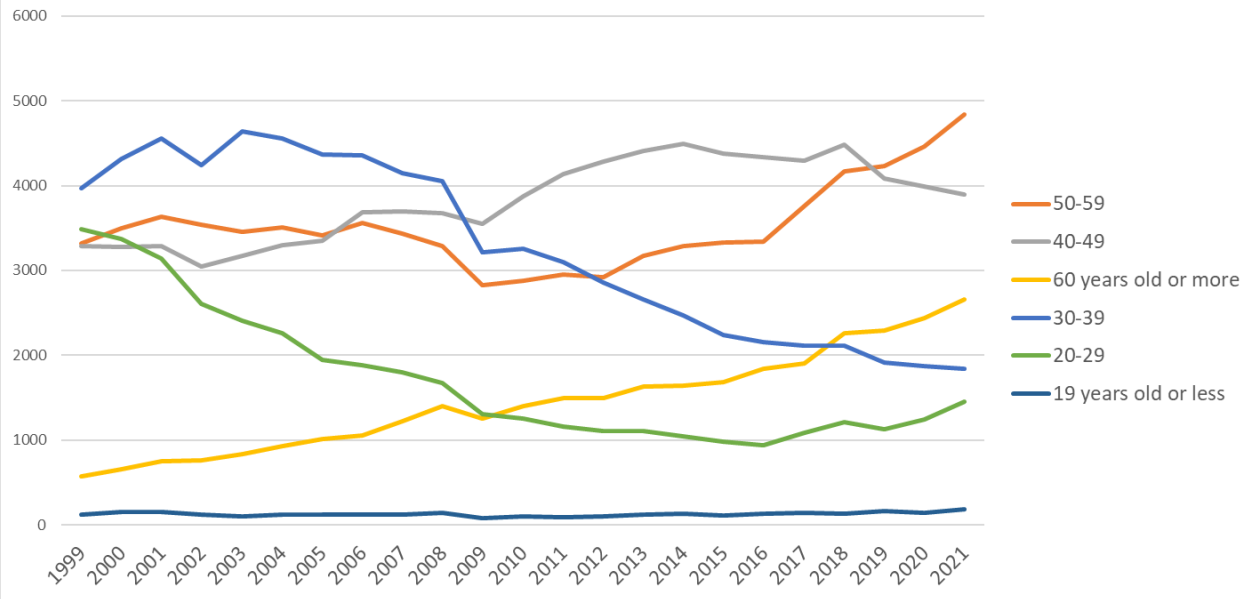
Transition of fatal and non-fatal accidents in small causal agents in code no. 0403 road cargo transportation service (1999-2021)

Transition of fatal and non-fatal accidents in top 7 type of accidents (1999-2021)



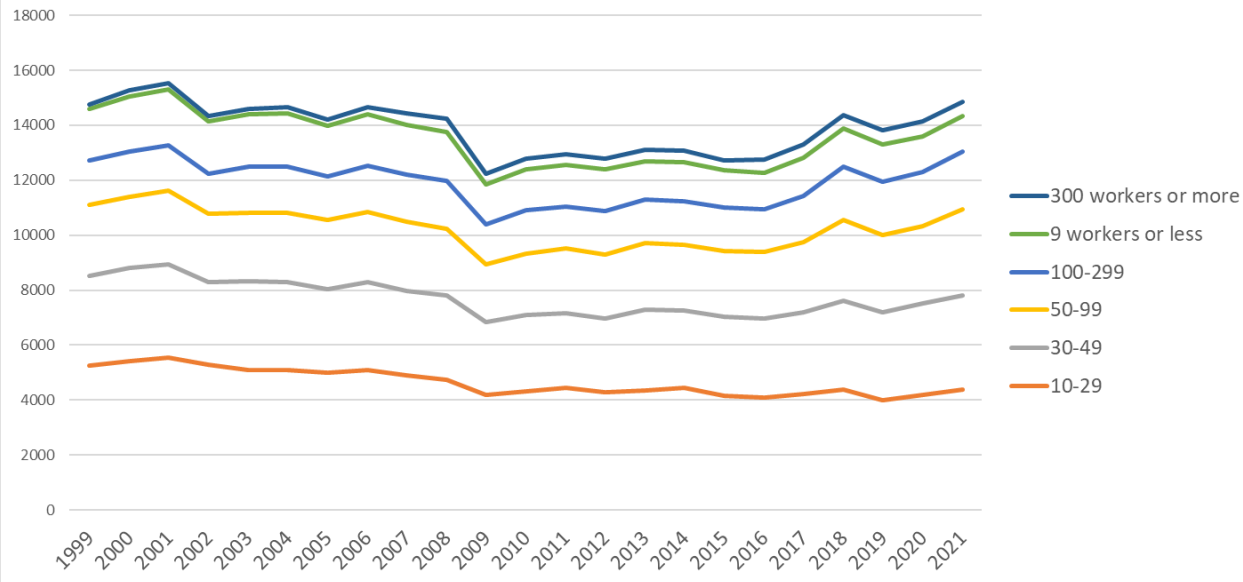
Transition of fatal and non-fatal accidents in type of accidents in code no. 0403 road cargo transportation service (1999-2021)

Transition of fatal and non-fatal accidents in workers ages (1999-2021)



Transition of fatal and non-fatal accidents in workers ages in code no. 0403 road cargo transportation service (1999-2021)

Transition of fatal and non-fatal accidents in workers scales (1999-2021)



Transition of fatal and non-fatal accidents in workers scales in code no. 0403 road cargo transportation service (1999-2021)

07	caught in/between	1,945	2,089	2,018	1,939	1,922	1,927	1,756	1,866	1,801	1,776	1,475	1,583	1,511	1,494	1,496	1,514	1,425	1,426	1,430	1,485	1,463	1,375	1,383	38,099	caught in/between
03	crash	1,121	1,119	1,101	1,002	1,092	1,032	1,075	1,088	1,067	968	897	969	850	941	966	928	930	988	1,014	1,043	1,021	1,039	1,047	23,298	crash
17	traffic accident (public road)	1,604	1,621	1,583	1,440	1,451	1,423	1,343	1,292	1,219	1,104	900	981	1,029	997	1,026	1,006	944	900	889	864	804	767	809	25,996	traffic accident (public road)
06	crashed by	746	741	722	774	686	763	731	823	845	777	577	619	650	645	626	664	632	657	685	697	729	663	680	16,132	crashed by
04	struck by flying or falling object	1,124	1,066	1,113	1,008	958	1,000	913	979	848	845	714	686	730	722	729	717	658	688	664	681	611	612	614	18,680	struck by flying or falling object
90	others	41	55	45	45	50	72	52	49	51	61	67	58	93	59	57	42	73	61	71	72	74	209	399	1,856	others
05	collapse	523	562	540	491	546	538	481	495	510	499	429	462	417	432	444	373	394	368	383	423	428	382	397	10,517	collapse
08	cut	196	228	240	193	205	176	182	184	176	176	172	169	159	145	185	148	127	156	137	157	145	143	141	3,940	cut
11	contact to high/low-temperature	57	65	78	75	61	62	71	58	64	75	48	99	92	89	95	77	92	72	101	198	134	158	88	2,009	contact to high/low-temperature
09	injury to the sole of the foot	18	30	30	16	26	28	21	28	32	16	14	13	17	18	21	24	24	20	19	25	21	21	17	499	injury to the sole of the foot
12	contact to harmful substance	18	31	21	29	20	19	24	16	17	30	19	19	16	16	17	12	14	11	16	18	17	27	17	444	contact to harmful substance
99	unclassifiable	23	15	30	27	30	17	26	27	29	27	14	13	25	31	22	26	22	21	25	21	19	11	8	509	unclassifiable
18	traffic accident (others)	15	16	13	5	5	8	7	7	11	6	3	5	7	11	6	9	11	6	7	9	9	5	8	189	traffic accident (others)
15	burst	6	10	16	4	10	12	9	9	11	4	4	6	4	5	4	8	3	6	4	2	6	6	5	154	burst
14	explosion	5	5	2	2	7	5	4	5	5	4	2	4	3		1	1	2		4	2	5	2	4	74	explosion
13	electric shock	2	4	2	3	3		3	1	1	1	3	2	2	1	1	3	2	1	1		1	2	4	43	electric shock
16	fire	3	10	4	2	4	5	4	4	4	2	3	1		2	2	5	4		1	2	1	1	2	66	fire
10	drown	1			2	2	1	1	2		1	1	1	121	1			2				3			139	drown
	total	14,765	15,259	15,518	14,327	14,610	14,661	14,210	14,666	14,425	14,237	12,238	12,782	12,936	12,771	13,094	13,073	12,720	12,747	13,308	14,376	13,821	14,153	14,869	319,566	total

Transition of fatal and non-fatal accidents in workers ages in code no. 0403 road cargo transportation service (1999-2021)

code	Age	1999	2000	2001	2002	2003	2004	2005	2006	2007	2008	2009	2010	2011	2012	2013	2014	2015	2016	2017	2018	2019	2020	2021	total	Age
5	50-59	3,315	3,497	3,634	3,541	3,450	3,507	3,417	3,557	3,439	3,285	2,824	2,883	2,955	2,922	3,168	3,287	3,332	3,340	3,764	4,170	4,231	4,459	4,839	80,816	50-59
4	40-49	3,289	3,273	3,287	3,045	3,175	3,299	3,351	3,684	3,692	3,679	3,552	3,879	4,140	4,282	4,411	4,495	4,380	4,332	4,296	4,482	4,089	3,991	3,893	87,996	40-49
6	60 years old or more	573	659	752	766	837	927	1,012	1,052	1,227	1,403	1,257	1,402	1,492	1,499	1,634	1,641	1,683	1,841	1,904	2,259	2,297	2,440	2,657	33,214	60 years old or more
3	30-39	3,972	4,313	4,553	4,245	4,636	4,552	4,367	4,359	4,146	4,056	3,216	3,254	3,099	2,863	2,659	2,474	2,236	2,155	2,116	2,117	1,912	1,868	1,839	75,007	30-39
2	20-29	3,491	3,367	3,137	2,603	2,410	2,256	1,945	1,886	1,796	1,675	1,303	1,257	1,158	1,108	1,104	1,045	979	945	1,086	1,212	1,125	1,248	1,458	39,594	20-29
1	19 years old or less	125	150	155	127	102	120	118	128	125	139	86	107	92	97	118	131	110	134	142	136	167	147	183	2,939	19 years old or less
	total	14,765	15,259	15,518	14,327	14,610	14,661	14,210	14,666	14,425	14,237	12,238	12,782	12,936	12,771	13,094	13,073	12,720	12,747	13,308	14,376	13,821	14,153	14,869	319,566	total

Transition of fatal and non-fatal accidents in workers scales in code no. 0403 road cargo transportation service (1999-2021)

code	Workers scale	1999	2000	2001	2002	2003	2004	2005	2006	2007	2008	2009	2010	2011	2012	2013	2014	2015	2016	2017	2018	2019	2020	2021	total	Workers scale
2	10-29	5,252	5,404	5,545	5,278	5,094	5,106	5,005	5,104	4,906	4,754	4,182	4,305	4,434	4,293	4,358	4,461	4,147	4,105	4,234	4,378	3,992	4,196	4,395	106,928	10-29
3	30-49	3,256	3,395	3,380	3,010	3,223	3,200	3,042	3,184	3,067	3,042	2,661	2,794	2,741	2,667	2,940	2,810	2,893	2,872	2,971	3,233	3,187	3,317	3,417	70,302	30-49
4	50-99	2,606	2,593	2,689	2,483	2,494	2,502	2,508	2,574	2,527	2,444	2,085	2,243	2,337	2,344	2,416	2,371	2,370	2,404	2,529	2,944	2,834	2,801	3,138	58,236	50-99
5	100-299	1,603	1,642	1,666	1,477	1,674	1,672	1,569	1,677	1,718	1,748	1,471	1,564	1,533	1,563	1,583	1,587	1,597	1,557	1,689	1,940	1,927	1,975	2,105	38,537	100-299
1	9 workers or less	1,869	2,025	2,019	1,881	1,921	1,942	1,849	1,855	1,781	1,773	1,450	1,482	1,524	1,533	1,392	1,438	1,344	1,341	1,383	1,375	1,355	1,290	1,294	37,116	9 workers or less
6	300 workers or more	179	200	219	198	204	239	237	272	426	476	389	394	367	371	405	406	369	468	502	506	526	574	520	8,447	300 workers or more
	total	14,765	15,259	15,518	14,327	14,610	14,661	14,210	14,666	14,425	14,237	12,238	12,782	12,936	12,771	13,094	13,073	12,720	12,747	13,308	14,376	13,821	14,153	14,869	319,566	total

Transition of fatal and non-fatal accidents in months in code no. 0403 road cargo transportation service (1999-2021)

code	Month	1999	2000	2001	2002	2003	2004	2005	2006	2007	2008	2009	2010	2011	2012	2013	2014	2015	2016	2017	2018	2019	2020	2021	total	Month
12	December	1,261	1,243	1,261	1,307	1,216	1,153	1,356	1,192	1,232	1,109	1,022	1,138	1,127	1,088	1,131	1,148	1,026	1,113	1,171	1,189	1,158	1,284	1,371	27,296	December
3	March	1,310	1,415	1,500	1,234	1,333	1,384	1,395	1,376	1,348	1,330	1,139	1,214	1,237	1,172	1,152	1,244	1,123	1,111	1,189	1,253	1,186	1,206	1,356	29,207	March
8	August	1,240	1,309	1,228	1,137	1,129	1,252	1,116	1,189	1,245	1,170	950	1,057	1,095	1,075	1,082	1,022	1,068	1,006	1,102	1,172	1,222	1,179	1,305	26,350	August

1	January	1,137	1,123	1,343	1,152	1,160	1,159	1,070	1,244	1,023	1,131	1,005	1,023	1,069	1,059	1,071	1,078	1,050	1,080	1,110	1,297	1,035	1,069	1,287	25,775	January
9	September	1,334	1,366	1,281	1,114	1,249	1,166	1,152	1,176	1,193	1,162	969	1,049	1,094	1,018	1,120	1,015	1,084	1,068	1,067	1,250	1,157	1,159	1,254	26,497	September
7	July	1,334	1,284	1,310	1,338	1,310	1,291	1,310	1,261	1,205	1,366	1,151	1,187	1,163	1,061	1,213	1,212	1,207	1,138	1,141	1,355	1,331	1,251	1,250	28,669	July
2	February	1,215	1,254	1,337	1,091	1,159	1,246	1,116	1,227	1,143	1,232	1,022	1,037	941	1,130	1,037	1,250	989	987	1,103	1,209	1,105	1,150	1,241	26,221	February
6	June	1,243	1,257	1,281	1,184	1,198	1,289	1,215	1,213	1,232	1,143	1,010	1,052	1,131	1,041	1,016	1,051	1,089	1,038	1,075	1,166	1,068	1,292	1,194	26,478	June
4	April	1,215	1,294	1,282	1,145	1,217	1,202	1,178	1,185	1,209	1,211	1,059	1,030	1,055	1,038	1,050	995	1,054	1,100	1,054	1,106	1,192	1,130	1,187	26,188	April
10	October	1,215	1,259	1,303	1,242	1,263	1,284	1,177	1,232	1,250	1,158	1,056	1,088	1,052	1,062	1,184	1,091	1,042	1,104	1,213	1,228	1,157	1,316	1,155	27,131	October
11	November	1,169	1,291	1,212	1,218	1,198	1,204	1,100	1,214	1,164	1,047	986	1,014	1,021	1,069	1,043	1,017	1,041	1,028	1,085	1,120	1,106	1,093	1,146	25,586	November
5	May	1,092	1,164	1,180	1,165	1,178	1,031	1,025	1,157	1,181	1,178	869	893	951	958	995	950	947	974	998	1,031	1,104	1,024	1,123	24,168	May
	total	14,765	15,259	15,518	14,327	14,610	14,661	14,210	14,666	14,425	14,237	12,238	12,782	12,936	12,771	13,094	13,073	12,720	12,747	13,308	14,376	13,821	14,153	14,869	319,566	total

Transition of fatal and non-fatal accidents in prefectures in code no. 0403 road cargo transportation service (1999-2021)

code	Prefecture	1999	2000	2001	2002	2003	2004	2005	2006	2007	2008	2009	2010	2011	2012	2013	2014	2015	2016	2017	2018	2019	2020	2021	total	Prefecture
27	Osaka	1,464	1,383	1,498		1,379		1,273	1,350	1,290	1,266	1,053	1,136	1,084	1,106	1,068	1,031	1,081	1,018	1,081	1,216	1,177	1,178	1,193	25,325	Osaka
11	Saitama	711	722	851		838		858	922	951	921	853	849	867	886	860	890	949	931	926	1,030	1,042	1,064	1,129	19,050	Saitama
13	Tokyo	1,085	1,083	1,162		1,090		1,039	1,063	993	1,077	933	958	900	943	951	858	836	901	917	949	937	855	970	20,500	Tokyo
23	Aichi	980	1,012	993		1,010		868	945	906	845	693	760	768	782	818	764	790	754	842	892	907	934	892	18,155	Aichi
14	Kanagawa	716	829	768		693		707	707	789	827	660	703	663	687	672	735	709	694	729	784	749	782	812	15,415	Kanagawa
1	Hokkaido	916	1,008	974		907		868	968	826	744	721	720	745	740	812	805	706	732	777	795	725	775	803	17,067	Hokkaido
40	Fukuoka	756	717	756		780		653	711	680	673	591	646	609	614	602	646	590	638	683	713	704	756	773	14,291	Fukuoka
12	Chiba	539	620	714		579		636	614	617	685	602	621	624	612	635	647	635	633	634	681	674	792	766	13,560	Chiba
28	Hyogo	639	642	603		566		563	567	609	627	497	456	520	526	534	499	541	476	555	594	540	532	545	11,631	Hyogo
22	Shizuoka	521	592	520		519		484	518	524	531	427	509	447	453	438	474	447	464	454	466	456	493	479	10,216	Shizuoka
34	Hiroshima	479	421	439		451		408	445	429	421	346	368	379	348	401	338	357	310	365	359	374	373	421	8,232	Hiroshima
8	Ibaraki	355	389	400		371		372	387	362	363	298	351	404	327	371	352	346	332	364	362	333	365	392	7,596	Ibaraki
4	Miyagi	346	334	308		318		314	344	270	301	258	263	386	285	276	331	278	292	313	332	338	305	373	6,565	Miyagi
33	Okayama	247	259	275		245		244	229	285	286	223	215	262	271	270	257	265	252	283	321	293	273	327	5,582	Okayama
15	Niigata	245	260	265		215		222	230	208	202	197	237	233	216	230	219	190	219	219	280	222	223	320	4,852	Niigata

26	Kyoto	254	283	273		237		275	266	253	219	219	197	242	209	239	253	271	244	268	288	240	289	306	5,325	Kyoto
10	Gunma	322	333	364		317		315	321	317	279	241	262	276	253	258	283	255	295	274	292	289	299	303	6,148	Gunma
24	Mie	258	256	272		240		256	306	270	256	238	204	199	232	245	232	224	224	221	230	234	245	265	5,107	Mie
9	Tochigi	241	225	244		223		211	192	221	219	208	197	164	201	189	197	180	175	189	222	201	228	245	4,372	Tochigi
7	Fukushima	236	258	233		217		214	211	179	209	185	196	191	222	225	212	170	195	183	196	183	208	205	4,328	Fukushima
20	Nagano	129	127	163		153		145	115	155	151	112	128	122	129	112	153	132	133	156	183	169	154	200	3,021	Nagano
21	Gifu	224	257	230		237		233	227	187	195	176	172	179	172	190	163	191	174	187	178	188	161	193	4,114	Gifu
46	Kagoshima	199	210	202		185		226	209	219	203	163	174	176	168	188	190	177	175	161	187	178	194	193	3,977	Kagoshima
2	Aomori	120	118	146		117		105	84	136	120	102	99	107	127	119	110	108	111	114	128	117	125	165	2,478	Aomori
38	Ehime	197	203	195		200		170	223	215	177	157	194	159	164	148	156	152	164	171	152	168	157	161	3,683	Ehime
43	Kumamoto	196	226	204		201		194	244	207	228	182	171	180	157	193	168	158	181	172	214	190	197	157	4,020	Kumamoto
37	Kagawa	155	177	194		168		166	145	184	162	124	130	133	130	139	107	124	152	147	149	144	146	156	3,132	Kagawa
41	Saga	128	145	132		142		149	142	142	118	106	137	121	128	152	156	133	114	122	142	164	158	149	2,880	Saga
45	Miyazaki	133	113	130		122		154	120	144	120	118	115	107	106	104	134	127	120	114	133	135	127	147	2,623	Miyazaki
25	Shiga	178	156	174		172		149	163	148	172	126	146	137	156	166	147	139	162	125	155	127	136	138	3,172	Shiga
29	Nara	88	91	93		106		123	158	156	136	141	135	132	145	156	170	126	133	128	141	139	125	136	2,758	Nara
17	Ishikawa	125	152	149		142		128	136	129	113	126	137	119	100	114	104	115	107	127	128	119	141	132	2,643	Ishikawa
6	Yamagata	103	106	89		84		91	124	104	113	90	79	106	91	86	89	96	73	90	107	88	84	127	2,020	Yamagata
3	Iwate	156	133	172		122		132	145	128	119	86	102	139	123	138	149	142	121	128	142	132	98	123	2,730	Iwate
42	Nagasaki	135	125	113		150		130	100	120	106	102	106	121	102	102	112	97	105	78	114	128	137	117	2,400	Nagasaki
35	Yamaguchi	175	186	181		146		140	144	125	149	118	103	114	88	112	104	92	120	95	135	116	114	113	2,670	Yamaguchi
44	Oita	128	122	108		111		124	104	118	103	96	93	87	77	73	90	69	93	84	107	100	105	112	2,104	Oita
16	Toyama	173	170	185		170		157	135	131	133	115	109	122	116	111	128	114	102	155	123	130	122	110	2,811	Toyama
36	Tokushima	82	108	80		94		88	92	91	92	61	73	66	76	70	67	91	79	57	88	75	77	96	1,703	Tokushima
19	Yamanashi	57	62	73		66		65	51	63	65	52	49	53	66	66	62	55	57	73	90	74	79	96	1,374	Yamanashi
5	Akita	104	105	97		74		63	80	88	73	72	88	81	68	66	83	68	79	71	110	81	84	95	1,730	Akita
18	Fukui	129	115	133		108		113	116	103	103	62	73	99	69	86	91	68	78	83	79	97	99	90	1,994	Fukui
30	Wakayama	99	123	139		121		130	118	127	137	104	103	111	104	93	99	116	114	109	127	106	102	89	2,371	Wakayama

47	Okinawa	19	38	21		30		46	23	37	35	35	51	48	44	58	43	56	62	81	62	72	85	81	1,027	Okinawa
39	Kochi	99	111	93		83		91	82	73	74	66	68	67	66	78	76	64	72	98	85	73	84	70	1,673	Kochi
31	Tottori	51	75	32		53		57	39	59	37	49	46	50	39	35	48	37	49	50	70	47	44	53	1,020	Tottori
32	Shimane	73	79	78		58		61	51	57	52	54	53	37	47	45	51	53	38	55	45	46	49	51	1,133	Shimane
	total	14,765	15,259	15,518		14,610		14,210	14,666	14,425	14,237	12,238	12,782	12,936	12,771	13,094	13,073	12,720	12,747	13,308	14,376	13,821	14,153	14,869	290,578	total

Data source : <https://anzeninfo.mhlw.go.jp/user/anzen/tok/anst00.htm>

Return to https://www.jisha.or.jp/english/statistics/202211_23.html