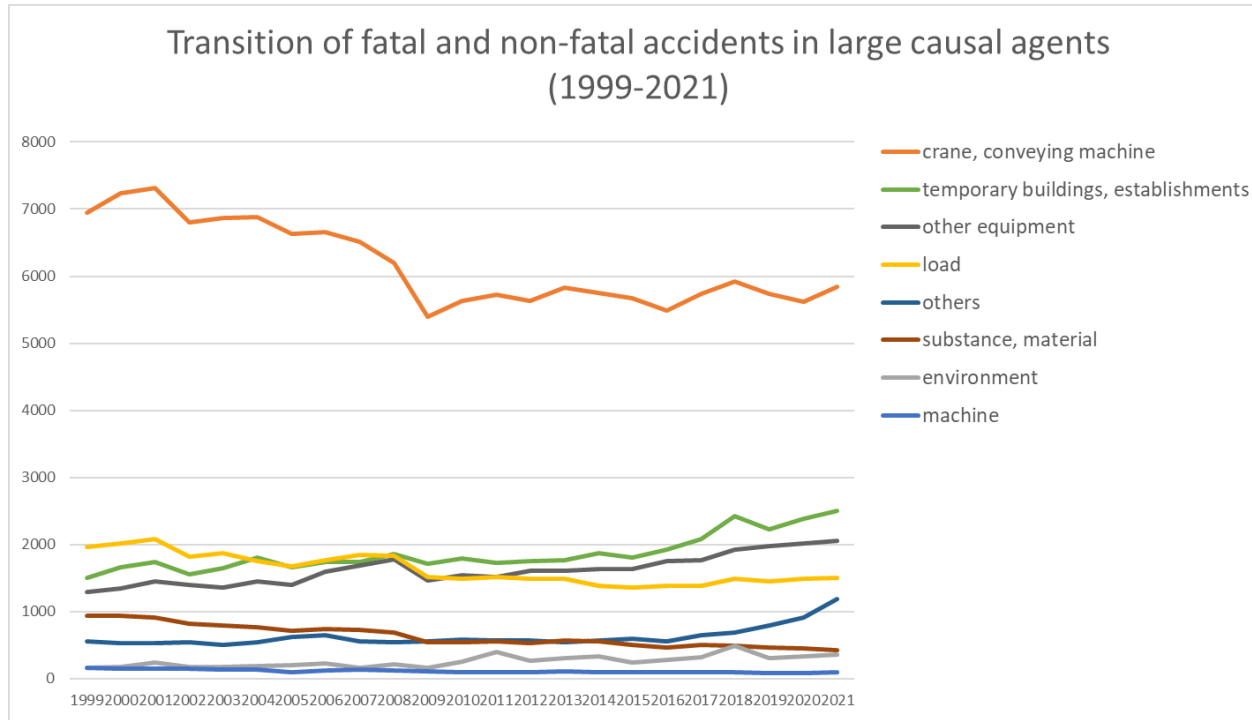
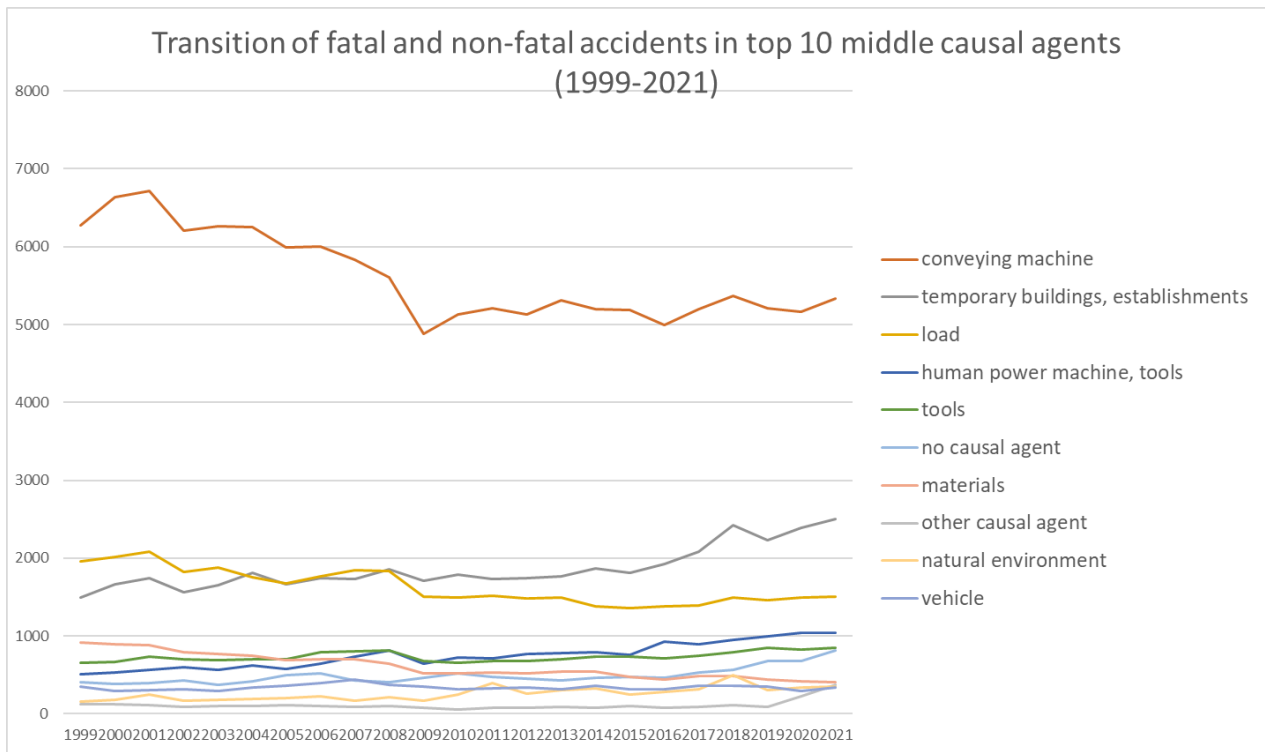


Transition of fatal and non-fatal accidents in each element like as causal agents, type of accidents, etc. in code no. 040301 general truck transportation service (1999-2021)

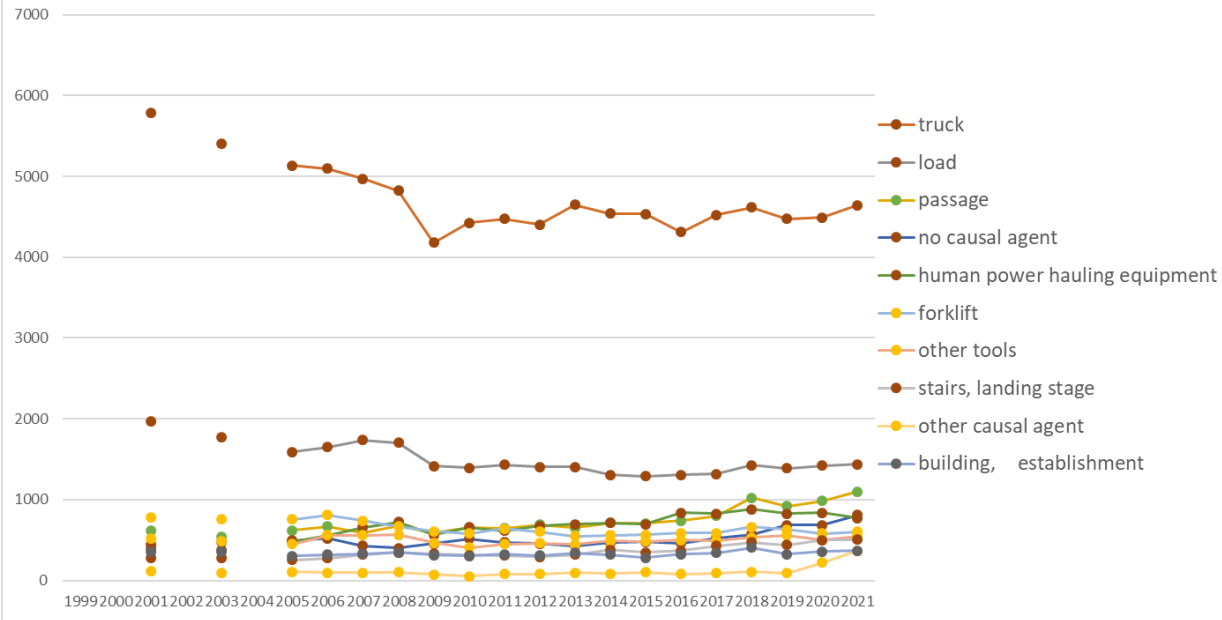


Transition of fatal and non-fatal accidents in large causal agents in code no. 040301 general truck transportation service (1999-2021)



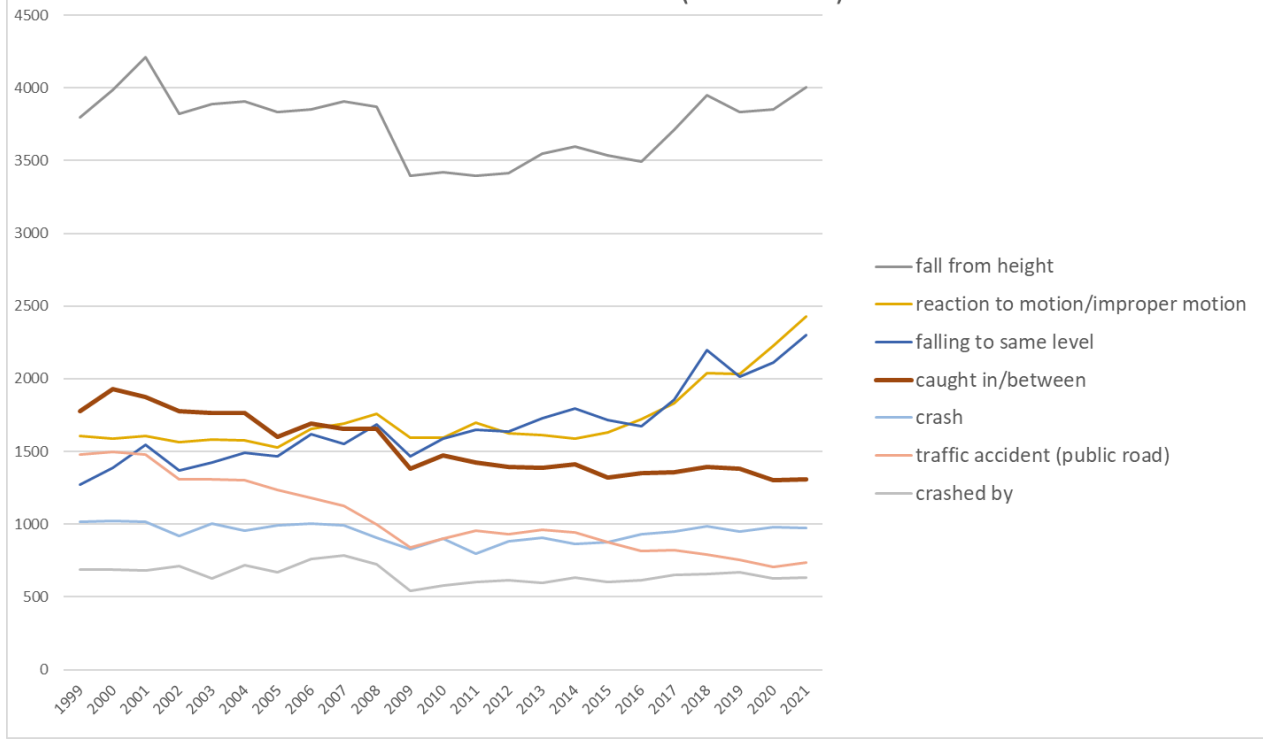
Transition of fatal and non-fatal accidents in middle causal agents in code no. 040301 general truck transportation service (1999-2021)

### Transition of fatal and non-fatal accidents in top 10 small causal agents (1999-2021)



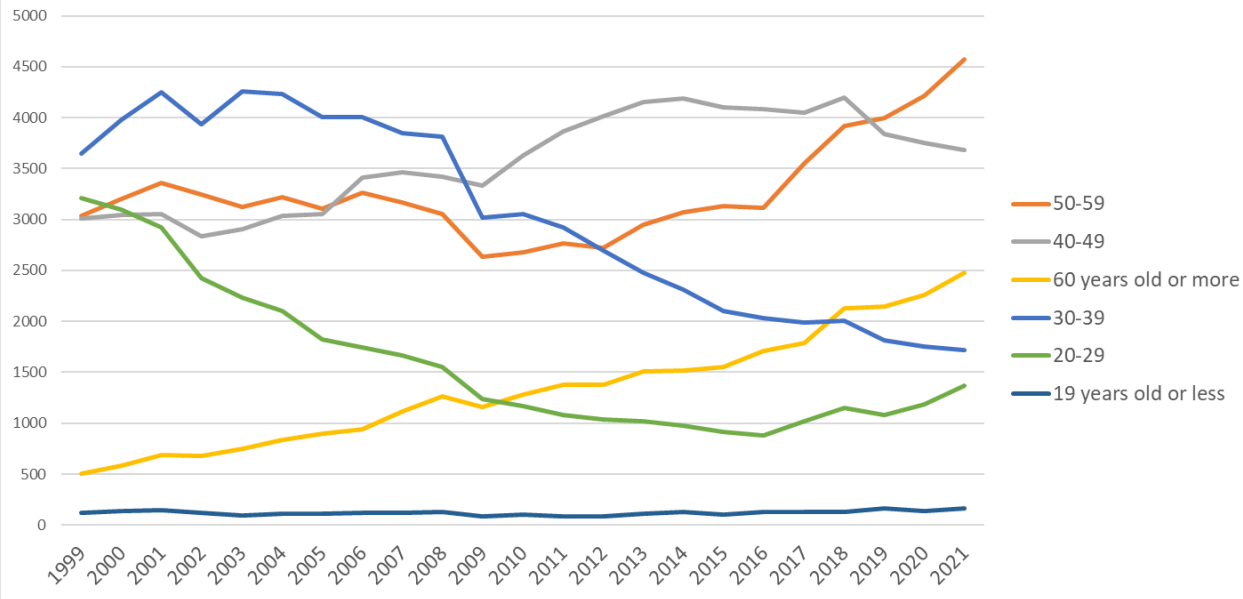
Transition of fatal and non-fatal accidents in small causal agents in code no. 040301 general truck transportation service (1999-2021)

Transition of fatal and non-fatal accidents in top 7 type of accidents  
(1999-2021)



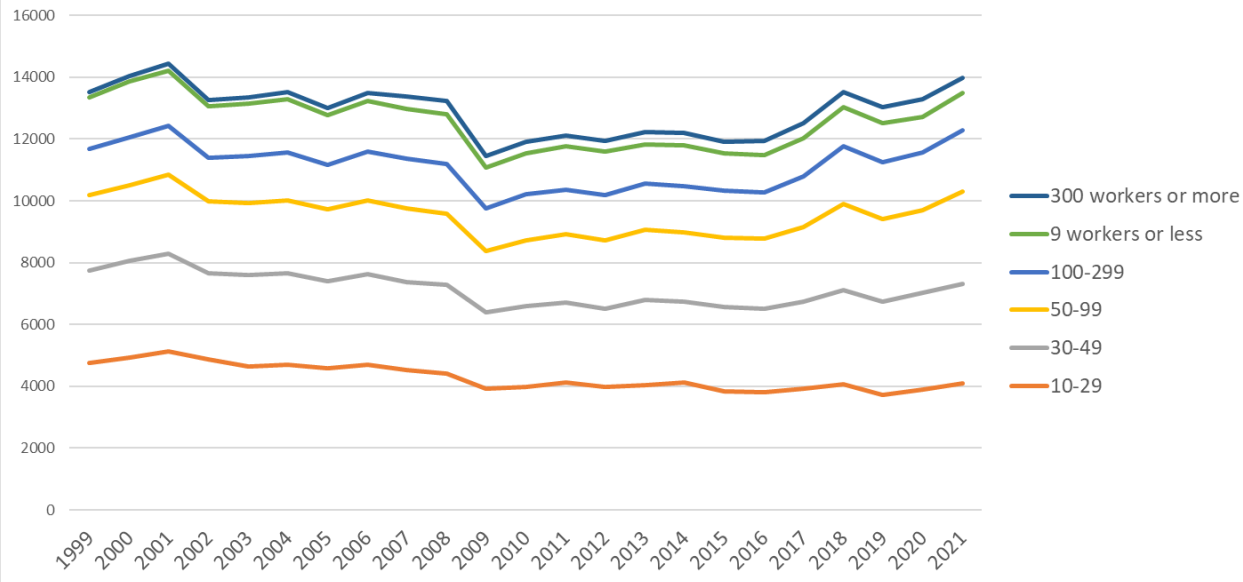
Transition of fatal and non-fatal accidents in type of accidents in code no. 040301 general truck transportation service (1999-2021)

Transition of fatal and non-fatal accidents in workers ages (1999-2021)



Transition of fatal and non-fatal accidents in workers ages in code no. 040301 general truck transportation service (1999-2021)

Transition of fatal and non-fatal accidents in workers scales (1999-2021)



Transition of fatal and non-fatal accidents in workers scales in code no. 040301 general truck transportation service (1999-2021)























07	caught in/between	1,776	1,928	1,874	1,778	1,764	1,766	1,604	1,692	1,657	1,655	1,383	1,471	1,425	1,396	1,387	1,411	1,323	1,349	1,356	1,395	1,382	1,303	1,311	35,386	caught in/between
03	crash	1,015	1,026	1,019	919	1,002	955	995	1,004	990	905	829	903	797	884	906	867	877	933	951	984	952	978	975	21,666	crash
17	traffic accident (public road)	1,479	1,495	1,479	1,309	1,309	1,301	1,235	1,182	1,125	996	840	904	959	933	963	944	878	818	821	793	755	708	735	23,961	traffic accident (public road)
06	crashed by	689	687	685	710	625	719	672	761	784	724	544	578	605	613	597	634	601	616	653	658	668	627	632	15,082	crashed by
04	struck by flying or falling object	1,039	990	1,045	947	877	934	849	906	799	787	673	652	685	677	676	669	627	651	619	644	574	578	581	17,479	struck by flying or falling object
05	collapse	497	529	514	468	508	515	447	456	483	470	413	443	397	408	421	352	368	352	364	398	413	365	380	9,961	collapse
90	others	37	47	41	41	45	68	49	46	48	59	66	54	87	54	54	41	67	59	66	68	72	204	374	1,747	others
08	cut	177	209	225	173	181	157	161	169	162	167	161	154	147	132	172	135	117	146	128	146	135	122	124	3,600	cut
11	contact to high/low-temperature	46	60	72	72	55	55	63	51	59	69	40	91	81	80	88	71	87	67	91	185	126	148	86	1,843	contact to high/low-temperature
09	injury to the sole of the foot	16	27	27	14	24	27	20	25	30	16	12	12	16	17	18	23	22	20	19	24	21	18	16	464	injury to the sole of the foot
12	contact to harmful substance	15	28	19	27	17	16	19	13	15	26	16	19	12	16	17	11	14	11	14	16	16	24	16	397	contact to harmful substance
99	unclassifiable	18	14	28	24	29	14	24	26	28	27	14	11	23	30	20	25	20	20	25	21	18	10	8	477	unclassifiable
18	traffic accident (others)	14	15	9	4	3	7	6	6	11	5	3	3	7	10	6	9	11	6	7	7	8	5	7	169	traffic accident (others)
15	burst	5	9	16	3	9	11	9	9	11	4	2	5	3	5	4	8	3	5	3	2	5	6	5	142	burst
14	explosion	5	4	2	1	5	4	4	5	5	4	2	4	3			1	2		4	1	5	2	4	67	explosion
13	electric shock	2	4	2	1	3		3	1	1	1	3	2	1	1	1	3	2	1	1			2	3	38	electric shock
16	fire	3	10	4	2	4	5	4	4	3	2	2	1		2	2	4	4		1	1	1	1	2	62	fire
10	drown				1	2	1	1	2		1	1	1	114	1			2				3			130	drown
	total	13,514	14,048	14,424	13,252	13,357	13,533	12,999	13,482	13,362	13,232	11,465	11,916	12,107	11,936	12,221	12,194	11,911	11,943	12,525	13,529	13,034	13,292	13,991	297,267	total



code	Age	1999	2000	2001	2002	2003	2004	2005	2006	2007	2008	2009	2010	2011	2012	2013	2014	2015	2016	2017	2018	2019	2020	2021	total	Age
5	50-59	3,033	3,202	3,360	3,250	3,120	3,216	3,106	3,265	3,165	3,054	2,636	2,682	2,768	2,722	2,947	3,072	3,136	3,113	3,551	3,915	4,001	4,211	4,573	75,098	50-59
4	40-49	3,007	3,045	3,057	2,838	2,907	3,039	3,053	3,408	3,461	3,421	3,332	3,626	3,869	4,013	4,155	4,192	4,099	4,084	4,049	4,202	3,837	3,751	3,687	82,132	40-49
6	60 years old or more	503	585	684	680	747	836	898	943	1,112	1,260	1,157	1,284	1,380	1,381	1,508	1,519	1,554	1,705	1,784	2,126	2,144	2,256	2,480	30,526	60 years old or more
3	30-39	3,645	3,981	4,252	3,937	4,262	4,233	4,010	4,003	3,846	3,816	3,020	3,050	2,922	2,693	2,479	2,314	2,100	2,028	1,992	2,006	1,811	1,751	1,717	69,868	30-39
2	20-29	3,209	3,095	2,924	2,428	2,231	2,099	1,821	1,742	1,662	1,556	1,239	1,171	1,084	1,039	1,020	972	917	884	1,017	1,148	1,078	1,184	1,366	36,886	20-29
1	19 years old or less	117	140	147	119	90	110	111	121	116	125	81	103	84	88	112	125	105	129	132	132	163	139	168	2,757	19 years old or less
	total	13,514	14,048	14,424	13,252	13,357	13,533	12,999	13,482	13,362	13,232	11,465	11,916	12,107	11,936	12,221	12,194	11,911	11,943	12,525	13,529	13,034	13,292	13,991	297,267	total

Transition of fatal and non-fatal accidents in workers scales in code no. 040301 general truck transportation service (1999-2021)

code	Workers scale	1999	2000	2001	2002	2003	2004	2005	2006	2007	2008	2009	2010	2011	2012	2013	2014	2015	2016	2017	2018	2019	2020	2021	total	Workers scale
2	10-29	4,771	4,928	5,126	4,874	4,640	4,707	4,580	4,694	4,518	4,420	3,918	3,988	4,133	3,993	4,038	4,115	3,840	3,824	3,929	4,076	3,736	3,908	4,098	98,854	10-29
3	30-49	2,984	3,146	3,165	2,799	2,967	2,962	2,834	2,943	2,867	2,860	2,486	2,607	2,591	2,505	2,753	2,617	2,731	2,678	2,814	3,031	3,002	3,112	3,214	65,668	30-49
4	50-99	2,437	2,431	2,546	2,323	2,319	2,346	2,324	2,381	2,369	2,307	1,966	2,137	2,187	2,212	2,286	2,252	2,236	2,273	2,421	2,797	2,678	2,667	2,979	54,874	50-99
5	100-299	1,487	1,538	1,580	1,385	1,528	1,550	1,422	1,573	1,611	1,603	1,382	1,472	1,458	1,475	1,489	1,496	1,524	1,485	1,613	1,870	1,847	1,865	2,004	36,257	100-299
1	9 workers or less	1,669	1,815	1,793	1,689	1,706	1,737	1,617	1,644	1,616	1,606	1,332	1,342	1,390	1,402	1,259	1,314	1,217	1,224	1,261	1,256	1,254	1,175	1,186	33,504	9 workers or less
6	300 workers or more	166	190	214	182	197	231	222	247	381	436	381	370	348	349	396	400	363	459	487	499	517	565	510	8,110	300 workers or more
	total	13,514	14,048	14,424	13,252	13,357	13,533	12,999	13,482	13,362	13,232	11,465	11,916	12,107	11,936	12,221	12,194	11,911	11,943	12,525	13,529	13,034	13,292	13,991	297,267	total

Transition of fatal and non-fatal accidents in months in code no. 040301 general truck transportation service (1999-2021)

code	Month	1999	2000	2001	2002	2003	2004	2005	2006	2007	2008	2009	2010	2011	2012	2013	2014	2015	2016	2017	2018	2019	2020	2021	total	Month
12	December	1,155	1,147	1,181	1,213	1,105	1,066	1,253	1,089	1,141	1,036	975	1,067	1,058	1,024	1,054	1,073	969	1,040	1,106	1,123	1,106	1,188	1,297	25,466	December
3	March	1,202	1,276	1,389	1,137	1,216	1,288	1,259	1,255	1,251	1,236	1,068	1,128	1,151	1,099	1,078	1,160	1,036	1,043	1,107	1,173	1,115	1,140	1,267	27,074	March
8	August	1,131	1,218	1,141	1,034	1,026	1,156	1,029	1,103	1,169	1,102	886	984	1,015	1,012	1,023	966	1,002	946	1,017	1,099	1,156	1,104	1,229	24,548	August
1	January	1,036	1,043	1,223	1,081	1,045	1,066	955	1,144	921	1,055	942	954	1,001	982	999	1,006	988	1,000	1,052	1,208	957	1,002	1,228	23,888	January

7	July	1,229	1,189	1,214	1,240	1,205	1,199	1,195	1,166	1,118	1,264	1,078	1,082	1,104	997	1,141	1,139	1,129	1,074	1,080	1,274	1,273	1,164	1,186	26,740	July
2	February	1,109	1,145	1,241	1,007	1,059	1,127	1,018	1,134	1,061	1,143	953	974	887	1,053	971	1,169	932	913	1,037	1,144	1,041	1,088	1,167	24,373	February
9	September	1,226	1,269	1,201	1,034	1,134	1,077	1,066	1,070	1,113	1,080	902	977	1,016	961	1,037	936	1,011	999	997	1,187	1,092	1,093	1,153	24,631	September
6	June	1,140	1,163	1,207	1,099	1,105	1,194	1,110	1,108	1,155	1,040	949	980	1,054	973	942	960	1,021	963	1,027	1,105	1,000	1,213	1,132	24,640	June
4	April	1,102	1,168	1,193	1,059	1,117	1,095	1,080	1,075	1,120	1,119	985	962	989	969	976	919	994	1,034	996	1,031	1,115	1,064	1,124	24,286	April
10	October	1,128	1,146	1,203	1,143	1,177	1,178	1,095	1,161	1,159	1,085	991	1,017	981	978	1,101	1,022	973	1,048	1,143	1,163	1,100	1,243	1,087	25,322	October
11	November	1,065	1,214	1,131	1,123	1,093	1,127	1,002	1,120	1,067	979	921	951	966	993	974	955	975	964	1,028	1,054	1,034	1,035	1,069	23,840	November
5	May	991	1,070	1,100	1,082	1,075	960	937	1,057	1,087	1,093	815	840	885	895	925	889	881	919	935	968	1,045	958	1,052	22,459	May
	total	13,514	14,048	14,424	13,252	13,357	13,533	12,999	13,482	13,362	13,232	11,465	11,916	12,107	11,936	12,221	12,194	11,911	11,943	12,525	13,529	13,034	13,292	13,991	297,267	total

Transition of fatal and non-fatal accidents in prefectures in code no. 040301 general truck transportation service (1999-2021)

code	Prefecture	1999	2000	2001	2002	2003	2004	2005	2006	2007	2008	2009	2010	2011	2012	2013	2014	2015	2016	2017	2018	2019	2020	2021	total	Prefecture
27	Osaka	1,271	1,231	1,376		1,251		1,111	1,189	1,202	1,166	1,014	1,072	1,043	1,034	1,006	954	1,017	962	1,020	1,156	1,121	1,123	1,139	23,458	Osaka
11	Saitama	650	667	802		779		816	878	903	855	820	814	828	848	831	863	931	903	902	990	1,012	1,020	1,085	18,197	Saitama
13	Tokyo	1,010	1,019	1,097		932		920	934	881	978	843	870	827	873	867	787	760	823	844	900	887	819	917	18,788	Tokyo
23	Aichi	876	908	891		888		784	821	807	738	610	700	684	694	724	659	705	688	765	813	836	836	806	16,233	Aichi
1	Hokkaido	898	968	958		856		847	935	793	722	701	705	712	716	786	772	681	682	761	770	710	753	790	16,516	Hokkaido
14	Kanagawa	642	730	677		626		652	654	734	774	625	634	627	638	623	699	654	653	705	748	714	731	760	14,300	Kanagawa
12	Chiba	506	578	683		530		580	589	596	654	580	589	591	578	611	621	602	599	606	652	636	755	734	12,870	Chiba
40	Fukuoka	730	676	727		743		611	665	635	622	544	612	579	565	558	598	547	601	603	642	631	674	690	13,253	Fukuoka
28	Hyogo	611	603	557		505		516	519	573	590	464	426	479	494	492	462	516	452	525	566	509	502	511	10,872	Hyogo
22	Shizuoka	496	570	508		485		447	492	501	491	406	490	422	429	415	446	421	451	428	435	436	464	466	9,699	Shizuoka
34	Hiroshima	413	373	401		425		357	416	389	380	315	338	339	321	374	313	325	283	336	321	354	358	401	7,532	Hiroshima
8	Ibaraki	337	373	366		335		347	375	348	350	278	331	386	310	348	326	323	315	330	338	303	325	370	7,114	Ibaraki
4	Miyagi	322	296	288		302		291	319	260	275	241	236	364	270	264	318	269	284	308	324	331	297	363	6,222	Miyagi
15	Niigata	227	245	261		209		208	219	196	196	189	232	228	210	224	214	188	216	213	276	215	218	314	4,698	Niigata
33	Okayama	216	219	247		231		212	215	261	268	210	207	250	263	262	242	255	242	273	314	284	266	307	5,244	Okayama
10	Gunma	259	288	297		281		288	289	290	267	233	250	255	228	225	249	231	266	246	268	266	280	297	5,553	Gunma

26	Kyoto	237	272	247		206		247	228	233	206	206	172	221	194	222	234	251	229	246	265	214	267	272	4,869	Kyoto
24	Mie	155	214	265		230		233	285	256	237	223	180	172	210	227	210	215	213	215	222	220	231	246	4,659	Mie
9	Tochigi	226	214	230		208		190	182	202	197	199	181	151	185	171	176	172	155	168	198	182	207	227	4,021	Tochigi
46	Kagoshima	193	205	194		182		219	201	207	188	153	168	172	162	178	183	171	165	154	182	175	183	189	3,824	Kagoshima
7	Fukushima	227	240	219		206		205	202	166	192	178	190	184	209	210	197	159	184	173	179	166	188	186	4,060	Fukushima
20	Nagano	116	114	140		139		127	97	138	144	100	110	112	112	103	143	121	129	147	169	148	143	184	2,736	Nagano
21	Gifu	195	223	199		228		214	206	169	176	164	157	163	157	177	148	177	161	175	166	180	151	182	3,768	Gifu
38	Ehime	191	190	182		185		158	202	201	170	147	183	151	151	142	151	148	156	165	146	156	150	156	3,481	Ehime
37	Kagawa	143	153	166		148		147	128	173	151	118	120	129	120	128	92	120	132	138	135	134	134	145	2,854	Kagawa
43	Kumamoto	190	222	194		187		180	231	190	209	167	158	165	148	179	154	142	162	159	189	175	169	143	3,713	Kumamoto
2	Aomori	120	114	143		112		98	77	131	113	101	95	103	118	110	103	105	105	105	122	110	120	138	2,343	Aomori
41	Saga	120	128	127		129		139	123	132	115	96	122	111	115	149	148	128	104	116	123	149	147	135	2,656	Saga
45	Miyazaki	118	98	120		96		130	96	120	104	103	89	81	98	87	118	102	95	103	123	125	114	133	2,253	Miyazaki
25	Shiga	162	144	157		162		138	148	131	160	119	130	130	149	145	138	121	144	115	145	120	127	130	2,915	Shiga
29	Nara	79	90	88		99		120	157	154	132	134	131	126	139	140	157	121	126	121	132	133	120	129	2,628	Nara
6	Yamagata	96	102	82		78		89	121	104	112	87	79	105	91	84	84	95	70	88	101	87	84	125	1,964	Yamagata
17	Ishikawa	121	148	145		130		128	133	124	109	125	132	117	96	109	98	106	102	126	123	116	132	123	2,543	Ishikawa
3	Iwate	151	131	167		121		129	140	122	115	83	98	135	122	138	149	141	119	126	136	128	91	121	2,663	Iwate
42	Nagasaki	125	116	111		143		124	95	109	104	98	98	116	96	92	110	94	100	71	109	124	129	111	2,275	Nagasaki
35	Yamaguchi	155	174	167		129		131	128	113	141	101	90	100	74	103	99	80	112	88	125	105	107	104	2,426	Yamaguchi
16	Toyama	163	165	177		127		125	122	104	124	98	84	95	101	102	115	105	98	151	109	118	105	94	2,482	Toyama
44	Oita	120	115	100		107		102	96	102	95	89	87	79	73	71	81	56	80	68	102	92	96	94	1,905	Oita
19	Yamanashi	56	62	73		66		60	47	57	63	46	45	49	65	61	61	55	54	69	87	71	76	94	1,317	Yamanashi
18	Fukui	118	104	128		101		108	111	100	103	61	67	90	65	81	87	61	74	81	76	93	98	89	1,896	Fukui
5	Akita	91	91	75		65		58	70	77	64	62	81	80	66	59	82	63	74	69	106	77	82	89	1,581	Akita
36	Tokushima	65	82	64		75		80	79	64	74	52	64	59	70	62	59	82	69	55	86	68	75	89	1,473	Tokushima
30	Wakayama	90	115	118		115		117	112	118	124	93	92	102	97	86	87	107	106	97	114	95	96	81	2,162	Wakayama
47	Okinawa	17	38	17		27		39	19	32	33	32	47	45	41	55	42	53	59	80	59	69	81	73	958	Okinawa

39	Kochi	94	108	90		75		68	56	60	71	65	67	65	62	64	71	51	65	94	80	69	82	63	1,520	Kochi
31	Tottori	45	62	28		48		53	33	48	28	40	45	49	34	31	45	34	44	43	63	46	39	49	907	Tottori
32	Shimane	71	70	75		55		56	48	56	52	52	48	36	45	45	49	50	37	54	44	44	47	47	1,081	Shimane
	total	13,514	14,048	14,424		13,357		12,999	13,482	13,362	13,232	11,465	11,916	12,107	11,936	12,221	12,194	11,911	11,943	12,525	13,529	13,034	13,292	13,991	270,482	total

Data source : <https://anzeninfo.mhlw.go.jp/user/anzen/tok/anst00.htm>

Return to [https://www.jisha.or.jp/english/statistics/202211\\_23.html](https://www.jisha.or.jp/english/statistics/202211_23.html)