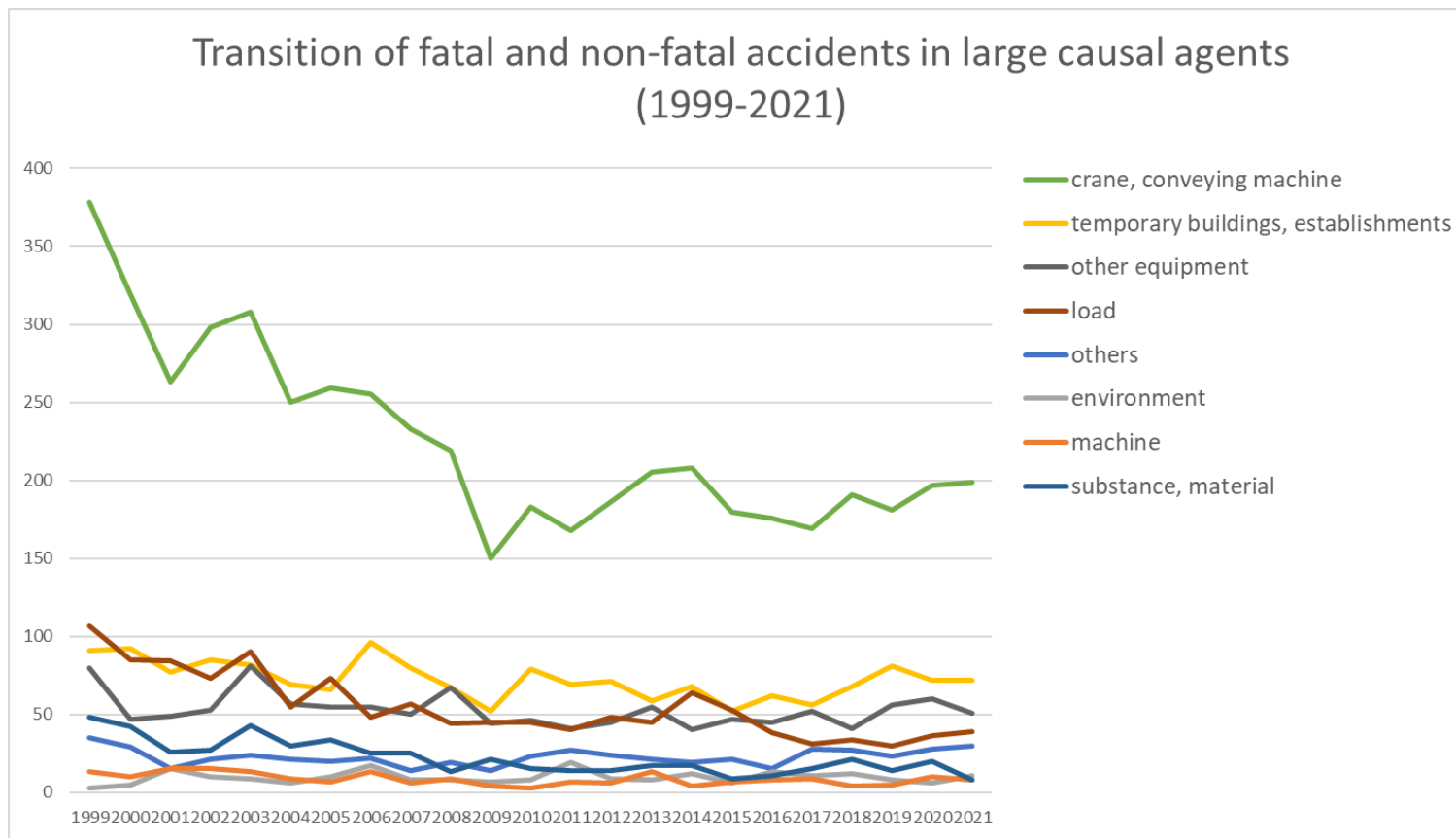
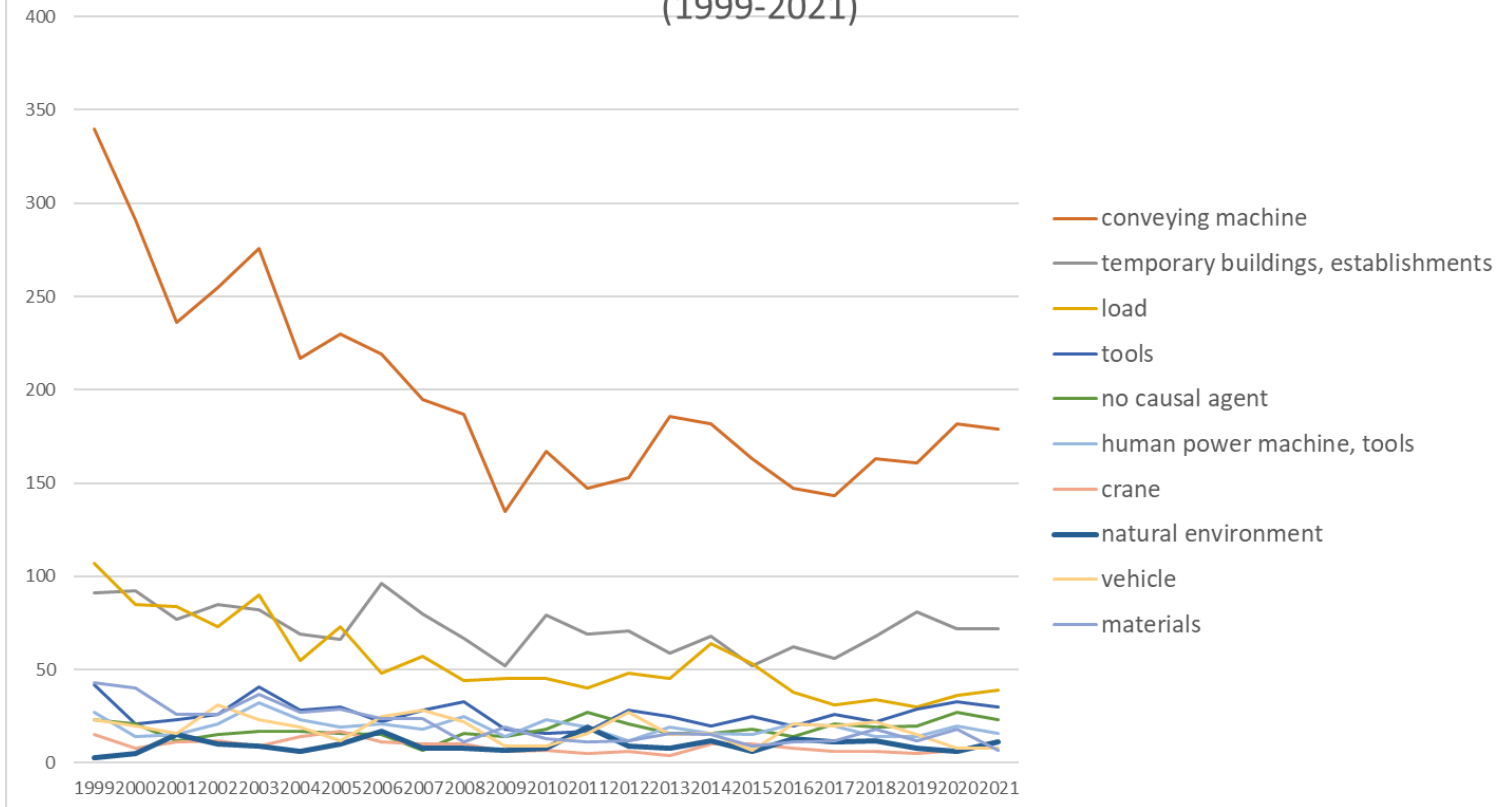


Transition of fatal and non-fatal accidents in each element like as causal agents, type of accidents, etc. in code no. 040302 specific truck transportation service (1999-2021)



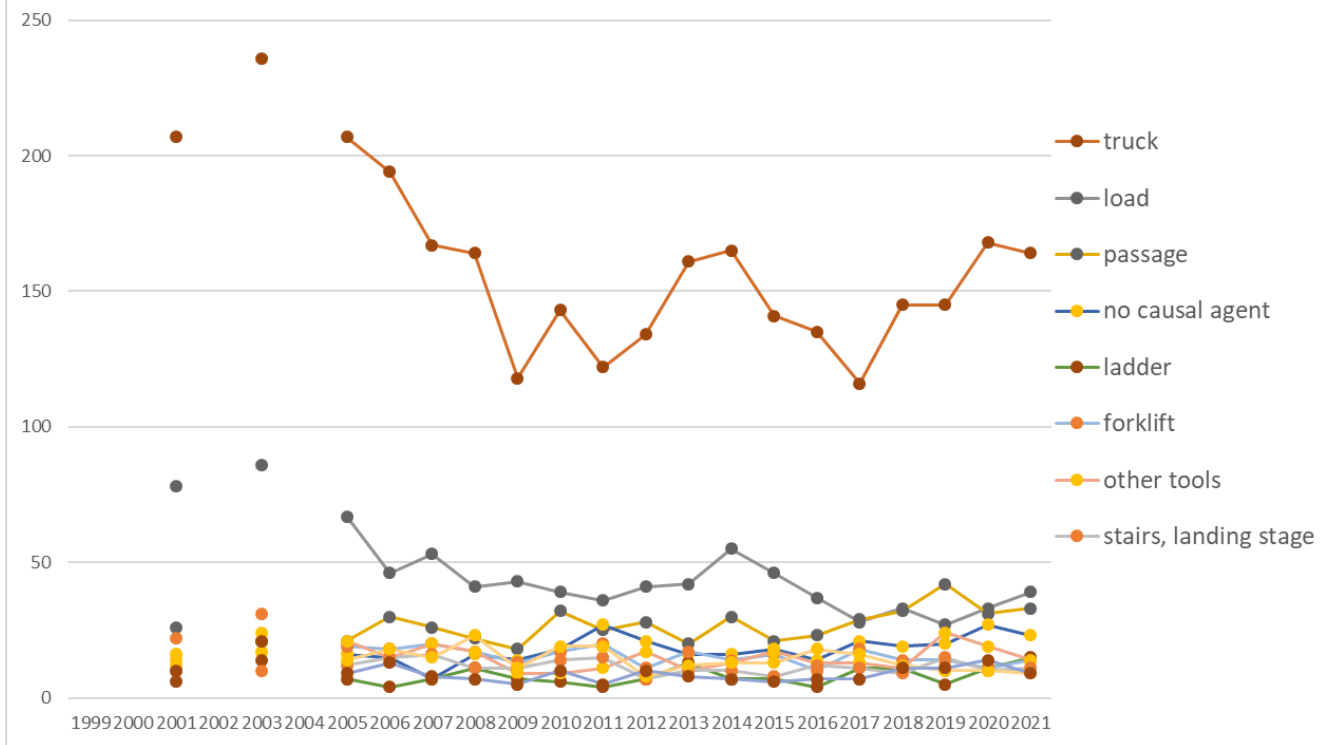
Transition of fatal and non-fatal accidents in large causal agents in code no. 040302 specific truck transportation service (1999-2021)

### Transition of fatal and non-fatal accidents in top 10 middle causal agents (1999-2021)



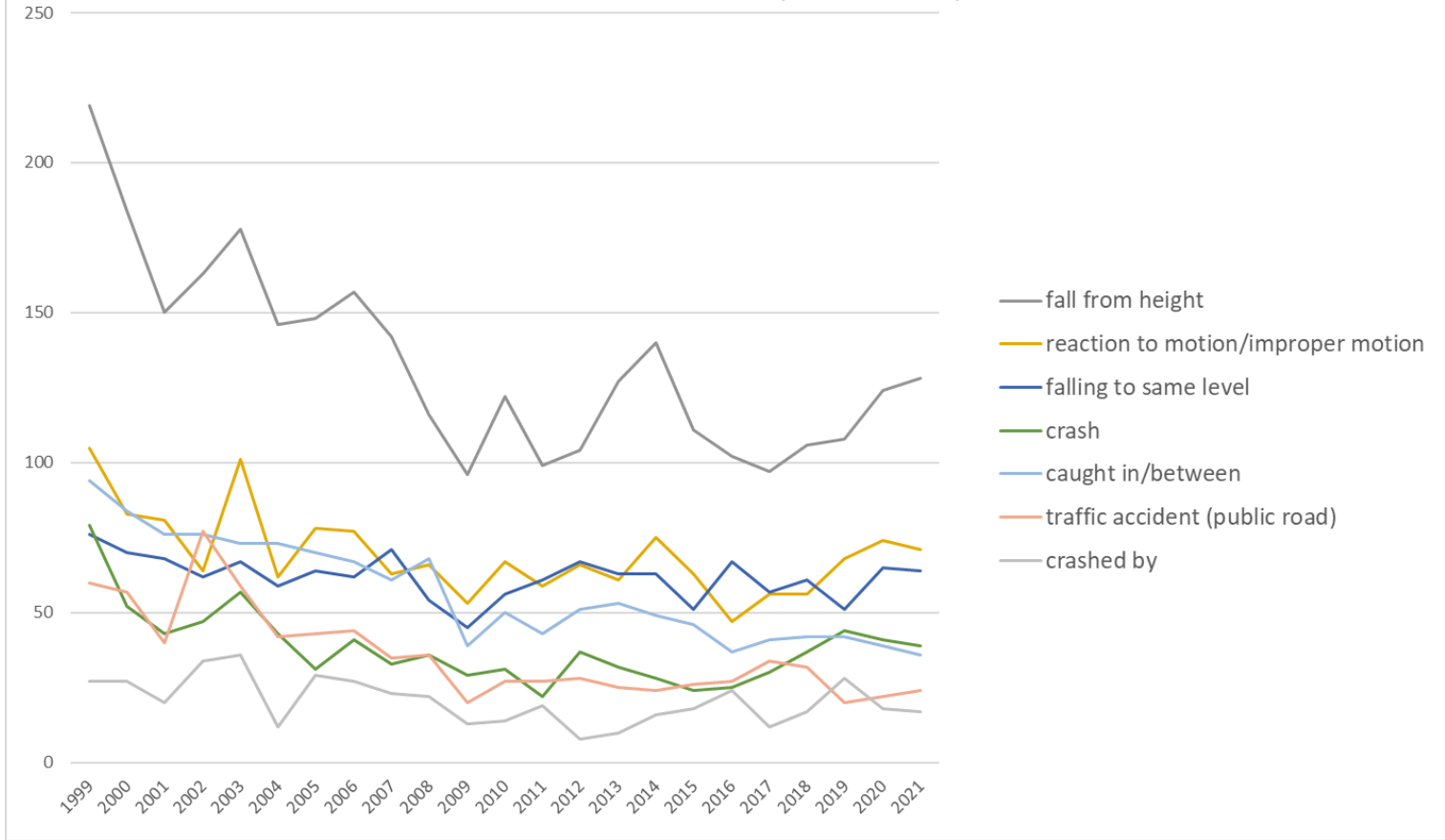
Transition of fatal and non-fatal accidents in middle causal agents in code no. 040302 specific truck transportation service (1999-2021)

### Transition of fatal and non-fatal accidents in top 10 small causal agents (1999-2021)



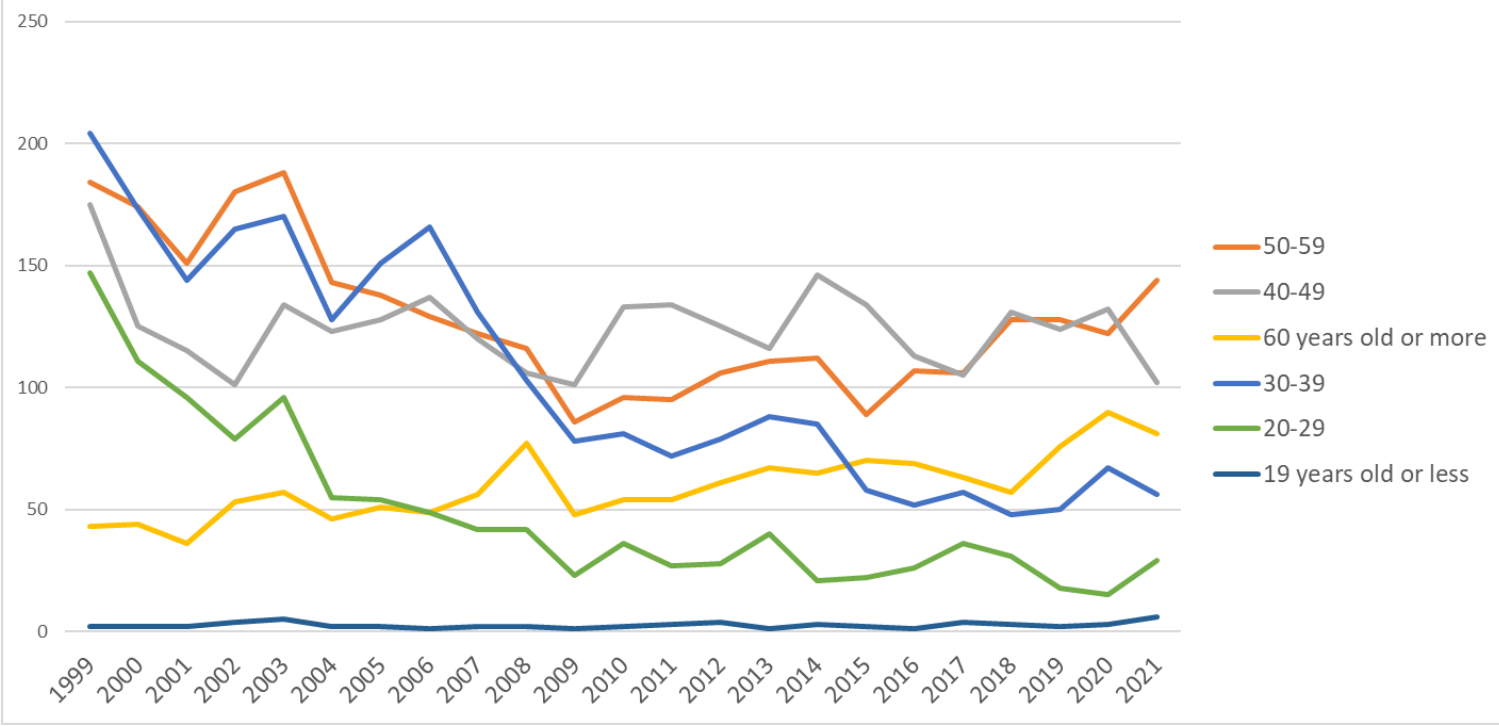
Transition of fatal and non-fatal accidents in small causal agents in code no. 040302 specific truck transportation service (1999-2021)

Transition of fatal and non-fatal accidents in top 7 type of accidents  
(1999-2021)



Transition of fatal and non-fatal accidents in type of accidents in code no. 040302 specific truck transportation service (1999-2021)

Transition of fatal and non-fatal accidents in workers ages (1999-2021)



Transition of fatal and non-fatal accidents in workers ages in code no. 040302 specific truck transportation service (1999-2021)



































3	March	66	77	52	49	62	40	60	56	44	34	27	38	37	38	35	37	40	35	32	38	35	28	45	1,005	March
12	December	53	42	44	42	67	39	42	40	41	31	21	30	26	31	41	49	21	34	40	33	23	52	44	886	December
8	August	68	41	51	50	55	35	39	42	36	27	26	31	32	38	24	33	28	27	40	39	30	38	40	870	August
9	September	60	51	35	50	56	32	38	46	34	33	29	33	36	28	45	40	32	32	29	21	33	31	37	861	September
11	November	69	41	43	53	47	37	38	46	42	28	27	30	24	36	33	27	30	28	31	22	46	30	37	845	November
5	May	59	51	39	46	57	31	38	45	44	36	20	22	33	26	34	34	34	29	24	32	25	34	36	829	May
10	October	50	65	53	51	41	40	34	28	34	44	26	37	31	44	41	32	35	24	33	33	26	28	34	864	October
6	June	58	43	30	49	53	43	53	59	34	49	27	35	44	30	37	43	32	38	25	34	36	42	32	926	June
2	February	65	64	54	46	50	59	34	37	41	42	39	31	24	35	33	36	32	30	37	34	31	32	31	917	February
7	July	70	37	49	56	52	45	54	48	40	46	34	55	23	34	32	34	34	28	27	37	34	47	30	946	July
1	January	63	42	53	40	60	41	55	40	45	39	28	31	43	35	38	31	30	43	29	46	37	34	26	929	January
4	April	74	75	41	50	50	55	39	44	38	37	33	29	32	28	30	36	27	20	24	29	42	33	26	892	April
	total	755	629	544	582	650	497	524	531	473	446	337	402	385	403	423	432	375	368	371	398	398	429	418	10,770	total

Transition of fatal and non-fatal accidents in prefectures in code no. 040302 specific truck transportation service (1999-2021)

code	Prefecture	1999	2000	2001	2002	2003	2004	2005	2006	2007	2008	2009	2010	2011	2012	2013	2014	2015	2016	2017	2018	2019	2020	2021	total	Prefecture
40	Fukuoka	12	22	17		25		20	27	24	34	27	21	17	28	27	29	25	21	43	48	66	70	68	671	Fukuoka
23	Aichi	44	43	35		49		34	50	40	46	28	23	40	37	40	50	45	36	38	41	39	57	42	857	Aichi
14	Kanagawa	45	56	43		35		30	28	31	28	16	37	19	25	17	22	29	15	15	22	17	26	29	585	Kanagawa
26	Kyoto	14	5	8		7		6	14	8	4	8	12	7	10	11	13	14	10	13	18	21	16	25	244	Kyoto
13	Tokyo	55	40	46		132		93	106	85	74	61	70	57	47	62	47	47	51	45	29	28	16	18	1,209	Tokyo
27	Osaka	141	108	84		99		79	58	28	17	17	25	23	39	41	46	32	27	31	34	29	29	17	1,004	Osaka
12	Chiba	26	24	15		22		20	12	13	17	21	21	13	24	15	12	10	18	9	8	11	15	17	343	Chiba
28	Hyogo	21	19	28		43		24	18	19	19	13	11	17	9	20	16	8	7	10	13	10	7	14	346	Hyogo



15	Niigata	3	6	1		3		1	3	6	3	4	4	1	3	3	2		1	2	2	3	3	3	57	Niigata
47	Okinawa	1							1	1			1			2		1					2	3	12	Okinawa
1	Hokkaido	9	10	8		14		8	9	9	8	6	1	8	8	6	10	11	17	9	10	5	10	2	178	Hokkaido
10	Gunma	3	5	11		10		6	10	7	3	3	2	5	7	4	6	3	5	6	13	5	7	2	123	Gunma
5	Akita	11	11	15		4		3	5	8	5	7	4		1	5		4	3	1		1		2	90	Akita
16	Toyama	7	3	3		2		6	4	3	2	3	6	8	4	1	3	3		1	5	5	3	2	74	Toyama
31	Tottori	5	7	1		3		3	4	3	5	2			3	2		1	2	5	3	1	2	2	54	Tottori
45	Miyazaki	5	3	4		2		4	3	5	2		2	3	1	2	4	3	2	1		2	2	2	52	Miyazaki
2	Aomori		1	3		3		2	5	2	5	1	2	1	3	3	5		2	2		5	2	2	49	Aomori
3	Iwate	3	1	2		1		1	3	1	1		3	4	1			1	1	1	5	3	6	2	40	Iwate
6	Yamagata	6	3	4		4		2	2							1	3	1	1	1	1			1	30	Yamagata
41	Saga	3	3	2		1			3	3		1	1		2	1	1		1	1	2	3		1	29	Saga
32	Shimane	2	8					2	1			1	1	1				1		1	1		1	1	21	Shimane
18	Fukui	7	3	5		7		5	3	2		1	6	9	3	3	4	6	4	2	3	2	1		76	Fukui
46	Kagoshima	6	4	5				3	6	4	4	3	2	2	2	4	6	1	6	3	1	2	4		68	Kagoshima
19	Yamanashi	1						3	1	3	1		3		1	1	1		1	1	2	1	1		21	Yamanashi
	total	755	629	544		650		524	531	473	446	337	402	385	403	423	432	375	368	371	398	398	429	418	9,691	total

Data source : <https://anzeninfo.mhlw.go.jp/user/anzen/tok/anst00.htm>

Return to [https://www.jisha.or.jp/english/statistics/202211\\_23.html](https://www.jisha.or.jp/english/statistics/202211_23.html)