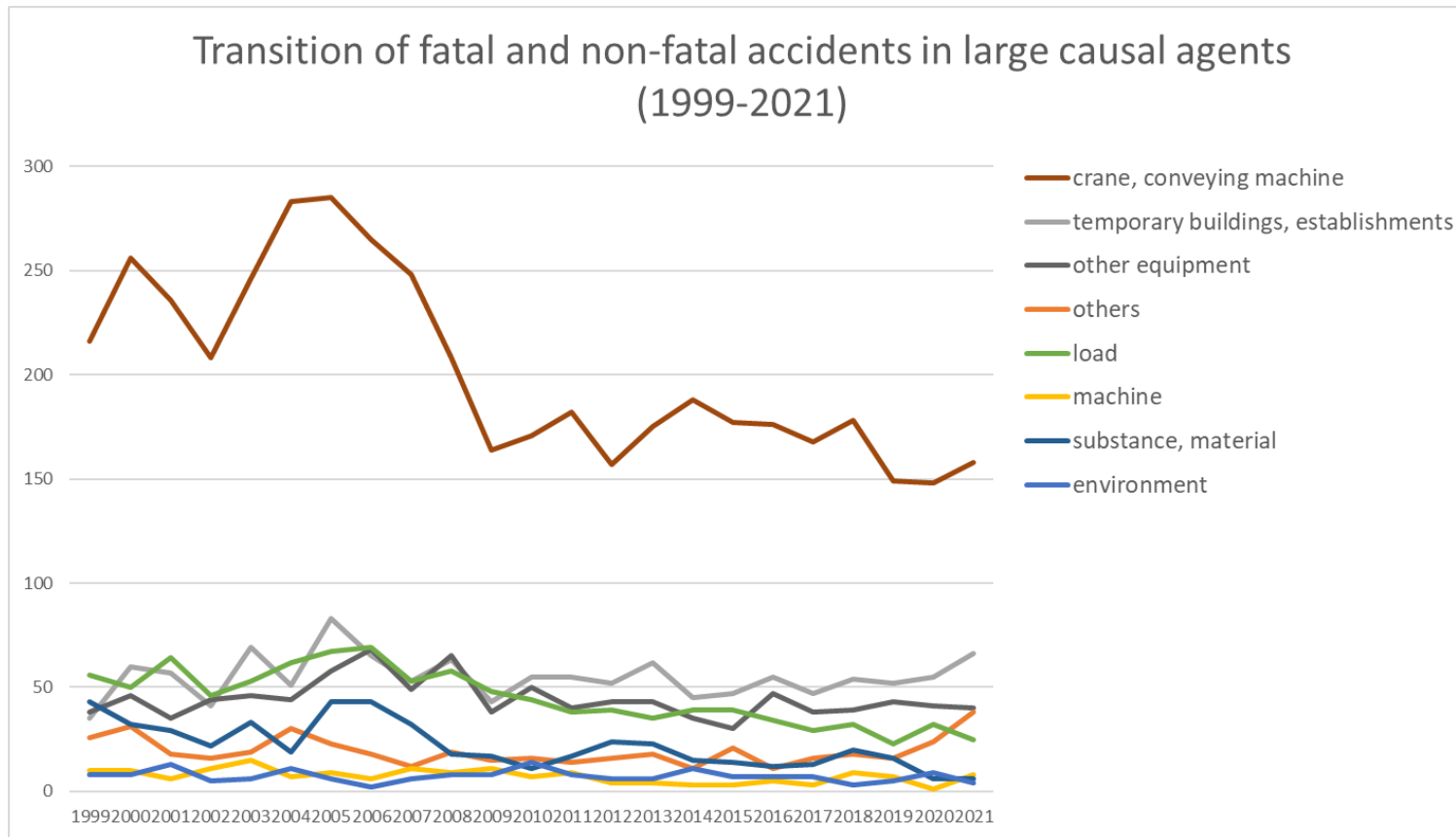
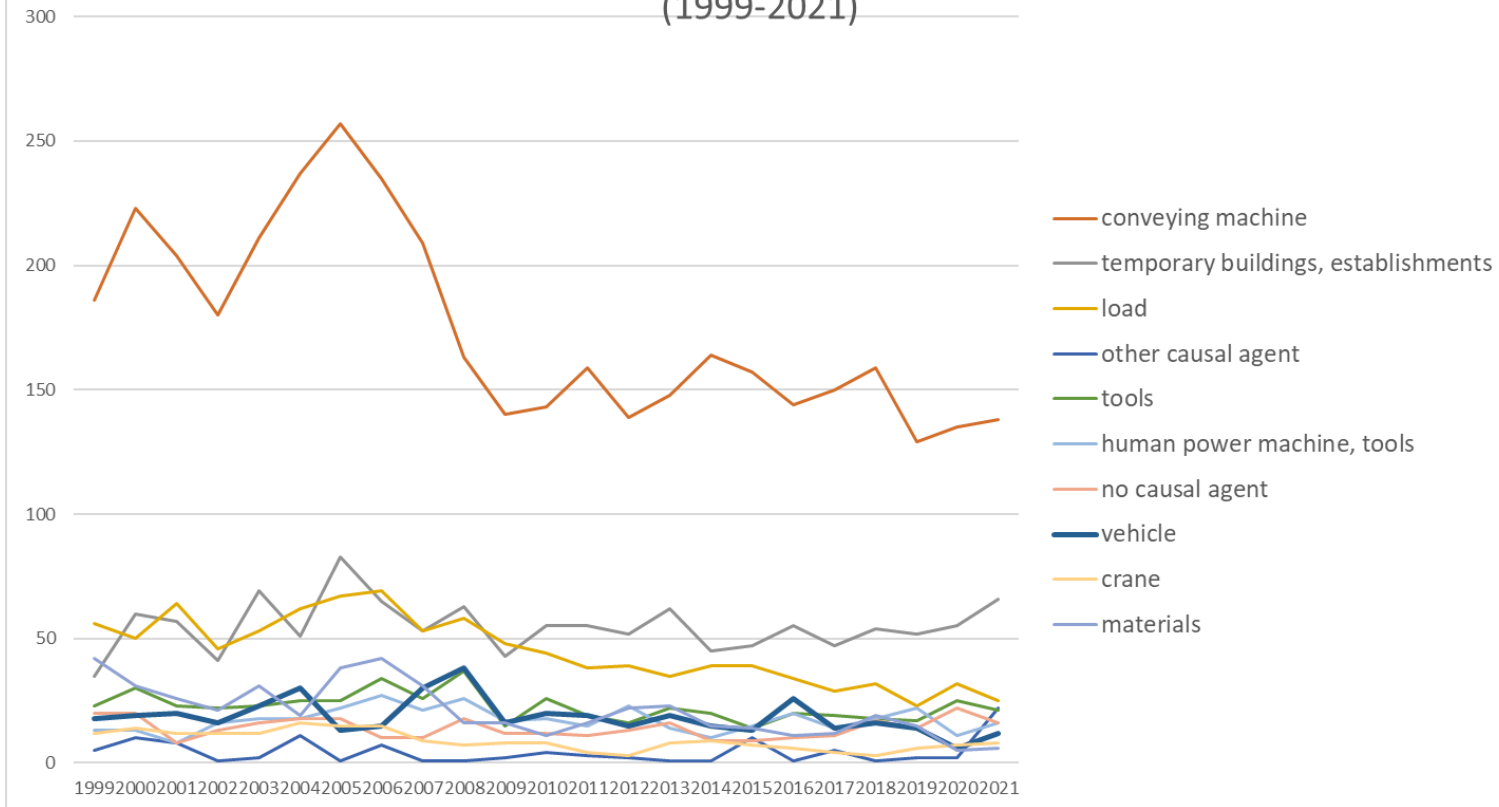


Transition of fatal and non-fatal accidents in each element like as causal agents, type of accidents, etc. in code no. 040309 other land cargo transportation service (1999-2021)



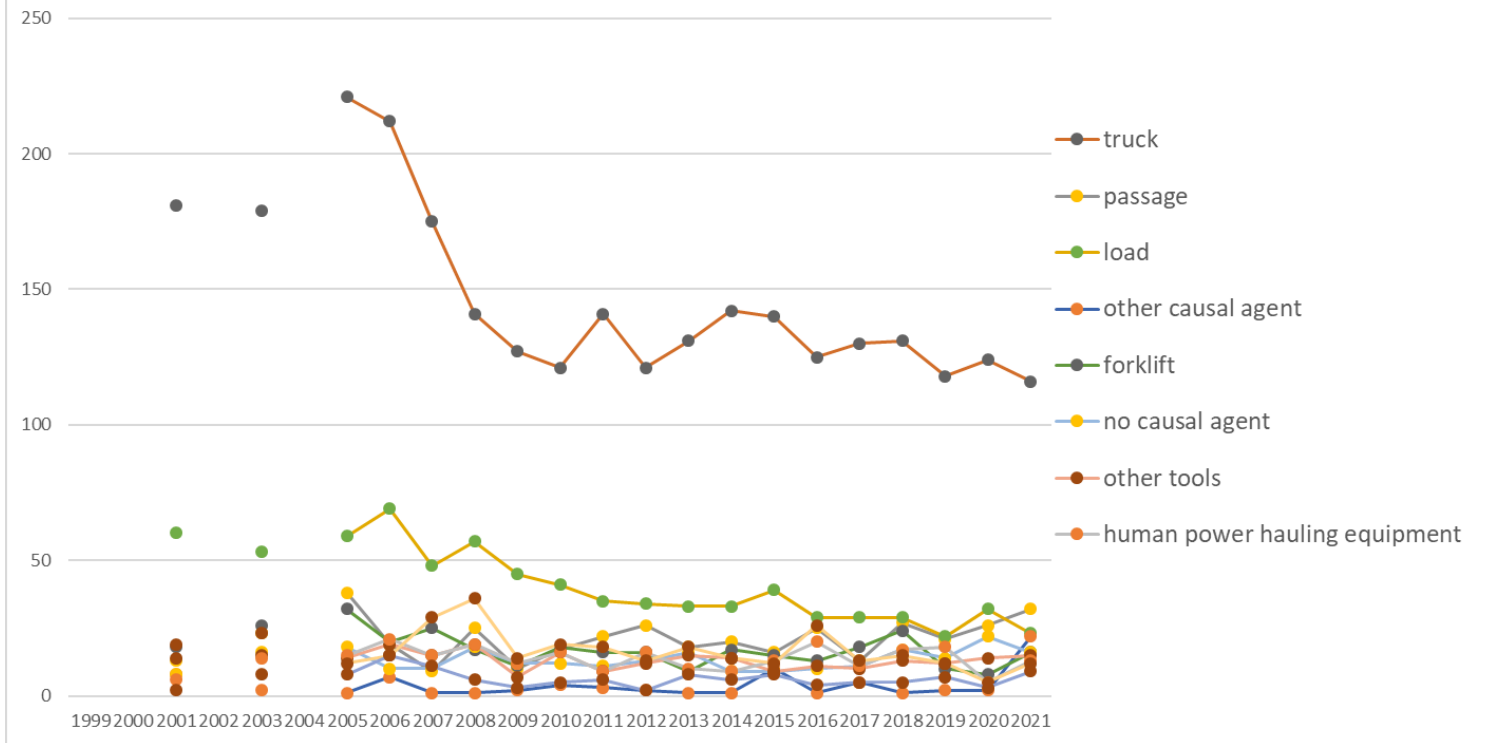
Transition of fatal and non-fatal accidents in large causal agents in code no. 040309 other land cargo transportation service (1999-2021)

Transition of fatal and non-fatal accidents in top 10 middle causal agents (1999-2021)



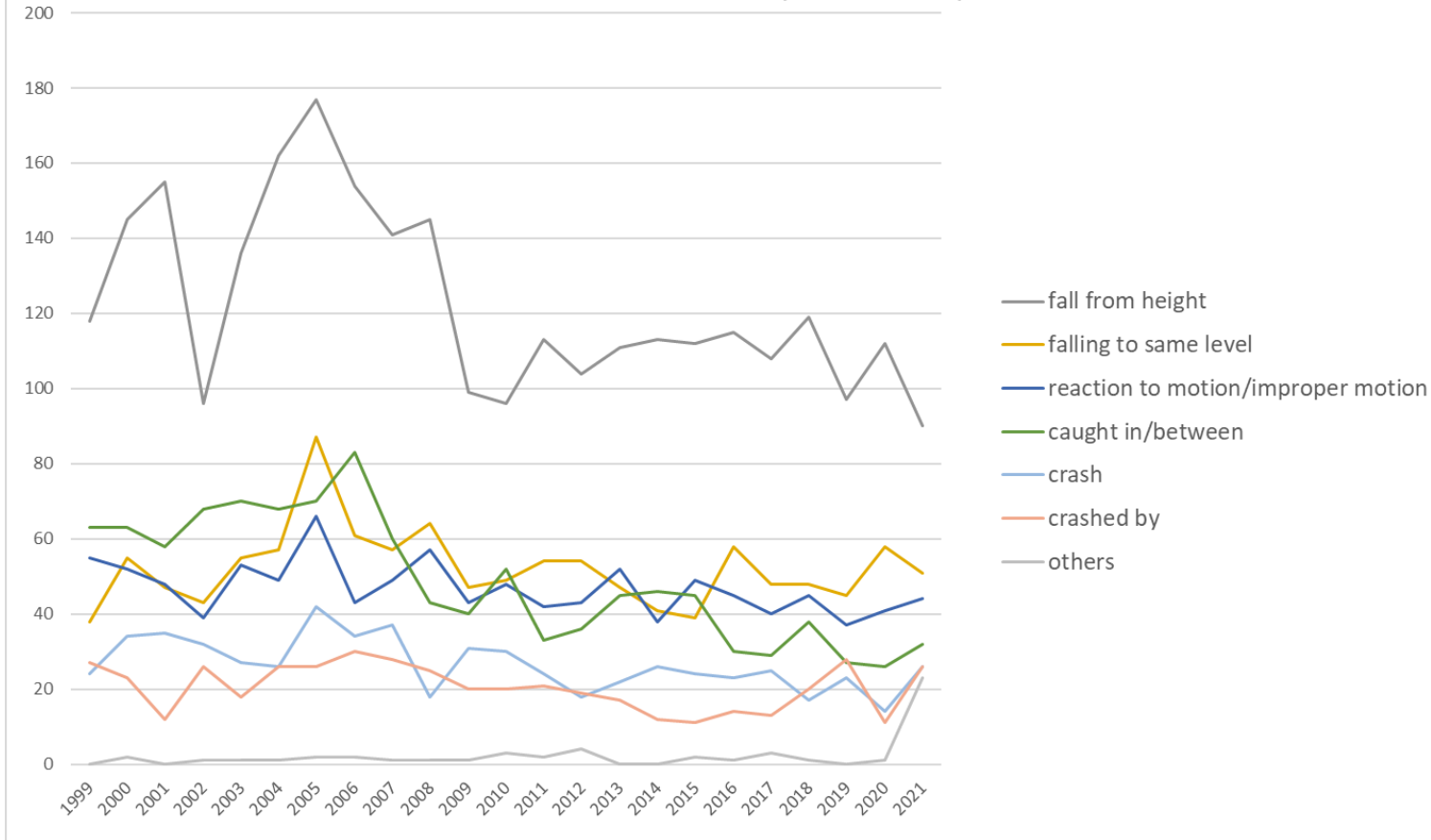
Transition of fatal and non-fatal accidents in middle causal agents in code no. 040309 other land cargo transportation service (1999-2021)

Transition of fatal and non-fatal accidents in top 10 small causal agents (1999-2021)



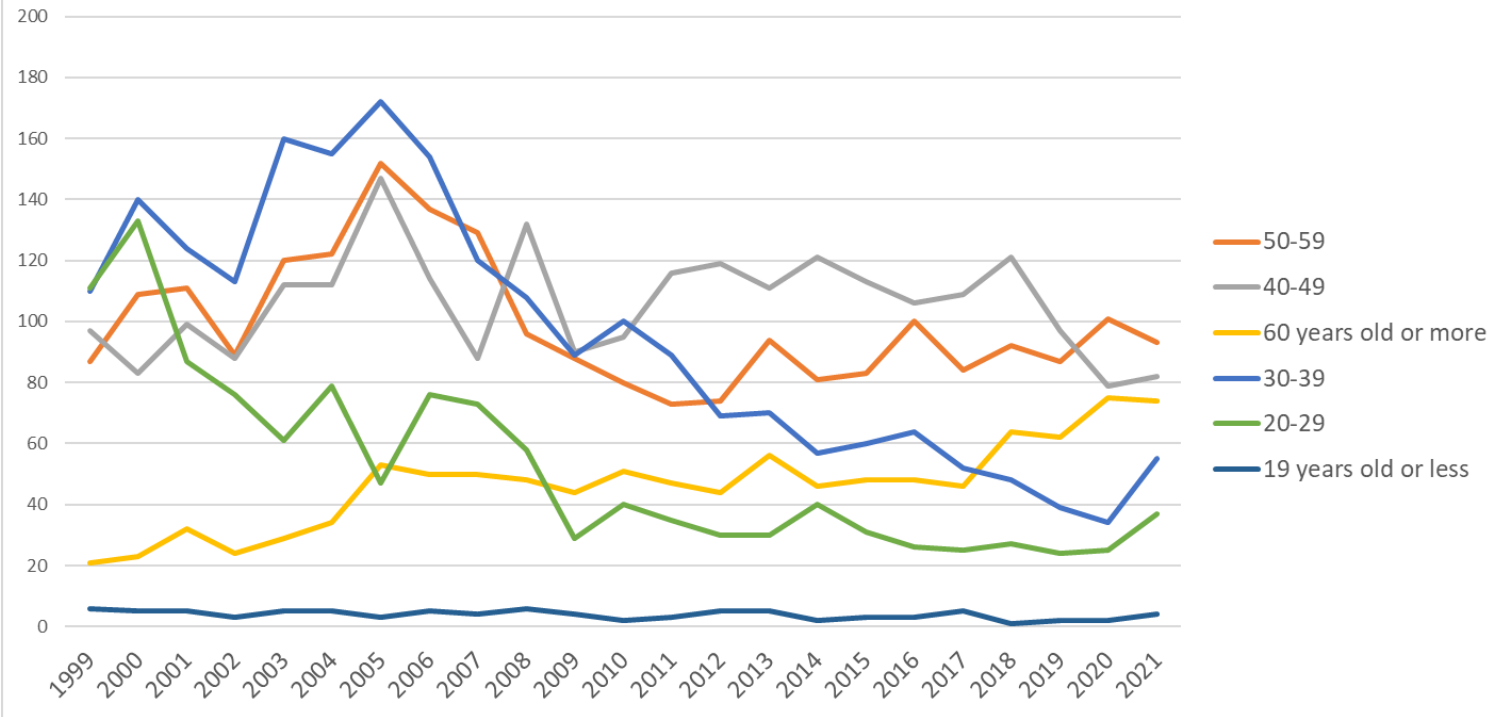
Transition of fatal and non-fatal accidents in small causal agents in code no. 040309 other land cargo transportation service (1999-2021)

Transition of fatal and non-fatal accidents in top 7 type of accidents
(1999-2021)



Transition of fatal and non-fatal accidents in type of accidents in code no. 040309 other land cargo transportation service (1999-2021)

Transition of fatal and non-fatal accidents in workers ages (1999-2021)



Transition of fatal and non-fatal accidents in workers ages in code no. 040309 other land cargo transportation service (1999-2021)

30	Wakayama	4	1	1				3	1	2	2	2	2	1	4	6	7	5	2	2	2	3	1	3	54	Wakayama	
47	Okinawa	1		4		2		3	2	2	1	2	2	2	3	1		2	3	1	2	1	2	3	39	Okinawa	
36	Tokushima	10	18	13		13		6	8	21	10	5	6	3	2	4	7	8	5	2		5		2	148	Tokushima	
15	Niigata	14	5	3		2		10	6	3	3	3		4	2	1	2	2	1	3	2	2	2	2	72	Niigata	
31	Tottori	1	5	3		2		1	2	7	3	5	1	1	1		2	1	2	1	1		2	2	43	Tottori	
19	Yamanashi							2	3	2	1	4	1	4		3			1	3	1	2	1	2	30	Yamanashi	
32	Shimane		1			2		3	2	1			4		2		1		1					2	19	Shimane	
37	Kagawa	8	13	17		12		7	9	5	9	5	6		4	6	11	1	4	3	8	3	4	1	136	Kagawa	
42	Nagasaki	3	4			1		4	2	7	2	3	2	3		2		3	2	6	3	1	2	1	51	Nagasaki	
38	Ehime	2	5	7		2		5	2	3	2	2	2		2	1			1		2	3	3	1	45	Ehime	
18	Fukui	2	7							1					1	2							2		1	16	Fukui
39	Kochi	2	1			6		19	20	10	3			2	1		2	2					1		69	Kochi	
3	Iwate	1	1	3				2	1	4	3	3	1						1				1		21	Iwate	
6	Yamagata	1	1	1		2			1			3		1			1		1		3	1			16	Yamagata	
29	Nara					2		1	1			2	1	1						1	3		1		13	Nara	
	total	432	493	458		487		574	536	464	448	344	368	363	341	366	347	338	347	321	353	311	316	345	8,352	total	

Data source : <https://anzeninfo.mhlw.go.jp/user/anzen/tok/anst00.htm>

Return to https://www.jisha.or.jp/english/statistics/202211_23.html