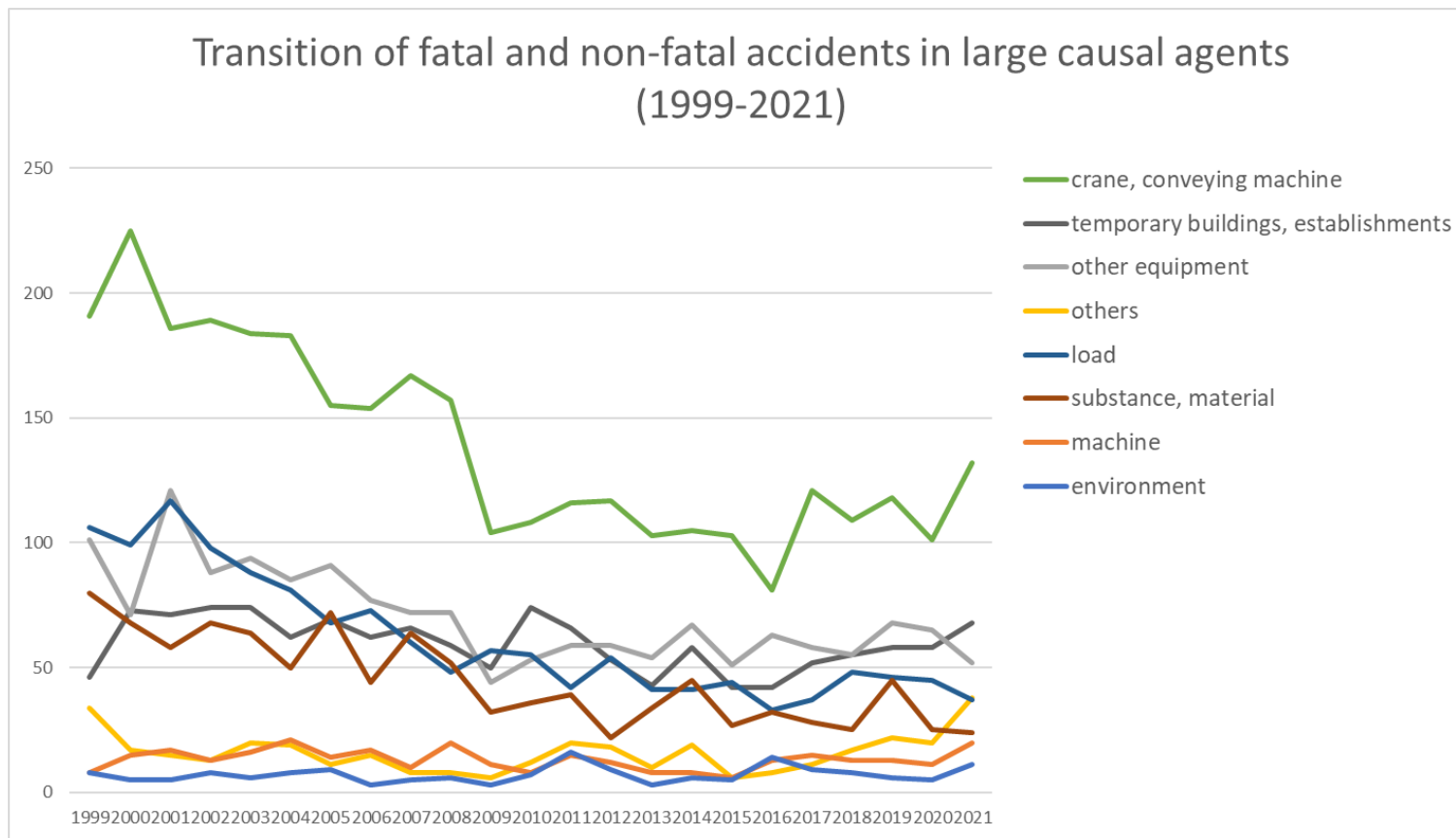
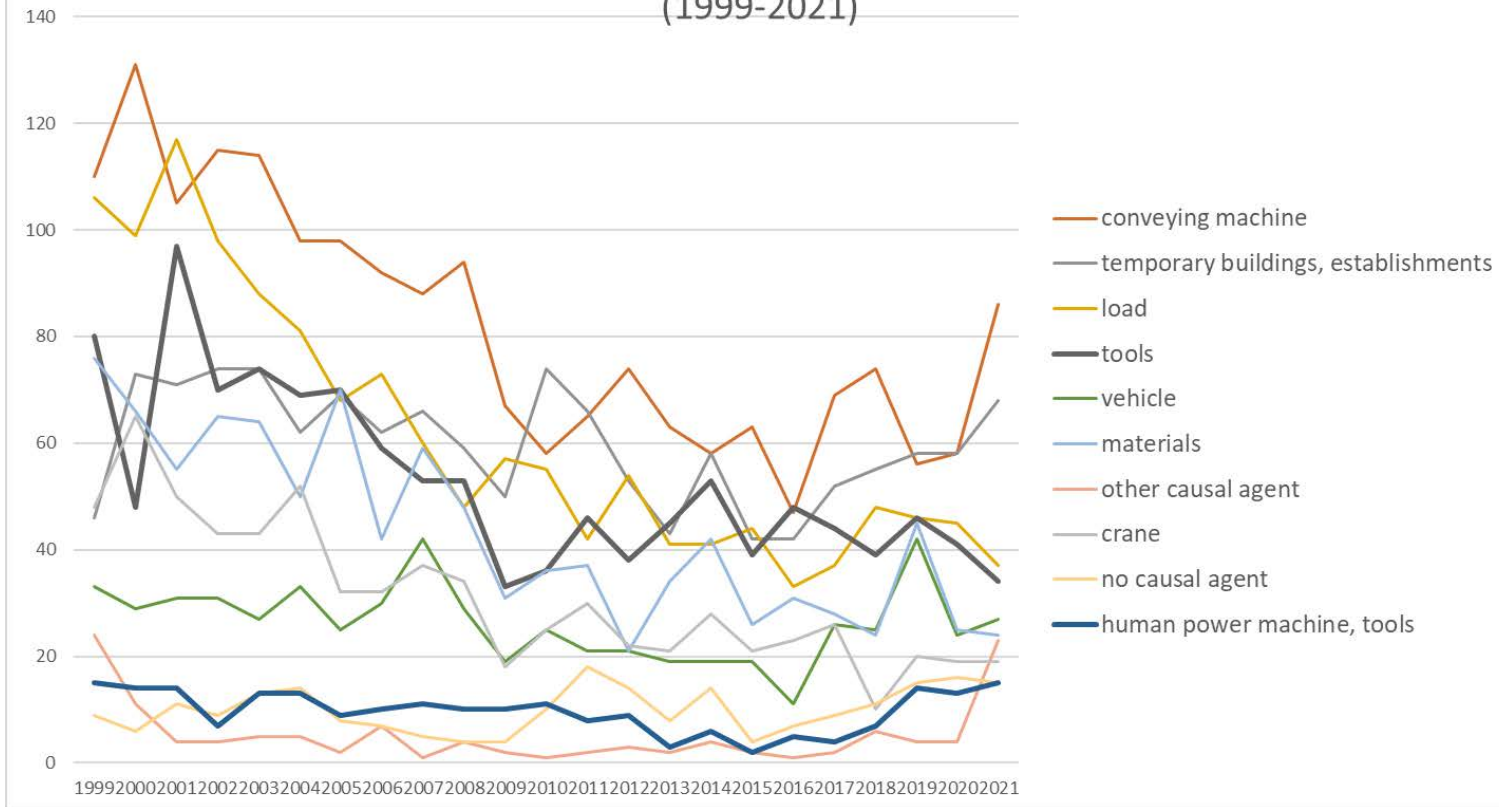


Transition of fatal and non-fatal accidents in each element like as causal agents, type of accidents, etc. in code no. 0502 harbor transportation service (1999-2021)



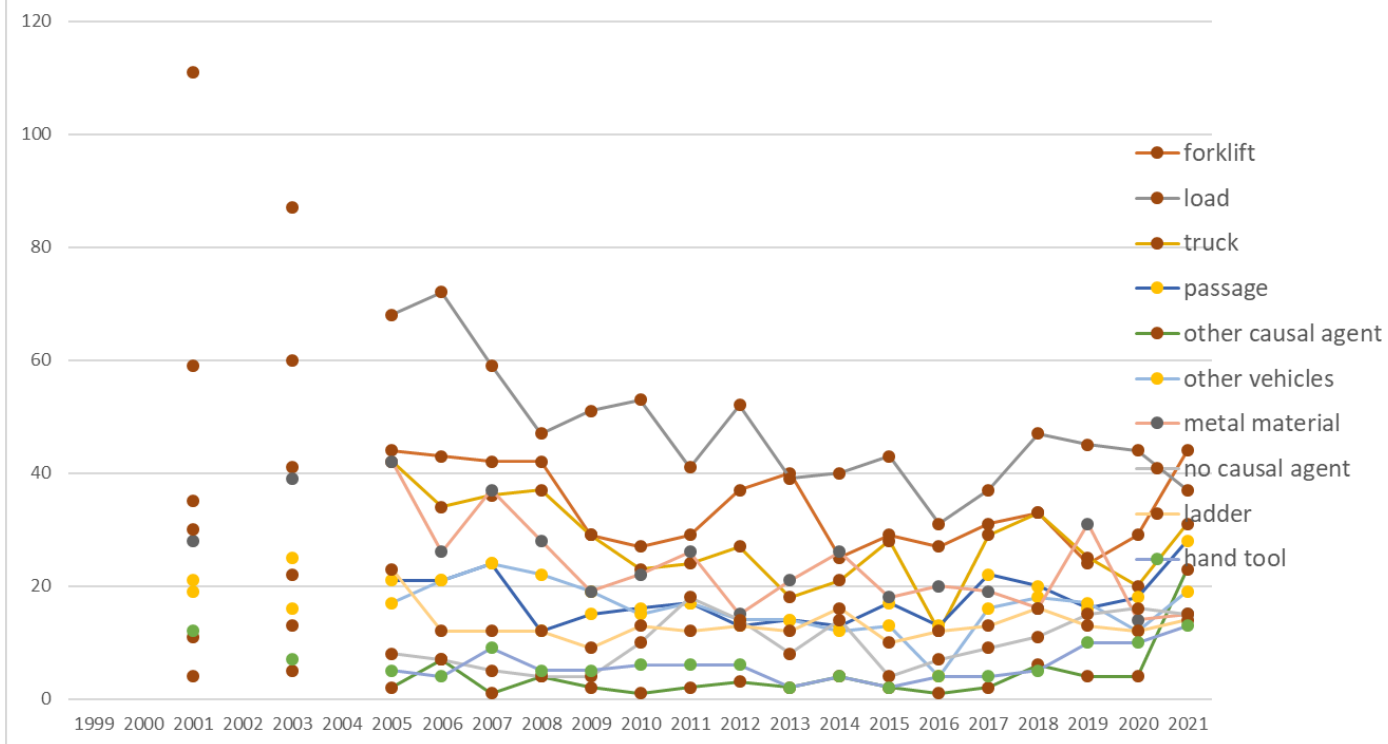
Transition of fatal and non-fatal accidents in large causal agents in code no. 0502 harbor transportation service (1999-2021)

Transition of fatal and non-fatal accidents in top 10 middle causal agents  
(1999-2021)



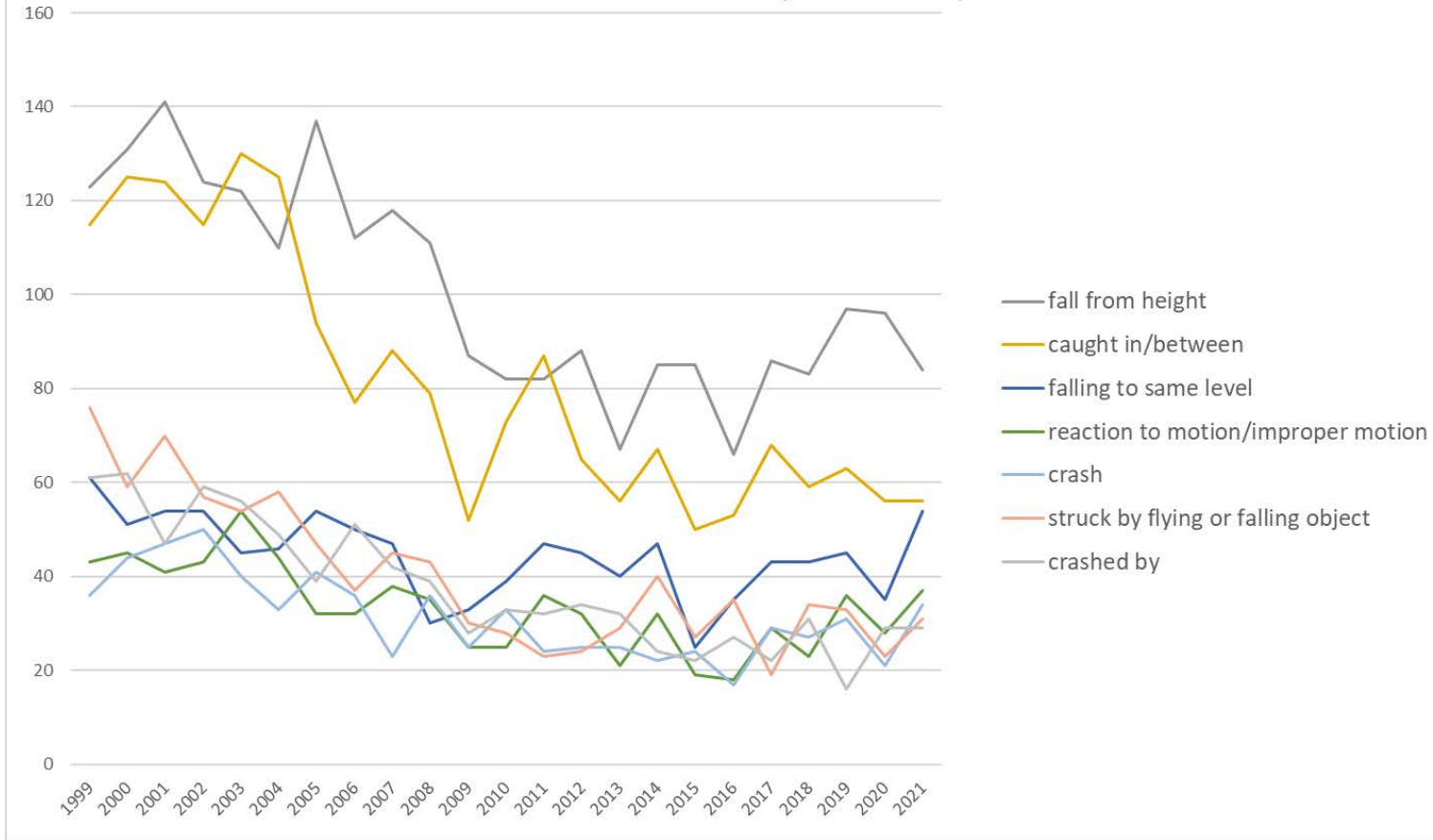
Transition of fatal and non-fatal accidents in middle causal agents in code no. 0502 harbor transportation service (1999-2021)

## Transition of fatal and non-fatal accidents in top 10 small causal agents (1999-2021)



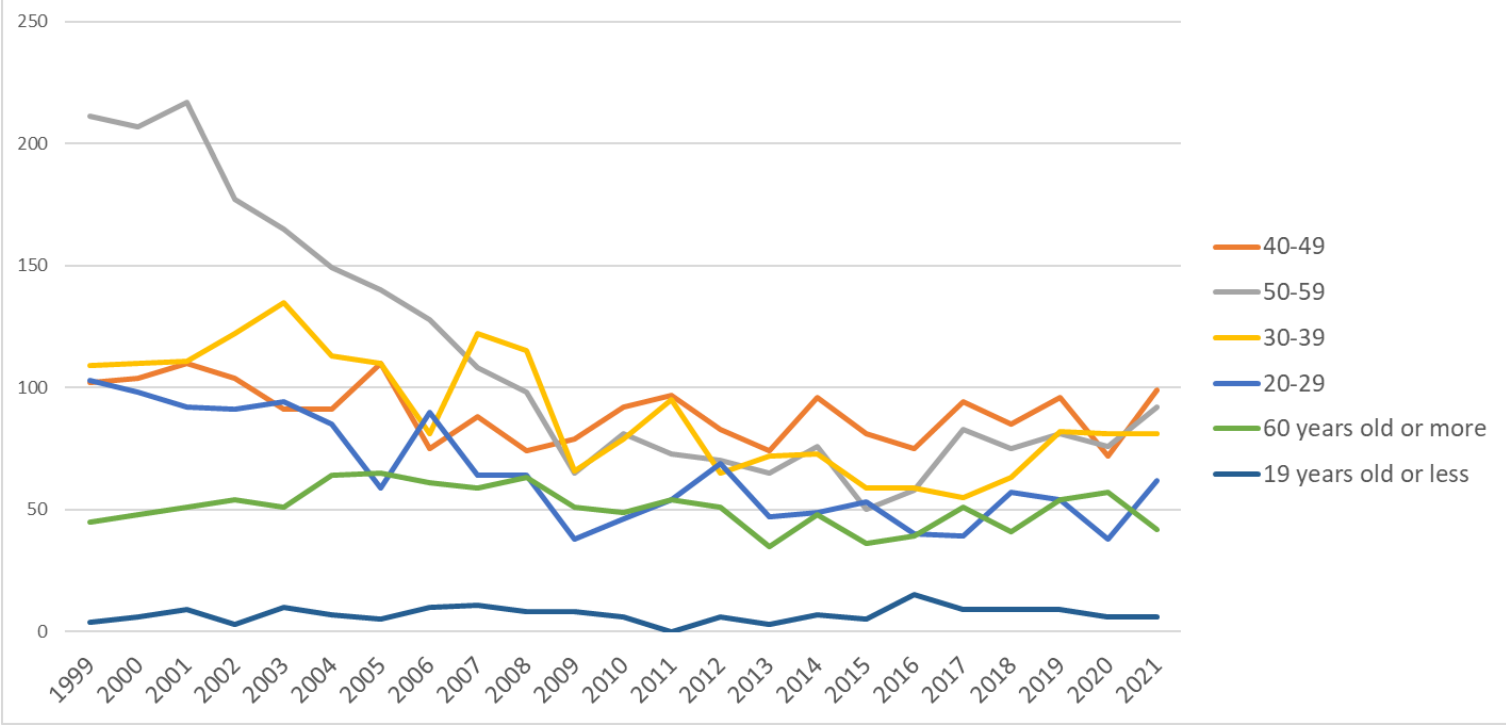
Transition of fatal and non-fatal accidents in small causal agents in code no. 0502 harbor transportation service (1999-2021)

Transition of fatal and non-fatal accidents in top 7 type of accidents  
(1999-2021)



Transition of fatal and non-fatal accidents in type of accidents in code no. 0502 harbor transportation service (1999-2021)

Transition of fatal and non-fatal accidents in workers ages (1999-2021)



Transition of fatal and non-fatal accidents in workers ages in code no. 0502 harbor transportation service (1999-2021)



































7	July	52	35	55	59	53	48	32	34	41	40	33	25	34	32	20	29	19	28	37	34	28	25	41	834	July
8	August	42	47	52	48	40	32	35	42	36	30	22	28	15	27	34	28	18	24	24	33	30	32	40	759	August
10	October	55	47	54	56	49	39	33	40	55	33	33	26	30	29	27	31	24	34	33	32	19	27	37	843	October
9	September	48	40	45	43	41	37	32	37	46	28	24	27	37	26	24	26	20	25	23	26	42	27	36	760	September
12	December	49	48	42	34	56	43	52	32	27	32	25	33	36	34	24	27	23	21	29	28	20	24	33	772	December
5	May	41	53	41	51	57	36	49	38	43	40	21	36	34	36	28	23	33	20	33	28	34	25	32	832	May
4	April	40	60	54	51	47	51	34	40	31	37	29	30	27	25	27	32	27	16	21	21	33	28	31	792	April
2	February	57	55	44	45	31	51	38	36	29	43	20	28	30	25	28	26	20	25	33	26	37	33	28	788	February
1	January	44	50	53	45	35	40	35	33	32	36	33	27	29	26	15	33	28	23	24	27	38	33	28	767	January
3	March	57	58	51	40	53	46	46	34	47	31	27	28	43	35	33	32	34	24	26	25	30	24	26	850	March
6	June	40	42	58	38	43	47	57	44	38	34	13	32	31	32	17	31	19	23	21	26	33	31	25	775	June
11	November	49	38	41	41	41	39	46	35	27	38	27	33	27	17	19	31	19	23	27	24	32	21	25	720	November
	total	574	573	590	551	546	509	489	445	452	422	307	353	373	344	296	349	284	286	331	330	376	330	382	9,492	total

Transition of fatal and non-fatal accidents in prefectures in code no. 0502 harbor transportation service (1999-2021)

code	Prefecture	1999	2000	2001	2002	2003	2004	2005	2006	2007	2008	2009	2010	2011	2012	2013	2014	2015	2016	2017	2018	2019	2020	2021	total	Prefecture
27	Osaka	118	125	102		130		96	78	72	83	61	54	55	55	56	49	37	43	40	33	28	36	49	1,400	Osaka
23	Aichi	57	77	52		57		37	40	47	31	17	35	32	31	34	44	28	24	25	33	45	40	39	825	Aichi
40	Fukuoka	23	35	25		40		28	20	26	20	20	25	22	29	21	21	24	31	26	34	33	28	38	569	Fukuoka
13	Tokyo	39	29	36		23		22	18	11	31	19	24	22	17	22	23	20	18	21	20	30	20	32	497	Tokyo
14	Kanagawa	80	63	80		59		64	61	69	71	39	49	47	35	29	44	34	26	36	33	36	39	29	1,023	Kanagawa
28	Hyogo	50	45	60		45		50	34	49	40	31	16	30	33	34	26	26	32	29	25	32	21	26	734	Hyogo
1	Hokkaido	23	23	24		31		18	21	24	23	23	15	23	25	16	21	12	9	8	13	17	18	21	408	Hokkaido
12	Chiba	15	18	25		12		16	19	19	16	9	11	12	9	6	15	4	9	14	9	9	10	15	272	Chiba

46	Kagoshima	16	14	15		13		11	13	13	12	10	13	17	13	8	9	10	12	22	12	26	10	14	283	Kagoshima	
47	Okinawa	10	7	8		11		12	10	12	3	3	12	8	4	6	5	8	4	8	5	9	7	14	166	Okinawa	
42	Nagasaki	7	3	7		4		7	4	1	6	5	6	4	3	6	5	4	5	8	11	13	7	10	126	Nagasaki	
37	Kagawa	8	11	9		6		11	12	7	12	4	8	8	7	8	7	11	11	9	9	12	7	9	186	Kagawa	
34	Hiroshima	26	20	24		12		18	17	26	12	15	13	12	9	12	13	13	18	7	21	16	20	8	332	Hiroshima	
38	Ehime	7	13	16		14		6	10	9	6	6	4	9	10	4	7	10	4	7	3	8	7	8	168	Ehime	
4	Miyagi	6	5	11		12		9	8	4	9	4	12	16	11	1	6	1		7	11	10	4	8	155	Miyagi	
8	Ibaraki	2	5	5		8		4	8	2	3	2	7	6	5	1	3	5	5	4	7	2	2	7	93	Ibaraki	
7	Fukushima	2		1		1		4	2	2	2	1	6	2	5			2	2	3	3	3	2	6	49	Fukushima	
22	Shizuoka	14	14	15		10		17	18	14	10	6	12	10	11	5	6	6	6	10	6	10	10	5	215	Shizuoka	
35	Yamaguchi	11	7	9		5		8	9	4	6	1	2	4	2	1	5	2	4	5	2	4	5	5	101	Yamaguchi	
15	Niigata	3	9	2		4		3	5	5	2	2	3	2	2	6	12	5	2	4	7	7	4	5	94	Niigata	
36	Tokushima	2	3	1		4		5	5	3	1	4	2	2	1	1	2	1		2	1		2	5	47	Tokushima	
24	Mie	3	7	5		6		9	2	9	2	7	2	4	5	2	3	4	2	8	5	3	5	4	97	Mie	
33	Okayama	10	6	13		7		8	8	4	2	2	8	4	3	1	3	1	3	3	6	3	4	3	102	Okayama	
18	Fukui	3	2	4		3		3	2	1		2		1	1	1	1		3	5	2	1	1	3	39	Fukui	
44	Oita	3	5	2		3		3	1	1				3	1	1	2		2	3		3	3	3	39	Oita	
43	Kumamoto	5	1	3		2			3	1	2			2		1		2	3	3	4		3	3	38	Kumamoto	
2	Aomori	7	1	3		2		5	3	4	5	2	2		4	1	2	3	2	2	2	3	4	2	59	Aomori	
30	Wakayama	5	4	9		3		3	1	5	1	4		4	1	2	1	2		1		2	3	2	53	Wakayama	
31	Tottori	2				1			5	2		1	2	4	1		2			1	1	2	1	2	27	Tottori	
45	Miyazaki	1	3	4					1	1		1								1	2	2		2	18	Miyazaki	
17	Ishikawa		3	5		4		1	2	1	2		2		2	3	4				2	1	2	2	1	37	Ishikawa

41	Saga	2	2	1		3		1	3	1	1		1		1	1	3		1	2	4	1	2	1	31	Saga	
16	Toyama		2	2		3		2		1	1		1	3	5	1	1	1	1	2	2			1	29	Toyama	
5	Akita	3	2	2		1		2			3	1	2	1			1	3	1	1		1	1	1	26	Akita	
3	Iwate	3	2	3		2		2		1		1	1	1		1	1	1		1				1	21	Iwate	
39	Kochi	6	3	4		4		1			2		2	1		1	1	2			2	1	1		31	Kochi	
26	Kyoto	1	4	3				2	2			1		1		2	1	1	1	1		2	1		23	Kyoto	
32	Shimane					1		1		1	1	1	1			1			1						8	Shimane	
6	Yamagata										1	1			1			1			1				5	Yamagata	
11	Saitama													1	1										2	Saitama	
21	Gifu											1			1										2	Gifu	
25	Shiga	1																							1	Shiga	
29	Nara																			1					1	Nara	
9	Tochigi																										Tochigi
10	Gunma																										Gunma
19	Yamanashi																										Yamanashi
20	Nagano																										Nagano
	total	574	573	590		546		489	445	452	422	307	353	373	344	296	349	284	286	331	330	376	330	382	8,432	total	

Data source : <https://anzeninfo.mhlw.go.jp/user/anzen/tok/anst00.htm>

Return to [https://www.jisha.or.jp/english/statistics/202211\\_23.html](https://www.jisha.or.jp/english/statistics/202211_23.html)