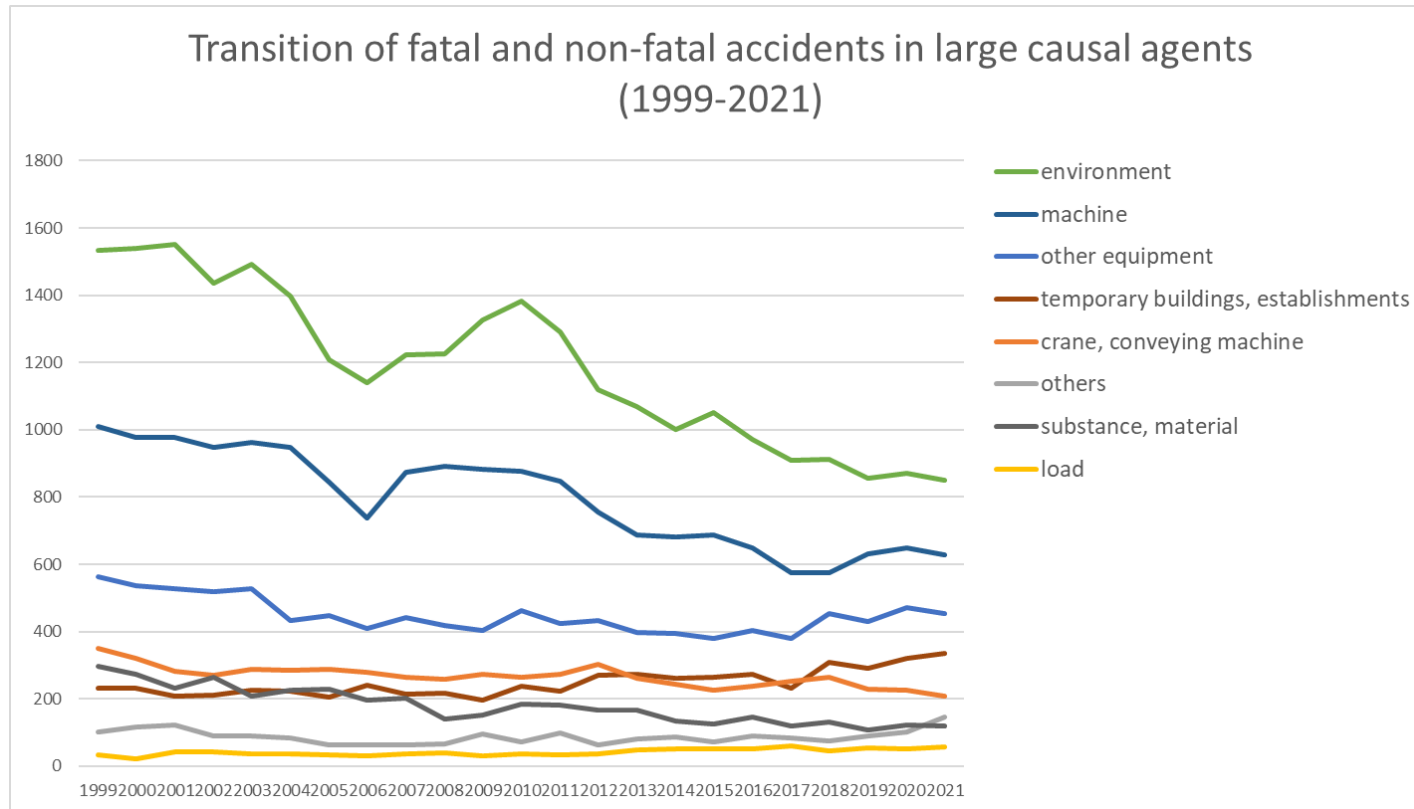
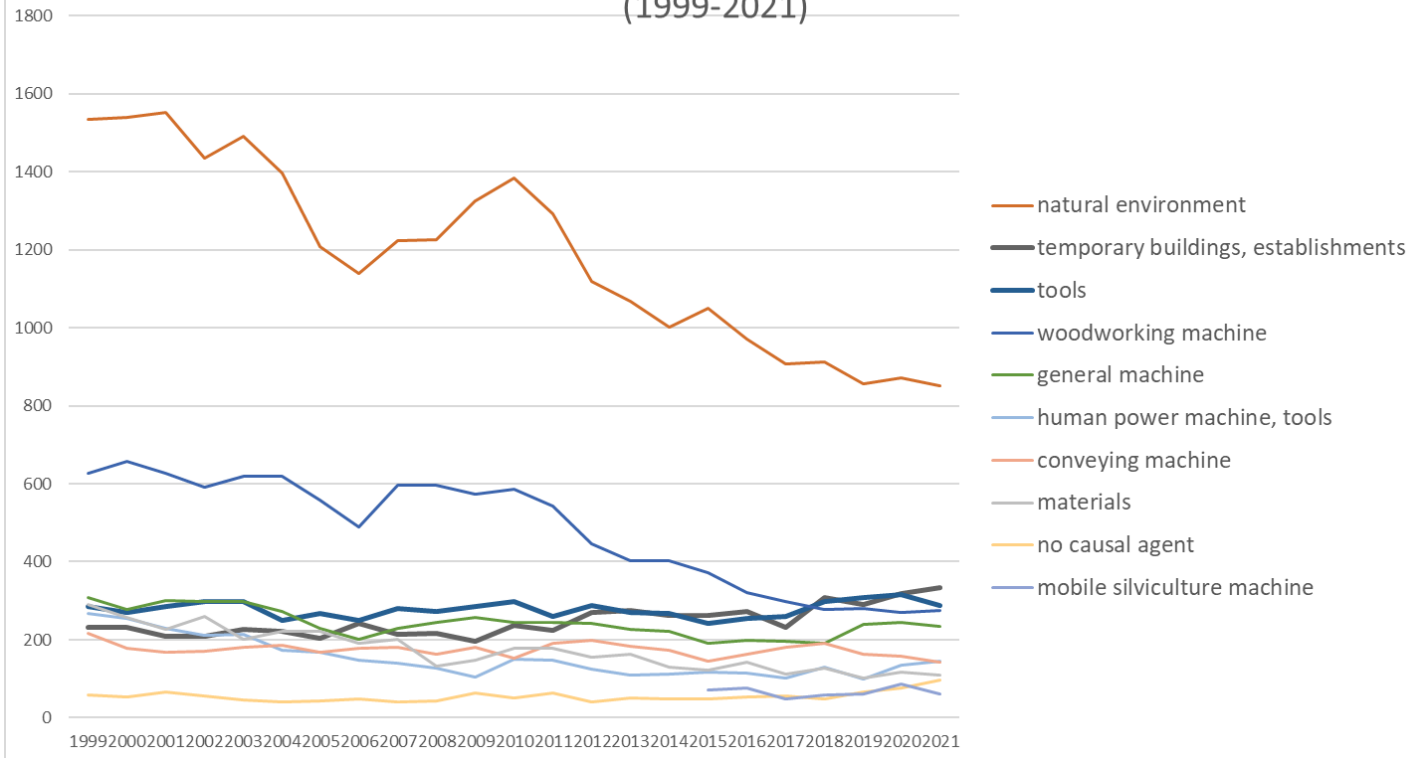


Transition of fatal and non-fatal accidents in each element like as causal agents, type of accidents, etc. in code no. 06 agriculture (1999-2021)



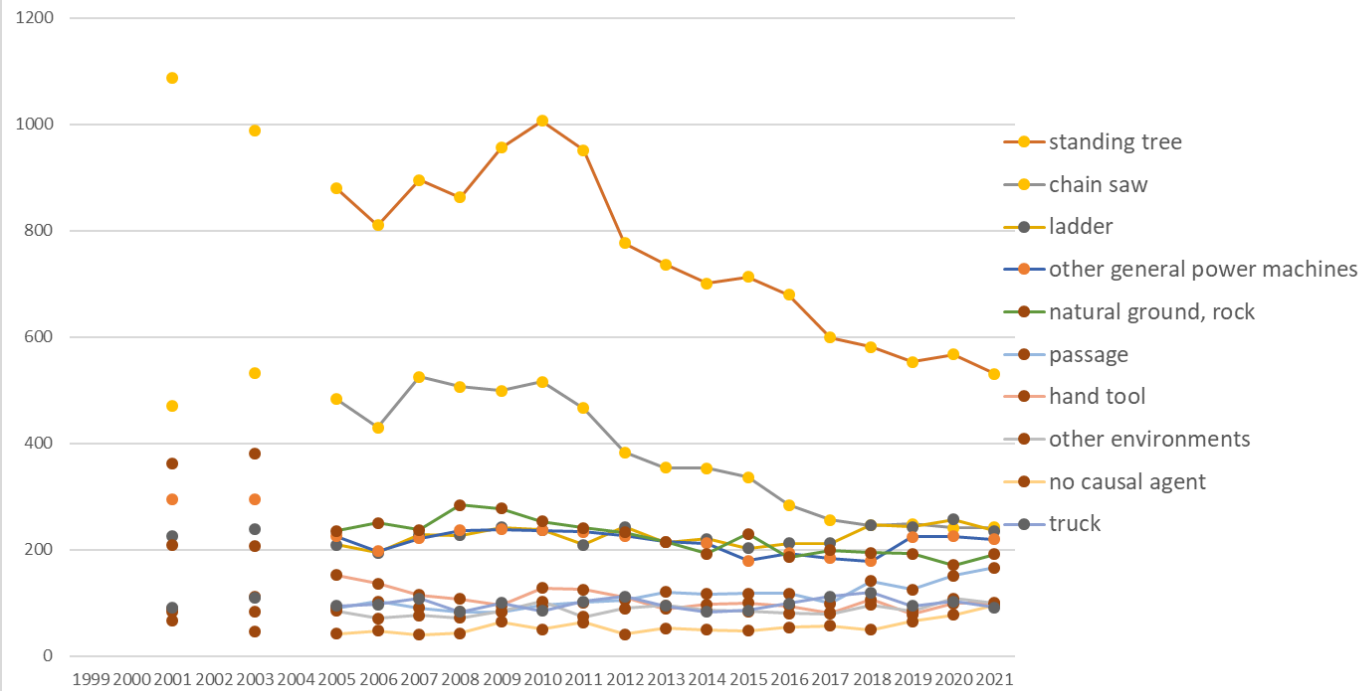
Transition of fatal and non-fatal accidents in large causal agents in code no. 06 agriculture (1999-2021)

Transition of fatal and non-fatal accidents in top 10 middle causal agents
(1999-2021)



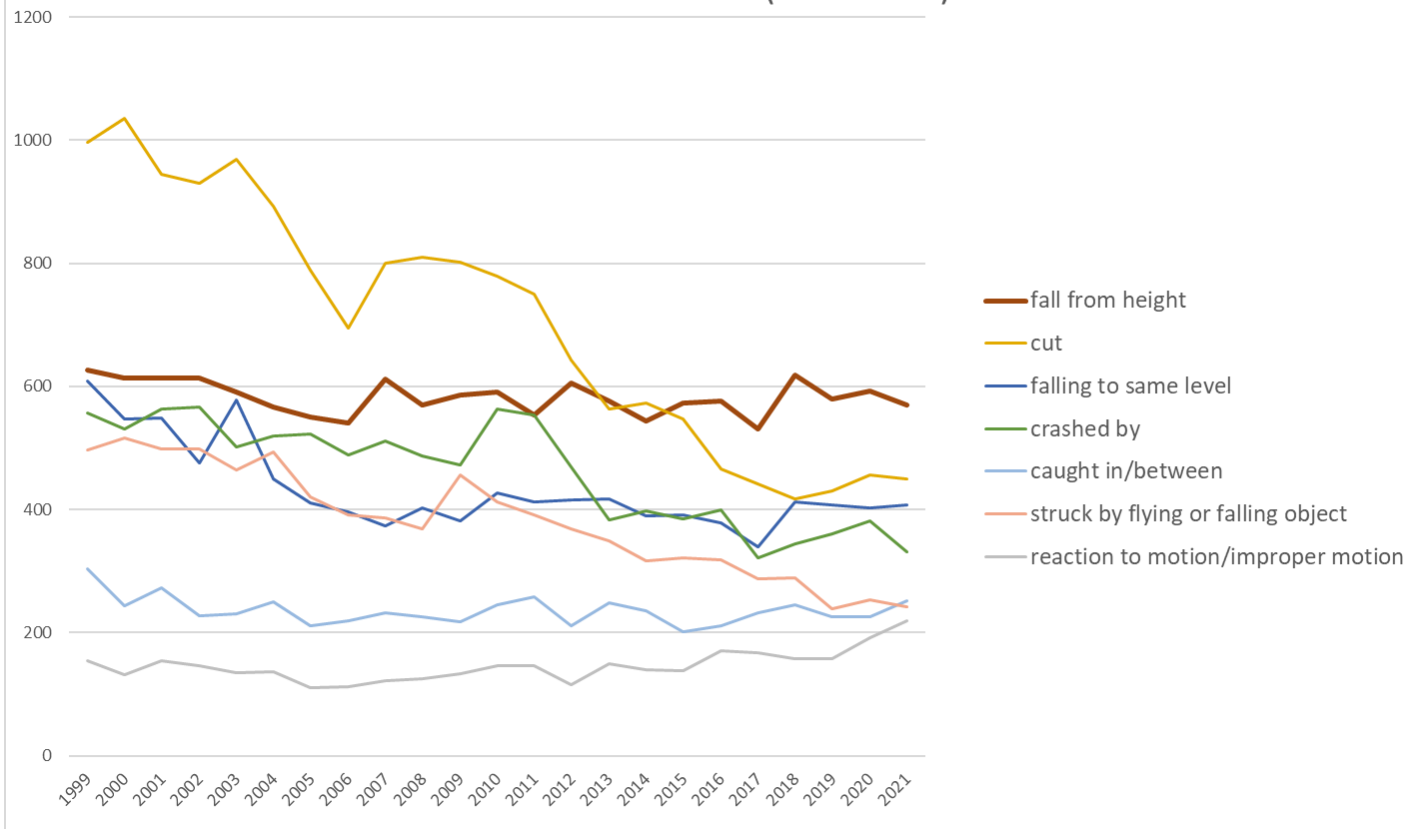
Transition of fatal and non-fatal accidents in middle causal agents in code no. 06 agriculture (1999-2021)

Transition of fatal and non-fatal accidents in top 10 small causal agents (1999-2021)



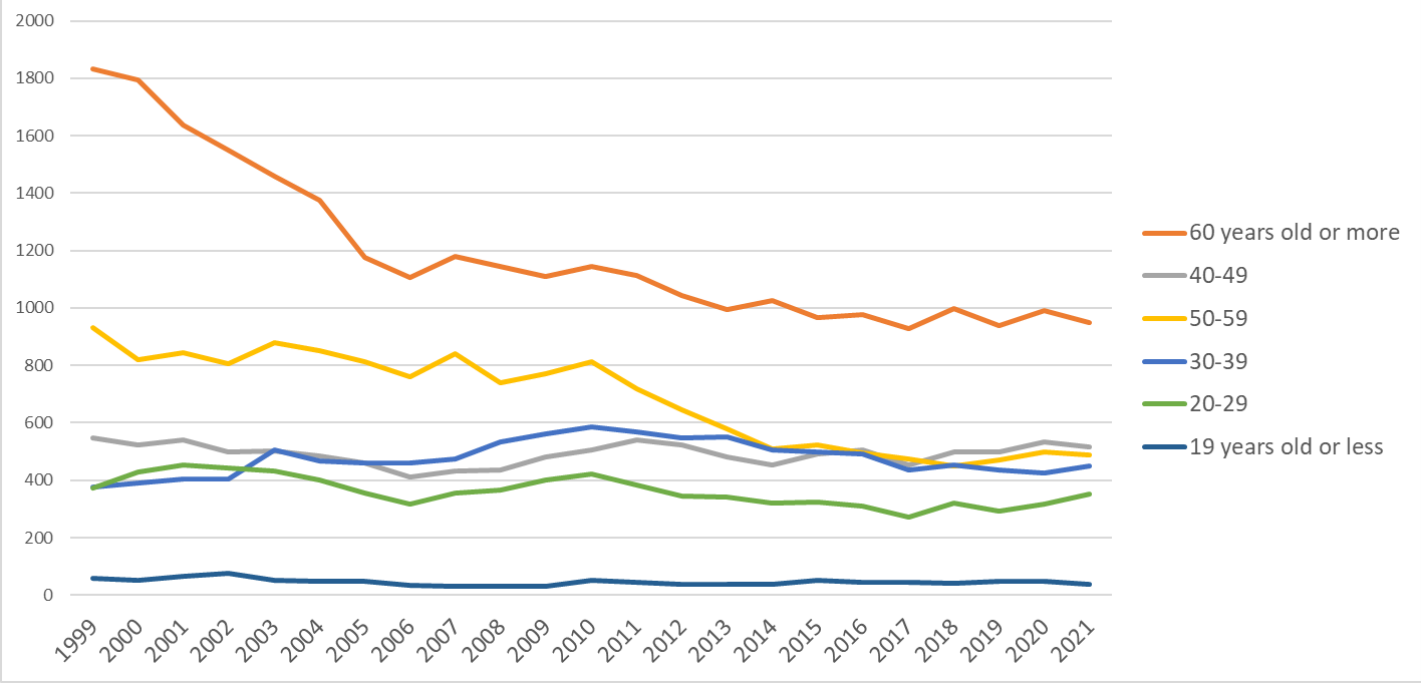
Transition of fatal and non-fatal accidents in small causal agents in code no. 06 agriculture (1999-2021)

Transition of fatal and non-fatal accidents in top 7 type of accidents
(1999-2021)



Transition of fatal and non-fatal accidents in type of accidents in code no. 06 agriculture (1999-2021)

Transition of fatal and non-fatal accidents in workers ages (1999-2021)



Transition of fatal and non-fatal accidents in workers ages in code no. 06 agriculture (1999-2021)

02	falling to same level	609	547	548	475	578	449	410	396	373	403	382	427	413	415	418	389	391	378	340	412	408	402	408	9,971	falling to same level
06	crashed by	557	530	563	566	502	520	522	488	511	487	473	563	554	469	383	397	384	399	322	344	361	382	331	10,608	crashed by
07	caught in/between	304	243	273	228	230	250	211	220	232	225	218	246	259	211	249	236	201	212	232	245	225	226	252	5,428	caught in/between
04	struck by flying or falling object	496	516	498	499	464	493	420	392	386	369	456	412	391	368	349	317	321	318	288	289	239	253	242	8,776	struck by flying or falling object
19	reaction to motion/improper motion	155	131	155	146	135	137	111	113	122	126	133	147	146	116	150	140	138	170	167	157	157	191	219	3,362	reaction to motion/improper motion
03	crash	125	117	120	102	113	80	100	89	93	84	85	95	92	98	101	89	88	83	98	95	104	104	100	2,255	crash
90	others	49	71	57	42	57	51	40	25	32	37	55	47	42	36	49	46	35	33	30	47	37	53	73	1,044	others
05	collapse	121	106	107	114	120	111	93	80	95	89	103	114	82	71	71	66	84	87	57	57	48	54	45	1,975	collapse
17	traffic accident (public road)	45	59	28	33	36	34	33	34	31	19	35	42	48	57	33	23	41	39	47	30	41	39	43	870	traffic accident (public road)
11	contact to high/low-temperature	13	14	12	10	10	14	10	8	13	17	7	30	21	24	21	24	28	35	33	46	33	31	30	484	contact to high/low-temperature
09	injury to the sole of the foot	9	10	7	8	11	18	8	5	8	7	10	15	4	10	12	3	9	10	9	2	13	11	14	213	injury to the sole of the foot
12	contact to harmful substance	1	10	3	3	4	4	7	3	4	3	4	2	5	6	2	4	8	3	8	5	7	9	13	118	contact to harmful substance
99	unclassifiable	5	7	12	4	7	7	2	3	2	3	1	5	3	4	2	2	4	4			1	1	3	82	unclassifiable
10	drown				1		1	1						3		3			3	1				1	14	drown
14	explosion	1	1								1				1					1			1	1	7	explosion

16	fire	3	1	1	1		1	2		1	1	3	1			1		1	1	2		2	1		23	fire
18	traffic accident (others)	3	1				1	2	3		2	1	1	1	3		1			1			2		22	traffic accident (others)
13	electric shock	1		2		1		2	1		1		1		4				4			1	2		20	electric shock
15	burst					1		1																	2	burst
	total	4,120	4,013	3,944	3,775	3,828	3,630	3,313	3,095	3,315	3,252	3,354	3,518	3,367	3,142	2,984	2,854	2,853	2,821	2,608	2,764	2,686	2,810	2,795	74,841	total

Transition of fatal and non-fatal accidents in workers ages in code no. 06 agriculture (1999-2021)

code	Age	1999	2000	2001	2002	2003	2004	2005	2006	2007	2008	2009	2010	2011	2012	2013	2014	2015	2016	2017	2018	2019	2020	2021	total	Age
6	60 years old or more	1,833	1,794	1,636	1,549	1,459	1,374	1,177	1,107	1,181	1,145	1,111	1,143	1,115	1,045	993	1,027	967	977	929	997	938	991	948	27,436	60 years old or more
4	40-49	546	523	540	497	502	485	460	412	432	437	482	504	539	524	482	453	490	504	454	499	497	532	516	11,310	40-49
5	50-59	932	821	844	807	878	853	813	762	842	741	771	812	718	645	579	510	523	494	473	451	472	497	489	15,727	50-59
3	30-39	376	392	406	404	506	467	459	461	473	533	560	585	568	547	550	507	499	490	436	454	437	424	451	10,985	30-39
2	20-29	374	430	454	442	431	402	357	318	355	366	400	422	383	345	342	319	323	311	271	321	294	318	353	8,331	20-29
1	19 years old or less	59	53	64	76	52	49	47	35	32	30	30	52	44	36	38	38	51	45	45	42	48	48	38	1,052	19 years old or less
	total	4,120	4,013	3,944	3,775	3,828	3,630	3,313	3,095	3,315	3,252	3,354	3,518	3,367	3,142	2,984	2,854	2,853	2,821	2,608	2,764	2,686	2,810	2,795	74,841	total

Transition of fatal and non-fatal accidents in workers scales in code no. 06 agriculture (1999-2021)

code	Workers scale	1999	2000	2001	2002	2003	2004	2005	2006	2007	2008	2009	2010	2011	2012	2013	2014	2015	2016	2017	2018	2019	2020	2021	total	Workers scale
1	9 workers or less	2,279	2,269	2,222	2,063	2,043	1,969	1,892	1,789	1,927	1,850	1,860	1,930	1,808	1,697	1,691	1,618	1,542	1,525	1,461	1,523	1,475	1,551	1,477	41,461	9 workers or less
2	10-29	952	898	891	905	948	835	744	691	785	780	839	839	875	842	774	741	752	809	734	767	729	792	824	18,746	10-29
3	30-49	445	397	417	406	437	416	354	333	314	310	331	370	341	284	264	268	320	259	240	263	270	268	284	7,591	30-49
4	50-99	298	322	295	305	303	309	250	207	222	229	260	292	274	241	200	164	179	159	109	136	140	139	151	5,184	50-99
5	100-299	140	124	115	96	95	98	71	73	67	80	62	83	68	75	49	59	55	61	61	67	65	56	52	1,772	100-299

6	300 workers or more	6	3	4		2	3	2	2		3	2	4	1	3	6	4	5	8	3	8	7	4	7	87	300 workers or more
	total	4,120	4,013	3,944	3,775	3,828	3,630	3,313	3,095	3,315	3,252	3,354	3,518	3,367	3,142	2,984	2,854	2,853	2,821	2,608	2,764	2,686	2,810	2,795	74,841	total

Transition of fatal and non-fatal accidents in months in code no. 06 agriculture (1999-2021)

code	Month	1999	2000	2001	2002	2003	2004	2005	2006	2007	2008	2009	2010	2011	2012	2013	2014	2015	2016	2017	2018	2019	2020	2021	total	Month
10	October	415	370	418	386	424	334	292	308	321	303	341	328	339	317	279	284	283	267	236	253	244	268	313	7,323	October
7	July	391	389	350	361	392	321	322	280	284	293	283	319	301	307	288	270	260	251	233	273	246	239	260	6,913	July
11	November	377	339	407	345	305	362	335	306	345	292	350	330	328	269	303	256	276	273	243	264	253	275	254	7,087	November
8	August	345	397	361	323	343	281	305	259	285	251	290	328	307	280	240	235	233	239	236	233	221	249	244	6,485	August
3	March	317	347	291	302	286	317	279	249	261	254	267	294	271	268	278	184	219	250	192	193	204	208	243	5,974	March
6	June	338	326	375	352	284	300	281	264	284	264	278	315	290	246	238	260	237	241	218	238	227	228	241	6,325	June
5	May	325	311	294	262	286	267	243	217	226	246	252	279	236	249	230	211	257	232	204	214	207	237	221	5,706	May
12	December	345	343	312	321	331	341	237	261	285	266	268	262	271	252	239	249	228	222	222	219	205	217	215	6,111	December
9	September	341	344	331	315	399	357	315	299	279	341	296	338	287	278	271	277	258	236	251	251	274	251	209	6,798	September
2	February	310	296	291	279	284	301	227	219	233	242	278	249	246	233	193	180	199	234	213	207	176	222	204	5,516	February
4	April	325	276	286	275	250	219	245	203	247	259	226	260	228	194	220	219	193	193	171	209	216	222	197	5,333	April
1	January	291	275	228	254	244	230	232	230	265	241	225	216	263	249	205	229	210	183	189	210	213	194	194	5,270	January
	total	4,120	4,013	3,944	3,775	3,828	3,630	3,313	3,095	3,315	3,252	3,354	3,518	3,367	3,142	2,984	2,854	2,853	2,821	2,608	2,764	2,686	2,810	2,795	74,841	total

Transition of fatal and non-fatal accidents in prefectures in code no. 06 agriculture (1999-2021)

code	Prefecture	1999	2000	2001	2002	2003	2004	2005	2006	2007	2008	2009	2010	2011	2012	2013	2014	2015	2016	2017	2018	2019	2020	2021	total	Prefecture
1	Hokkaido	362	289	293		297		300	281	307	263	264	287	249	236	228	269	220	226	221	201	233	181	189	5,396	Hokkaido
22	Shizuoka	139	149	172		147		131	131	137	128	131	142	172	132	138	106	120	115	109	126	100	142	144	2,811	Shizuoka
45	Miyazaki	154	155	132		139		107	109	124	124	108	133	139	123	135	108	144	115	101	110	130	121	131	2,642	Miyazaki

30	Wakayama	140	141	142		191		161	116	134	133	151	127	119	118	125	92	102	108	107	93	100	86	100	2,586	Wakayama
46	Kagoshima	96	103	88		95		93	72	106	83	115	107	98	94	96	86	92	100	103	87	104	104	97	2,019	Kagoshima
20	Nagano	115	94	104		114		77	108	81	86	101	115	103	104	93	107	101	83	68	79	82	92	93	2,000	Nagano
39	Kochi	159	159	133		152		153	122	141	134	118	141	127	120	90	105	106	94	84	78	81	96	90	2,483	Kochi
43	Kumamoto	115	104	90		96		81	58	82	93	69	78	93	91	79	73	81	80	71	89	100	75	84	1,782	Kumamoto
14	Kanagawa	48	54	59		52		37	46	48	52	56	58	49	56	58	51	76	61	63	86	75	88	83	1,256	Kanagawa
7	Fukushima	58	66	59		67		47	46	59	67	48	62	50	46	56	53	46	68	37	66	53	52	82	1,188	Fukushima
23	Aichi	121	88	86		83		67	69	68	67	67	71	88	66	70	82	58	65	66	56	71	82	80	1,571	Aichi
13	Tokyo	66	81	87		60		69	84	85	65	69	95	85	72	67	70	67	68	62	62	62	65	72	1,513	Tokyo
28	Hyogo	99	115	113		123		97	98	105	105	104	109	83	93	94	68	70	65	74	85	68	70	70	1,908	Hyogo
38	Ehime	101	104	114		119		96	73	90	88	89	92	97	79	85	76	71	67	77	75	83	71	70	1,817	Ehime
40	Fukuoka	85	80	105		91		95	66	79	72	73	82	71	70	74	66	69	74	70	69	56	86	70	1,603	Fukuoka
44	Oita	79	90	80		78		75	79	78	82	83	59	74	63	86	60	57	76	92	80	64	54	70	1,559	Oita
3	Iwate	94	94	91		86		77	71	92	69	82	89	83	87	77	81	59	77	67	53	56	69	69	1,623	Iwate
24	Mie	208	167	175		133		135	109	103	103	128	128	96	100	81	76	58	84	70	72	61	80	65	2,232	Mie
12	Chiba	32	72	57		38		35	39	48	49	58	44	55	48	47	44	49	58	37	58	49	67	65	1,049	Chiba
10	Gunma	71	55	58		71		51	51	61	55	69	86	71	74	49	56	57	60	52	56	60	66	63	1,292	Gunma
33	Okayama	114	117	119		99		110	94	91	86	76	69	90	73	64	51	74	67	48	57	63	49	60	1,671	Okayama
4	Miyagi	46	48	47		40		45	47	59	60	65	52	51	66	61	57	44	51	41	58	45	49	60	1,092	Miyagi
8	Ibaraki	40	52	58		49		39	48	44	49	47	53	48	54	41	57	49	47	41	46	46	78	59	1,045	Ibaraki
34	Hiroshima	177	150	137		118		98	76	98	79	84	105	96	71	83	66	94	81	65	60	61	61	58	1,918	Hiroshima
21	Gifu	135	136	146		145		126	128	126	144	102	119	104	77	88	85	80	80	71	86	78	64	57	2,177	Gifu
2	Aomori	92	57	58		38		36	30	52	47	49	49	50	47	48	46	40	46	51	53	63	53	53	1,058	Aomori
5	Akita	74	67	67		63		44	51	49	50	47	71	60	48	48	45	56	49	44	54	57	54	49	1,147	Akita
32	Shimane	96	107	85		74		65	67	68	60	81	75	87	66	62	74	64	56	47	33	51	47	48	1,413	Shimane

9	Tochigi	36	34	42		40		39	40	38	42	42	27	33	24	25	36	39	29	25	38	24	34	47	734	Tochigi
26	Kyoto	77	73	102		90		81	87	87	82	83	88	80	85	77	68	62	57	49	60	57	52	45	1,542	Kyoto
29	Nara	184	152	122		129		92	102	88	73	96	83	84	94	77	78	68	55	50	52	59	63	41	1,842	Nara
15	Niigata	82	71	53		62		42	40	37	44	38	41	55	39	40	32	36	36	37	35	24	34	40	918	Niigata
42	Nagasaki	49	36	49		51		36	26	30	43	43	50	42	56	53	32	50	34	53	50	39	51	40	913	Nagasaki
27	Osaka	33	29	37		51		29	25	28	35	38	32	29	44	26	24	21	37	41	28	29	25	40	681	Osaka
6	Yamagata	42	38	35		40		37	34	32	45	28	47	31	34	35	44	39	39	18	44	36	35	38	771	Yamagata
36	Tokushima	76	93	78		64		48	57	46	41	54	59	51	55	38	38	44	53	45	52	20	30	34	1,076	Tokushima
17	Ishikawa	53	65	68		46		47	31	36	41	37	43	28	34	32	24	30	20	27	32	28	26	32	780	Ishikawa
31	Tottori	53	59	49		46		32	31	26	33	38	36	37	44	33	28	32	28	24	24	17	33	30	733	Tottori
19	Yamanashi	31	49	43		47		26	31	29	31	38	23	37	35	26	27	29	32	21	25	26	24	28	658	Yamanashi
11	Saitama	28	38	39		30		24	19	31	27	33	36	39	20	17	28	22	26	29	31	33	38	28	616	Saitama
35	Yamaguchi	77	97	84		91		79	59	60	60	79	64	74	72	39	44	43	40	35	35	34	32	26	1,224	Yamaguchi
18	Fukui	50	49	51		41		33	32	32	39	25	38	36	21	31	27	25	29	24	22	21	33	17	676	Fukui
16	Toyama	31	32	39		37		38	31	22	38	45	36	25	35	31	28	23	24	25	20	20	21	17	618	Toyama
37	Kagawa	32	30	29		34		26	25	35	16	22	25	43	23	15	30	30	22	20	27	21	27	17	549	Kagawa
41	Saga	25	21	23		29		17	20	20	27	31	29	23	18	26	23	23	21	18	22	19	22	17	474	Saga
25	Shiga	35	44	35		36		27	30	14	33	42	49	29	31	27	23	18	14	20	22	13	18	16	576	Shiga
47	Okinawa	10	9	11		6		13	6	9	9	8	14	3	4	13	10	15	4	8	17	14	10	11	204	Okinawa
	total	4,120	4,013	3,944		3,828		3,313	3,095	3,315	3,252	3,354	3,518	3,367	3,142	2,984	2,854	2,853	2,821	2,608	2,764	2,686	2,810	2,795	67,436	total

Data source : <https://anzeninfo.mhlw.go.jp/user/anzen/tok/anst00.htm>

Return to https://www.jisha.or.jp/english/statistics/202211_23.html