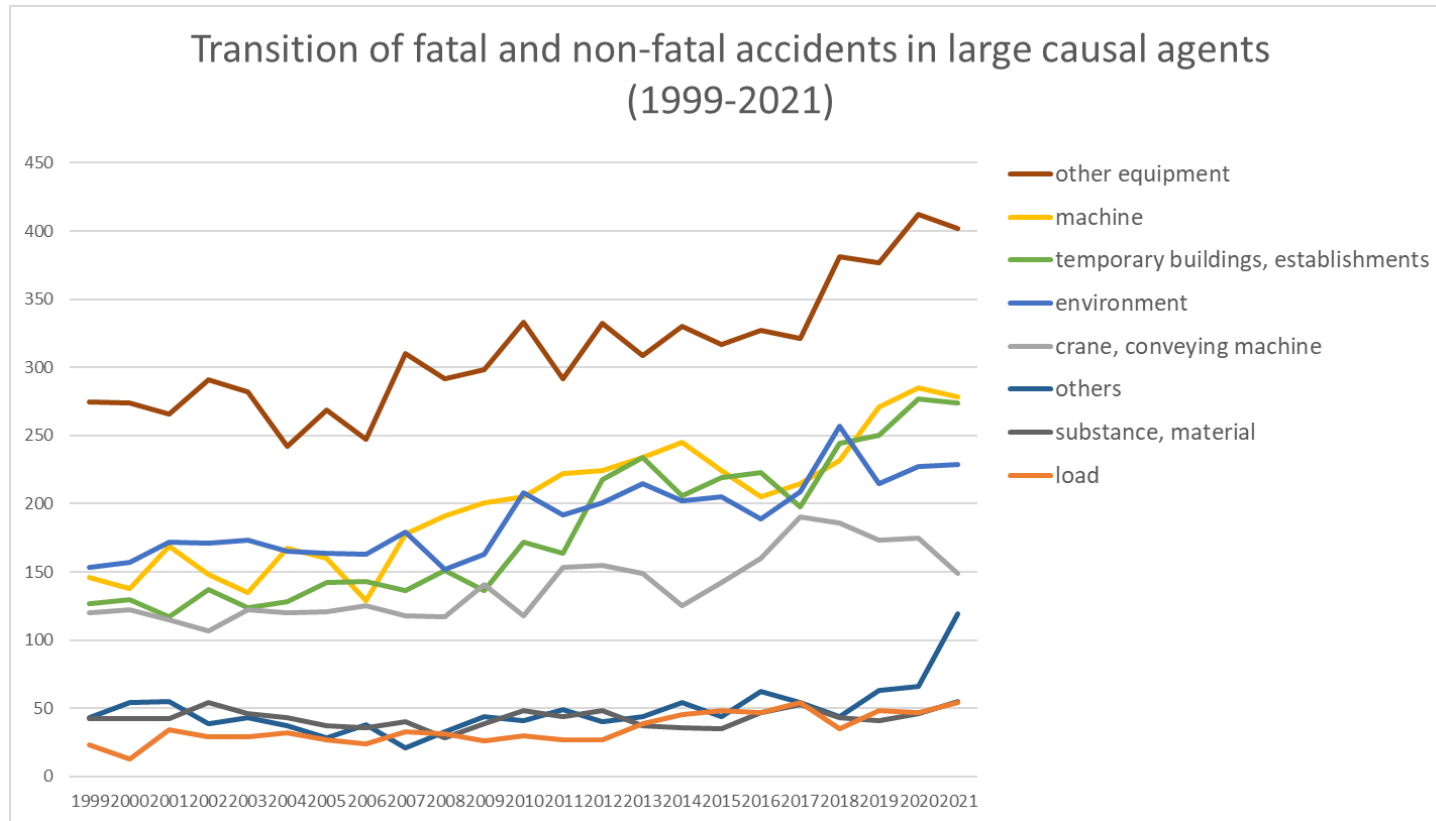
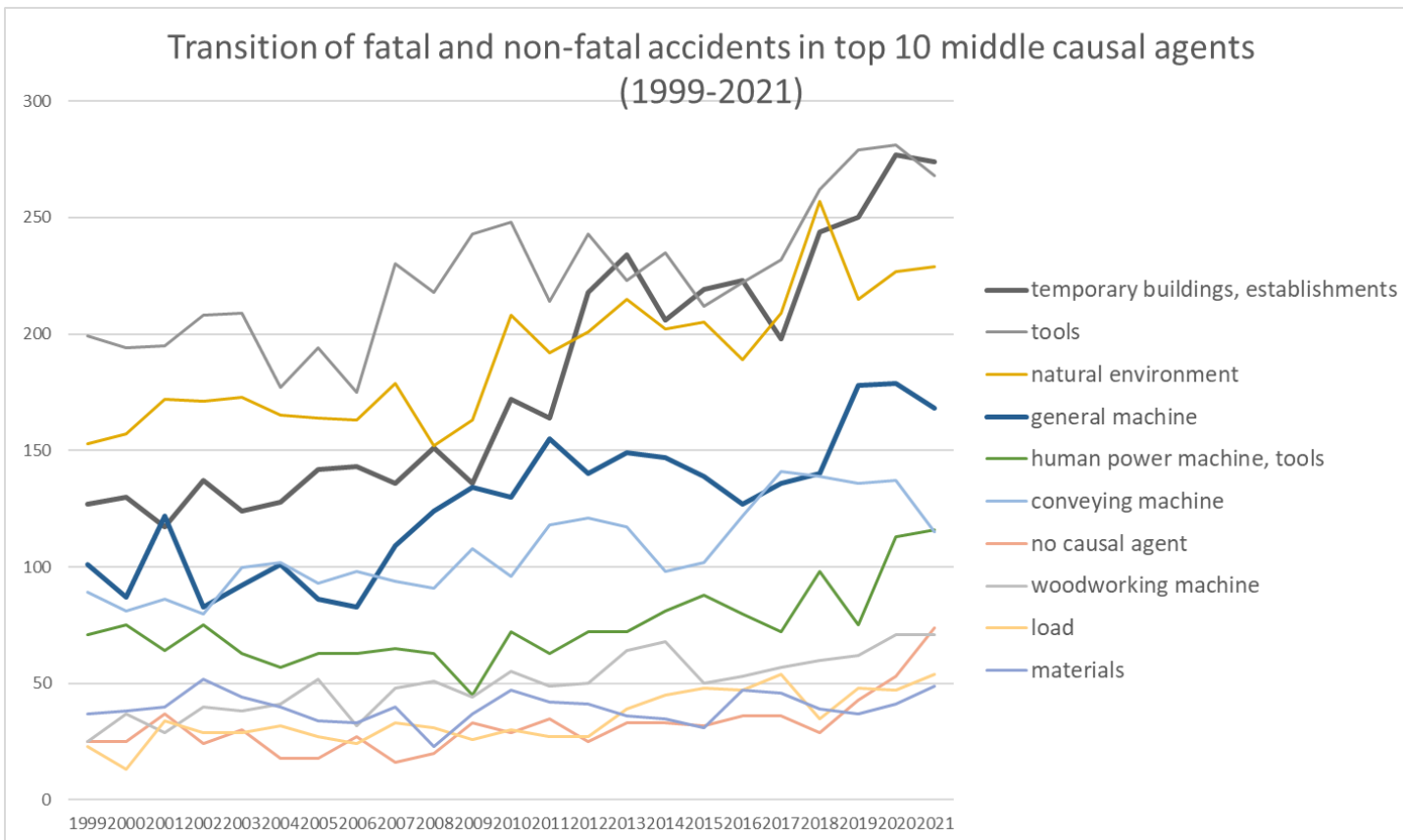


Transition of fatal and non-fatal accidents in each element like as causal agents, type of accidents, etc. in code no. 0601 agriculture (1999-2021)

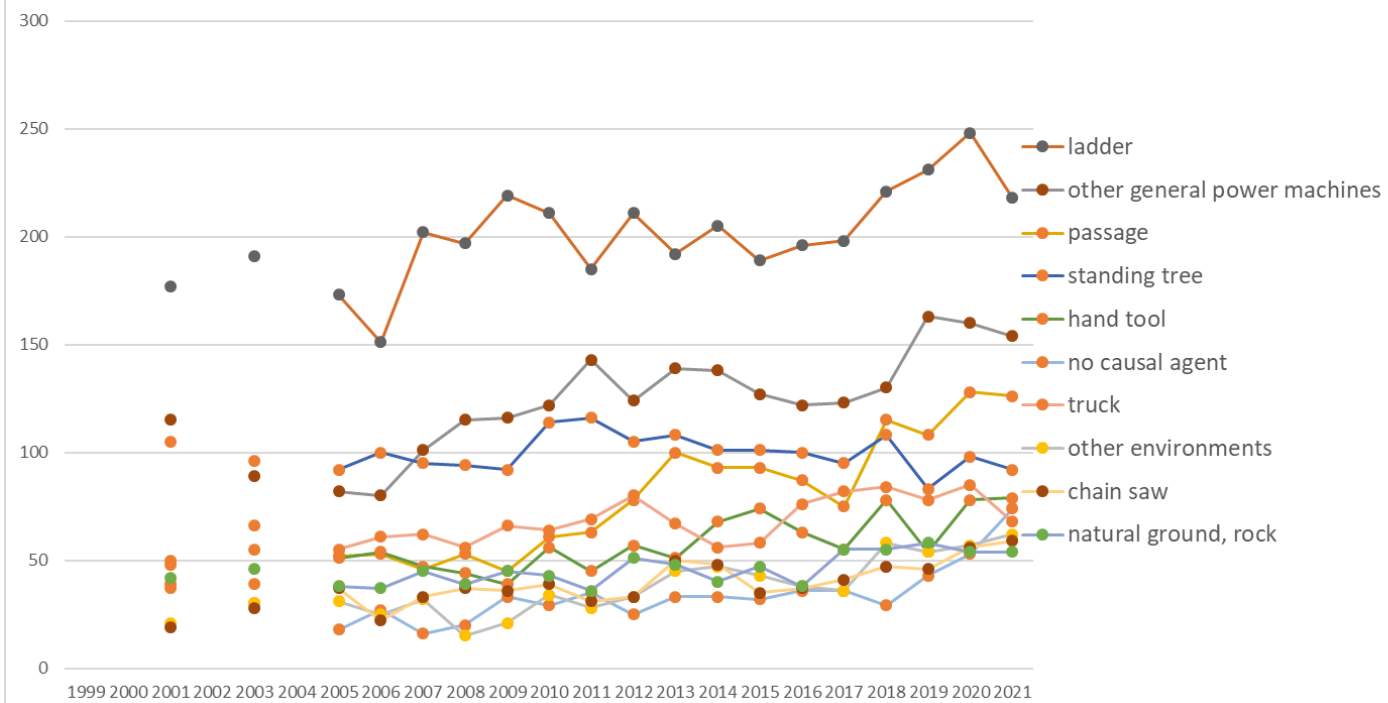


Transition of fatal and non-fatal accidents in large causal agents in code no. 0601 agriculture (1999-2021)



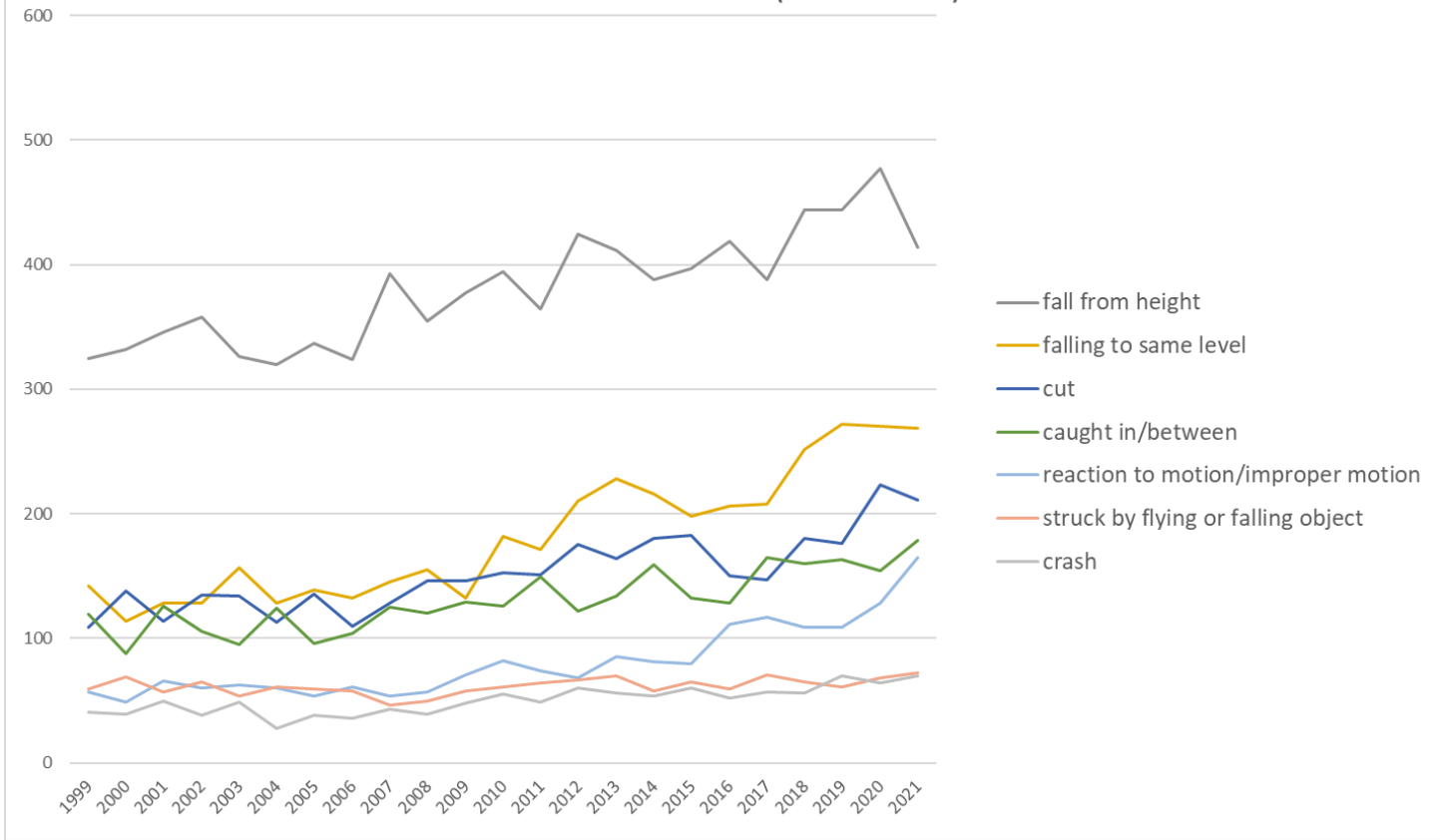
Transition of fatal and non-fatal accidents in middle causal agents in code no. 0601 agriculture (1999-2021)

Transition of fatal and non-fatal accidents in top 10 small causal agents (1999-2021)



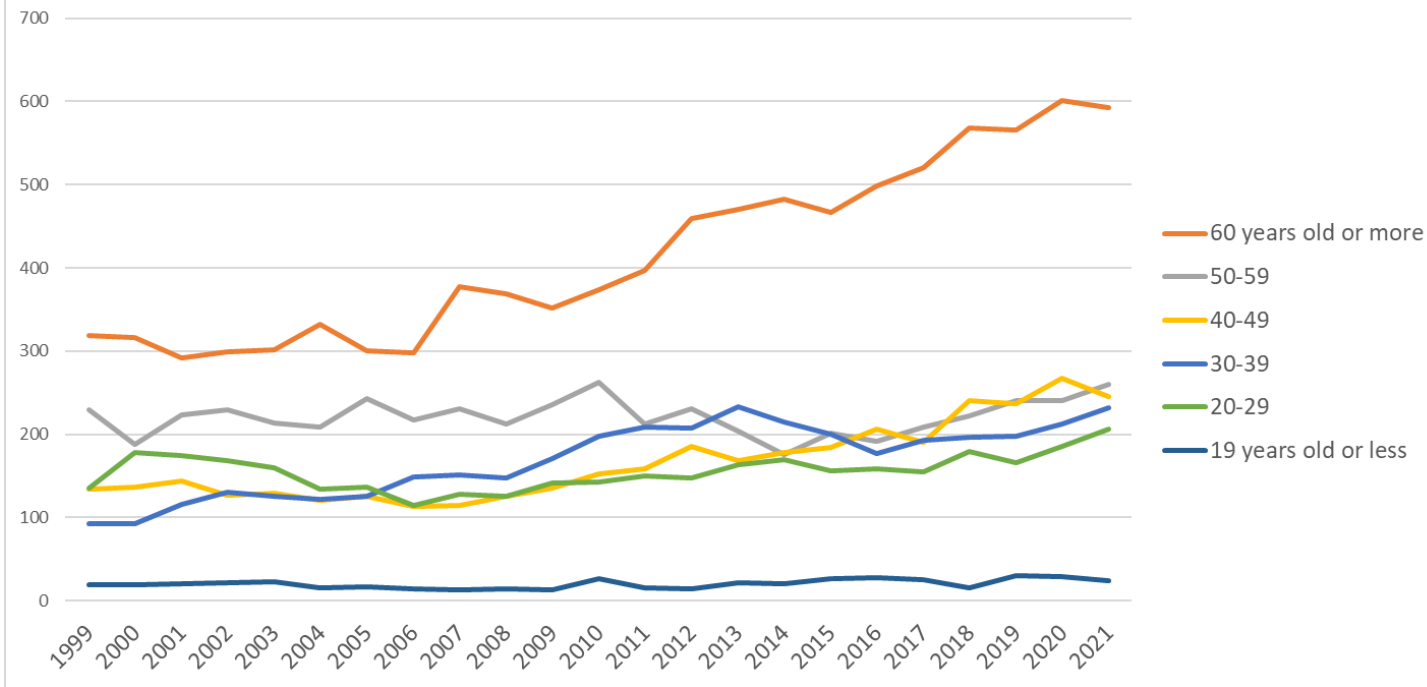
Transition of fatal and non-fatal accidents in small causal agents in code no. 0601 agriculture (1999-2021)

Transition of fatal and non-fatal accidents in top 7 type of accidents
(1999-2021)



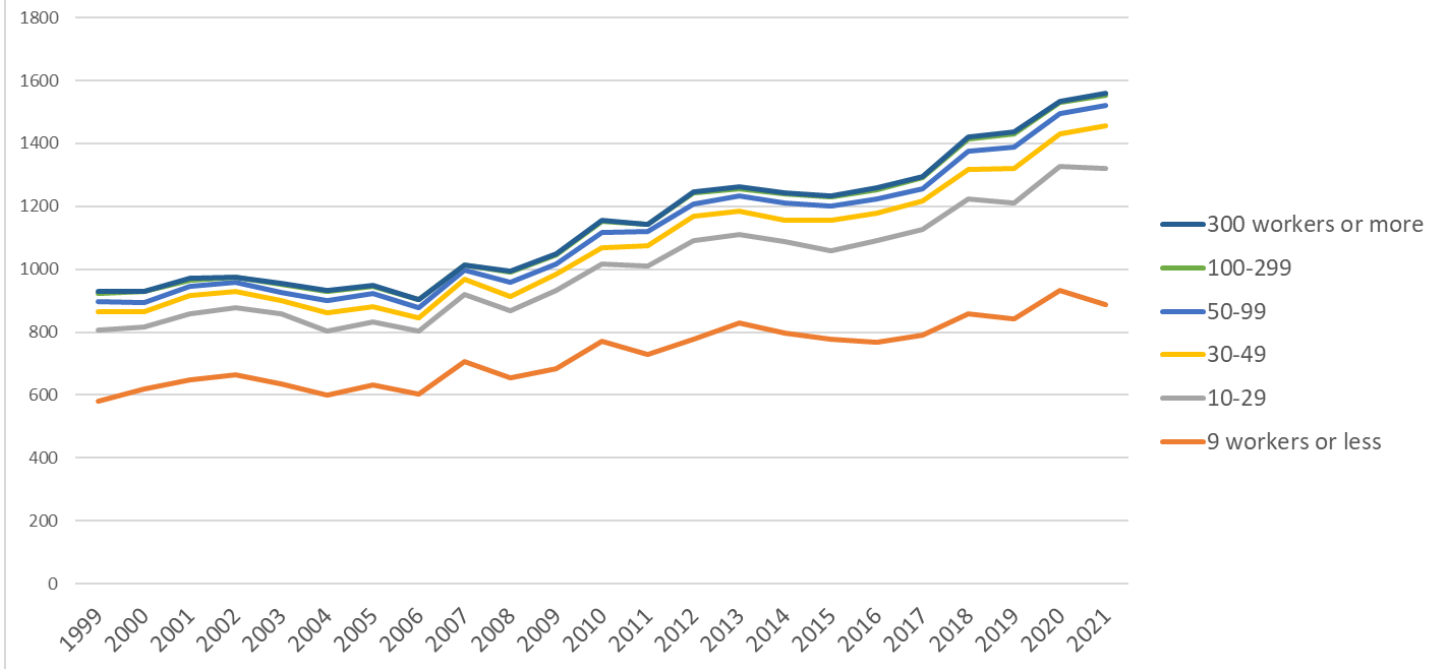
Transition of fatal and non-fatal accidents in type of accidents in code no. 0601 agriculture (1999-2021)

Transition of fatal and non-fatal accidents in workers ages (1999-2021)



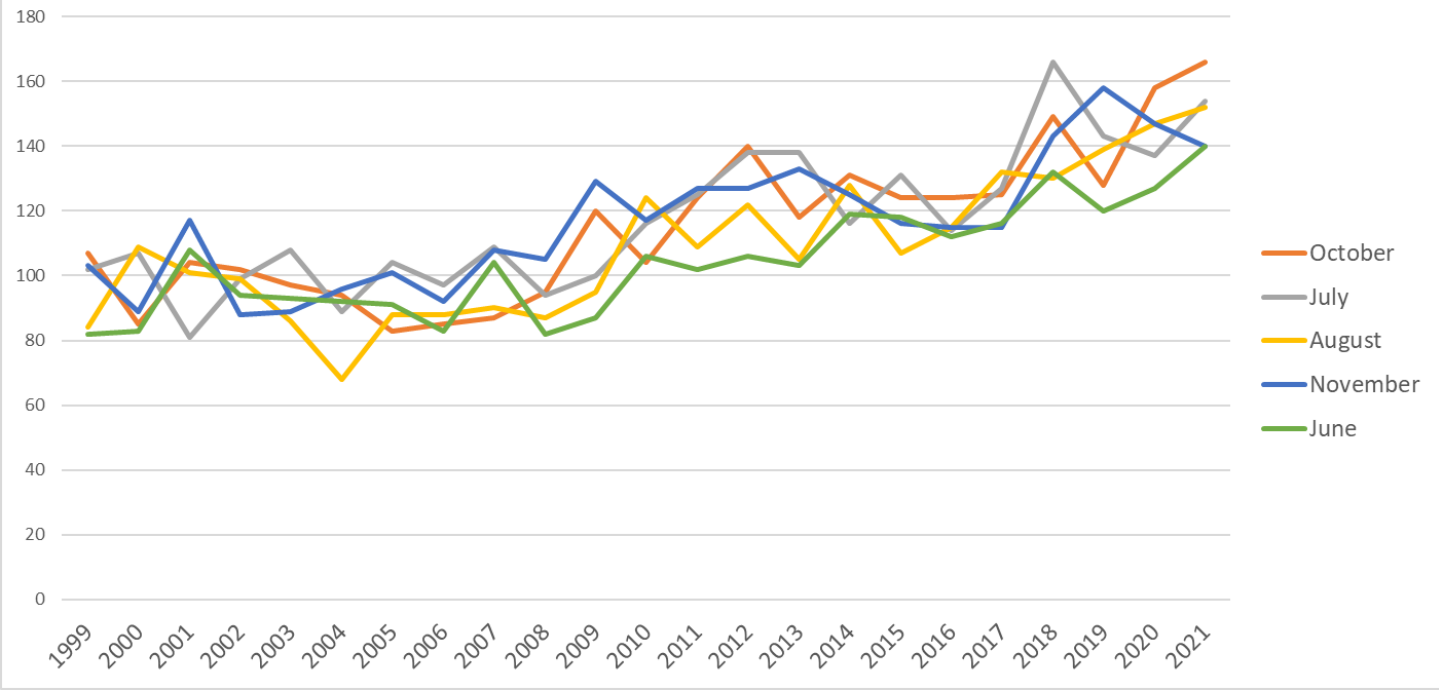
Transition of fatal and non-fatal accidents in workers ages in code no. 0601 agriculture (1999-2021)

Transition of fatal and non-fatal accidents in workers scales (1999-2021)



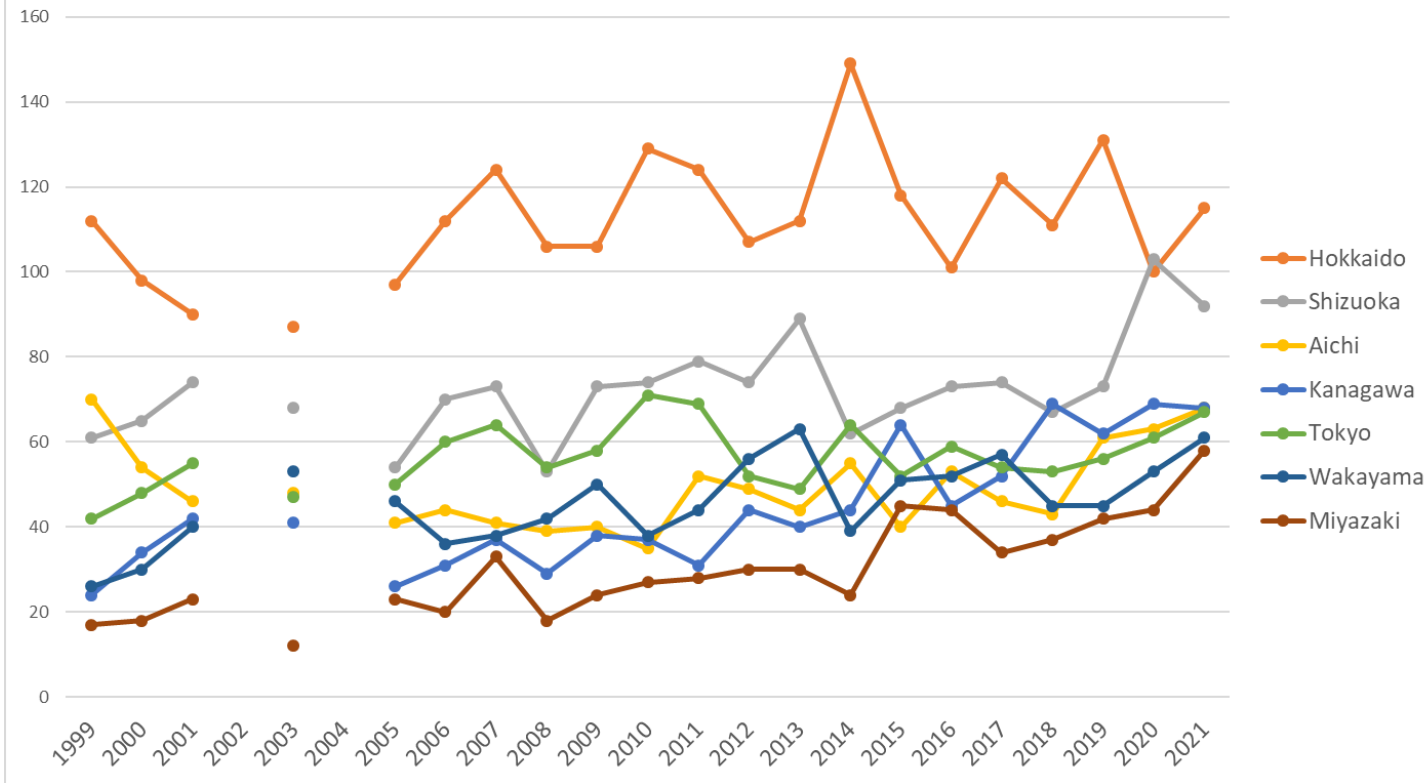
Transition of fatal and non-fatal accidents in workers scales in code no. 0601 agriculture (1999-2021)

Transition of fatal and non-fatal accidents in top 5 months (1999-2021)



Transition of fatal and non-fatal accidents in months in code no. 0601 agriculture (1999-2021)

Transition of fatal and non-fatal accidents in top 7 prefectures (1999-2021)



Transition of fatal and non-fatal accidents in prefectures in code no. 0601 agriculture (1999-2021)

Transition of fatal and non-fatal accidents in large causal agents in code no. 0601 agriculture (1999-2021)

code	Causal (L) agents	1999	2000	2001	2002	2003	2004	2005	2006	2007	2008	2009	2010	2011	2012	2013	2014	2015	2016	2017	2018	2019	2020	2021	total	Causal (L) agents
3	other equipment	275	274	266	291	282	242	269	247	310	292	298	333	292	332	309	330	317	327	321	381	377	412	402	7,179	other equipment
1	machine	146	138	169	148	135	167	160	129	178	191	201	205	222	224	234	245	224	205	215	232	271	285	278	4,602	machine
4	temporary buildings, establishments	127	130	117	137	124	128	142	143	136	151	136	172	164	218	234	206	219	223	198	244	250	277	274	4,150	temporary buildings, establishments

7	environment	153	157	172	171	173	165	164	163	179	152	163	208	192	201	215	202	205	189	209	257	215	227	229	4,361	environment
2	crane, conveying machine	120	122	115	107	122	120	121	125	118	117	141	118	153	155	149	125	142	160	190	186	173	175	149	3,203	crane, conveying machine
9	others	43	54	55	39	43	37	28	38	21	33	44	41	49	40	44	54	44	62	54	44	63	66	119	1,115	others
5	substance, material	42	42	42	54	46	43	37	36	40	28	39	48	44	48	37	36	35	47	53	43	41	46	55	982	substance, material
6	load	23	13	34	29	29	32	27	24	33	31	26	30	27	27	39	45	48	47	54	35	48	47	54	802	load
	total	929	930	970	976	954	934	948	905	1,015	995	1,048	1,155	1,143	1,245	1,261	1,243	1,234	1,260	1,294	1,422	1,438	1,535	1,560	26,394	total

Transition of fatal and non-fatal accidents in middle causal agents in code no. 0601 agriculture (1999-2021)

code	Causal (M) agents	1999	2000	2001	2002	2003	2004	2005	2006	2007	2008	2009	2010	2011	2012	2013	2014	2015	2016	2017	2018	2019	2020	2021	total	Causal (M) agents
41	temporary buildings, establishments	127	130	117	137	124	128	142	143	136	151	136	172	164	218	234	206	219	223	198	244	250	277	274	4,150	temporary buildings, establishments
37	tools	199	194	195	208	209	177	194	175	230	218	243	248	214	243	223	235	212	222	232	262	279	281	268	5,161	tools
71	natural environment	153	157	172	171	173	165	164	163	179	152	163	208	192	201	215	202	205	189	209	257	215	227	229	4,361	natural environment
16	general machine	101	87	122	83	92	101	86	83	109	124	134	130	155	140	149	147	139	127	136	140	178	179	168	2,910	general machine
36	human power machine, tools	71	75	64	75	63	57	63	63	65	63	45	72	63	72	72	81	88	80	72	98	75	113	116	1,706	human power machine, tools
22	conveying machine	89	81	86	80	100	102	93	98	94	91	108	96	118	121	117	98	102	122	141	139	136	137	115	2,464	conveying machine
92	no causal agent	25	25	37	24	30	18	18	27	16	20	33	29	35	25	33	33	32	36	36	29	43	53	74	731	no causal

																										agent
13	woodworking machine	25	37	29	40	38	41	52	32	48	51	44	55	49	50	64	68	50	53	57	60	62	71	71	1,147	woodworking machine
61	load	23	13	34	29	29	32	27	24	33	31	26	30	27	27	39	45	48	47	54	35	48	47	54	802	load
52	materials	37	38	40	52	44	40	34	33	40	23	37	47	42	41	36	35	31	47	46	39	37	41	49	909	materials
91	other causal agent	16	26	18	14	12	17	8	10	5	10	10	11	11	14	11	20	11	24	18	13	20	13	45	357	other causal agent
23	vehicle	19	34	27	18	16	16	19	20	18	16	29	18	29	24	22	21	33	27	46	35	26	26	29	568	vehicle
14	construction machine	6	6	11	16	3	14	13	8	16	10	13	14	10	26	16	14	23	18	19	18	20	19	27	340	construction machine
39	other equipments, facilities	5	4	5	6	9	7	11	8	14	11	9	10	13	14	13	13	15	19	16	19	21	16	17	275	other equipments, facilities
12	power transmission mechanism	4	4	5	4	1	7	6	3	4	4	6	4	4	7	3	10	5	5	2	4	5	11	7	115	power transmission mechanism
51	hazards, harmful substances	5	4	2	2	2	3	3	3		5	2	1	2	7	1	1	4		7	4	4	5	6	73	hazards, harmful substances
21	crane	12	7	2	9	6	2	9	7	6	10	4	4	6	10	10	6	7	11	3	12	11	12	5	171	crane
15	metal manufacturing machine	9	4	2	5	1	4	2	3	1	2	3	2	4	1	2	4	4	2	1	6	3	4	4	73	metal manufacturing machine
34	kiln, caldron		1	1	2					1			1					1	1			1	1	1	11	kiln, caldron
17	mobile silviculture machine																	3			2	2	1	1	9	mobile silviculture

611	load			34		29		25	22	33	31	25	27	26	26	36	40	47	45	50	34	45	45	53	673	load
379	other tools			13		18		20	21	27	19	22	34	29	30	29	24	22	24	34	39	46	33	47	531	other tools
911	other causal agent			18		12		8	10	5	10	10	11	11	14	11	20	11	24	18	13	20	13	45	284	other causal agent
416	working platform, boot board			17		30		19	22	24	24	23	29	31	33	34	35	36	37	43	42	46	38	42	605	working platform, boot board
418	building, establishment			29		28		33	30	30	35	29	37	33	52	52	32	37	51	32	38	49	42	39	708	building, establishment
419	other temporary buildings, establishments			14		11		20	16	15	21	23	24	19	24	28	23	28	27	32	36	24	31	37	453	other temporary buildings, establishments
362	human power hauling equipment			15		7		10	8	15	17	6	16	18	13	19	11	14	14	16	19	17	31	29	295	human power hauling equipment
231	cars, bus, motorcycle			26		15		17	18	17	12	25	17	27	20	20	18	28	24	38	29	21	25	24	421	cars, bus, motorcycle
521	metal material			8		10		6	13	7	10	5	7	11	13	9	7	6	10	14	13	12	14	22	197	metal material
229	other powered conveying machines			13		15		20	13	16	17	15	10	22	23	23	19	13	17	25	30	20	18	18	347	other powered conveying machines
413	stairs, landing stage			9		3		5	8	7	7	5	10	9	14	6	9	9	10	11	6	13	19	18	178	stairs, landing stage
391	other equipment, facilities			5		9		11	8	14	11	9	10	13	14	13	13	15	19	16	19	21	16	17	253	other equipment, facilities
224	conveyor			13		11		8	17	9	12	16	9	11	7	11	11	19	12	10	8	15	13	15	227	conveyor
715	high/cold temperature environment			2		1		3	1	5	3	4	17	9	10	10	13	14	11	22	36	19	16	14	210	high/cold temperature environment
523	stone, sand, substance			13		12		10	5	5	4	9	18	10	7	8	5	5	9	8	8	6	9	14	165	stone, sand, substance

222	forklift			10		6		9	5	7	5	10	11	14	8	14	9	8	16	18	14	20	15	13	212	forklift
142	excavating machine			4		2		9	4	3	3	7	2	4	9	5	5	9	2	5	3	8	6	12	102	excavating machine
165	food manufacturing machine			2				3	2	4	4	12	4	4	9	8	6	8	5	8	6	5	15	10	115	food manufacturing machine
522	lumber, bamboo			14		14		16	12	21	6	16	18	15	14	5	15	16	21	19	10	14	13	9	268	lumber, bamboo
415	roof, beam, haze, crossbeam, principal rafter			3		6		7	7	7	4	4	6	6	11	7	6	10	8	3	2	2	9	8	116	roof, beam, haze, crossbeam, principal rafter
121	power transmission mechanism			5		1		6	3	4	4	6	4	4	7	3	10	5	5	2	4	5	11	7	96	power transmission mechanism
141	leveling, transporting or loading machine			2		1		1	3	6	2	4	8	3	6	6	4	5	6	6	9	6	5	7	90	leveling, transporting or loading machine
139	other woodworking machines			6		7		6	8	10	10	7	11	10	8	8	10	8	12	11	11	11	9	6	169	other woodworking machines
131	circular sawing machine			4		3		8	2	5	4	1	4	7	8	6	10	6	4	3	2	5	5	6	93	circular sawing machine
212	mobile crane			1		4		5	6	5	7	1	4	4	9	6	3	5	9	2	10	6	6	5	98	mobile crane
239	other vehicles			1		1		2	2	1	4	4	1	2	4	2	3	5	3	7	6	5	1	5	59	other vehicles
149	other construction machines			3				1	1	5	2	1	2		2	2		5	3	1	5	1	3	5	42	other construction machines
714	abnormal environment			1						2	1	1		1						1			1	5	13	abnormal environment
361	human power cranes									1					1	1						2	2	5	12	human power cranes
529	other materials			5		8		2	3	7	3	7	4	6	7	14	8	4	7	5	8	5	5	4	112	other materials

162	mixer, grinder			1	3			1	4	4	6	3	7	4	2	2	4		2	3	7	4	4	61	mixer, grinder
153	grinding machine, buffing machine			1	1		1	1	1	1	3	2	4		2	3	3	2	1	5	3	4	4	42	grinding machine, buffing machine
519	other hazards, harmful substances			1	2			3		1		1	1	2	1		1		3	3	2	2	4	27	other hazards, harmful substances
411	scaffolding			5	5		5	6	5	2	2	4	1	3	2	3	3	1	1	2	3	1	3	57	scaffolding
372	slinging tool			5			1	3	1	2	2	3		2	2	6	1	2		2	2		3	37	slinging tool
363	human power machine			1	1		2	1	2	2				1	1	2		3	1	1	2	2	3	25	human power machine
146	vehicle for high lift work			2			2		1	3	1	1	3	9	3	3	3	5	6		4	4	2	52	vehicle for high lift work
713	water			1									2	2	4	1		2			1	1	2	16	water
414	opening			1	2		1	1	2	5	5	1	2	3	5	5	3	2	1	3	5	9	1	57	opening
612	machine/equipment as load						2	2			1	3	1	1	3	5	1	2	4	1	3	2	1	32	machine/equipment as load
225	loader				2			2			1		1	1		2	4		1		2	4	1	21	loader
514	harmful substance						1			1	2		1	3		1	3		2	1	1	1	1	18	harmful substance
512	inflammable substance			1						2									2		1	1	1	12	inflammable substance
145	demolition machine															2	1				1	1	1	6	demolition machine
342	industrial dryer			1					1								1					1	1	5	industrial dryer
179	other mobile silviculture machine																				1	1	1	3	other mobile silviculture machine
999	unclassifiable				1		2	1		3	1	1	3	1		1	1	2		2				19	unclassifiable
211	crane						3			1	2		1		1	1	2	1				3		15	crane
214	elevator, lift				1			1					1	1	1	2		1		2	3	2		15	elevator, lift

Transition of fatal and non-fatal accidents in type of accidents in code no. 0601 agriculture (1999-2021)

code	Type of accidents	1999	2000	2001	2002	2003	2004	2005	2006	2007	2008	2009	2010	2011	2012	2013	2014	2015	2016	2017	2018	2019	2020	2021	total	Type of accidents
01	fall from height	325	332	346	358	326	320	337	324	393	355	377	394	364	424	411	388	397	419	388	444	444	477	414	8,757	fall from height
02	falling to same level	142	114	128	128	157	128	139	132	145	155	132	182	171	210	228	216	198	206	208	252	272	270	269	4,182	falling to same level
08	cut	109	138	114	135	134	113	136	110	128	146	146	153	151	175	164	180	183	150	147	180	176	223	211	3,502	cut
07	caught in/between	119	88	126	106	95	124	96	104	125	120	129	126	149	122	134	159	132	128	165	160	163	154	179	3,003	caught in/between
19	reaction to motion/improper motion	57	49	66	60	63	60	54	61	54	57	71	82	74	68	85	81	80	111	117	109	109	128	165	1,861	reaction to motion/improper motion
04	struck by flying or falling object	59	69	57	65	54	61	59	58	46	50	58	61	64	67	70	58	65	59	71	65	61	68	72	1,417	struck by flying or falling object
03	crash	41	39	50	38	49	28	38	36	43	39	48	55	49	60	56	54	60	52	57	56	70	64	70	1,152	crash
90	others	10	9	9	10	14	15	16	6	10	9	13	13	11	10	16	22	16	17	16	20	20	21	57	360	others
06	crashed by	32	29	35	38	32	44	35	32	34	31	30	38	49	43	38	41	40	52	40	57	56	56	47	929	crashed by
17	traffic accident (public road)	13	42	15	16	11	11	17	18	14	14	24	13	31	29	25	14	27	29	38	23	25	23	25	497	traffic accident (public road)
11	contact to high/low-temperature	6	4	4	5	1	7	6	3	7	4	2	20	11	12	12	12	15	17	24	39	24	22	22	279	contact to high/low-temperature
05	collapse	9	11	14	9	10	8	8	9	11	8	10	7	10	7	10	11	11	11	8	12	8	15	11	228	collapse
12	contact to harmful substance	1	3		3	2	2	1	3	3	2	3	1	3	6	1	3	4		7	3	6	4	10	71	contact to harmful substance
09	injury to the sole of	1	2	3	4	4	7	3	4	2	3	4	5	2	4	6	2	4	3	5	2	2	5	7	84	injury to the sole

code	Prefecture	1999	2000	2001	2002	2003	2004	2005	2006	2007	2008	2009	2010	2011	2012	2013	2014	2015	2016	2017	2018	2019	2020	2021	total	Prefecture
1	Hokkaido	112	98	90		87		97	112	124	106	106	129	124	107	112	149	118	101	122	111	131	100	115	2,351	Hokkaido
22	Shizuoka	61	65	74		68		54	70	73	53	73	74	79	74	89	62	68	73	74	67	73	103	92	1,519	Shizuoka
23	Aichi	70	54	46		48		41	44	41	39	40	35	52	49	44	55	40	53	46	43	61	63	68	1,032	Aichi
14	Kanagawa	24	34	42		41		26	31	37	29	38	37	31	44	40	44	64	45	52	69	62	69	68	927	Kanagawa
13	Tokyo	42	48	55		47		50	60	64	54	58	71	69	52	49	64	52	59	54	53	56	61	67	1,185	Tokyo
30	Wakayama	26	30	40		53		46	36	38	42	50	38	44	56	63	39	51	52	57	45	45	53	61	965	Wakayama
45	Miyazaki	17	18	23		12		23	20	33	18	24	27	28	30	30	24	45	44	34	37	42	44	58	631	Miyazaki
12	Chiba	14	55	44		28		23	31	40	37	47	33	47	32	38	41	43	48	33	53	47	62	55	851	Chiba
43	Kumamoto	18	9	17		24		22	7	18	22	12	25	29	28	30	30	23	39	37	47	54	42	52	585	Kumamoto
8	Ibaraki	26	42	44		40		32	41	36	36	39	34	37	43	30	43	35	36	29	33	35	61	50	802	Ibaraki
7	Fukushima	9	3	10		5		10	10	15	16	11	10	9	17	22	21	22	23	12	28	24	24	48	349	Fukushima
38	Ehime	29	24	22		21		19	23	29	32	31	27	27	25	34	28	42	31	42	45	43	40	46	660	Ehime
20	Nagano	22	13	24		13		17	24	18	20	20	25	32	44	29	49	40	39	31	39	42	44	46	631	Nagano
46	Kagoshima	29	20	24		14		16	8	20	18	27	31	33	39	43	40	42	43	55	39	47	53	44	685	Kagoshima
40	Fukuoka	29	15	25		32		31	18	25	27	29	28	24	21	32	34	38	41	42	50	32	55	39	667	Fukuoka
10	Gunma	15	10	8		10		20	13	18	18	34	29	33	41	25	34	20	30	25	34	42	40	39	538	Gunma
27	Osaka	12	21	20		18		19	17	16	23	24	25	16	41	18	18	16	31	37	25	25	23	37	482	Osaka
28	Hyogo	30	38	31		52		33	42	35	38	21	52	32	44	48	33	24	30	31	58	35	33	35	775	Hyogo
42	Nagasaki	26	15	22		27		21	15	7	24	29	29	25	36	37	22	35	27	39	38	27	42	34	577	Nagasaki
2	Aomori	19	15	23		17		15	11	22	21	14	17	19	21	19	22	19	21	28	32	33	33	32	453	Aomori
24	Mie	38	30	21		25		32	25	30	21	26	22	22	30	34	32	22	30	34	37	35	39	30	615	Mie
9	Tochigi	8	5	8		4		12	12	8	10	13	9	10	7	6	7	15	8	12	18	18	16	28	234	Tochigi
44	Oita	12	10	15		14		20	13	20	23	13	10	15	17	25	14	17	22	39	27	29	25	27	407	Oita
4	Miyagi	6	6	9		9		6	5	14	20	22	22	18	26	26	24	16	14	12	26	19	18	27	345	Miyagi

15	Niigata	19	22	21		24		17	10	14	16	11	24	29	24	20	17	20	22	23	16	10	21	26	406	Niigata
6	Yamagata	8	10	10		9		10	11	9	15	7	24	11	13	12	19	17	18	11	32	21	26	26	319	Yamagata
26	Kyoto	13	15	10		21		24	24	22	27	32	40	27	25	37	30	25	21	23	30	31	29	25	531	Kyoto
11	Saitama	14	14	17		12		11	11	21	12	19	22	23	11	11	14	16	22	18	24	28	31	25	376	Saitama
3	Iwate	12	5	5		8		19	7	10	10	5	10	11	19	16	10	4	17	11	12	12	21	25	249	Iwate
33	Okayama	5	17	13		9		10	12	9	9	12	6	11	11	16	18	19	20	17	23	29	15	22	303	Okayama
29	Nara	16	10	13		25		20	16	23	18	25	20	27	35	31	30	27	20	20	14	27	24	20	461	Nara
39	Kochi	2	3	2		3		11	4	6	6	8	7	8	18	12	12	17	11	13	17	18	17	20	215	Kochi
34	Hiroshima	39	39	22		14		23	13	18	20	14	38	21	19	28	23	28	22	24	23	31	27	18	504	Hiroshima
36	Tokushima	14	7	9		11		10	10	4	4	8	8	6	10	8	12	13	21	22	21	12	12	15	237	Tokushima
21	Gifu	11	15	11		20		16	20	19	23	9	22	29	21	24	21	19	20	16	18	27	20	14	395	Gifu
32	Shimane	9	7	6		6		7	8	12	5	9	9	8	10	12	10	11	10	8	10	14	13	14	198	Shimane
19	Yamanashi	4	10	8		17		7	4	4	11	6	7	8	8	6	10	10	9	9	14	12	10	14	188	Yamanashi
31	Tottori	5	1	4		5		2	7	7	3	7	3	5	10	5	4	5	8	8	6	4	9	14	122	Tottori
17	Ishikawa	13	16	22		10		14	10	10	9	8	14	12	8	10	9	8	9	12	13	15	12	13	247	Ishikawa
37	Kagawa	5	6	6		4		7	9	13	4	11	11	14	11	9	15	11	9	13	14	10	18	13	213	Kagawa
16	Toyama	9	15	19		12		20	9	8	17	23	13	7	22	24	21	20	15	18	13	16	11	12	324	Toyama
5	Akita	3	6	3		5		5	7	6	6	5	6	7	6	10	7	10	9	10	15	16	15	12	169	Akita
47	Okinawa	3	7	5		2		6	4	3	5	4	6	3	4	12	6	12	2	8	16	14	8	11	141	Okinawa
25	Shiga	4	1	3		2		8	6	2	10	6	8	1	10	10	9	8	10	9	7	8	15	8	145	Shiga
35	Yamaguchi	14	16	14		13		7	6	8	7	6	4	8	13	7	5	10	8	11	8	8	11	6	190	Yamaguchi
41	Saga	4	6	8		7		4	2	2	3	7	6	7	7	9	6	7	7	7	11	8	10	6	134	Saga
18	Fukui	9	4	2		6		5	7	4	8	5	8	5	6	9	6	10	10	6	11	10	17	3	151	Fukui
	total	929	930	970		954		948	905	1,015	995	1,048	1,155	1,143	1,245	1,261	1,243	1,234	1,260	1,294	1,422	1,438	1,535	1,560	24,484	total

Data source : <https://anzeninfo.mhlw.go.jp/user/anzen/tok/anst00.htm>

Return to https://www.jisha.or.jp/english/statistics/202211_23.html