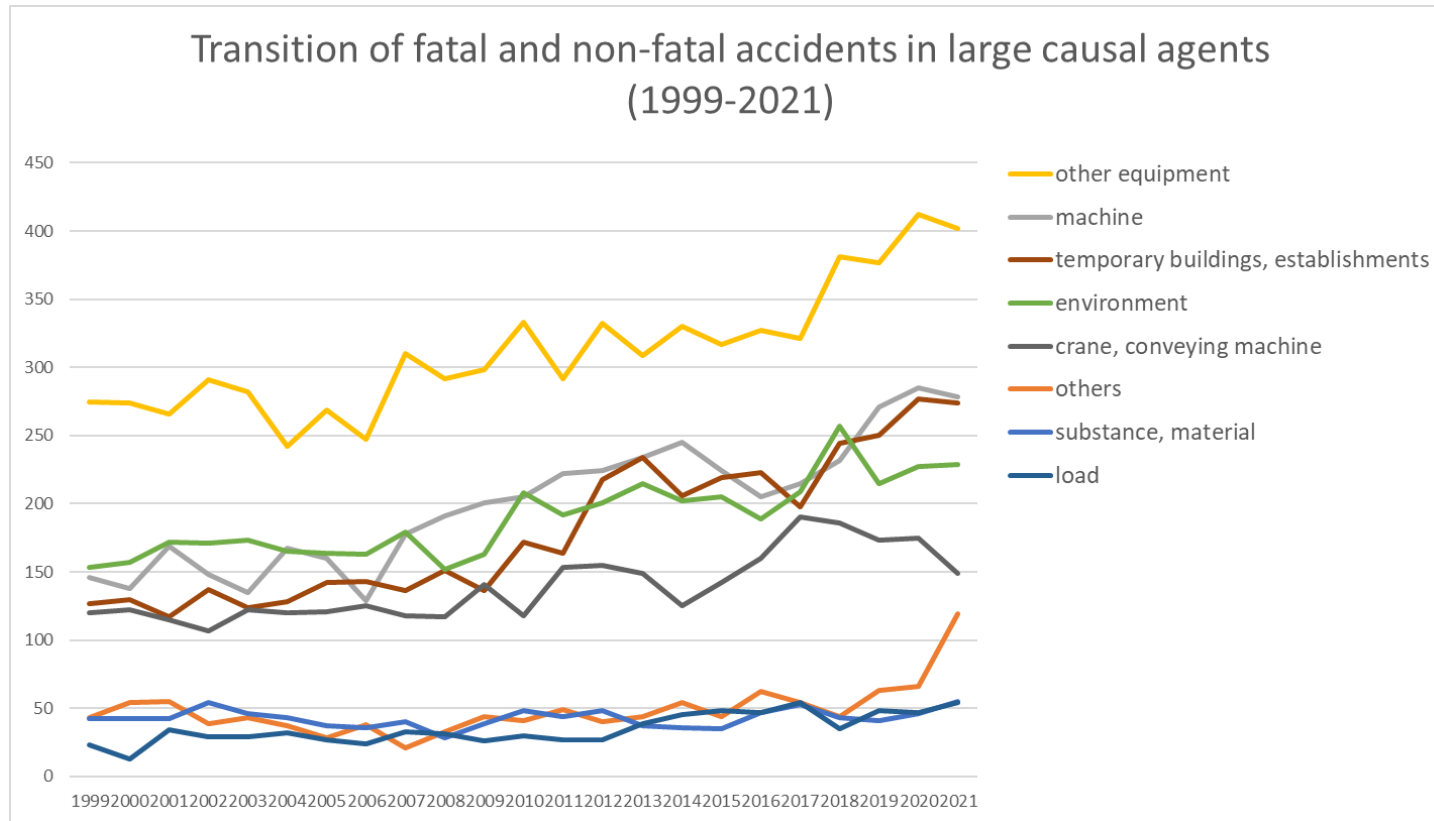
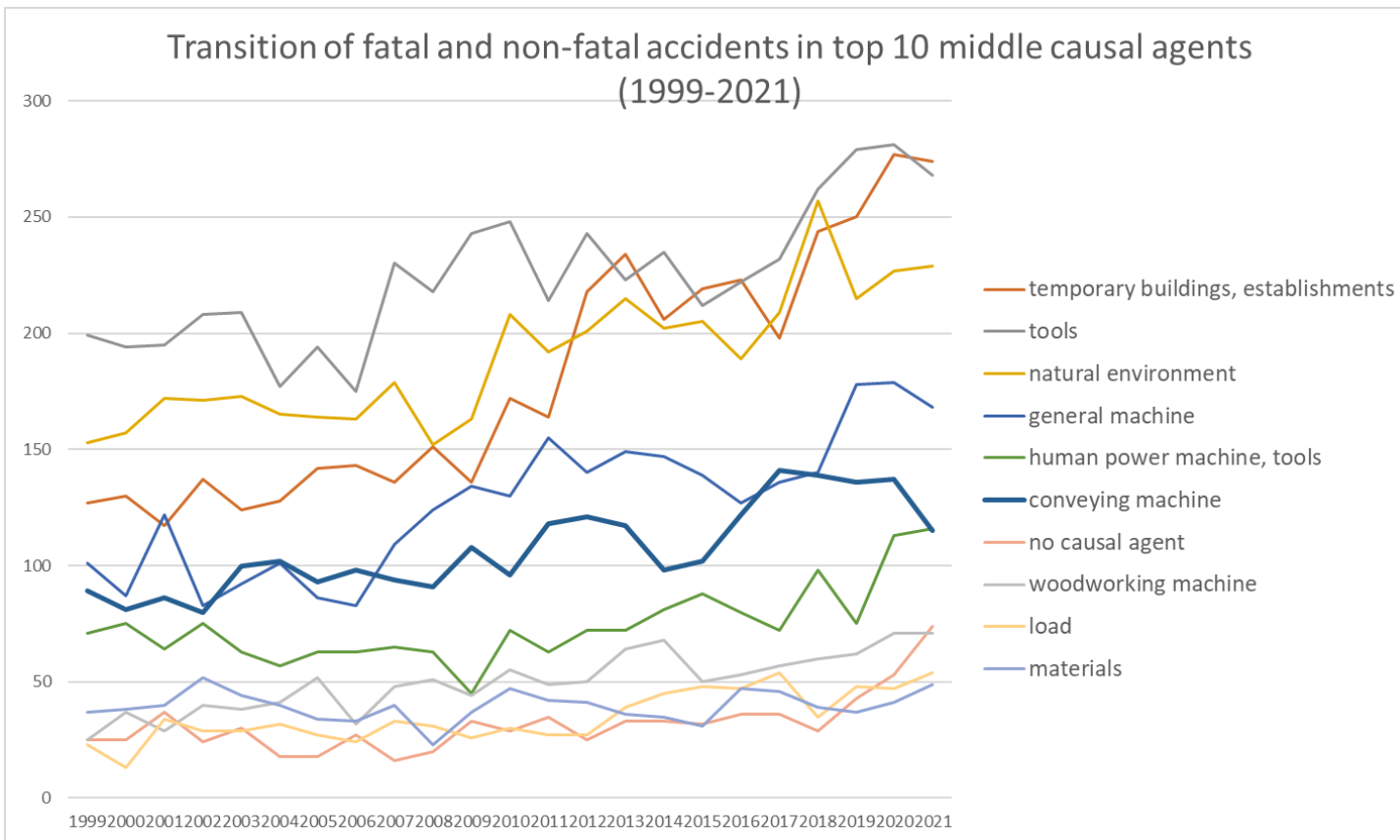


Transition of fatal and non-fatal accidents in each element like as causal agents, type of accidents, etc. in code no. 060101 agriculture (1999-2021)

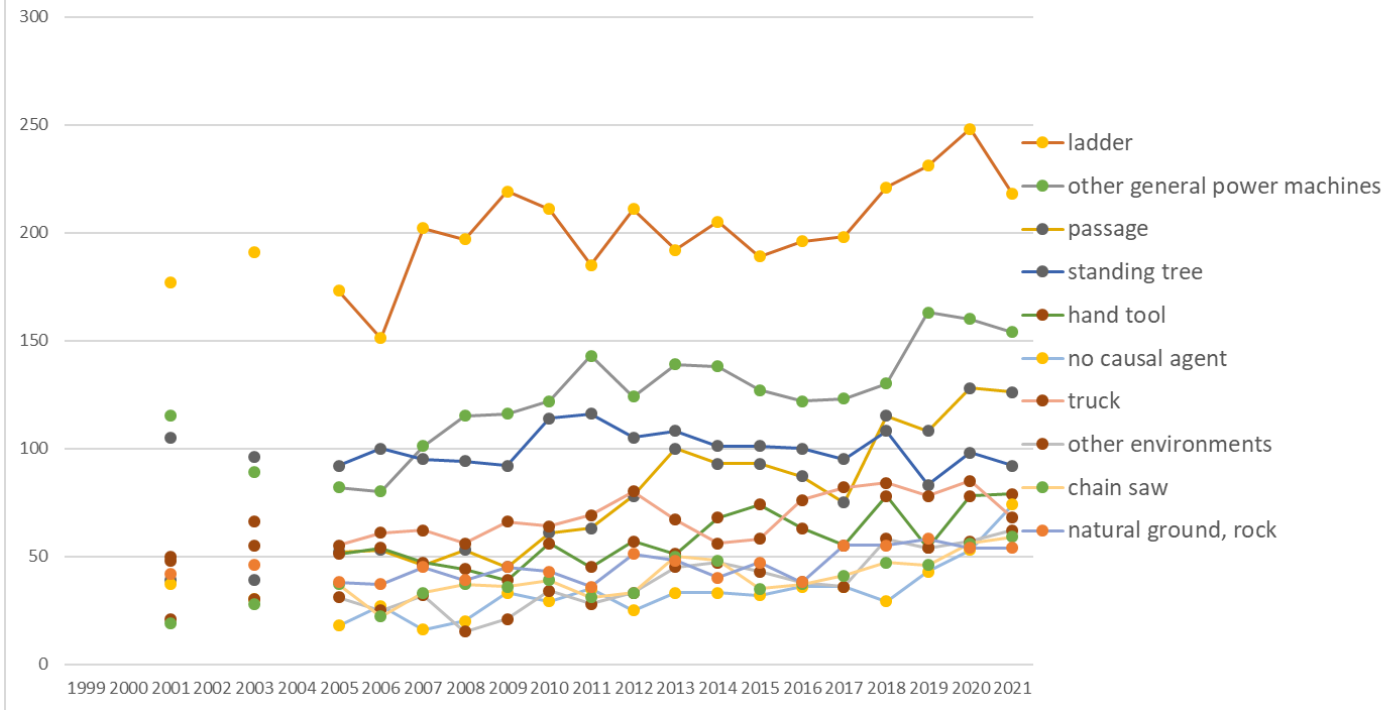


Transition of fatal and non-fatal accidents in large causal agents in code no. 060101 agriculture (1999-2021)



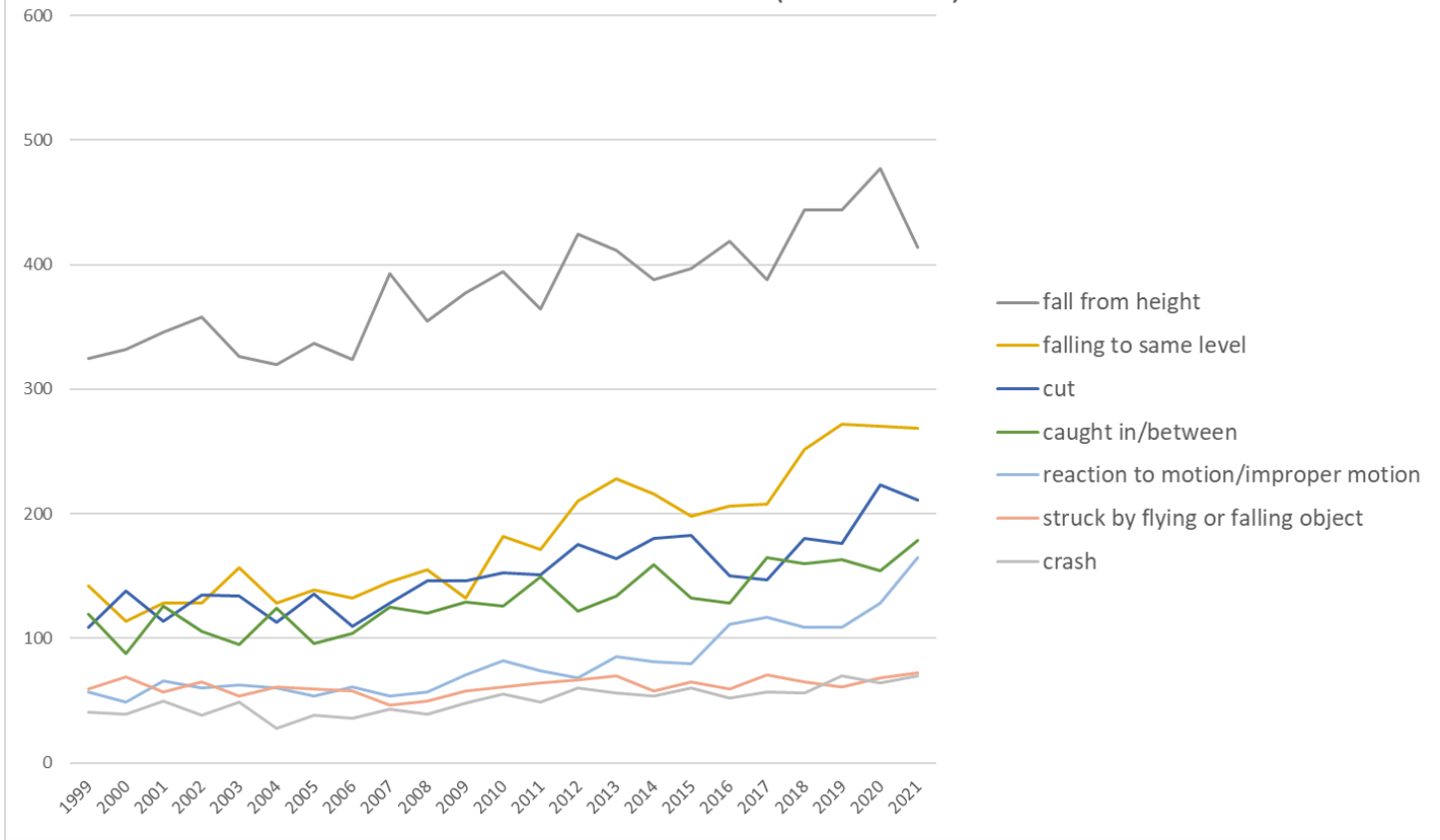
Transition of fatal and non-fatal accidents in middle causal agents in code no. 060101 agriculture (1999-2021)

Transition of fatal and non-fatal accidents in top 10 small causal agents (1999-2021)



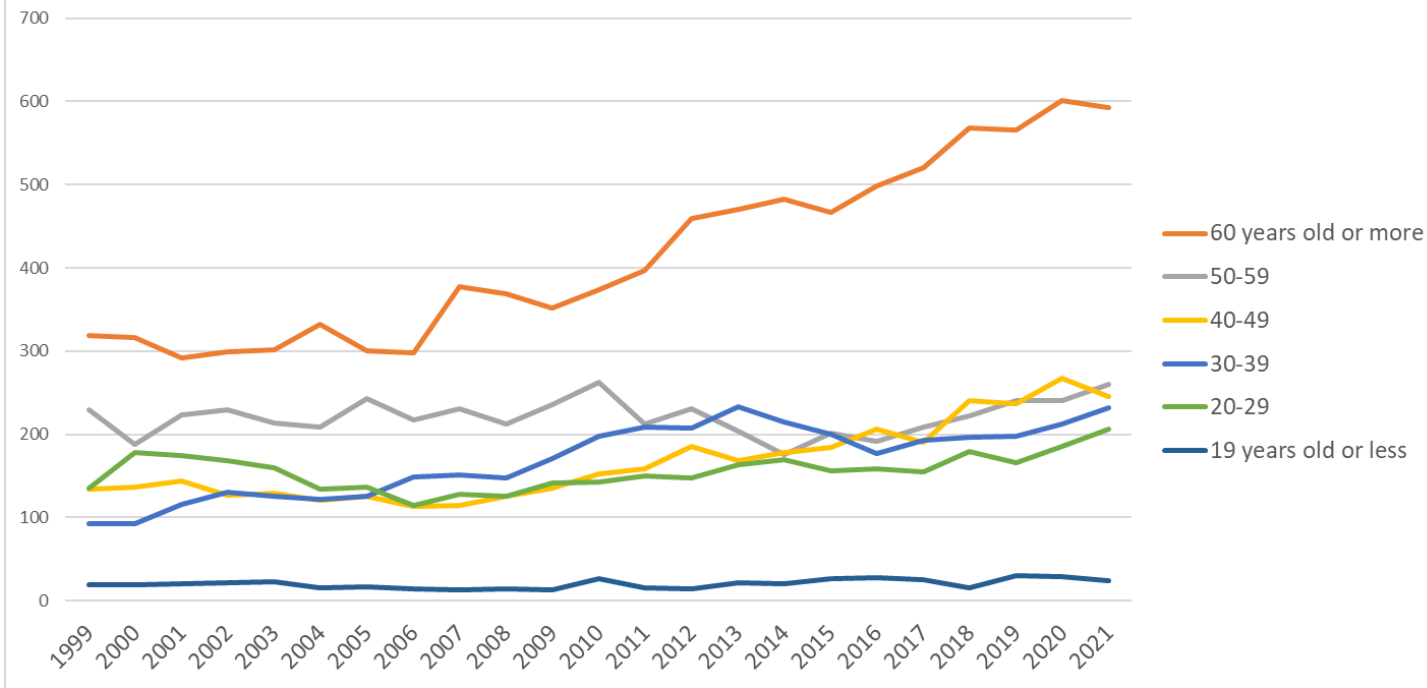
Transition of fatal and non-fatal accidents in small causal agents in code no. 060101 agriculture (1999-2021)

Transition of fatal and non-fatal accidents in top 7 type of accidents (1999-2021)



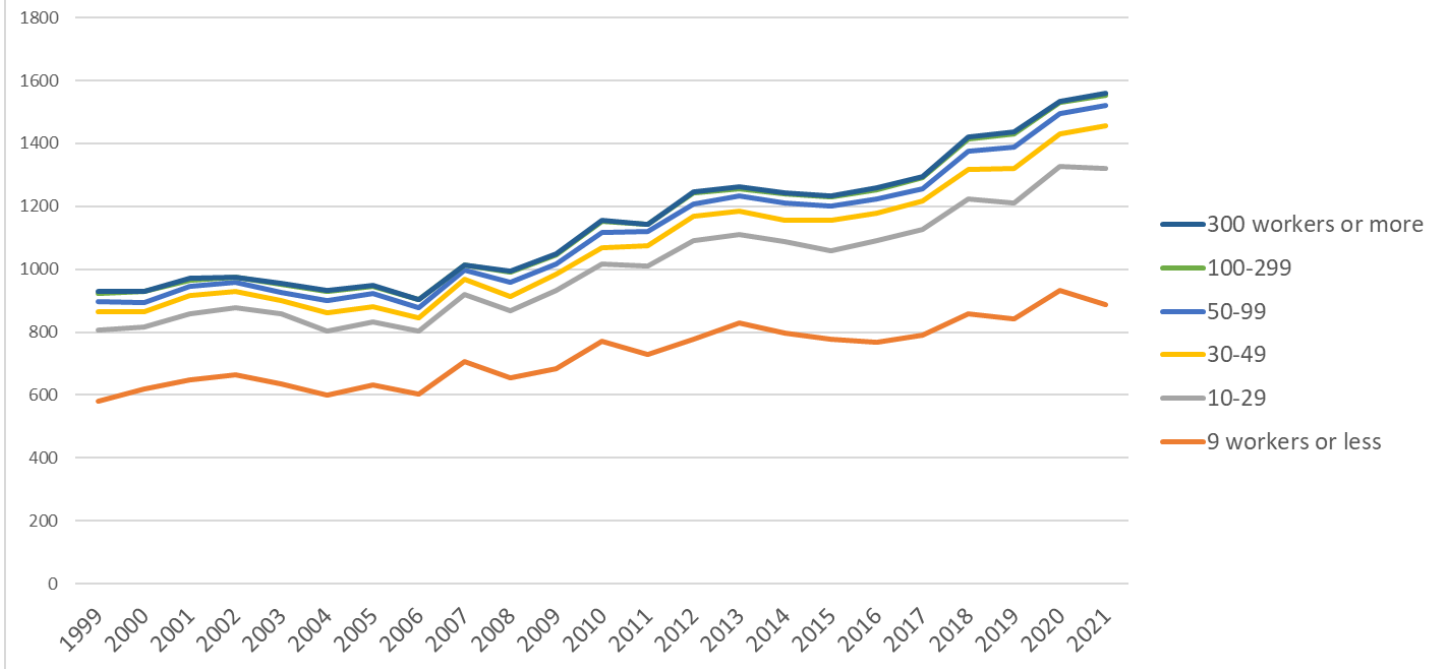
Transition of fatal and non-fatal accidents in type of accidents in code no. 060101 agriculture (1999-2021)

Transition of fatal and non-fatal accidents in workers ages (1999-2021)



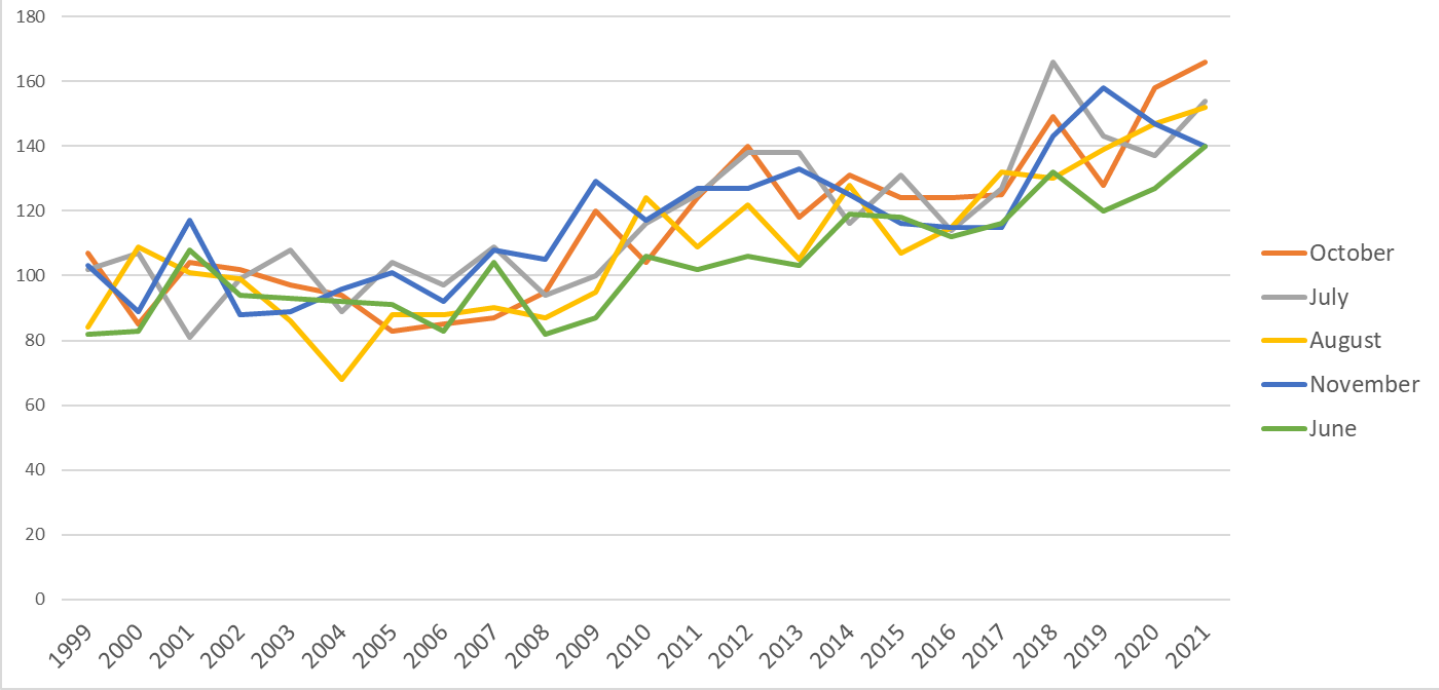
Transition of fatal and non-fatal accidents in workers ages in code no. 060101 agriculture (1999-2021)

Transition of fatal and non-fatal accidents in workers scales (1999-2021)



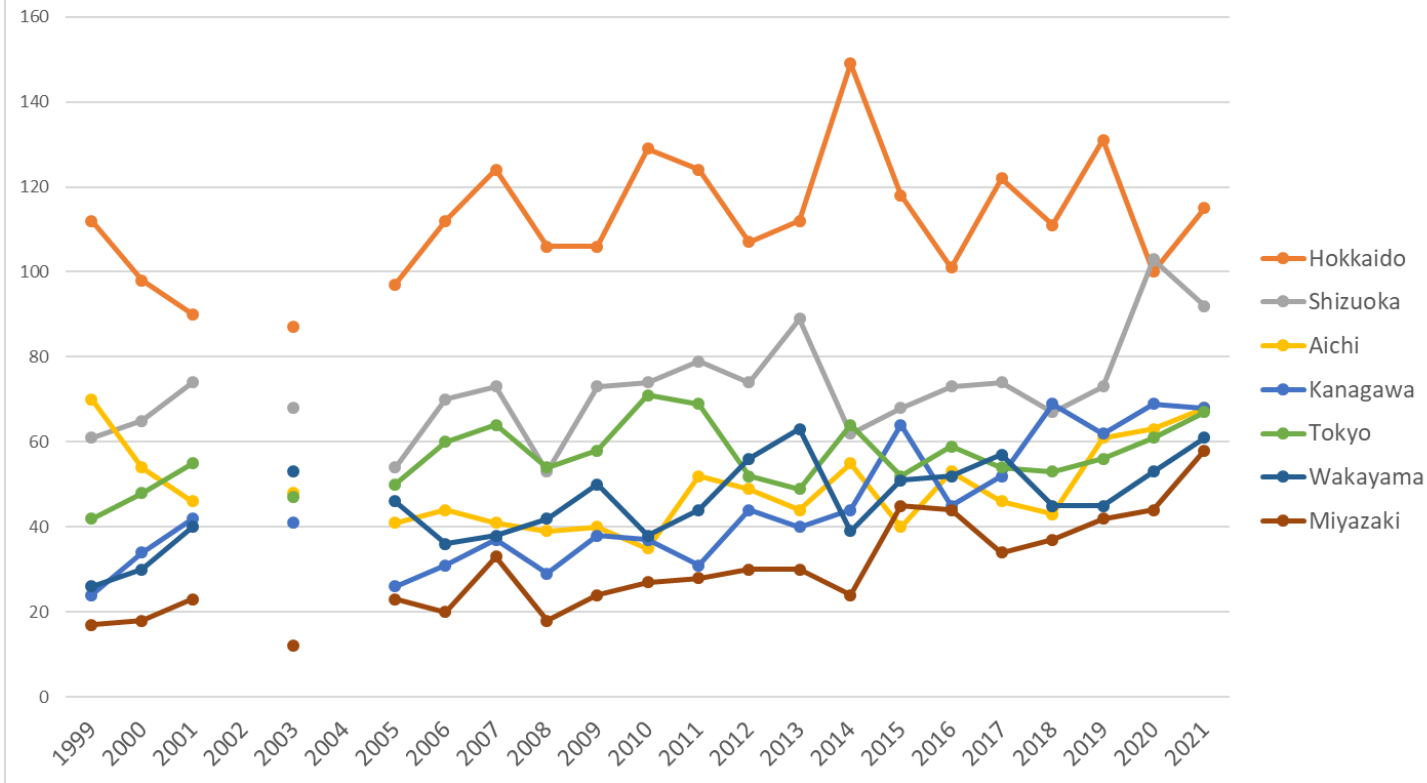
Transition of fatal and non-fatal accidents in workers scales in code no. 060101 agriculture (1999-2021)

Transition of fatal and non-fatal accidents in top 5 months (1999-2021)



Transition of fatal and non-fatal accidents in months in code no. 060101 agriculture (1999-2021)

Transition of fatal and non-fatal accidents in top 7 prefectures (1999-2021)



Transition of fatal and non-fatal accidents in prefectures in code no. 060101 agriculture (1999-2021)

Transition of fatal and non-fatal accidents in large causal agents in code no. 060101 agriculture (1999-2021)

code	Causal (L) agents	1999	2000	2001	2002	2003	2004	2005	2006	2007	2008	2009	2010	2011	2012	2013	2014	2015	2016	2017	2018	2019	2020	2021	total	Causal (L) agents
3	other equipment	275	274	266	291	282	242	269	247	310	292	298	333	292	332	309	330	317	327	321	381	377	412	402	7,179	other equipment
1	machine	146	138	169	148	135	167	160	129	178	191	201	205	222	224	234	245	224	205	215	232	271	285	278	4,602	machine
4	temporary buildings, establishments	127	130	117	137	124	128	142	143	136	151	136	172	164	218	234	206	219	223	198	244	250	277	274	4,150	temporary buildings, establishments

7	environment	153	157	172	171	173	165	164	163	179	152	163	208	192	201	215	202	205	189	209	257	215	227	229	4,361	environment
2	crane, conveying machine	120	122	115	107	122	120	121	125	118	117	141	118	153	155	149	125	142	160	190	186	173	175	149	3,203	crane, conveying machine
9	others	43	54	55	39	43	37	28	38	21	33	44	41	49	40	44	54	44	62	54	44	63	66	119	1,115	others
5	substance, material	42	42	42	54	46	43	37	36	40	28	39	48	44	48	37	36	35	47	53	43	41	46	55	982	substance, material
6	load	23	13	34	29	29	32	27	24	33	31	26	30	27	27	39	45	48	47	54	35	48	47	54	802	load
	total	929	930	970	976	954	934	948	905	1,015	995	1,048	1,155	1,143	1,245	1,261	1,243	1,234	1,260	1,294	1,422	1,438	1,535	1,560	26,394	total

Transition of fatal and non-fatal accidents in middle causal agents in code no. 060101 agriculture (1999-2021)

code	Causal (M) agents	1999	2000	2001	2002	2003	2004	2005	2006	2007	2008	2009	2010	2011	2012	2013	2014	2015	2016	2017	2018	2019	2020	2021	total	Causal (M) agents
41	temporary buildings, establishments	127	130	117	137	124	128	142	143	136	151	136	172	164	218	234	206	219	223	198	244	250	277	274	4,150	temporary buildings, establishments
37	tools	199	194	195	208	209	177	194	175	230	218	243	248	214	243	223	235	212	222	232	262	279	281	268	5,161	tools
71	natural environment	153	157	172	171	173	165	164	163	179	152	163	208	192	201	215	202	205	189	209	257	215	227	229	4,361	natural environment
16	general machine	101	87	122	83	92	101	86	83	109	124	134	130	155	140	149	147	139	127	136	140	178	179	168	2,910	general machine
36	human power machine, tools	71	75	64	75	63	57	63	63	65	63	45	72	63	72	72	81	88	80	72	98	75	113	116	1,706	human power machine, tools
22	conveying machine	89	81	86	80	100	102	93	98	94	91	108	96	118	121	117	98	102	122	141	139	136	137	115	2,464	conveying machine
92	no causal agent	25	25	37	24	30	18	18	27	16	20	33	29	35	25	33	33	32	36	36	29	43	53	74	731	no causal

																											agent
13	woodworking machine	25	37	29	40	38	41	52	32	48	51	44	55	49	50	64	68	50	53	57	60	62	71	71	1,147	woodworking machine	
61	load	23	13	34	29	29	32	27	24	33	31	26	30	27	27	39	45	48	47	54	35	48	47	54	802	load	
52	materials	37	38	40	52	44	40	34	33	40	23	37	47	42	41	36	35	31	47	46	39	37	41	49	909	materials	
91	other causal agent	16	26	18	14	12	17	8	10	5	10	10	11	11	14	11	20	11	24	18	13	20	13	45	357	other causal agent	
23	vehicle	19	34	27	18	16	16	19	20	18	16	29	18	29	24	22	21	33	27	46	35	26	26	29	568	vehicle	
14	construction machine	6	6	11	16	3	14	13	8	16	10	13	14	10	26	16	14	23	18	19	18	20	19	27	340	construction machine	
39	other equipments, facilities	5	4	5	6	9	7	11	8	14	11	9	10	13	14	13	13	15	19	16	19	21	16	17	275	other equipments, facilities	
12	power transmission mechanism	4	4	5	4	1	7	6	3	4	4	6	4	4	7	3	10	5	5	2	4	5	11	7	115	power transmission mechanism	
51	hazards, harmful substances	5	4	2	2	2	3	3	3		5	2	1	2	7	1	1	4		7	4	4	5	6	73	hazards, harmful substances	
21	crane	12	7	2	9	6	2	9	7	6	10	4	4	6	10	10	6	7	11	3	12	11	12	5	171	crane	
15	metal manufacturing machine	9	4	2	5	1	4	2	3	1	2	3	2	4	1	2	4	4	2	1	6	3	4	4	73	metal manufacturing machine	
34	kiln, caldron		1	1	2					1			1					1	1			1	1	1	11	kiln, caldron	
17	mobile silviculture machine																	3			2	2	1	1	9	mobile silviculture	

																											machine
99	unclassifiable	2	3		1	1	2	2	1		3	1	1	3	1		1	1	2		2					27	unclassifiable
35	electric equipment			1		1			1			1	2	2	3			1	4	1	1					18	electric equipment
11	engine	1						1				1					2				2	1				8	engine
31	pressure vessel						1	1								1	1					1	1			6	pressure vessel
32	chemical facilities																		1							1	chemical facilities
33	welding equipment																				1					1	welding equipment
	total	929	930	970	976	954	934	948	905	1,015	995	1,048	1,155	1,143	1,245	1,261	1,243	1,234	1,260	1,294	1,422	1,438	1,535	1,560	26,394	total	

Transition of fatal and non-fatal accidents in small causal agents in code no. 060101 agriculture (1999-2021)

code	Causal (S) agents	1999	2000	2001	2002	2003	2004	2005	2006	2007	2008	2009	2010	2011	2012	2013	2014	2015	2016	2017	2018	2019	2020	2021	total	Causal (S) agents
371	ladder			177		191		173	151	202	197	219	211	185	211	192	205	189	196	198	221	231	248	218	3,815	ladder
169	other general power machines			115		89		82	80	101	115	116	122	143	124	139	138	127	122	123	130	163	160	154	2,343	other general power machines
417	passage			39		39		52	53	46	53	45	61	63	78	100	93	93	87	75	115	108	128	126	1,454	passage
712	standing tree			105		96		92	100	95	94	92	114	116	105	108	101	101	100	95	108	83	98	92	1,895	standing tree
364	hand tool			48		55		51	54	47	44	39	56	45	57	51	68	74	63	55	78	54	78	79	1,096	hand tool
921	no causal agent			37		30		18	27	16	20	33	29	35	25	33	33	32	36	36	29	43	53	74	639	no causal agent
221	truck			50		66		55	61	62	56	66	64	69	80	67	56	58	76	82	84	78	85	68	1,283	truck
719	other environments			21		30		31	25	32	15	21	34	28	33	45	47	43	38	36	58	54	57	62	710	other environments
136	chain saw			19		28		37	22	33	37	36	39	31	33	50	48	35	37	41	47	46	56	59	734	chain saw
711	natural ground, rock			42		46		38	37	45	39	45	43	36	51	48	40	47	38	55	55	58	54	54	871	natural ground, rock

611	load			34		29		25	22	33	31	25	27	26	26	36	40	47	45	50	34	45	45	53	673	load
379	other tools			13		18		20	21	27	19	22	34	29	30	29	24	22	24	34	39	46	33	47	531	other tools
911	other causal agent			18		12		8	10	5	10	10	11	11	14	11	20	11	24	18	13	20	13	45	284	other causal agent
416	working platform, boot board			17		30		19	22	24	24	23	29	31	33	34	35	36	37	43	42	46	38	42	605	working platform, boot board
418	building, establishment			29		28		33	30	30	35	29	37	33	52	52	32	37	51	32	38	49	42	39	708	building, establishment
419	other temporary buildings, establishments			14		11		20	16	15	21	23	24	19	24	28	23	28	27	32	36	24	31	37	453	other temporary buildings, establishments
362	human power hauling equipment			15		7		10	8	15	17	6	16	18	13	19	11	14	14	16	19	17	31	29	295	human power hauling equipment
231	cars, bus, motorcycle			26		15		17	18	17	12	25	17	27	20	20	18	28	24	38	29	21	25	24	421	cars, bus, motorcycle
521	metal material			8		10		6	13	7	10	5	7	11	13	9	7	6	10	14	13	12	14	22	197	metal material
229	other powered conveying machines			13		15		20	13	16	17	15	10	22	23	23	19	13	17	25	30	20	18	18	347	other powered conveying machines
413	stairs, landing stage			9		3		5	8	7	7	5	10	9	14	6	9	9	10	11	6	13	19	18	178	stairs, landing stage
391	other equipment, facilities			5		9		11	8	14	11	9	10	13	14	13	13	15	19	16	19	21	16	17	253	other equipment, facilities
224	conveyor			13		11		8	17	9	12	16	9	11	7	11	11	19	12	10	8	15	13	15	227	conveyor
715	high/cold temperature environment			2		1		3	1	5	3	4	17	9	10	10	13	14	11	22	36	19	16	14	210	high/cold temperature environment
523	stone, sand, substance			13		12		10	5	5	4	9	18	10	7	8	5	5	9	8	8	6	9	14	165	stone, sand, substance

222	forklift			10		6		9	5	7	5	10	11	14	8	14	9	8	16	18	14	20	15	13	212	forklift
142	excavating machine			4		2		9	4	3	3	7	2	4	9	5	5	9	2	5	3	8	6	12	102	excavating machine
165	food manufacturing machine			2				3	2	4	4	12	4	4	9	8	6	8	5	8	6	5	15	10	115	food manufacturing machine
522	lumber, bamboo			14		14		16	12	21	6	16	18	15	14	5	15	16	21	19	10	14	13	9	268	lumber, bamboo
415	roof, beam, haze, crossbeam, principal rafter			3		6		7	7	7	4	4	6	6	11	7	6	10	8	3	2	2	9	8	116	roof, beam, haze, crossbeam, principal rafter
121	power transmission mechanism			5		1		6	3	4	4	6	4	4	7	3	10	5	5	2	4	5	11	7	96	power transmission mechanism
141	leveling, transporting or loading machine			2		1		1	3	6	2	4	8	3	6	6	4	5	6	6	9	6	5	7	90	leveling, transporting or loading machine
139	other woodworking machines			6		7		6	8	10	10	7	11	10	8	8	10	8	12	11	11	11	9	6	169	other woodworking machines
131	circular sawing machine			4		3		8	2	5	4	1	4	7	8	6	10	6	4	3	2	5	5	6	93	circular sawing machine
212	mobile crane			1		4		5	6	5	7	1	4	4	9	6	3	5	9	2	10	6	6	5	98	mobile crane
239	other vehicles			1		1		2	2	1	4	4	1	2	4	2	3	5	3	7	6	5	1	5	59	other vehicles
149	other construction machines			3				1	1	5	2	1	2		2	2		5	3	1	5	1	3	5	42	other construction machines
714	abnormal environment			1						2	1	1		1						1			1	5	13	abnormal environment
361	human power cranes									1					1	1						2	2	5	12	human power cranes
529	other materials			5		8		2	3	7	3	7	4	6	7	14	8	4	7	5	8	5	5	4	112	other materials

162	mixer, grinder			1	3			1	4	4	6	3	7	4	2	2	4		2	3	7	4	4	61	mixer, grinder
153	grinding machine, buffing machine			1	1	1	1	1	1	1	3	2	4		2	3	3	2	1	5	3	4	4	42	grinding machine, buffing machine
519	other hazards, harmful substances			1	2			3		1		1	1	2	1		1		3	3	2	2	4	27	other hazards, harmful substances
411	scaffolding			5	5	5	6	5	2	2	4	1	3	2	3	3	1	1	2	3	1	3	57	scaffolding	
372	slinging tool			5		1	3	1	2	2	3		2	2	6	1	2		2	2		3	37	slinging tool	
363	human power machine			1	1	2	1	2	2				1	1	2		3	1	1	2	2	3	25	human power machine	
146	vehicle for high lift work			2		2		1	3	1	1	3	9	3	3	3	5	6		4	4	2	52	vehicle for high lift work	
713	water			1									2	2	4	1		2			1	1	2	16	water
414	opening			1	2	1	1	2	5	5	1	2	3	5	5	3	2	1	3	5	9	1	57	opening	
612	machine/equipment as load					2	2				1	3	1	1	3	5	1	2	4	1	3	2	1	32	machine/equipment as load
225	loader				2		2				1		1	1		2	4		1		2	4	1	21	loader
514	harmful substance					1			1	2			1	3		1	3		2	1	1	1	1	18	harmful substance
512	inflammable substance			1				2		2									2		1	1	1	12	inflammable substance
145	demolition machine														2	1					1	1	1	6	demolition machine
342	industrial dryer			1					1							1						1	1	5	industrial dryer
179	other mobile silviculture machine																				1	1	1	3	other mobile silviculture machine
999	unclassifiable				1	2	1		3	1	1	3	1		1	1	2		2				19	unclassifiable	
211	crane					3			1	2			1		1	1	2	1				3		15	crane
214	elevator, lift				1		1						1	1	1	2		1		2	3	2		15	elevator, lift

227	rough terrain hauler						1			1		2				1	5	2		1			14	rough terrain hauler				
351	transmission						1				1	1	1	3			1	3	1	1				13	transmission			
219	other powered crane						1		1		2	1							1		1	1		12	other powered crane			
159	other metal manufacturing machines						1			2		1				1	1							8	other metal manufacturing machines			
223	railway equipment												1	1	2	1					1	1	1		8	railway equipment		
111	engine						1				1					2					2	1			7	engine		
163	roll machine (except printingroll machine)																								6	roll machine (except printingroll machine)		
167	industrial robot						1						1		2								1			6	industrial robot	
171	felling machine																3						2			5	felling machine	
133	wood planer machine									1													2		1		4	wood planer machine
161	centrifugal machine																1						1	1			4	centrifugal machine
143	foundation work machine																										3	foundation work machine
144	hardening machine																										3	hardening machine
311	boiler																										3	boiler
341	kiln, caldron																										3	kiln, caldron
359	other electrical equipment																										3	other electrical equipment
132	band sawing																										2	band sawing

	machine																						machine
164	injection molding machine			2																		2	injection molding machine
319	other pressure vessels													1						1		2	other pressure vessels
352	electric power facilities									1												2	electric power facilities
513	inflammable gas									1												2	inflammable gas
134	hollow chisel mortiser, wood borer																					1	hollow chisel mortiser, wood borer
135	chamfering machine, router, woodworking milling machine										1											1	chamfering machine, router, woodworking milling machine
156	shearing machine													1								1	shearing machine
166	printing machine																					1	printing machine
172	mobile logging machine																					1	mobile logging machine
216	gondola																					1	gondola
232	railway vehicle																					1	railway vehicle
321	chemical facilities																					1	chemical facilities
332	arc welding equipment																					1	arc welding equipment
151	lathe																						lathe
152	drill press, milling																						drill press, milling

	machine																								machine	
154	power press																								power press	
155	forging pressure hammer																								forging pressure hammer	
173	skyline yarding machine																								skyline yarding machine	
213	derrick crane																								derrick crane	
215	cargo lifting appliance																								cargo lifting appliance	
217	lumberyard equipment, logging cableway																								lumberyard equipment, logging cableway	
218	simple skyline yarding equipment																								simple skyline yarding equipment	
226	straddle carrier																								straddle carrier	
312	pressure vessel																								pressure vessel	
331	gas welding equipment																								gas welding equipment	
339	other welding equipment																								other welding equipment	
349	other kiln, caldron																								other kiln, caldron	
412	timbering																								timbering	
511	explosive substance																								explosive substance	
515	radiation																								radiation	
	total			970		954		948	905	1,015	995	1,048	1,155	1,143	1,245	1,261	1,243	1,234	1,260	1,294	1,422	1,438	1,535	1,560	22,625	total

Transition of fatal and non-fatal accidents in type of accidents in code no. 060101 agriculture (1999-2021)

code	Type of accidents	1999	2000	2001	2002	2003	2004	2005	2006	2007	2008	2009	2010	2011	2012	2013	2014	2015	2016	2017	2018	2019	2020	2021	total	Type of accidents
01	fall from height	325	332	346	358	326	320	337	324	393	355	377	394	364	424	411	388	397	419	388	444	444	477	414	8,757	fall from height
02	falling to same level	142	114	128	128	157	128	139	132	145	155	132	182	171	210	228	216	198	206	208	252	272	270	269	4,182	falling to same level
08	cut	109	138	114	135	134	113	136	110	128	146	146	153	151	175	164	180	183	150	147	180	176	223	211	3,502	cut
07	caught in/between	119	88	126	106	95	124	96	104	125	120	129	126	149	122	134	159	132	128	165	160	163	154	179	3,003	caught in/between
19	reaction to motion/improper motion	57	49	66	60	63	60	54	61	54	57	71	82	74	68	85	81	80	111	117	109	109	128	165	1,861	reaction to motion/improper motion
04	struck by flying or falling object	59	69	57	65	54	61	59	58	46	50	58	61	64	67	70	58	65	59	71	65	61	68	72	1,417	struck by flying or falling object
03	crash	41	39	50	38	49	28	38	36	43	39	48	55	49	60	56	54	60	52	57	56	70	64	70	1,152	crash
90	others	10	9	9	10	14	15	16	6	10	9	13	13	11	10	16	22	16	17	16	20	20	21	57	360	others
06	crashed by	32	29	35	38	32	44	35	32	34	31	30	38	49	43	38	41	40	52	40	57	56	56	47	929	crashed by
17	traffic accident (public road)	13	42	15	16	11	11	17	18	14	14	24	13	31	29	25	14	27	29	38	23	25	23	25	497	traffic accident (public road)
11	contact to high/low-temperature	6	4	4	5	1	7	6	3	7	4	2	20	11	12	12	12	15	17	24	39	24	22	22	279	contact to high/low-temperature
05	collapse	9	11	14	9	10	8	8	9	11	8	10	7	10	7	10	11	11	11	8	12	8	15	11	228	collapse
12	contact to harmful substance	1	3		3	2	2	1	3	3	2	3	1	3	6	1	3	4		7	3	6	4	10	71	contact to harmful substance
09	injury to the sole of	1	2	3	4	4	7	3	4	2	3	4	5	2	4	6	2	4	3	5	2	2	5	7	84	injury to the sole

	the foot																								of the foot	
99	unclassifiable	2	1	2		1	4		2				3	1	3	2	1	2	2					1	27	unclassifiable
18	traffic accident (others)	2					1	2	3			1	1	1			1			1			2		15	traffic accident (others)
10	drown				1		1							2		3			3						10	drown
13	electric shock			1									1		4				1				2		9	electric shock
16	fire	1									1								1		2			5	fire	
14	explosion									1					1				1			1		4	explosion	
15	burst					1		1																2	burst	
	total	929	930	970	976	954	934	948	905	1,015	995	1,048	1,155	1,143	1,245	1,261	1,243	1,234	1,260	1,294	1,422	1,438	1,535	1,560	26,394	total

Transition of fatal and non-fatal accidents in workers ages in code no. 060101 agriculture (1999-2021)

code	Age	1999	2000	2001	2002	2003	2004	2005	2006	2007	2008	2009	2010	2011	2012	2013	2014	2015	2016	2017	2018	2019	2020	2021	total	Age
6	60 years old or more	319	316	292	299	302	332	301	298	378	369	352	374	397	459	470	483	467	499	521	568	566	601	593	9,556	60 years old or more
5	50-59	229	188	223	230	214	209	243	217	231	213	236	262	212	231	204	176	201	192	209	222	241	240	260	5,083	50-59
4	40-49	134	136	144	127	129	121	125	113	114	125	135	152	159	185	168	178	184	206	191	241	237	268	245	3,817	40-49
3	30-39	93	93	116	130	126	122	125	149	151	148	171	198	209	208	233	215	200	177	193	197	198	212	232	3,896	30-39
2	20-29	135	178	174	168	160	134	137	114	128	126	141	143	150	148	164	170	156	158	155	179	166	185	206	3,575	20-29
1	19 years old or less	19	19	21	22	23	16	17	14	13	14	13	26	16	14	22	21	26	28	25	15	30	29	24	467	19 years old or less
	total	929	930	970	976	954	934	948	905	1,015	995	1,048	1,155	1,143	1,245	1,261	1,243	1,234	1,260	1,294	1,422	1,438	1,535	1,560	26,394	total

Transition of fatal and non-fatal accidents in workers scales in code no. 060101 agriculture (1999-2021)

code	Workers scale	1999	2000	2001	2002	2003	2004	2005	2006	2007	2008	2009	2010	2011	2012	2013	2014	2015	2016	2017	2018	2019	2020	2021	total	Workers scale
1	9 workers or less	581	618	648	664	634	600	631	602	708	654	683	772	729	777	828	797	778	767	789	860	843	934	886	16,783	9 workers or less

2	10-29	227	199	211	213	223	203	202	200	212	214	249	244	282	314	284	290	280	323	339	363	368	393	433	6,266	10-29
3	30-49	56	47	56	52	42	58	48	42	47	45	51	53	64	78	74	69	97	89	88	93	110	102	137	1,598	30-49
4	50-99	34	29	31	30	28	40	42	33	29	45	35	47	44	40	46	55	46	44	41	59	69	67	66	1,000	50-99
5	100-299	25	35	20	17	25	30	23	27	19	34	28	35	23	33	23	29	29	30	34	39	41	35	31	665	100-299
6	300 workers or more	6	2	4		2	3	2	1		3	2	4	1	3	6	3	4	7	3	8	7	4	7	82	300 workers or more
	total	929	930	970	976	954	934	948	905	1,015	995	1,048	1,155	1,143	1,245	1,261	1,243	1,234	1,260	1,294	1,422	1,438	1,535	1,560	26,394	total

Transition of fatal and non-fatal accidents in months in code no. 060101 agriculture (1999-2021)

code	Month	1999	2000	2001	2002	2003	2004	2005	2006	2007	2008	2009	2010	2011	2012	2013	2014	2015	2016	2017	2018	2019	2020	2021	total	Month
10	October	107	85	104	102	97	94	83	85	87	95	120	104	124	140	118	131	124	124	125	149	128	158	166	2,650	October
7	July	102	107	81	99	108	89	104	97	109	94	100	116	125	138	138	116	131	114	127	166	143	137	154	2,695	July
8	August	84	109	101	99	86	68	88	88	90	87	95	124	109	122	105	128	107	115	132	130	139	147	152	2,505	August
11	November	103	89	117	88	89	96	101	92	108	105	129	117	127	127	133	125	116	115	115	143	158	147	140	2,680	November
6	June	82	83	108	94	93	92	91	83	104	82	87	106	102	106	103	119	118	112	116	132	120	127	140	2,400	June
3	March	44	55	44	60	57	78	75	57	70	63	66	86	76	73	99	68	71	87	81	71	102	101	135	1,719	March
5	May	48	56	57	70	66	71	65	68	72	80	77	93	72	107	92	101	112	113	108	113	102	136	127	2,006	May
9	September	87	93	93	78	94	112	98	89	94	113	84	126	105	119	129	128	128	122	133	129	149	141	119	2,563	September
12	December	92	95	93	93	99	84	95	77	84	88	103	86	100	115	111	116	101	111	102	109	116	118	119	2,307	December
4	April	57	48	66	75	60	53	53	46	74	72	55	79	69	54	85	71	67	78	82	98	106	114	109	1,671	April
1	January	59	56	54	64	47	51	42	75	66	62	73	62	76	76	82	73	84	83	81	97	95	103	104	1,665	January
2	February	64	54	52	54	58	46	53	48	57	54	59	56	58	68	66	67	75	86	92	85	80	106	95	1,533	February
	total	929	930	970	976	954	934	948	905	1,015	995	1,048	1,155	1,143	1,245	1,261	1,243	1,234	1,260	1,294	1,422	1,438	1,535	1,560	26,394	total

Transition of fatal and non-fatal accidents in prefectures in code no. 060101 agriculture (1999-2021)

--	--	--	--	--	--	--	--	--	--	--	--	--	--	--	--	--	--	--	--	--	--	--	--	--	--	--	--

code	Prefecture	1999	2000	2001	2002	2003	2004	2005	2006	2007	2008	2009	2010	2011	2012	2013	2014	2015	2016	2017	2018	2019	2020	2021	total	Prefecture
1	Hokkaido	112	98	90		87		97	112	124	106	106	129	124	107	112	149	118	101	122	111	131	100	115	2,351	Hokkaido
22	Shizuoka	61	65	74		68		54	70	73	53	73	74	79	74	89	62	68	73	74	67	73	103	92	1,519	Shizuoka
23	Aichi	70	54	46		48		41	44	41	39	40	35	52	49	44	55	40	53	46	43	61	63	68	1,032	Aichi
14	Kanagawa	24	34	42		41		26	31	37	29	38	37	31	44	40	44	64	45	52	69	62	69	68	927	Kanagawa
13	Tokyo	42	48	55		47		50	60	64	54	58	71	69	52	49	64	52	59	54	53	56	61	67	1,185	Tokyo
30	Wakayama	26	30	40		53		46	36	38	42	50	38	44	56	63	39	51	52	57	45	45	53	61	965	Wakayama
45	Miyazaki	17	18	23		12		23	20	33	18	24	27	28	30	30	24	45	44	34	37	42	44	58	631	Miyazaki
12	Chiba	14	55	44		28		23	31	40	37	47	33	47	32	38	41	43	48	33	53	47	62	55	851	Chiba
43	Kumamoto	18	9	17		24		22	7	18	22	12	25	29	28	30	30	23	39	37	47	54	42	52	585	Kumamoto
8	Ibaraki	26	42	44		40		32	41	36	36	39	34	37	43	30	43	35	36	29	33	35	61	50	802	Ibaraki
7	Fukushima	9	3	10		5		10	10	15	16	11	10	9	17	22	21	22	23	12	28	24	24	48	349	Fukushima
38	Ehime	29	24	22		21		19	23	29	32	31	27	27	25	34	28	42	31	42	45	43	40	46	660	Ehime
20	Nagano	22	13	24		13		17	24	18	20	20	25	32	44	29	49	40	39	31	39	42	44	46	631	Nagano
46	Kagoshima	29	20	24		14		16	8	20	18	27	31	33	39	43	40	42	43	55	39	47	53	44	685	Kagoshima
40	Fukuoka	29	15	25		32		31	18	25	27	29	28	24	21	32	34	38	41	42	50	32	55	39	667	Fukuoka
10	Gunma	15	10	8		10		20	13	18	18	34	29	33	41	25	34	20	30	25	34	42	40	39	538	Gunma
27	Osaka	12	21	20		18		19	17	16	23	24	25	16	41	18	18	16	31	37	25	25	23	37	482	Osaka
28	Hyogo	30	38	31		52		33	42	35	38	21	52	32	44	48	33	24	30	31	58	35	33	35	775	Hyogo
42	Nagasaki	26	15	22		27		21	15	7	24	29	29	25	36	37	22	35	27	39	38	27	42	34	577	Nagasaki
2	Aomori	19	15	23		17		15	11	22	21	14	17	19	21	19	22	19	21	28	32	33	33	32	453	Aomori
24	Mie	38	30	21		25		32	25	30	21	26	22	22	30	34	32	22	30	34	37	35	39	30	615	Mie
9	Tochigi	8	5	8		4		12	12	8	10	13	9	10	7	6	7	15	8	12	18	18	16	28	234	Tochigi
44	Oita	12	10	15		14		20	13	20	23	13	10	15	17	25	14	17	22	39	27	29	25	27	407	Oita
4	Miyagi	6	6	9		9		6	5	14	20	22	22	18	26	26	24	16	14	12	26	19	18	27	345	Miyagi

15	Niigata	19	22	21		24		17	10	14	16	11	24	29	24	20	17	20	22	23	16	10	21	26	406	Niigata
6	Yamagata	8	10	10		9		10	11	9	15	7	24	11	13	12	19	17	18	11	32	21	26	26	319	Yamagata
26	Kyoto	13	15	10		21		24	24	22	27	32	40	27	25	37	30	25	21	23	30	31	29	25	531	Kyoto
11	Saitama	14	14	17		12		11	11	21	12	19	22	23	11	11	14	16	22	18	24	28	31	25	376	Saitama
3	Iwate	12	5	5		8		19	7	10	10	5	10	11	19	16	10	4	17	11	12	12	21	25	249	Iwate
33	Okayama	5	17	13		9		10	12	9	9	12	6	11	11	16	18	19	20	17	23	29	15	22	303	Okayama
29	Nara	16	10	13		25		20	16	23	18	25	20	27	35	31	30	27	20	20	14	27	24	20	461	Nara
39	Kochi	2	3	2		3		11	4	6	6	8	7	8	18	12	12	17	11	13	17	18	17	20	215	Kochi
34	Hiroshima	39	39	22		14		23	13	18	20	14	38	21	19	28	23	28	22	24	23	31	27	18	504	Hiroshima
36	Tokushima	14	7	9		11		10	10	4	4	8	8	6	10	8	12	13	21	22	21	12	12	15	237	Tokushima
21	Gifu	11	15	11		20		16	20	19	23	9	22	29	21	24	21	19	20	16	18	27	20	14	395	Gifu
32	Shimane	9	7	6		6		7	8	12	5	9	9	8	10	12	10	11	10	8	10	14	13	14	198	Shimane
19	Yamanashi	4	10	8		17		7	4	4	11	6	7	8	8	6	10	10	9	9	14	12	10	14	188	Yamanashi
31	Tottori	5	1	4		5		2	7	7	3	7	3	5	10	5	4	5	8	8	6	4	9	14	122	Tottori
17	Ishikawa	13	16	22		10		14	10	10	9	8	14	12	8	10	9	8	9	12	13	15	12	13	247	Ishikawa
37	Kagawa	5	6	6		4		7	9	13	4	11	11	14	11	9	15	11	9	13	14	10	18	13	213	Kagawa
16	Toyama	9	15	19		12		20	9	8	17	23	13	7	22	24	21	20	15	18	13	16	11	12	324	Toyama
5	Akita	3	6	3		5		5	7	6	6	5	6	7	6	10	7	10	9	10	15	16	15	12	169	Akita
47	Okinawa	3	7	5		2		6	4	3	5	4	6	3	4	12	6	12	2	8	16	14	8	11	141	Okinawa
25	Shiga	4	1	3		2		8	6	2	10	6	8	1	10	10	9	8	10	9	7	8	15	8	145	Shiga
35	Yamaguchi	14	16	14		13		7	6	8	7	6	4	8	13	7	5	10	8	11	8	8	11	6	190	Yamaguchi
41	Saga	4	6	8		7		4	2	2	3	7	6	7	7	9	6	7	7	7	11	8	10	6	134	Saga
18	Fukui	9	4	2		6		5	7	4	8	5	8	5	6	9	6	10	10	6	11	10	17	3	151	Fukui
	total	929	930	970		954		948	905	1,015	995	1,048	1,155	1,143	1,245	1,261	1,243	1,234	1,260	1,294	1,422	1,438	1,535	1,560	24,484	total

Data source : <https://anzeninfo.mhlw.go.jp/user/anzen/tok/anst00.htm>

Return to https://www.jisha.or.jp/english/statistics/202211_23.html