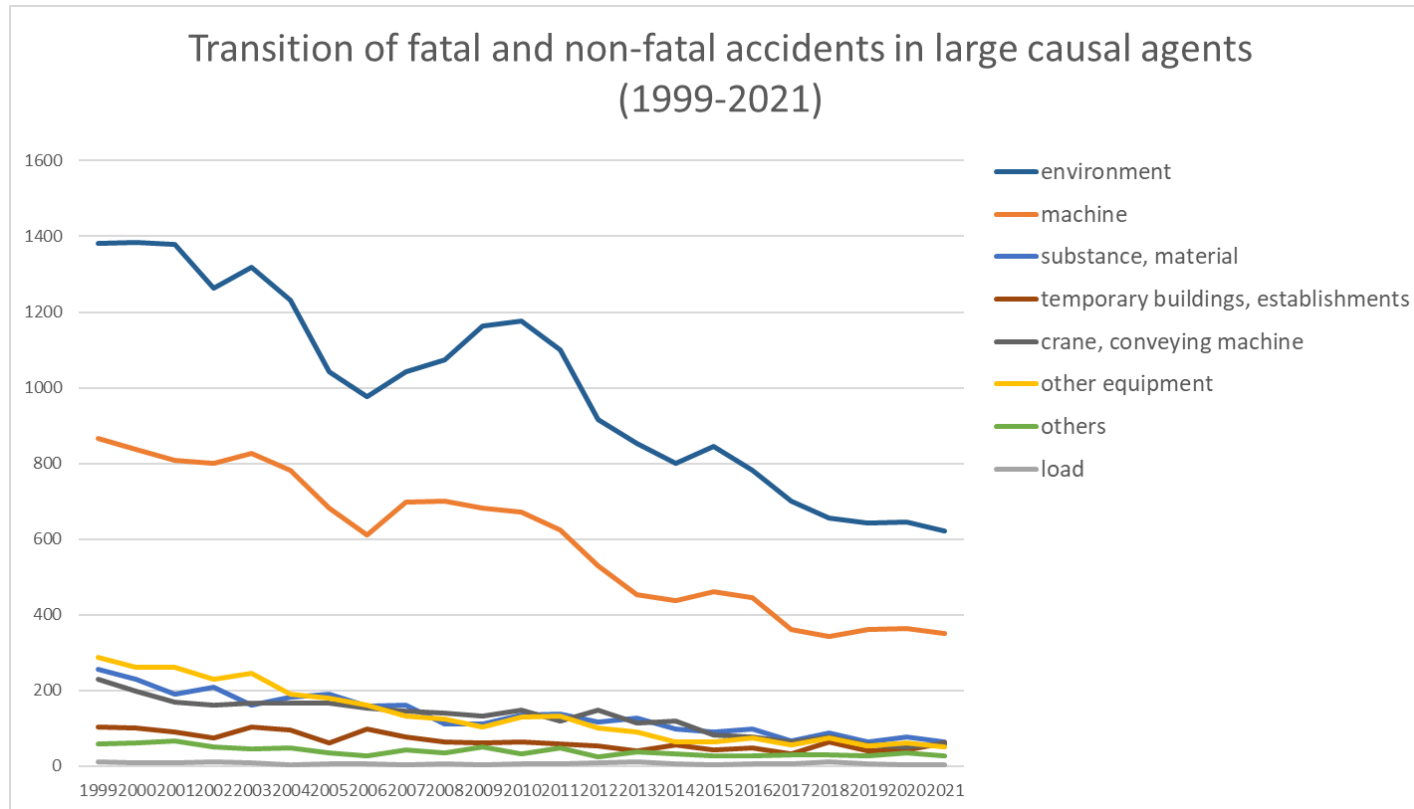
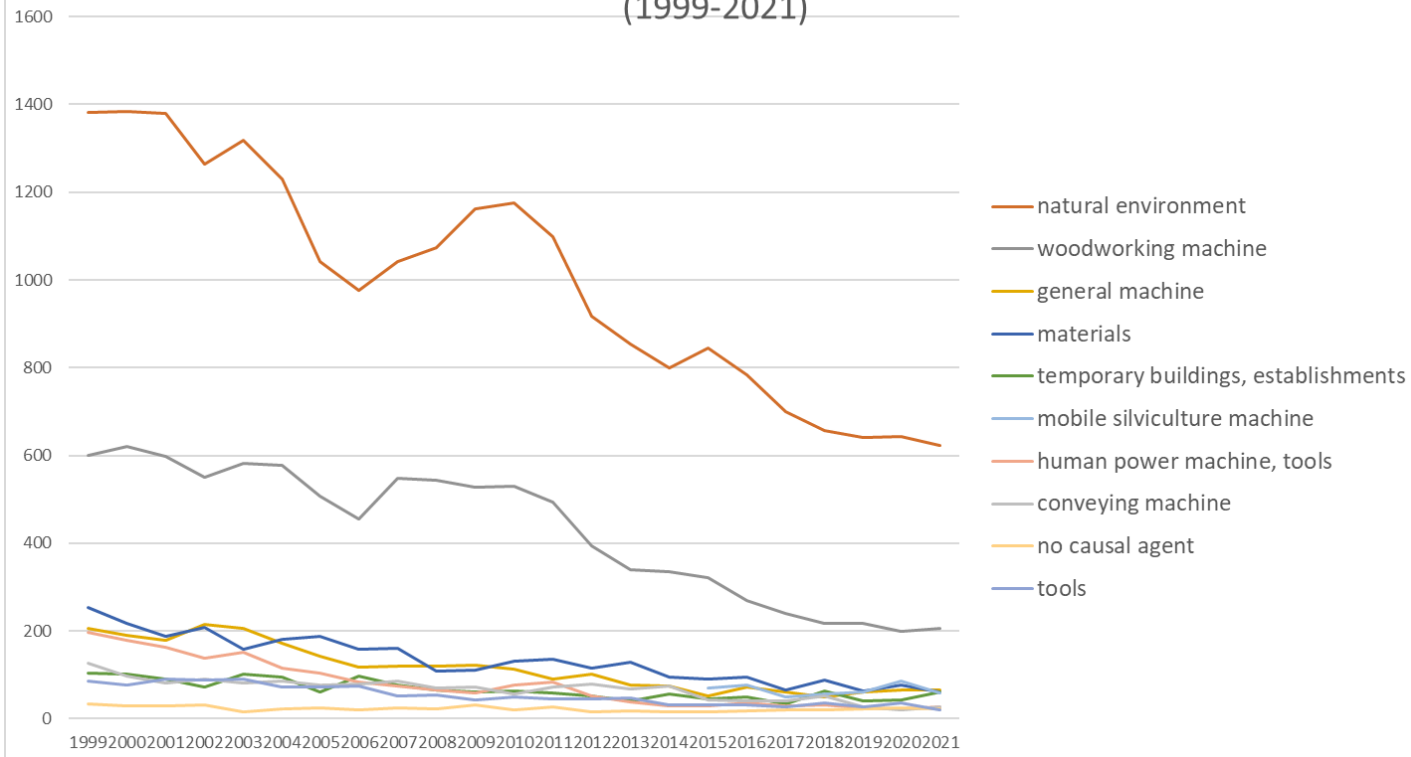


Transition of fatal and non-fatal accidents in each element like as causal agents, type of accidents, etc. in code no. 0602 forestry (1999-2021)



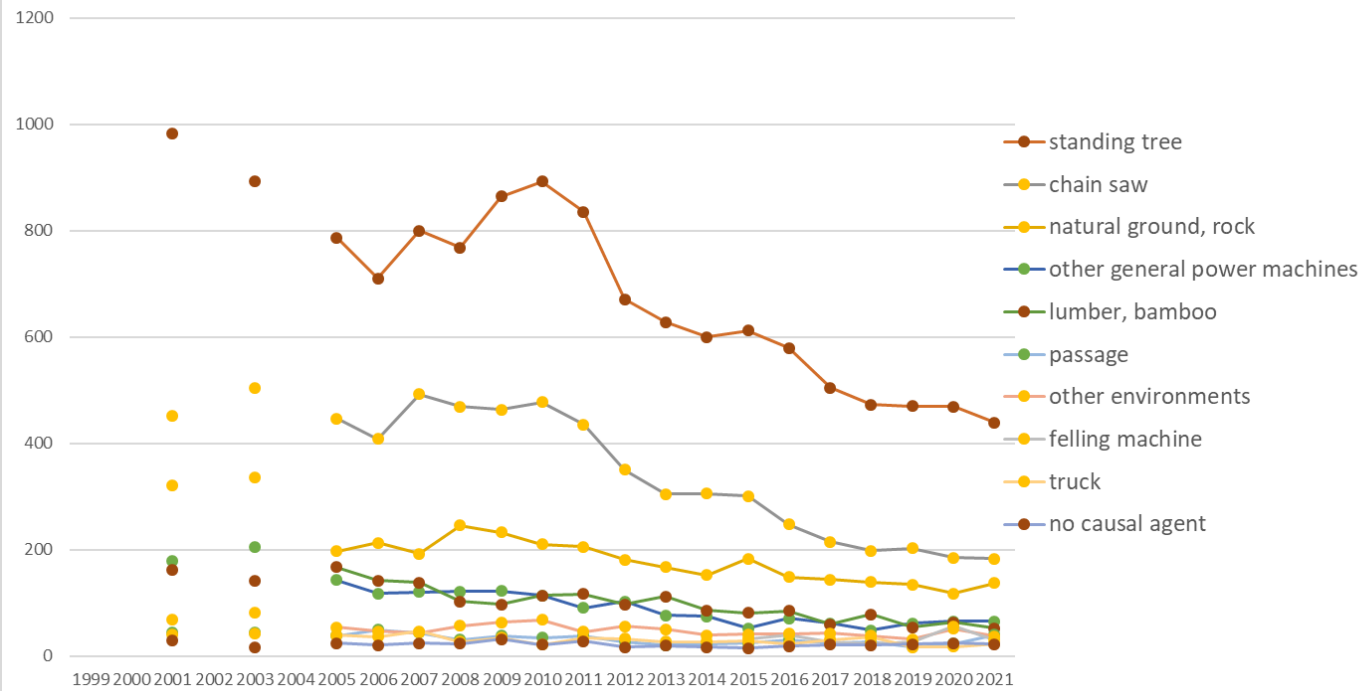
Transition of fatal and non-fatal accidents in large causal agents in code no. 0602 forestry (1999-2021)

Transition of fatal and non-fatal accidents in top 10 middle causal agents
(1999-2021)



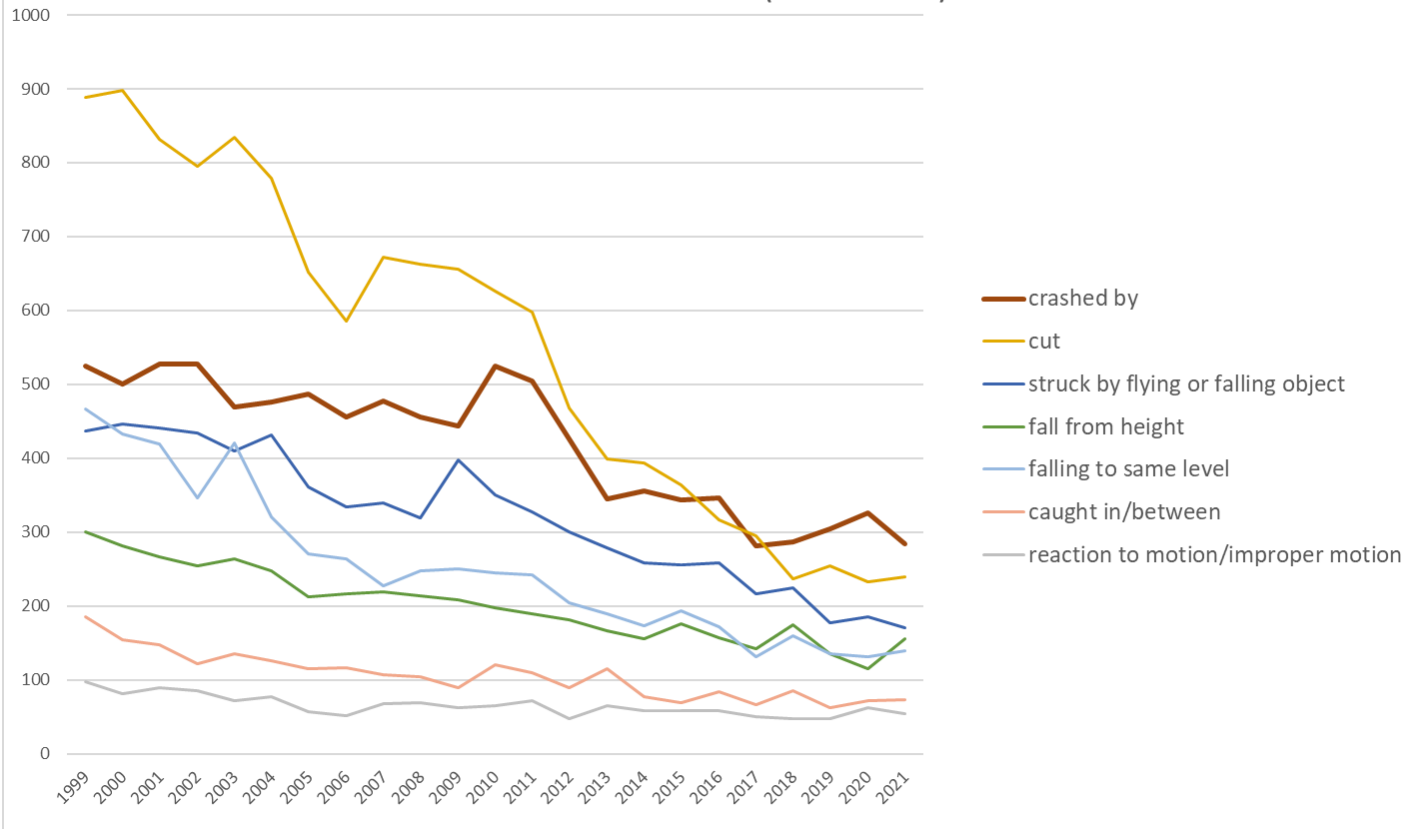
Transition of fatal and non-fatal accidents in middle causal agents in code no. 0602 forestry (1999-2021)

Transition of fatal and non-fatal accidents in top 10 small causal agents
(1999-2021)



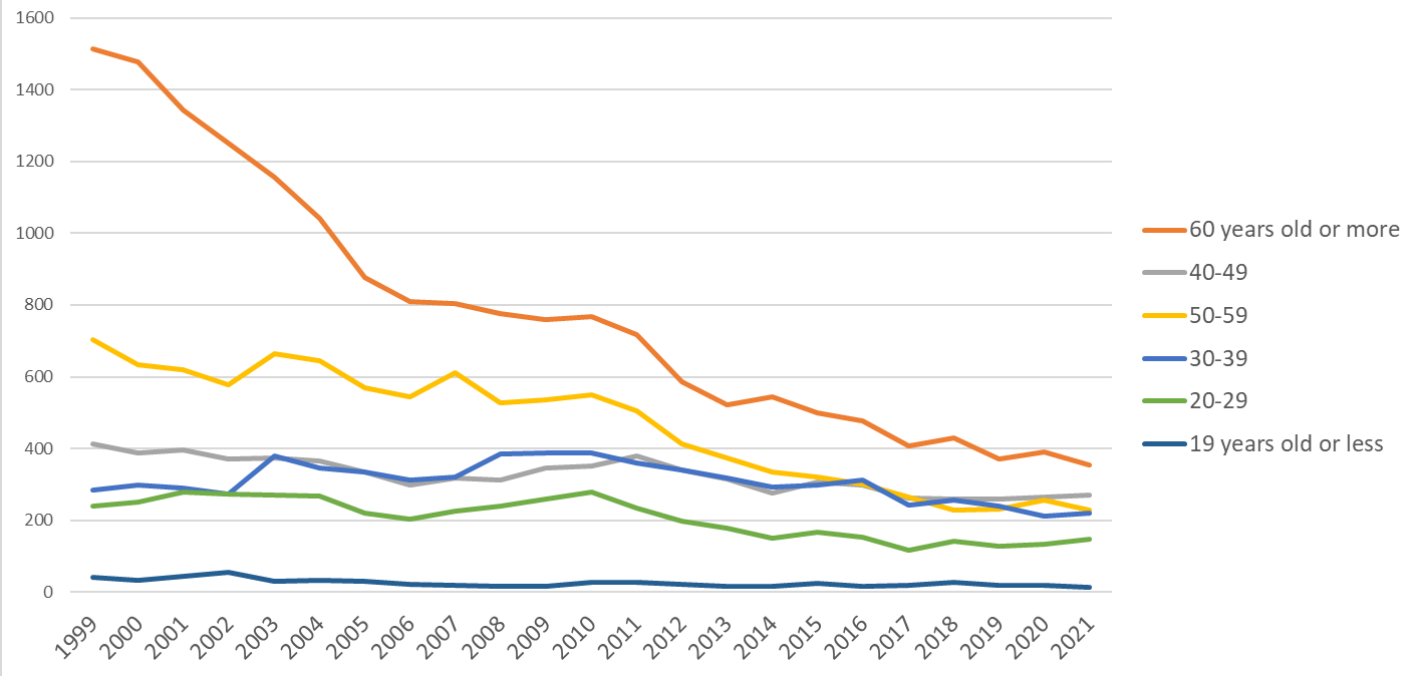
Transition of fatal and non-fatal accidents in small causal agents in code no. 0602 forestry (1999-2021)

Transition of fatal and non-fatal accidents in top 7 type of accidents
(1999-2021)



Transition of fatal and non-fatal accidents in type of accidents in code no. 0602 forestry (1999-2021)

Transition of fatal and non-fatal accidents in workers ages (1999-2021)



Transition of fatal and non-fatal accidents in workers ages in code no. 0602 forestry (1999-2021)

08	cut	888	898	831	795	835	779	652	585	672	663	656	626	598	468	399	393	364	316	295	237	254	233	239	12,676	cut
04	struck by flying or falling object	437	447	441	434	410	432	361	334	340	319	398	351	327	301	279	259	256	259	217	224	178	185	170	7,359	struck by flying or falling object
01	fall from height	301	281	267	255	264	247	213	216	219	214	209	197	190	182	166	156	176	157	142	174	135	115	156	4,632	fall from height
02	falling to same level	467	433	420	347	421	321	271	264	228	248	250	245	242	205	190	173	193	172	132	160	136	132	139	5,789	falling to same level
07	caught in/between	185	155	147	122	135	126	115	116	107	105	89	120	110	89	115	77	69	84	67	85	62	72	73	2,425	caught in/between
19	reaction to motion/improper motion	98	82	89	86	72	77	57	52	68	69	62	65	72	48	65	59	58	59	50	48	48	63	54	1,501	reaction to motion/improper motion
05	collapse	112	95	93	105	110	103	85	71	84	81	93	107	72	64	61	55	73	76	49	45	40	39	34	1,747	collapse
03	crash	84	78	70	64	64	52	62	53	50	45	37	40	43	38	45	35	28	31	41	39	34	40	30	1,103	crash
17	traffic accident (public road)	32	17	13	17	25	23	16	16	17	5	11	29	17	28	8	9	14	10	9	7	16	16	18	373	traffic accident (public road)
90	others	39	62	48	32	43	36	24	19	22	28	42	34	31	26	33	24	19	16	14	27	17	32	16	684	others
11	contact to high/low-temperature	7	10	8	5	9	7	4	5	6	13	5	10	10	12	9	12	13	18	9	7	9	9	8	205	contact to high/low-temperature
09	injury to the sole of the foot	8	8	4	4	7	11	5	1	6	4	6	10	2	6	6	1	5	7	4		11	6	7	129	injury to the sole of the foot
12	contact to harmful substance		7	3		2	2	6		1	1	1	1	2		1	1	4	3	1	2	1	5	3	47	contact to harmful substance
99	unclassifiable	3	6	10	4	6	3	2	1	2	3	1	2	2	1		1	2	2			1	1	2	55	unclassifiable
10	drown							1						1						1				1	4	drown
14	explosion	1	1																					1	3	explosion

16	fire	2	1	1	1	1	2	1	1	3	1	1	1	1	1	1	1	1	1	1	1	1	18	fire		
13	electric shock	1	1	1	2	1	1	1	1	3	1	1	1	1	1	3	1	1	1	1	1	1	11	electric shock		
18	traffic accident (others)	1	1							2				3									7	traffic accident (others)		
15	burst																							burst		
	total	3,191	3,083	2,974	2,799	2,874	2,696	2,365	2,190	2,300	2,257	2,306	2,363	2,224	1,897	1,723	1,611	1,619	1,561	1,314	1,342	1,248	1,275	1,235	48,447	total

Transition of fatal and non-fatal accidents in workers ages in code no. 0602 forestry (1999-2021)

code	Age	1999	2000	2001	2002	2003	2004	2005	2006	2007	2008	2009	2010	2011	2012	2013	2014	2015	2016	2017	2018	2019	2020	2021	total	Age
6	60 years old or more	1,514	1,478	1,344	1,250	1,157	1,042	876	809	803	776	759	769	718	586	523	544	500	478	408	429	372	390	355	17,880	60 years old or more
4	40-49	412	387	396	370	373	364	335	299	318	312	347	352	380	339	314	275	306	298	263	258	260	264	271	7,493	40-49
5	50-59	703	633	621	577	664	644	570	545	611	528	535	550	506	414	375	334	322	302	264	229	231	257	229	10,644	50-59
3	30-39	283	299	290	274	380	345	334	312	322	385	389	387	359	339	317	292	299	313	243	257	239	212	219	7,089	30-39
2	20-29	239	252	280	274	271	268	220	204	227	240	259	279	233	197	178	149	167	153	116	142	128	133	147	4,756	20-29
1	19 years old or less	40	34	43	54	29	33	30	21	19	16	17	26	28	22	16	17	25	17	20	27	18	19	14	585	19 years old or less
	total	3,191	3,083	2,974	2,799	2,874	2,696	2,365	2,190	2,300	2,257	2,306	2,363	2,224	1,897	1,723	1,611	1,619	1,561	1,314	1,342	1,248	1,275	1,235	48,447	total

Transition of fatal and non-fatal accidents in workers scales in code no. 0602 forestry (1999-2021)

code	Workers scale	1999	2000	2001	2002	2003	2004	2005	2006	2007	2008	2009	2010	2011	2012	2013	2014	2015	2016	2017	2018	2019	2020	2021	total	Workers scale
1	9 workers or less	1,698	1,651	1,574	1,399	1,409	1,369	1,261	1,187	1,219	1,196	1,177	1,158	1,079	920	863	821	764	758	672	663	632	617	591	24,678	9 workers or less
2	10-29	725	699	680	692	725	632	542	491	573	566	590	595	593	528	490	451	472	486	395	404	361	399	391	12,480	10-29
3	30-49	389	350	361	354	395	358	306	291	267	265	280	317	277	206	190	199	223	170	152	170	160	166	147	5,993	30-49
4	50-99	264	293	264	275	275	269	208	174	193	184	225	245	230	201	154	109	133	115	68	77	71	72	85	4,184	50-99

39	Kochi	157	156	131		149		142	118	135	128	110	134	119	102	78	93	89	83	71	61	63	79	70	2,268	Kochi
46	Kagoshima	67	83	64		81		77	64	86	65	88	76	65	55	53	46	50	57	48	48	57	51	53	1,334	Kagoshima
22	Shizuoka	78	84	98		79		77	61	64	75	58	68	93	58	49	44	52	42	35	59	27	39	52	1,292	Shizuoka
20	Nagano	93	81	80		101		60	84	63	66	81	90	71	60	64	58	61	44	37	40	40	48	47	1,369	Nagano
3	Iwate	82	89	86		78		58	64	82	59	77	79	72	68	61	71	55	60	56	41	44	48	44	1,374	Iwate
21	Gifu	124	121	135		125		110	108	107	121	93	97	75	56	64	64	61	60	55	68	51	44	43	1,782	Gifu
44	Oita	67	80	65		64		55	66	58	59	70	49	59	46	61	46	40	54	53	53	35	29	43	1,152	Oita
34	Hiroshima	138	111	115		104		75	63	80	59	70	67	75	52	55	43	66	59	41	37	30	34	40	1,414	Hiroshima
30	Wakayama	114	111	102		138		115	80	96	91	101	89	75	62	62	53	51	56	50	48	55	33	39	1,621	Wakayama
33	Okayama	109	100	106		90		100	82	82	77	64	63	79	62	48	33	55	47	31	34	34	34	38	1,368	Okayama
5	Akita	71	61	64		58		39	44	43	44	42	65	53	42	38	38	46	40	34	39	41	39	37	978	Akita
24	Mie	170	137	154		108		103	84	73	82	102	106	74	70	47	44	36	54	36	35	26	41	35	1,617	Mie
28	Hyogo	69	77	82		71		64	56	70	67	83	57	51	49	46	35	46	35	43	27	33	37	35	1,133	Hyogo
32	Shimane	87	100	79		68		58	59	56	55	72	66	79	56	50	64	53	46	39	23	37	34	34	1,215	Shimane
7	Fukushima	49	63	49		62		37	36	44	51	37	52	41	29	34	32	24	45	25	38	29	28	34	839	Fukushima
4	Miyagi	40	42	38		31		39	42	45	40	43	30	33	40	35	33	28	37	29	32	26	31	33	747	Miyagi
43	Kumamoto	97	95	73		72		59	51	64	71	57	53	64	63	49	43	58	41	34	42	46	33	32	1,197	Kumamoto
40	Fukuoka	56	65	80		59		64	48	54	45	44	54	47	49	42	32	31	33	28	19	24	31	31	936	Fukuoka
38	Ehime	72	80	92		98		77	50	61	56	58	65	70	54	51	48	29	36	35	30	40	31	24	1,157	Ehime
10	Gunma	56	45	50		61		31	38	43	37	35	57	38	33	24	22	37	30	27	22	18	26	24	754	Gunma
29	Nara	168	142	109		104		72	86	65	55	71	63	57	59	46	48	41	35	30	38	32	39	21	1,381	Nara
2	Aomori	73	42	35		21		21	19	30	26	35	32	31	26	29	24	21	25	23	21	30	20	21	605	Aomori
35	Yamaguchi	63	81	70		78		72	53	52	53	73	60	66	59	32	39	33	32	24	27	26	21	20	1,034	Yamaguchi
26	Kyoto	64	58	92		69		57	63	65	55	51	48	53	60	40	38	37	36	26	30	26	23	20	1,011	Kyoto
36	Tokushima	62	86	69		53		38	47	42	37	46	51	45	45	30	26	31	32	23	31	8	18	19	839	Tokushima

17	Ishikawa	40	49	46		36		33	21	26	32	29	29	16	26	22	15	22	11	15	19	13	14	19	533	Ishikawa
9	Tochigi	28	29	34		36		27	28	30	32	29	18	23	17	19	29	24	21	13	20	6	18	19	500	Tochigi
31	Tottori	48	58	45		41		30	24	19	30	31	33	32	34	28	24	27	20	16	18	13	24	16	611	Tottori
14	Kanagawa	24	20	17		11		11	15	11	23	18	21	18	12	18	7	12	16	11	17	13	19	15	329	Kanagawa
18	Fukui	41	45	49		35		28	25	28	31	20	30	31	15	22	21	15	19	18	11	11	16	14	525	Fukui
15	Niigata	63	49	32		38		25	30	23	28	27	17	26	15	20	15	16	14	14	19	14	13	14	512	Niigata
19	Yamanashi	27	39	35		30		19	27	25	20	32	16	29	27	20	17	19	23	12	11	14	14	14	470	Yamanashi
23	Aichi	51	34	40		35		26	25	27	28	27	36	36	17	26	27	18	12	20	13	10	19	12	539	Aichi
6	Yamagata	34	28	25		31		27	23	23	30	21	23	20	21	23	25	22	21	7	12	15	9	12	452	Yamagata
41	Saga	21	15	15		22		13	18	18	24	24	23	16	11	17	17	16	14	11	11	11	12	11	340	Saga
12	Chiba	18	17	13		10		12	8	8	12	11	11	8	16	9	3	6	10	4	5	2	5	10	198	Chiba
8	Ibaraki	14	10	14		9		7	7	8	13	8	19	11	11	11	14	14	11	12	13	11	17	9	243	Ibaraki
25	Shiga	31	43	32		34		19	24	12	23	36	41	28	21	17	14	10	4	11	15	5	3	8	431	Shiga
42	Nagasaki	23	21	27		24		15	11	23	19	14	21	17	20	16	10	15	7	14	12	12	9	6	336	Nagasaki
13	Tokyo	24	33	32		13		19	24	21	11	11	24	16	20	18	6	15	9	8	9	6	4	5	328	Tokyo
16	Toyama	22	17	20		25		18	22	14	21	22	23	18	13	7	7	3	9	7	7	4	10	5	294	Toyama
37	Kagawa	27	24	23		30		19	16	22	12	11	14	29	12	6	15	19	13	7	13	11	9	4	336	Kagawa
11	Saitama	14	24	22		18		13	8	10	15	14	14	16	9	6	14	6	4	11	7	5	7	3	240	Saitama
27	Osaka	21	8	17		33		10	8	12	12	14	7	13	3	8	6	5	6	4	3	4	2	3	199	Osaka
47	Okinawa	7	2	6		4		7	2	6	4	4	8			1	4	3	2		1		2		63	Okinawa
	total	3,191	3,083	2,974		2,874		2,365	2,190	2,300	2,257	2,306	2,363	2,224	1,897	1,723	1,611	1,619	1,561	1,314	1,342	1,248	1,275	1,235	42,952	total

Data source : <https://anzeninfo.mhlw.go.jp/user/anzen/tok/anst00.htm>

Return to https://www.jisha.or.jp/english/statistics/202211_23.html