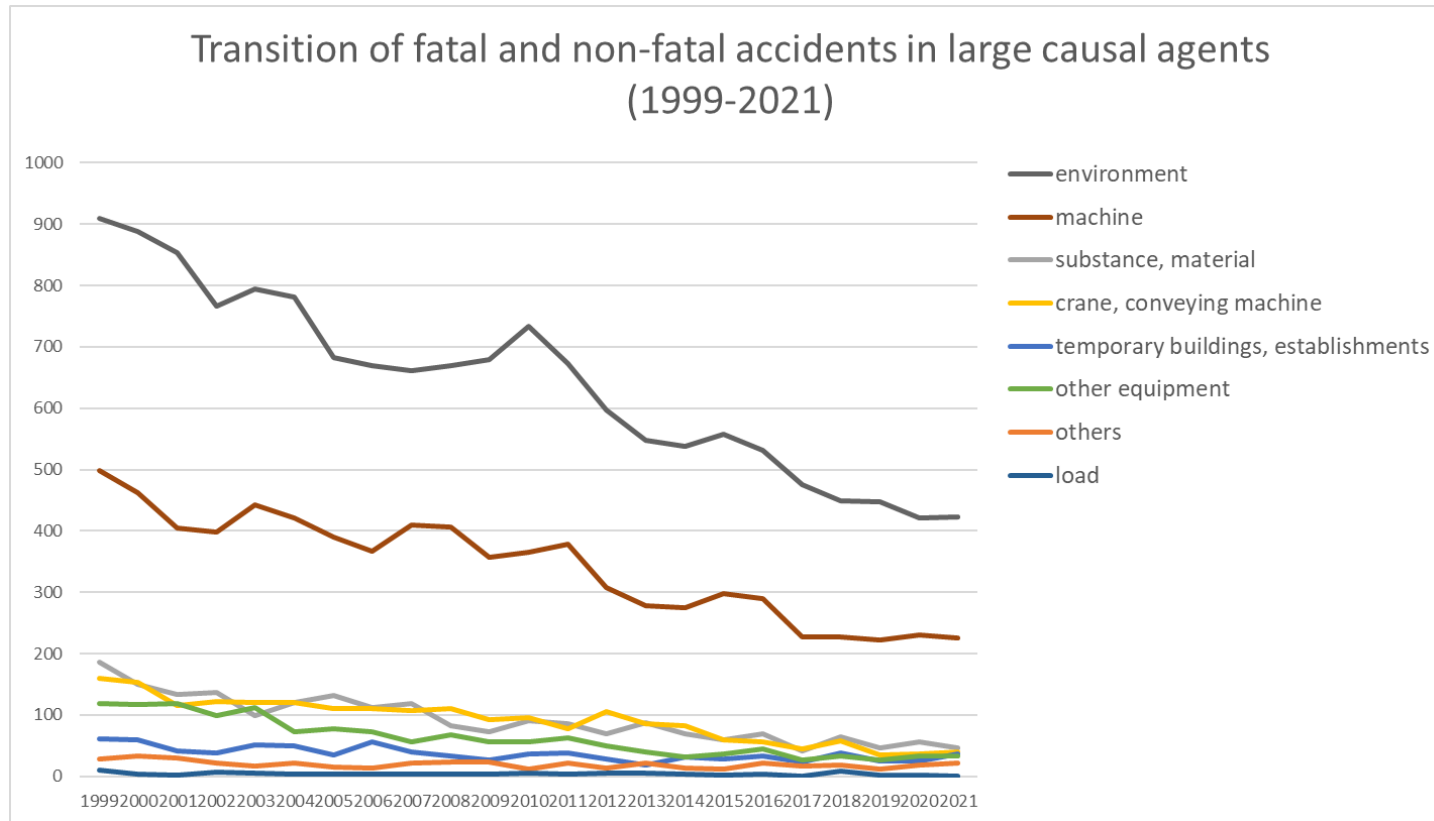
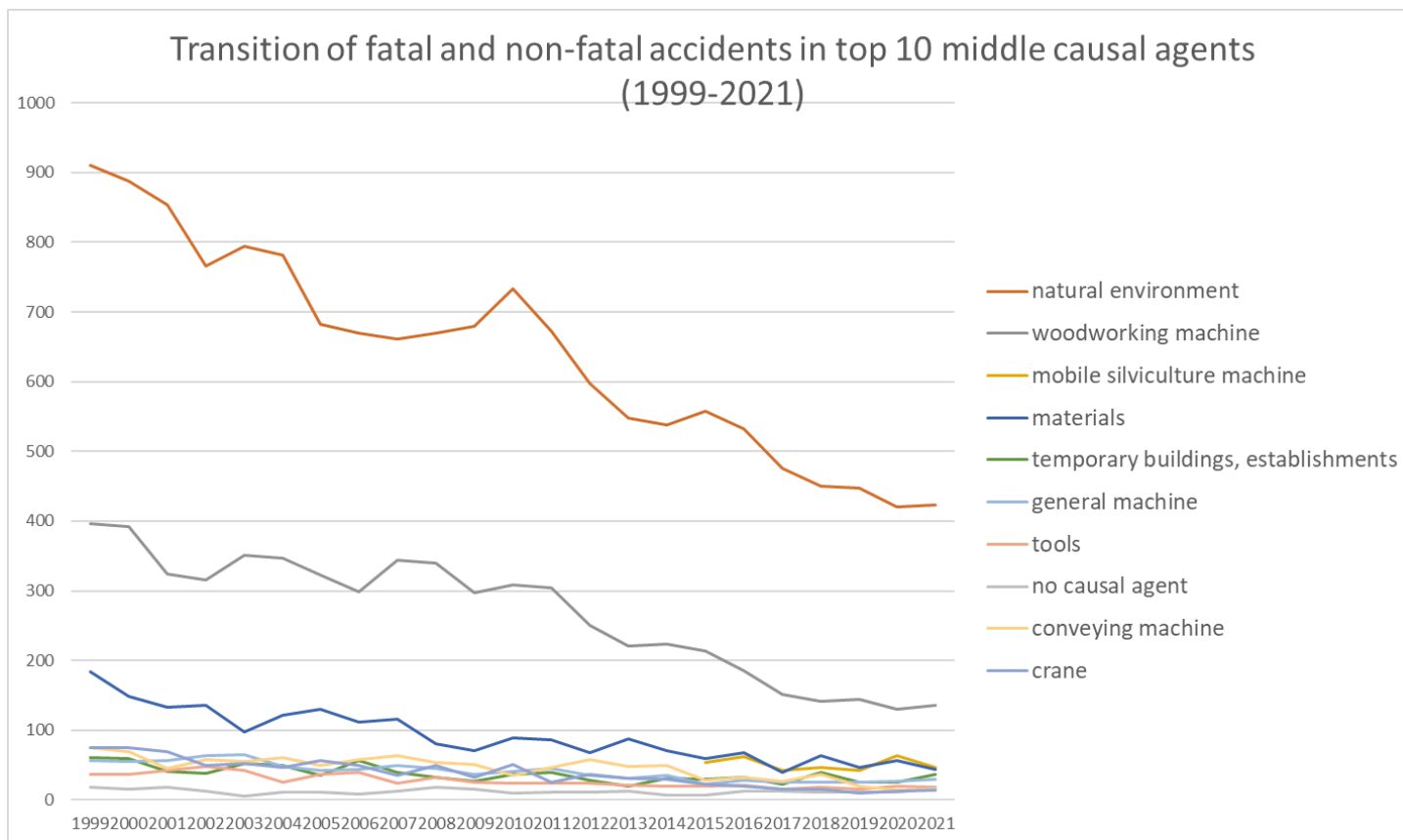


Transition of fatal and non-fatal accidents in each element like as causal agents, type of accidents, etc. in code no. 060201 lumbering (1999-2021)

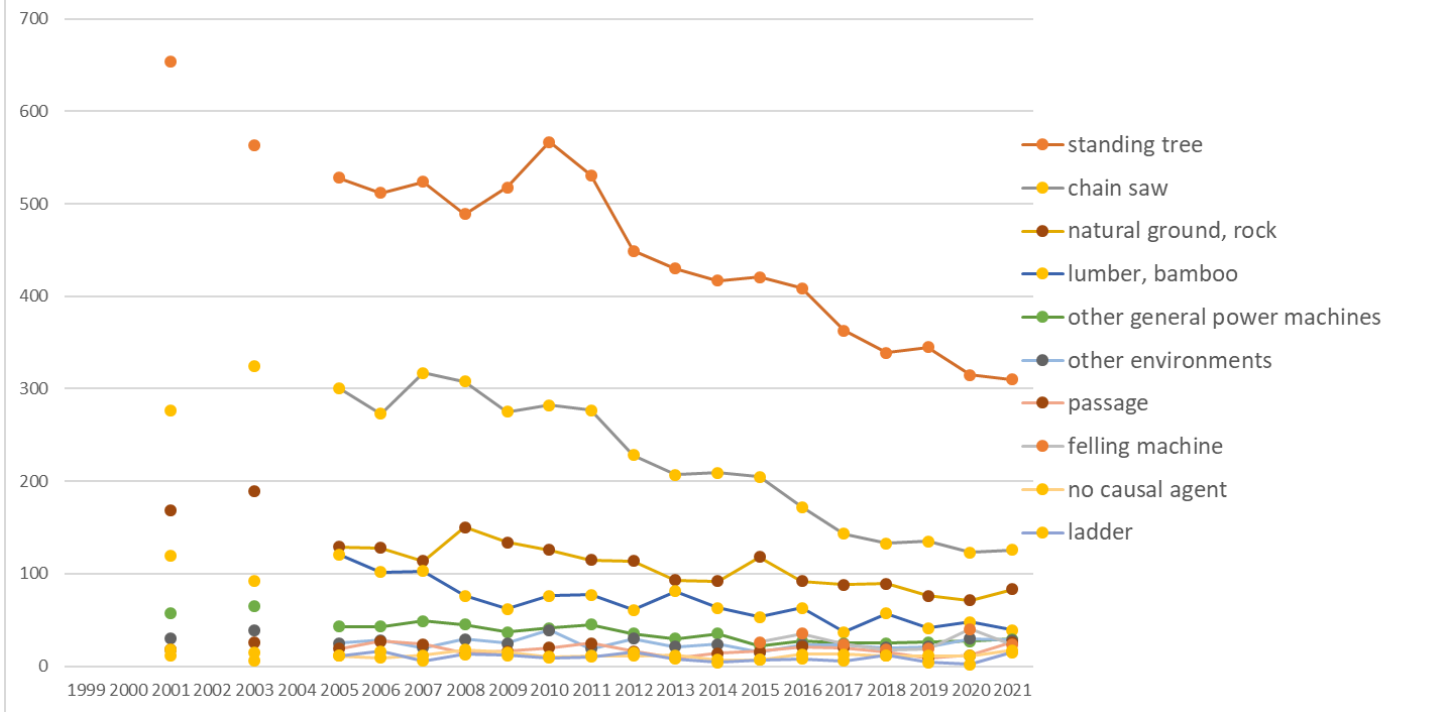


Transition of fatal and non-fatal accidents in large causal agents in code no. 060201 lumbering (1999-2021)



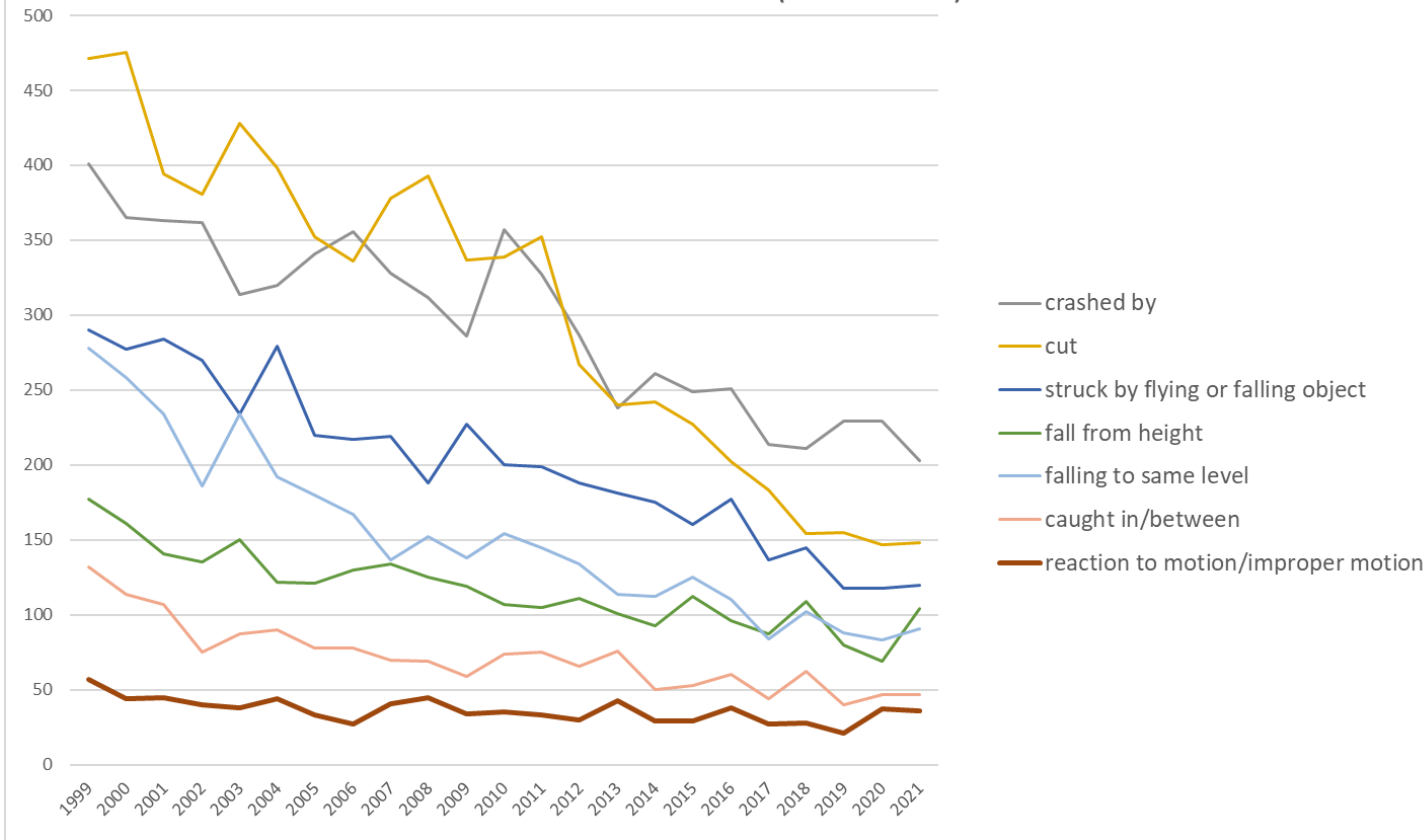
Transition of fatal and non-fatal accidents in middle causal agents in code no. 060201 lumbering (1999-2021)

### Transition of fatal and non-fatal accidents in top 10 small causal agents (1999-2021)



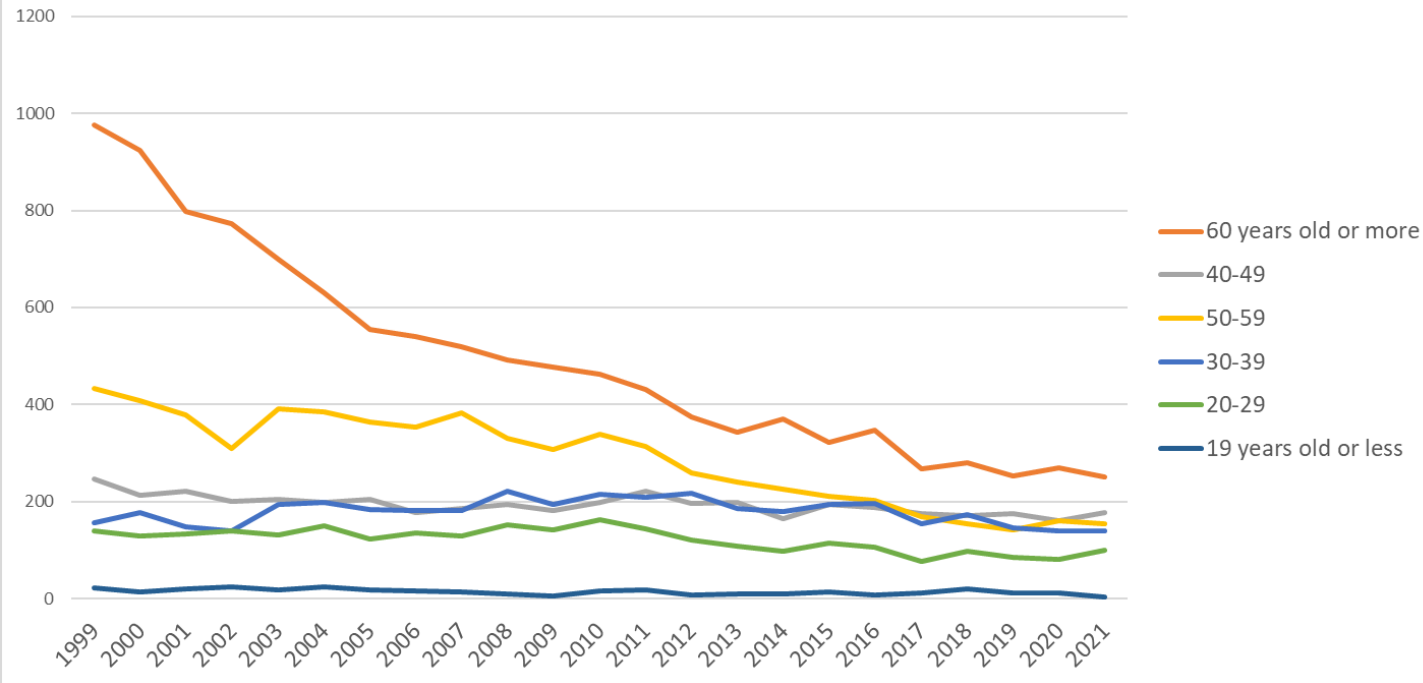
Transition of fatal and non-fatal accidents in small causal agents in code no. 060201 lumbering (1999-2021)

Transition of fatal and non-fatal accidents in top 7 type of accidents  
(1999-2021)



Transition of fatal and non-fatal accidents in type of accidents in code no. 060201 lumbering (1999-2021)

Transition of fatal and non-fatal accidents in workers ages (1999-2021)



Transition of fatal and non-fatal accidents in workers ages in code no. 060201 lumbering (1999-2021)





























Transition of fatal and non-fatal accidents in type of accidents in code no. 060201 lumbering (1999-2021)

| code | Type of accidents                  | 1999 | 2000 | 2001 | 2002 | 2003 | 2004 | 2005 | 2006 | 2007 | 2008 | 2009 | 2010 | 2011 | 2012 | 2013 | 2014 | 2015 | 2016 | 2017 | 2018 | 2019 | 2020 | 2021 | total | Type of accidents                  |
|------|------------------------------------|------|------|------|------|------|------|------|------|------|------|------|------|------|------|------|------|------|------|------|------|------|------|------|-------|------------------------------------|
| 06   | crashed by                         | 401  | 365  | 363  | 362  | 314  | 320  | 341  | 356  | 328  | 312  | 286  | 357  | 327  | 287  | 238  | 261  | 249  | 251  | 214  | 211  | 229  | 229  | 203  | 6,804 | crashed by                         |
| 08   | cut                                | 471  | 475  | 394  | 381  | 428  | 398  | 352  | 336  | 378  | 393  | 337  | 339  | 352  | 267  | 240  | 242  | 227  | 202  | 183  | 154  | 155  | 147  | 148  | 6,999 | cut                                |
| 04   | struck by flying or falling object | 290  | 277  | 284  | 270  | 234  | 279  | 220  | 217  | 219  | 188  | 227  | 200  | 199  | 188  | 181  | 175  | 160  | 177  | 137  | 145  | 118  | 118  | 120  | 4,623 | struck by flying or falling object |
| 01   | fall from height                   | 177  | 161  | 141  | 135  | 150  | 122  | 121  | 130  | 134  | 125  | 119  | 107  | 105  | 111  | 101  | 93   | 112  | 96   | 87   | 109  | 80   | 69   | 104  | 2,689 | fall from height                   |
| 02   | falling to same level              | 278  | 258  | 234  | 186  | 234  | 192  | 180  | 167  | 137  | 152  | 138  | 154  | 145  | 134  | 114  | 112  | 125  | 110  | 84   | 102  | 88   | 83   | 91   | 3,498 | falling to same level              |
| 07   | caught in/between                  | 132  | 114  | 107  | 75   | 87   | 90   | 78   | 78   | 70   | 69   | 59   | 74   | 75   | 66   | 76   | 50   | 53   | 60   | 44   | 62   | 40   | 47   | 47   | 1,653 | caught in/between                  |
| 19   | reaction to motion/improper motion | 57   | 44   | 45   | 40   | 38   | 44   | 33   | 27   | 41   | 45   | 34   | 35   | 33   | 30   | 43   | 29   | 29   | 38   | 27   | 28   | 21   | 37   | 36   | 834   | reaction to motion/improper motion |
| 05   | collapse                           | 80   | 77   | 60   | 71   | 75   | 69   | 60   | 51   | 55   | 53   | 54   | 70   | 46   | 40   | 43   | 38   | 49   | 59   | 37   | 33   | 31   | 23   | 23   | 1,197 | collapse                           |
| 03   | crash                              | 53   | 44   | 44   | 39   | 41   | 37   | 40   | 24   | 26   | 26   | 22   | 23   | 26   | 21   | 27   | 23   | 20   | 22   | 25   | 26   | 26   | 23   | 18   | 676   | crash                              |
| 17   | traffic accident (public road)     | 11   | 11   | 1    | 11   | 12   | 15   | 5    | 6    | 13   | 5    | 9    | 7    | 9    | 15   | 4    | 5    | 7    | 5    | 4    | 6    | 5    | 12   | 14   | 192   | traffic accident (public road)     |
| 90   | others                             | 10   | 26   | 17   | 13   | 14   | 12   | 8    | 10   | 9    | 13   | 17   | 14   | 15   | 10   | 13   | 10   | 9    | 10   | 8    | 17   | 8    | 21   | 12   | 296   | others                             |
| 09   | injury to the sole of the foot     | 4    | 6    | 1    | 1    | 5    | 5    | 3    |      | 2    | 3    | 2    | 8    | 1    | 4    | 3    |      | 4    | 2    | 3    |      | 7    | 6    | 5    | 75    | injury to the sole of the foot     |
| 11   | contact to high/low-temperature    | 4    | 6    | 2    | 3    | 4    | 4    |      | 1    | 3    | 10   | 4    | 4    | 3    | 6    | 4    | 7    | 7    | 10   | 2    | 4    | 7    | 6    | 3    | 104   | contact to high/low-temperature    |
| 99   | unclassifiable                     | 3    | 3    | 4    | 1    | 3    | 1    | 2    | 1    |      | 2    |      | 2    | 2    |      |      |      | 1    | 2    |      |      | 1    |      | 2    | 30    | unclassifiable                     |
| 14   | explosion                          | 1    |      |      |      |      |      |      |      |      |      |      |      |      |      |      |      |      |      |      |      |      |      | 1    | 2     | explosion                          |

|    |                              |       |       |       |       |       |       |       |       |       |       |       |       |       |       |       |       |       |       |     |     |     |     |     |        |                              |
|----|------------------------------|-------|-------|-------|-------|-------|-------|-------|-------|-------|-------|-------|-------|-------|-------|-------|-------|-------|-------|-----|-----|-----|-----|-----|--------|------------------------------|
| 12 | contact to harmful substance |       |       | 1     | 1     | 1     | 3     |       | 1     | 1     |       |       | 1     |       |       | 1     | 1     | 2     |       | 1   |     |     |     |     | 17     | contact to harmful substance |
| 16 | fire                         |       | 1     | 1     | 1     |       | 1     | 2     |       |       |       | 1     | 1     |       |       | 1     |       | 1     | 1     | 1   |     |     |     |     | 12     | fire                         |
| 13 | electric shock               | 1     |       | 1     |       | 1     |       | 1     | 1     |       | 1     |       |       |       |       |       |       | 2     |       |     |     |     |     |     | 8      | electric shock               |
| 10 | drown                        |       |       |       |       |       |       |       |       |       |       |       |       | 1     |       |       |       |       |       | 1   |     |     |     |     | 2      | drown                        |
| 18 | traffic accident (others)    | 1     | 1     |       |       |       |       |       |       |       |       |       |       |       |       |       |       |       |       |     |     |     |     |     | 2      | traffic accident (others)    |
| 15 | burst                        |       |       |       |       |       |       |       |       |       |       |       |       |       |       |       |       |       |       |     |     |     |     |     |        | burst                        |
|    | total                        | 1,974 | 1,869 | 1,700 | 1,589 | 1,641 | 1,590 | 1,449 | 1,405 | 1,416 | 1,398 | 1,309 | 1,395 | 1,340 | 1,179 | 1,088 | 1,046 | 1,054 | 1,049 | 857 | 898 | 816 | 824 | 827 | 29,713 | total                        |

Transition of fatal and non-fatal accidents in workers ages in code no. 060201 lumbering (1999-2021)

| code | Age                  | 1999  | 2000  | 2001  | 2002  | 2003  | 2004  | 2005  | 2006  | 2007  | 2008  | 2009  | 2010  | 2011  | 2012  | 2013  | 2014  | 2015  | 2016  | 2017 | 2018 | 2019 | 2020 | 2021 | total  | Age                  |
|------|----------------------|-------|-------|-------|-------|-------|-------|-------|-------|-------|-------|-------|-------|-------|-------|-------|-------|-------|-------|------|------|------|------|------|--------|----------------------|
| 6    | 60 years old or more | 976   | 924   | 797   | 773   | 700   | 630   | 554   | 541   | 520   | 491   | 478   | 462   | 431   | 375   | 344   | 370   | 322   | 347   | 268  | 281  | 253  | 270  | 250  | 11,357 | 60 years old or more |
| 4    | 40-49                | 246   | 214   | 222   | 201   | 204   | 199   | 204   | 177   | 187   | 194   | 182   | 198   | 222   | 196   | 198   | 164   | 195   | 189   | 175  | 171  | 175  | 161  | 177  | 4,451  | 40-49                |
| 5    | 50-59                | 434   | 409   | 379   | 310   | 392   | 386   | 365   | 353   | 384   | 330   | 307   | 340   | 314   | 260   | 240   | 225   | 212   | 202   | 170  | 155  | 143  | 160  | 155  | 6,625  | 50-59                |
| 3    | 30-39                | 157   | 178   | 148   | 140   | 194   | 199   | 184   | 181   | 181   | 222   | 194   | 215   | 210   | 218   | 187   | 180   | 195   | 197   | 155  | 174  | 147  | 140  | 140  | 4,136  | 30-39                |
| 2    | 20-29                | 139   | 129   | 133   | 140   | 132   | 151   | 124   | 136   | 130   | 152   | 143   | 163   | 144   | 122   | 109   | 97    | 115   | 107   | 76   | 97   | 85   | 81   | 101  | 2,806  | 20-29                |
| 1    | 19 years old or less | 22    | 15    | 21    | 25    | 19    | 25    | 18    | 17    | 14    | 9     | 5     | 17    | 19    | 8     | 10    | 10    | 15    | 7     | 13   | 20   | 13   | 12   | 4    | 338    | 19 years old or less |
|      | total                | 1,974 | 1,869 | 1,700 | 1,589 | 1,641 | 1,590 | 1,449 | 1,405 | 1,416 | 1,398 | 1,309 | 1,395 | 1,340 | 1,179 | 1,088 | 1,046 | 1,054 | 1,049 | 857  | 898  | 816  | 824  | 827  | 29,713 | total                |

Transition of fatal and non-fatal accidents in workers scales in code no. 060201 lumbering (1999-2021)

| code | Workers scale     | 1999  | 2000  | 2001  | 2002 | 2003 | 2004 | 2005 | 2006 | 2007 | 2008 | 2009 | 2010 | 2011 | 2012 | 2013 | 2014 | 2015 | 2016 | 2017 | 2018 | 2019 | 2020 | 2021 | total  | Workers scale     |
|------|-------------------|-------|-------|-------|------|------|------|------|------|------|------|------|------|------|------|------|------|------|------|------|------|------|------|------|--------|-------------------|
| 1    | 9 workers or less | 1,166 | 1,101 | 1,006 | 897  | 929  | 902  | 830  | 821  | 831  | 826  | 750  | 751  | 717  | 618  | 595  | 577  | 528  | 530  | 469  | 469  | 439  | 419  | 407  | 16,578 | 9 workers or less |

|   |                     |       |       |       |       |       |       |       |       |       |       |       |       |       |       |       |       |       |       |     |     |     |     |     |        |                     |
|---|---------------------|-------|-------|-------|-------|-------|-------|-------|-------|-------|-------|-------|-------|-------|-------|-------|-------|-------|-------|-----|-----|-----|-----|-----|--------|---------------------|
| 2 | 10-29               | 411   | 390   | 329   | 354   | 380   | 361   | 314   | 272   | 298   | 295   | 292   | 334   | 333   | 314   | 288   | 283   | 298   | 315   | 245 | 243 | 221 | 242 | 258 | 7,070  | 10-29               |
| 3 | 30-49               | 209   | 179   | 180   | 183   | 175   | 183   | 161   | 161   | 143   | 153   | 148   | 170   | 154   | 113   | 101   | 103   | 132   | 104   | 80  | 108 | 95  | 101 | 90  | 3,226  | 30-49               |
| 4 | 50-99               | 140   | 153   | 131   | 127   | 118   | 120   | 114   | 123   | 112   | 97    | 106   | 115   | 112   | 111   | 89    | 61    | 76    | 74    | 39  | 53  | 47  | 48  | 57  | 2,223  | 50-99               |
| 5 | 100-299             | 48    | 46    | 54    | 28    | 39    | 24    | 30    | 27    | 32    | 27    | 13    | 25    | 24    | 23    | 15    | 21    | 20    | 25    | 24  | 25  | 14  | 14  | 15  | 613    | 100-299             |
| 6 | 300 workers or more |       |       |       |       |       |       |       | 1     |       |       |       |       |       |       |       | 1     |       | 1     |     |     |     |     |     | 3      | 300 workers or more |
|   | total               | 1,974 | 1,869 | 1,700 | 1,589 | 1,641 | 1,590 | 1,449 | 1,405 | 1,416 | 1,398 | 1,309 | 1,395 | 1,340 | 1,179 | 1,088 | 1,046 | 1,054 | 1,049 | 857 | 898 | 816 | 824 | 827 | 29,713 | total               |

Transition of fatal and non-fatal accidents in months in code no. 060201 lumbering (1999-2021)

| code | Month     | 1999  | 2000  | 2001  | 2002  | 2003  | 2004  | 2005  | 2006  | 2007  | 2008  | 2009  | 2010  | 2011  | 2012  | 2013  | 2014  | 2015  | 2016  | 2017 | 2018 | 2019 | 2020 | 2021 | total  | Month     |
|------|-----------|-------|-------|-------|-------|-------|-------|-------|-------|-------|-------|-------|-------|-------|-------|-------|-------|-------|-------|------|------|------|------|------|--------|-----------|
| 10   | October   | 189   | 165   | 173   | 164   | 197   | 135   | 130   | 157   | 141   | 122   | 117   | 125   | 126   | 112   | 96    | 99    | 106   | 98    | 70   | 61   | 74   | 67   | 94   | 2,818  | October   |
| 2    | February  | 151   | 156   | 141   | 139   | 138   | 154   | 104   | 111   | 114   | 111   | 134   | 104   | 118   | 100   | 94    | 80    | 82    | 94    | 74   | 72   | 62   | 78   | 83   | 2,494  | February  |
| 3    | March     | 163   | 187   | 161   | 154   | 144   | 154   | 133   | 132   | 129   | 119   | 115   | 129   | 121   | 123   | 114   | 75    | 92    | 115   | 77   | 78   | 65   | 69   | 80   | 2,729  | March     |
| 7    | July      | 166   | 161   | 142   | 135   | 142   | 115   | 131   | 116   | 95    | 126   | 97    | 119   | 96    | 106   | 87    | 99    | 80    | 92    | 61   | 72   | 64   | 64   | 75   | 2,441  | July      |
| 11   | November  | 179   | 150   | 148   | 152   | 116   | 165   | 147   | 136   | 154   | 111   | 136   | 127   | 119   | 88    | 107   | 80    | 104   | 102   | 87   | 82   | 63   | 79   | 68   | 2,700  | November  |
| 6    | June      | 147   | 133   | 143   | 143   | 103   | 120   | 119   | 105   | 115   | 119   | 98    | 124   | 102   | 79    | 77    | 92    | 75    | 83    | 64   | 71   | 71   | 66   | 66   | 2,315  | June      |
| 12   | December  | 162   | 149   | 124   | 114   | 152   | 147   | 88    | 131   | 124   | 117   | 90    | 114   | 120   | 88    | 78    | 89    | 87    | 76    | 90   | 75   | 54   | 70   | 65   | 2,404  | December  |
| 4    | April     | 182   | 148   | 121   | 117   | 115   | 98    | 122   | 103   | 103   | 123   | 100   | 110   | 104   | 78    | 94    | 109   | 78    | 77    | 62   | 82   | 69   | 69   | 65   | 2,329  | April     |
| 9    | September | 162   | 145   | 143   | 135   | 159   | 149   | 123   | 132   | 107   | 132   | 120   | 141   | 110   | 103   | 91    | 89    | 96    | 84    | 71   | 80   | 91   | 74   | 61   | 2,598  | September |
| 8    | August    | 151   | 175   | 141   | 112   | 124   | 117   | 114   | 101   | 114   | 94    | 113   | 115   | 106   | 99    | 87    | 69    | 78    | 79    | 72   | 70   | 56   | 75   | 59   | 2,321  | August    |
| 5    | May       | 168   | 162   | 149   | 119   | 128   | 123   | 117   | 88    | 92    | 114   | 109   | 104   | 107   | 81    | 74    | 67    | 94    | 79    | 60   | 69   | 75   | 60   | 59   | 2,298  | May       |
| 1    | January   | 154   | 138   | 114   | 105   | 123   | 113   | 121   | 93    | 128   | 110   | 80    | 83    | 111   | 122   | 89    | 98    | 82    | 70    | 69   | 86   | 72   | 53   | 52   | 2,266  | January   |
|      | total     | 1,974 | 1,869 | 1,700 | 1,589 | 1,641 | 1,590 | 1,449 | 1,405 | 1,416 | 1,398 | 1,309 | 1,395 | 1,340 | 1,179 | 1,088 | 1,046 | 1,054 | 1,049 | 857  | 898  | 816  | 824  | 827  | 29,713 | total     |

Transition of fatal and non-fatal accidents in prefectures in code no. 060201 lumbering (1999-2021)



|    |           |       |       |       |  |       |  |       |       |       |       |       |       |       |       |       |       |       |       |     |     |     |     |     |        |           |
|----|-----------|-------|-------|-------|--|-------|--|-------|-------|-------|-------|-------|-------|-------|-------|-------|-------|-------|-------|-----|-----|-----|-----|-----|--------|-----------|
| 36 | Tokushima | 45    | 64    | 40    |  | 29    |  | 28    | 27    | 26    | 23    | 39    | 38    | 31    | 32    | 23    | 17    | 23    | 26    | 15  | 25  | 7   | 15  | 13  | 586    | Tokushima |
| 2  | Aomori    | 41    | 32    | 21    |  | 15    |  | 16    | 10    | 14    | 13    | 18    | 14    | 20    | 19    | 21    | 20    | 14    | 15    | 14  | 13  | 24  | 14  | 13  | 381    | Aomori    |
| 28 | Hyogo     | 34    | 28    | 47    |  | 43    |  | 35    | 42    | 36    | 26    | 40    | 22    | 22    | 14    | 16    | 18    | 21    | 19    | 18  | 16  | 15  | 15  | 12  | 539    | Hyogo     |
| 31 | Tottori   | 27    | 18    | 14    |  | 19    |  | 18    | 12    | 6     | 15    | 16    | 10    | 21    | 17    | 15    | 12    | 20    | 13    | 8   | 17  | 9   | 10  | 11  | 308    | Tottori   |
| 19 | Yamanashi | 9     | 13    | 7     |  | 11    |  | 9     | 12    | 13    | 12    | 12    | 4     | 9     | 16    | 11    | 7     | 10    | 11    | 7   | 8   | 9   | 8   | 10  | 208    | Yamanashi |
| 35 | Yamaguchi | 18    | 35    | 22    |  | 19    |  | 13    | 24    | 18    | 12    | 23    | 29    | 15    | 29    | 12    | 20    | 10    | 12    | 8   | 6   | 8   | 11  | 9   | 353    | Yamaguchi |
| 6  | Yamagata  | 27    | 22    | 18    |  | 22    |  | 17    | 12    | 14    | 19    | 13    | 17    | 11    | 14    | 13    | 17    | 17    | 15    | 5   | 6   | 10  | 5   | 9   | 303    | Yamagata  |
| 17 | Ishikawa  | 9     | 16    | 15    |  | 12    |  | 4     | 6     | 5     | 5     |       | 4     | 2     | 6     | 1     | 3     | 1     | 5     | 8   | 5   | 5   | 6   | 9   | 127    | Ishikawa  |
| 38 | Ehime     | 52    | 58    | 69    |  | 83    |  | 67    | 35    | 49    | 48    | 48    | 13    | 10    | 22    | 24    | 31    | 26    | 18    | 16  | 16  | 20  | 12  | 8   | 725    | Ehime     |
| 18 | Fukui     | 16    | 22    | 13    |  | 9     |  | 14    | 12    | 26    | 25    | 15    | 26    | 14    | 15    | 18    | 15    | 8     | 16    | 9   | 8   | 8   | 13  | 8   | 310    | Fukui     |
| 15 | Niigata   | 43    | 32    | 20    |  | 17    |  | 12    | 16    | 14    | 20    | 18    | 12    | 16    | 8     | 11    | 3     | 9     | 8     | 6   | 6   | 5   | 4   | 7   | 287    | Niigata   |
| 41 | Saga      | 15    | 8     | 10    |  | 16    |  | 8     | 11    | 15    | 19    | 22    | 22    | 15    | 11    | 17    | 17    | 16    | 12    | 9   | 10  | 11  | 10  | 6   | 280    | Saga      |
| 23 | Aichi     | 33    | 25    | 16    |  | 12    |  | 13    | 13    | 11    | 11    | 11    | 16    | 17    | 8     | 11    | 13    | 11    | 8     | 14  | 8   | 5   | 14  | 6   | 276    | Aichi     |
| 8  | Ibaraki   | 10    | 8     | 8     |  | 6     |  | 5     | 4     | 5     | 9     | 4     | 13    | 6     | 10    | 7     | 11    | 2     | 5     | 7   | 6   | 3   | 10  | 6   | 145    | Ibaraki   |
| 12 | Chiba     | 9     | 9     | 7     |  | 8     |  | 2     | 5     | 7     | 6     | 3     | 7     | 3     | 10    | 7     | 1     | 5     | 9     | 3   | 4   | 1   | 4   | 6   | 116    | Chiba     |
| 16 | Toyama    | 5     | 2     | 8     |  | 6     |  | 5     | 7     | 5     | 7     | 9     | 7     | 11    | 5     | 6     | 3     | 1     | 8     | 6   | 5   | 3   | 4   | 5   | 118    | Toyama    |
| 14 | Kanagawa  | 8     | 8     | 7     |  | 2     |  | 4     | 5     | 4     | 5     |       | 4     | 6     | 1     | 6     |       | 4     | 4     | 3   | 5   | 6   | 6   | 4   | 92     | Kanagawa  |
| 13 | Tokyo     | 3     | 6     | 6     |  | 2     |  | 2     | 6     | 7     | 1     | 1     | 2     | 1     | 2     | 6     | 4     | 2     | 1     | 4   | 2   |     | 3   | 4   | 65     | Tokyo     |
| 11 | Saitama   | 7     | 9     | 6     |  | 11    |  | 5     | 2     | 7     | 9     | 9     | 3     | 10    | 5     | 3     | 9     | 4     | 2     | 4   | 6   | 4   | 7   | 3   | 125    | Saitama   |
| 42 | Nagasaki  | 3     | 13    | 15    |  | 4     |  | 6     | 4     | 9     | 8     | 5     | 13    | 9     | 12    | 9     | 7     | 7     | 1     | 7   |     | 4   | 2   | 2   | 140    | Nagasaki  |
| 25 | Shiga     | 4     | 18    | 10    |  | 18    |  | 4     | 7     | 5     | 9     | 7     | 5     | 7     | 2     | 1     | 4     | 3     | 1     | 4   | 3   | 2   | 1   | 2   | 117    | Shiga     |
| 37 | Kagawa    | 9     | 7     | 10    |  | 2     |  | 2     | 1     |       | 3     |       | 2     | 2     |       |       | 3     | 2     |       |     | 2   |     |     | 1   | 46     | Kagawa    |
| 27 | Osaka     | 11    | 2     | 3     |  | 2     |  | 3     | 4     | 3     | 8     | 3     | 2     | 3     | 1     | 5     | 4     | 3     | 4     | 3   |     | 1   |     |     | 65     | Osaka     |
| 47 | Okinawa   |       |       | 2     |  |       |  |       |       | 5     |       |       |       |       |       |       | 2     | 1     |       |     |     |     | 1   |     | 11     | Okinawa   |
|    | total     | 1,974 | 1,869 | 1,700 |  | 1,641 |  | 1,449 | 1,405 | 1,416 | 1,398 | 1,309 | 1,395 | 1,340 | 1,179 | 1,088 | 1,046 | 1,054 | 1,049 | 857 | 898 | 816 | 824 | 827 | 26,534 | total     |

---

Data source : <https://anzeninfo.mhlw.go.jp/user/anzen/tok/anst00.htm>

Return to [https://www.jisha.or.jp/english/statistics/202211\\_23.html](https://www.jisha.or.jp/english/statistics/202211_23.html)