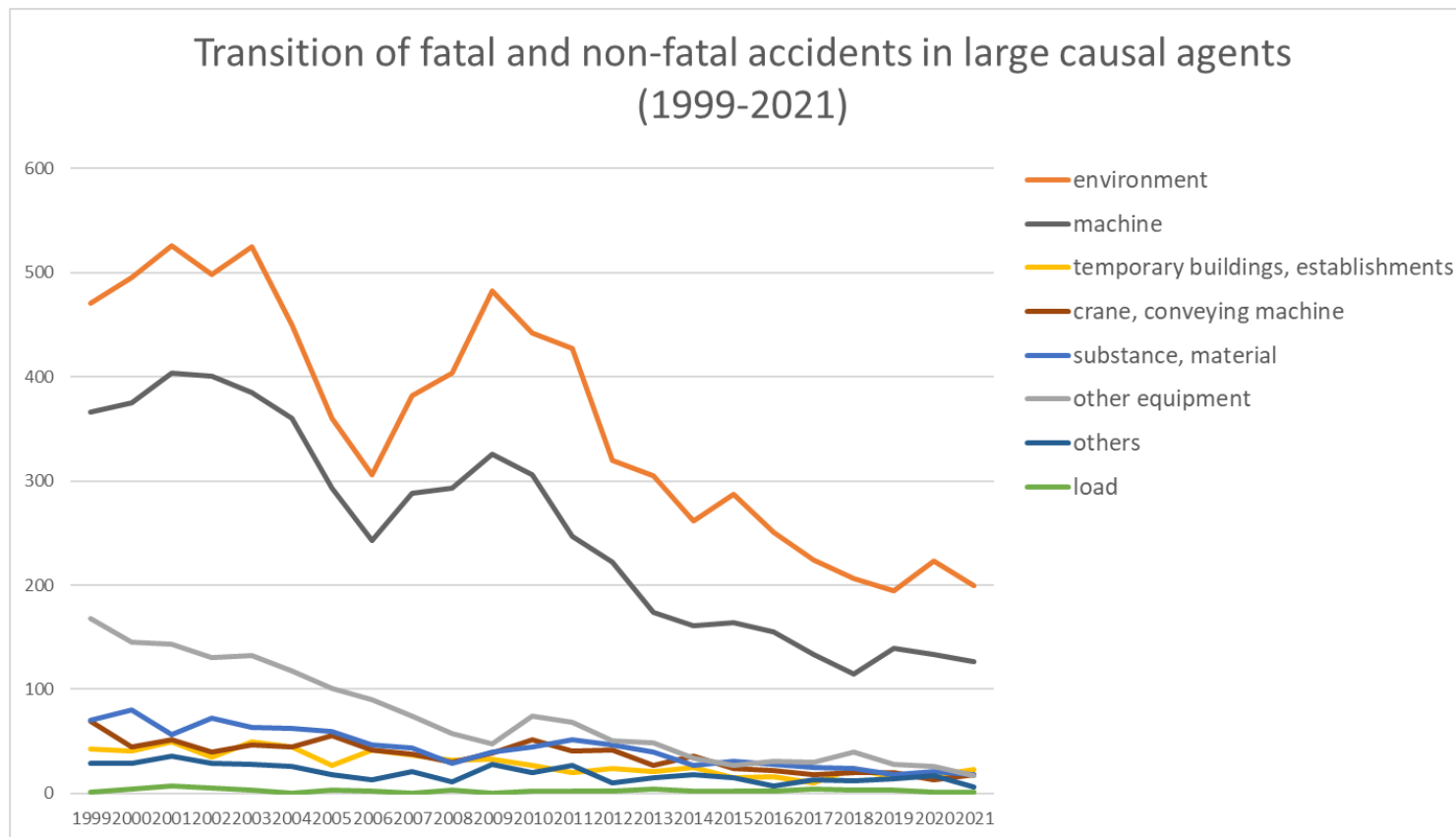
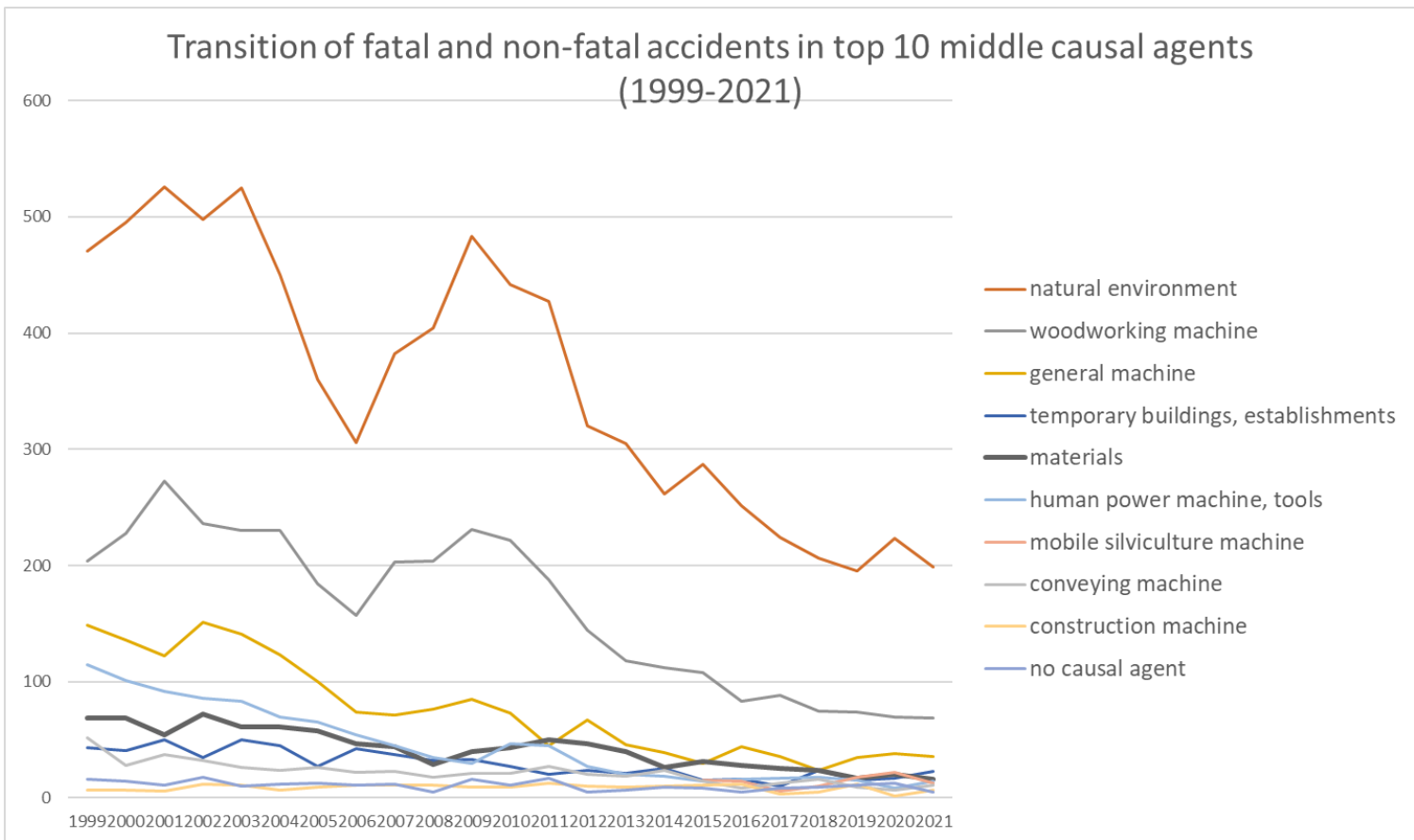


Transition of fatal and non-fatal accidents in each element like as causal agents, type of accidents, etc. in code no. 060209 other forestry (1999-2021)

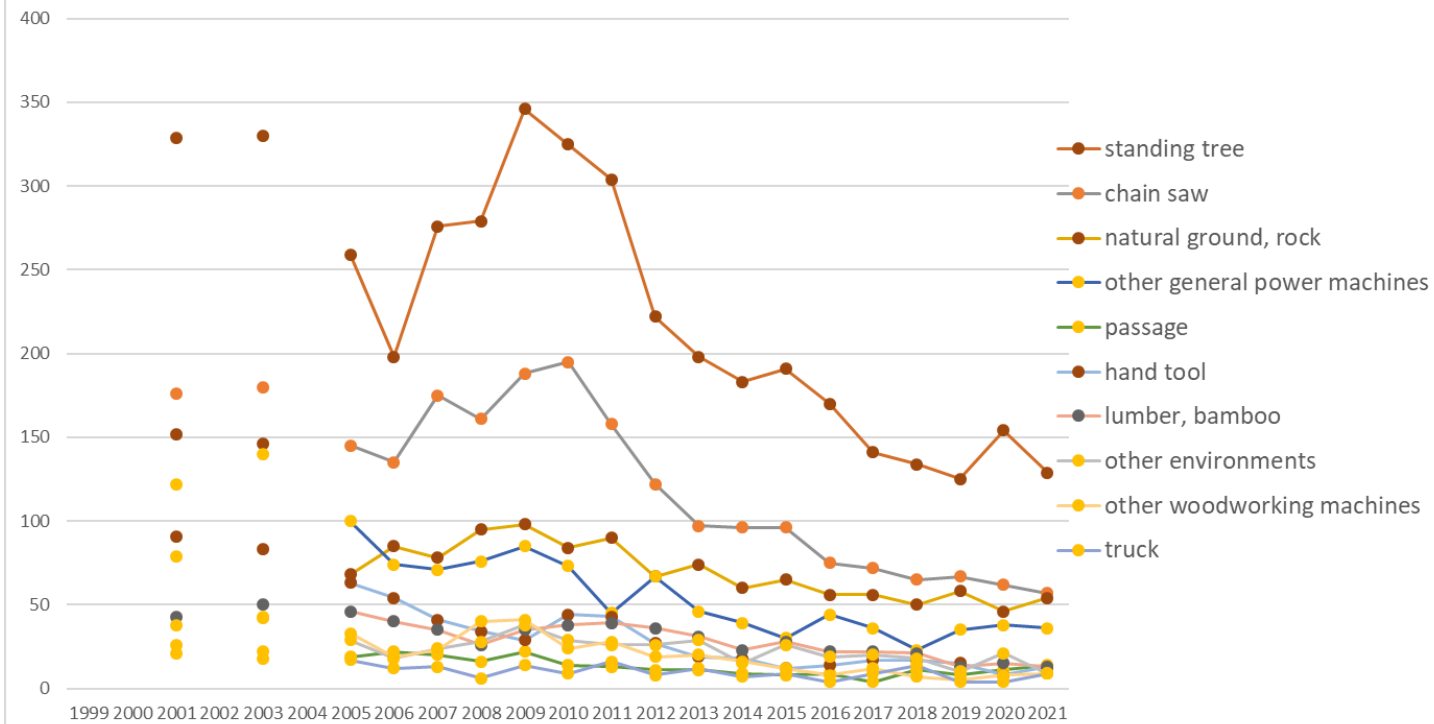


Transition of fatal and non-fatal accidents in large causal agents in code no. 060209 other forestry (1999-2021)



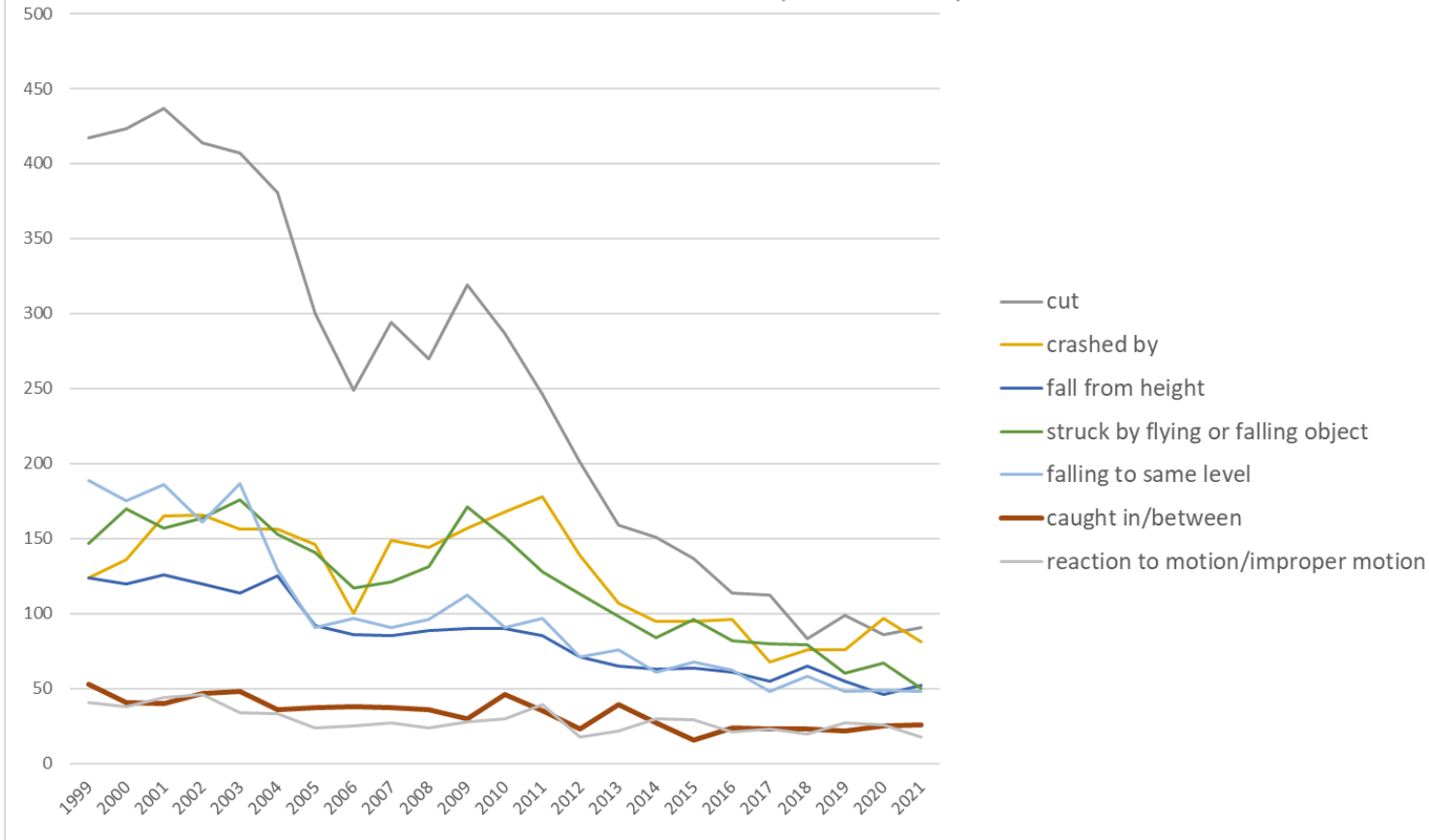
Transition of fatal and non-fatal accidents in middle causal agents in code no. 060209 other forestry (1999-2021)

Transition of fatal and non-fatal accidents in top 10 small causal agents (1999-2021)



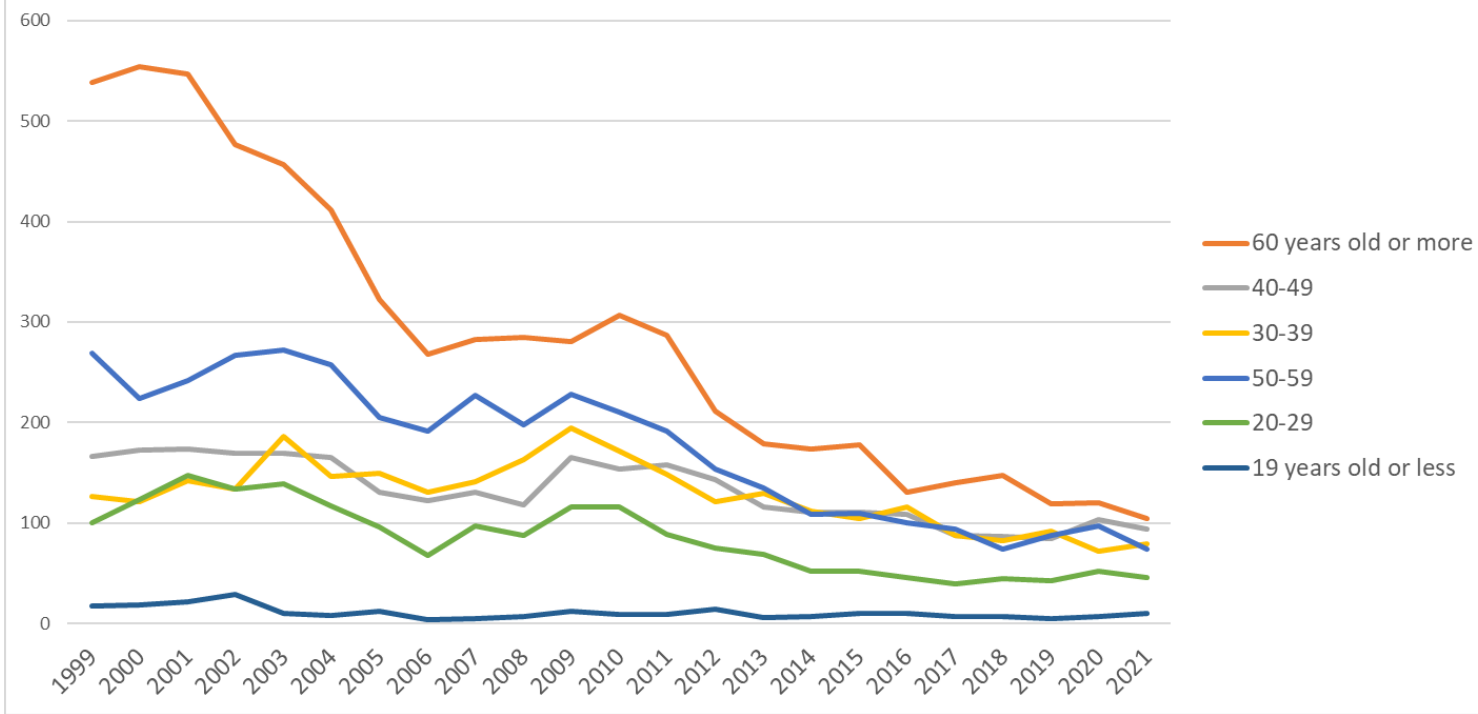
Transition of fatal and non-fatal accidents in small causal agents in code no. 060209 other forestry (1999-2021)

Transition of fatal and non-fatal accidents in top 7 type of accidents
(1999-2021)



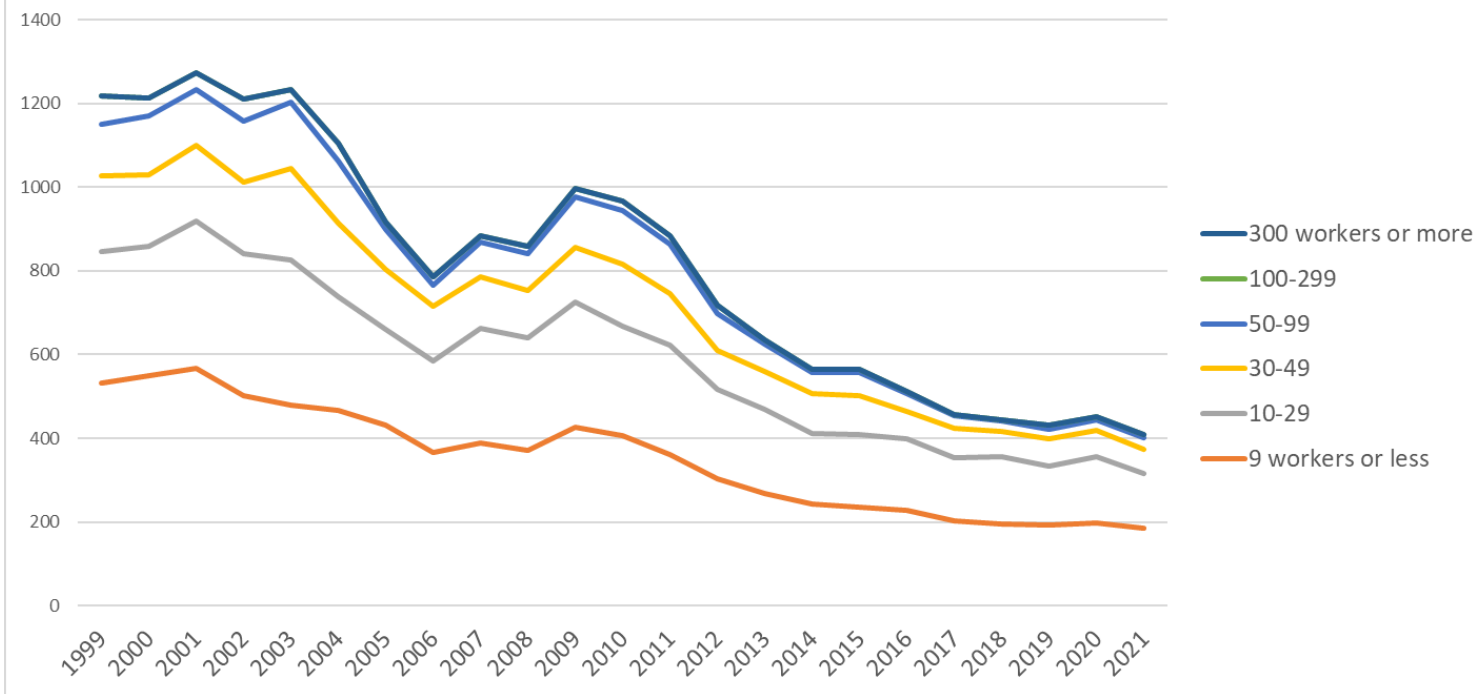
Transition of fatal and non-fatal accidents in type of accidents in code no. 060209 other forestry (1999-2021)

Transition of fatal and non-fatal accidents in workers ages (1999-2021)



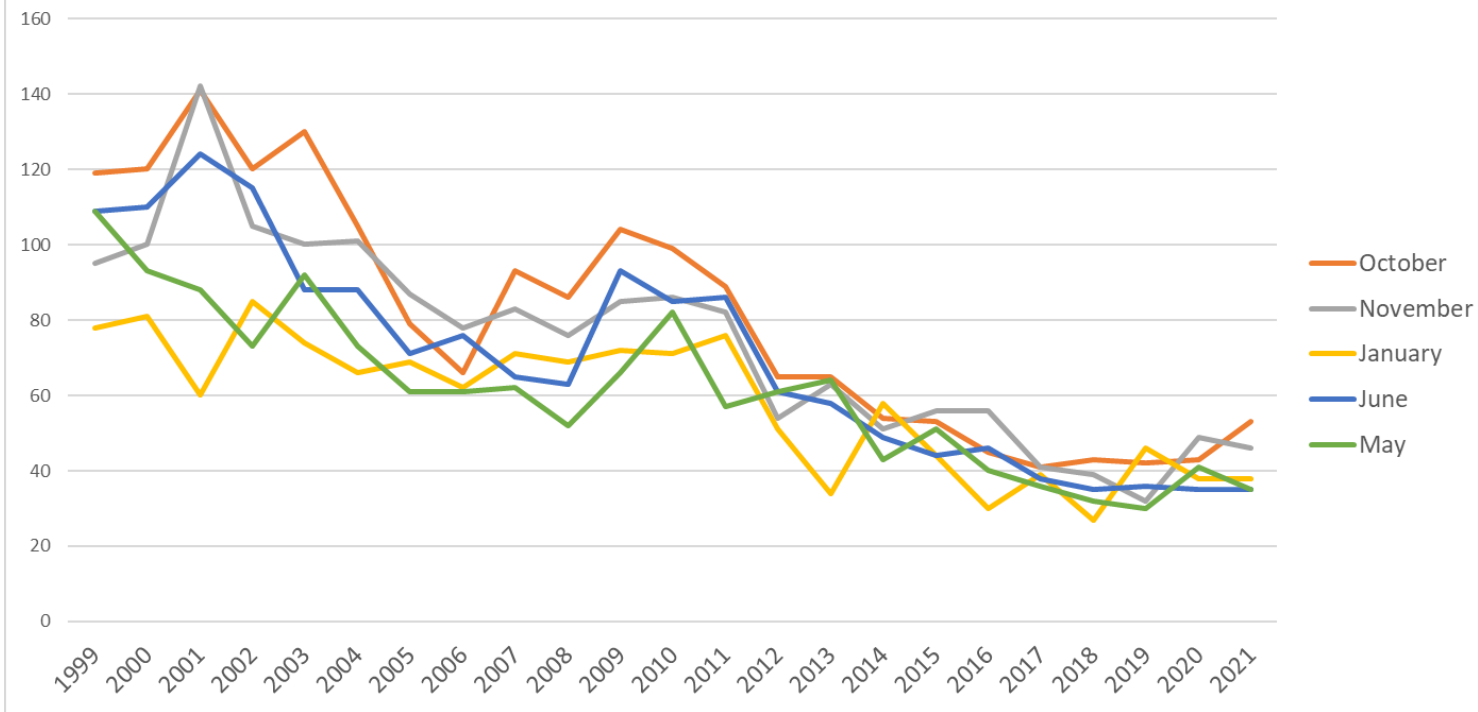
Transition of fatal and non-fatal accidents in workers ages in code no. 060209 other forestry (1999-2021)

Transition of fatal and non-fatal accidents in workers scales (1999-2021)



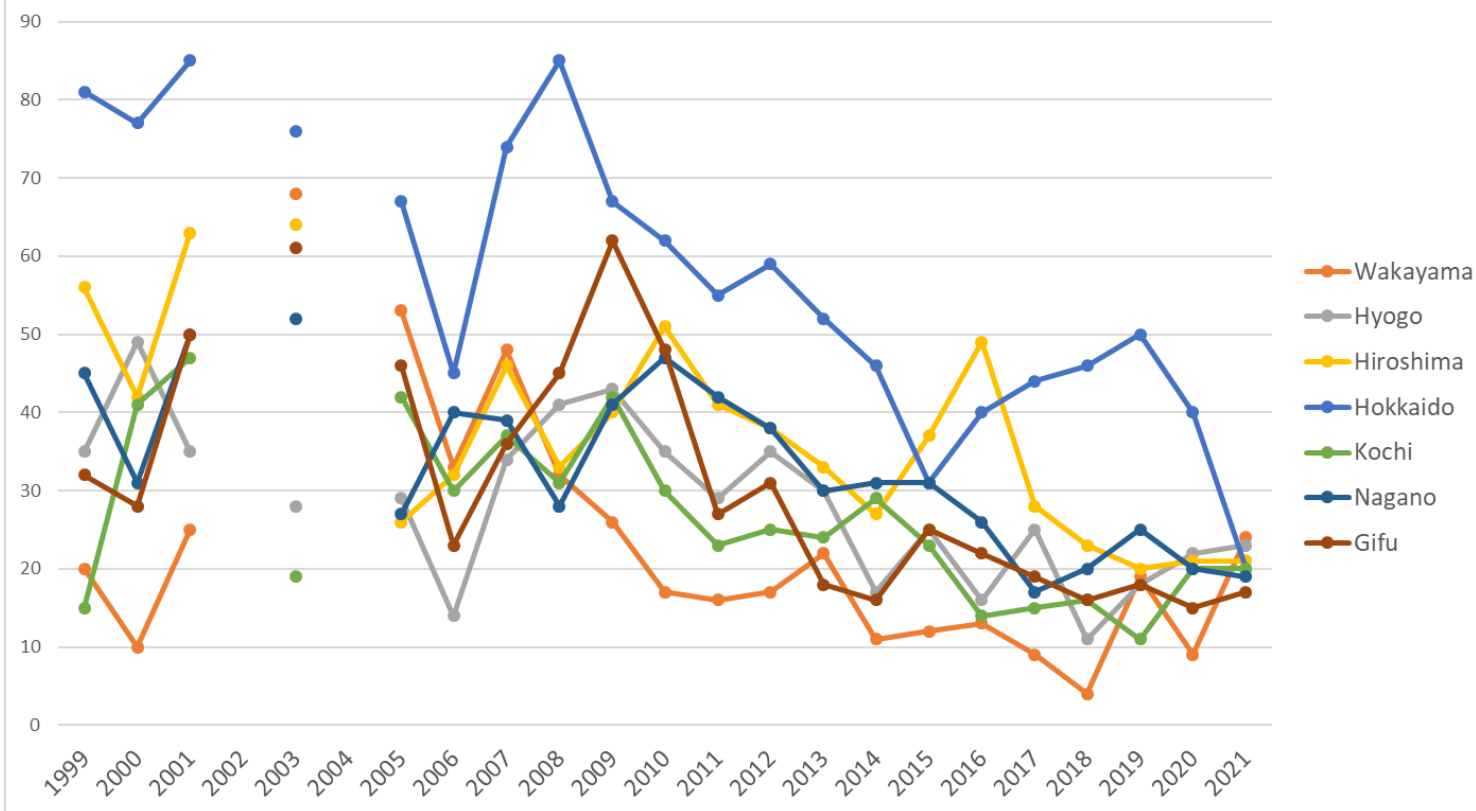
Transition of fatal and non-fatal accidents in workers scales in code no. 060209 other forestry (1999-2021)

Transition of fatal and non-fatal accidents in top 5 months (1999-2021)



Transition of fatal and non-fatal accidents in months in code no. 060209 other forestry (1999-2021)

Transition of fatal and non-fatal accidents in top 7 prefectures (1999-2021)



Transition of fatal and non-fatal accidents in prefectures in code no. 060209 other forestry (1999-2021)

Transition of fatal and non-fatal accidents in large causal agents in code no. 060209 other forestry (1999-2021)

code	Causal (L) agents	1999	2000	2001	2002	2003	2004	2005	2006	2007	2008	2009	2010	2011	2012	2013	2014	2015	2016	2017	2018	2019	2020	2021	total	Causal (L) agents
7	environment	471	495	526	498	525	450	360	306	382	404	483	442	427	320	305	262	287	251	224	206	195	223	199	8,241	environment
1	machine	366	375	404	401	385	360	293	243	288	293	326	306	247	222	174	161	164	155	133	115	139	133	126	5,809	machine
4	temporary buildings, establishments	43	41	50	35	50	45	27	42	37	32	33	27	20	24	21	25	15	16	10	24	15	17	23	672	temporary buildings, establishments

2	crane, conveying machine	69	45	52	40	47	45	55	42	38	30	39	52	41	42	27	36	24	22	18	20	20	13	18	835	crane, conveying machine
5	substance, material	70	80	56	72	63	62	59	47	44	29	40	45	52	47	40	27	31	28	25	24	18	21	18	998	substance, material
3	other equipment	168	145	143	130	132	118	101	90	74	57	48	74	68	51	49	34	27	31	30	40	28	26	17	1,681	other equipment
9	others	29	29	36	29	28	26	18	13	21	11	28	20	27	10	15	18	15	7	13	12	14	17	6	442	others
6	load	1	4	7	5	3		3	2		3		2	2	2	4	2	2	2	4	3	3	1	1	56	load
	total	1,217	1,214	1,274	1,210	1,233	1,106	916	785	884	859	997	968	884	718	635	565	565	512	457	444	432	451	408	18,734	total

Transition of fatal and non-fatal accidents in middle causal agents in code no. 060209 other forestry (1999-2021)

code	Causal (M) agents	1999	2000	2001	2002	2003	2004	2005	2006	2007	2008	2009	2010	2011	2012	2013	2014	2015	2016	2017	2018	2019	2020	2021	total	Causal (M) agents
71	natural environment	471	495	526	498	525	450	360	306	382	404	483	442	427	320	305	262	287	251	224	206	195	223	199	8,241	natural environment
13	woodworking machine	204	228	273	236	230	230	184	157	203	204	231	222	188	144	118	112	108	83	88	75	74	70	69	3,731	woodworking machine
16	general machine	149	136	122	151	141	123	100	74	71	76	85	73	45	67	46	39	30	44	36	24	35	38	36	1,741	general machine
41	temporary buildings, establishments	43	41	50	35	50	45	27	42	37	32	33	27	20	24	21	25	15	16	10	24	15	17	23	672	temporary buildings, establishments
52	materials	69	69	54	72	61	61	58	47	44	29	40	43	50	47	40	26	31	28	25	24	17	20	16	971	materials
36	human power machine, tools	115	101	92	86	83	70	65	54	45	35	30	47	45	27	20	19	14	16	17	18	15	8	14	1,036	human power machine, tools

17	mobile silviculture machine																	15	14	6	10	18	22	13	98	mobile silviculture machine
22	conveying machine	52	28	37	32	26	24	26	22	23	18	21	21	27	20	19	24	14	8	13	16	9	7	11	498	conveying machine
14	construction machine	7	7	6	12	11	7	9	11	11	11	9	9	13	10	9	10	11	12	3	5	12	2	7	204	construction machine
92	no causal agent	16	14	11	18	10	12	13	11	12	5	16	11	17	5	7	9	8	5	8	9	11	13	5	246	no causal agent
21	crane	13	10	7	5	10	11	18	9	8	7	13	8	9	6	4	9	5	7	3	3	2	2	4	173	crane
37	tools	50	40	48	41	48	47	36	35	27	22	16	26	21	21	27	13	12	11	13	19	12	16	3	604	tools
23	vehicle	4	7	8	3	11	10	11	11	7	5	5	23	5	16	4	3	5	7	2	1	9	4	3	164	vehicle
51	hazards, harmful substances	1	11	2		2	1	1					2	2			1					1	1	2	27	hazards, harmful substances
91	other causal agent	13	11	16	7	14	8	4	2	8	6	9	8	9	5	8	7	6	2	5	3	3	4	1	159	other causal agent
61	load	1	4	7	5	3		3	2		3		2	2	2	4	2	2	2	4	3	3	1	1	56	load
15	metal manufacturing machine	5	4	3	2	2				1	3	1	1	2	1	1					1			1	28	metal manufacturing machine
39	other equipments, facilities	3	4	3	3	1	1			1	2		2		2	3	2	2	1	2		3	1	2	38	other equipments, facilities
99	unclassifiable		4	9	4	4	6	1		1		3	1	1			2	1							37	unclassifiable

719	other environments			38		43		29	18	24	28	38	29	26	26	29	15	26	19	20	18	10	21	9	466	other environments
139	other woodworking machines			79		42		33	19	23	40	41	24	28	19	20	16	12	8	12	7	5	8	9	445	other woodworking machines
221	truck			21		22		17	12	13	6	14	9	16	8	12	7	9	4	9	14	4	4	9	210	truck
171	felling machine																6	5	3	5	8	16	7	50	felling machine	
921	no causal agent			11		10		13	11	12	5	16	11	17	5	7	9	8	5	8	9	11	13	5	186	no causal agent
715	high/cold temperature environment			7		5		3	5	3	2		4	6	5	4	4	4	6	7	3	2	2	5	77	high/cold temperature environment
418	building, establishment			3		6		3	2	6	4	4	1		5	3	2	4	1	2	3		3	5	57	building, establishment
142	excavating machine			3		9		5	4	3	3	1	3	6	5	5	3	4	6	2	3	2	2	4	73	excavating machine
231	cars, bus, motorcycle			8		11		11	11	6	3	5	23	5	16	4	3	5	7	2	1	9	4	3	137	cars, bus, motorcycle
173	skyline yarding machine																	5	1	1	2	6		3	18	skyline yarding machine
371	ladder			36		32		25	27	20	17	11	17	14	17	14	11	6	8	8	13	8	7	2	293	ladder
212	mobile crane			4		5		9	3	1	3	5	5	1	2	2	5	2	2	3		1	2	2	57	mobile crane
172	mobile logging machine																	3	5	1	2	4	5	2	22	mobile logging machine
146	vehicle for high lift work					1										1	1	1	1			3		2	10	vehicle for high lift work
519	other hazards, harmful substances					1							1	1								1		2	6	other hazards, harmful substances
379	other tools			12		14		10	6	7	5	5	9	7	4	11	2	5	3	4	5	4	7	1	121	other tools

911	other causal agent			16		14		4	2	8	6	9	8	9	5	8	7	6	2	5	3	3	4	1	120	other causal agent
229	other powered conveying machines			10		4		6	10	9	9	5	10	11	12	6	15	4		1	1	2	2	1	118	other powered conveying machines
416	working platform, boot board			10		17		3	10	6	6	6	10	3	3	7	5	3	4	2	6	4		1	106	working platform, boot board
521	metal material			7		8		4	2	5	3	4	3	6	6	5		1	5	1	1	2		1	64	metal material
217	lumberyard equipment, logging cableway			3		5		6	3	6	2	5	2	5	3		2	1	4		2	1		1	51	lumberyard equipment, logging cableway
523	stone, sand, substance			3		3		7	5	2		1	2	5	4	4	3			2		2	5	1	49	stone, sand, substance
131	circular sawing machine			14		6		3		5	3	1	3	2	3					3	2	2		1	48	circular sawing machine
611	load			6		3		3	2		2		1	2	2	4	2	2	2	4	3	2	1	1	42	load
141	leveling, transporting or loading machine			2		1		4	2	3	5	1	1	3		1	2	1	5		1	6		1	39	leveling, transporting or loading machine
419	other temporary buildings, establishments			4		4		1	5	2	3	1		2	1		6		1		2	1	1	1	35	other temporary buildings, establishments
413	stairs, landing stage			3		2		1	2	3	3		2	1						2	1	1	2	1	24	stairs, landing stage
159	other metal manufacturing machines			3		2			1	3	1	1	2											1	14	other metal manufacturing machines
222	forklift			4				1		1							1		1	2		1		1	12	forklift
	human power																									human power

363	machine			1				1		3	1			1		1					1	11	machine		
415	roof, beam, haze, crossbeam, principal rafter			2		2							1	2		2				1		1	11	roof, beam, haze, crossbeam, principal rafter	
529	other materials			1				1		2				1		2	1		2			1	11	other materials	
133	wood planer machine					1		2	2			1							1			1	8	wood planer machine	
179	other mobile silviculture machine															1	3	1	1		1	1	8	other mobile silviculture machine	
713	water					1		1				1				1			1			1	6	water	
135	chamfering machine, router, woodworking milling machine								1													1	3	chamfering machine, router, woodworking milling machine	
714	abnormal environment									1				1								1	3	abnormal environment	
218	simple skyline yarding equipment															1						1	2	simple skyline yarding equipment	
149	other construction machines			1					5	5	3	7	5	4	5		4	2		1	1		43	other construction machines	
391	other equipment, facilities			3		1			1	2		2		2	3	2	2	1	2		3	1	2	27	other equipment, facilities
999	unclassifiable			9		4		1		1		3	1	1		2	1						23	unclassifiable	
219	other powered crane							3	2		2	3	1	3	1	2	2	1	1				21	other powered crane	

372	slinging tool					2		1	2						2		1		1	1		2		12	slinging tool
224	conveyor			1				1			1	1			1		1	1		1		1		9	conveyor
227	rough terrain hauler							1			1		2			1		2			2		9	rough terrain hauler	
361	human power cranes							1		1		1			1	1	1		1				7	human power cranes	
121	power transmission mechanism					1					1				1			2				1		6	power transmission mechanism
411	scaffolding			2					1					1		1							5	scaffolding	
134	hollow chisel mortiser, wood borer			3				1															4	hollow chisel mortiser, wood borer	
145	demolition machine													1		2					1		4	demolition machine	
225	loader			1							1	1								1			4	loader	
362	human power hauling equipment												3	1									4	human power hauling equipment	
414	opening					1								1				1		1			4	opening	
512	inflammable substance					1							1			1						1	4	inflammable substance	
514	harmful substance			2				1					1										4	harmful substance	
612	machine/equipment as load			1							1		1								1		4	machine/equipment as load	
132	band sawing machine			1		1														1			3	band sawing machine	
211	crane								1	1										1			3	crane	
239	other vehicles									1	2												3	other vehicles	

11	high/low-temperature	3	4	6	2	5	3	4	4	3	3	1	6	7	6	5	5	6	8	7	3	2	3	5	101	high/low-temperature	
90	others	29	36	31	19	29	24	16	9	13	15	25	20	16	16	20	14	10	6	6	10	9	11	4	388	others	
17	traffic accident (public road)	21	6	12	6	13	8	11	10	4		2	22	8	13	4	4	7	5	5	1	11	4	4	181	traffic accident (public road)	
12	contact to harmful substance		7	2		1	1	3				1	1	1		1		3	1	1	1	1	2	3	30	contact to harmful substance	
09	injury to the sole of the foot	4	2	3	3	2	6	2	1	4	1	4	2	1	2	3	1	1	5	1		4		2	54	injury to the sole of the foot	
10	drown							1																1	2	drown	
99	unclassifiable		3	6	3	3	2			2	1	1			1		1	1					1		25	unclassifiable	
16	fire	2								1		2											1		6	fire	
18	traffic accident (others)										2					3									5	traffic accident (others)	
13	electric shock							1											1			1			3	electric shock	
14	explosion		1																						1	explosion	
15	burst																										burst
	total	1,217	1,214	1,274	1,210	1,233	1,106	916	785	884	859	997	968	884	718	635	565	565	512	457	444	432	451	408	18,734	total	

Transition of fatal and non-fatal accidents in workers ages in code no. 060209 other forestry (1999-2021)

code	Age	1999	2000	2001	2002	2003	2004	2005	2006	2007	2008	2009	2010	2011	2012	2013	2014	2015	2016	2017	2018	2019	2020	2021	total	Age
6	60 years old or more	538	554	547	477	457	412	322	268	283	285	281	307	287	211	179	174	178	131	140	148	119	120	105	6,523	60 years old or more
4	40-49	166	173	174	169	169	165	131	122	131	118	165	154	158	143	116	111	111	109	88	87	85	103	94	3,042	40-49

3	30-39	126	121	142	134	186	146	150	131	141	163	195	172	149	121	130	112	104	116	88	83	92	72	79	2,953	30-39
5	50-59	269	224	242	267	272	258	205	192	227	198	228	210	192	154	135	109	110	100	94	74	88	97	74	4,019	50-59
2	20-29	100	123	147	134	139	117	96	68	97	88	116	116	89	75	69	52	52	46	40	45	43	52	46	1,950	20-29
1	19 years old or less	18	19	22	29	10	8	12	4	5	7	12	9	9	14	6	7	10	10	7	7	5	7	10	247	19 years old or less
	total	1,217	1,214	1,274	1,210	1,233	1,106	916	785	884	859	997	968	884	718	635	565	565	512	457	444	432	451	408	18,734	total

Transition of fatal and non-fatal accidents in workers scales in code no. 060209 other forestry (1999-2021)

code	Workers scale	1999	2000	2001	2002	2003	2004	2005	2006	2007	2008	2009	2010	2011	2012	2013	2014	2015	2016	2017	2018	2019	2020	2021	total	Workers scale
1	9 workers or less	532	550	568	502	480	467	431	366	388	370	427	407	362	302	268	244	236	228	203	194	193	198	184	8,100	9 workers or less
2	10-29	314	309	351	338	345	271	228	219	275	271	298	261	260	214	202	168	174	171	150	161	140	157	133	5,410	10-29
3	30-49	180	171	181	171	220	175	145	130	124	112	132	147	123	93	89	96	91	66	72	62	65	65	57	2,767	30-49
4	50-99	124	140	133	148	157	149	94	51	81	87	119	130	118	90	65	48	57	41	29	24	24	24	28	1,961	50-99
5	100-299	67	43	41	51	31	44	18	19	16	19	21	23	21	19	11	9	6	6	3	3	10	7	6	494	100-299
6	300 workers or more		1															1							2	300 workers or more
	total	1,217	1,214	1,274	1,210	1,233	1,106	916	785	884	859	997	968	884	718	635	565	565	512	457	444	432	451	408	18,734	total

Transition of fatal and non-fatal accidents in months in code no. 060209 other forestry (1999-2021)

code	Month	1999	2000	2001	2002	2003	2004	2005	2006	2007	2008	2009	2010	2011	2012	2013	2014	2015	2016	2017	2018	2019	2020	2021	total	Month	
10	October	119	120	141	120	130	105	79	66	93	86	104	99	89	65	65	54	53	45	41	43	42	43	53	1,855	October	
11	November	95	100	142	105	100	101	87	78	83	76	85	86	82	54	63	51	56	56	41	39	32	49	46	1,707	November	
1	January	78	81	60	85	74	66	69	62	71	69	72	71	76	51	34	58	44	30	39	27	46	38	38	1,339	January	
6	June	109	110	124	115	88	88	71	76	65	63	93	85	86	61	58	49	44	46	38	35	36	35	35	1,610	June	

5	May	109	93	88	73	92	73	61	61	62	52	66	82	57	61	64	43	51	40	36	32	30	41	35	1,402	May
8	August	110	113	119	112	133	96	103	70	81	70	82	89	92	59	48	38	48	45	32	33	26	27	33	1,659	August
7	July	123	121	127	127	142	117	87	67	80	73	86	84	80	63	63	55	49	45	45	35	39	38	31	1,777	July
12	December	91	99	95	114	80	110	54	53	77	61	75	62	51	49	50	44	40	35	30	35	35	29	31	1,400	December
9	September	92	106	95	102	146	96	94	78	78	96	92	71	72	56	51	60	34	30	47	42	34	36	29	1,637	September
3	March	110	105	86	88	85	85	71	60	62	72	86	79	74	72	65	41	56	48	34	44	37	38	28	1,526	March
2	February	95	86	98	86	88	101	70	60	62	77	85	89	70	65	33	33	42	54	47	50	34	38	26	1,489	February
4	April	86	80	99	83	75	68	70	54	70	64	71	71	55	62	41	39	48	38	27	29	41	39	23	1,333	April
	total	1,217	1,214	1,274	1,210	1,233	1,106	916	785	884	859	997	968	884	718	635	565	565	512	457	444	432	451	408	18,734	total

Transition of fatal and non-fatal accidents in prefectures in code no. 060209 other forestry (1999-2021)

code	Prefecture	1999	2000	2001	2002	2003	2004	2005	2006	2007	2008	2009	2010	2011	2012	2013	2014	2015	2016	2017	2018	2019	2020	2021	total	Prefecture
30	Wakayama	20	10	25		68		53	33	48	32	26	17	16	17	22	11	12	13	9	4	19	9	24	488	Wakayama
28	Hyogo	35	49	35		28		29	14	34	41	43	35	29	35	30	17	25	16	25	11	18	22	23	594	Hyogo
34	Hiroshima	56	42	63		64		26	32	46	33	40	51	41	38	33	27	37	49	28	23	20	21	21	791	Hiroshima
1	Hokkaido	81	77	85		76		67	45	74	85	67	62	55	59	52	46	31	40	44	46	50	40	20	1,202	Hokkaido
39	Kochi	15	41	47		19		42	30	37	31	42	30	23	25	24	29	23	14	15	16	11	20	20	554	Kochi
20	Nagano	45	31	50		52		27	40	39	28	41	47	42	38	30	31	31	26	17	20	25	20	19	699	Nagano
21	Gifu	32	28	50		61		46	23	36	45	62	48	27	31	18	16	25	22	19	16	18	15	17	655	Gifu
32	Shimane	64	62	49		43		34	33	30	37	44	49	56	28	25	39	31	20	22	10	20	19	16	731	Shimane
38	Ehime	20	22	23		15		10	15	12	8	10	52	60	32	27	17	3	18	19	14	20	19	16	432	Ehime
24	Mie	83	69	64		50		43	30	26	25	48	29	28	24	15	16	12	15	10	10	5	18	13	633	Mie
44	Oita	21	28	23		29		5	14	5	12	11	12	12	9	14	1	7	7	3	8	8	3	13	245	Oita
40	Fukuoka	17	38	44		39		35	19	32	24	26	32	23	21	13	10	9	14	7	7	8	11	12	441	Fukuoka

35	Yamaguchi	45	46	48		59		59	29	34	41	50	31	51	30	20	19	23	20	16	21	18	10	11	681	Yamaguchi
7	Fukushima	13	29	14		24		14	8	16	11	10	7	8	9	10	10	9	16	4	12	10	11	11	256	Fukushima
14	Kanagawa	16	12	10		9		7	10	7	18	18	17	12	11	12	7	8	12	8	12	7	13	11	237	Kanagawa
45	Miyazaki	23	29	29		39		16	14	19	10	27	19	20	16	18	22	24	16	16	16	16	21	10	420	Miyazaki
17	Ishikawa	31	33	31		24		29	15	21	27	29	25	14	20	21	12	21	6	7	14	8	8	10	406	Ishikawa
22	Shizuoka	19	16	20		10		13	12	7	12	3	6	20	14	6	13	11	9	7	10	5	8	10	231	Shizuoka
46	Kagoshima	14	26	17		38		21	23	35	28	28	19	16	11	15	12	9	15	19	7	14	7	8	382	Kagoshima
3	Iwate	21	36	25		21		13	17	15	16	26	15	10	11	10	12	11	4	10	9	12	18	8	320	Iwate
2	Aomori	32	10	14		6		5	9	16	13	17	18	11	7	8	4	7	10	9	8	6	6	8	224	Aomori
43	Kumamoto	30	26	24		9		9	9	10	12	8	11	15	3	9	4	10	5	6	6	7	2	8	223	Kumamoto
26	Kyoto	23	22	46		22		19	19	27	22	28	19	19	17	19	17	13	12	11	11	6	8	7	387	Kyoto
15	Niigata	20	17	12		21		13	14	9	8	9	5	10	7	9	12	7	6	8	13	9	9	7	225	Niigata
33	Okayama	80	35	32		29		32	28	25	19	42	48	31	25	16	13	12	12	8	7	8	7	6	515	Okayama
25	Shiga	27	25	22		16		15	17	7	14	29	36	21	19	16	10	7	3	7	12	3	2	6	314	Shiga
23	Aichi	18	9	24		23		13	12	16	17	16	20	19	9	15	14	7	4	6	5	5	5	6	263	Aichi
36	Tokushima	17	22	29		24		10	20	16	14	7	13	14	13	7	9	8	6	8	6	1	3	6	253	Tokushima
18	Fukui	25	23	36		26		14	13	2	6	5	4	17		4	6	7	3	9	3	3	3	6	215	Fukui
5	Akita	29	20	17		17		11	6	14	9	7	16	7	11	7	12	8	4	5	1	3	3	6	213	Akita
31	Tottori	21	40	31		22		12	12	13	15	15	23	11	17	13	12	7	7	8	1	4	14	5	303	Tottori
41	Saga	6	7	5		6		5	7	3	5	2	1	1					2	2	1		2	5	60	Saga
10	Gunma	19	17	24		28		12	14	15	12	18	15	14	13	7	4	14	8	6	6	3	9	4	262	Gunma
19	Yamanashi	18	26	28		19		10	15	12	8	20	12	20	11	9	10	9	12	5	3	5	6	4	262	Yamanashi
4	Miyagi	8	20	10		11		12	11	11	12	15	7	5	7	13	8	10	12	11	6	7	7	4	207	Miyagi
42	Nagasaki	20	8	12		20		9	7	14	11	9	8	8	8	7	3	8	6	7	12	8	7	4	196	Nagasaki

12	Chiba	9	8	6		2		10	3	1	6	8	4	5	6	2	2	1	1	1	1	1	1	1	1	4	82	Chiba
29	Nara	48	58	39		42		31	35	19	23	18	11	5	10	9	11	10	5	5	13	4	8	3	407	Nara		
37	Kagawa	18	17	13		28		17	15	22	9	11	12	27	12	6	12	17	13	7	11	11	9	3	290	Kagawa		
6	Yamagata	7	6	7		9		10	11	9	11	8	6	9	7	10	8	5	6	2	6	5	4	3	149	Yamagata		
27	Osaka	10	6	14		31		7	4	9	4	11	5	10	2	3	2	2	2	1	3	3	2	3	134	Osaka		
9	Tochigi	5	7	13		10		4	4	11	7	7	8	9	4	10	9	3	2	3	5	2	6	3	132	Tochigi		
8	Ibaraki	4	2	6		3		2	3	3	4	4	6	5	1	4	3	12	6	5	7	8	7	3	98	Ibaraki		
13	Tokyo	21	27	26		11		17	18	14	10	10	22	15	18	12	2	13	8	4	7	6	1	1	263	Tokyo		
16	Toyama	17	15	12		19		13	15	9	14	13	16	7	8	1	4	2	1	1	2	1	6		176	Toyama		
11	Saitama	7	15	16		7		8	6	3	6	5	11	6	4	3	5	2	2	7	1	1			115	Saitama		
47	Okinawa	7	2	4		4		7	2	1	4	4	8			1	2	2	2		1		1		52	Okinawa		
	total	1,217	1,214	1,274		1,233		916	785	884	859	997	968	884	718	635	565	565	512	457	444	432	451	408	16,418	total		

Data source : <https://anzeninfo.mhlw.go.jp/user/anzen/tok/anst00.htm>

Return to https://www.jisha.or.jp/english/statistics/202211_23.html