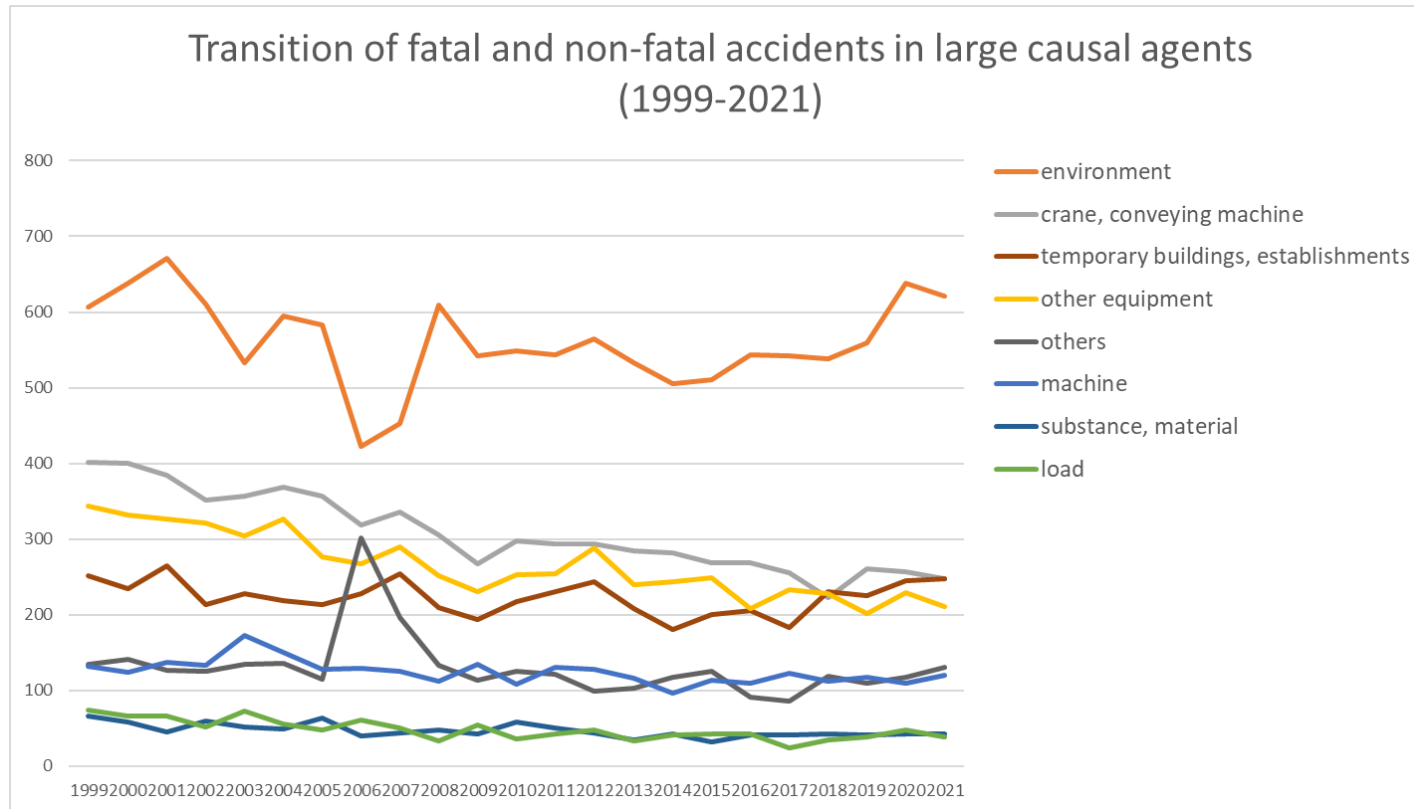
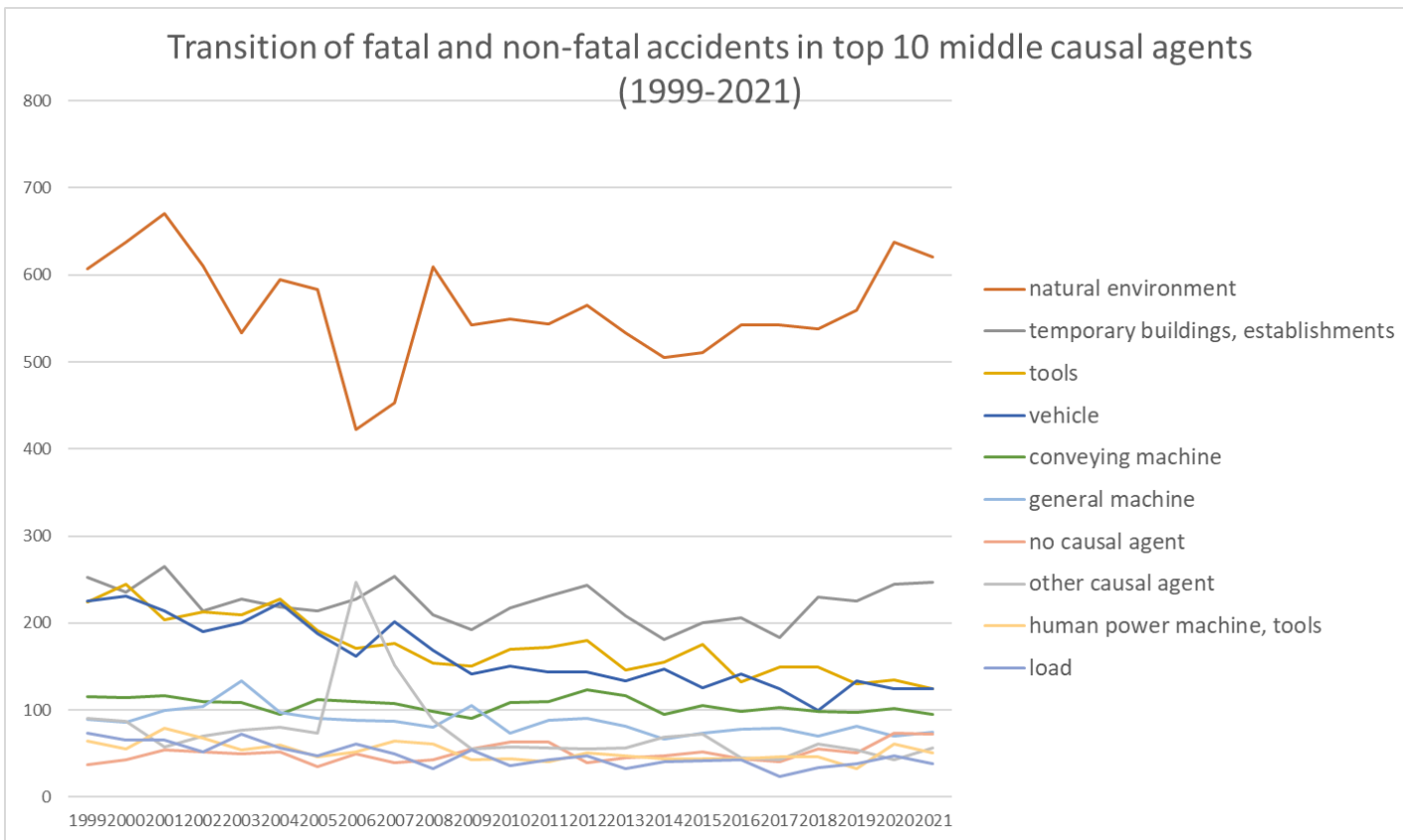


Transition of fatal and non-fatal accidents in each element like as causal agents, type of accidents, etc. in code no. 07 livestock/fishery (1999-2021)

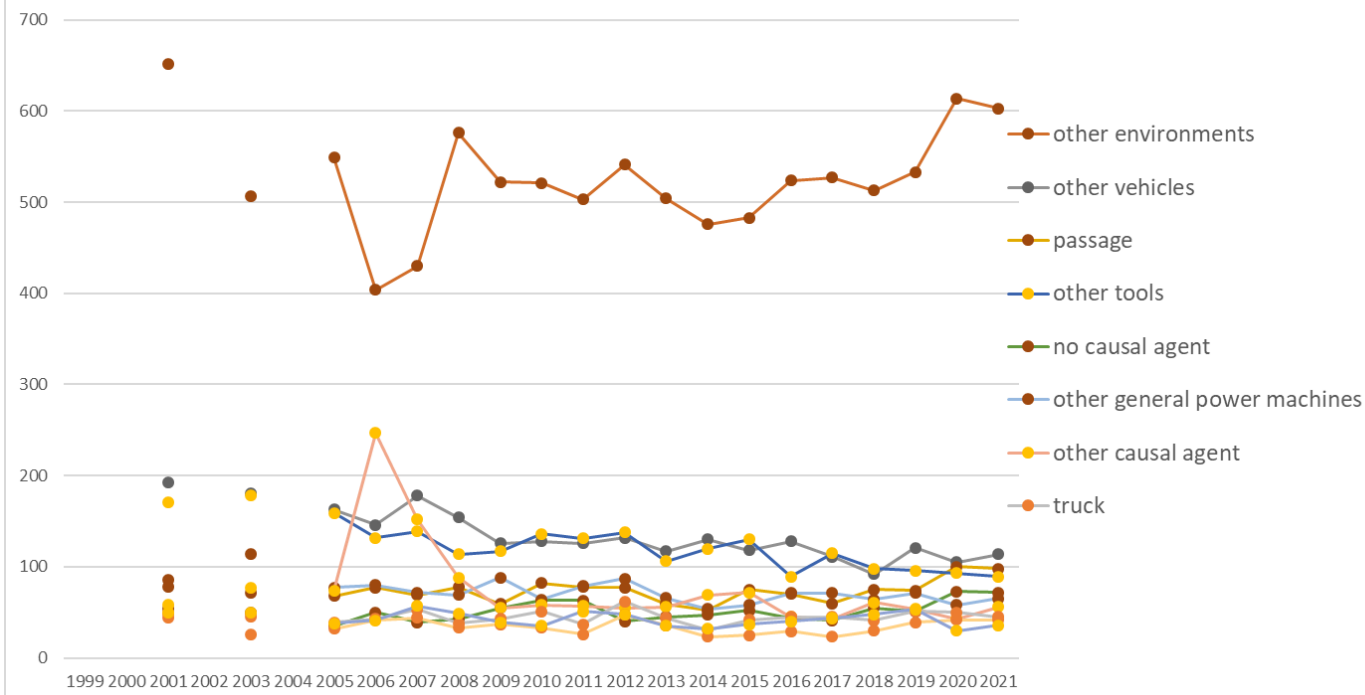


Transition of fatal and non-fatal accidents in large causal agents in code no. 07 livestock/fishery (1999-2021)



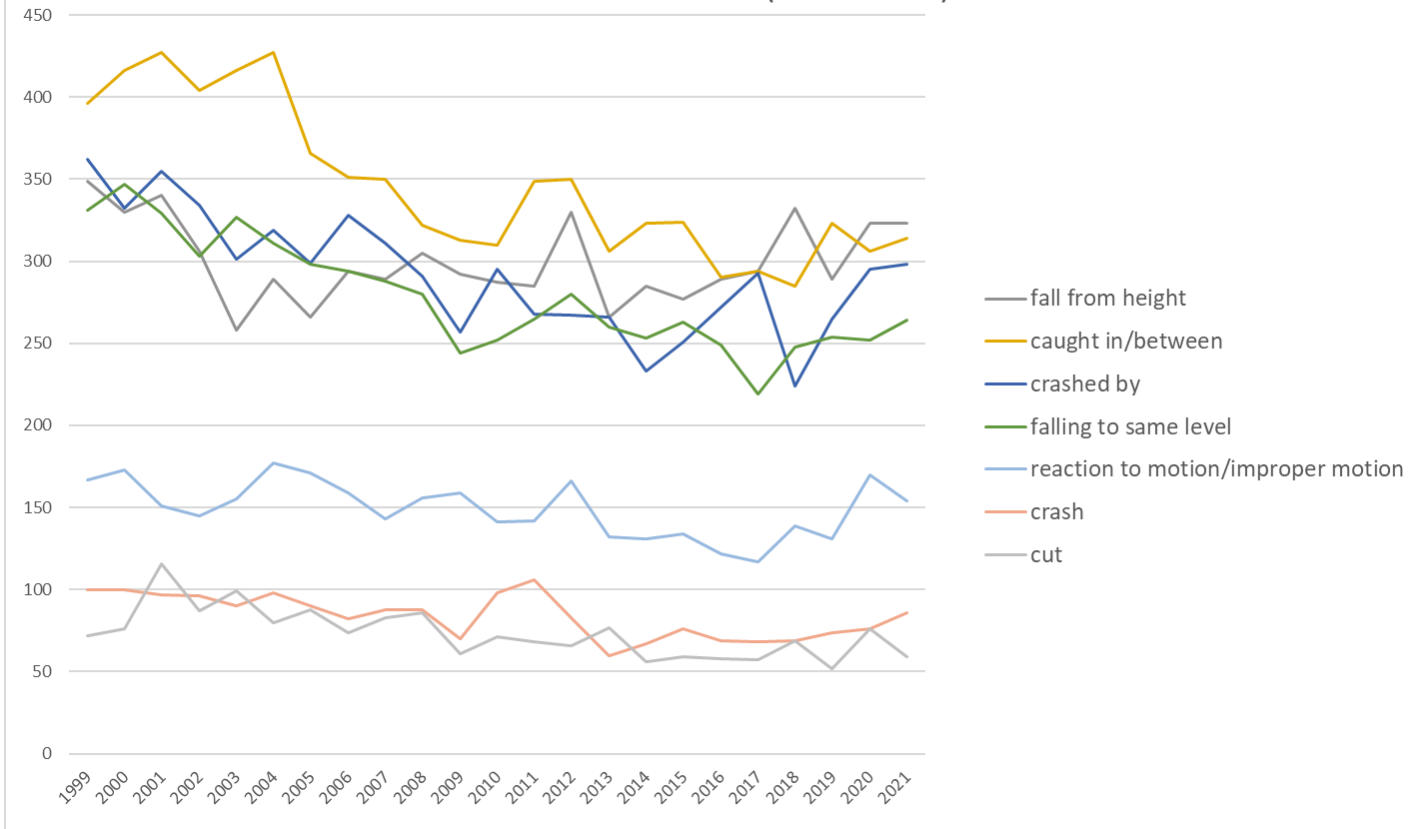
Transition of fatal and non-fatal accidents in middle causal agents in code no. 07 livestock/fishery (1999-2021)

Transition of fatal and non-fatal accidents in top 10 small causal agents (1999-2021)



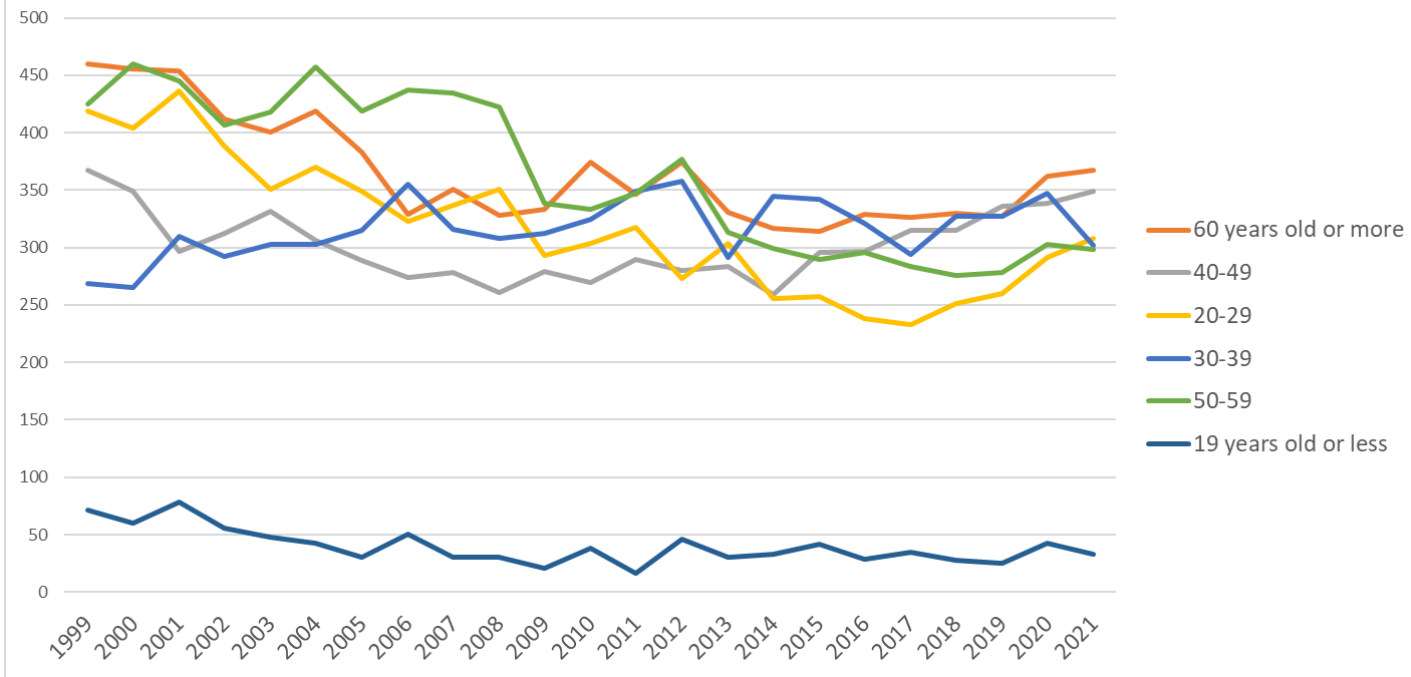
Transition of fatal and non-fatal accidents in small causal agents in code no. 07 livestock/fishery (1999-2021)

Transition of fatal and non-fatal accidents in top 7 type of accidents
(1999-2021)



Transition of fatal and non-fatal accidents in type of accidents in code no. 07 livestock/fishery (1999-2021)

Transition of fatal and non-fatal accidents in workers ages (1999-2021)



Transition of fatal and non-fatal accidents in workers ages in code no. 07 livestock/fishery (1999-2021)

46	Kagoshima	93	81	102		92		109	96	87	103	87	95	92	98	97	85	97	84	104	94	101	101	112	2,010	Kagoshima
25	Shiga	98	119	98		85		100	98	103	102	83	84	76	113	89	96	103	92	109	95	91	98	100	2,032	Shiga
3	Iwate	70	80	70		60		43	59	74	41	59	41	70	77	57	54	61	42	48	60	76	76	70	1,288	Iwate
22	Shizuoka	65	59	40		59		37	42	44	34	35	47	43	40	34	39	49	38	32	29	34	26	45	871	Shizuoka
42	Nagasaki	69	50	58		65		46	55	51	51	32	55	41	37	38	43	30	34	43	34	41	43	44	960	Nagasaki
45	Miyazaki	57	37	51		48		63	60	68	59	68	50	65	50	43	38	45	56	55	58	50	50	39	1,110	Miyazaki
34	Hiroshima	50	44	30		43		43	44	47	30	34	31	39	40	40	43	33	35	32	45	40	43	39	825	Hiroshima
43	Kumamoto	45	44	38		26		29	34	41	36	28	30	29	31	25	28	35	32	17	35	31	43	39	696	Kumamoto
9	Tochigi	28	18	21		23		19	18	18	23	12	19	24	22	30	25	21	25	36	24	33	29	37	505	Tochigi
28	Hyogo	22	19	24		22		24	13	25	16	18	19	12	25	16	16	12	16	13	13	18	35	37	415	Hyogo
10	Gunma	16	17	23		10		25	23	13	23	21	20	26	15	21	16	13	21	22	30	25	35	32	447	Gunma
2	Aomori	53	45	44		38		40	31	25	38	31	25	35	31	33	32	22	23	28	23	29	35	31	692	Aomori
15	Niigata	35	45	25		28		27	26	37	35	29	34	19	24	21	31	18	24	21	36	31	40	31	617	Niigata
33	Okayama	12	26	20		25		17	14	19	24	18	15	17	16	22	13	18	10	20	21	19	23	30	399	Okayama
24	Mie	60	71	70		65		49	34	46	44	28	34	49	40	31	34	25	23	25	33	25	32	29	847	Mie
14	Kanagawa	7	4	7		14		14	10	13	17	22	22	15	14	10	19	16	10	11	13	22	15	28	303	Kanagawa
12	Chiba	40	52	49		58		61	61	50	59	55	53	64	63	37	29	29	36	26	36	33	31	25	947	Chiba
44	Oita	28	27	34		30		41	27	20	25	18	27	23	23	26	18	20	16	28	27	18	22	24	522	Oita
40	Fukuoka	16	12	13		18		13	15	17	8	16	15	9	14	15	16	10	20	12	13	12	10	24	298	Fukuoka
38	Ehime	51	38	42		50		42	34	32	16	23	29	29	29	19	23	22	28	16	17	15	21	23	599	Ehime
4	Miyagi	24	26	25		32		26	22	18	22	19	17	20	17	18	24	30	21	17	19	26	25	22	470	Miyagi
23	Aichi	22	18	15		23		20	17	18	14	19	22	31	13	15	22	21	19	24	19	26	29	22	429	Aichi
32	Shimane	18	27	21		28		16	13	15	17	22	21	18	15	12	16	20	18	10	14	21	11	20	373	Shimane
7	Fukushima	11	50	36		34		30	32	34	40	20	25	27	14	11	20	19	15	10	12	24	18	19	501	Fukushima
39	Kochi	31	36	29		23		28	29	35	29	14	26	37	20	28	16	15	19	28	28	19	20	18	528	Kochi

21	Gifu	13	8	17		13		2	6	10	7	14	8	9	7	9	11	10	15	10	13	12	9	18	221	Gifu
41	Saga	19	18	22		15		19	29	11	22	17	15	16	20	20	16	22	18	22	15	10	30	17	393	Saga
17	Ishikawa	36	40	37		30		27	24	19	18	23	24	15	15	19	16	13	16	14	13	20	17	15	451	Ishikawa
6	Yamagata	14	8	7		6		16	12	12	4	10	11	9	14	15	4	12	11	4	11	7	10	15	212	Yamagata
26	Kyoto	8	14	16		18		14	18	23	17	18	19	20	22	15	13	13	16	16	17	7	10	14	328	Kyoto
5	Akita	13	12	8		15		5	11	7	6	7	8	6	3	15	11	5	10	8	4	12	7	13	186	Akita
35	Yamaguchi	21	24	8		12		13	16	15	11	5	10	9	15	13	12	9	8	10	14	8	5	11	249	Yamaguchi
16	Toyama	37	28	34		29		22	26	26	28	21	22	21	22	19	16	13	12	19	12	14	13	10	444	Toyama
30	Wakayama	13	20	22		33		26	33	19	24	18	28	23	23	15	19	25	22	9	15	10	6	10	413	Wakayama
11	Saitama	13	16	13		6		8	6	10	5	14	17	10	10	13	20	14	14	12	8	6	11	9	235	Saitama
37	Kagawa	15	21	16		26		13	13	18	11	12	9	15	15	15	11	14	13	15	16	5	17	8	298	Kagawa
31	Tottori	14	13	7		6		4	5	5	7	4		3	6	4	8	9	3	4	5	10	5	8	130	Tottori
36	Tokushima	22	14	16		14		8	14	7	18	11	5	8	16	12	5	5	9	12	8	13	9	6	232	Tokushima
47	Okinawa	3	5	5		6		14	7	18	11	6	5	12	9	18	8	12	10	10	11	8	15	5	198	Okinawa
18	Fukui	3		13		5		6	4	6	8	6	7	7	7	4	4	8	8	9	6	5	2	4	122	Fukui
27	Osaka	2	18	11		12		16	11	9	13	12	11	7	11	4	8	10	5	8	7	6	2	3	186	Osaka
13	Tokyo	9	4	4		8		3	2	6	1	2	4	10	2	7	4	1	4	2	3			3	79	Tokyo
20	Nagano	6	5	4		3		6	5	3	6	11	6	10	9	6	7	8	3	7	5	5	8	2	125	Nagano
29	Nara	4	1	3		2		3	2	3	4	2	4	1	7	6	5	4	7	3	1	5	2		69	Nara
19	Yamanashi	1	3	1		1			2	1	3		2	1	2	2		2	2	2	1	2	2		30	Yamanashi
	total	2,011	1,994	2,020		1,853		1,785	1,768	1,747	1,700	1,577	1,644	1,666	1,708	1,553	1,509	1,541	1,510	1,487	1,527	1,553	1,685	1,657	35,495	total

Data source : <https://anzeninfo.mhlw.go.jp/user/anzen/tok/anst00.htm>

Return to https://www.jisha.or.jp/english/statistics/202211_23.html