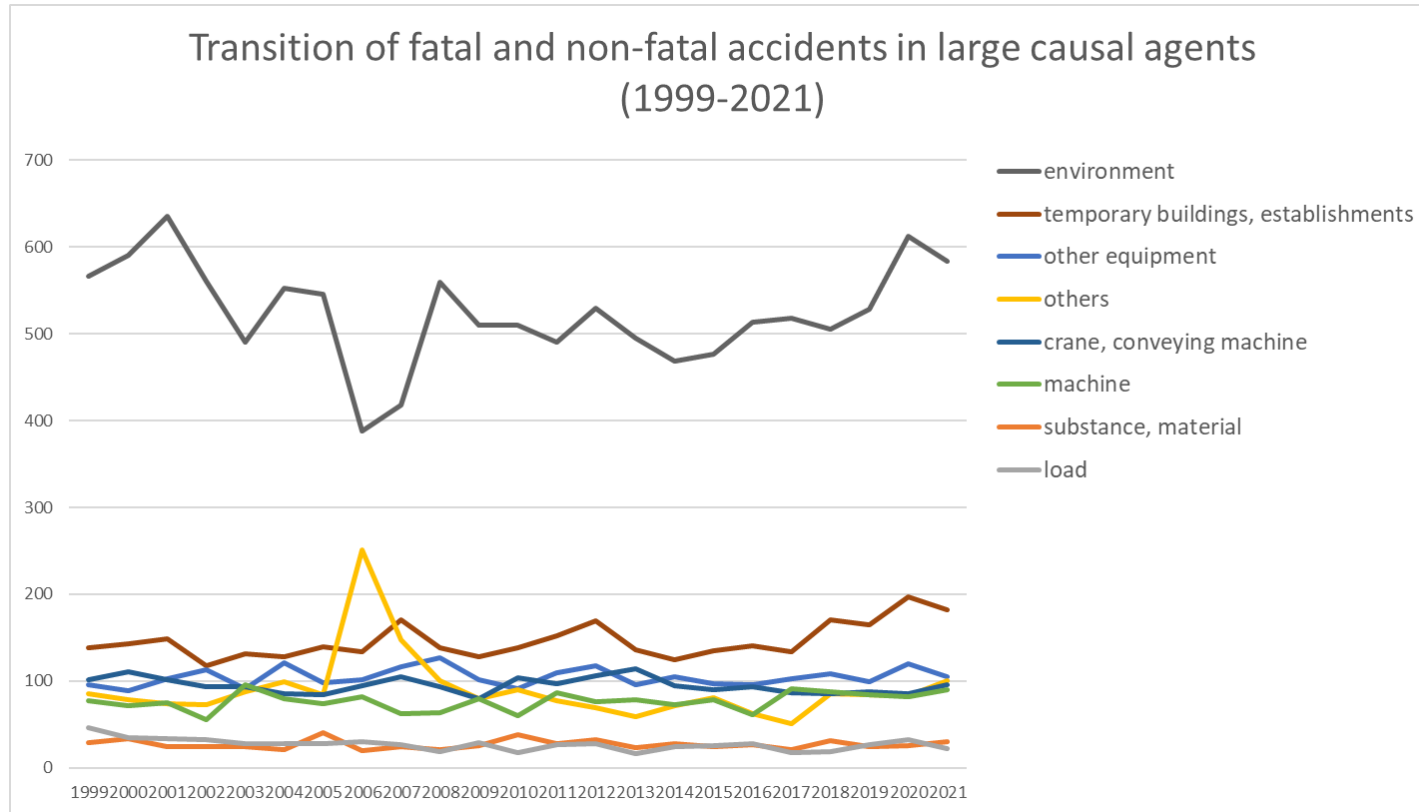
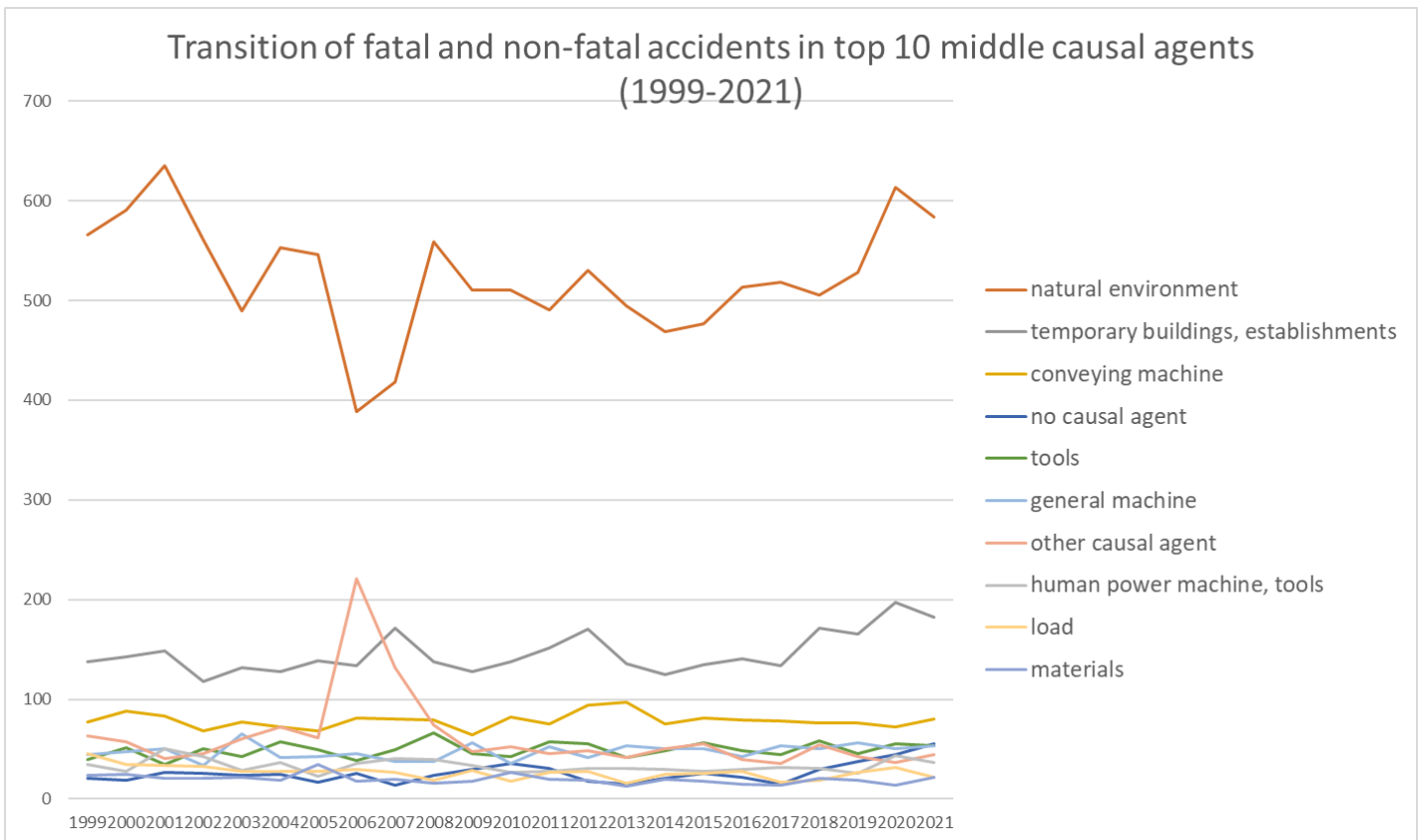


Transition of fatal and non-fatal accidents in each element like as causal agents, type of accidents, etc. in code no. 070101 livestock (1999-2021)

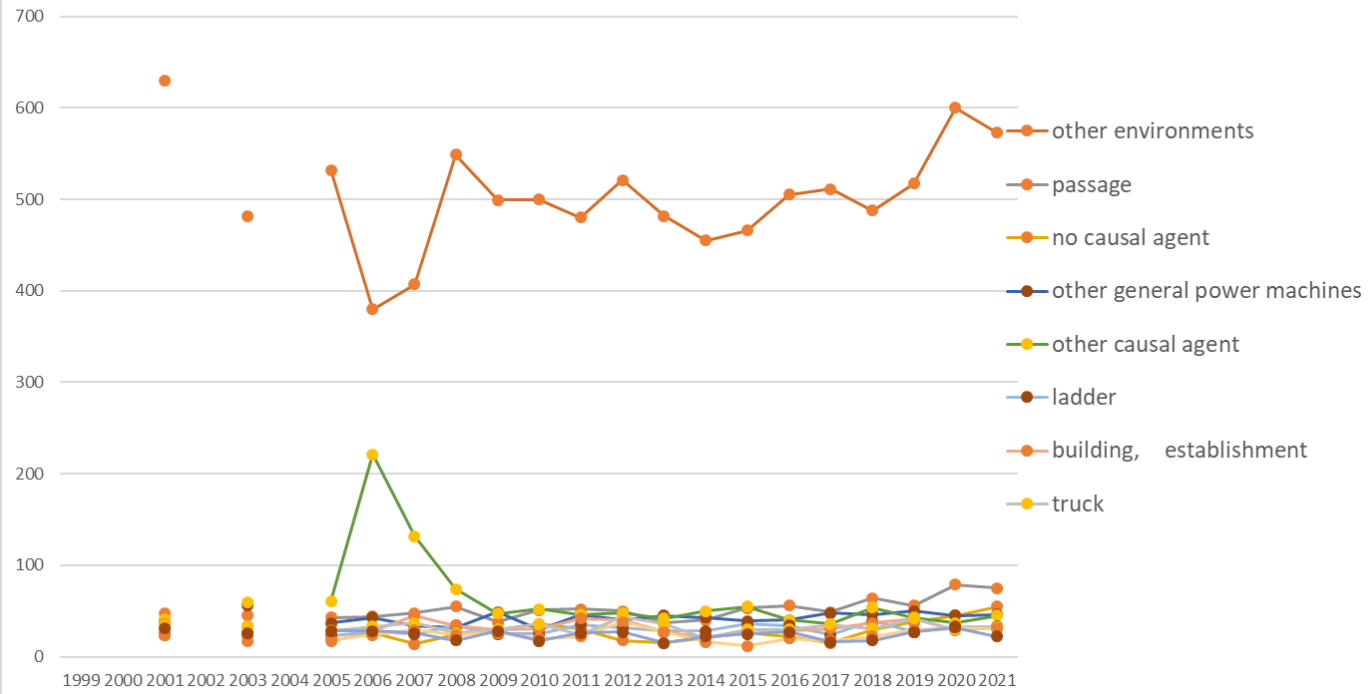


Transition of fatal and non-fatal accidents in large causal agents in code no. 070101 livestock (1999-2021)



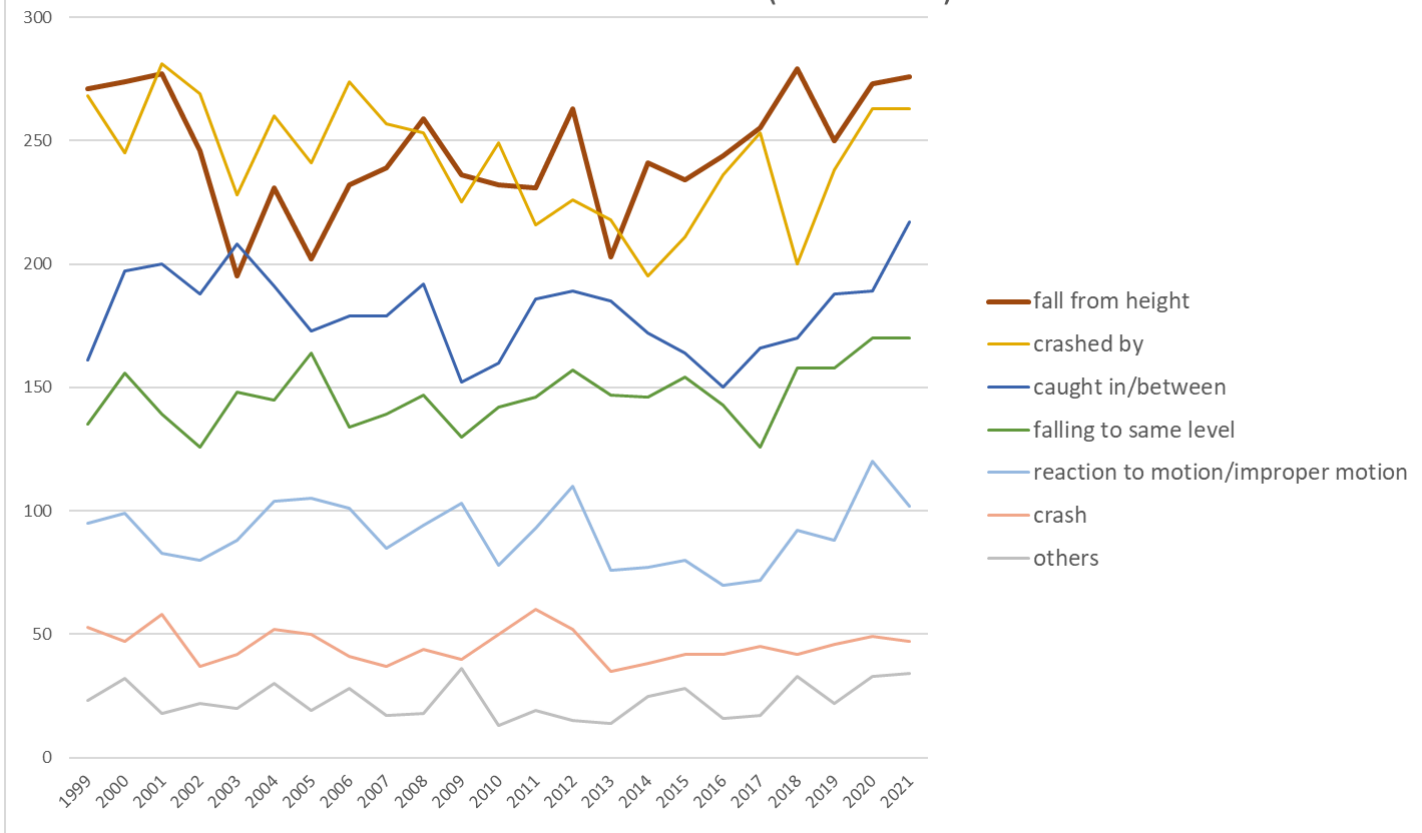
Transition of fatal and non-fatal accidents in middle causal agents in code no. 070101 livestock (1999-2021)

Transition of fatal and non-fatal accidents in top 10 small causal agents (1999-2021)



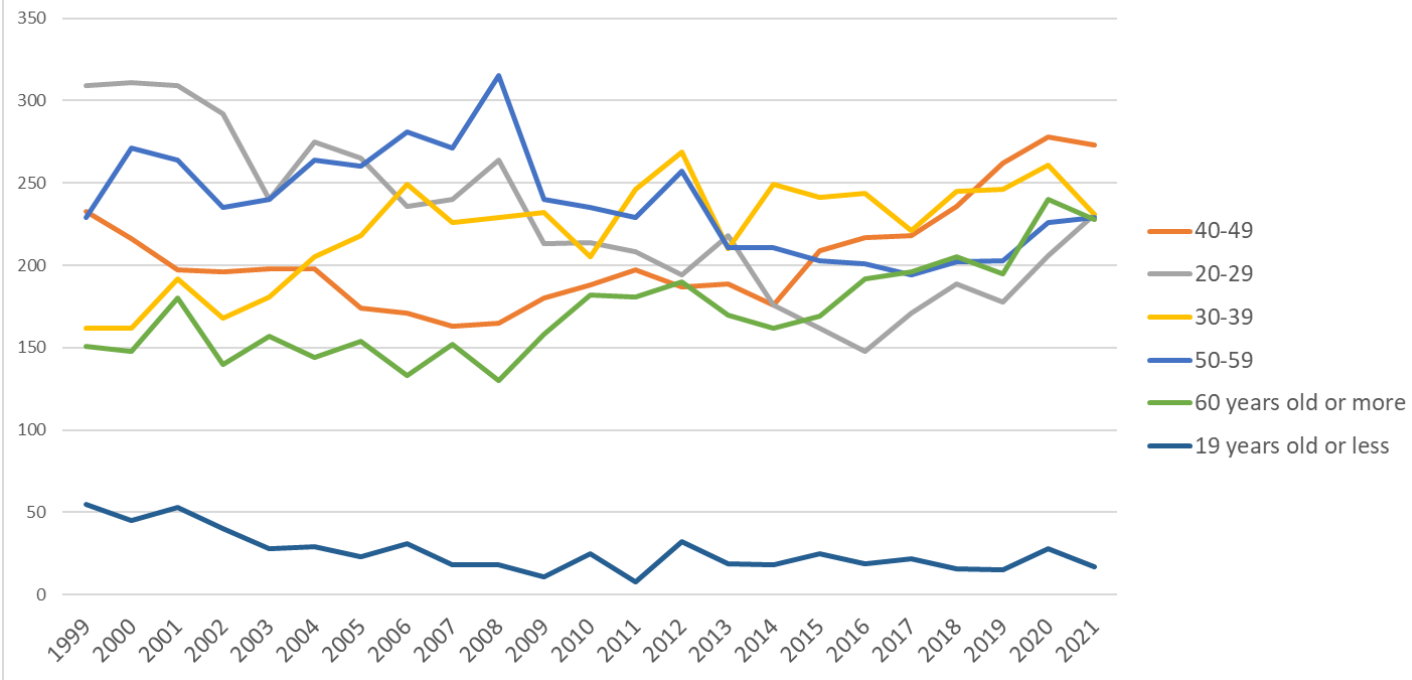
Transition of fatal and non-fatal accidents in small causal agents in code no. 070101 livestock (1999-2021)

Transition of fatal and non-fatal accidents in top 7 type of accidents
(1999-2021)



Transition of fatal and non-fatal accidents in type of accidents in code no. 070101 livestock (1999-2021)

Transition of fatal and non-fatal accidents in workers ages (1999-2021)



Transition of fatal and non-fatal accidents in workers ages in code no. 070101 livestock (1999-2021)

8	Ibaraki	170	168	181		134		162	153	130	149	117	129	115	141	124	114	150	115	116	130	134	141	137	2,910	Ibaraki
25	Shiga	96	118	96		85		99	97	103	102	83	84	74	112	89	95	103	90	109	92	90	98	98	2,013	Shiga
46	Kagoshima	63	52	60		61		69	70	60	72	61	68	60	66	65	60	71	63	80	66	65	72	75	1,379	Kagoshima
3	Iwate	45	55	43		30		23	37	44	28	34	22	48	54	42	40	42	30	33	51	65	65	61	892	Iwate
9	Tochigi	27	16	21		22		18	17	18	23	12	19	24	22	30	24	21	25	36	24	33	28	36	496	Tochigi
28	Hyogo	17	14	20		9		17	8	21	16	13	16	9	20	12	13	9	12	11	8	16	31	35	327	Hyogo
45	Miyazaki	40	24	39		40		50	53	52	47	59	44	56	39	35	36	31	52	51	51	40	43	32	914	Miyazaki
10	Gunma	15	17	23		10		25	23	13	23	21	19	26	15	21	16	13	21	22	30	25	35	32	445	Gunma
43	Kumamoto	23	23	18		17		24	25	28	29	24	20	20	24	17	23	24	21	12	31	25	32	31	491	Kumamoto
33	Okayama	12	24	19		24		14	11	15	21	16	12	16	14	21	11	15	10	20	21	18	22	27	363	Okayama
15	Niigata	15	25	14		13		15	13	27	20	17	20	13	14	15	21	12	15	15	23	19	33	24	383	Niigata
40	Fukuoka	14	10	12		17		12	14	17	8	16	14	9	14	14	15	9	20	8	13	10	9	24	279	Fukuoka
14	Kanagawa	3	1	3		6		9	6	6	13	15	13	9	11	8	12	9	9	7	10	16	11	22	199	Kanagawa
34	Hiroshima	20	19	10		18		25	20	15	20	16	20	23	25	21	15	18	15	10	20	19	18	21	388	Hiroshima
2	Aomori	33	32	35		30		30	24	16	23	21	18	22	19	24	19	13	15	18	16	21	27	20	476	Aomori
12	Chiba	14	27	32		38		51	43	38	49	46	38	53	54	30	24	22	32	16	27	20	25	19	698	Chiba
7	Fukushima	7	43	34		30		29	32	33	36	20	23	23	13	10	18	19	14	10	12	23	17	19	465	Fukushima
44	Oita	12	16	14		15		22	16	9	13	13	16	15	17	17	13	10	7	20	18	10	13	19	305	Oita
22	Shizuoka	14	4	1		10		4	7	7	11	9	5	11	15	9	10	16	10	10	13	10	11	18	205	Shizuoka
24	Mie	15	18	21		16		15	12	17	13	13	15	20	29	9	17	11	13	16	12	13	20	17	332	Mie
23	Aichi	13	11	11		16		15	14	14	11	15	17	25	6	9	12	12	15	20	17	21	23	16	313	Aichi
21	Gifu	12	7	17		13		1	4	9	7	12	6	8	7	8	11	9	13	10	12	11	9	15	201	Gifu
6	Yamagata	12	7	7		5		13	10	8	2	9	9	7	12	12	3	10	9	4	8	6	8	14	175	Yamagata
41	Saga	16	17	18		9		16	26	9	16	15	12	11	17	16	12	19	14	16	11	6	19	12	307	Saga
32	Shimane	8	9	9		11		8	4	6	8	10	6	6	6	2	8	12	11	5	6	11	8	11	165	Shimane

42	Nagasaki	7	7	4		9		6	11	6	11	3	9	9	6	6	7	6	8	10	7	9	10	11	162	Nagasaki
5	Akita	9	11	6		11		5	10	7	5	7	5	6	3	13	10	4	8	7	4	11	7	11	160	Akita
11	Saitama	13	14	13		6		8	6	10	5	14	17	10	9	13	19	14	14	12	8	6	11	9	231	Saitama
4	Miyagi	11	14	11		11		10	10	4	9	6	10	7	13	15	13	13	10	7	13	16	11	8	222	Miyagi
35	Yamaguchi	9	8	4		7		7	10	9	8	2	5	5	7	7	3	6	5	6	7	6	4	8	133	Yamaguchi
31	Tottori	9	10	3		3		3	3	4	5	2		3	6	3	7	7	3	2	5	10	5	8	101	Tottori
26	Kyoto	4	7	8		5		5	14	9	16	11	12	13	18	11	11	10	11	8	5	4	5	7	194	Kyoto
37	Kagawa	5	7	5		13		8	2	5	5	8	7	9	11	8	6	7	8	10	11	3	12	7	157	Kagawa
38	Ehime	5	9	11		8		14	7	4	2	6	11	7	9	6	3	5	5	9	8	5	8	7	149	Ehime
17	Ishikawa	8	14	13		11		4	6	10	8	12	12	9	6	8	11	4	9	6	6	7	6	5	175	Ishikawa
36	Tokushima	5	5	5		5		1	4	2	5	8	1	6	2	4	2		4	6	7	9	6	5	92	Tokushima
47	Okinawa	3	3	5		4		10	5	16	9	5	5	11	5	17	6	10	6	8	9	7	11	4	159	Okinawa
20	Nagano	5	2	4		3		6	4	3	4	10	6	10	7	6	6	8	3	6	5	4	7	2	111	Nagano
30	Wakayama		2	1		4		4	4	3	4	6	7	5	5	1	5	2	2	2	1	2		2	62	Wakayama
39	Kochi	2	2			1		5	1	2	2	1	3	6	1		2	4	7		2	3	6	2	52	Kochi
16	Toyama	7	1	4		3		4	2	2	3	3	2	2		2		1	2	4	3	2		1	48	Toyama
13	Tokyo	1	1			3				2			1	2		7	3		3	1				1	25	Tokyo
29	Nara	2	1	3		2			2	2	3	1	4	1	7	6	5	4	6	3	1	5	2		60	Nara
19	Yamanashi	1	3	1					1	1	3		2		2	1		1	2	1	1	2	2		24	Yamanashi
27	Osaka		1			2		3	1	1		2	4	1	3		1	1	1						21	Osaka
18	Fukui	1		3		1		2			2			1	2				1	1	1	1			16	Fukui
	total	1,139	1,153	1,195		1,044		1,094	1,101	1,070	1,121	1,034	1,049	1,069	1,129	1,017	992	1,009	1,021	1,022	1,093	1,099	1,239	1,209	22,899	total

Data source : <https://anzeninfo.mhlw.go.jp/user/anzen/tok/anst00.htm>

Return to https://www.jisha.or.jp/english/statistics/202211_23.html