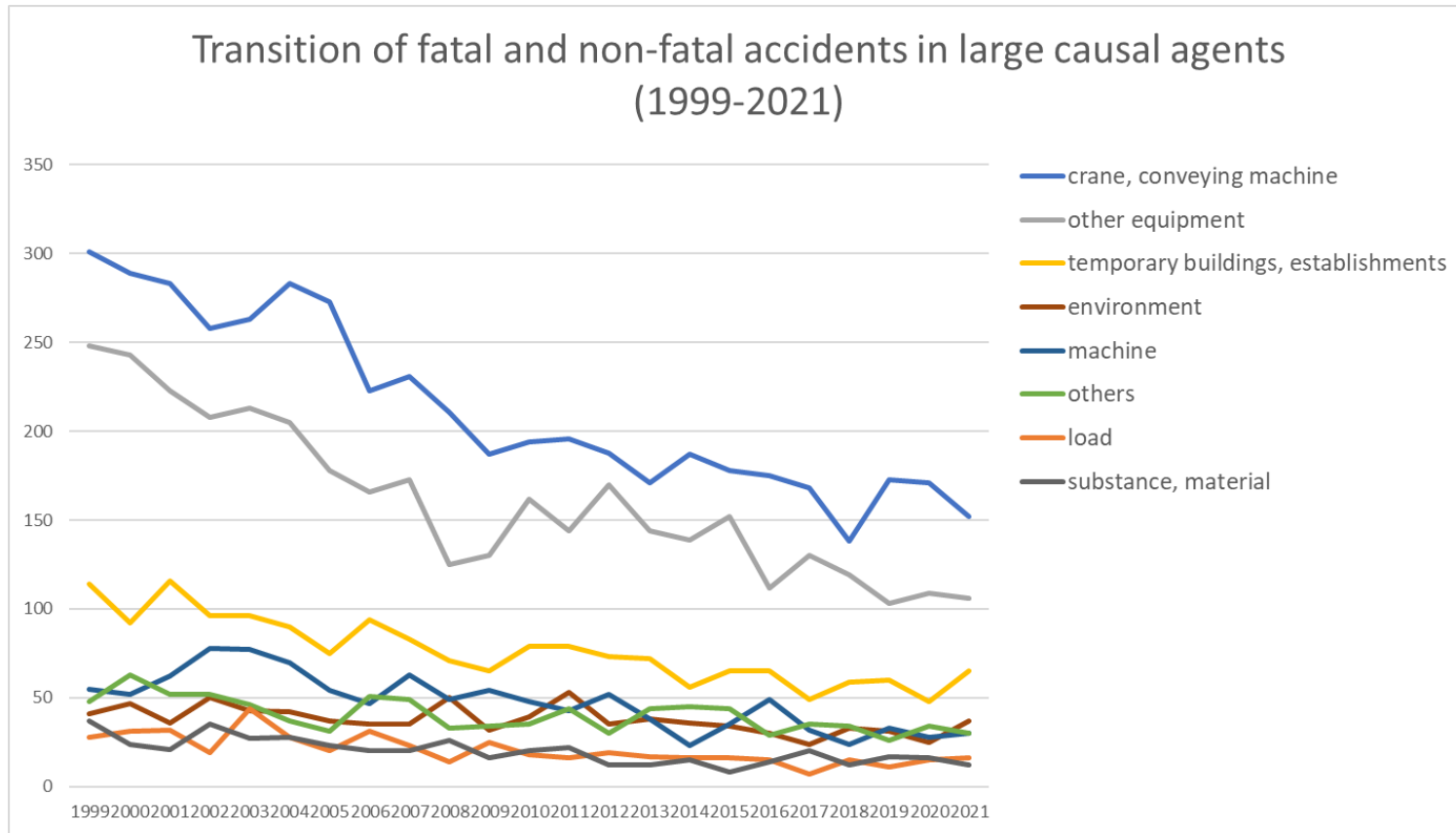
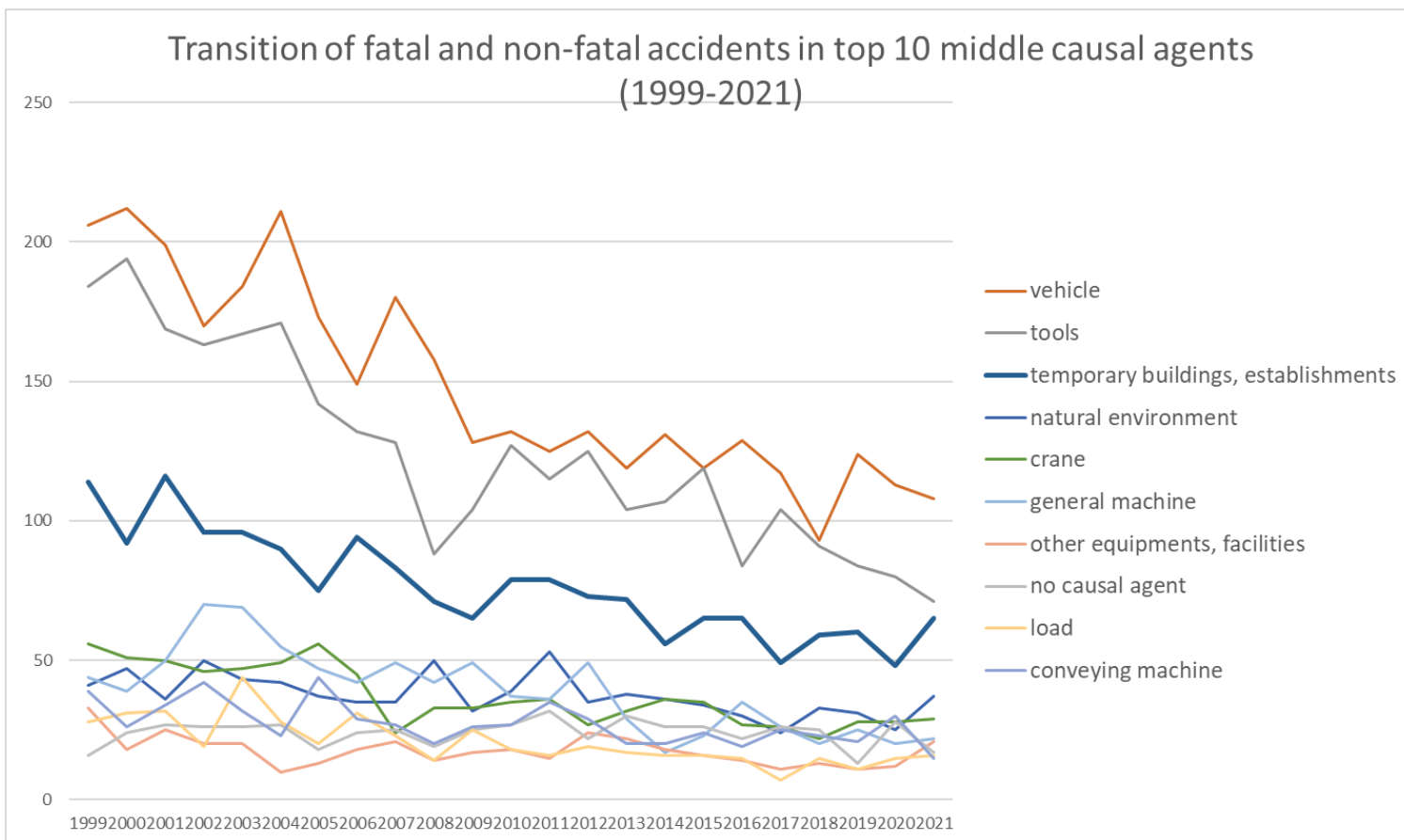


Transition of fatal and non-fatal accidents in each element like as causal agents, type of accidents, etc. in code no. 0702 fishery (1999-2021)

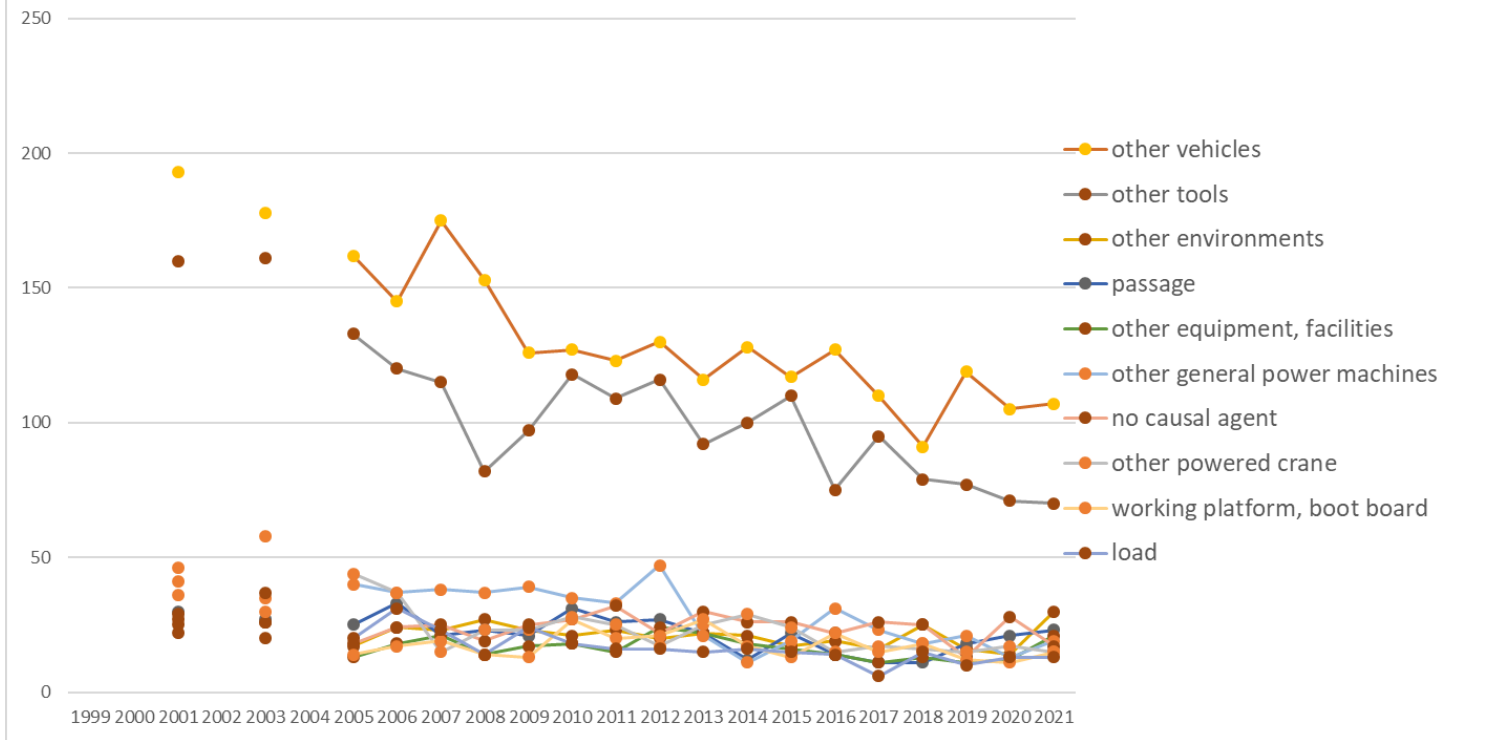


Transition of fatal and non-fatal accidents in large causal agents in code no. 0702 fishery (1999-2021)



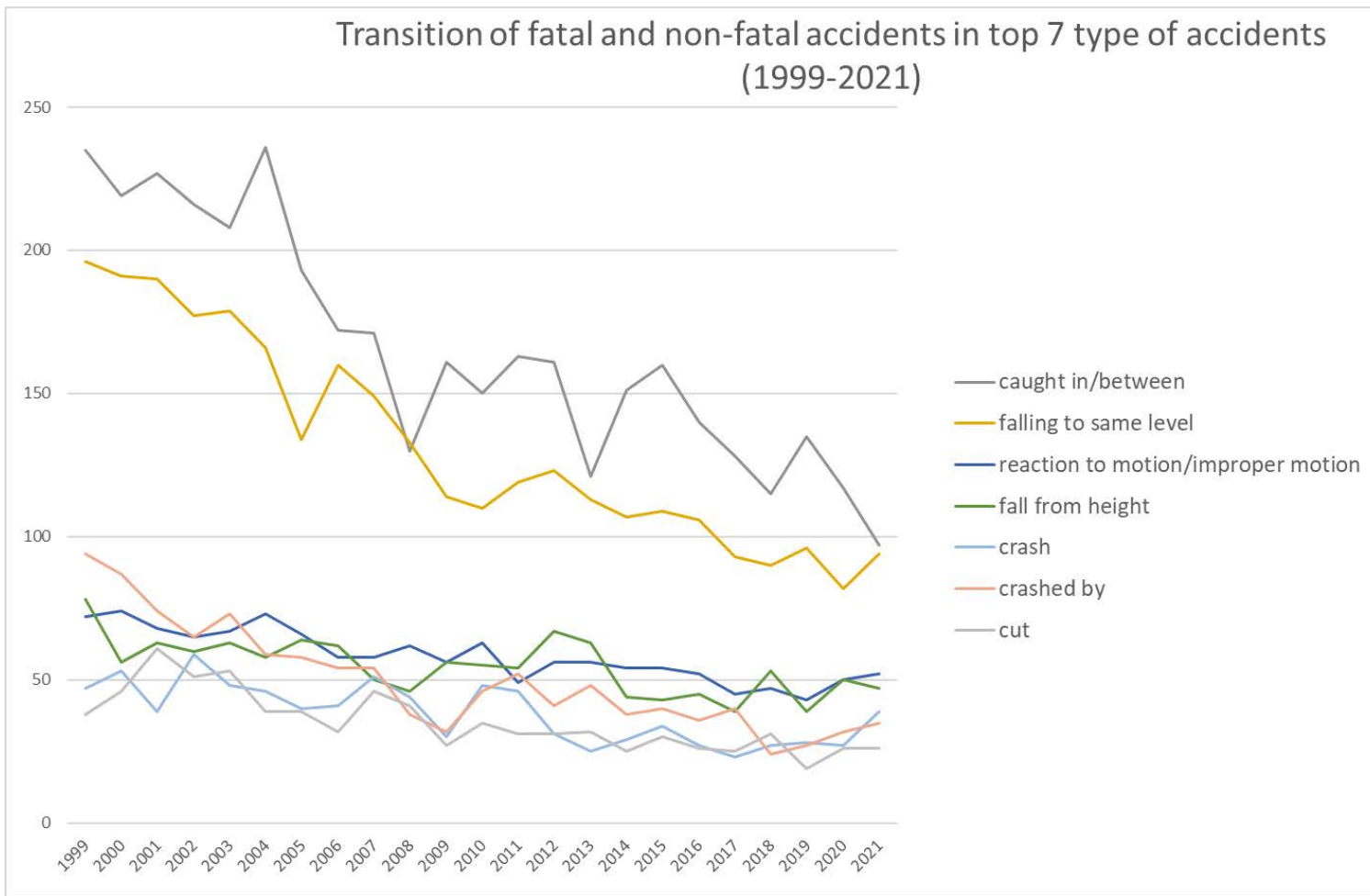
Transition of fatal and non-fatal accidents in middle causal agents in code no. 0702 fishery (1999-2021)

## Transition of fatal and non-fatal accidents in top 10 small causal agents (1999-2021)



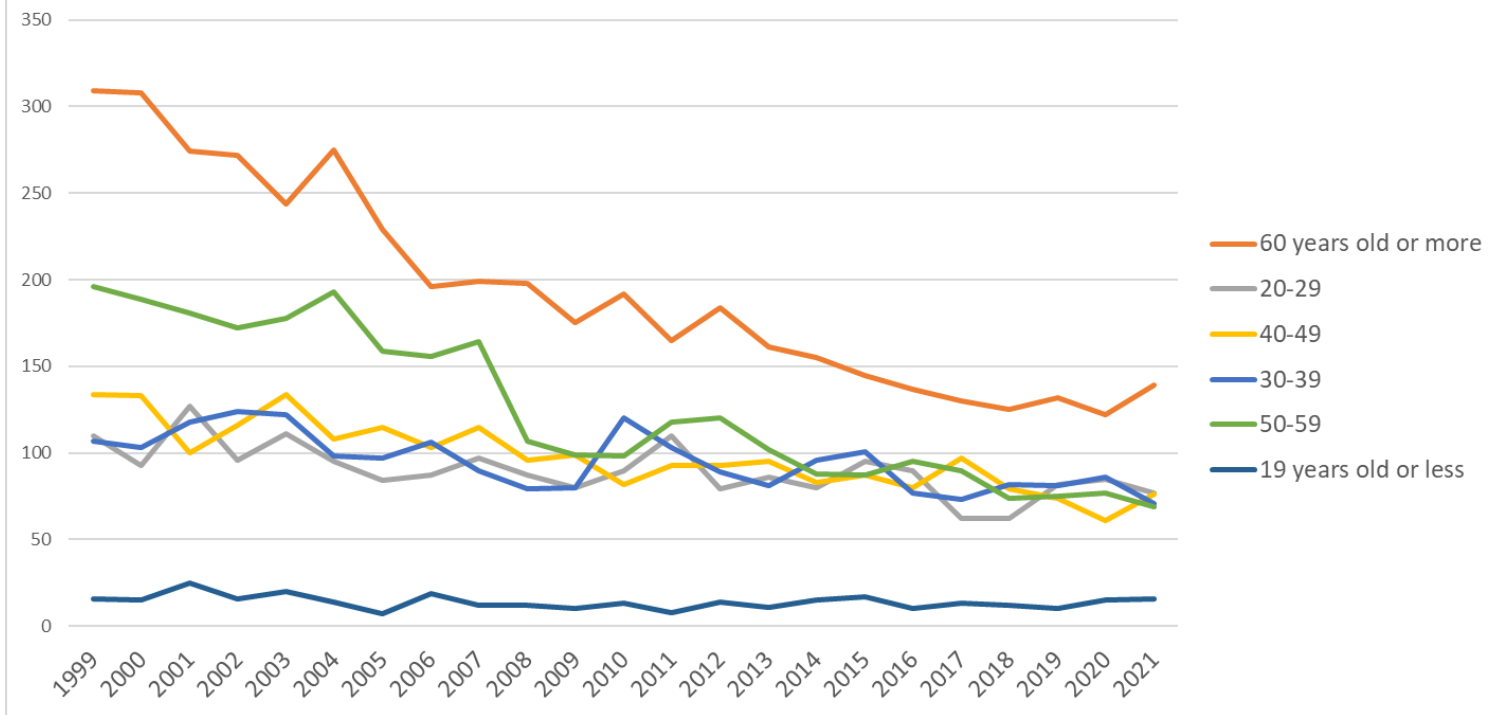
Transition of fatal and non-fatal accidents in small causal agents in code no. 0702 fishery (1999-2021)

Transition of fatal and non-fatal accidents in top 7 type of accidents  
(1999-2021)



Transition of fatal and non-fatal accidents in type of accidents in code no. 0702 fishery (1999-2021)

Transition of fatal and non-fatal accidents in workers ages (1999-2021)



Transition of fatal and non-fatal accidents in workers ages in code no. 0702 fishery (1999-2021)

































6	more	309	308	274	272	244	275	229	196	199	198	175	192	165	184	161	155	145	137	130	125	132	122	139	4,466	more
2	20-29	110	93	127	96	111	95	84	87	97	87	80	90	110	79	86	80	95	90	62	62	82	85	77	2,065	20-29
4	40-49	134	133	100	116	134	108	115	103	115	96	99	82	93	93	95	83	87	80	97	79	74	61	76	2,253	40-49
3	30-39	107	103	118	124	122	98	97	106	90	79	80	120	103	89	81	96	101	77	73	82	81	86	71	2,184	30-39
5	50-59	196	189	181	172	178	193	159	156	164	107	99	98	118	120	102	88	87	95	90	74	75	77	69	2,887	50-59
1	19 years old or less	16	15	25	16	20	14	7	19	12	12	10	13	8	14	11	15	17	10	13	12	10	15	16	320	19 years old or less
	total	872	841	825	796	809	783	691	667	677	579	543	595	597	579	536	517	532	489	465	434	454	446	448	14,175	total

Transition of fatal and non-fatal accidents in workers scales in code no. 0702 fishery (1999-2021)

code	Workers scale	1999	2000	2001	2002	2003	2004	2005	2006	2007	2008	2009	2010	2011	2012	2013	2014	2015	2016	2017	2018	2019	2020	2021	total	Workers scale
1	9 workers or less	421	411	383	385	377	371	365	336	332	285	274	285	299	303	250	254	283	268	239	206	194	202	208	6,931	9 workers or less
2	10-29	281	281	287	291	302	290	218	231	250	210	194	220	198	184	208	182	174	164	166	165	180	163	144	4,983	10-29
4	50-99	83	57	57	60	45	47	35	40	33	36	28	37	35	35	33	45	31	15	22	27	36	33	43	913	50-99
3	30-49	61	73	77	41	60	55	54	51	48	45	40	39	57	49	43	31	35	37	30	29	39	38	30	1,062	30-49
5	100-299	26	19	20	18	24	20	19	9	14	3	7	14	7	8	2	5	9	5	8	7	5	10	23	282	100-299
6	300 workers or more			1	1	1								1											4	300 workers or more
	total	872	841	825	796	809	783	691	667	677	579	543	595	597	579	536	517	532	489	465	434	454	446	448	14,175	total

Transition of fatal and non-fatal accidents in months in code no. 0702 fishery (1999-2021)

code	Month	1999	2000	2001	2002	2003	2004	2005	2006	2007	2008	2009	2010	2011	2012	2013	2014	2015	2016	2017	2018	2019	2020	2021	total	Month
7	July	80	75	84	83	88	81	58	65	71	50	60	44	53	54	33	42	56	41	50	42	41	42	50	1,343	July
4	April	70	74	75	64	80	61	60	50	72	58	34	50	41	46	68	45	50	50	46	43	49	38	48	1,272	April
5	May	101	72	88	78	77	87	79	50	62	49	45	56	64	40	42	50	49	44	39	45	44	38	47	1,346	May

9	September	91	85	78	75	82	77	59	73	54	58	56	52	65	70	52	52	42	54	48	41	39	40	45	1,388	September
8	August	85	71	95	91	71	62	74	75	57	54	60	68	53	50	41	40	39	40	39	47	38	38	42	1,330	August
6	June	74	90	68	57	69	72	67	70	76	51	39	62	57	46	46	57	39	30	32	37	35	43	39	1,256	June
3	March	61	64	67	53	60	70	40	52	53	45	32	42	62	46	44	37	44	41	42	35	25	50	38	1,103	March
10	October	97	76	91	83	72	80	62	79	62	58	56	48	62	71	58	62	52	55	39	39	54	43	34	1,433	October
11	November	77	81	60	61	72	61	67	45	48	35	48	73	39	43	46	54	56	47	43	29	49	34	32	1,200	November
12	December	41	48	46	60	51	51	44	38	57	34	42	38	33	35	29	21	43	28	36	23	30	35	28	891	December
2	February	43	50	27	38	46	39	50	31	35	43	29	28	23	37	30	29	28	33	25	27	25	21	28	765	February
1	January	52	55	46	53	41	42	31	39	30	44	42	34	45	41	47	28	34	26	26	26	25	24	17	848	January
	total	872	841	825	796	809	783	691	667	677	579	543	595	597	579	536	517	532	489	465	434	454	446	448	14,175	total

Transition of fatal and non-fatal accidents in prefectures in code no. 0702 fishery (1999-2021)

code	Prefecture	1999	2000	2001	2002	2003	2004	2005	2006	2007	2008	2009	2010	2011	2012	2013	2014	2015	2016	2017	2018	2019	2020	2021	total	Prefecture
1	Hokkaido	235	224	253		204		207	195	185	166	195	179	185	204	185	166	173	176	147	116	132	144	130	3,801	Hokkaido
46	Kagoshima	30	29	42		31		40	26	27	31	26	27	32	32	32	25	26	21	24	28	36	29	37	631	Kagoshima
42	Nagasaki	62	43	54		56		40	44	45	40	29	46	32	31	32	36	24	26	33	27	32	33	33	798	Nagasaki
22	Shizuoka	51	55	39		49		33	35	37	23	26	42	32	25	25	29	33	28	22	16	24	15	27	666	Shizuoka
34	Hiroshima	30	25	20		25		18	24	32	10	18	11	16	15	19	28	15	20	22	25	21	25	18	437	Hiroshima
39	Kochi	29	34	29		22		23	28	33	27	13	23	31	19	28	14	11	12	28	26	16	14	16	476	Kochi
38	Ehime	46	29	31		42		28	27	28	14	17	18	22	20	13	20	17	23	7	9	10	13	16	450	Ehime
4	Miyagi	13	12	14		21		16	12	14	13	13	7	13	4	3	11	17	11	10	6	10	14	14	248	Miyagi
24	Mie	45	53	49		49		34	22	29	31	15	19	29	11	22	17	14	10	9	21	12	12	12	515	Mie
2	Aomori	20	13	9		8		10	7	9	15	10	7	13	12	9	13	9	8	10	7	8	8	11	216	Aomori
17	Ishikawa	28	26	24		19		23	18	9	10	11	12	6	9	11	5	9	7	8	7	13	11	10	276	Ishikawa



37	Kagawa	10	14	11		13		5	11	13	6	4	2	6	4	7	5	7	5	5	5	2	5	1	141	Kagawa	
36	Tokushima	17	9	11		9		7	10	5	13	3	4	2	14	8	3	5	5	6	1	4	3	1	140	Tokushima	
47	Okinawa		2			2		4	2	2	2	1		1	4	1	2	2	4	2	2	1	4	1	39	Okinawa	
6	Yamagata	2	1			1		3	2	4	2	1	2	2	2	3	1	2	2		3	1	2	1	37	Yamagata	
9	Tochigi	1	2			1		1	1								1							1	1	9	Tochigi
7	Fukushima	4	7	2		4		1		1	4		2	4	1	1	2		1			1	1		36	Fukushima	
31	Tottori	5	3	4		3		1	2	1	2	2				1	1	2		2					29	Tottori	
40	Fukuoka	2	2	1		1		1	1				1			1	1	1		4		2	1		19	Fukuoka	
20	Nagano	1	3						1		2	1			2		1			1		1	1		14	Nagano	
29	Nara	2						3		1	1	1							1						9	Nara	
19	Yamanashi					1			1					1		1		1		1					6	Yamanashi	
11	Saitama		2												1		1								4	Saitama	
10	Gunma	1											1												2	Gunma	
	total	872	841	825		809		691	667	677	579	543	595	597	579	536	517	532	489	465	434	454	446	448	12,596	total	

Data source : <https://anzeninfo.mhlw.go.jp/user/anzen/tok/anst00.htm>

Return to [https://www.jisha.or.jp/english/statistics/202211\\_23.html](https://www.jisha.or.jp/english/statistics/202211_23.html)