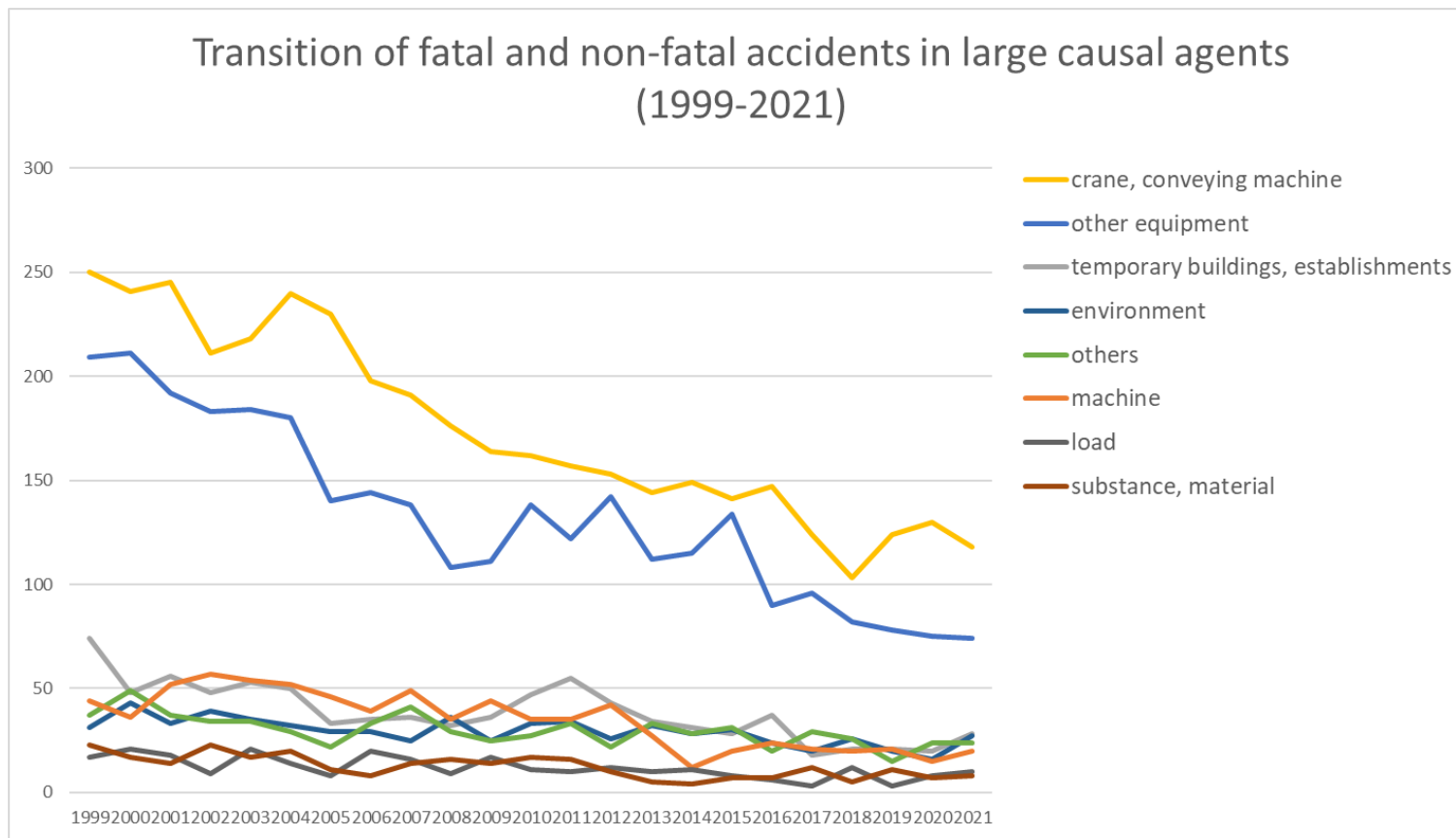
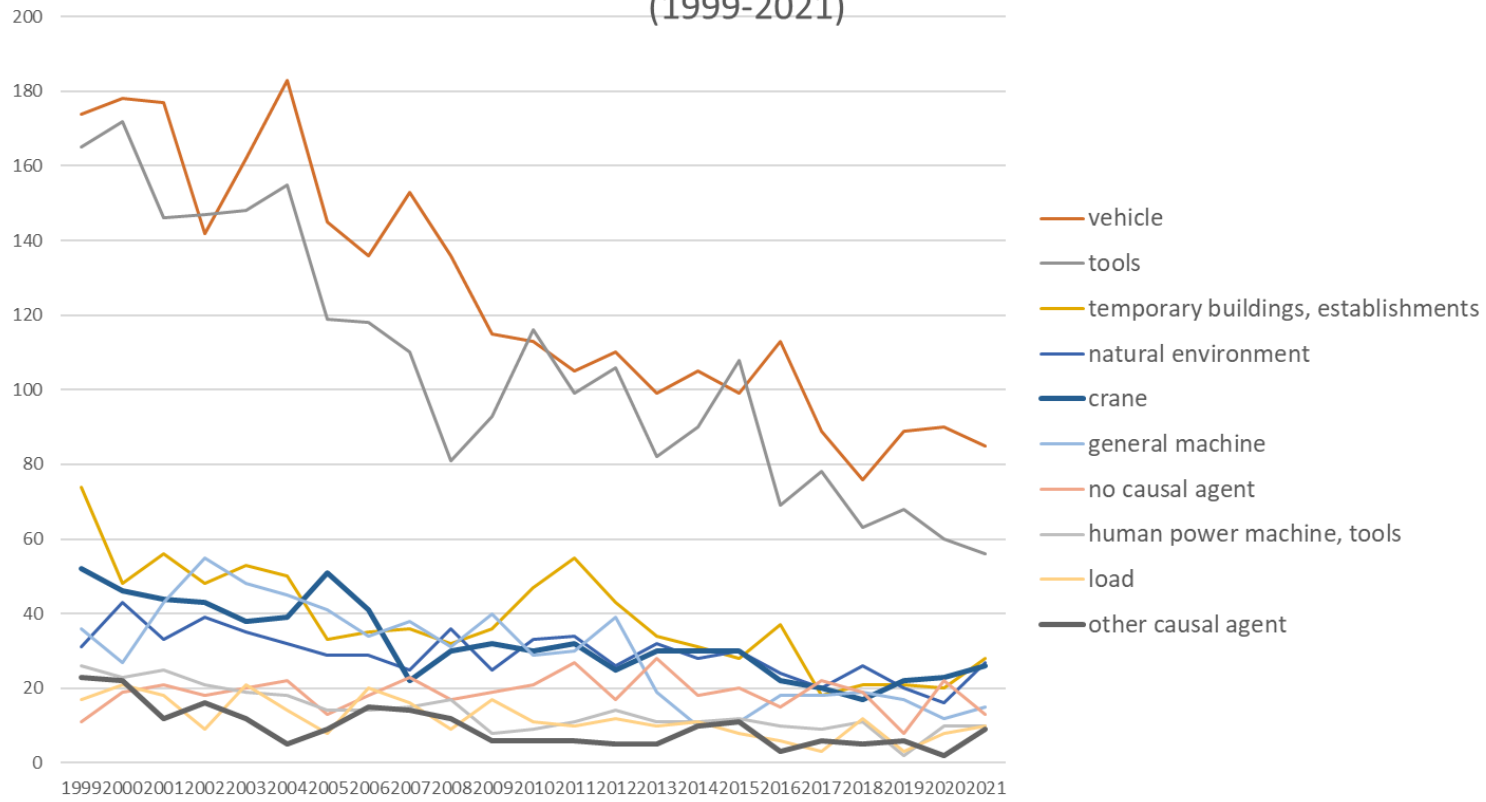


Transition of fatal and non-fatal accidents in each element like as causal agents, type of accidents, etc. in code no. 070201 fishery (1999-2021)



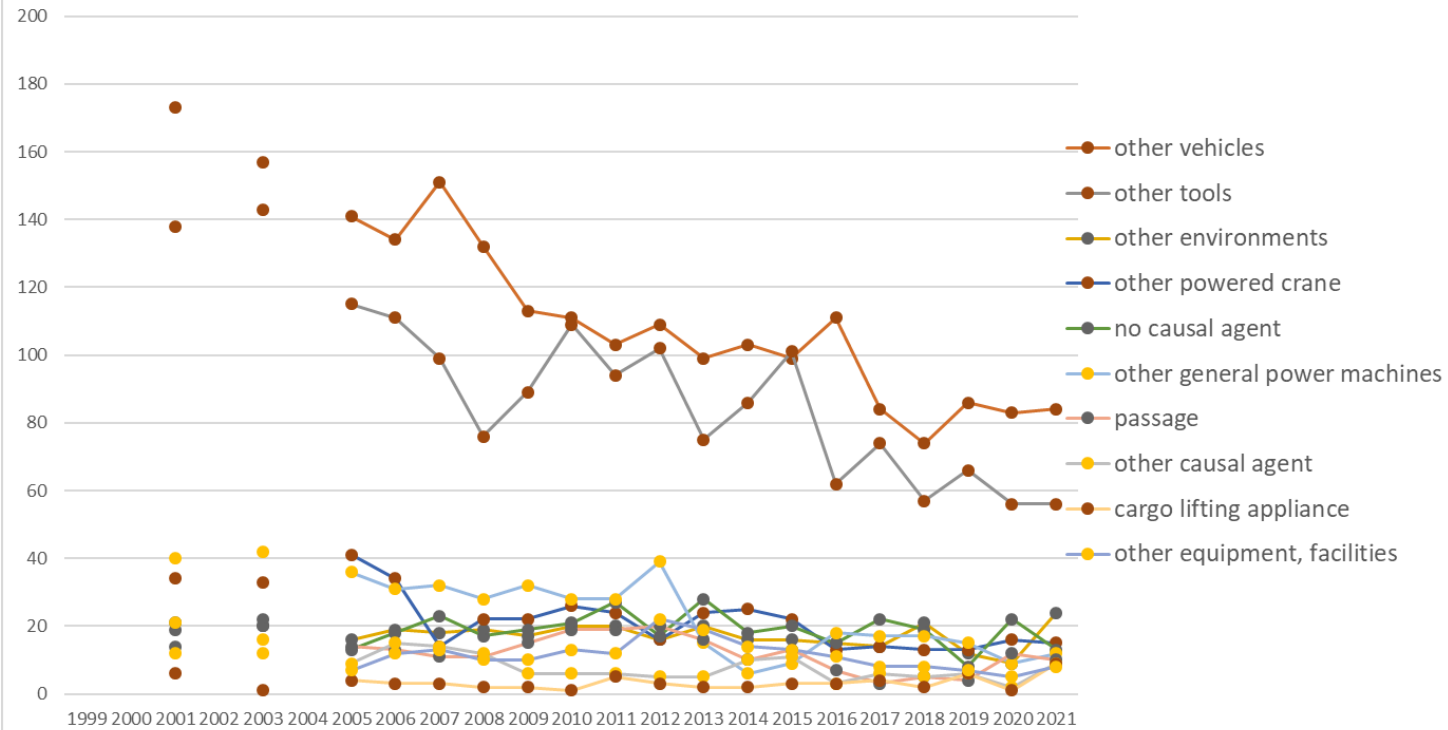
Transition of fatal and non-fatal accidents in large causal agents in code no. 070201 fishery (1999-2021)

Transition of fatal and non-fatal accidents in top 10 middle causal agents
(1999-2021)



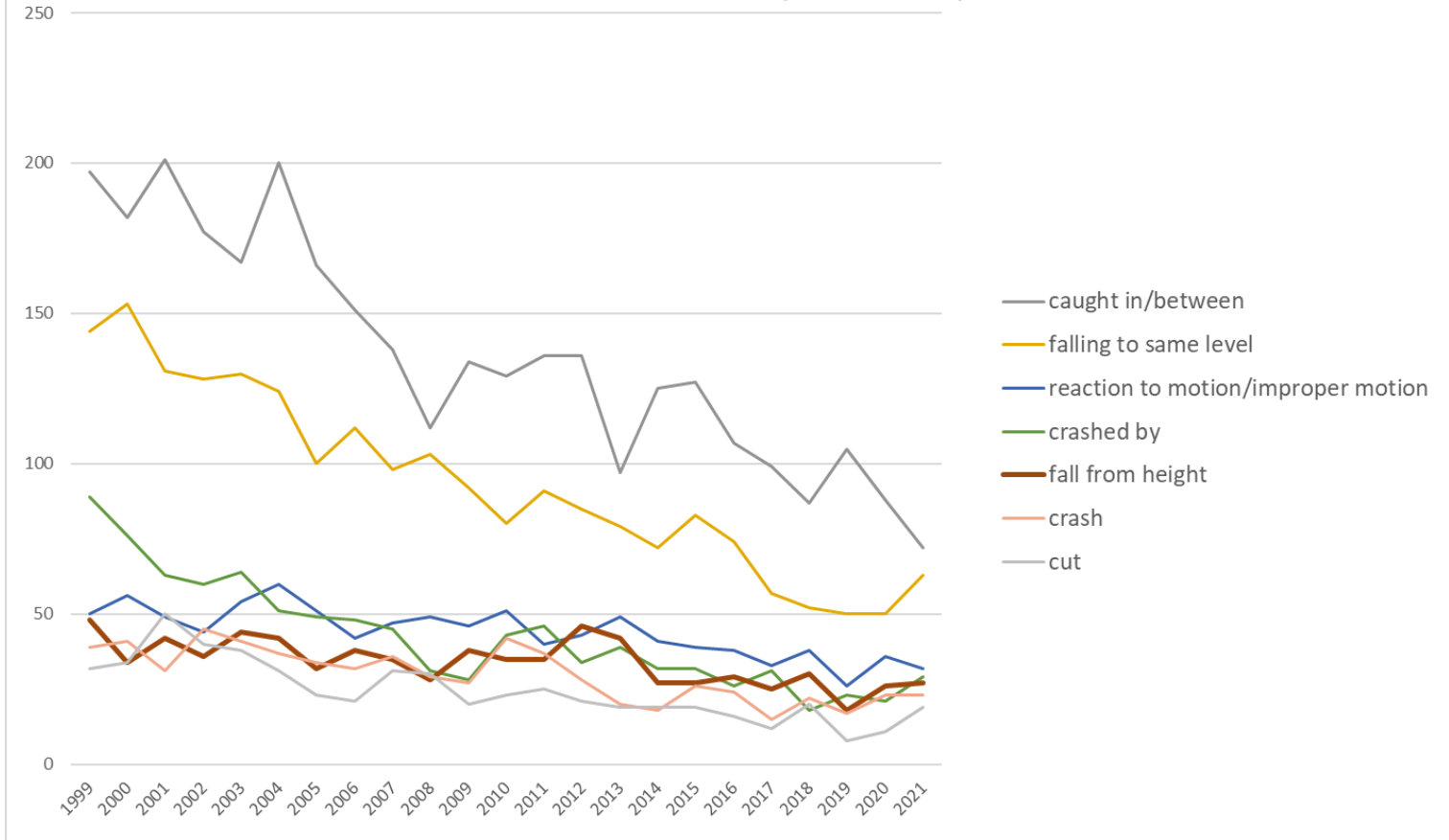
Transition of fatal and non-fatal accidents in middle causal agents in code no. 070201 fishery (1999-2021)

Transition of fatal and non-fatal accidents in top 10 small causal agents (1999-2021)



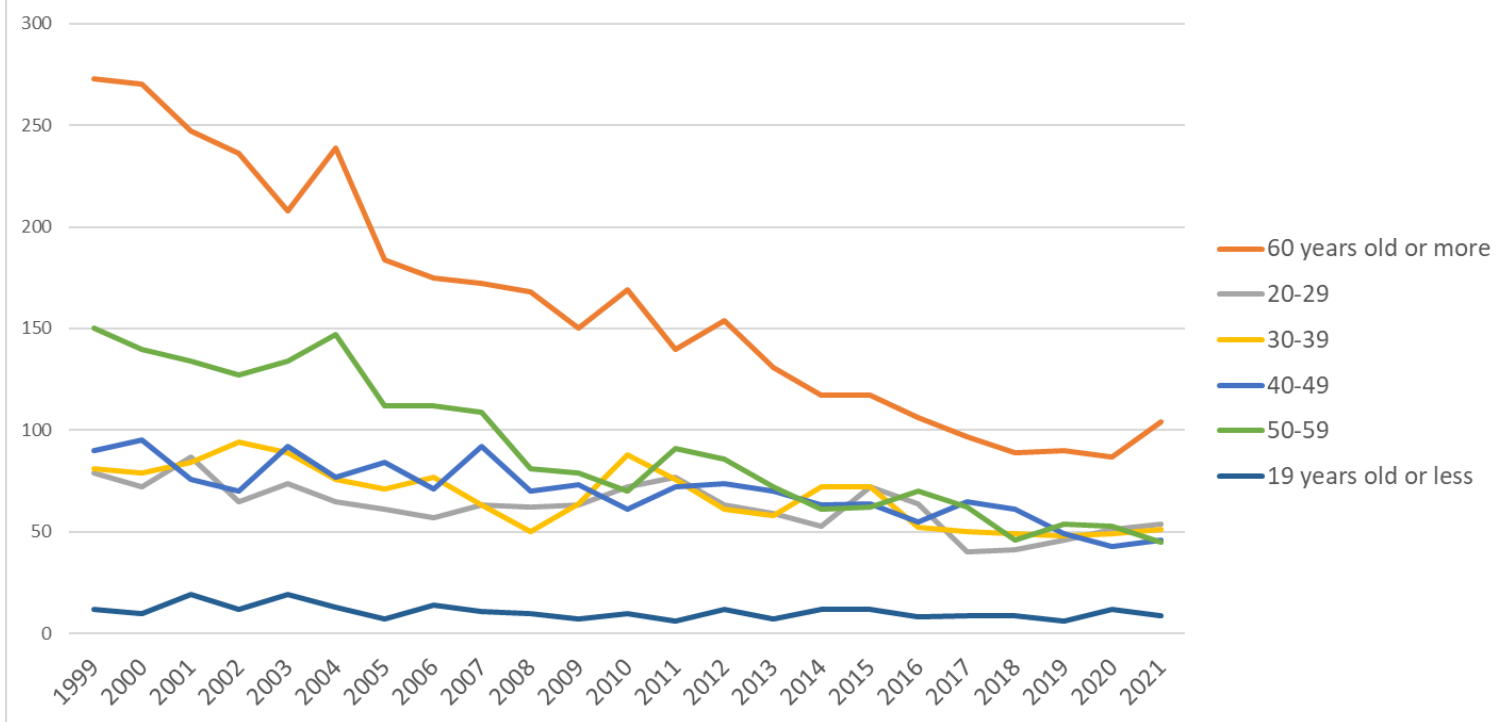
Transition of fatal and non-fatal accidents in small causal agents in code no. 070201 fishery (1999-2021)

Transition of fatal and non-fatal accidents in top 7 type of accidents
(1999-2021)



Transition of fatal and non-fatal accidents in type of accidents in code no. 070201 fishery (1999-2021)

Transition of fatal and non-fatal accidents in workers ages (1999-2021)



Transition of fatal and non-fatal accidents in workers ages in code no. 070201 fishery (1999-2021)

code	Month	1999	2000	2001	2002	2003	2004	2005	2006	2007	2008	2009	2010	2011	2012	2013	2014	2015	2016	2017	2018	2019	2020	2021	total	Month
7	July	65	56	68	61	70	67	40	48	47	38	45	37	36	43	26	26	40	26	36	32	26	30	38	1,001	July
5	May	76	63	73	55	61	70	53	38	50	36	31	41	52	32	33	36	38	36	28	29	32	21	36	1,020	May
9	September	68	68	65	65	60	56	53	55	44	46	50	41	48	52	43	43	32	43	37	29	27	29	32	1,086	September
4	April	62	58	54	49	69	44	46	36	53	39	26	36	36	33	50	30	36	38	36	32	31	28	32	954	April
6	June	56	73	49	42	52	54	49	49	59	42	34	46	46	30	35	44	32	14	21	29	21	27	28	932	June
10	October	77	58	74	60	55	68	47	65	47	42	45	43	50	61	44	49	49	44	23	27	40	19	27	1,114	October
3	March	51	50	50	38	48	59	23	34	32	36	28	33	36	38	27	27	32	25	24	23	20	35	27	796	March
11	November	66	66	50	47	60	51	59	38	35	30	40	62	36	36	35	46	44	36	30	21	29	26	24	967	November
8	August	65	57	75	71	49	54	60	61	46	45	45	56	43	40	27	26	22	33	26	28	24	26	22	1,001	August
12	December	33	37	38	44	32	40	31	31	45	26	33	28	26	27	18	14	31	19	27	16	17	21	16	650	December
2	February	29	35	22	28	32	26	36	28	28	28	24	25	18	27	21	17	19	24	20	12	11	17	16	543	February
1	January	37	45	29	44	28	28	22	23	24	33	35	22	35	31	38	20	24	17	15	17	15	16	11	609	January
	total	685	666	647	604	616	617	519	506	510	441	436	470	462	450	397	378	399	355	323	295	293	295	309	10,673	total

Transition of fatal and non-fatal accidents in prefectures in code no. 070201 fishery (1999-2021)

code	Prefecture	1999	2000	2001	2002	2003	2004	2005	2006	2007	2008	2009	2010	2011	2012	2013	2014	2015	2016	2017	2018	2019	2020	2021	total	Prefecture
1	Hokkaido	232	217	237		193		183	180	172	157	183	170	180	195	169	148	161	158	127	95	105	123	115	3,500	Hokkaido
22	Shizuoka	50	55	38		47		32	33	35	22	24	38	31	24	24	28	31	28	22	14	21	14	25	636	Shizuoka
42	Nagasaki	32	24	30		20		20	25	28	23	18	24	23	16	21	27	16	18	11	18	13	17	13	437	Nagasaki
4	Miyagi	13	12	14		19		15	11	13	12	10	6	7	4	1	8	15	8	7	3	6	11	13	208	Miyagi
39	Kochi	22	17	19		13		17	17	14	21	10	15	22	13	18	6	7	10	22	19	12	12	12	318	Kochi
17	Ishikawa	27	26	24		19		23	18	9	10	10	12	5	9	11	5	9	7	8	7	13	10	10	272	Ishikawa
2	Aomori	20	12	9		8		10	7	7	8	10	6	12	11	8	13	8	7	10	7	7	7	10	197	Aomori

37	Kagawa	8	10	9		12		3	8	8	2	1	1	3	2	4	2	5	2	2	2		1	1	86	Kagawa
13	Tokyo	8	3	4		5		3	2	4	1	2	3	8	2		1	1	1	1	2			1	52	Tokyo
34	Hiroshima	4	3					2		3	1	3	1	9	3	1	3	2	1	1	1	2	3	1	44	Hiroshima
6	Yamagata	2	1			1		3	2	4	2	1	2	2	2	3	1	2	1		3		2	1	35	Yamagata
33	Okayama							1	3	1		2	3	1	1			3						1	16	Okayama
9	Tochigi		2																					1	3	Tochigi
31	Tottori	3	2	4		3		1	2	1	2	2				1	1	1		1					24	Tottori
7	Fukushima	3	5	1		2		1		1	2		2		1	1	2		1						22	Fukushima
43	Kumamoto	1	3	4		2			2	1				1	1	2		3				2			22	Kumamoto
40	Fukuoka	1	1	1		1							1					1		2		2	1		11	Fukuoka
47	Okinawa							1									1		1		1		2		6	Okinawa
25	Shiga																		1		2				3	Shiga
20	Nagano		1																						1	Nagano
10	Gunma																									Gunma
11	Saitama																									Saitama
19	Yamanashi																									Yamanashi
29	Nara																									Nara
	total	685	666	647		616		519	506	510	441	436	470	462	450	397	378	399	355	323	295	293	295	309	9,452	total

Data source : <https://anzeninfo.mhlw.go.jp/user/anzen/tok/anst00.htm>

Return to https://www.jisha.or.jp/english/statistics/202211_23.html