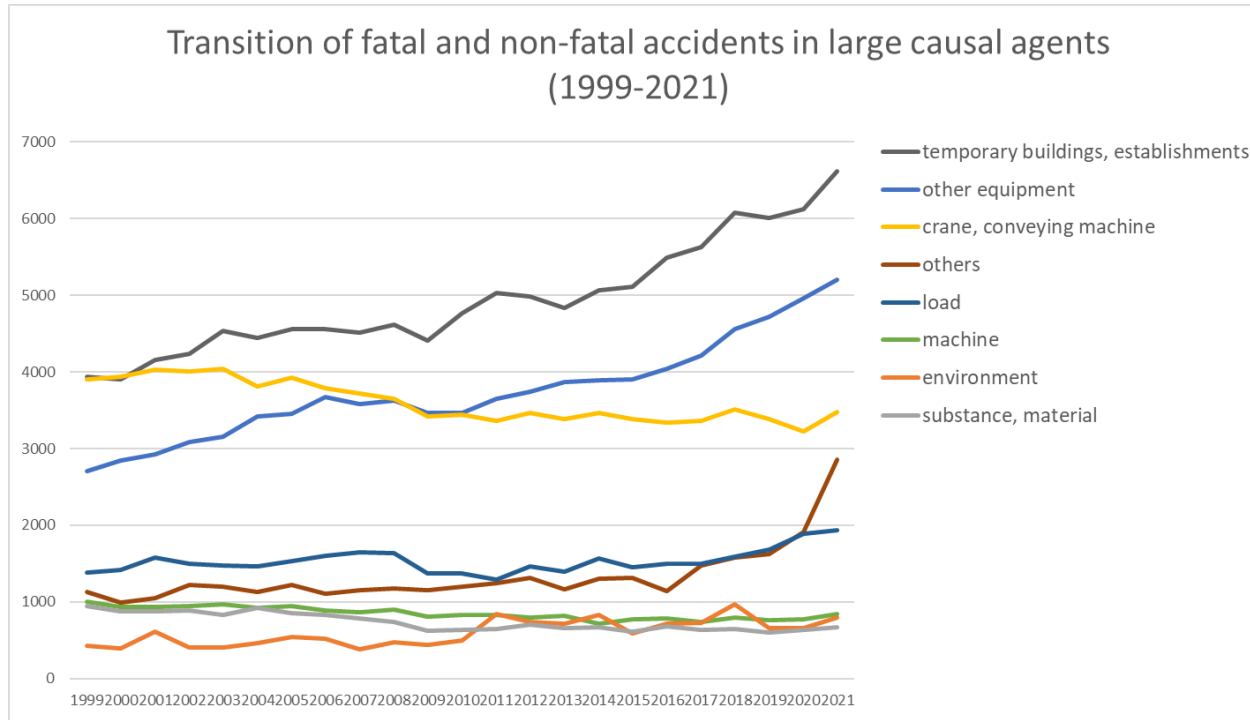
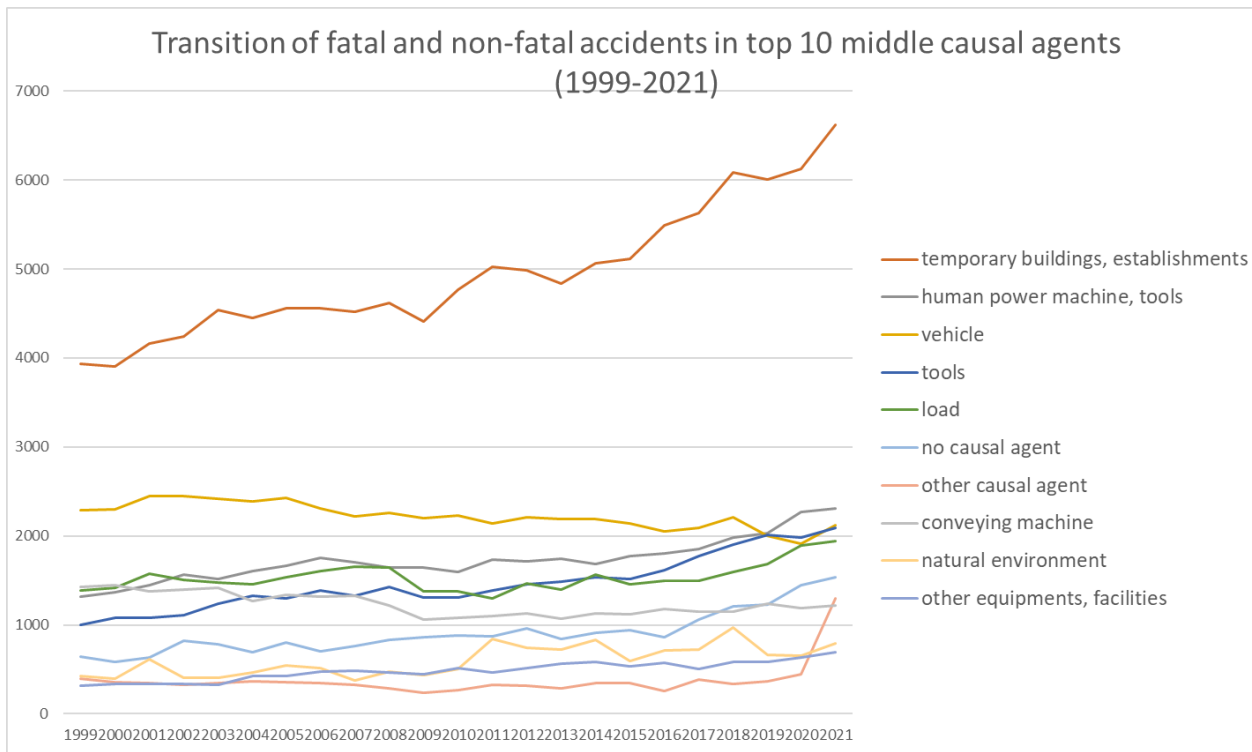


Transition of fatal and non-fatal accidents in each element like as causal agents, type of accidents, etc. in code no. 08 commerce (1999-2021)

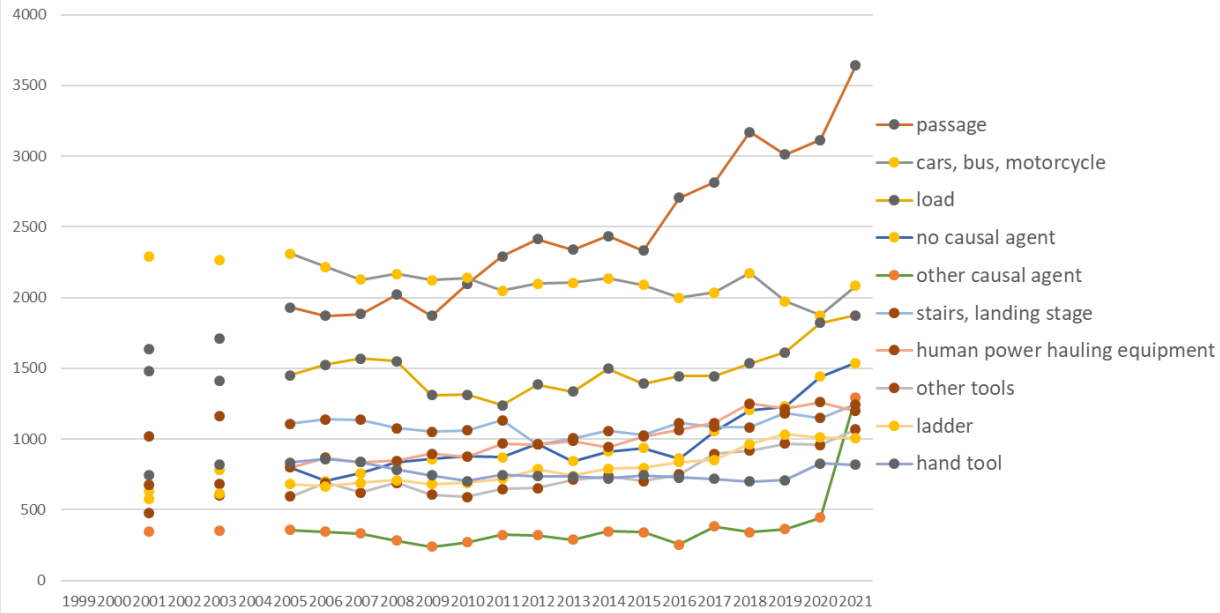


Transition of fatal and non-fatal accidents in large causal agents in code no. 08 commerce (1999-2021)



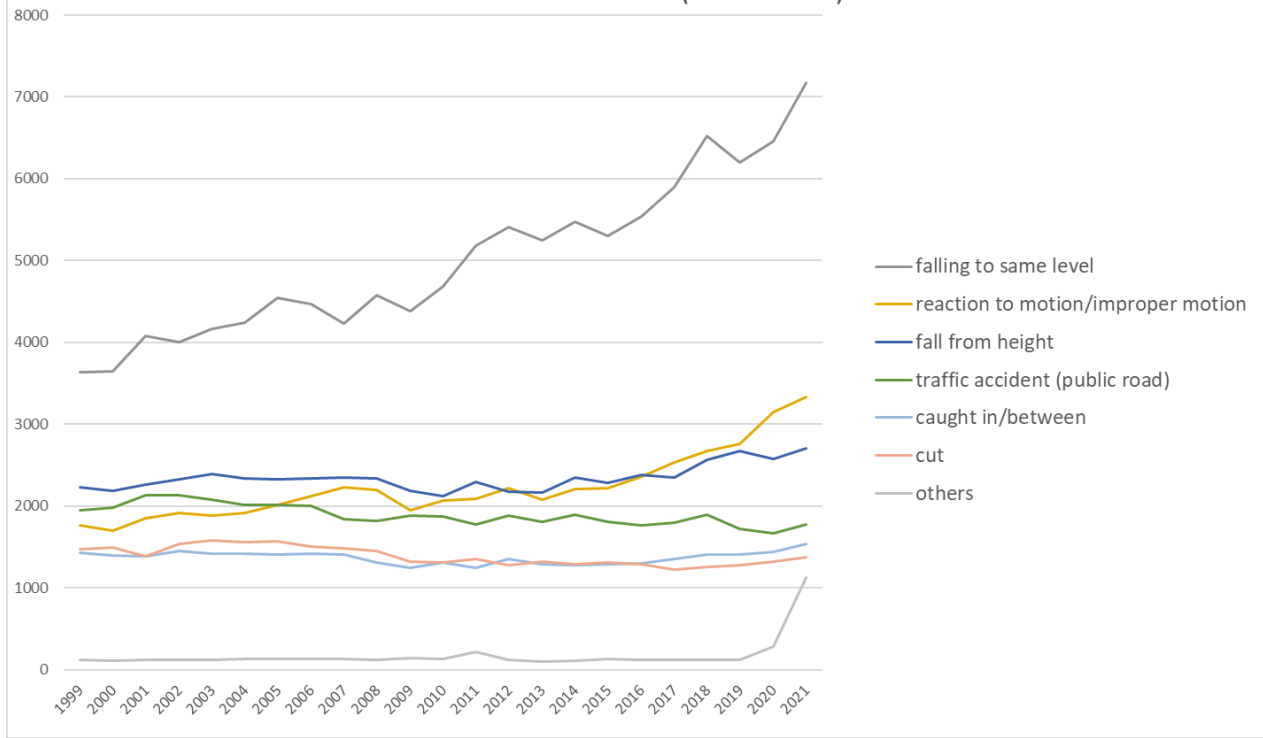
Transition of fatal and non-fatal accidents in middle causal agents in code no. 08 commerce (1999-2021)

Transition of fatal and non-fatal accidents in top 10 small causal agents
(1999-2021)



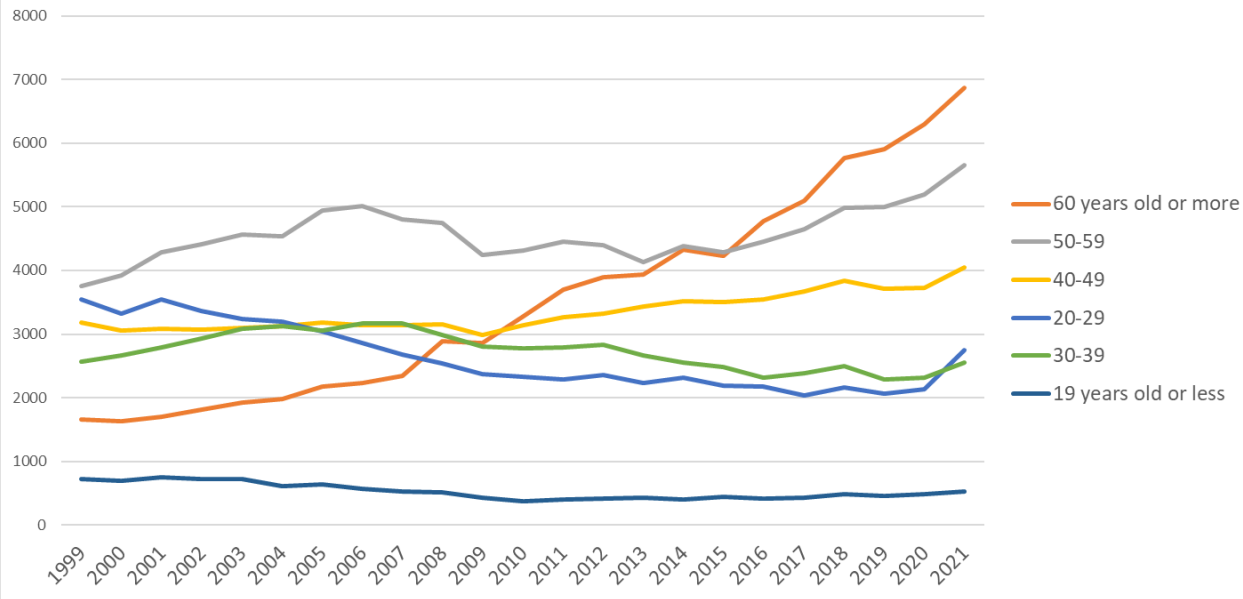
Transition of fatal and non-fatal accidents in small causal agents in code no. 08 commerce (1999-2021)

Transition of fatal and non-fatal accidents in top 7 type of accidents
(1999-2021)



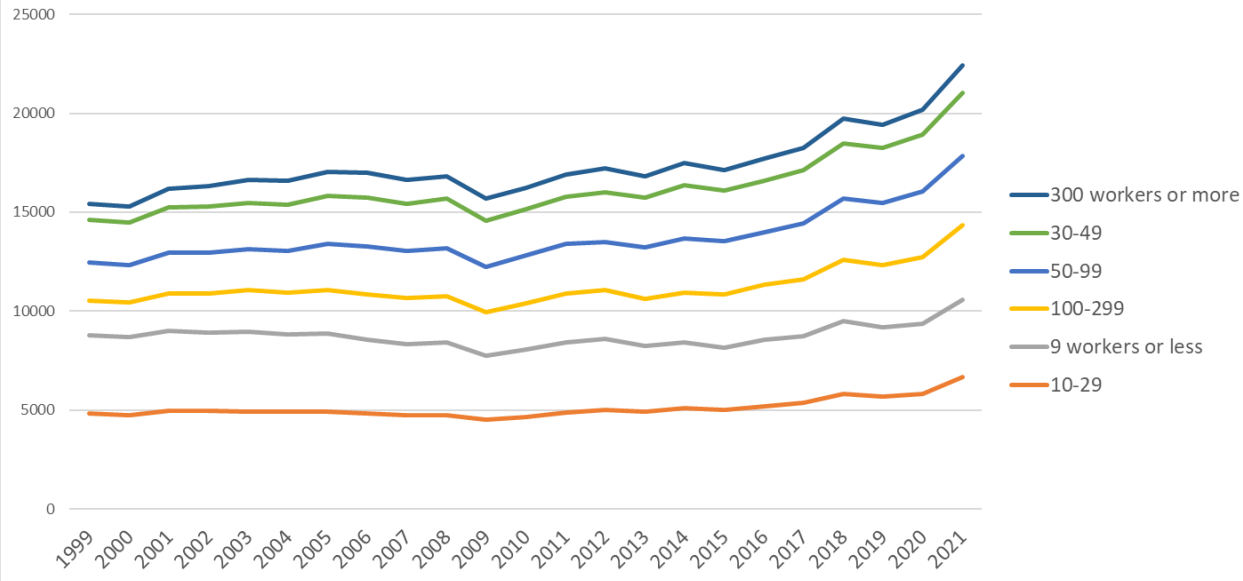
Transition of fatal and non-fatal accidents in type of accidents in code no. 08 commerce (1999-2021)

Transition of fatal and non-fatal accidents in workers ages (1999-2021)



Transition of fatal and non-fatal accidents in workers ages in code no. 08 commerce (1999-2021)

Transition of fatal and non-fatal accidents in workers scales (1999-2021)



Transition of fatal and non-fatal accidents in workers scales in code no. 08 commerce (1999-2021)

| | | | | | | | | | | | | | | | | | | | | | | | | | | |
|-----|-----------------------------------|--|--|--------|--|--------|--|--------|--------|--------|--------|--------|--------|--------|--------|--------|--------|--------|--------|--------|--------|--------|--------|--------|-----------------------------------|-------|
| 171 | felling machine | | | | | | | | | | | | | | | | | 1 | 1 | 1 | 2 | | 1 | 6 | felling machine | |
| 216 | gondola | | | 1 | | | | 1 | | 1 | 1 | | | | | | | | 1 | | | | 1 | 6 | gondola | |
| 226 | straddle carrier | | | | | | | 1 | | | 1 | | | | | | 1 | 1 | | | | | 1 | 6 | straddle carrier | |
| 172 | mobile logging machine | | | | | | | | | | | | | | | | | | | 1 | | | 1 | 2 | mobile logging machine | |
| 173 | skyline yarding machine | | | | | | | | | | | | | | | | | | | | | | 1 | 1 | skyline yarding machine | |
| 311 | boiler | | | 1 | | 1 | | 1 | 1 | 4 | 4 | 2 | | | | 1 | 1 | | | 1 | 1 | 2 | | 20 | boiler | |
| 143 | foundation work machine | | | 3 | | 1 | | 1 | 1 | 1 | 1 | | 3 | 1 | | 1 | 1 | 1 | 2 | 1 | | | | 18 | foundation work machine | |
| 223 | railway equipment | | | | | | | 1 | | | 1 | | | | | 1 | | | 2 | | | 1 | | 7 | railway equipment | |
| 155 | forging pressure hammer | | | 2 | | | | | | | | | | | 1 | | | | 2 | | | | | 5 | forging pressure hammer | |
| 515 | radiation | | | | | 1 | | | 1 | | | | | | | | 1 | | | | | | | 3 | radiation | |
| 179 | other mobile silviculture machine | | | | | | | | | | | | | | | | | | | 1 | | | | 1 | other mobile silviculture machine | |
| 213 | derrick crane | | | | | | | | | | | | | | | | | | | | | | | | derrick crane | |
| 218 | simple skyline yarding equipment | | | | | | | | | | | | | | | | | | | | | | | | simple skyline yarding equipment | |
| | total | | | 16,164 | | 16,621 | | 17,022 | 16,987 | 16,656 | 16,823 | 15,688 | 16,211 | 16,907 | 17,218 | 16,836 | 17,505 | 17,150 | 17,693 | 18,270 | 19,744 | 19,434 | 20,169 | 22,408 | 335,506 | total |

Transition of fatal and non-fatal accidents in type of accidents in code no. 08 commerce (1999-2021)

| code | Type of accidents | 1999 | 2000 | 2001 | 2002 | 2003 | 2004 | 2005 | 2006 | 2007 | 2008 | 2009 | 2010 | 2011 | 2012 | 2013 | 2014 | 2015 | 2016 | 2017 | 2018 | 2019 | 2020 | 2021 | total | Type of accidents |
|------|------------------------------------|-------|-------|-------|-------|-------|-------|-------|-------|-------|-------|-------|-------|-------|-------|-------|-------|-------|-------|-------|-------|-------|-------|-------|---------|------------------------------------|
| 02 | falling to same level | 3,636 | 3,645 | 4,082 | 4,002 | 4,171 | 4,242 | 4,541 | 4,472 | 4,232 | 4,578 | 4,378 | 4,689 | 5,181 | 5,405 | 5,250 | 5,474 | 5,298 | 5,536 | 5,899 | 6,523 | 6,201 | 6,456 | 7,176 | 115,067 | falling to same level |
| 19 | reaction to motion/improper motion | 1,761 | 1,702 | 1,852 | 1,916 | 1,884 | 1,920 | 2,013 | 2,125 | 2,231 | 2,194 | 1,947 | 2,073 | 2,090 | 2,217 | 2,079 | 2,208 | 2,214 | 2,355 | 2,531 | 2,672 | 2,756 | 3,145 | 3,336 | 51,221 | reaction to motion/improper motion |
| 01 | fall from height | 2,232 | 2,182 | 2,264 | 2,331 | 2,396 | 2,338 | 2,325 | 2,334 | 2,344 | 2,342 | 2,182 | 2,127 | 2,299 | 2,172 | 2,166 | 2,348 | 2,287 | 2,377 | 2,354 | 2,569 | 2,672 | 2,578 | 2,703 | 53,922 | fall from height |
| | traffic accident | | | | | | | | | | | | | | | | | | | | | | | | | traffic accident |

| | | | | | | | | | | | | | | | | | | | | | | | | | | |
|----|------------------------------------|--------|--------|--------|--------|--------|--------|--------|--------|--------|--------|--------|--------|--------|--------|--------|--------|--------|--------|--------|--------|--------|--------|--------|---------|------------------------------------|
| 17 | (public road) | 1,948 | 1,977 | 2,129 | 2,136 | 2,083 | 2,016 | 2,018 | 1,999 | 1,840 | 1,817 | 1,882 | 1,878 | 1,771 | 1,886 | 1,811 | 1,899 | 1,806 | 1,768 | 1,792 | 1,897 | 1,726 | 1,672 | 1,773 | 43,524 | (public road) |
| 07 | caught in/between | 1,429 | 1,395 | 1,387 | 1,446 | 1,416 | 1,417 | 1,407 | 1,418 | 1,405 | 1,309 | 1,250 | 1,309 | 1,248 | 1,357 | 1,293 | 1,278 | 1,292 | 1,300 | 1,352 | 1,405 | 1,413 | 1,435 | 1,533 | 31,494 | caught in/between |
| 08 | cut | 1,471 | 1,493 | 1,388 | 1,536 | 1,579 | 1,557 | 1,570 | 1,501 | 1,487 | 1,454 | 1,318 | 1,314 | 1,357 | 1,277 | 1,320 | 1,284 | 1,311 | 1,286 | 1,221 | 1,260 | 1,282 | 1,324 | 1,374 | 31,964 | cut |
| 90 | others | 126 | 108 | 121 | 123 | 125 | 135 | 127 | 132 | 127 | 122 | 139 | 128 | 218 | 119 | 104 | 106 | 128 | 116 | 120 | 126 | 117 | 283 | 1,127 | 4,077 | others |
| 03 | crash | 690 | 731 | 713 | 658 | 744 | 718 | 725 | 732 | 773 | 749 | 634 | 742 | 653 | 694 | 710 | 744 | 779 | 834 | 897 | 927 | 939 | 931 | 1,047 | 17,764 | crash |
| 04 | struck by flying or falling object | 861 | 807 | 850 | 793 | 881 | 830 | 876 | 845 | 793 | 824 | 684 | 706 | 685 | 747 | 746 | 760 | 734 | 760 | 709 | 789 | 785 | 799 | 805 | 18,069 | struck by flying or falling object |
| 06 | crashed by | 504 | 502 | 518 | 507 | 547 | 542 | 558 | 531 | 593 | 589 | 512 | 462 | 526 | 537 | 521 | 572 | 566 | 540 | 583 | 638 | 652 | 694 | 699 | 12,893 | crashed by |
| 11 | contact to high/low-temperature | 257 | 282 | 318 | 337 | 292 | 330 | 315 | 350 | 334 | 365 | 309 | 366 | 330 | 353 | 391 | 386 | 336 | 358 | 364 | 461 | 446 | 392 | 375 | 8,047 | contact to high/low-temperature |
| 05 | collapse | 326 | 317 | 358 | 328 | 355 | 365 | 373 | 368 | 314 | 316 | 334 | 301 | 295 | 310 | 321 | 332 | 284 | 326 | 323 | 353 | 316 | 318 | 331 | 7,564 | collapse |
| 12 | contact to harmful substance | 38 | 32 | 33 | 43 | 22 | 40 | 40 | 36 | 39 | 35 | 34 | 30 | 39 | 25 | 28 | 37 | 28 | 33 | 33 | 35 | 39 | 53 | 55 | 827 | contact to harmful substance |
| 99 | unclassifiable | 50 | 40 | 60 | 62 | 46 | 48 | 46 | 51 | 50 | 47 | 31 | 31 | 32 | 42 | 26 | 19 | 34 | 32 | 29 | 25 | 30 | 23 | 15 | 869 | unclassifiable |
| 09 | injury to the sole of the foot | 33 | 27 | 34 | 22 | 28 | 24 | 27 | 26 | 16 | 17 | 15 | 17 | 15 | 20 | 23 | 14 | 17 | 19 | 21 | 13 | 9 | 18 | 15 | 470 | injury to the sole of the foot |
| 18 | traffic accident (others) | 22 | 19 | 15 | 13 | 16 | 8 | 21 | 27 | 24 | 20 | 13 | 10 | 15 | 19 | 14 | 14 | 14 | 15 | 16 | 20 | 20 | 18 | 13 | 386 | traffic accident (others) |
| 16 | fire | 18 | 11 | 7 | 16 | 10 | 16 | 10 | 17 | 16 | 8 | 6 | 9 | 17 | 10 | 11 | 9 | 4 | 11 | 4 | 7 | 7 | 1 | 9 | 234 | fire |
| 14 | explosion | 15 | 8 | 7 | 9 | 7 | 6 | 10 | 6 | 11 | 11 | 5 | 4 | 9 | 8 | 7 | 2 | 4 | 8 | 4 | 3 | 6 | 4 | 9 | 163 | explosion |
| 15 | burst | 13 | 16 | 17 | 18 | 12 | 15 | 17 | 13 | 14 | 18 | 11 | 9 | 6 | 12 | 8 | 10 | 8 | 13 | 8 | 11 | 8 | 12 | 6 | 275 | burst |
| 13 | electric shock | 1 | 4 | 10 | 12 | 7 | 6 | 2 | 3 | 11 | 8 | 2 | 6 | 6 | 6 | 5 | 8 | 6 | 4 | 6 | 8 | 5 | 9 | 5 | 140 | electric shock |
| 10 | drown | 1 | 3 | 1 | 2 | | 1 | 1 | 1 | 2 | | 2 | | 115 | 2 | 2 | 1 | | 2 | 4 | 2 | 5 | 4 | 2 | 153 | drown |
| | total | 15,432 | 15,301 | 16,164 | 16,310 | 16,621 | 16,574 | 17,022 | 16,987 | 16,656 | 16,823 | 15,688 | 16,211 | 16,907 | 17,218 | 16,836 | 17,505 | 17,150 | 17,693 | 18,270 | 19,744 | 19,434 | 20,169 | 22,408 | 399,123 | total |

Transition of fatal and non-fatal accidents in workers ages in code no. 08 commerce (1999-2021)

| code | Age | 1999 | 2000 | 2001 | 2002 | 2003 | 2004 | 2005 | 2006 | 2007 | 2008 | 2009 | 2010 | 2011 | 2012 | 2013 | 2014 | 2015 | 2016 | 2017 | 2018 | 2019 | 2020 | 2021 | total | Age |
|------|----------------------|--------|--------|--------|--------|--------|--------|--------|--------|--------|--------|--------|--------|--------|--------|--------|--------|--------|--------|--------|--------|--------|--------|--------|---------|----------------------|
| 6 | 60 years old or more | 1,653 | 1,633 | 1,700 | 1,806 | 1,921 | 1,986 | 2,172 | 2,233 | 2,342 | 2,882 | 2,854 | 3,278 | 3,694 | 3,893 | 3,936 | 4,324 | 4,233 | 4,781 | 5,099 | 5,760 | 5,909 | 6,294 | 6,869 | 81,252 | 60 years old or more |
| 5 | 50-59 | 3,760 | 3,927 | 4,282 | 4,413 | 4,561 | 4,539 | 4,942 | 5,019 | 4,796 | 4,748 | 4,237 | 4,319 | 4,455 | 4,394 | 4,134 | 4,383 | 4,290 | 4,459 | 4,654 | 4,988 | 5,001 | 5,195 | 5,660 | 105,156 | 50-59 |
| 4 | 40-49 | 3,186 | 3,055 | 3,089 | 3,076 | 3,094 | 3,120 | 3,175 | 3,143 | 3,145 | 3,159 | 2,992 | 3,134 | 3,271 | 3,321 | 3,435 | 3,524 | 3,500 | 3,547 | 3,674 | 3,842 | 3,719 | 3,733 | 4,049 | 76,983 | 40-49 |
| 2 | 20-29 | 3,548 | 3,326 | 3,550 | 3,357 | 3,233 | 3,191 | 3,048 | 2,858 | 2,678 | 2,536 | 2,368 | 2,332 | 2,286 | 2,358 | 2,237 | 2,316 | 2,193 | 2,182 | 2,033 | 2,167 | 2,069 | 2,139 | 2,746 | 60,751 | 20-29 |
| 3 | 30-39 | 2,563 | 2,670 | 2,792 | 2,937 | 3,086 | 3,121 | 3,052 | 3,164 | 3,163 | 2,983 | 2,804 | 2,775 | 2,795 | 2,832 | 2,660 | 2,552 | 2,485 | 2,315 | 2,382 | 2,500 | 2,281 | 2,322 | 2,552 | 62,786 | 30-39 |
| 1 | 19 years old or less | 722 | 690 | 751 | 721 | 726 | 617 | 633 | 570 | 532 | 515 | 433 | 373 | 406 | 420 | 434 | 406 | 449 | 409 | 428 | 487 | 455 | 486 | 532 | 12,195 | 19 years old or less |
| | total | 15,432 | 15,301 | 16,164 | 16,310 | 16,621 | 16,574 | 17,022 | 16,987 | 16,656 | 16,823 | 15,688 | 16,211 | 16,907 | 17,218 | 16,836 | 17,505 | 17,150 | 17,693 | 18,270 | 19,744 | 19,434 | 20,169 | 22,408 | 399,123 | total |

Transition of fatal and non-fatal accidents in workers scales in code no. 08 commerce (1999-2021)

| code | Workers scale | 1999 | 2000 | 2001 | 2002 | 2003 | 2004 | 2005 | 2006 | 2007 | 2008 | 2009 | 2010 | 2011 | 2012 | 2013 | 2014 | 2015 | 2016 | 2017 | 2018 | 2019 | 2020 | 2021 | total | Workers scale |
|------|---------------------|--------|--------|--------|--------|--------|--------|--------|--------|--------|--------|--------|--------|--------|--------|--------|--------|--------|--------|--------|--------|--------|--------|--------|---------|---------------------|
| 2 | 10-29 | 4,818 | 4,756 | 4,969 | 4,966 | 4,914 | 4,931 | 4,904 | 4,828 | 4,724 | 4,746 | 4,500 | 4,664 | 4,875 | 5,026 | 4,907 | 5,114 | 5,006 | 5,194 | 5,355 | 5,799 | 5,697 | 5,811 | 6,687 | 117,191 | 10-29 |
| 1 | 9 workers or less | 3,959 | 3,940 | 4,057 | 3,928 | 4,031 | 3,905 | 3,965 | 3,733 | 3,588 | 3,689 | 3,256 | 3,393 | 3,554 | 3,554 | 3,333 | 3,310 | 3,160 | 3,372 | 3,389 | 3,692 | 3,487 | 3,536 | 3,897 | 83,728 | 9 workers or less |
| 5 | 100-299 | 1,766 | 1,723 | 1,859 | 1,983 | 2,116 | 2,093 | 2,196 | 2,283 | 2,347 | 2,342 | 2,212 | 2,317 | 2,454 | 2,470 | 2,401 | 2,519 | 2,670 | 2,764 | 2,882 | 3,109 | 3,150 | 3,366 | 3,779 | 56,801 | 100-299 |
| 4 | 50-99 | 1,940 | 1,921 | 2,049 | 2,099 | 2,089 | 2,103 | 2,348 | 2,441 | 2,364 | 2,416 | 2,290 | 2,425 | 2,507 | 2,457 | 2,603 | 2,724 | 2,700 | 2,666 | 2,827 | 3,084 | 3,118 | 3,338 | 3,495 | 58,004 | 50-99 |
| 3 | 30-49 | 2,128 | 2,144 | 2,300 | 2,320 | 2,314 | 2,368 | 2,404 | 2,449 | 2,420 | 2,487 | 2,332 | 2,335 | 2,397 | 2,515 | 2,501 | 2,698 | 2,539 | 2,583 | 2,690 | 2,789 | 2,809 | 2,852 | 3,181 | 57,555 | 30-49 |
| 6 | 300 workers or more | 821 | 817 | 930 | 1,014 | 1,157 | 1,174 | 1,205 | 1,253 | 1,213 | 1,143 | 1,098 | 1,077 | 1,120 | 1,196 | 1,091 | 1,140 | 1,075 | 1,114 | 1,127 | 1,271 | 1,173 | 1,266 | 1,369 | 25,844 | 300 workers or more |
| | total | 15,432 | 15,301 | 16,164 | 16,310 | 16,621 | 16,574 | 17,022 | 16,987 | 16,656 | 16,823 | 15,688 | 16,211 | 16,907 | 17,218 | 16,836 | 17,505 | 17,150 | 17,693 | 18,270 | 19,744 | 19,434 | 20,169 | 22,408 | 399,123 | total |

Transition of fatal and non-fatal accidents in months in code no. 08 commerce (1999-2021)

| code | Month | 1999 | 2000 | 2001 | 2002 | 2003 | 2004 | 2005 | 2006 | 2007 | 2008 | 2009 | 2010 | 2011 | 2012 | 2013 | 2014 | 2015 | 2016 | 2017 | 2018 | 2019 | 2020 | 2021 | total | Month |
|------|---------|-------|-------|-------|-------|-------|-------|-------|-------|-------|-------|-------|-------|-------|-------|-------|-------|-------|-------|-------|-------|-------|-------|-------|--------|---------|
| 1 | January | 1,312 | 1,259 | 1,668 | 1,416 | 1,607 | 1,569 | 1,502 | 1,575 | 1,395 | 1,537 | 1,454 | 1,388 | 1,680 | 1,596 | 1,723 | 1,523 | 1,538 | 1,749 | 1,800 | 2,127 | 1,708 | 1,630 | 2,250 | 37,006 | January |
| 8 | August | 1,204 | 1,188 | 1,345 | 1,380 | 1,404 | 1,343 | 1,328 | 1,424 | 1,492 | 1,353 | 1,340 | 1,426 | 1,452 | 1,373 | 1,387 | 1,425 | 1,440 | 1,466 | 1,495 | 1,577 | 1,715 | 1,716 | 2,216 | 33,489 | August |
| 7 | July | 1,359 | 1,354 | 1,409 | 1,478 | 1,441 | 1,500 | 1,462 | 1,491 | 1,484 | 1,471 | 1,396 | 1,401 | 1,460 | 1,486 | 1,445 | 1,458 | 1,510 | 1,501 | 1,581 | 1,726 | 1,743 | 1,859 | 2,087 | 35,102 | July |
| 6 | June | 1,368 | 1,250 | 1,365 | 1,325 | 1,385 | 1,411 | 1,416 | 1,407 | 1,460 | 1,390 | 1,312 | 1,443 | 1,408 | 1,424 | 1,341 | 1,389 | 1,450 | 1,451 | 1,471 | 1,574 | 1,640 | 1,879 | 1,848 | 33,407 | June |

| | | | | | | | | | | | | | | | | | | | | | | | | | | |
|----|-----------|--------|--------|--------|--------|--------|--------|--------|--------|--------|--------|--------|--------|--------|--------|--------|--------|--------|--------|--------|--------|--------|--------|--------|---------|-----------|
| 12 | December | 1,262 | 1,181 | 1,252 | 1,301 | 1,336 | 1,286 | 1,603 | 1,347 | 1,294 | 1,276 | 1,225 | 1,257 | 1,420 | 1,390 | 1,391 | 1,576 | 1,441 | 1,469 | 1,552 | 1,551 | 1,608 | 1,774 | 1,835 | 32,627 | December |
| 3 | March | 1,281 | 1,438 | 1,356 | 1,382 | 1,438 | 1,430 | 1,494 | 1,433 | 1,468 | 1,455 | 1,385 | 1,458 | 1,617 | 1,455 | 1,353 | 1,487 | 1,575 | 1,503 | 1,526 | 1,643 | 1,677 | 1,596 | 1,811 | 34,261 | March |
| 5 | May | 1,328 | 1,273 | 1,361 | 1,432 | 1,378 | 1,372 | 1,373 | 1,416 | 1,436 | 1,409 | 1,258 | 1,299 | 1,337 | 1,410 | 1,345 | 1,348 | 1,383 | 1,478 | 1,438 | 1,523 | 1,587 | 1,577 | 1,787 | 32,548 | May |
| 2 | February | 1,366 | 1,326 | 1,290 | 1,293 | 1,301 | 1,284 | 1,445 | 1,435 | 1,309 | 1,681 | 1,317 | 1,413 | 1,363 | 1,673 | 1,343 | 1,857 | 1,340 | 1,464 | 1,470 | 1,653 | 1,597 | 1,526 | 1,767 | 33,513 | February |
| 10 | October | 1,229 | 1,302 | 1,398 | 1,372 | 1,332 | 1,358 | 1,403 | 1,387 | 1,461 | 1,355 | 1,329 | 1,340 | 1,291 | 1,355 | 1,499 | 1,453 | 1,330 | 1,406 | 1,580 | 1,695 | 1,574 | 1,695 | 1,736 | 32,880 | October |
| 4 | April | 1,314 | 1,261 | 1,271 | 1,352 | 1,388 | 1,392 | 1,386 | 1,343 | 1,326 | 1,359 | 1,315 | 1,339 | 1,236 | 1,374 | 1,347 | 1,322 | 1,394 | 1,403 | 1,462 | 1,494 | 1,496 | 1,550 | 1,713 | 31,837 | April |
| 9 | September | 1,293 | 1,232 | 1,249 | 1,295 | 1,278 | 1,390 | 1,312 | 1,375 | 1,245 | 1,297 | 1,178 | 1,268 | 1,405 | 1,373 | 1,286 | 1,362 | 1,419 | 1,422 | 1,527 | 1,666 | 1,555 | 1,758 | 1,711 | 31,896 | September |
| 11 | November | 1,116 | 1,237 | 1,200 | 1,284 | 1,333 | 1,239 | 1,298 | 1,354 | 1,286 | 1,240 | 1,179 | 1,179 | 1,238 | 1,309 | 1,376 | 1,305 | 1,330 | 1,381 | 1,368 | 1,515 | 1,534 | 1,609 | 1,647 | 30,557 | November |
| | total | 15,432 | 15,301 | 16,164 | 16,310 | 16,621 | 16,574 | 17,022 | 16,987 | 16,656 | 16,823 | 15,688 | 16,211 | 16,907 | 17,218 | 16,836 | 17,505 | 17,150 | 17,693 | 18,270 | 19,744 | 19,434 | 20,169 | 22,408 | 399,123 | total |

Transition of fatal and non-fatal accidents in prefectures in code no. 08 commerce (1999-2021)

| code | Prefecture | 1999 | 2000 | 2001 | 2002 | 2003 | 2004 | 2005 | 2006 | 2007 | 2008 | 2009 | 2010 | 2011 | 2012 | 2013 | 2014 | 2015 | 2016 | 2017 | 2018 | 2019 | 2020 | 2021 | total | Prefecture |
|------|------------|-------|-------|-------|------|-------|------|-------|-------|-------|-------|-------|-------|-------|-------|-------|-------|-------|-------|-------|-------|-------|-------|-------|--------|------------|
| 13 | Tokyo | 1,313 | 1,303 | 1,404 | | 1,431 | | 1,443 | 1,499 | 1,540 | 1,546 | 1,385 | 1,497 | 1,607 | 1,637 | 1,542 | 1,617 | 1,578 | 1,611 | 1,668 | 1,863 | 1,902 | 1,828 | 2,204 | 33,418 | Tokyo |
| 27 | Osaka | 1,106 | 1,100 | 1,200 | | 1,291 | | 1,245 | 1,301 | 1,279 | 1,268 | 1,162 | 1,130 | 1,137 | 1,203 | 1,211 | 1,242 | 1,167 | 1,198 | 1,268 | 1,426 | 1,418 | 1,380 | 1,671 | 26,403 | Osaka |
| 14 | Kanagawa | 1,071 | 974 | 1,043 | | 1,091 | | 1,094 | 1,053 | 1,016 | 1,035 | 978 | 1,038 | 1,066 | 1,115 | 1,040 | 1,076 | 1,090 | 1,083 | 1,039 | 1,185 | 1,168 | 1,249 | 1,368 | 22,872 | Kanagawa |
| 23 | Aichi | 897 | 892 | 888 | | 857 | | 920 | 929 | 873 | 975 | 926 | 937 | 970 | 911 | 862 | 1,068 | 886 | 906 | 1,040 | 1,145 | 1,048 | 1,145 | 1,245 | 20,320 | Aichi |
| 1 | Hokkaido | 741 | 789 | 878 | | 877 | | 904 | 900 | 872 | 856 | 806 | 870 | 827 | 861 | 920 | 957 | 930 | 960 | 977 | 1,026 | 1,005 | 1,130 | 1,240 | 19,326 | Hokkaido |
| 40 | Fukuoka | 785 | 773 | 777 | | 779 | | 853 | 808 | 782 | 776 | 786 | 783 | 805 | 882 | 798 | 928 | 948 | 1,012 | 937 | 993 | 970 | 998 | 1,166 | 18,339 | Fukuoka |
| 11 | Saitama | 578 | 638 | 757 | | 819 | | 805 | 872 | 841 | 865 | 789 | 837 | 784 | 871 | 857 | 944 | 994 | 955 | 955 | 1,035 | 987 | 1,079 | 1,130 | 18,392 | Saitama |
| 12 | Chiba | 650 | 647 | 750 | | 797 | | 683 | 754 | 741 | 751 | 730 | 678 | 737 | 786 | 710 | 754 | 746 | 789 | 775 | 881 | 921 | 923 | 992 | 16,195 | Chiba |
| 28 | Hyogo | 643 | 590 | 618 | | 687 | | 715 | 645 | 670 | 647 | 592 | 681 | 655 | 684 | 649 | 694 | 696 | 724 | 732 | 781 | 758 | 798 | 884 | 14,543 | Hyogo |
| 22 | Shizuoka | 507 | 540 | 527 | | 559 | | 500 | 548 | 570 | 499 | 533 | 505 | 543 | 512 | 521 | 530 | 544 | 546 | 566 | 603 | 627 | 602 | 690 | 11,572 | Shizuoka |
| 34 | Hiroshima | 416 | 387 | 407 | | 400 | | 443 | 416 | 435 | 388 | 414 | 387 | 415 | 399 | 411 | 385 | 439 | 408 | 454 | 445 | 428 | 465 | 533 | 8,875 | Hiroshima |
| 4 | Miyagi | 322 | 299 | 323 | | 395 | | 416 | 453 | 392 | 442 | 333 | 363 | 529 | 451 | 416 | 438 | 378 | 438 | 376 | 467 | 436 | 413 | 504 | 8,584 | Miyagi |
| 15 | Niigata | 342 | 356 | 349 | | 328 | | 344 | 331 | 354 | 322 | 284 | 304 | 364 | 378 | 392 | 325 | 343 | 318 | 387 | 449 | 390 | 372 | 497 | 7,529 | Niigata |
| 8 | Ibaraki | 366 | 359 | 361 | | 378 | | 329 | 391 | 389 | 359 | 313 | 321 | 349 | 358 | 346 | 383 | 379 | 419 | 378 | 415 | 407 | 448 | 483 | 7,931 | Ibaraki |
| 26 | Kyoto | 279 | 409 | 328 | | 375 | | 395 | 350 | 369 | 351 | 326 | 335 | 375 | 363 | 361 | 345 | 339 | 336 | 331 | 363 | 358 | 369 | 397 | 7,454 | Kyoto |
| 10 | Gunma | 276 | 244 | 297 | | 281 | | 292 | 293 | 261 | 263 | 249 | 273 | 274 | 264 | 301 | 313 | 298 | 330 | 315 | 325 | 347 | 376 | 374 | 6,246 | Gunma |

| | | | | | | | | | | | | | | | | | | | | | | | | | | |
|----|-----------|-----|-----|-----|--|-----|--|-----|-----|-----|-----|-----|-----|-----|-----|-----|-----|-----|-----|-----|-----|-----|-----|-----|-------|-----------|
| 7 | Fukushima | 274 | 230 | 232 | | 248 | | 274 | 259 | 257 | 266 | 233 | 233 | 221 | 262 | 272 | 271 | 250 | 253 | 268 | 286 | 276 | 299 | 346 | 5,510 | Fukushima |
| 20 | Nagano | 213 | 202 | 238 | | 259 | | 250 | 246 | 254 | 226 | 246 | 247 | 263 | 268 | 278 | 280 | 308 | 274 | 338 | 323 | 342 | 368 | 341 | 5,764 | Nagano |
| 43 | Kumamoto | 228 | 271 | 264 | | 248 | | 241 | 272 | 250 | 247 | 227 | 250 | 282 | 240 | 255 | 254 | 240 | 283 | 275 | 277 | 254 | 281 | 319 | 5,458 | Kumamoto |
| 24 | Mie | 270 | 255 | 276 | | 259 | | 269 | 289 | 267 | 280 | 250 | 284 | 284 | 310 | 269 | 273 | 265 | 273 | 323 | 309 | 302 | 357 | 318 | 5,982 | Mie |
| 21 | Gifu | 192 | 208 | 232 | | 234 | | 265 | 274 | 249 | 221 | 217 | 263 | 224 | 240 | 225 | 239 | 217 | 273 | 293 | 297 | 285 | 322 | 317 | 5,287 | Gifu |
| 9 | Tochigi | 257 | 245 | 248 | | 239 | | 260 | 218 | 231 | 287 | 232 | 242 | 237 | 247 | 234 | 264 | 246 | 262 | 283 | 287 | 309 | 325 | 308 | 5,461 | Tochigi |
| 33 | Okayama | 200 | 210 | 225 | | 240 | | 289 | 258 | 261 | 271 | 228 | 244 | 242 | 266 | 263 | 228 | 265 | 234 | 285 | 287 | 261 | 298 | 293 | 5,348 | Okayama |
| 46 | Kagoshima | 188 | 195 | 184 | | 218 | | 206 | 194 | 187 | 251 | 192 | 204 | 205 | 205 | 232 | 261 | 224 | 258 | 251 | 268 | 280 | 269 | 280 | 4,752 | Kagoshima |
| 35 | Yamaguchi | 224 | 200 | 206 | | 217 | | 252 | 236 | 199 | 223 | 211 | 227 | 223 | 228 | 192 | 181 | 196 | 195 | 228 | 234 | 209 | 240 | 273 | 4,594 | Yamaguchi |
| 38 | Ehime | 150 | 183 | 175 | | 198 | | 193 | 182 | 176 | 182 | 142 | 148 | 181 | 189 | 189 | 175 | 185 | 183 | 189 | 233 | 182 | 211 | 269 | 3,915 | Ehime |
| 29 | Nara | 155 | 138 | 136 | | 180 | | 213 | 172 | 182 | 231 | 234 | 225 | 213 | 195 | 211 | 197 | 203 | 215 | 213 | 235 | 208 | 228 | 260 | 4,244 | Nara |
| 42 | Nagasaki | 172 | 162 | 159 | | 200 | | 174 | 181 | 176 | 179 | 191 | 204 | 172 | 188 | 189 | 212 | 187 | 211 | 232 | 207 | 229 | 253 | 246 | 4,124 | Nagasaki |
| 47 | Okinawa | 99 | 105 | 139 | | 117 | | 121 | 141 | 133 | 142 | 127 | 126 | 155 | 167 | 158 | 135 | 146 | 190 | 166 | 182 | 207 | 200 | 246 | 3,202 | Okinawa |
| 2 | Aomori | 204 | 160 | 201 | | 178 | | 186 | 209 | 204 | 195 | 200 | 177 | 181 | 200 | 203 | 202 | 163 | 198 | 230 | 211 | 203 | 213 | 237 | 4,155 | Aomori |
| 6 | Yamagata | 156 | 171 | 168 | | 132 | | 163 | 152 | 144 | 159 | 150 | 141 | 151 | 156 | 186 | 168 | 156 | 167 | 184 | 210 | 178 | 184 | 232 | 3,508 | Yamagata |
| 17 | Ishikawa | 167 | 150 | 166 | | 138 | | 156 | 155 | 171 | 131 | 161 | 147 | 168 | 150 | 149 | 160 | 139 | 147 | 156 | 190 | 195 | 169 | 219 | 3,384 | Ishikawa |
| 37 | Kagawa | 170 | 188 | 175 | | 169 | | 188 | 174 | 163 | 160 | 164 | 190 | 151 | 202 | 161 | 151 | 167 | 155 | 187 | 169 | 195 | 191 | 212 | 3,682 | Kagawa |
| 45 | Miyazaki | 163 | 175 | 166 | | 176 | | 164 | 172 | 168 | 173 | 155 | 137 | 165 | 138 | 155 | 155 | 179 | 177 | 184 | 170 | 221 | 215 | 209 | 3,617 | Miyazaki |
| 25 | Shiga | 132 | 138 | 131 | | 138 | | 169 | 184 | 166 | 175 | 163 | 169 | 168 | 194 | 170 | 147 | 176 | 187 | 199 | 195 | 200 | 204 | 202 | 3,607 | Shiga |
| 44 | Oita | 173 | 125 | 148 | | 155 | | 178 | 142 | 173 | 162 | 148 | 159 | 136 | 140 | 171 | 173 | 190 | 181 | 168 | 162 | 199 | 187 | 200 | 3,470 | Oita |
| 16 | Toyama | 149 | 133 | 164 | | 126 | | 185 | 161 | 136 | 127 | 137 | 134 | 174 | 167 | 155 | 180 | 171 | 163 | 210 | 177 | 160 | 166 | 200 | 3,375 | Toyama |
| 41 | Saga | 153 | 115 | 101 | | 118 | | 117 | 126 | 130 | 126 | 116 | 121 | 107 | 124 | 124 | 150 | 156 | 141 | 133 | 215 | 161 | 180 | 195 | 2,909 | Saga |
| 5 | Akita | 146 | 174 | 142 | | 122 | | 153 | 151 | 163 | 157 | 139 | 167 | 176 | 186 | 160 | 156 | 149 | 175 | 146 | 199 | 194 | 196 | 192 | 3,443 | Akita |
| 3 | Iwate | 140 | 158 | 182 | | 165 | | 166 | 152 | 139 | 167 | 151 | 145 | 254 | 185 | 199 | 172 | 154 | 181 | 181 | 173 | 191 | 190 | 190 | 3,635 | Iwate |
| 30 | Wakayama | 124 | 129 | 140 | | 147 | | 168 | 145 | 142 | 156 | 136 | 123 | 135 | 114 | 117 | 139 | 108 | 109 | 110 | 151 | 169 | 143 | 179 | 2,884 | Wakayama |
| 19 | Yamanashi | 66 | 54 | 78 | | 99 | | 115 | 97 | 102 | 105 | 93 | 92 | 92 | 80 | 95 | 107 | 104 | 112 | 107 | 119 | 118 | 108 | 147 | 2,090 | Yamanashi |
| 18 | Fukui | 119 | 104 | 113 | | 98 | | 100 | 112 | 113 | 99 | 99 | 119 | 121 | 113 | 108 | 112 | 93 | 109 | 109 | 161 | 129 | 143 | 145 | 2,419 | Fukui |
| 39 | Kochi | 165 | 158 | 160 | | 167 | | 132 | 134 | 93 | 109 | 111 | 123 | 138 | 130 | 104 | 121 | 110 | 117 | 120 | 112 | 120 | 144 | 127 | 2,695 | Kochi |

| | | | | | | | | | | | | | | | | | | | | | | | | | | |
|----|-----------|--------|--------|--------|--|--------|--|--------|--------|--------|--------|--------|--------|--------|--------|--------|--------|--------|--------|--------|--------|--------|--------|--------|---------|-----------|
| 32 | Shimane | 108 | 101 | 97 | | 113 | | 88 | 88 | 76 | 100 | 84 | 77 | 83 | 100 | 117 | 77 | 93 | 87 | 110 | 116 | 111 | 95 | 127 | 2,048 | Shimane |
| 36 | Tokushima | 109 | 83 | 124 | | 93 | | 120 | 92 | 93 | 95 | 82 | 84 | 80 | 94 | 88 | 91 | 83 | 87 | 112 | 96 | 102 | 131 | 125 | 2,064 | Tokushima |
| 31 | Tottori | 74 | 81 | 87 | | 85 | | 86 | 76 | 74 | 78 | 63 | 70 | 88 | 65 | 70 | 75 | 72 | 63 | 82 | 91 | 74 | 84 | 76 | 1,614 | Tottori |
| | total | 15,432 | 15,301 | 16,164 | | 16,621 | | 17,022 | 16,987 | 16,656 | 16,823 | 15,688 | 16,211 | 16,907 | 17,218 | 16,836 | 17,505 | 17,150 | 17,693 | 18,270 | 19,744 | 19,434 | 20,169 | 22,408 | 366,239 | total |

Data source : <https://anzeninfo.mhlw.go.jp/user/anzen/tok/anst00.htm>

Return to https://www.jisha.or.jp/english/statistics/202211_23.html