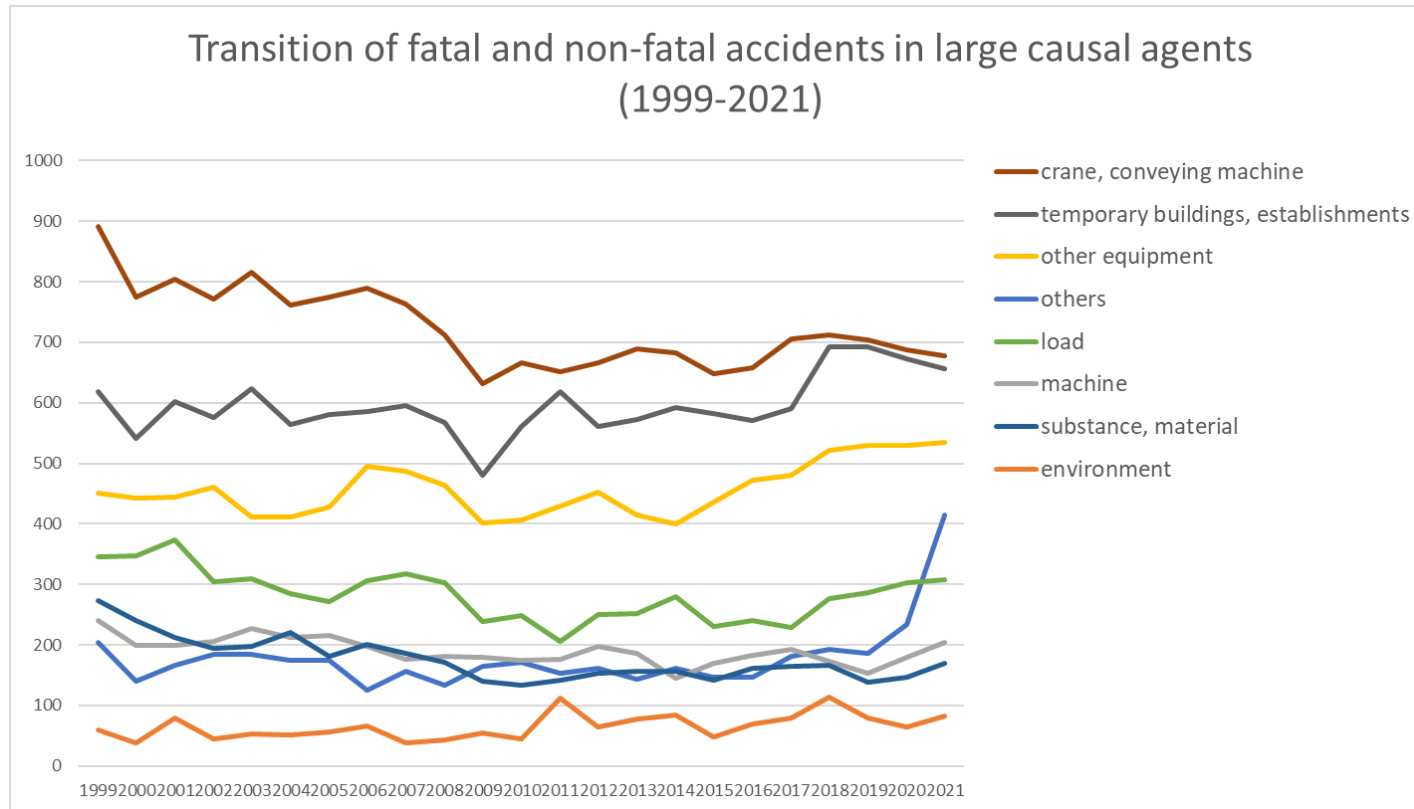
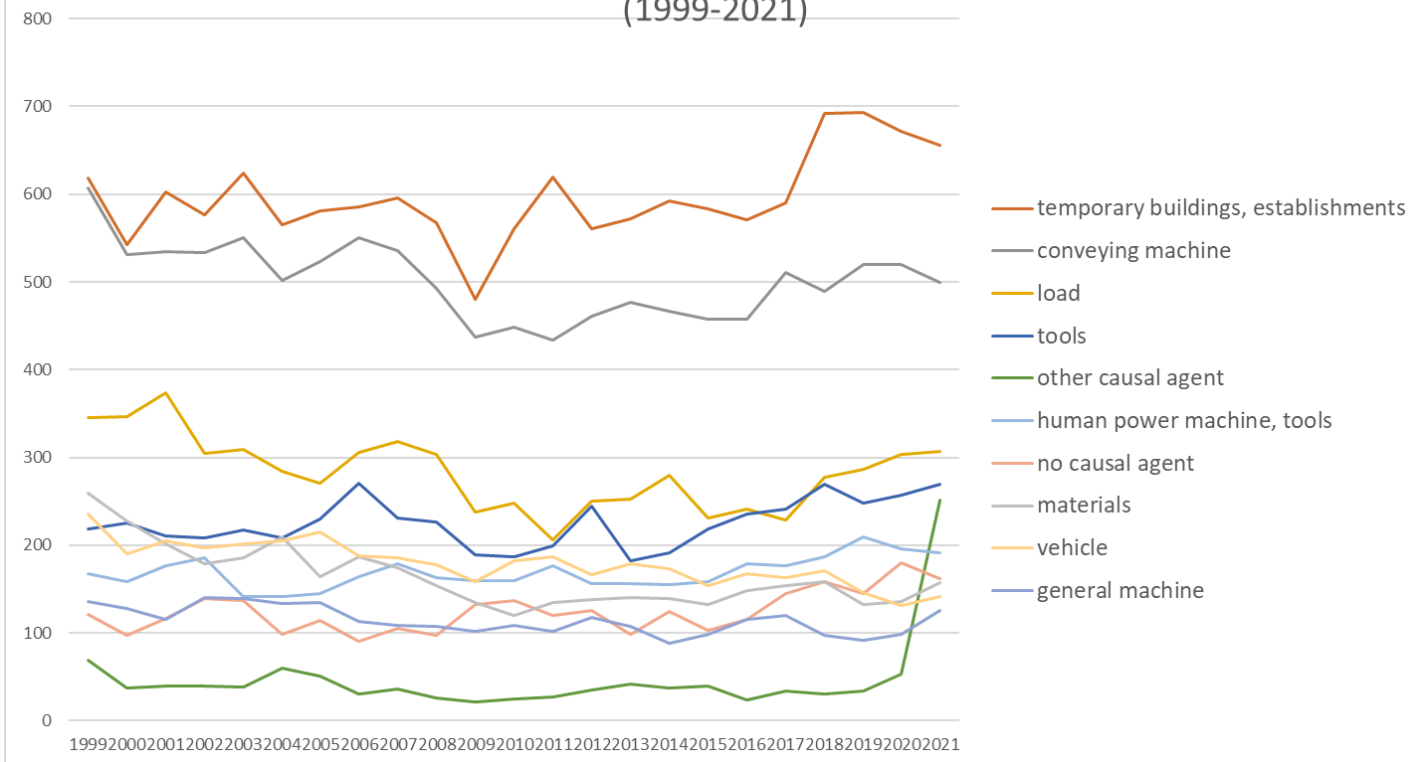


Transition of fatal and non-fatal accidents in each element like as causal agents, type of accidents, etc. in code no. 0801 wholesale (1999-2021)



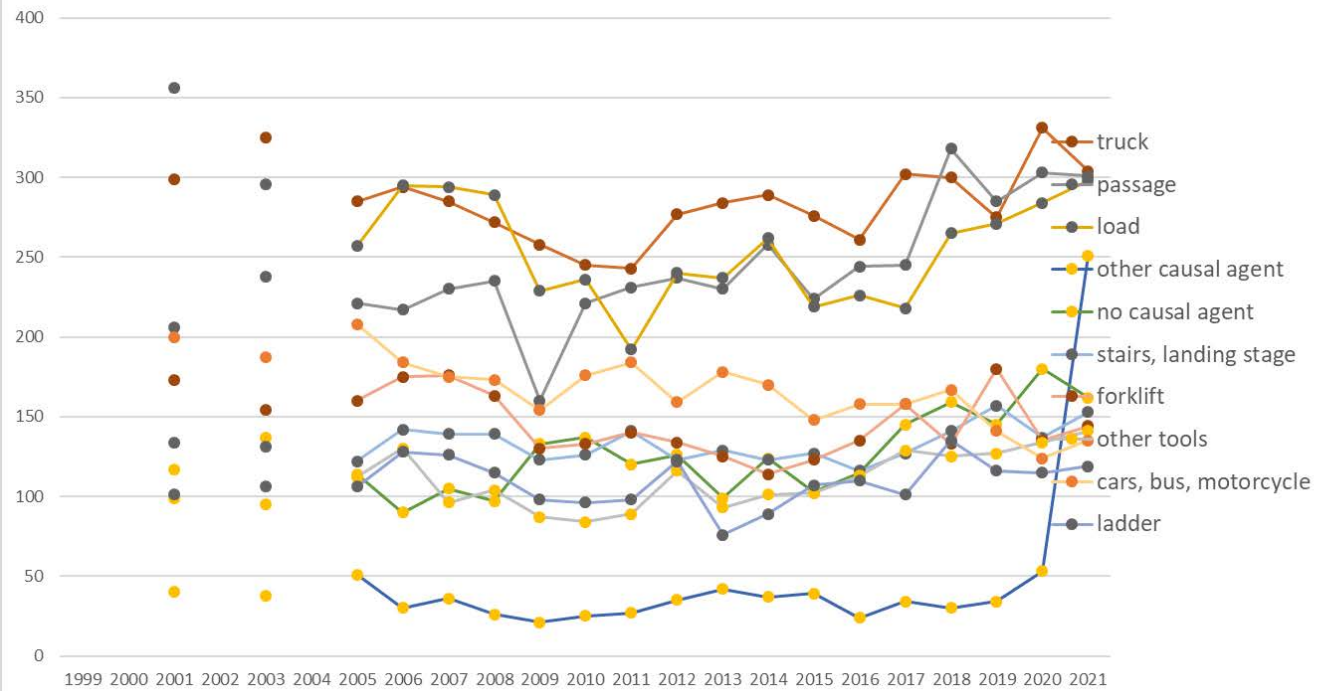
Transition of fatal and non-fatal accidents in large causal agents in code no. 0801 wholesale (1999-2021)

Transition of fatal and non-fatal accidents in top 10 middle causal agents  
(1999-2021)



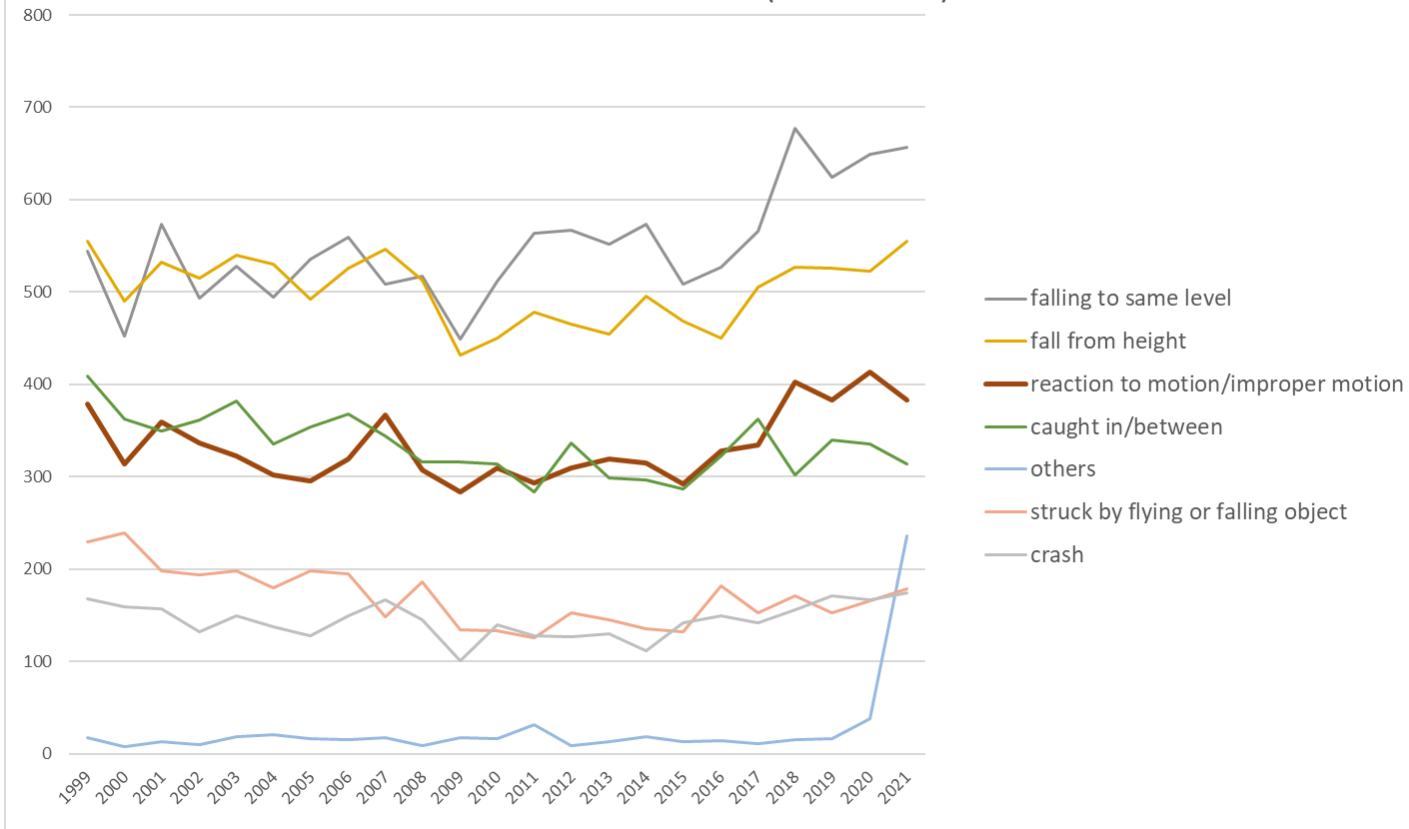
Transition of fatal and non-fatal accidents in middle causal agents in code no. 0801 wholesale (1999-2021)

Transition of fatal and non-fatal accidents in top 10 small causal agents  
(1999-2021)



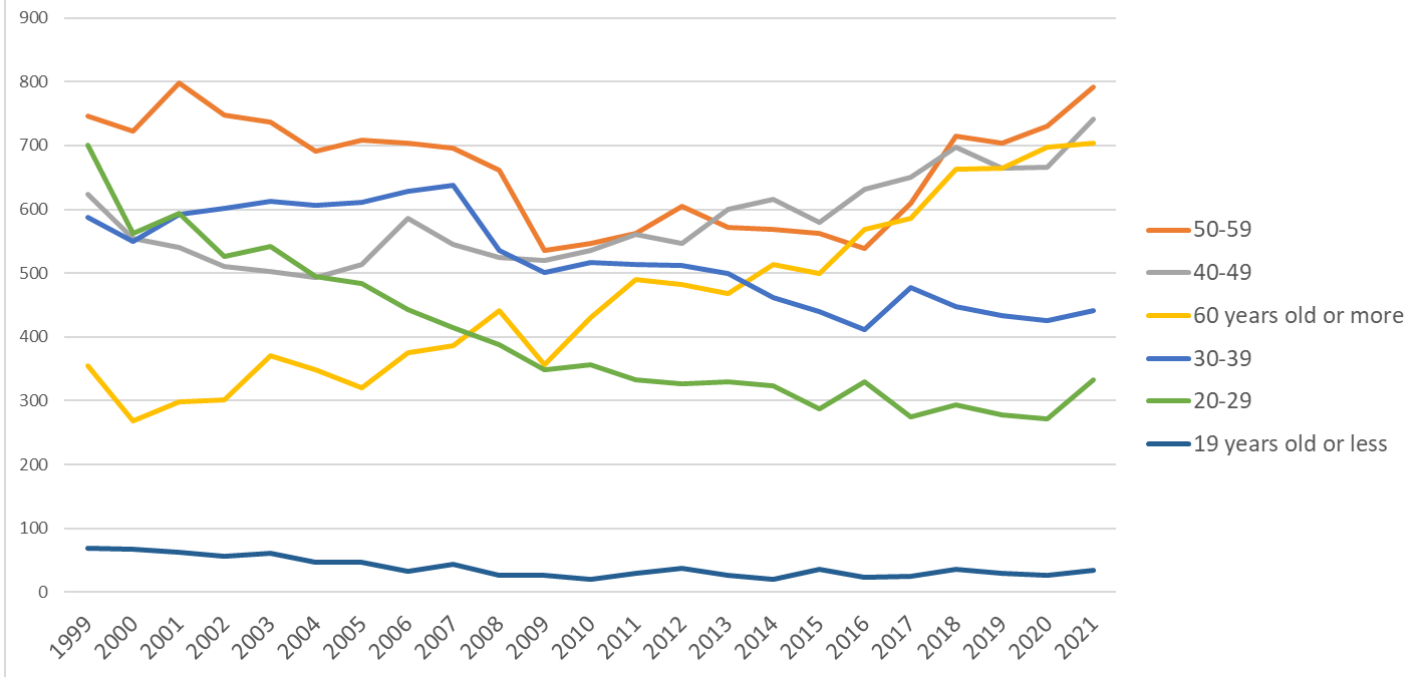
Transition of fatal and non-fatal accidents in small causal agents in code no. 0801 wholesale (1999-2021)

Transition of fatal and non-fatal accidents in top 7 type of accidents  
(1999-2021)



Transition of fatal and non-fatal accidents in type of accidents in code no. 0801 wholesale (1999-2021)

Transition of fatal and non-fatal accidents in workers ages (1999-2021)



Transition of fatal and non-fatal accidents in workers ages in code no. 0801 wholesale (1999-2021)































99	unclassifiable	4	2	12	5	7	7	7	2	13	9	8	8	4		3	1	5	4	3	2	4	1	1	112	unclassifiable
10	drown		1	1					1			1		34			1		1			1		1	42	drown
18	traffic accident (others)	4	4	1		4	2	2	1	3		2		2	3	3		1	2	2	3	2	3		44	traffic accident (others)
15	burst		2	1	1	1	2	2	2		1	1	1		4	1	1	2		3	4	1	1		31	burst
	total	3,081	2,726	2,883	2,743	2,824	2,680	2,683	2,768	2,723	2,576	2,288	2,406	2,490	2,507	2,494	2,503	2,403	2,503	2,623	2,850	2,772	2,818	3,045	61,389	total

Transition of fatal and non-fatal accidents in workers ages in code no. 0801 wholesale (1999-2021)

code	Age	1999	2000	2001	2002	2003	2004	2005	2006	2007	2008	2009	2010	2011	2012	2013	2014	2015	2016	2017	2018	2019	2020	2021	total	Age
5	50-59	746	723	798	748	736	691	708	703	696	661	536	546	563	604	571	569	563	538	609	715	703	731	792	15,250	50-59
4	40-49	624	555	540	510	502	493	514	586	545	524	520	536	561	546	600	615	579	632	651	697	664	666	741	13,401	40-49
6	60 years old or more	355	269	298	302	370	348	321	376	386	441	357	431	490	482	468	513	499	569	586	663	664	697	704	10,589	60 years old or more
3	30-39	587	550	592	601	613	607	611	628	638	536	501	517	514	512	500	462	439	412	478	447	434	426	441	12,046	30-39
2	20-29	700	562	593	526	542	494	483	443	415	388	348	356	333	326	329	324	287	329	274	293	278	272	333	9,228	20-29
1	19 years old or less	69	67	62	56	61	47	46	32	43	26	26	20	29	37	26	20	36	23	25	35	29	26	34	875	19 years old or less
	total	3,081	2,726	2,883	2,743	2,824	2,680	2,683	2,768	2,723	2,576	2,288	2,406	2,490	2,507	2,494	2,503	2,403	2,503	2,623	2,850	2,772	2,818	3,045	61,389	total

Transition of fatal and non-fatal accidents in workers scales in code no. 0801 wholesale (1999-2021)

code	Workers scale	1999	2000	2001	2002	2003	2004	2005	2006	2007	2008	2009	2010	2011	2012	2013	2014	2015	2016	2017	2018	2019	2020	2021	total	Workers scale
2	10-29	1,028	951	997	961	957	919	896	933	877	808	762	786	809	805	842	826	828	825	862	923	849	939	1,063	20,446	10-29
1	9 workers or less	899	774	816	743	861	792	741	746	688	675	594	647	628	664	623	570	527	611	600	626	592	606	635	15,658	9 workers or less
3	30-49	416	386	414	385	393	380	399	398	435	409	343	344	367	357	361	403	359	390	431	424	463	452	494	9,203	30-49
5	100-299	270	218	244	255	236	192	230	245	279	251	210	218	259	247	239	267	245	244	297	339	301	296	359	5,941	100-299
4	50-99	385	346	348	330	308	330	330	353	347	339	282	311	314	305	305	321	339	314	329	375	414	386	348	7,759	50-99

6	300 workers or more	83	51	64	69	69	67	87	93	97	94	97	100	113	129	124	116	105	119	104	163	153	139	146	2,382	300 workers or more
	total	3,081	2,726	2,883	2,743	2,824	2,680	2,683	2,768	2,723	2,576	2,288	2,406	2,490	2,507	2,494	2,503	2,403	2,503	2,623	2,850	2,772	2,818	3,045	61,389	total

Transition of fatal and non-fatal accidents in months in code no. 0801 wholesale (1999-2021)

code	Month	1999	2000	2001	2002	2003	2004	2005	2006	2007	2008	2009	2010	2011	2012	2013	2014	2015	2016	2017	2018	2019	2020	2021	total	Month
8	August	245	237	236	231	239	228	241	237	254	199	172	197	215	199	192	226	215	213	213	240	230	250	328	5,237	August
7	July	277	242	269	253	243	295	254	233	220	245	203	218	222	189	207	204	219	204	210	218	246	241	280	5,392	July
1	January	247	213	273	217	270	224	270	235	210	224	193	179	217	226	246	220	207	210	234	261	220	237	280	5,313	January
12	December	265	199	225	210	231	207	226	237	218	182	180	175	225	199	205	227	181	237	219	228	239	267	254	5,036	December
9	September	276	232	236	236	224	215	197	223	204	186	173	196	218	207	174	206	203	213	225	254	221	236	254	5,009	September
10	October	246	222	243	215	229	212	204	246	257	212	194	218	178	209	224	196	198	189	231	248	222	223	251	5,067	October
6	June	283	234	258	229	259	210	220	214	234	215	223	233	200	211	195	197	220	212	207	230	237	262	246	5,229	June
11	November	204	214	213	216	206	211	210	231	211	172	164	160	181	186	203	183	169	190	194	226	227	228	240	4,639	November
5	May	264	234	256	239	225	204	189	233	238	224	193	189	179	210	197	184	206	212	210	220	236	199	230	4,971	May
3	March	269	251	246	263	243	236	248	231	264	236	192	211	260	213	219	223	218	204	256	246	230	250	228	5,437	March
2	February	241	233	217	208	233	201	220	236	200	259	211	219	205	240	213	247	192	197	209	255	246	227	228	5,137	February
4	April	264	215	211	226	222	237	204	212	213	222	190	211	190	218	219	190	175	222	215	224	218	198	226	4,922	April
	total	3,081	2,726	2,883	2,743	2,824	2,680	2,683	2,768	2,723	2,576	2,288	2,406	2,490	2,507	2,494	2,503	2,403	2,503	2,623	2,850	2,772	2,818	3,045	61,389	total

Transition of fatal and non-fatal accidents in prefectures in code no. 0801 wholesale (1999-2021)

code	Prefecture	1999	2000	2001	2002	2003	2004	2005	2006	2007	2008	2009	2010	2011	2012	2013	2014	2015	2016	2017	2018	2019	2020	2021	total	Prefecture
13	Tokyo	300	247	271		265		241	244	278	260	181	211	249	277	272	255	226	197	211	241	261	225	316	5,228	Tokyo
27	Osaka	305	236	265		317		236	266	278	242	258	246	210	248	213	217	215	261	260	281	263	267	298	5,382	Osaka
23	Aichi	216	203	191		136		144	165	155	193	139	150	142	145	137	185	130	125	151	181	174	187	173	3,422	Aichi

14	Kanagawa	122	86	136		112		113	129	107	115	94	120	116	139	120	108	145	133	122	150	143	129	158	2,597	Kanagawa
40	Fukuoka	178	159	142		155		123	127	108	117	126	120	123	144	106	133	143	147	133	154	152	118	154	2,862	Fukuoka
1	Hokkaido	121	91	116		120		115	107	99	83	73	84	94	88	106	123	95	110	113	109	107	130	143	2,227	Hokkaido
11	Saitama	98	109	104		102		131	117	122	101	121	128	134	115	123	106	124	117	147	143	142	139	139	2,562	Saitama
28	Hyogo	111	102	82		121		96	94	83	90	77	88	82	80	79	87	83	98	87	107	100	127	121	1,995	Hyogo
22	Shizuoka	103	99	69		92		71	87	94	69	75	64	83	68	68	80	81	80	102	95	85	68	103	1,736	Shizuoka
12	Chiba	95	92	111		99		83	81	113	109	99	81	86	90	93	85	80	86	100	114	96	108	97	1,998	Chiba
34	Hiroshima	89	74	74		76		91	72	76	56	58	74	62	64	78	68	55	65	63	73	63	72	75	1,478	Hiroshima
4	Miyagi	61	50	62		52		62	61	55	48	43	44	110	57	67	56	57	76	53	86	71	64	71	1,306	Miyagi
15	Niigata	62	68	72		56		71	58	57	48	46	48	59	50	66	50	63	53	51	66	70	66	67	1,247	Niigata
10	Gunma	37	60	67		64		51	54	52	56	38	56	39	31	30	48	37	36	50	40	33	57	55	991	Gunma
26	Kyoto	62	71	62		82		90	74	70	77	57	49	70	68	59	47	50	60	49	78	73	67	54	1,369	Kyoto
8	Ibaraki	75	61	51		46		36	59	52	52	44	63	44	47	39	36	43	55	49	54	58	56	51	1,071	Ibaraki
47	Okinawa	38	30	43		35		36	38	45	45	29	32	33	36	47	33	32	40	46	34	39	42	51	804	Okinawa
21	Gifu	48	44	55		36		50	58	50	32	24	39	34	28	27	31	30	38	34	50	31	59	45	843	Gifu
33	Okayama	35	29	46		42		41	41	51	40	30	41	36	34	23	33	33	26	36	34	44	43	44	782	Okayama
2	Aomori	54	44	49		33		42	48	36	35	44	28	32	30	42	38	43	39	43	45	34	41	43	843	Aomori
38	Ehime	45	49	45		49		36	54	37	43	30	25	31	39	28	26	32	35	36	46	36	39	43	804	Ehime
43	Kumamoto	49	37	46		36		33	45	37	43	29	29	35	31	39	31	28	38	30	37	27	33	43	756	Kumamoto
41	Saga	28	20	23		22		21	18	25	21	18	21	14	19	27	25	19	21	27	29	25	32	43	498	Saga
35	Yamaguchi	52	38	41		46		51	40	32	31	29	23	36	35	27	24	19	14	36	33	27	32	42	708	Yamaguchi
9	Tochigi	35	29	33		30		36	34	41	33	33	27	24	42	33	34	26	30	38	29	37	34	42	700	Tochigi
30	Wakayama	28	23	28		32		31	34	28	32	22	17	17	24	17	20	21	14	12	23	19	28	42	512	Wakayama
46	Kagoshima	45	42	43		30		26	43	40	32	35	41	31	35	42	41	28	37	39	34	53	41	36	794	Kagoshima
20	Nagano	42	43	49		49		51	45	31	35	40	32	43	20	38	40	38	29	36	35	40	42	35	813	Nagano

17	Ishikawa	40	42	37		26		40	43	45	33	35	31	33	26	30	43	18	27	25	42	43	35	34	728	Ishikawa
42	Nagasaki	40	28	25		35		32	39	27	45	32	41	34	38	38	44	30	34	27	28	35	27	34	713	Nagasaki
7	Fukushima	40	38	36		32		40	34	41	37	25	30	25	38	47	34	44	43	40	32	44	33	33	766	Fukushima
45	Miyazaki	39	31	37		30		27	29	24	32	28	16	24	27	33	25	28	29	33	15	29	18	33	587	Miyazaki
24	Mie	46	43	35		47		32	45	39	37	28	36	33	35	39	43	38	30	53	30	37	38	32	796	Mie
37	Kagawa	53	38	48		44		43	34	38	23	28	38	31	31	26	18	32	28	30	20	32	36	31	702	Kagawa
16	Toyama	27	22	40		22		27	28	28	15	16	18	27	23	23	28	26	24	35	35	20	29	28	541	Toyama
29	Nara	13	11	12		17		30	22	23	15	20	24	23	23	24	18	17	26	14	22	10	26	27	417	Nara
36	Tokushima	28	23	25		17		15	21	14	15	14	16	14	11	16	15	14	20	22	11	15	24	26	376	Tokushima
44	Oita	28	20	21		30		32	18	26	28	27	19	26	15	20	20	29	16	23	26	20	21	25	490	Oita
6	Yamagata	31	19	31		22		16	22	23	21	14	19	12	18	22	24	23	18	31	22	29	35	23	475	Yamagata
3	Iwate	23	27	31		19		25	11	19	24	18	18	32	34	18	25	25	28	14	24	21	27	21	484	Iwate
39	Kochi	21	21	20		25		27	23	22	17	21	23	24	16	24	12	15	15	16	17	22	20	20	421	Kochi
19	Yamanashi	10	13	17		11		20	11	17	9	16	14	14	7	15	17	14	15	25	16	17	19	20	317	Yamanashi
25	Shiga	13	14	11		20		10	23	15	14	15	10	10	18	13	23	13	15	17	20	29	20	19	342	Shiga
18	Fukui	30	32	20		35		20	25	26	24	14	24	17	16	17	17	20	17	11	30	21	20	17	453	Fukui
5	Akita	16	29	24		26		20	14	16	16	18	14	22	23	17	22	16	29	25	27	21	17	17	429	Akita
32	Shimane	25	15	20		15		10	14	16	19	12	17	6	10	16	7	10	15	16	18	12	12	12	297	Shimane
31	Tottori	24	24	17		16		9	19	12	14	15	17	14	14	10	8	15	14	12	14	12	15	9	304	Tottori
	total	3,081	2,726	2,883		2,824		2,683	2,768	2,723	2,576	2,288	2,406	2,490	2,507	2,494	2,503	2,403	2,503	2,623	2,850	2,772	2,818	3,045	55,966	total

Data source : <https://anzeninfo.mhlw.go.jp/user/anzen/tok/anst00.htm>

Return to [https://www.jisha.or.jp/english/statistics/202211\\_23.html](https://www.jisha.or.jp/english/statistics/202211_23.html)