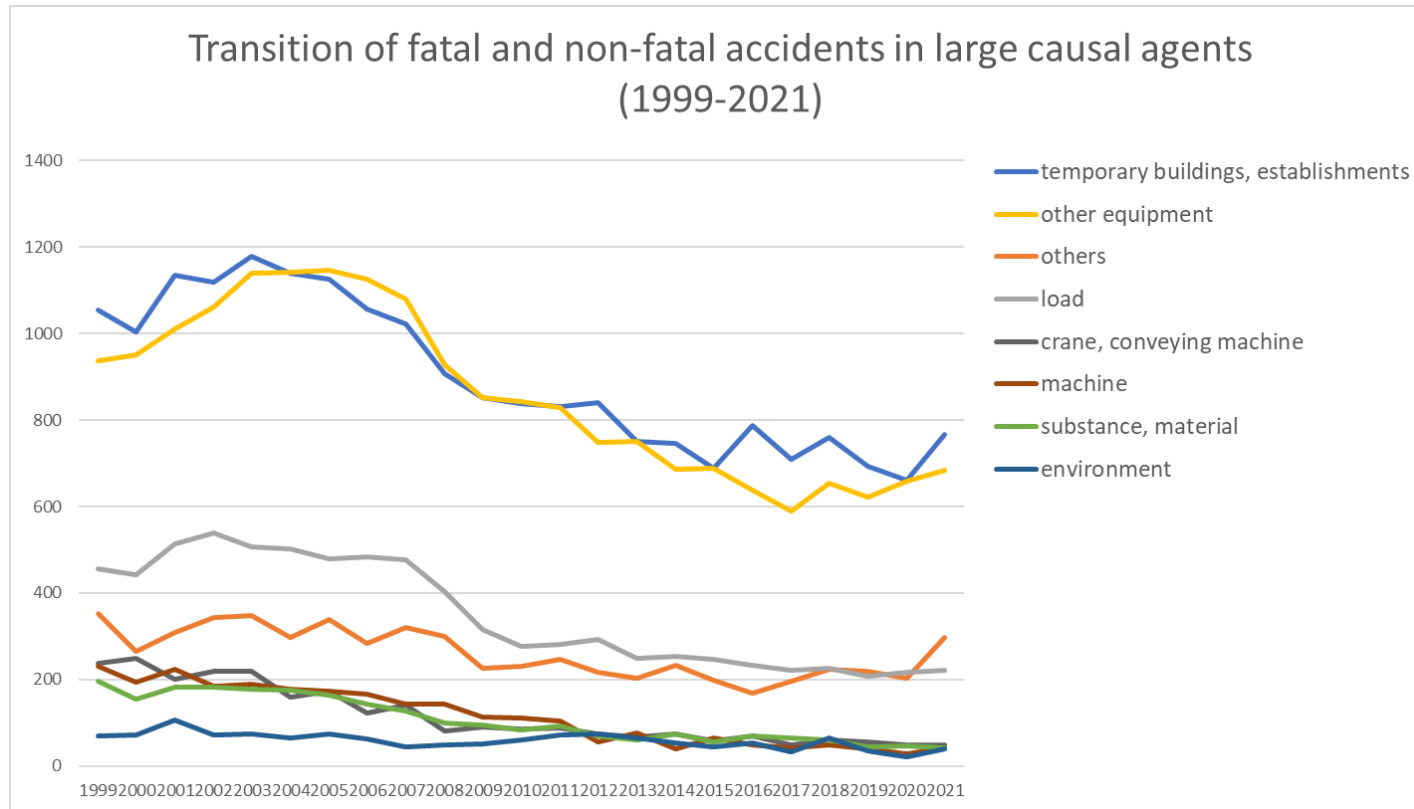
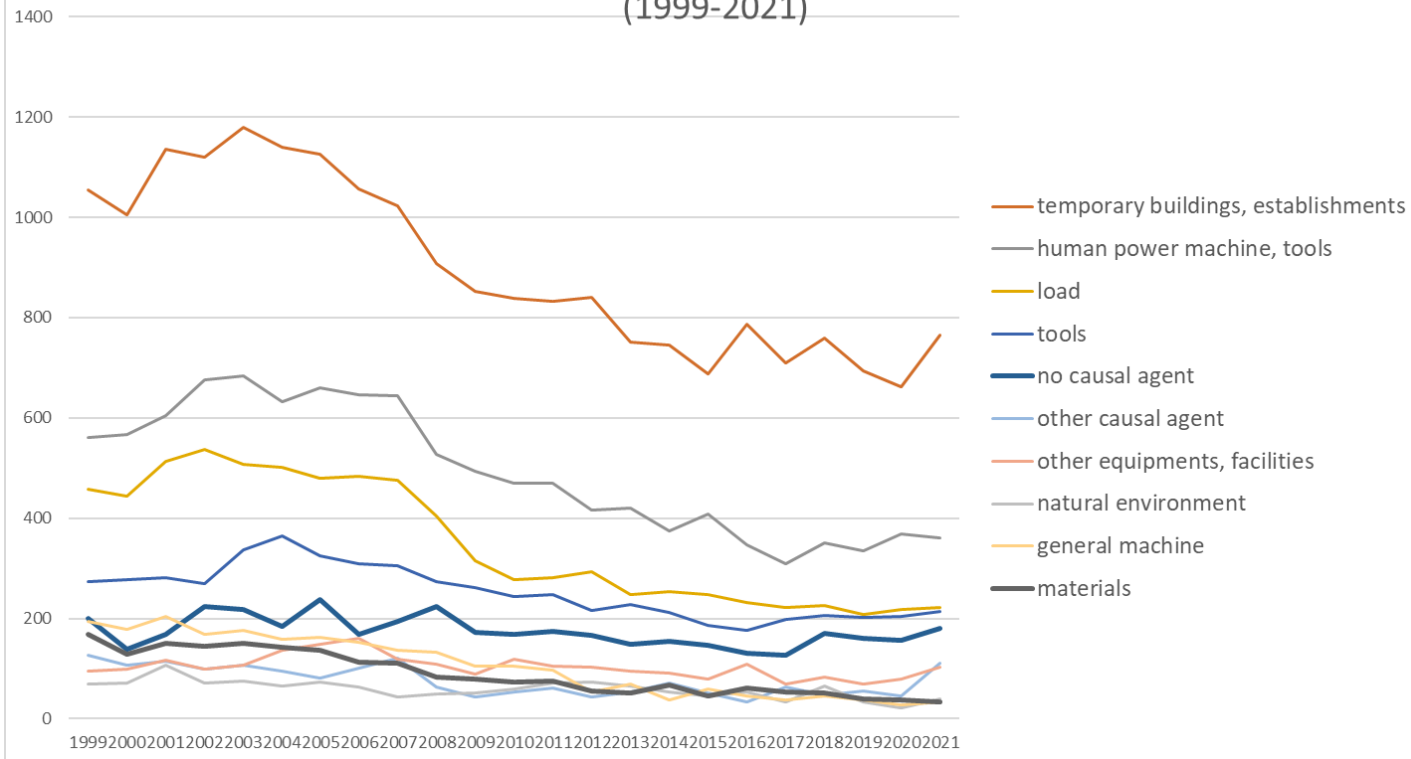


Transition of fatal and non-fatal accidents in each element like as causal agents, type of accidents, etc. in code no. 080201 all kinds of retail (1999-2021)



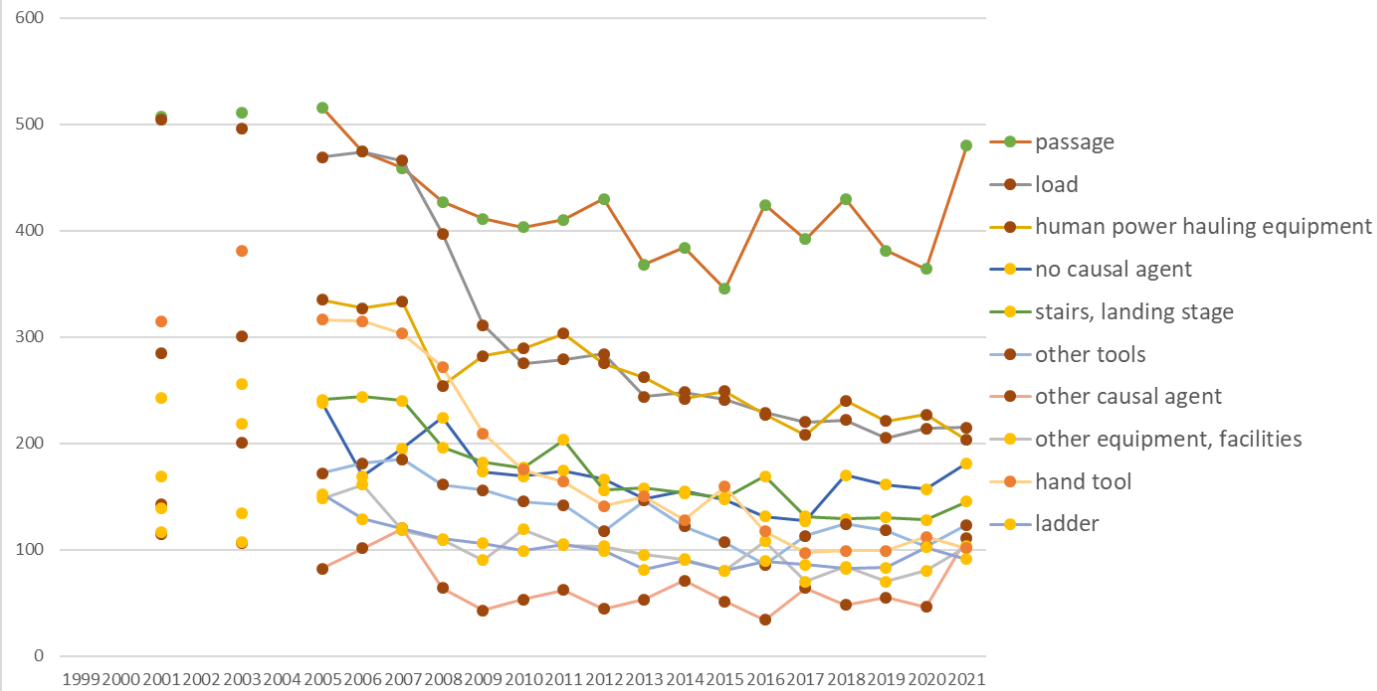
Transition of fatal and non-fatal accidents in large causal agents in code no. 080201 all kinds of retail (1999-2021)

Transition of fatal and non-fatal accidents in top 10 middle causal agents  
(1999-2021)



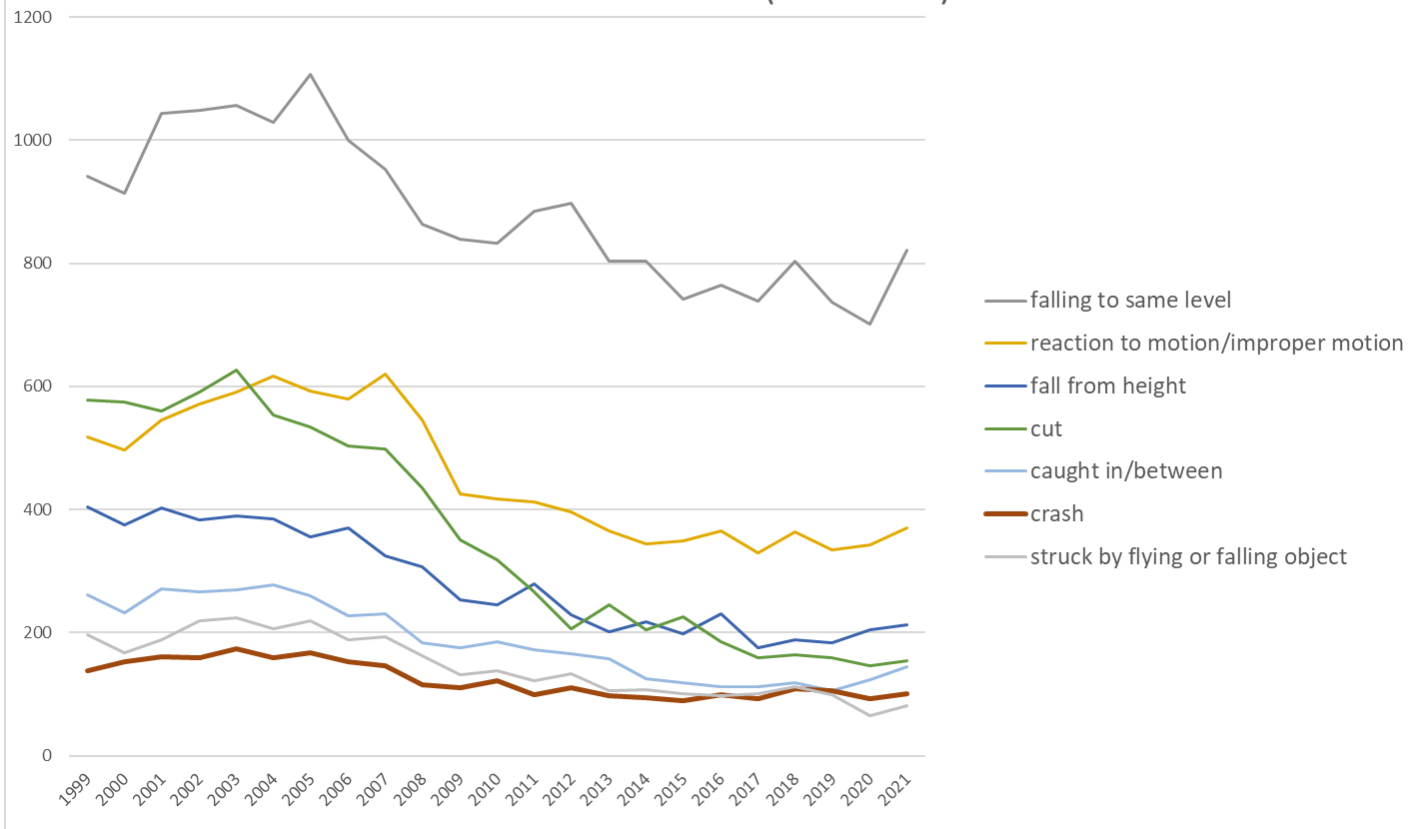
Transition of fatal and non-fatal accidents in middle causal agents in code no. 080201 all kinds of retail (1999-2021)

Transition of fatal and non-fatal accidents in top 10 small causal agents  
(1999-2021)



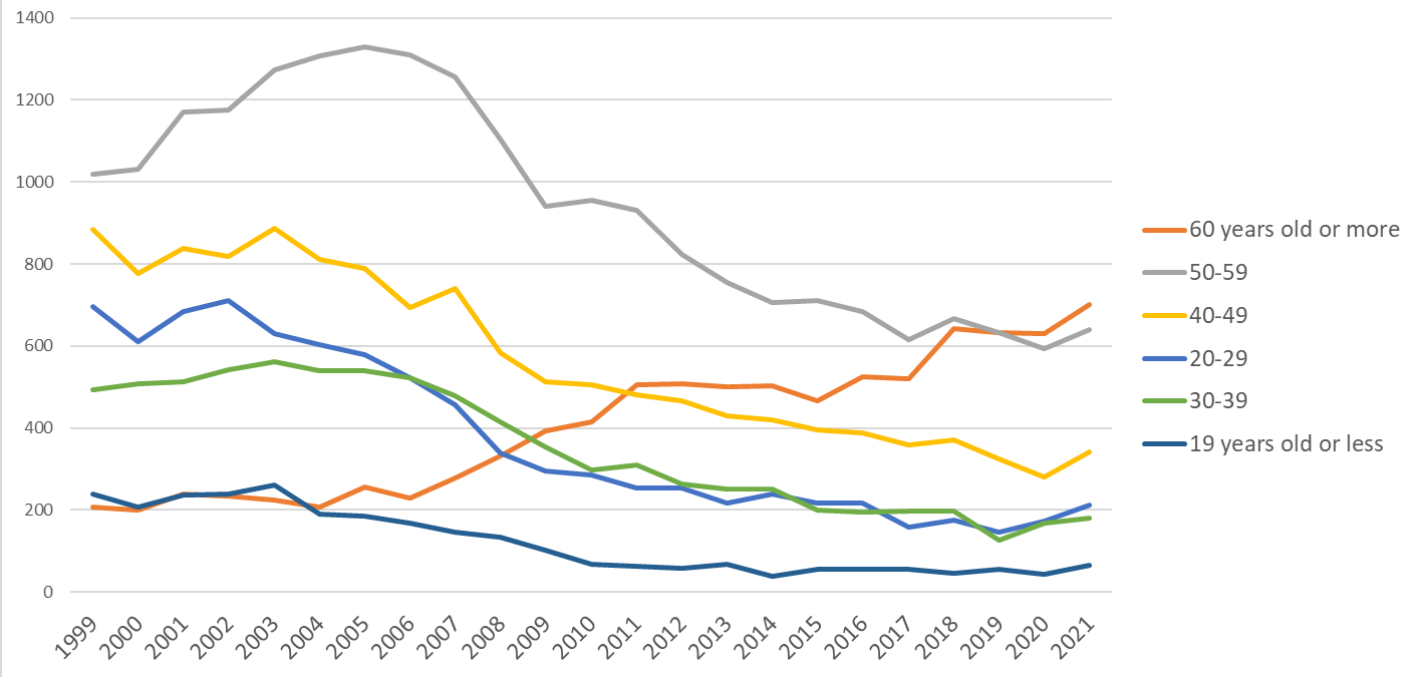
Transition of fatal and non-fatal accidents in small causal agents in code no. 080201 all kinds of retail (1999-2021)

Transition of fatal and non-fatal accidents in top 7 type of accidents  
(1999-2021)



Transition of fatal and non-fatal accidents in type of accidents in code no. 080201 all kinds of retail (1999-2021)

Transition of fatal and non-fatal accidents in workers ages (1999-2021)



Transition of fatal and non-fatal accidents in workers ages in code no. 080201 all kinds of retail (1999-2021)





































45	Miyazaki	35	31	34		33		29	19	24	19	19	18	14	15	16	17	15	19	11	11	28	14	21	442	Miyazaki
39	Kochi	61	43	40		32		43	49	32	38	42	39	29	21	30	42	27	34	35	28	30	32	20	747	Kochi
38	Ehime	16	25	14		27		21	30	29	16	14	6	14	10	14	6	9	9	12	13	6	16	16	323	Ehime
20	Nagano	52	40	43		79		57	62	59	58	44	44	43	39	23	32	43	24	17	19	21	23	15	837	Nagano
30	Wakayama	35	39	39		28		25	21	22	19	14	16	23	24	15	15	13	9	12	25	18	18	15	445	Wakayama
19	Yamanashi	31	21	20		38		45	42	31	34	27	21	21	16	31	21	22	27	17	11	11	12	14	513	Yamanashi
42	Nagasaki	74	51	56		35		18	36	25	24	18	18	16	15	14	10	5	17	15	19	17	13	14	510	Nagasaki
36	Tokushima	31	17	41		30		41	29	35	32	27	23	12	12	18	12	11	9	10	12	14	18	14	448	Tokushima
5	Akita	32	43	25		33		30	44	51	51	24	18	21	24	17	13	17	22	11	22	15	19	12	544	Akita
18	Fukui	21	14	13		11		18	30	19	12	9	13	16	12	9	15	14	18	14	14	15	15	12	314	Fukui
32	Shimane	15	13	19		17		15	10	22	14	13	7	8	8	13	11	10	8	13	13	21	12	12	274	Shimane
16	Toyama	11	29	28		29		31	15	10	7	13	15	29	13	12	7	5	16	6	10	10	10	9	315	Toyama
31	Tottori	5	6	12		20		8	13	11	4	8	8	9	5	8	6	6	10	10	8	6	6	8	177	Tottori
33	Okayama	38	41	30		51		46	49	30	36	23	19	11	13	16	6	20	12	17	15	13	12	7	505	Okayama
41	Saga	43	30	31		27		16	26	27	33	18	22	29	26	14	20	23	19	11	22	11	13	7	468	Saga
35	Yamaguchi	30	35	37		23		40	24	24	29	21	38	24	11	8	10	12	10	10	14	13	15	7	435	Yamaguchi
2	Aomori	37	20	23		27		15	13	18	14	16	10	10	9	8	13	7	5	8	9	8	5	7	282	Aomori
44	Oita	23	13	27		30		17	26	26	38	29	14	10	7	3	7	9	13	9	2	5	5	4	317	Oita
3	Iwate	24	29	38		49		28	24	14	17	18	14	18	12	7	7	2	10	6	3	5	10	3	338	Iwate
	total	3,538	3,333	3,681		3,837		3,675	3,445	3,355	2,912	2,596	2,527	2,543	2,373	2,222	2,160	2,046	2,067	1,907	2,097	1,916	1,887	2,142	56,259	total

Data source : <https://anzeninfo.mhlw.go.jp/user/anzen/tok/anst00.htm>

Return to [https://www.jisha.or.jp/english/statistics/202211\\_23.html](https://www.jisha.or.jp/english/statistics/202211_23.html)