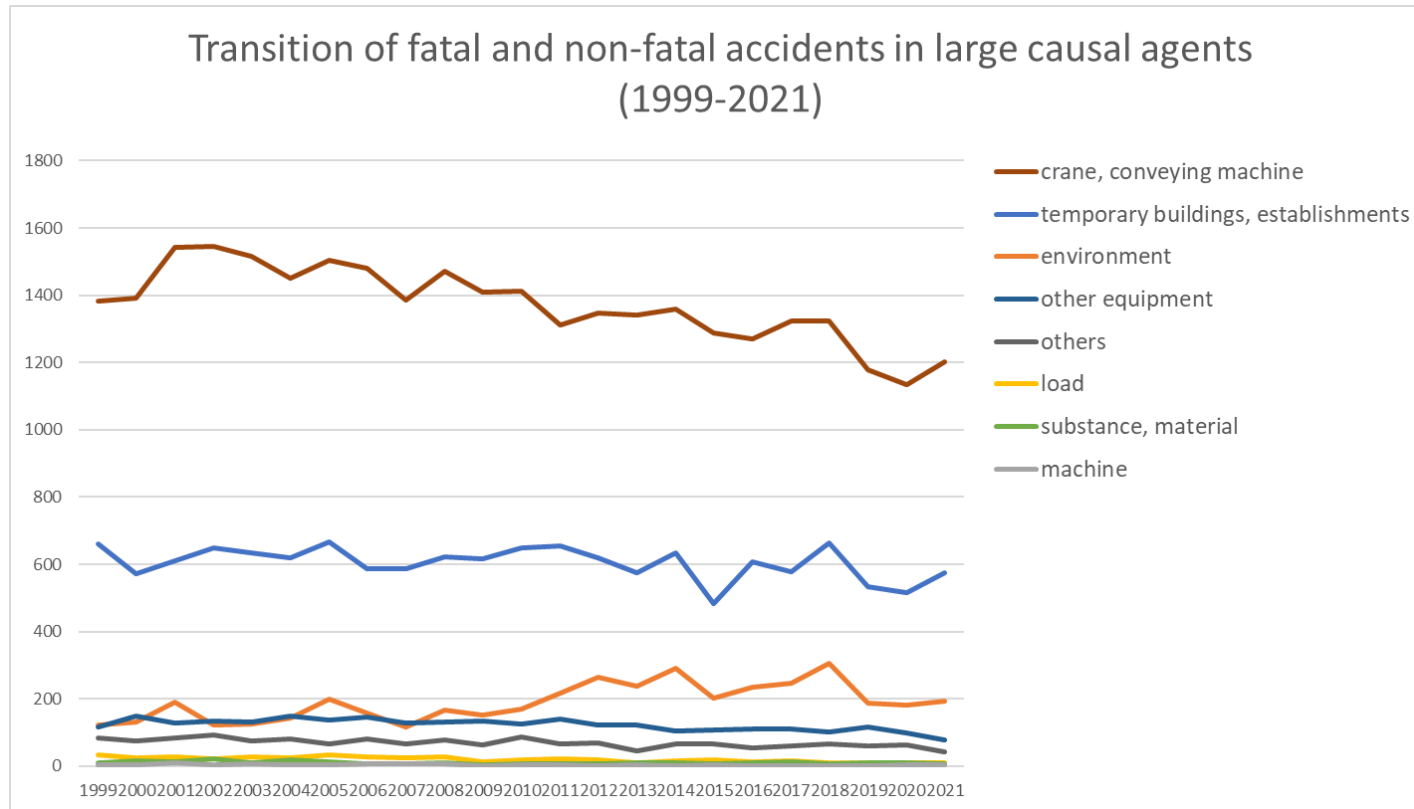
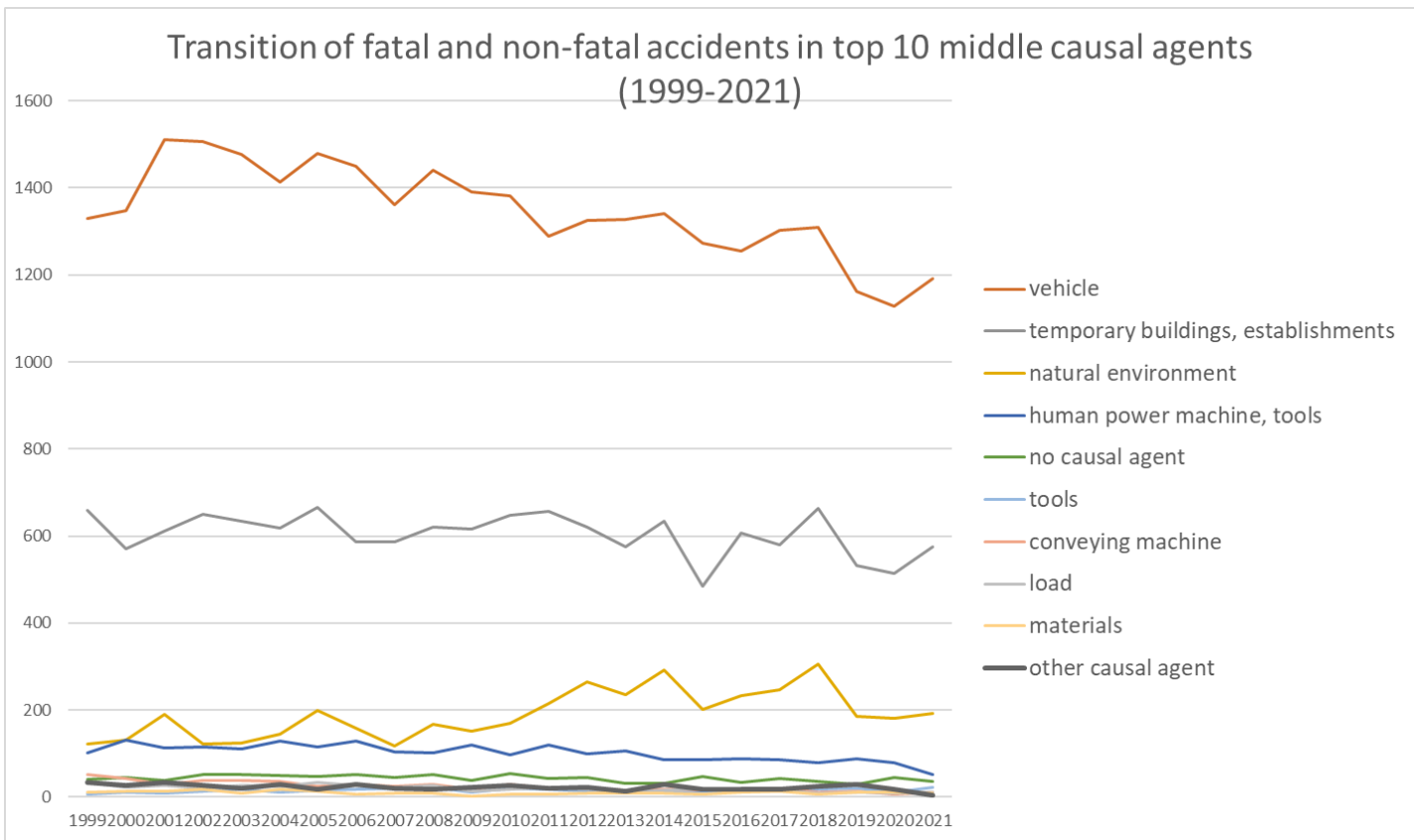


Transition of fatal and non-fatal accidents in each element like as causal agents, type of accidents, etc. in code no. 080205 newspaper retail (1999-2021)

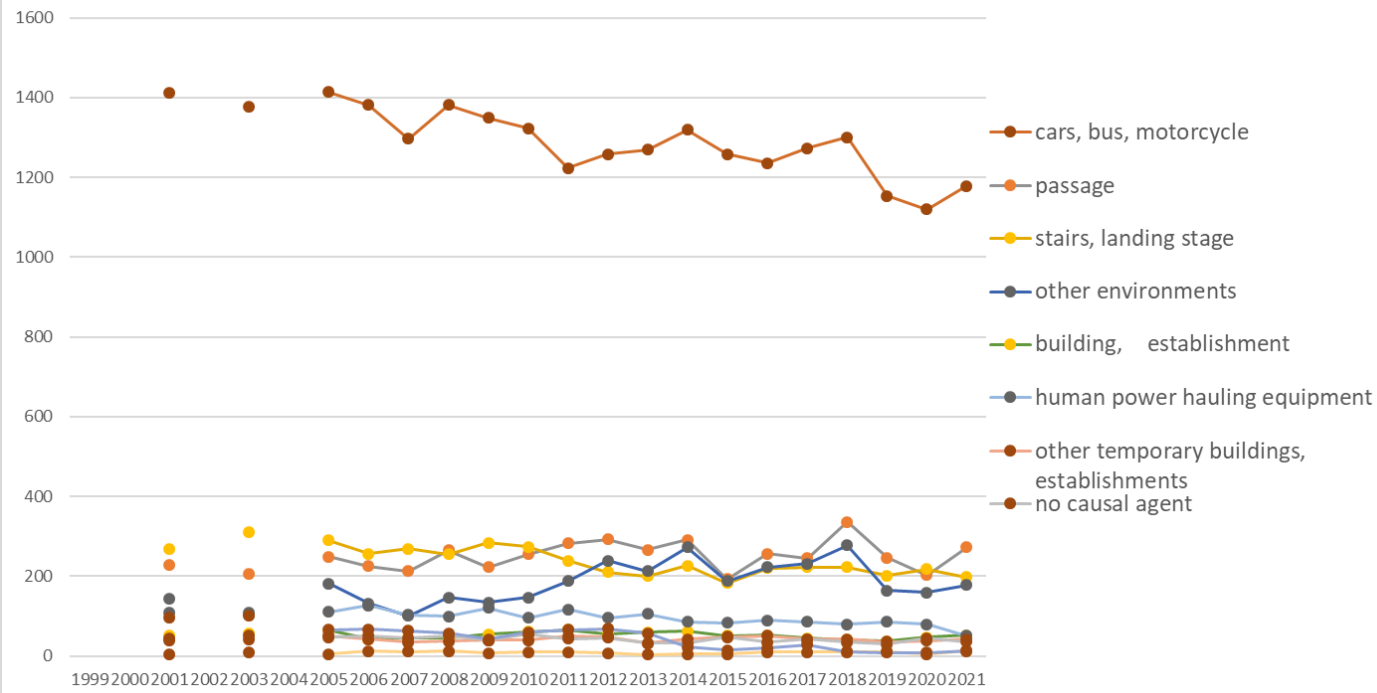


Transition of fatal and non-fatal accidents in large causal agents in code no. 080205 newspaper retail (1999-2021)



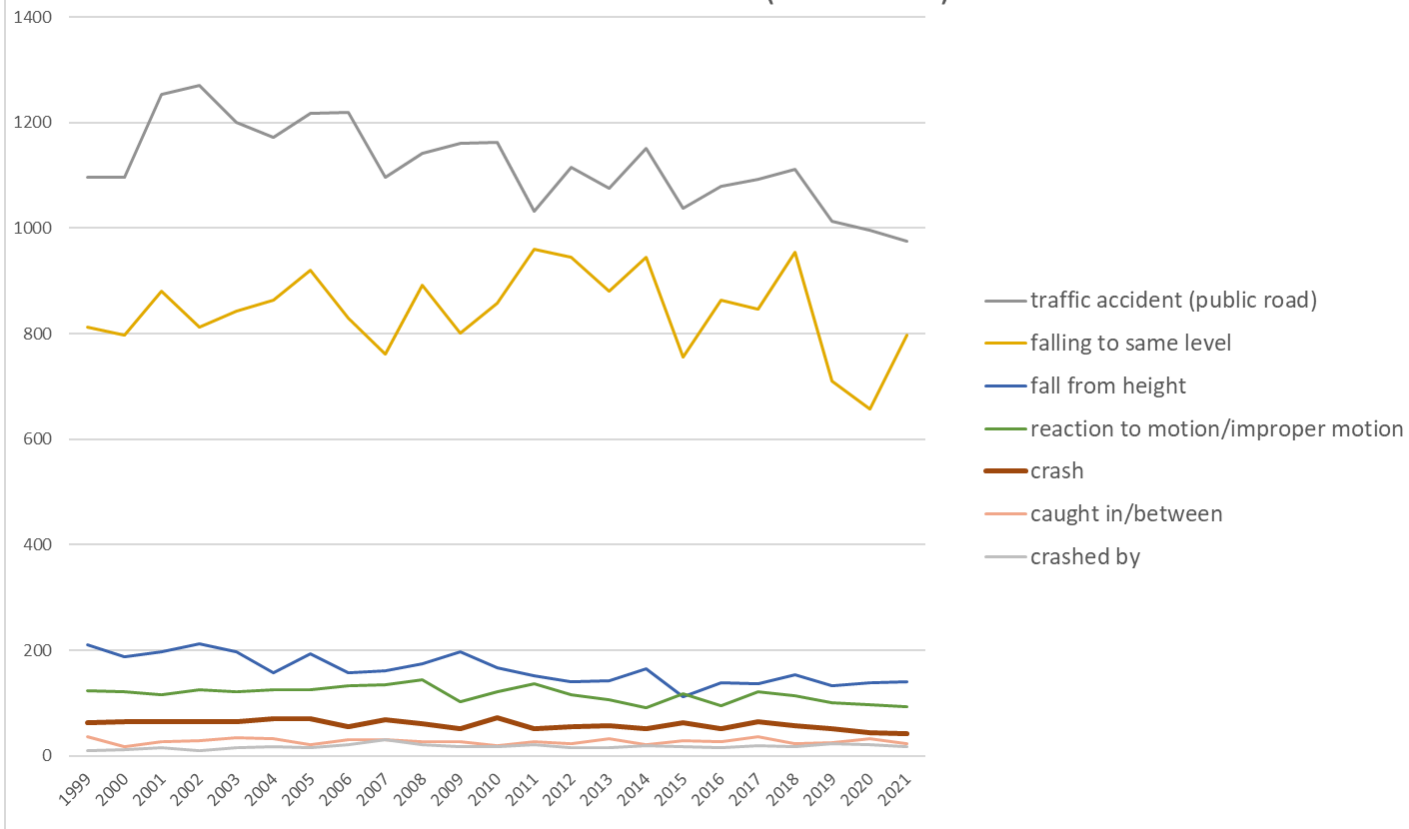
Transition of fatal and non-fatal accidents in middle causal agents in code no. 080205 newspaper retail (1999-2021)

Transition of fatal and non-fatal accidents in top 10 small causal agents (1999-2021)



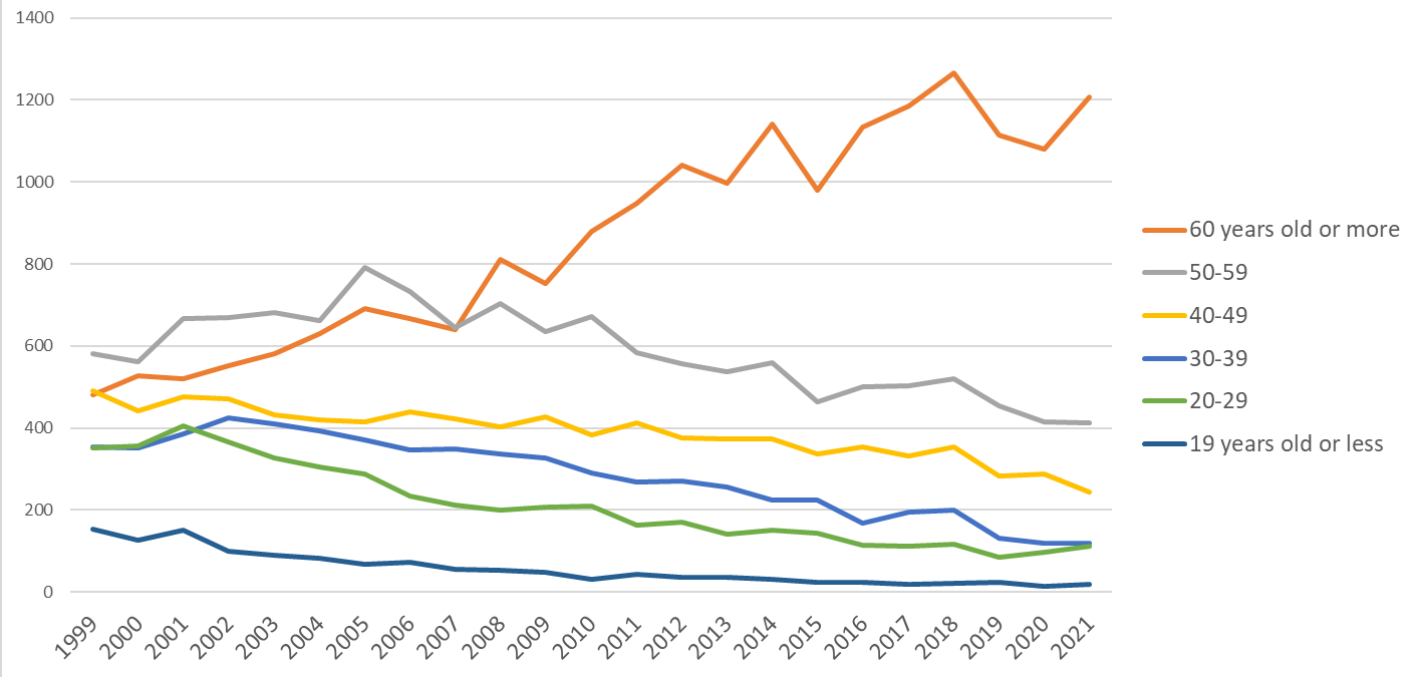
Transition of fatal and non-fatal accidents in small causal agents in code no. 080205 newspaper retail (1999-2021)

Transition of fatal and non-fatal accidents in top 7 type of accidents
(1999-2021)



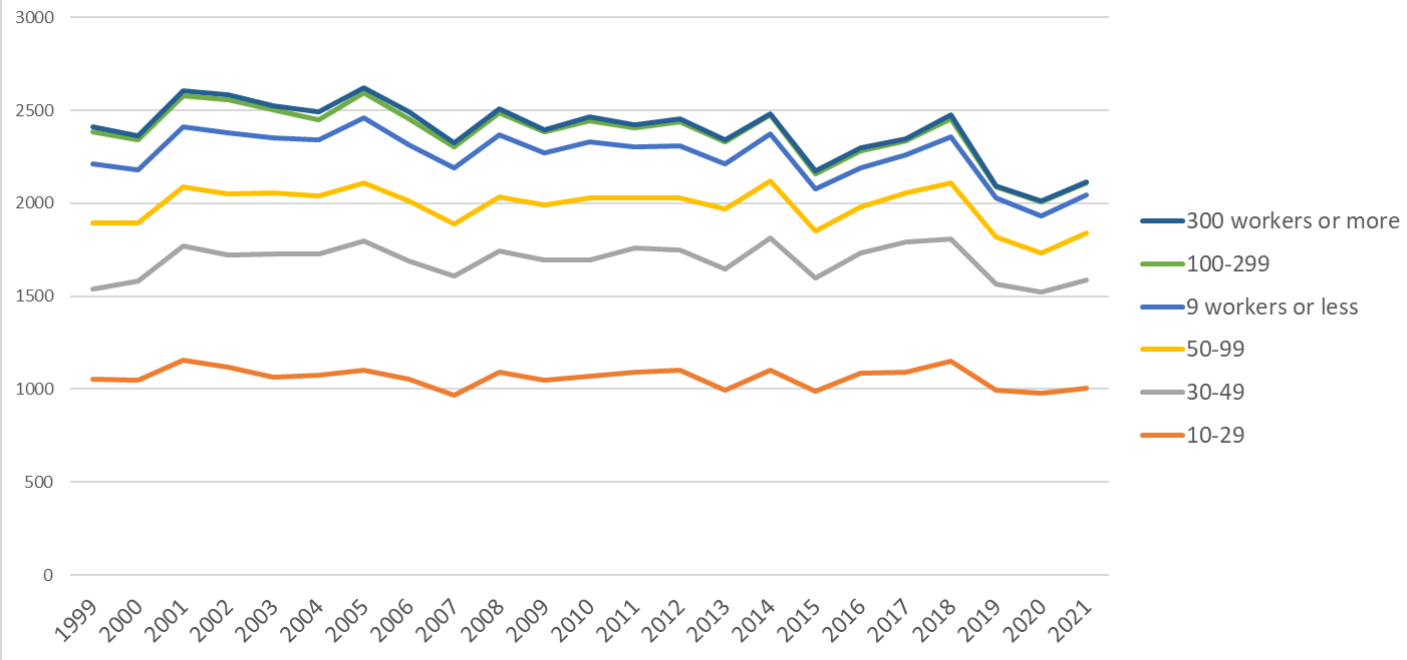
Transition of fatal and non-fatal accidents in type of accidents in code no. 080205 newspaper retail (1999-2021)

Transition of fatal and non-fatal accidents in workers ages (1999-2021)



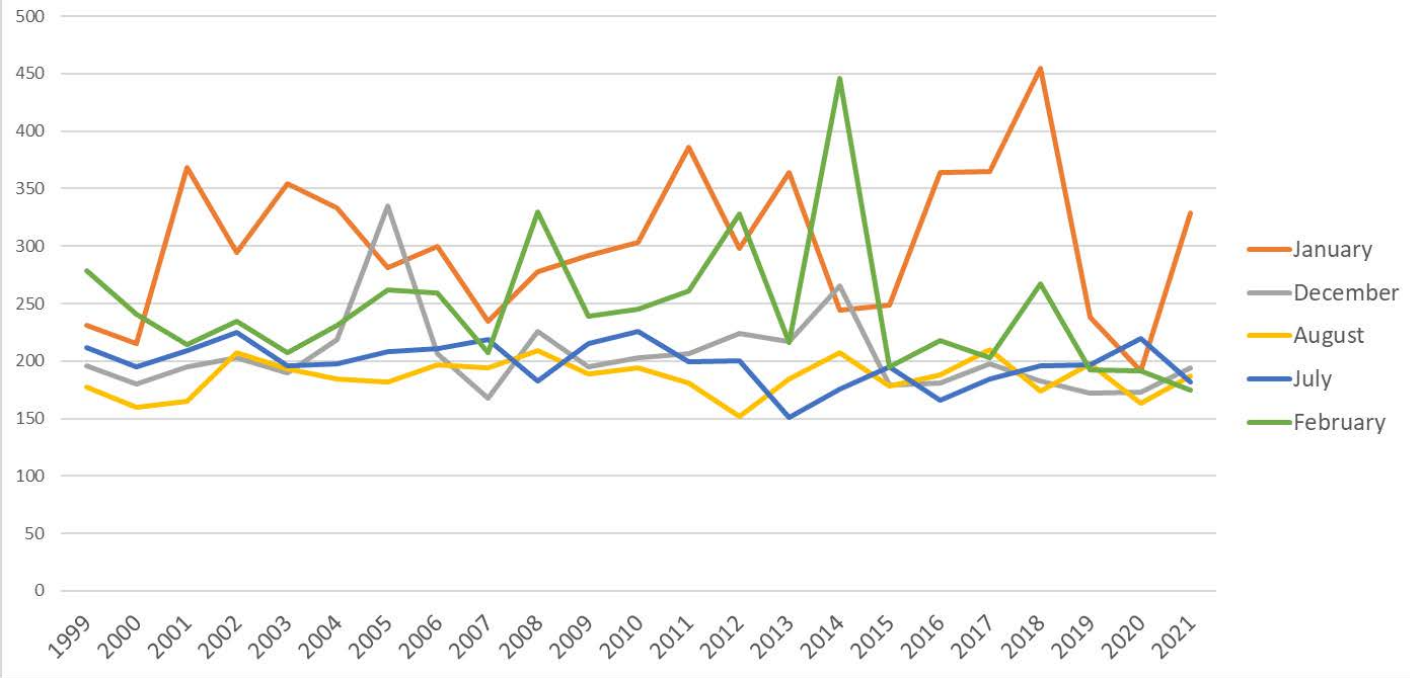
Transition of fatal and non-fatal accidents in workers ages in code no. 080205 newspaper retail (1999-2021)

Transition of fatal and non-fatal accidents in workers scales (1999-2021)

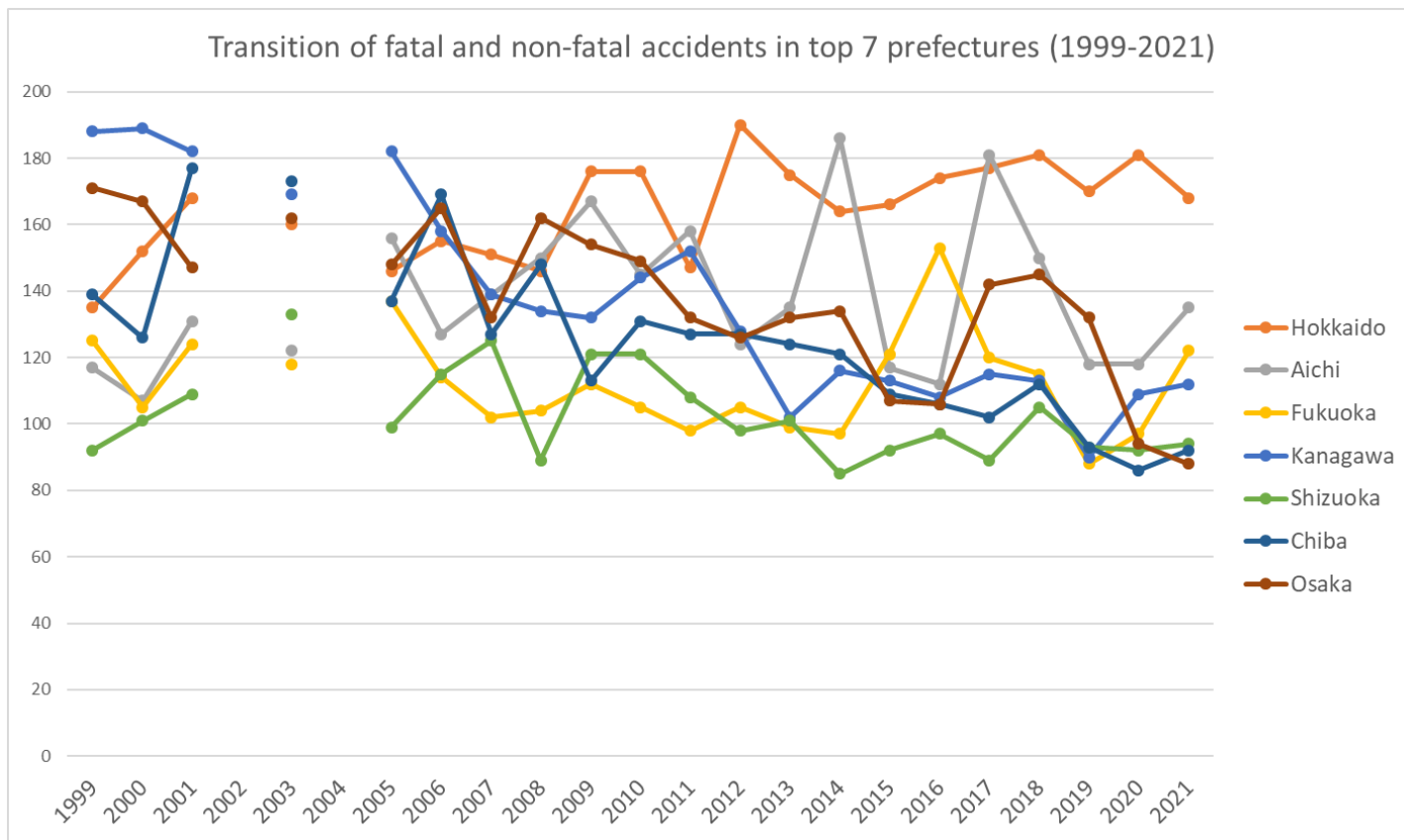


Transition of fatal and non-fatal accidents in workers scales in code no. 080205 newspaper retail (1999-2021)

Transition of fatal and non-fatal accidents in top 5 months (1999-2021)



Transition of fatal and non-fatal accidents in months in code no. 080205 newspaper retail (1999-2021)



Transition of fatal and non-fatal accidents in prefectures in code no. 080205 newspaper retail (1999-2021)

Transition of fatal and non-fatal accidents in large causal agents in code no. 080205 newspaper retail (1999-2021)

code	Causal (L) agents	1999	2000	2001	2002	2003	2004	2005	2006	2007	2008	2009	2010	2011	2012	2013	2014	2015	2016	2017	2018	2019	2020	2021	total	Causal (L) agents
2	crane, conveying machine	1,383	1,392	1,542	1,545	1,517	1,450	1,503	1,481	1,386	1,470	1,410	1,412	1,311	1,348	1,342	1,359	1,288	1,270	1,322	1,322	1,178	1,134	1,202	31,567	crane, conveying machine
4	temporary buildings, establishments	660	571	611	649	635	618	667	586	587	621	616	648	656	620	576	635	484	606	579	663	533	515	575	13,911	temporary buildings, establishments
7	environment	122	132	189	123	124	144	200	158	117	167	151	169	216	265	236	291	202	233	246	305	186	181	192	4,349	environment

3	other equipment	116	149	128	133	130	148	137	147	129	131	135	124	139	121	121	105	106	110	110	102	115	97	79	2,812	other equipment
9	others	83	76	83	91	75	82	66	82	67	78	64	86	66	70	46	66	65	53	61	66	61	64	43	1,594	others
6	load	33	23	28	21	27	25	33	27	23	28	14	18	22	19	10	15	19	14	16	9	11	9	10	454	load
5	substance, material	10	16	14	20	9	19	13	7	8	9	3	7	7	8	9	10	7	10	14	7	11	11	8	237	substance, material
1	machine	5	5	9	3	7	4	4	6	7	6	2	3	3	1	3	2	3	1		2		4	4	84	machine
	total	2,412	2,364	2,604	2,585	2,524	2,490	2,623	2,494	2,324	2,510	2,395	2,467	2,420	2,452	2,343	2,483	2,174	2,297	2,348	2,476	2,095	2,015	2,113	55,008	total

Transition of fatal and non-fatal accidents in middle causal agents in code no. 080205 newspaper retail (1999-2021)

code	Causal (M) agents	1999	2000	2001	2002	2003	2004	2005	2006	2007	2008	2009	2010	2011	2012	2013	2014	2015	2016	2017	2018	2019	2020	2021	total	Causal (M) agents
23	vehicle	1,330	1,348	1,510	1,506	1,478	1,414	1,479	1,449	1,361	1,440	1,392	1,382	1,290	1,326	1,327	1,341	1,273	1,255	1,302	1,310	1,162	1,128	1,191	30,994	vehicle
41	temporary buildings, establishments	660	571	611	649	635	618	667	586	587	621	616	648	656	620	576	635	484	606	579	663	533	515	575	13,911	temporary buildings, establishments
71	natural environment	122	132	189	123	124	144	200	158	117	167	151	169	216	265	236	291	202	233	246	305	186	181	192	4,349	natural environment
36	human power machine, tools	101	131	114	116	110	128	115	128	104	101	120	97	119	100	107	87	85	89	87	79	88	79	52	2,337	human power machine, tools
92	no causal agent	40	45	38	53	52	49	47	51	44	51	39	54	43	46	32	32	47	34	42	35	30	44	36	984	no causal agent
37	tools	6	12	9	14	18	11	16	17	21	22	11	20	17	14	11	12	13	14	17	18	21	10	23	347	tools
22	conveying machine	53	42	30	39	39	36	24	30	25	29	18	30	21	21	15	18	15	15	20	12	14	6	11	563	conveying machine
61	load	33	23	28	21	27	25	33	27	23	28	14	18	22	19	10	15	19	14	16	9	11	9	10	454	load

52	materials	10	14	14	19	9	18	13	7	8	9	3	7	7	8	8	9	7	10	14	7	11	11	8	231	materials
91	other causal agent	33	27	33	28	20	30	17	29	20	19	23	26	21	22	14	30	18	17	19	25	30	18	5	524	other causal agent
39	other equipments, facilities	6	6	5	2	2	7	6	2	3	6	3	7	3	7	3	6	6	7	3	4	5	6	4	109	other equipments, facilities
16	general machine	4	5	6	3	6	3	2	6	7	6	1	3	1	1	3	2	3	1		2		3	3	71	general machine
99	unclassifiable	10	4	12	10	3	3	2	2	3	8	2	6	2	2		4		2		6	1	2	2	86	unclassifiable
12	power transmission mechanism			1																				1	2	power transmission mechanism
35	electric equipment	3			1		2			1	2	1						2		3	1		2		18	electric equipment
21	crane		2	2					2		1				1										10	crane
51	hazards, harmful substances		2		1		1									1	1								6	hazards, harmful substances
14	construction machine					1		2						1											4	construction machine
15	metal manufacturing machine	1		1			1																		3	metal manufacturing machine
11	engine			1										1											2	engine
13	woodworking machine											1											1		2	woodworking machine
31	pressure vessel																					1			1	pressure vessel

239	other vehicles			97		101		65	67	63	57	42	59	65	68	57	22	14	19	28	9	8	8	12	861	other vehicles
221	truck			27		38		23	28	25	28	17	30	21	21	15	18	14	15	18	12	13	6	11	380	truck
611	load			28		26		33	26	23	28	14	17	22	19	10	15	18	14	16	8	10	9	10	346	load
371	ladder			5		10		11	5	10	10	4	10	7	7	8	7	8	4	6	7	10	6	10	145	ladder
416	working platform, boot board			14		17		13	19	24	13	14	20	16	12	16	14	9	26	25	16	12	7	7	294	working platform, boot board
715	high/cold temperature environment			28		10		6	13	4	13	4	7	13	9	12	10	6	2	6	13	10	5	6	177	high/cold temperature environment
911	other causal agent			33		20		17	29	20	19	23	26	21	22	14	30	18	17	19	25	30	18	5	406	other causal agent
523	stone, sand, substance			8		2		3	3	2	3		2		6	1	2	2	2	7	1	5	7	5	61	stone, sand, substance
391	other equipment, facilities			5		2		6	2	3	6	3	7	3	7	3	6	6	7	3	4	5	6	4	88	other equipment, facilities
713	water			1		1			5	4	4	2	6	6	5	3	2	1	4		3	3	5	3	58	water
712	standing tree			2		1		2	1	1		4	1	4	3	1	1	3	1	3	2	2	6	3	41	standing tree
414	opening			1		2		1			2	1		2	1	1			1		2		3	3	20	opening
711	natural ground, rock			8		7		9	6	8	3	5	6	2	6	6	5	4	3	6	6	6	6	2	104	natural ground, rock
999	unclassifiable			12		3		2	2	3	8	2	6	2	2		4		2		6	1	2	2	59	unclassifiable
169	other general power machines			5		5		1	5	6	5	1	3	1	1	3	2	3	1		2		3	2	49	other general power machines
529	other materials			2		1		5		2	4	2	1	4	1	2	3	1	2	1	4	3	2	2	42	other materials
521	metal material			3		3		5	4	3	2		4	1	1	4	4	3	4	4	2	1		1	49	metal material
364	hand tool			5		2		5	1	1	2		2	2	4	1	1	1		1		1		1	30	hand tool
411	scaffolding								2		1	1			2	2					2			1	11	scaffolding

166	printing machine			1		1		1	1	1												1	6	printing machine
361	human power cranes															1		1		1		1	4	human power cranes
121	power transmission mechanism			1																		1	2	power transmission mechanism
714	abnormal environment			6		1		2	1		1	2	3	3	3	1				3	1		27	abnormal environment
522	lumber, bamboo			1		3			1		1		2		1		1	2	2		2	2	18	lumber, bamboo
351	transmission									2	1					2		3	1		1		10	transmission
415	roof, beam, haze, crossbeam, principal rafter			3					1	1			1	1			1		1				9	roof, beam, haze, crossbeam, principal rafter
232	railway vehicle								1	1	1		2			1		1		1			8	railway vehicle
222	forklift			1					1	1	1					1		1		1			7	forklift
612	machine/equipment as load					1			1				1			1			1	1			6	machine/equipment as load
214	elevator, lift								1		1				1					1			4	elevator, lift
229	other powered conveying machines			2		1												1					4	other powered conveying machines
141	leveling, transporting or loading machine							2						1									3	leveling, transporting or loading machine
372	slinging tool							1									1	1					3	slinging tool
111	engine			1										1									2	engine
219	other powered crane			1					1														2	other powered crane

134	hollow chisel mortiser, wood borer																							hollow chisel mortiser, wood borer
135	chamfering machine, router, woodworking milling machine																							chamfering machine, router, woodworking milling machine
139	other woodworking machines																							other woodworking machines
143	foundation work machine																							foundation work machine
144	hardening machine																							hardening machine
145	demolition machine																							demolition machine
146	vehicle for high lift work																							vehicle for high lift work
149	other construction machines																							other construction machines
151	lathe																							lathe
152	drill press, milling machine																							drill press, milling machine
154	power press																							power press
155	forging pressure hammer																							forging pressure hammer
156	shearing machine																							shearing machine
159	other metal manufacturing machines																							other metal manufacturing machines

12	substance	1							2						4						1	2			10	harmful substance
14	explosion								1				1												2	explosion
15	burst											1									1				2	burst
13	electric shock																									electric shock
	total	2,412	2,364	2,604	2,585	2,524	2,490	2,623	2,494	2,324	2,510	2,395	2,467	2,420	2,452	2,343	2,483	2,174	2,297	2,348	2,476	2,095	2,015	2,113	55,008	total

Transition of fatal and non-fatal accidents in workers ages in code no. 080205 newspaper retail (1999-2021)

code	Age	1999	2000	2001	2002	2003	2004	2005	2006	2007	2008	2009	2010	2011	2012	2013	2014	2015	2016	2017	2018	2019	2020	2021	total	Age
6	60 years old or more	480	528	521	552	582	630	691	667	640	812	752	879	948	1,041	998	1,141	981	1,134	1,184	1,266	1,115	1,081	1,206	19,829	60 years old or more
5	50-59	581	561	666	669	682	661	792	734	645	703	635	672	583	558	537	560	463	501	503	519	455	415	413	13,508	50-59
4	40-49	492	441	476	472	432	419	414	439	422	402	428	383	413	375	373	373	338	354	333	353	284	288	244	8,948	40-49
3	30-39	354	352	385	426	411	393	370	347	348	338	326	291	268	271	257	225	225	169	196	201	132	119	119	6,523	30-39
2	20-29	351	356	405	367	326	305	287	234	213	201	206	210	164	171	142	152	143	115	113	116	84	97	111	4,869	20-29
1	19 years old or less	154	126	151	99	91	82	69	73	56	54	48	32	44	36	36	32	24	24	19	21	25	15	20	1,331	19 years old or less
	total	2,412	2,364	2,604	2,585	2,524	2,490	2,623	2,494	2,324	2,510	2,395	2,467	2,420	2,452	2,343	2,483	2,174	2,297	2,348	2,476	2,095	2,015	2,113	55,008	total

Transition of fatal and non-fatal accidents in workers scales in code no. 080205 newspaper retail (1999-2021)

code	Workers scale	1999	2000	2001	2002	2003	2004	2005	2006	2007	2008	2009	2010	2011	2012	2013	2014	2015	2016	2017	2018	2019	2020	2021	total	Workers scale
2	10-29	1,055	1,049	1,158	1,120	1,066	1,076	1,100	1,051	966	1,090	1,046	1,069	1,092	1,103	995	1,104	990	1,084	1,091	1,153	996	980	1,007	24,441	10-29
3	30-49	485	534	614	602	659	651	696	636	645	655	649	626	669	643	651	709	605	646	699	654	572	542	578	14,420	30-49
4	50-99	354	310	316	326	329	313	315	327	278	287	296	333	268	284	322	305	254	249	265	304	251	209	257	6,752	50-99
1	9 workers or less	315	285	322	331	297	299	350	300	299	334	282	300	275	277	243	257	226	213	203	248	207	199	204	6,266	9 workers or less
5	100-299	177	165	170	175	153	107	131	141	114	121	112	117	101	129	118	98	82	92	75	96	62	75	61	2,672	100-299

6	300 workers or more	26	21	24	31	20	44	31	39	22	23	10	22	15	16	14	10	17	13	15	21	7	10	6	457	300 workers or more
	total	2,412	2,364	2,604	2,585	2,524	2,490	2,623	2,494	2,324	2,510	2,395	2,467	2,420	2,452	2,343	2,483	2,174	2,297	2,348	2,476	2,095	2,015	2,113	55,008	total

Transition of fatal and non-fatal accidents in months in code no. 080205 newspaper retail (1999-2021)

code	Month	1999	2000	2001	2002	2003	2004	2005	2006	2007	2008	2009	2010	2011	2012	2013	2014	2015	2016	2017	2018	2019	2020	2021	total	Month
1	January	231	215	368	294	354	333	281	300	235	278	292	303	386	298	364	244	249	364	365	455	238	191	329	6,967	January
12	December	196	180	195	203	190	219	335	206	168	226	195	203	206	224	217	265	179	181	198	183	172	173	194	4,708	December
8	August	177	160	165	207	193	184	182	197	194	209	189	194	181	152	184	207	178	188	210	174	198	163	187	4,273	August
7	July	212	195	209	225	196	198	208	211	219	183	215	226	199	200	151	176	195	166	184	196	197	220	182	4,563	July
2	February	279	241	214	235	207	231	262	259	207	330	239	245	261	328	216	446	195	218	203	267	192	191	175	5,641	February
3	March	189	232	244	237	221	222	224	248	205	212	209	244	182	236	200	218	223	196	174	213	181	166	167	4,843	March
5	May	187	183	200	206	183	185	162	182	175	173	187	166	145	152	133	146	159	160	140	127	125	138	163	3,777	May
10	October	166	200	235	183	177	181	207	165	185	184	205	160	155	156	198	165	149	159	211	192	172	162	154	4,121	October
9	September	197	207	178	205	192	190	180	195	163	178	170	210	209	170	175	161	175	171	203	220	176	173	145	4,243	September
6	June	225	188	209	199	214	206	196	172	207	174	181	181	180	185	164	148	149	152	163	152	145	166	141	4,097	June
11	November	177	191	189	193	191	163	179	181	186	186	166	157	153	194	194	159	170	178	147	166	156	147	139	3,962	November
4	April	176	172	198	198	206	178	207	178	180	177	147	178	163	157	147	148	153	164	150	131	143	125	137	3,813	April
	total	2,412	2,364	2,604	2,585	2,524	2,490	2,623	2,494	2,324	2,510	2,395	2,467	2,420	2,452	2,343	2,483	2,174	2,297	2,348	2,476	2,095	2,015	2,113	55,008	total

Transition of fatal and non-fatal accidents in prefectures in code no. 080205 newspaper retail (1999-2021)

code	Prefecture	1999	2000	2001	2002	2003	2004	2005	2006	2007	2008	2009	2010	2011	2012	2013	2014	2015	2016	2017	2018	2019	2020	2021	total	Prefecture
1	Hokkaido	135	152	168		160		146	155	151	146	176	176	147	190	175	164	166	174	177	181	170	181	168	3,458	Hokkaido
23	Aichi	117	107	131		122		156	127	139	150	167	145	158	124	135	186	117	112	181	150	118	118	135	2,895	Aichi
40	Fukuoka	125	105	124		118		137	114	102	104	112	105	98	105	99	97	121	153	120	115	88	97	122	2,361	Fukuoka

14	Kanagawa	188	189	182		169		182	158	139	134	132	144	152	128	102	116	113	108	115	113	90	109	112	2,875	Kanagawa
22	Shizuoka	92	101	109		133		99	115	125	89	121	121	108	98	101	85	92	97	89	105	93	92	94	2,159	Shizuoka
12	Chiba	139	126	177		173		137	169	127	148	113	131	127	127	124	121	109	106	102	112	93	86	92	2,639	Chiba
27	Osaka	171	167	147		162		148	165	132	162	154	149	132	126	132	134	107	106	142	145	132	94	88	2,895	Osaka
15	Niigata	94	66	78		67		78	66	75	54	57	58	96	86	88	86	66	77	99	110	51	63	81	1,596	Niigata
28	Hyogo	121	120	117		120		151	104	107	138	113	120	103	115	106	107	114	91	120	125	97	82	80	2,351	Hyogo
13	Tokyo	158	143	163		118		126	126	122	159	121	110	119	104	112	104	94	117	88	103	89	82	76	2,434	Tokyo
8	Ibaraki	55	67	77		77		67	82	67	70	58	59	64	68	69	86	73	72	51	68	49	69	68	1,416	Ibaraki
11	Saitama	80	107	128		147		131	129	121	110	103	120	93	95	87	97	100	82	79	83	72	68	66	2,098	Saitama
4	Miyagi	33	32	55		51		58	68	58	64	42	49	63	75	70	69	40	59	52	67	52	42	56	1,155	Miyagi
35	Yamaguchi	45	35	30		38		46	53	40	44	41	54	35	59	41	34	38	53	37	42	28	33	55	881	Yamaguchi
34	Hiroshima	60	41	45		49		45	46	39	38	38	35	35	49	46	58	54	54	32	38	42	37	44	925	Hiroshima
10	Gunma	44	40	51		39		45	42	32	41	43	47	45	37	44	55	46	59	45	55	47	44	43	944	Gunma
24	Mie	42	32	44		43		54	48	48	66	51	58	66	62	44	56	44	52	49	53	43	58	40	1,053	Mie
43	Kumamoto	33	32	43		42		41	53	41	30	22	37	36	31	25	31	28	43	41	28	33	22	40	732	Kumamoto
9	Tochigi	52	40	58		40		51	36	37	50	46	36	45	39	44	59	40	46	64	48	39	50	39	959	Tochigi
21	Gifu	16	26	29		37		56	28	33	45	38	46	40	50	38	34	25	52	45	46	37	37	39	797	Gifu
29	Nara	37	36	34		45		39	38	36	66	49	55	48	46	46	45	33	39	44	56	26	23	35	876	Nara
20	Nagano	23	24	38		33		38	25	34	28	33	35	36	54	57	50	41	33	56	43	45	30	35	791	Nagano
7	Fukushima	31	35	29		27		37	39	23	51	45	34	36	42	44	53	29	35	42	43	40	36	33	784	Fukushima
46	Kagoshima	15	15	13		18		25	14	15	23	22	18	12	12	19	27	22	21	13	30	27	18	33	412	Kagoshima
6	Yamagata	34	30	36		24		32	34	28	31	39	34	34	38	30	26	20	24	24	30	21	27	31	627	Yamagata
42	Nagasaki	18	20	25		22		27	18	19	20	23	30	24	22	15	24	28	28	25	34	31	37	31	521	Nagasaki
16	Toyama	33	29	17		27		46	42	28	31	27	22	29	37	25	43	39	28	35	33	22	24	30	647	Toyama
17	Ishikawa	41	31	28		26		32	29	23	21	23	25	35	22	20	26	24	25	21	38	18	21	28	557	Ishikawa

26	Kyoto	52	78	59		63		50	37	54	48	44	48	38	33	41	46	33	37	41	31	31	21	27	912	Kyoto
41	Saga	23	15	14		19		23	19	26	24	27	27	20	21	25	29	22	16	9	38	21	28	26	472	Saga
33	Okayama	42	51	41		53		67	48	41	48	46	56	50	43	54	47	41	31	47	38	32	28	24	928	Okayama
30	Wakayama	25	28	27		23		32	34	25	24	29	31	23	24	26	34	22	22	16	22	31	25	24	547	Wakayama
37	Kagawa	24	29	22		22		28	31	20	25	29	23	21	35	20	35	25	17	26	27	30	19	24	532	Kagawa
38	Ehime	17	19	23		22		13	20	13	16	16	13	15	24	28	21	23	30	20	18	19	21	24	415	Ehime
3	Iwate	17	23	28		15		13	22	22	29	16	14	26	24	32	21	14	13	15	24	28	28	21	445	Iwate
39	Kochi	16	23	22		20		12	9	11	13	15	19	18	18	18	17	22	19	19	18	20	23	17	369	Kochi
45	Miyazaki	18	15	12		13		18	15	10	13	12	14	12	13	13	13	13	11	17	17	18	14	17	298	Miyazaki
5	Akita	31	22	18		11		16	17	20	17	20	21	23	26	19	8	14	17	11	19	31	11	16	388	Akita
2	Aomori	13	15	23		11		13	21	34	27	26	28	27	30	19	27	13	22	25	24	25	20	15	458	Aomori
36	Tokushima	20	18	29		19		24	17	18	13	12	19	25	23	12	20	12	14	24	19	23	21	14	396	Tokushima
32	Shimane	11	18	15		23		17	21	8	21	16	19	16	26	25	11	13	15	14	19	19	15	14	356	Shimane
18	Fukui	7	7	19		11		10	13	16	8	16	11	15	9	10	14	6	17	12	14	13	9	14	251	Fukui
44	Oita	22	14	25		25		13	15	20	19	21	26	16	21	25	25	26	23	24	16	14	15	13	418	Oita
25	Shiga	31	28	24		18		24	19	36	27	24	25	27	16	19	16	21	16	16	19	22	17	11	456	Shiga
19	Yamanashi	3	1	12		18		8	7	3	8	6	6	2	6		10	10	8	5	8	10	9	9	149	Yamanashi
31	Tottori	7	9	14		6		7	1	3	9	6	6	15	8	7	11	7	11	11	6	5	5	5	159	Tottori
47	Okinawa	1	3	1		5		5	5	3	8	5	8	15	11	12	5	14	12	8	5	10	6	4	146	Okinawa
	total	2,412	2,364	2,604		2,524		2,623	2,494	2,324	2,510	2,395	2,467	2,420	2,452	2,343	2,483	2,174	2,297	2,348	2,476	2,095	2,015	2,113	49,933	total

Data source : <https://anzeninfo.mhlw.go.jp/user/anzen/tok/anst00.htm>

Return to https://www.jisha.or.jp/english/statistics/202211_23.html