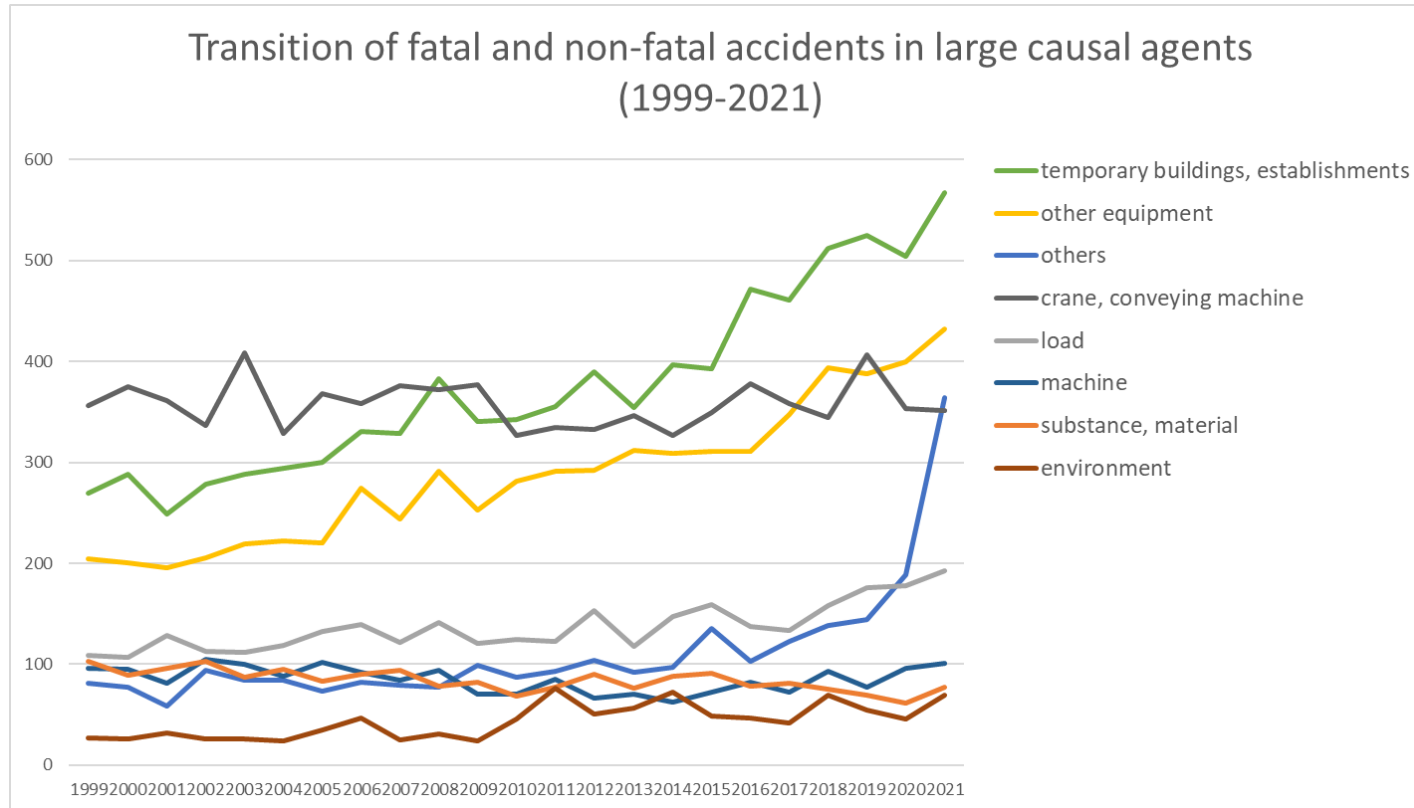
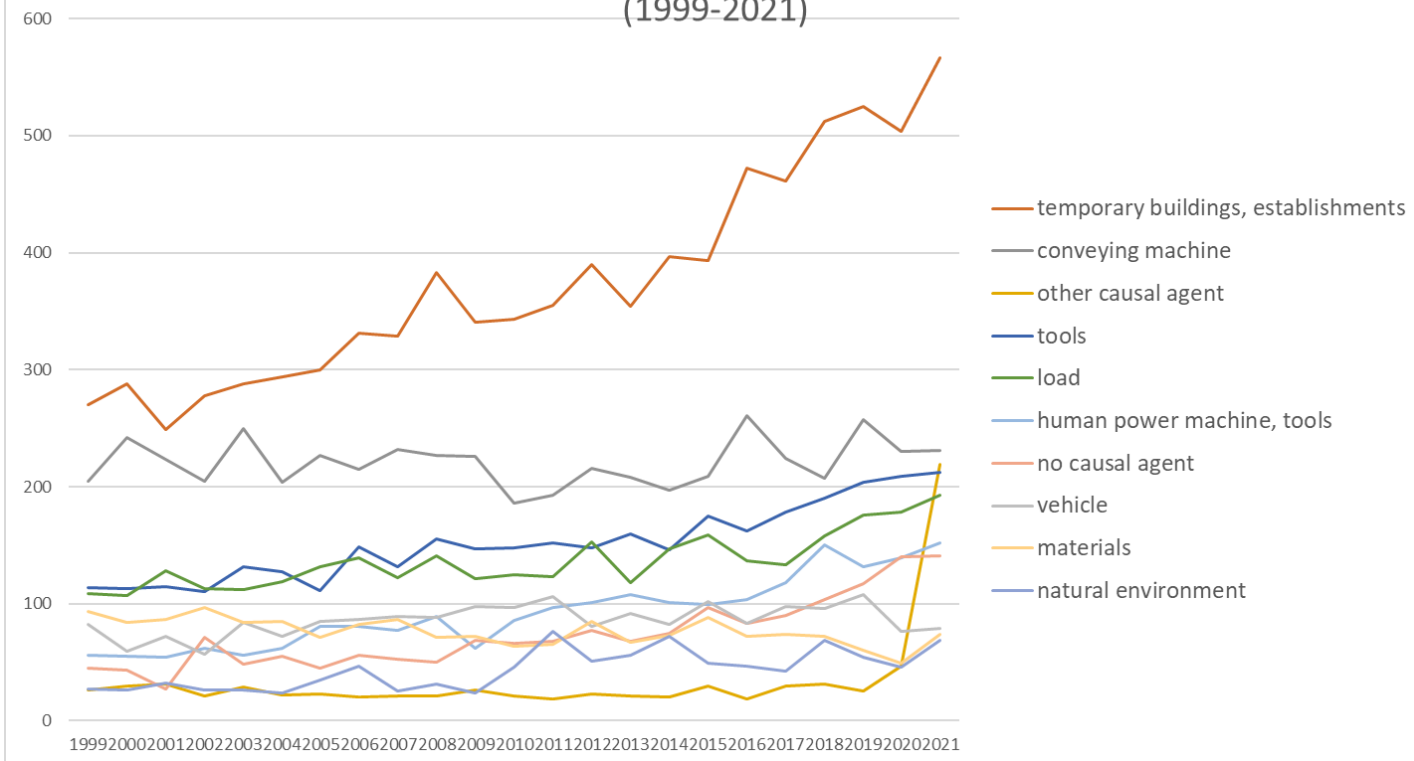


Transition of fatal and non-fatal accidents in each element like as causal agents, type of accidents, etc. in code no. 0804 other commerce (1999-2021)



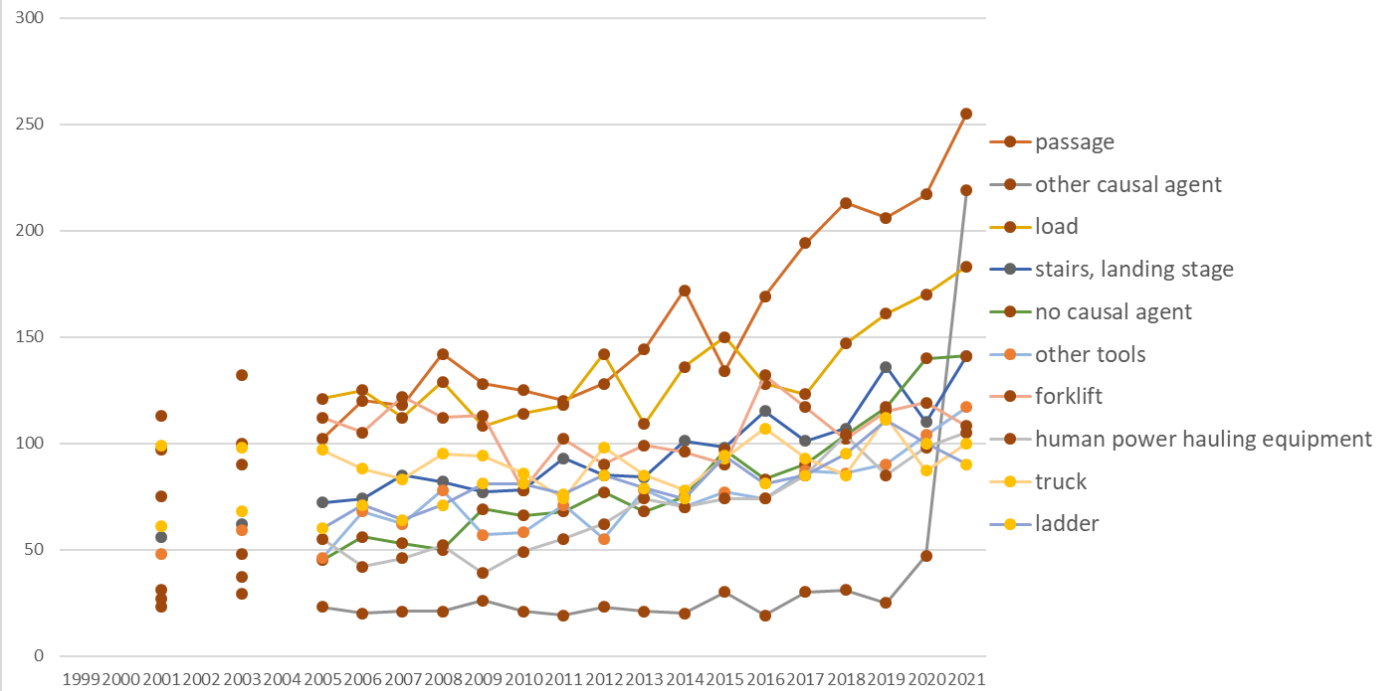
Transition of fatal and non-fatal accidents in large causal agents in code no. 0804 other commerce (1999-2021)

Transition of fatal and non-fatal accidents in top 10 middle causal agents  
(1999-2021)



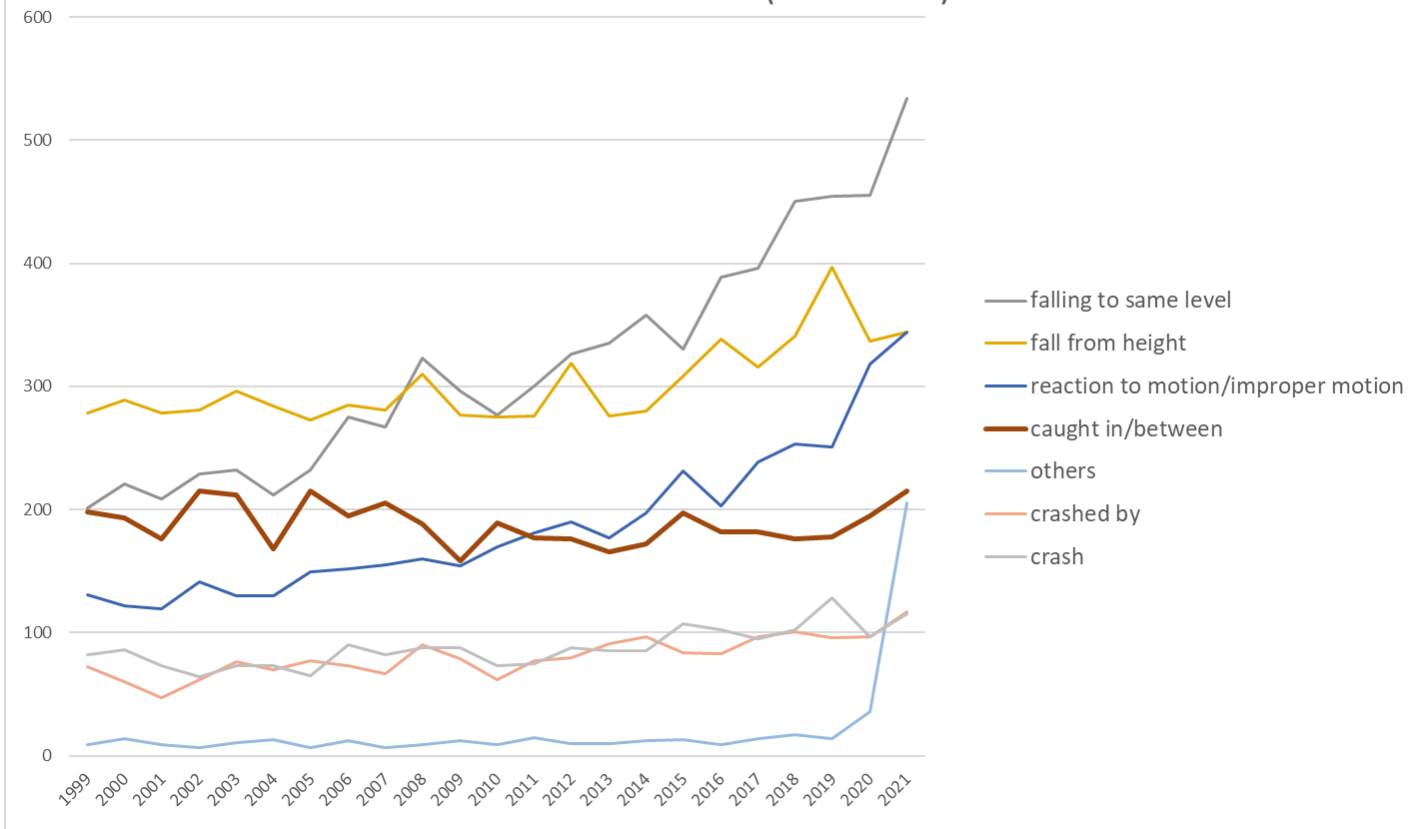
Transition of fatal and non-fatal accidents in middle causal agents in code no. 0804 other commerce (1999-2021)

Transition of fatal and non-fatal accidents in top 10 small causal agents  
(1999-2021)



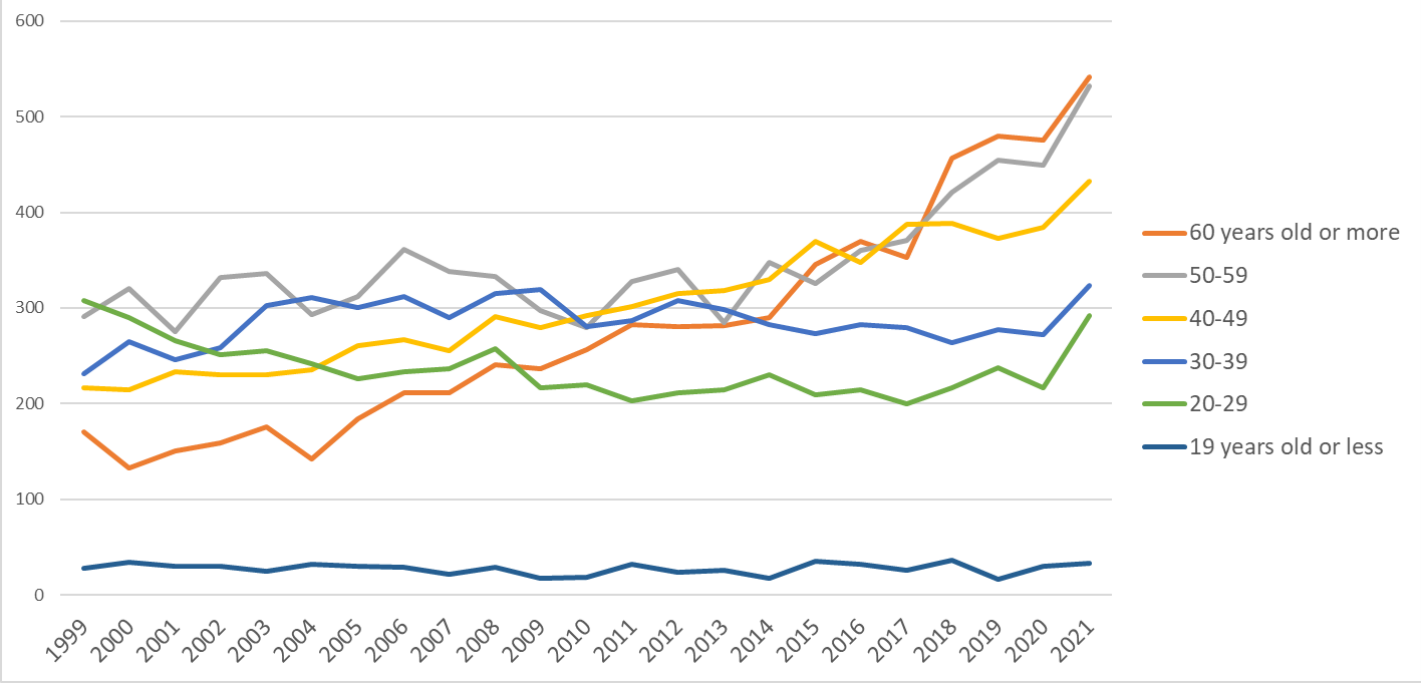
Transition of fatal and non-fatal accidents in small causal agents in code no. 0804 other commerce (1999-2021)

Transition of fatal and non-fatal accidents in top 7 type of accidents  
(1999-2021)



Transition of fatal and non-fatal accidents in type of accidents in code no. 0804 other commerce (1999-2021)

Transition of fatal and non-fatal accidents in workers ages (1999-2021)



Transition of fatal and non-fatal accidents in workers ages in code no. 0804 other commerce (1999-2021)





































29	Nara	4	4	8		2		11	9	8	15	4	15	7	7	7	10	10	6	3	4	17	7	19	177	Nara
3	Iwate	11	15	11		14		10	13	20	8	7	10	23	15	21	14	11	16	18	19	22	10	18	306	Iwate
35	Yamaguchi	15	16	6		12		10	10	8	14	12	10	10	12	7	9	17	5	12	12	21	9	17	244	Yamaguchi
38	Ehime	6	10	6		13		14	10	15	10	8	16	7	9	3	5	10	11	14	18	16	10	17	228	Ehime
17	Ishikawa	17	15	13		13		8	11	15	10	20	14	8	11	17	16	13	9	9	12	23	13	16	283	Ishikawa
37	Kagawa	15	13	10		14		14	12	9	24	10	7	6	15	5	10	8	6	15	15	14	14	15	251	Kagawa
32	Shimane	2	6	1		5		3	2	1	2	2	1	4	3	4	3	4	7	5	8	8	3	13	87	Shimane
24	Mie	22	25	24		19		20	21	16	16	25	26	16	14	16	13	20	14	10	23	22	17	12	391	Mie
21	Gifu	18	16	11		13		11	21	14	11	11	13	10	11	12	13	20	12	20	20	35	25	12	329	Gifu
45	Miyazaki	10	12	9		12		6	8	8	18	3	10	15	11	8	18	23	16	15	10	18	22	12	264	Miyazaki
16	Toyama	13	10	15		7		18	11	13	9	11	10	16	10	14	15	8	6	12	7	9	9	12	235	Toyama
42	Nagasaki	10	9	9		10		6	8	8	5	12	8	4	7	12	14	10	12	19	10	11	14	12	210	Nagasaki
5	Akita	8	7	10		8		13	17	7	17	3	10	7	4	10	5	6	14	9	6	7	6	12	186	Akita
39	Kochi	18	15	17		24		9	8	5	8	8	15	13	11	9	3	8	7	5	9	1	4	11	208	Kochi
30	Wakayama	8	11	9		9		6		5	6	7	4	4	10	10	7	9	8	8	5	13	11	11	161	Wakayama
18	Fukui	9	16	10		8		9	9	7	12	9	11	11	11	9	11	5	11	14	19	11	13	10	225	Fukui
6	Yamagata	3	10	7		4		12	6	5	7	17	7	7	9	15	12	8	20	14	16	7	7	10	203	Yamagata
44	Oita	11	4	4		9		13	14	12	11	4	9	6	6	18	10	10	11	7	9	12	8	10	198	Oita
36	Tokushima	8	7	9		5		11	9	6	6	3	1		7	3	5	7	5	7	6	9	10	7	131	Tokushima
31	Tottori	7	2	4		4		8	2	5	4	6	6	6	3	2	5	4	2	6	9	4	7	4	100	Tottori
	total	1,246	1,257	1,201		1,325		1,313	1,413	1,353	1,467	1,367	1,347	1,435	1,479	1,424	1,499	1,559	1,608	1,617	1,783	1,840	1,827	2,154	31,514	total

Data source : <https://anzeninfo.mhlw.go.jp/user/anzen/tok/anst00.htm>

Return to [https://www.jisha.or.jp/english/statistics/202211\\_23.html](https://www.jisha.or.jp/english/statistics/202211_23.html)