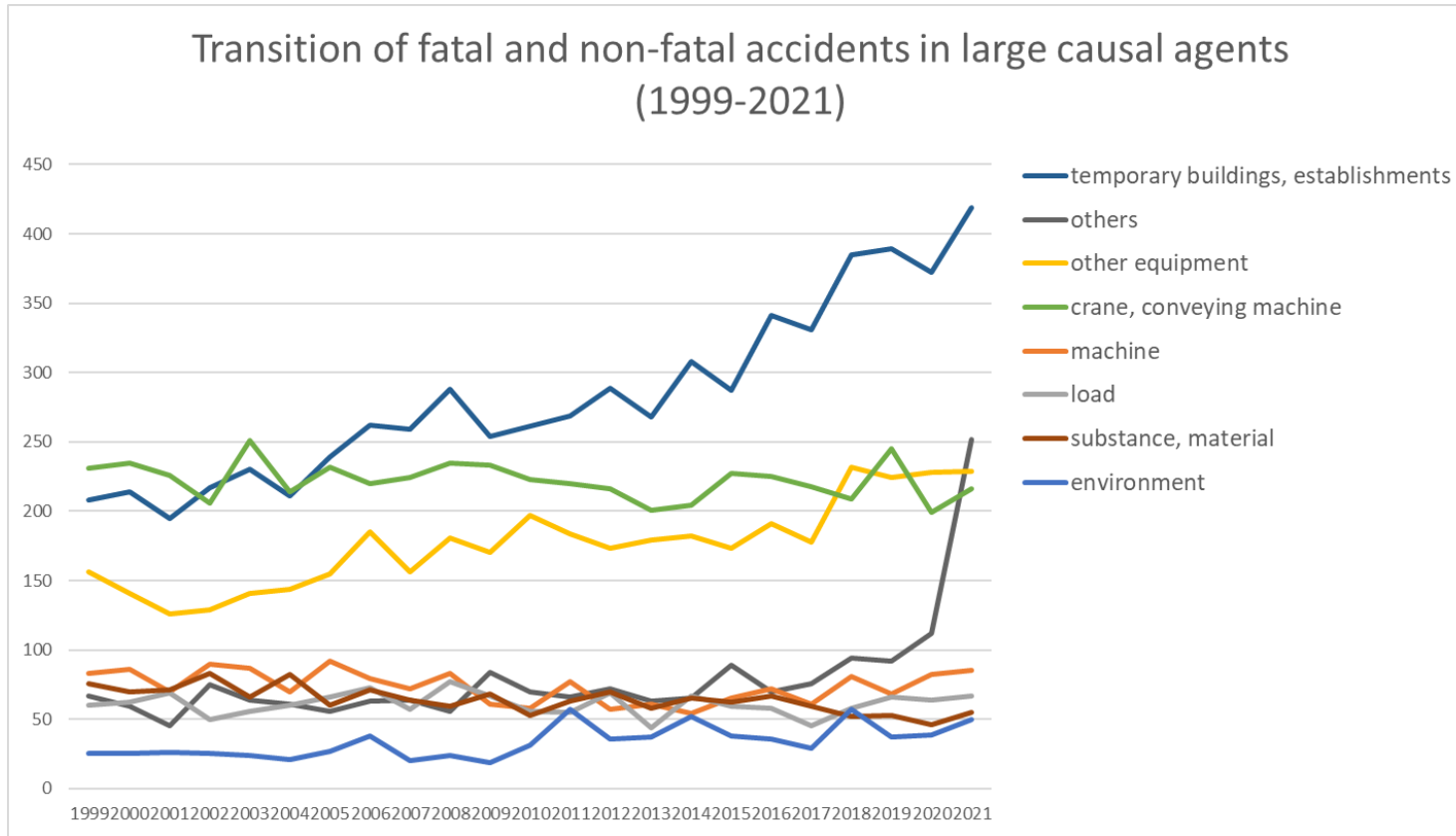
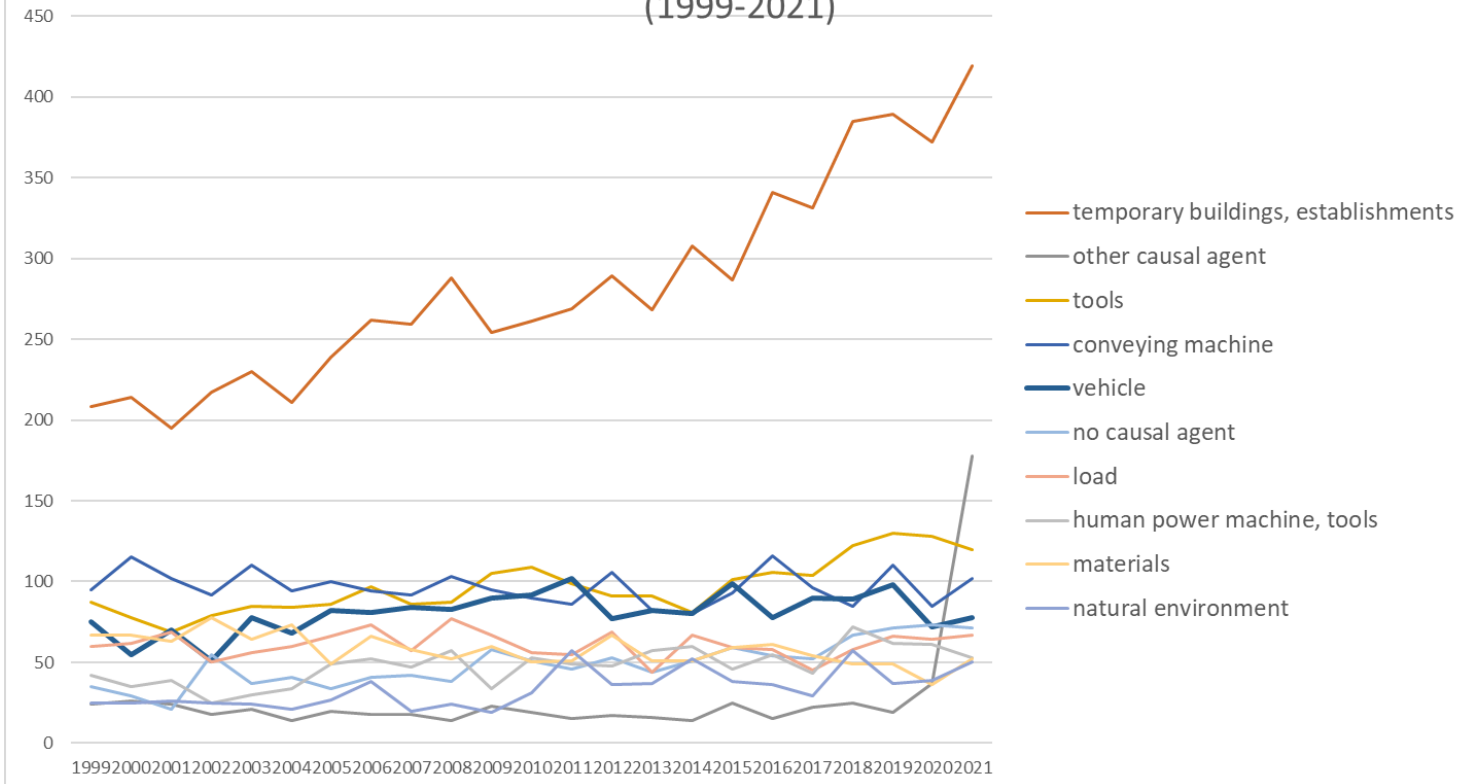


Transition of fatal and non-fatal accidents in each element like as causal agents, type of accidents, etc. in code no. 080409 other commerce (1999-2021)



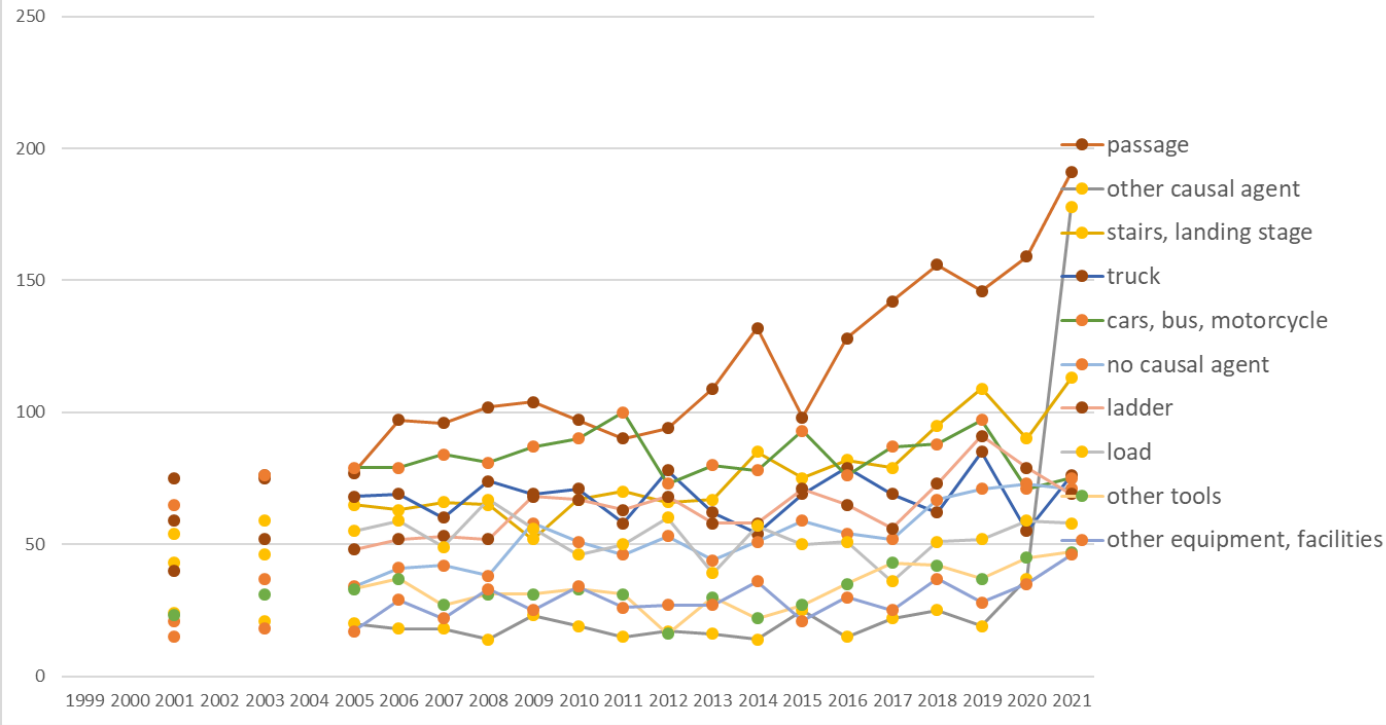
Transition of fatal and non-fatal accidents in large causal agents in code no. 080409 other commerce (1999-2021)

### Transition of fatal and non-fatal accidents in top 10 middle causal agents (1999-2021)



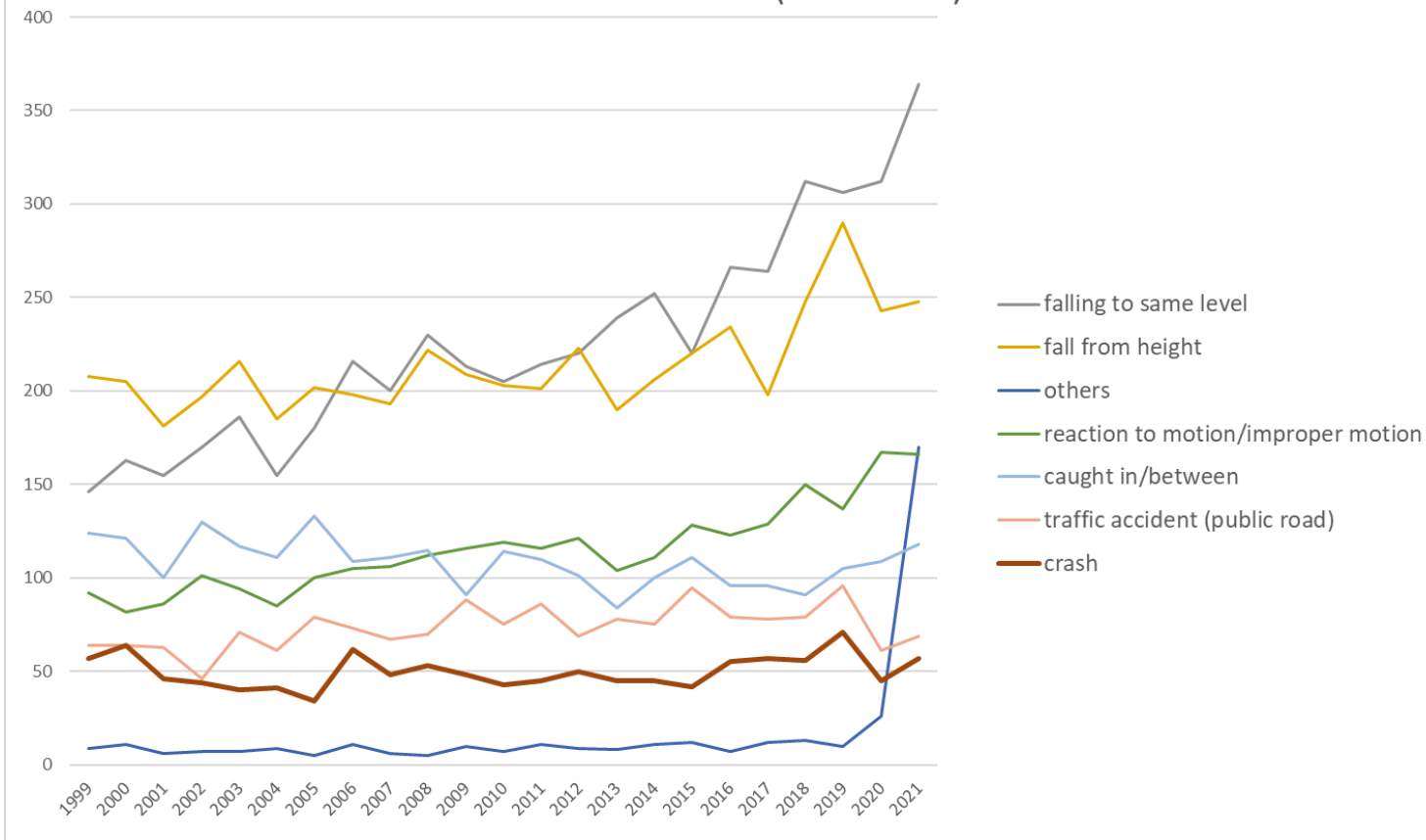
Transition of fatal and non-fatal accidents in middle causal agents in code no. 080409 other commerce (1999-2021)

### Transition of fatal and non-fatal accidents in top 10 small causal agents (1999-2021)



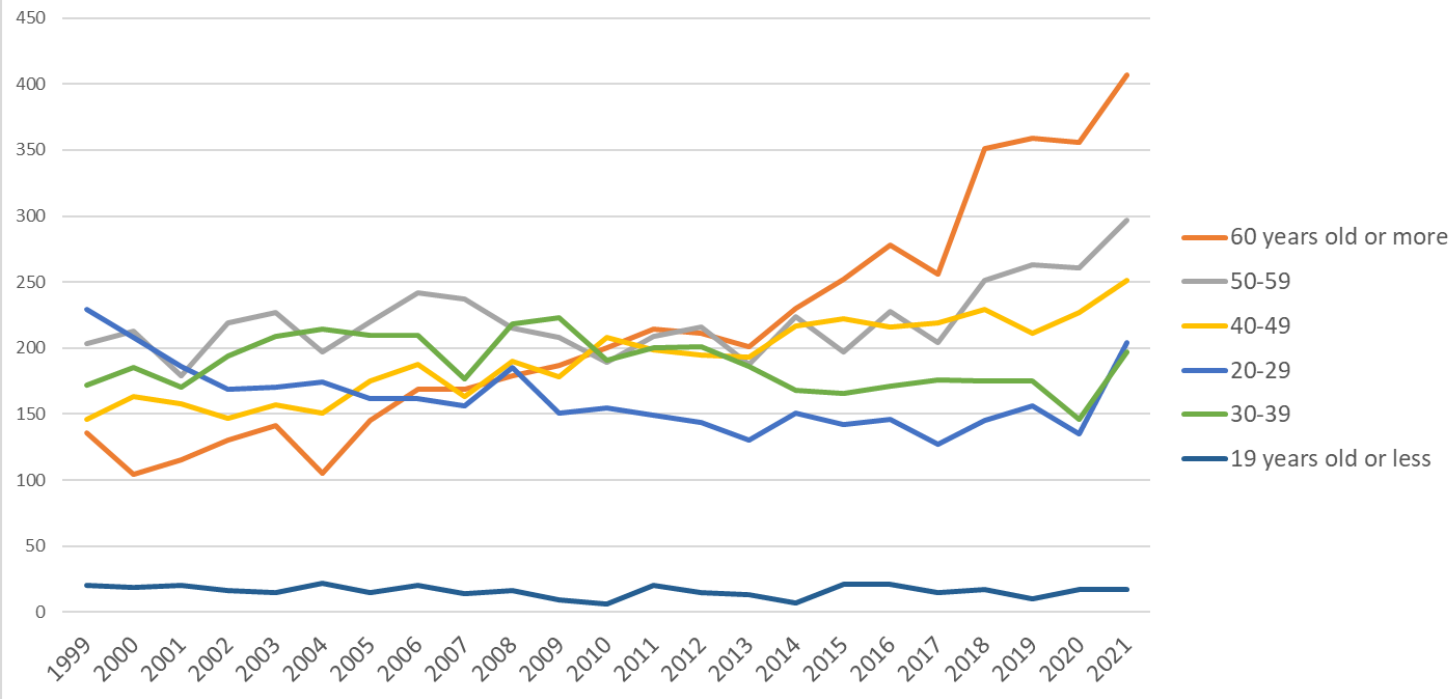
Transition of fatal and non-fatal accidents in small causal agents in code no. 080409 other commerce (1999-2021)

Transition of fatal and non-fatal accidents in top 7 type of accidents  
(1999-2021)



Transition of fatal and non-fatal accidents in type of accidents in code no. 080409 other commerce (1999-2021)

Transition of fatal and non-fatal accidents in workers ages (1999-2021)



Transition of fatal and non-fatal accidents in workers ages in code no. 080409 other commerce (1999-2021)







































21	Gifu	14	13	6		7		8	13	9	7	8	6	4	6	6	6	9	6	5	7	15	10	8	173	Gifu
6	Yamagata		10	6		4		9	6	4	7	16	4	4	5	10	8	6	19	13	15	5	6	8	165	Yamagata
39	Kochi	16	15	16		24		9	8	4	8	8	15	13	11	9	2	8	6	4	8	1	3	7	195	Kochi
36	Tokushima	8	7	9		5		8	8	5	5	3			5	3	5	7	5	7	6	8	8	7	119	Tokushima
30	Wakayama	4	8	7		6		4		3	4	5	4	3	9	7	6	7	3	6	4	11	6	7	114	Wakayama
18	Fukui	6	8	8		5		7	8	3	7	4	7	9	8	3	9	3	7	8	13	10	11	6	150	Fukui
31	Tottori	6		4		4		8	2	3	4	5	6	6	3	2	4	3	2	5	8	4	7	3	89	Tottori
	total	906	892	828		919		927	991	916	1,003	956	949	991	982	911	997	1,000	1,060	997	1,168	1,174	1,142	1,373	21,082	total

Data source : <https://anzeninfo.mhlw.go.jp/user/anzen/tok/anst00.htm>

Return to [https://www.jisha.or.jp/english/statistics/202211\\_23.html](https://www.jisha.or.jp/english/statistics/202211_23.html)