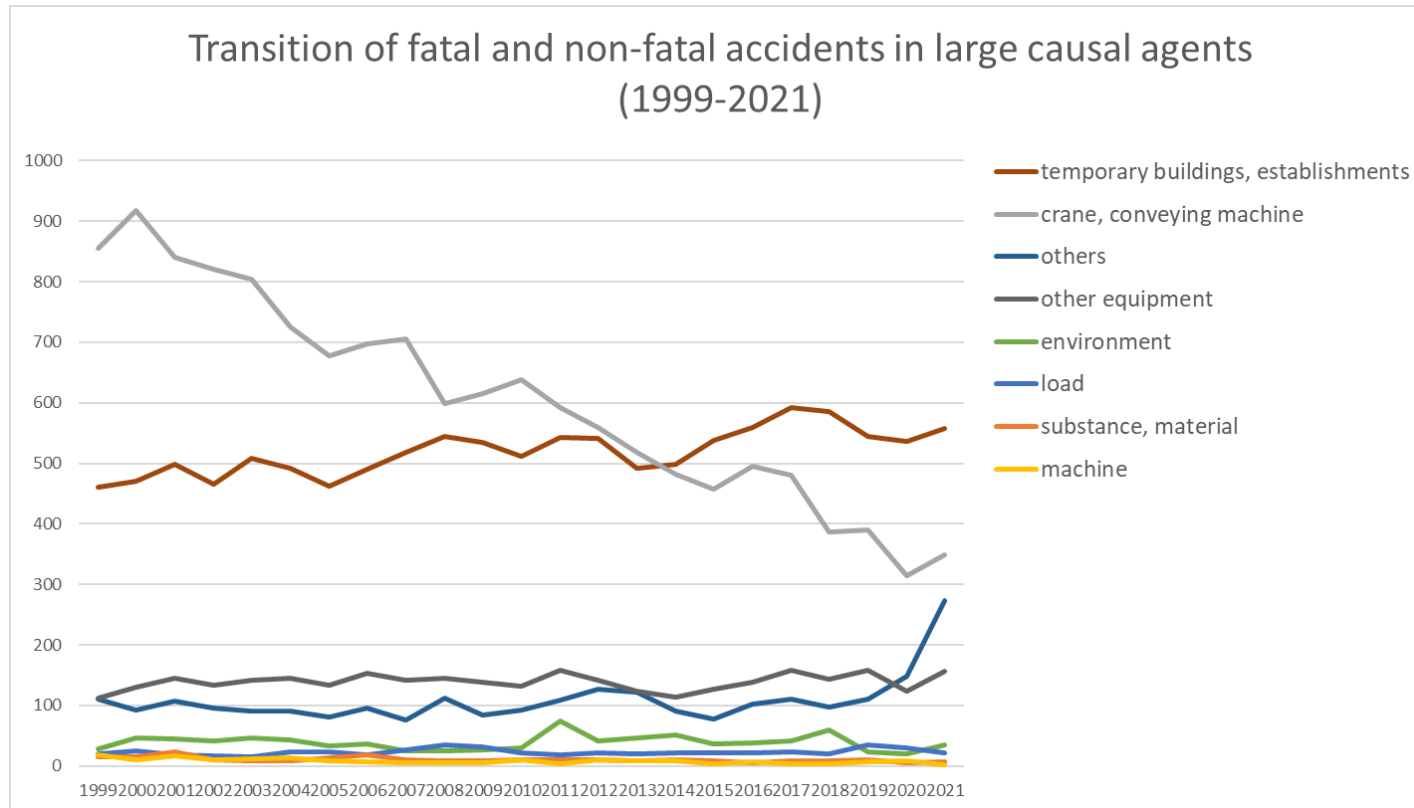
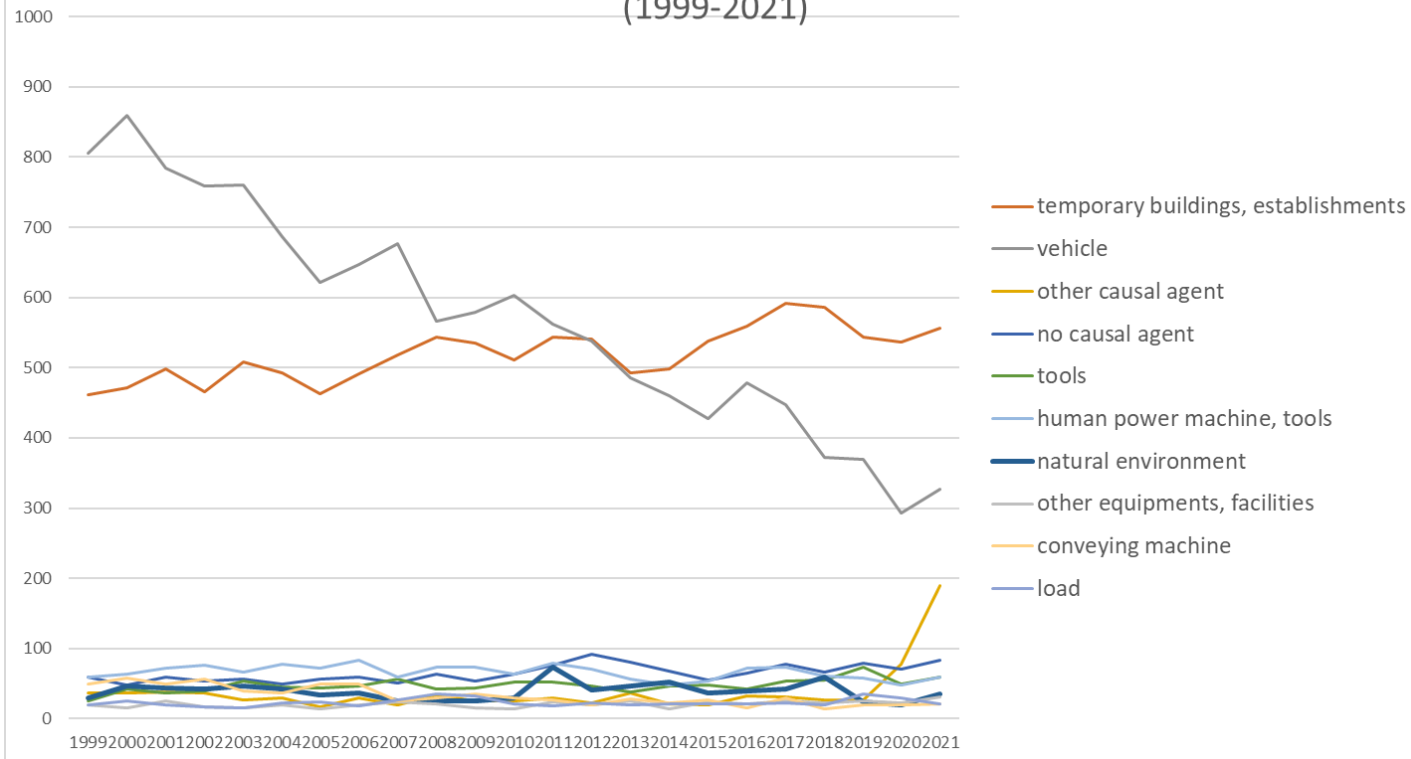


Transition of fatal and non-fatal accidents in each element like as causal agents, type of accidents, etc. in code no. 09 financial business/advertisement (1999-2021)



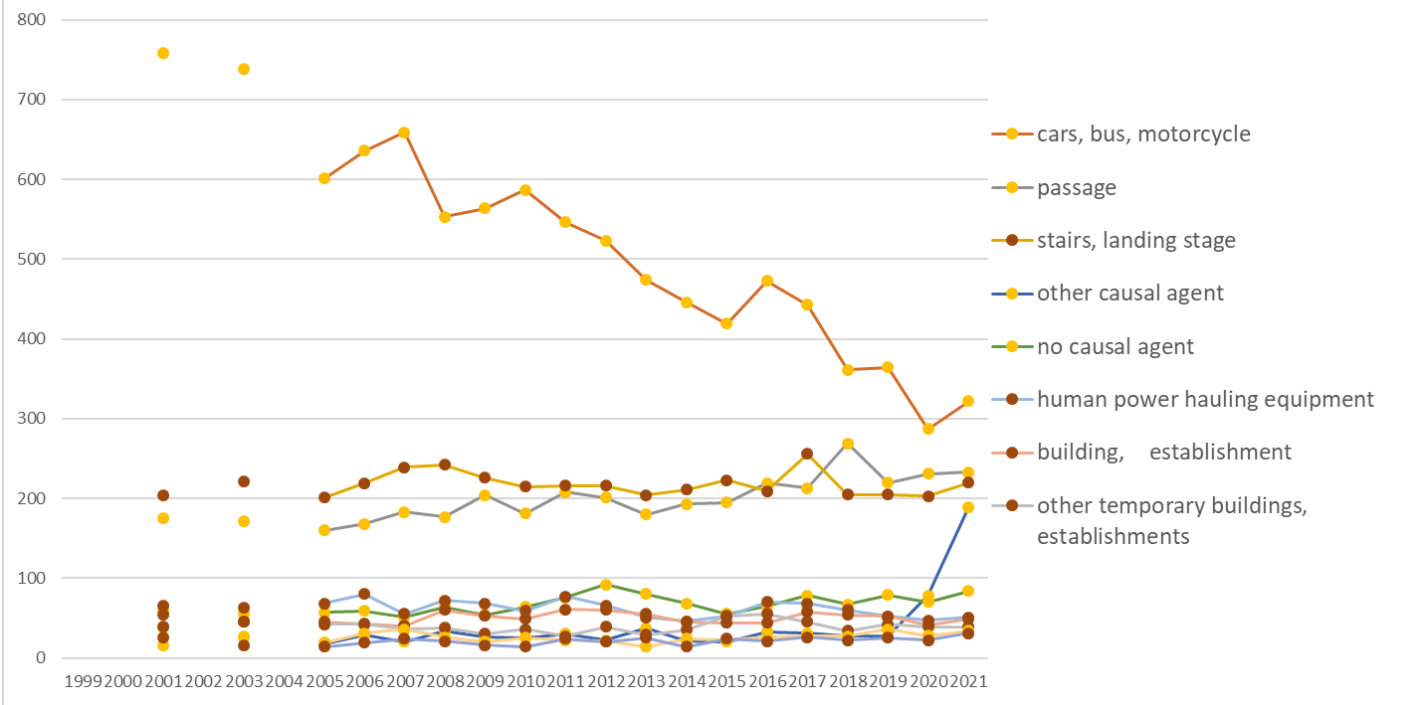
Transition of fatal and non-fatal accidents in large causal agents in code no. 09 financial business/advertisement (1999-2021)

Transition of fatal and non-fatal accidents in top 10 middle causal agents
(1999-2021)



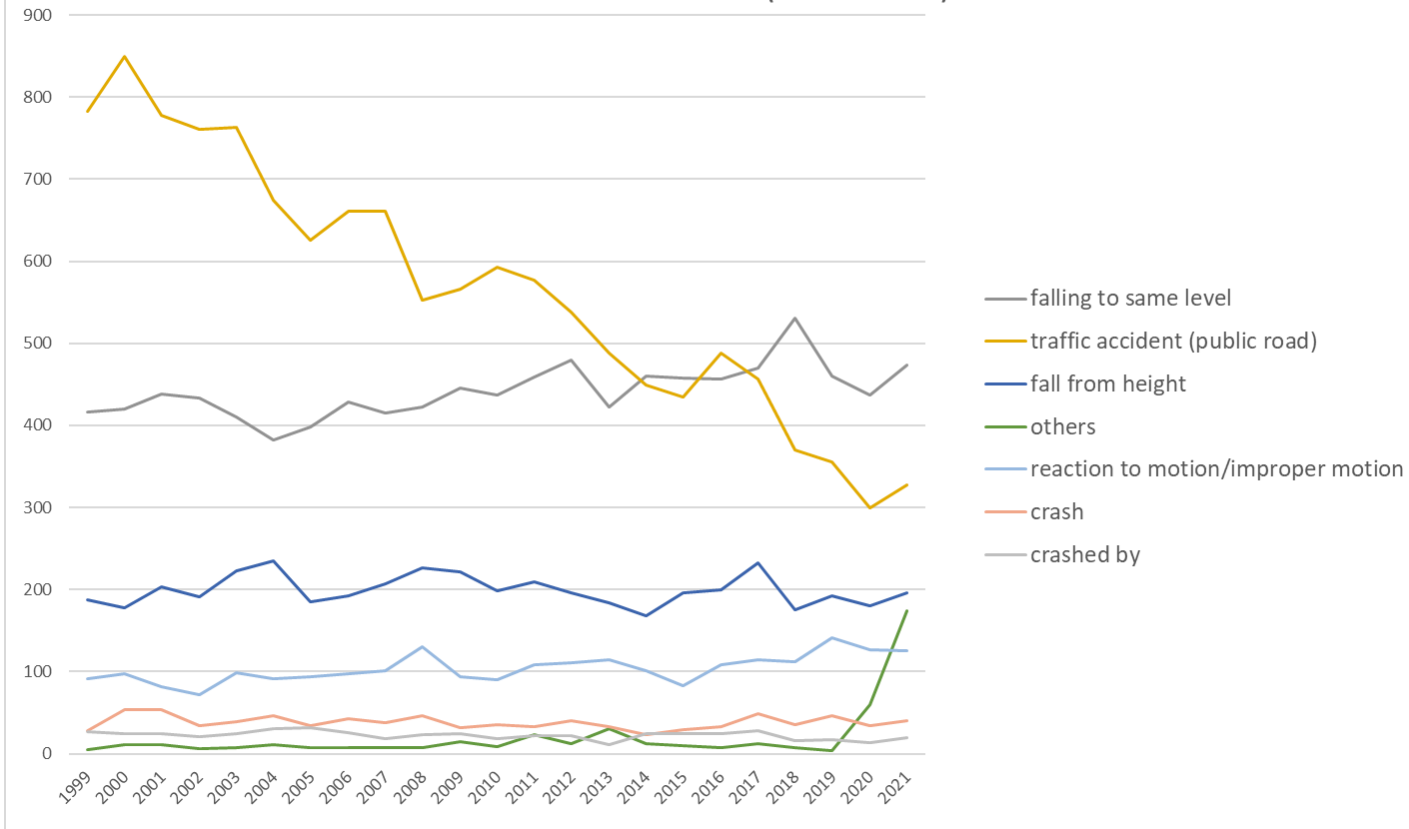
Transition of fatal and non-fatal accidents in middle causal agents in code no. 09 financial business/advertisement (1999-2021)

Transition of fatal and non-fatal accidents in top 10 small causal agents (1999-2021)



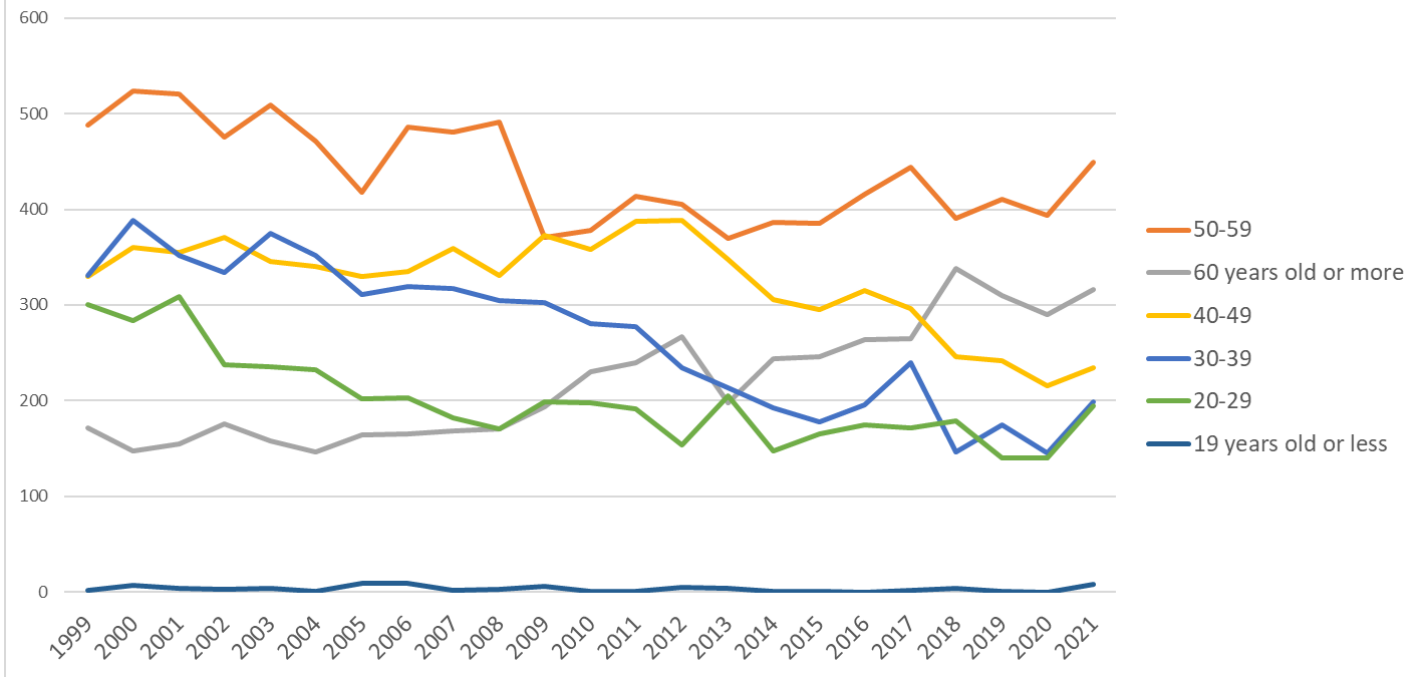
Transition of fatal and non-fatal accidents in small causal agents in code no. 09 financial business/advertisement (1999-2021)

Transition of fatal and non-fatal accidents in top 7 type of accidents
(1999-2021)



Transition of fatal and non-fatal accidents in type of accidents in code no. 09 financial business/advertisement (1999-2021)

Transition of fatal and non-fatal accidents in workers ages (1999-2021)



Transition of fatal and non-fatal accidents in workers ages in code no. 09 financial business/advertisement (1999-2021)

17	traffic accident (public road)	783	849	778	761	763	674	626	661	661	552	566	593	577	538	488	449	435	488	456	370	355	300	327	13,050	traffic accident (public road)	
01	fall from height	188	178	204	191	223	235	185	193	207	227	222	198	209	196	184	168	196	200	233	175	192	180	196	4,580	fall from height	
90	others	5	11	11	6	7	11	8	8	8	8	15	9	23	12	31	12	10	7	12	8	4	60	174	460	others	
19	reaction to motion/improper motion	92	97	82	72	99	91	94	97	101	130	94	90	108	111	114	101	83	109	115	112	141	127	125	2,385	reaction to motion/improper motion	
03	crash	28	54	54	34	39	47	34	43	38	46	32	36	33	40	33	23	30	33	49	36	46	34	40	882	crash	
06	crashed by	27	24	25	21	25	31	32	26	19	23	24	19	22	22	11	24	24	24	28	16	17	13	20	517	crashed by	
07	caught in/between	17	31	32	27	17	21	25	21	21	29	19	23	21	14	17	12	14	13	17	17	18	14	13	453	caught in/between	
08	cut	19	15	18	17	13	13	13	8	9	5	7	14	10	15	9	10	3	11	6	3	10	7	11	246	cut	
04	struck by flying or falling object	14	10	17	10	16	16	10	10	8	14	7	12	14	11	8	6	6	5	16	13	10	4	9	246	struck by flying or falling object	
11	contact to high/low-temperature	9	2	4	6	1	5	1	4	3	1	3	4	2	4	6	4	3	3	4	11	3	2	5	90	contact to high/low-temperature	
05	collapse	1	6	6	7	6	6		5	10	5	2	3	4	4	4	2	2	4	6	4	7	3	3	100	collapse	
18	traffic accident (others)	10	5	1	3	3	1	1	4	2	3	4	4	5	2	5	1	1	5	2	3	7		3	75	traffic accident (others)	
12	contact to harmful substance	2		3	1			1	1		1				1	1	1	1	1	1		3	1	2	21	contact to harmful substance	
99	unclassifiable	10	5	12	5	5	8	3	4	5	4	4	3	1	5	4	1	3	5	2	2	5	1		97	unclassifiable	
10	drown	1			1					1				22												25	drown
09	injury to the sole of	1	1		2	1			3	1	1					1	1	1	2	1	1					17	injury to the sole

5	100-299	296	282	225	198	199	184	187	190	178	168	133	167	172	153	176	153	177	164	171	177	139	117	144	4,150	100-299
1	9 workers or less	160	163	148	156	164	173	136	126	122	144	138	128	137	143	118	128	81	112	126	129	133	123	132	3,120	9 workers or less
	total	1,623	1,710	1,695	1,597	1,628	1,542	1,434	1,517	1,509	1,472	1,446	1,446	1,510	1,454	1,339	1,277	1,270	1,366	1,419	1,304	1,279	1,185	1,401	33,423	total

Transition of fatal and non-fatal accidents in months in code no. 09 financial business/advertisement (1999-2021)

code	Month	1999	2000	2001	2002	2003	2004	2005	2006	2007	2008	2009	2010	2011	2012	2013	2014	2015	2016	2017	2018	2019	2020	2021	total	Month
8	August	151	139	125	135	101	120	108	109	122	86	103	90	125	101	90	83	103	121	112	97	96	74	145	2,536	August
1	January	142	135	166	115	157	138	118	134	119	145	122	127	131	152	129	107	110	132	137	151	116	98	141	3,022	January
12	December	145	134	147	121	155	106	100	115	115	104	129	119	111	117	100	88	108	104	114	96	114	160	132	2,734	December
5	May	116	149	158	132	154	114	120	111	122	103	109	118	97	124	132	110	93	115	99	103	100	57	124	2,660	May
6	June	151	162	169	145	154	135	145	140	132	121	142	128	107	112	119	114	97	109	128	110	103	122	118	2,963	June
4	April	127	132	136	145	142	134	111	134	124	132	126	134	128	114	96	112	95	107	113	95	104	57	116	2,714	April
7	July	136	154	130	159	135	135	107	153	121	147	118	143	147	126	112	95	98	127	96	104	136	113	113	2,905	July
3	March	118	164	123	118	108	137	144	115	139	140	133	141	147	140	98	118	110	105	123	117	90	124	107	2,859	March
11	November	132	130	123	138	130	110	116	118	157	114	100	106	133	125	108	100	116	130	109	100	94	81	105	2,675	November
9	September	144	130	136	120	120	143	121	125	119	98	115	105	125	92	115	105	97	100	113	100	109	102	102	2,636	September
10	October	122	129	150	139	147	124	111	130	123	129	141	122	111	116	120	103	111	111	138	109	112	102	100	2,800	October
2	February	139	152	132	130	125	146	133	133	116	153	108	113	148	135	120	142	132	105	137	122	105	95	98	2,919	February
	total	1,623	1,710	1,695	1,597	1,628	1,542	1,434	1,517	1,509	1,472	1,446	1,446	1,510	1,454	1,339	1,277	1,270	1,366	1,419	1,304	1,279	1,185	1,401	33,423	total

Transition of fatal and non-fatal accidents in prefectures in code no. 09 financial business/advertisement (1999-2021)

code	Prefecture	1999	2000	2001	2002	2003	2004	2005	2006	2007	2008	2009	2010	2011	2012	2013	2014	2015	2016	2017	2018	2019	2020	2021	total	Prefecture
13	Tokyo	169	180	188		165		170	159	164	204	170	196	199	176	167	162	179	176	197	168	160	139	185	3,673	Tokyo
27	Osaka	163	184	171		177		152	162	146	136	155	123	136	136	116	121	134	120	133	126	132	94	135	2,952	Osaka
23	Aichi	86	99	96		93		79	72	69	83	71	73	71	72	84	54	65	78	73	77	79	93	81	1,648	Aichi

12	Chiba	57	59	60		53		33	46	54	39	41	58	51	52	67	49	46	62	41	30	60	41	79	1,078	Chiba
40	Fukuoka	77	75	92		97		82	107	87	88	86	78	78	74	78	76	70	55	84	71	69	83	74	1,681	Fukuoka
14	Kanagawa	81	94	74		60		60	47	58	60	77	49	67	75	61	67	56	78	71	57	59	50	71	1,372	Kanagawa
11	Saitama	56	44	77		73		55	81	68	53	52	57	65	67	56	47	62	62	62	62	50	49	63	1,261	Saitama
1	Hokkaido	105	86	79		83		64	69	59	73	62	57	71	75	54	50	60	60	60	57	51	41	46	1,362	Hokkaido
34	Hiroshima	45	48	48		48		36	53	30	35	43	27	31	23	34	37	33	54	38	34	29	40	44	810	Hiroshima
28	Hyogo	56	77	64		67		63	63	65	48	64	55	58	41	42	63	49	52	61	61	40	44	41	1,174	Hyogo
22	Shizuoka	48	37	33		44		23	31	39	41	40	44	57	48	36	31	34	28	40	37	46	16	38	791	Shizuoka
8	Ibaraki	31	29	23		29		24	32	19	23	22	31	30	21	22	15	24	24	18	27	20	22	31	517	Ibaraki
4	Miyagi	30	33	36		37		35	40	52	36	31	33	48	42	43	39	35	32	33	26	25	24	29	739	Miyagi
26	Kyoto	54	64	55		47		45	41	56	42	28	35	48	35	29	21	28	22	22	23	32	32	26	785	Kyoto
46	Kagoshima	18	14	13		28		20	25	16	16	11	25	16	24	24	12	15	23	23	18	15	18	25	399	Kagoshima
43	Kumamoto	37	30	27		24		26	17	21	22	28	27	19	29	16	16	21	30	22	25	30	16	24	507	Kumamoto
38	Ehime	23	24	10		13		15	16	19	18	25	28	16	23	15	21	14	19	29	30	13	13	24	408	Ehime
33	Okayama	32	28	48		24		26	19	29	37	24	27	18	25	15	36	13	23	26	18	20	21	23	532	Okayama
10	Gunma	22	33	26		29		22	20	28	21	20	20	24	20	17	25	24	19	21	14	14	19	23	461	Gunma
15	Niigata	25	32	19		26		24	31	19	29	34	38	27	22	37	14	21	26	25	25	24	28	22	548	Niigata
45	Miyazaki	17	32	23		28		17	32	22	27	15	14	23	22	14	16	6	6	14	18	10	19	21	396	Miyazaki
25	Shiga	14	9	11		15		17	10	8	2	6	10	3	9	16	9	10	15	5	11	10	7	21	218	Shiga
24	Mie	24	16	23		25		13	26	21	13	17	14	21	21	25	23	18	18	21	12	18	18	20	407	Mie
21	Gifu	14	13	26		12		14	17	14	25	20	15	22	23	16	10	7	7	21	16	13	13	18	336	Gifu
35	Yamaguchi	24	33	33		22		22	21	17	19	18	22	23	13	10	17	18	15	8	14	10	13	17	389	Yamaguchi
36	Tokushima	19	9	21		4		6	6	14	5	7	11	13	10	10	6	6	7	6	6	4	4	17	191	Tokushima
7	Fukushima	14	8	14		23		30	18	24	15	27	22	22	16	18	15	12	21	15	21	11	21	14	381	Fukushima
20	Nagano	25	20	20		13		30	19	24	15	24	15	19	9	20	11	23	22	22	12	12	11	14	380	Nagano

17	Ishikawa	11	13	15		15		11	13	12	15	9	13	16	21	6	3	14	12	15	7	12	19	14	266	Ishikawa
42	Nagasaki	19	12	25		17		17	16	22	24	18	14	20	19	16	15	21	16	12	11	31	20	13	378	Nagasaki
9	Tochigi	20	24	19		17		16	21	22	22	19	23	18	16	13	12	9	18	13	18	10	18	13	361	Tochigi
47	Okinawa	9	4	2		9		7	10	11	10	12	11	10	17	8	12	7	5	14	16	5	4	13	196	Okinawa
32	Shimane	7	10	9		9		6	9	9	5	7	9	7	5	9	11	3	13	7	11	9	3	12	170	Shimane
2	Aomori	19	23	31		16		20	15	17	18	11	14	16	16	15	24	7	9	16	13	12	19	11	342	Aomori
29	Nara	11	15	12		12		16	15	22	21	12	14	20	18	11	14	12	12	18	9	18	12	11	305	Nara
41	Saga	13	21	15		25		12	11	14	14	12	13	6	16	15	14	12	13	14	13	13	12	10	288	Saga
19	Yamanashi	9	11	13		9		14	10	13	14	5	5	13	8	14	4	10	7	9	5	10	6	10	199	Yamanashi
31	Tottori	10	9	6		7		6	2	10	6	5	10	10	7	7	4		10	5	2	6	3	10	135	Tottori
30	Wakayama	17	24	21		18		17	25	20	15	17	17	11	14	11	10	11	16	18	16	13	11	9	331	Wakayama
3	Iwate	11	13	12		13		17	12	13	11	13	12	22	10	8	13	7	7	13	6	14	13	9	249	Iwate
5	Akita	10	15	12		19		10	10	12	11	10	12	10	6	6	6	11	9	10	6	4	8	8	205	Akita
37	Kagawa	21	23	16		16		19	15	24	10	10	14	10	12	15	14	17	6	9	9	10	5	7	282	Kagawa
16	Toyama	14	16	7		12		5	9	6	11	17	9	11	18	11	7	8	14	9	16	13	9	7	229	Toyama
39	Kochi	12	19	20		9		11	10	13	5	8	10	9	9	6	16	6	7	9	9	5	7	7	207	Kochi
44	Oita	20	16	27		13		14	11	9	10	16	10	7	8	10	13	8	13	18	19	20	6	5	273	Oita
6	Yamagata	9	14	13		19		9	13	9	16	15	16	13	13	8	10	17	15	11	11	12	11	4	258	Yamagata
18	Fukui	15	18	10		14		4	10	9	9	12	16	5	18	8	12	7	10	8	11	6	10	2	214	Fukui
	total	1,623	1,710	1,695		1,628		1,434	1,517	1,509	1,472	1,446	1,446	1,510	1,454	1,339	1,277	1,270	1,366	1,419	1,304	1,279	1,185	1,401	30,284	total

Data source : <https://anzeninfo.mhlw.go.jp/user/anzen/tok/anst00.htm>

Return to https://www.jisha.or.jp/english/statistics/202211_23.html