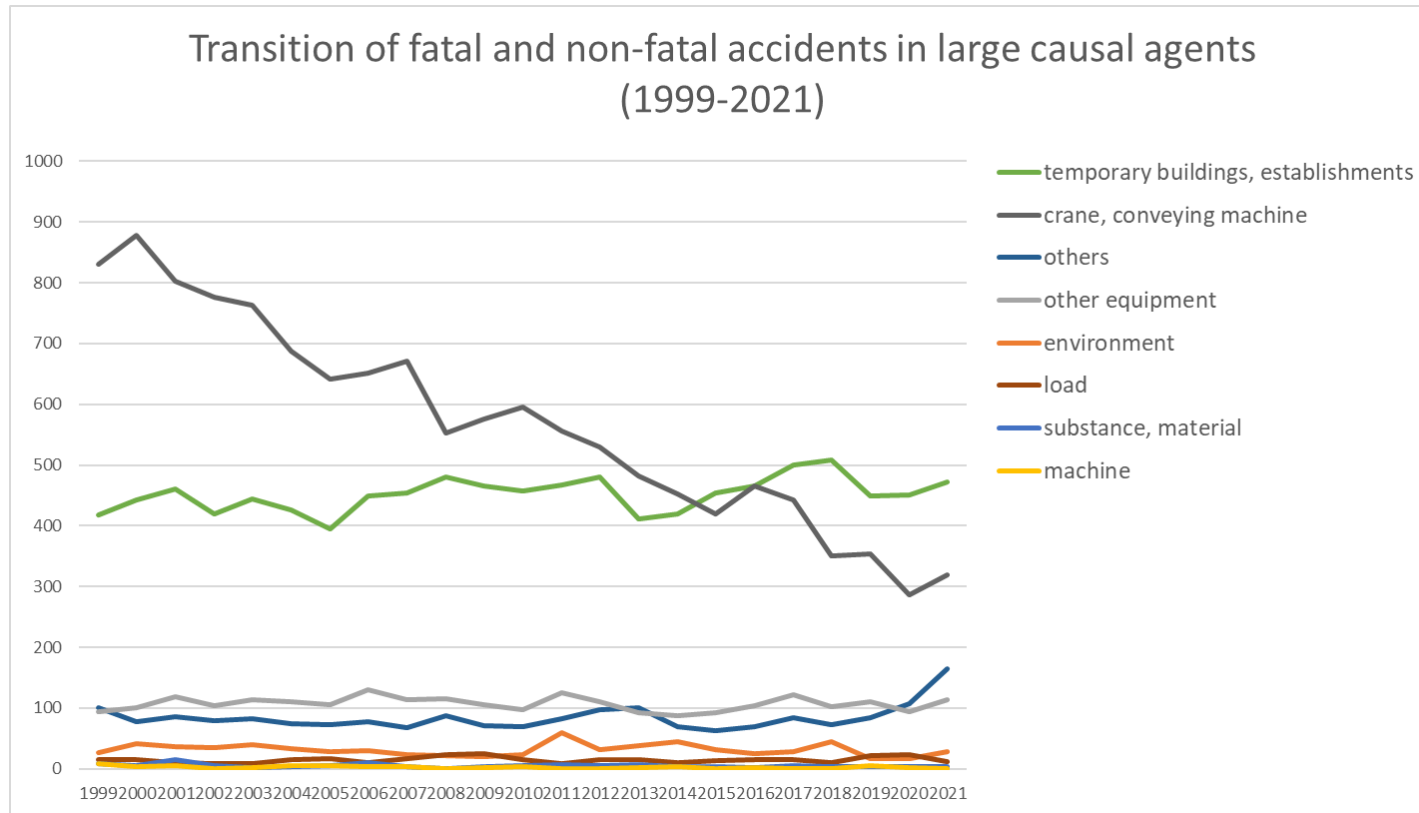
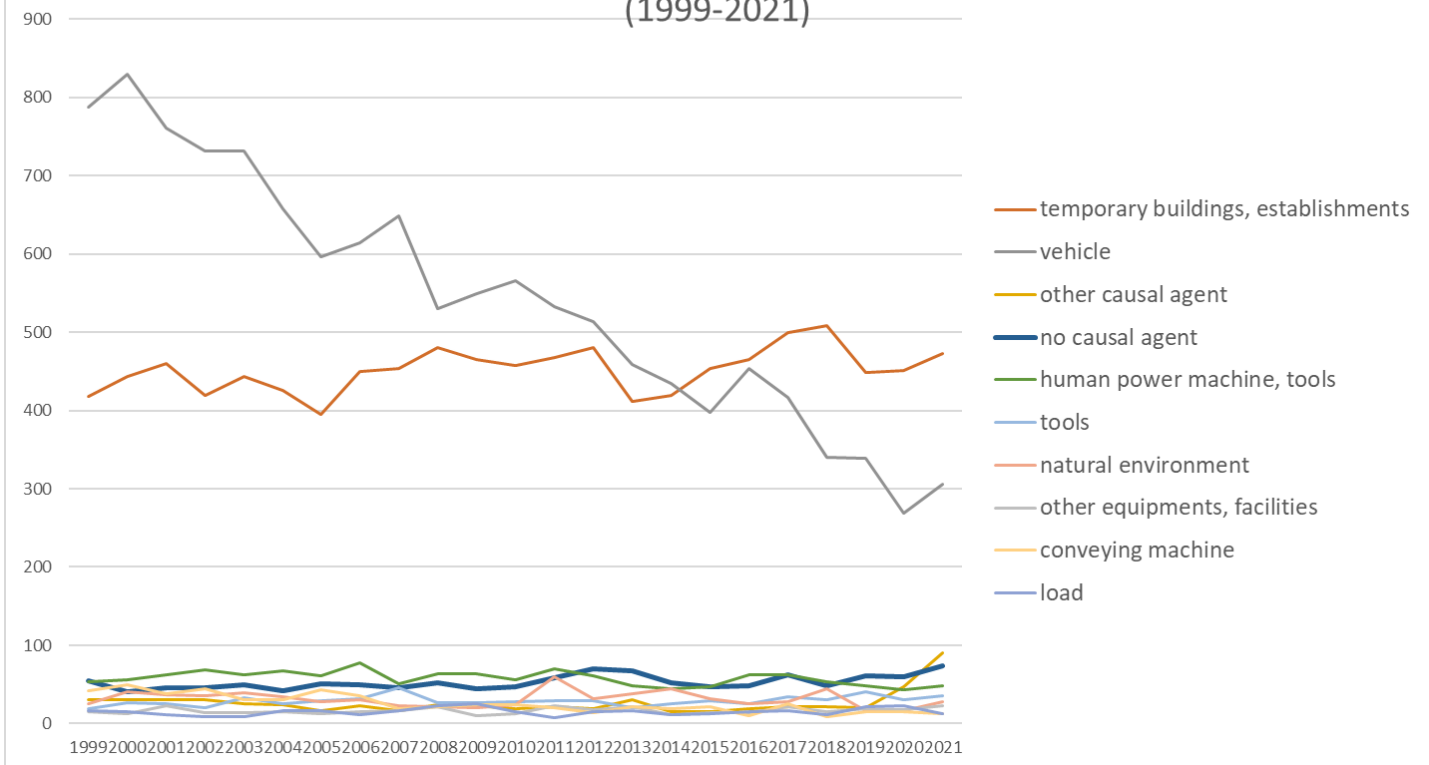


Transition of fatal and non-fatal accidents in each element like as causal agents, type of accidents, etc. in code no. 0901 financial business (1999-2021)



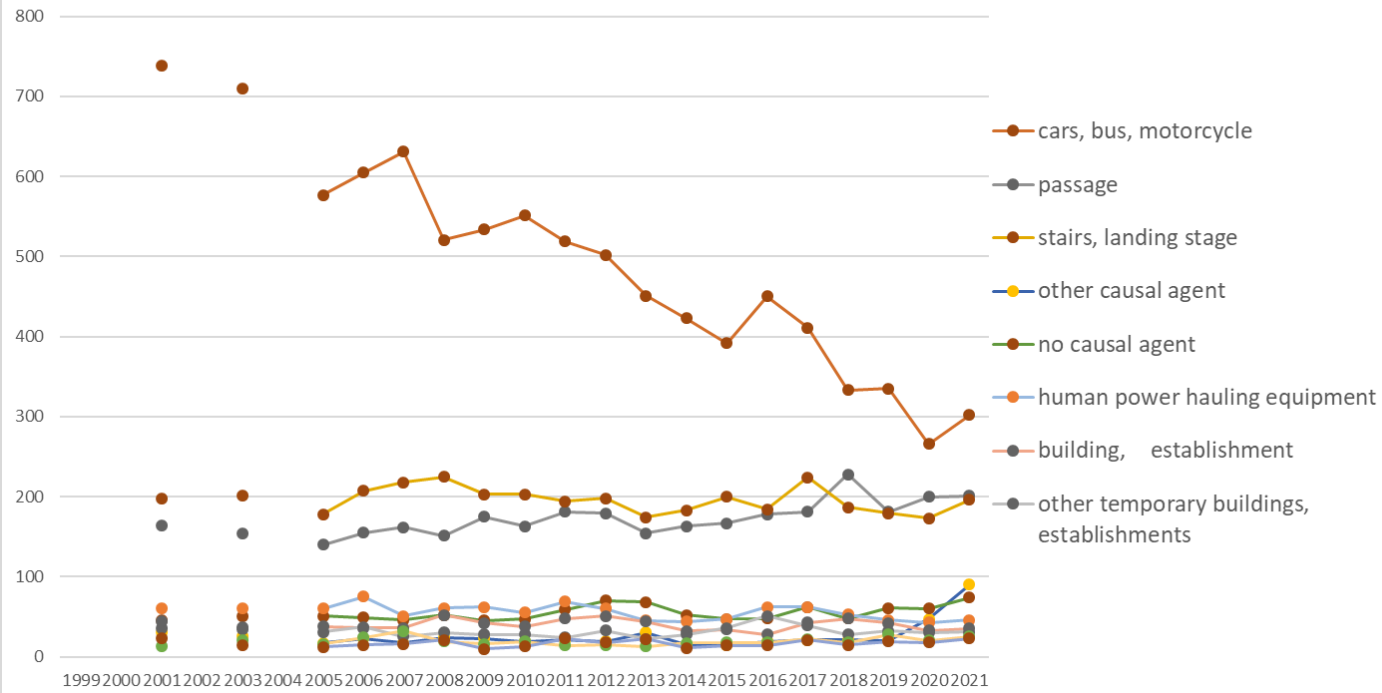
Transition of fatal and non-fatal accidents in large causal agents in code no. 0901 financial business (1999-2021)

Transition of fatal and non-fatal accidents in top 10 middle causal agents
(1999-2021)



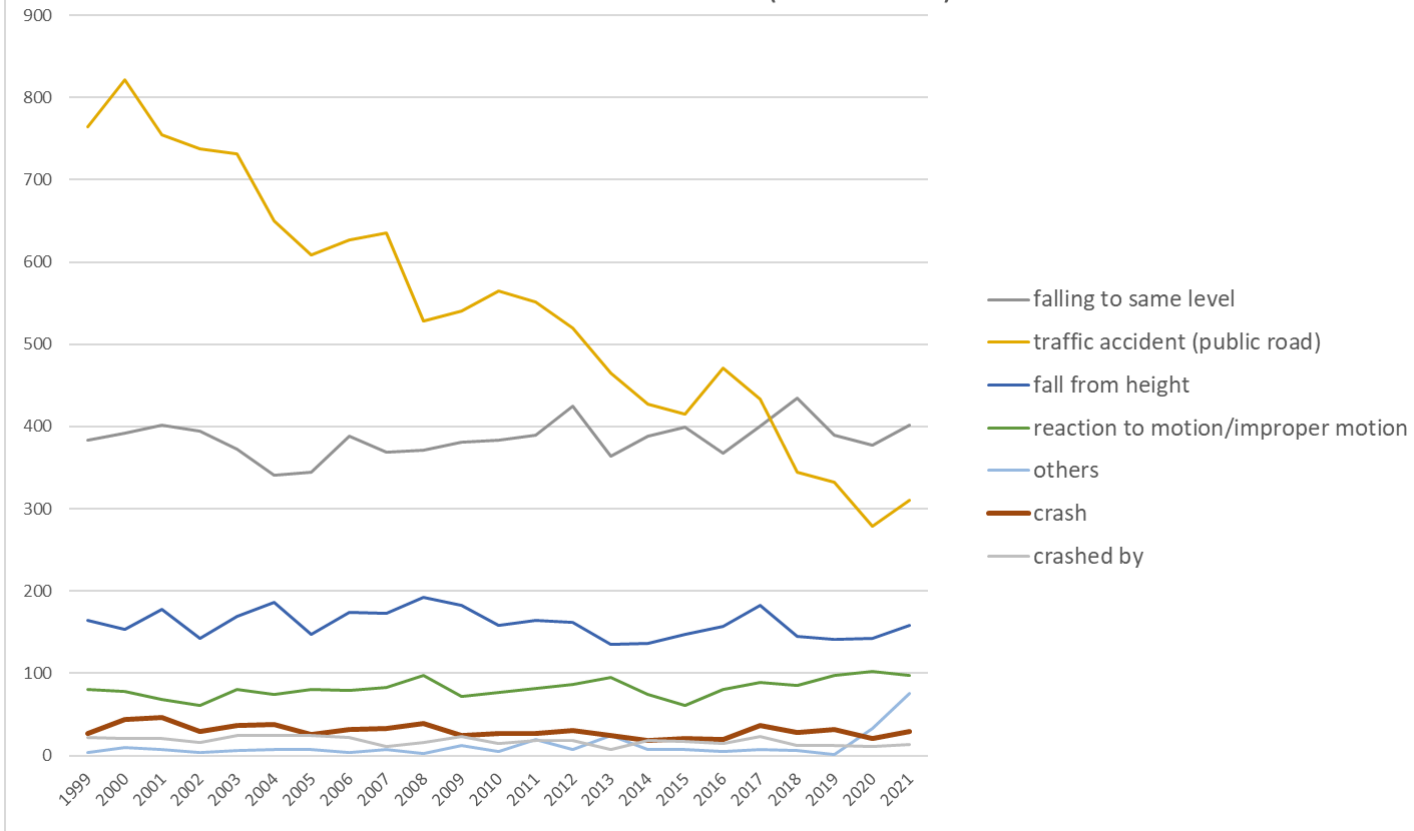
Transition of fatal and non-fatal accidents in middle causal agents in code no. 0901 financial business (1999-2021)

Transition of fatal and non-fatal accidents in top 10 small causal agents (1999-2021)



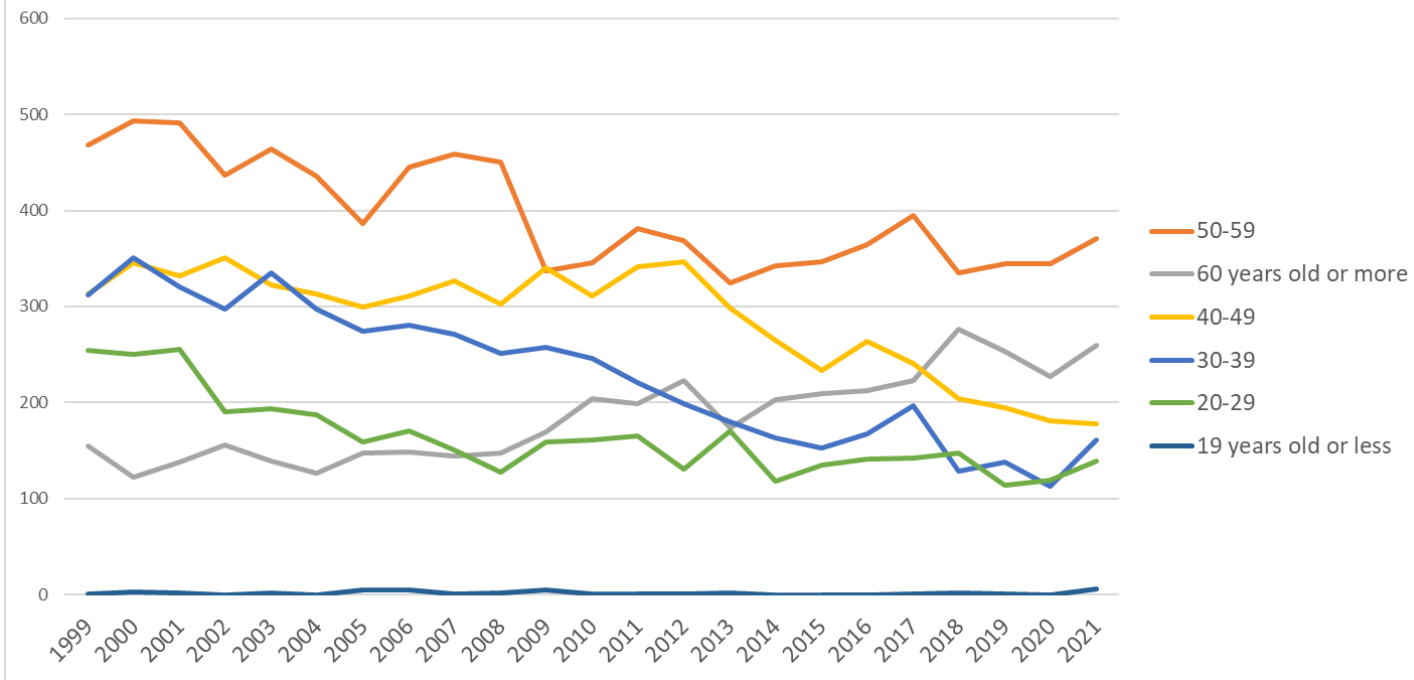
Transition of fatal and non-fatal accidents in small causal agents in code no. 0901 financial business (1999-2021)

Transition of fatal and non-fatal accidents in top 7 type of accidents
(1999-2021)



Transition of fatal and non-fatal accidents in type of accidents in code no. 0901 financial business (1999-2021)

Transition of fatal and non-fatal accidents in workers ages (1999-2021)



Transition of fatal and non-fatal accidents in workers ages in code no. 0901 financial business (1999-2021)

	facilities																							facilities	
372	slinging tool											1												1	slinging tool
511	explosive substance											1												1	explosive substance
111	engine																								engine
132	band sawing machine																								band sawing machine
133	wood planer machine																								wood planer machine
134	hollow chisel mortiser, wood borer																								hollow chisel mortiser, wood borer
135	chamfering machine, router, woodworking milling machine																								chamfering machine, router, woodworking milling machine
136	chain saw																								chain saw
141	leveling, transporting or loading machine																								leveling, transporting or loading machine
143	foundation work machine																								foundation work machine
144	hardening machine																								hardening machine
145	demolition machine																								demolition machine
146	vehicle for high lift work																								vehicle for high lift work
149	other construction machines																								other construction machines

17	traffic accident (public road)	764	821	754	737	732	650	608	627	635	528	541	565	551	520	465	427	415	471	433	345	332	279	311	12,511	traffic accident (public road)
01	fall from height	164	154	178	143	169	186	148	174	173	193	183	158	165	162	135	136	148	157	183	145	141	143	158	3,696	fall from height
19	reaction to motion/improper motion	81	78	68	61	80	74	81	79	83	98	72	77	82	87	95	75	61	80	89	85	98	103	98	1,885	reaction to motion/improper motion
90	others	4	10	7	4	6	8	8	4	8	3	12	5	20	7	25	7	7	5	7	6	2	33	76	274	others
03	crash	27	44	47	30	37	38	26	32	33	39	25	27	27	31	24	19	21	20	37	28	32	21	29	694	crash
06	crashed by	22	21	21	16	24	25	25	22	11	16	23	15	19	18	8	18	17	15	23	12	12	11	13	407	crashed by
07	caught in/between	13	19	16	13	8	12	14	11	18	17	11	17	15	6	9	6	5	8	5	15	12	7	9	266	caught in/between
04	struck by flying or falling object	6	6	10	6	9	6	5	8	6	6	5	5	11	4	6	3	1	4	9	7	3	2	7	135	struck by flying or falling object
08	cut	10	6	7	6	6	4	5	4	3	3	5	5	4		4	3		2	2	1	5	1	3	89	cut
18	traffic accident (others)	10	5	1	3	3	1	1	3	2	3	3	3	4	2	3	1	1	5	2	3	7		3	69	traffic accident (others)
11	contact to high/low-temperature	5	1	3	6	1	4	1	2	3	1		4	1	3	3	3	1	3	2	7		1	3	58	contact to high/low-temperature
05	collapse	1	2	5	3	3	4		3	5	1	2	2	1	4	3	1		4	4	2	2	2	2	56	collapse
12	contact to harmful substance	2		1	1			1	1							1	1						3	1	12	contact to harmful substance
99	unclassifiable	9	3	9	4	5	5	2	3	3	2	3	2	1	1	3	1	1	4	2	1	5	1		70	unclassifiable
10	drown	1			1					1				18											21	drown
09	injury to the sole of	1	1		2				1		1					1			2	1	1				11	injury to the sole

5	100-299	285	267	207	188	181	167	171	181	158	143	104	150	152	132	145	137	154	136	150	139	102	76	103	3,628	100-299
1	9 workers or less	105	107	97	89	94	104	88	75	79	82	84	70	75	79	65	62	36	58	74	77	67	72	64	1,803	9 workers or less
	total	1,503	1,564	1,538	1,431	1,456	1,359	1,270	1,362	1,353	1,282	1,268	1,269	1,308	1,270	1,150	1,091	1,077	1,148	1,199	1,093	1,045	984	1,115	29,135	total

Transition of fatal and non-fatal accidents in months in code no. 0901 financial business (1999-2021)

code	Month	1999	2000	2001	2002	2003	2004	2005	2006	2007	2008	2009	2010	2011	2012	2013	2014	2015	2016	2017	2018	2019	2020	2021	total	Month
1	January	136	123	152	98	140	125	106	122	105	123	96	117	118	136	109	89	91	113	116	127	90	77	120	2,629	January
12	December	132	126	133	104	132	93	96	104	102	87	118	109	96	108	88	79	98	96	94	84	100	135	111	2,425	December
6	June	148	143	148	129	141	116	129	127	117	105	127	111	94	94	105	96	86	92	111	87	88	104	99	2,597	June
3	March	108	156	110	108	97	114	121	107	123	118	114	126	128	124	76	99	96	85	101	99	67	107	94	2,478	March
5	May	106	135	149	127	140	107	106	95	111	91	94	98	80	106	117	91	71	94	81	92	79	40	92	2,302	May
4	April	118	124	126	129	128	115	102	123	107	120	112	117	113	102	89	96	82	88	96	72	77	46	91	2,373	April
7	July	121	140	118	144	119	116	95	133	116	132	106	123	131	112	94	78	84	105	77	80	112	99	90	2,525	July
2	February	128	140	118	118	110	132	121	118	109	131	91	101	121	115	94	122	108	85	110	107	93	75	89	2,536	February
10	October	113	118	135	123	131	111	99	120	109	119	128	111	93	102	108	89	89	95	115	93	95	86	89	2,471	October
11	November	121	116	116	125	117	97	102	105	146	95	90	90	120	111	91	93	97	112	98	81	74	68	85	2,350	November
8	August	142	124	109	118	92	107	92	99	103	76	92	77	107	79	80	72	88	99	96	86	81	57	82	2,158	August
9	September	130	119	124	108	109	126	101	109	105	85	100	89	107	81	99	87	87	84	104	85	89	90	73	2,291	September
	total	1,503	1,564	1,538	1,431	1,456	1,359	1,270	1,362	1,353	1,282	1,268	1,269	1,308	1,270	1,150	1,091	1,077	1,148	1,199	1,093	1,045	984	1,115	29,135	total

Transition of fatal and non-fatal accidents in prefectures in code no. 0901 financial business (1999-2021)

code	Prefecture	1999	2000	2001	2002	2003	2004	2005	2006	2007	2008	2009	2010	2011	2012	2013	2014	2015	2016	2017	2018	2019	2020	2021	total	Prefecture
13	Tokyo	147	154	157		149		140	131	142	152	129	151	151	133	117	117	115	125	145	126	102	103	132	2,818	Tokyo
27	Osaka	146	169	161		160		134	153	129	113	139	106	118	118	98	102	112	91	115	112	109	80	106	2,571	Osaka
23	Aichi	78	87	89		79		71	62	63	73	64	63	63	64	68	47	56	63	53	61	62	63	64	1,393	Aichi

11	Saitama	52	39	71		65		53	72	62	45	50	51	57	61	53	40	55	51	50	48	43	44	53	1,115	Saitama
40	Fukuoka	73	64	76		87		65	97	78	70	77	73	64	66	66	64	60	43	66	59	53	57	51	1,409	Fukuoka
14	Kanagawa	74	85	67		56		54	43	45	53	64	39	56	66	51	51	48	70	62	43	47	40	50	1,164	Kanagawa
12	Chiba	55	57	57		45		29	43	47	38	41	50	42	45	60	45	42	56	36	26	49	35	46	944	Chiba
1	Hokkaido	100	78	75		69		60	57	53	66	50	52	66	72	51	43	54	53	49	46	44	37	40	1,215	Hokkaido
28	Hyogo	53	71	63		62		59	55	61	45	58	52	49	33	34	53	46	43	57	55	37	37	36	1,059	Hyogo
34	Hiroshima	44	42	44		38		30	50	29	33	40	23	27	20	30	35	30	48	32	29	26	33	35	718	Hiroshima
22	Shizuoka	44	35	31		38		20	27	33	34	32	37	52	45	32	28	30	24	35	32	39	15	35	698	Shizuoka
8	Ibaraki	28	27	23		29		22	23	16	20	18	27	26	18	22	14	22	23	15	24	18	19	28	462	Ibaraki
4	Miyagi	28	32	29		36		33	37	49	32	30	31	39	33	36	31	32	25	27	25	24	21	24	654	Miyagi
26	Kyoto	52	60	51		39		39	37	53	36	27	23	41	31	23	17	22	17	19	17	27	24	22	677	Kyoto
33	Okayama	30	25	43		23		24	18	25	34	22	21	16	19	15	31	13	21	22	17	19	21	21	480	Okayama
43	Kumamoto	35	29	21		24		25	16	15	21	21	23	17	25	15	14	17	28	18	20	28	15	21	448	Kumamoto
10	Gunma	20	27	25		28		18	19	26	21	18	19	20	18	15	23	21	17	17	13	12	19	21	417	Gunma
46	Kagoshima	18	13	12		26		20	24	16	15	8	25	14	22	20	11	15	21	21	17	15	16	21	370	Kagoshima
24	Mie	23	13	20		20		11	24	19	12	17	14	20	20	25	20	17	15	21	12	16	17	20	376	Mie
15	Niigata	25	32	15		22		20	26	18	26	29	37	24	19	36	13	21	24	23	23	22	22	19	496	Niigata
45	Miyazaki	16	30	22		25		15	29	20	23	13	13	20	17	13	15	5	5	13	16	6	17	19	352	Miyazaki
38	Ehime	22	23	9		9		12	14	15	15	25	26	15	20	13	19	13	18	24	23	11	12	18	356	Ehime
21	Gifu	14	12	23		12		14	16	13	24	17	14	21	19	15	9	6	5	20	13	12	11	18	308	Gifu
35	Yamaguchi	23	32	32		20		20	21	17	17	17	22	21	13	9	17	16	15	7	14	10	13	16	372	Yamaguchi
20	Nagano	22	19	18		11		22	17	19	14	20	12	18	9	20	8	22	21	22	12	11	11	13	341	Nagano
9	Tochigi	18	22	16		14		15	20	20	21	16	22	18	16	13	10	6	17	11	17	7	15	13	327	Tochigi
17	Ishikawa	11	12	15		13		10	13	11	14	7	12	15	20	5	3	13	12	14	7	12	17	13	249	Ishikawa
36	Tokushima	18	9	19		4		6	6	12	5	7	11	12	10	10	6	5	5	5	6	3	4	13	176	Tokushima

7	Fukushima	13	7	14		23		27	15	23	14	26	20	19	15	15	15	12	18	15	17	8	18	12	346	Fukushima
42	Nagasaki	17	12	23		15		17	16	21	23	16	14	16	17	14	15	19	14	12	10	26	16	12	345	Nagasaki
25	Shiga	12	9	9		14		14	9	7	2	5	9	3	8	15	7	7	11	4	7	7	7	11	177	Shiga
2	Aomori	19	23	30		16		20	15	17	18	9	14	16	14	15	23	5	9	16	13	11	17	10	330	Aomori
19	Yamanashi	9	11	12		7		14	10	13	14	5	4	13	7	13	4	10	7	8	5	10	6	10	192	Yamanashi
32	Shimane	7	8	8		8		6	7	9	5	6	9	7	5	7	11	3	13	7	9	9	3	10	157	Shimane
47	Okinawa	5	3	1		9		5	7	6	7	7	7	8	15	7	11	5	2	11	8	1	3	9	137	Okinawa
41	Saga	11	20	15		24		11	10	13	14	12	13	5	15	13	14	11	12	13	12	13	11	8	270	Saga
29	Nara	11	12	12		12		14	15	18	19	12	12	19	16	8	12	11	11	15	8	15	9	8	269	Nara
3	Iwate	11	13	12		13		16	12	13	11	12	12	22	9	7	13	7	7	13	5	10	12	8	238	Iwate
5	Akita	9	14	11		18		8	10	11	8	10	12	9	5	6	5	8	9	9	6	4	7	8	187	Akita
37	Kagawa	18	21	14		15		17	14	23	9	9	14	9	11	14	13	14	6	8	7	10	5	7	258	Kagawa
39	Kochi	12	19	17		5		11	9	13	4	7	10	9	9	6	16	6	4	8	8	5	7	7	192	Kochi
31	Tottori	9	9	5		7		6	2	10	6	5	10	10	7	5	4		8	5	2	3	3	7	123	Tottori
30	Wakayama	17	23	17		13		15	20	18	14	15	15	10	14	10	9	10	15	14	12	10	9	6	286	Wakayama
6	Yamagata	9	12	11		19		9	13	9	16	14	13	12	13	8	10	15	15	11	10	10	11	4	244	Yamagata
44	Oita	19	16	27		12		12	10	9	9	15	9	3	6	5	8	7	9	14	17	12	4	4	227	Oita
16	Toyama	11	16	6		11		5	8	5	9	16	8	11	18	11	6	7	12	9	15	11	9	4	208	Toyama
18	Fukui	15	18	10		12		2	10	9	8	11	15	5	14	6	9	6	10	8	9	6	9	2	194	Fukui
	total	1,503	1,564	1,538		1,456		1,270	1,362	1,353	1,282	1,268	1,269	1,308	1,270	1,150	1,091	1,077	1,148	1,199	1,093	1,045	984	1,115	26,345	total

Data source : <https://anzeninfo.mhlw.go.jp/user/anzen/tok/anst00.htm>

Return to https://www.jisha.or.jp/english/statistics/202211_23.html