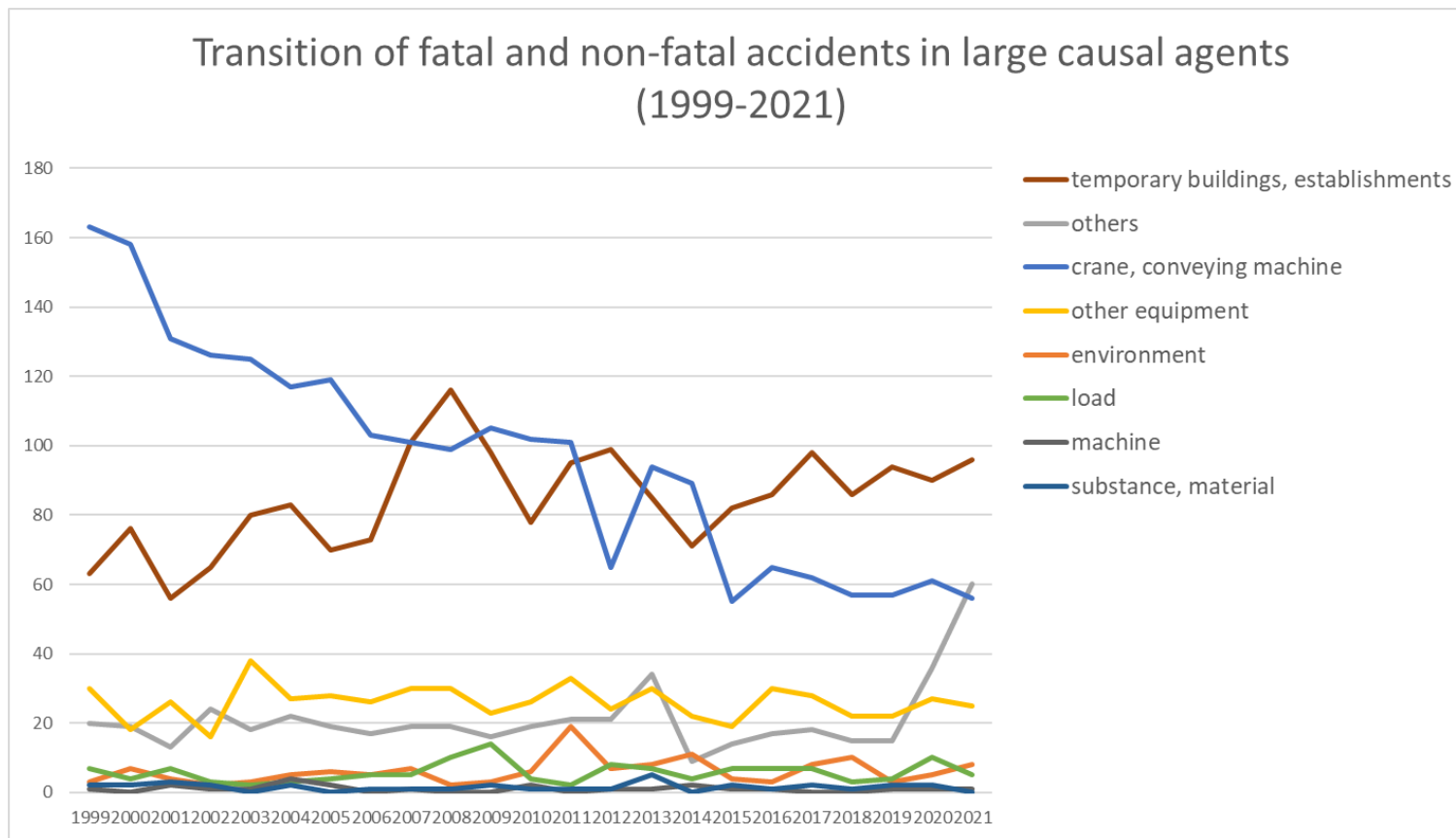
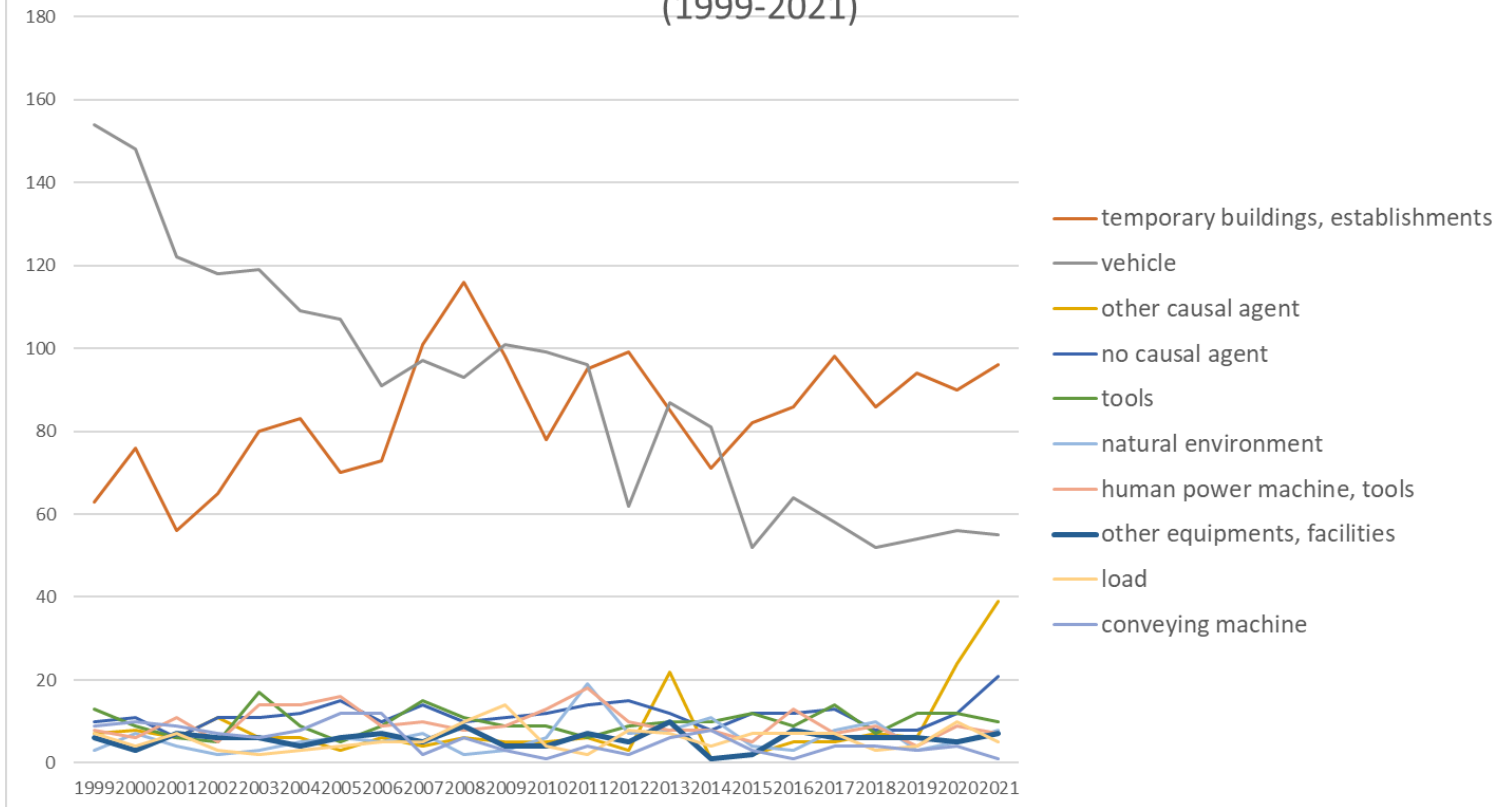


Transition of fatal and non-fatal accidents in each element like as causal agents, type of accidents, etc. in code no. 090101 banking/trust business (1999-2021)



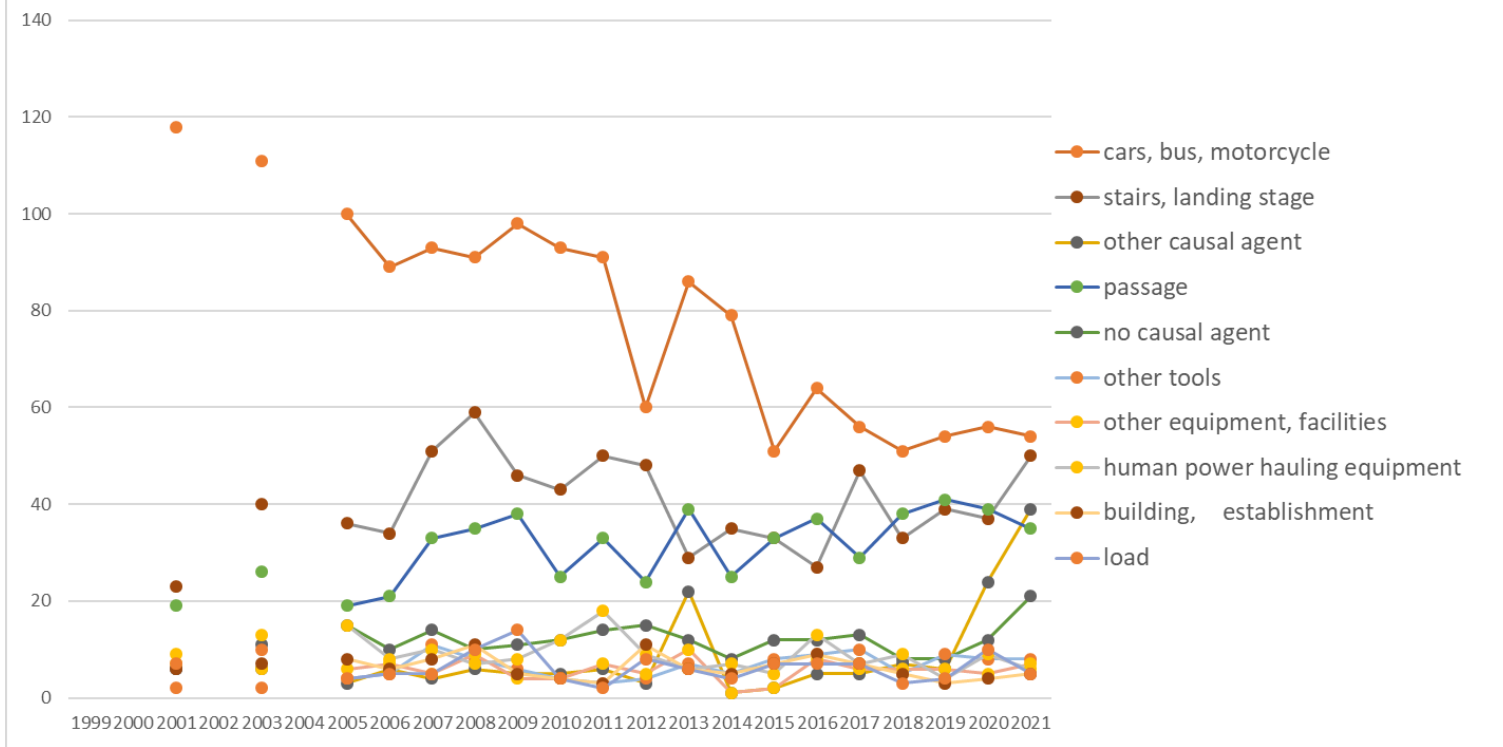
Transition of fatal and non-fatal accidents in large causal agents in code no. 090101 banking/trust business (1999-2021)

### Transition of fatal and non-fatal accidents in top 10 middle causal agents (1999-2021)



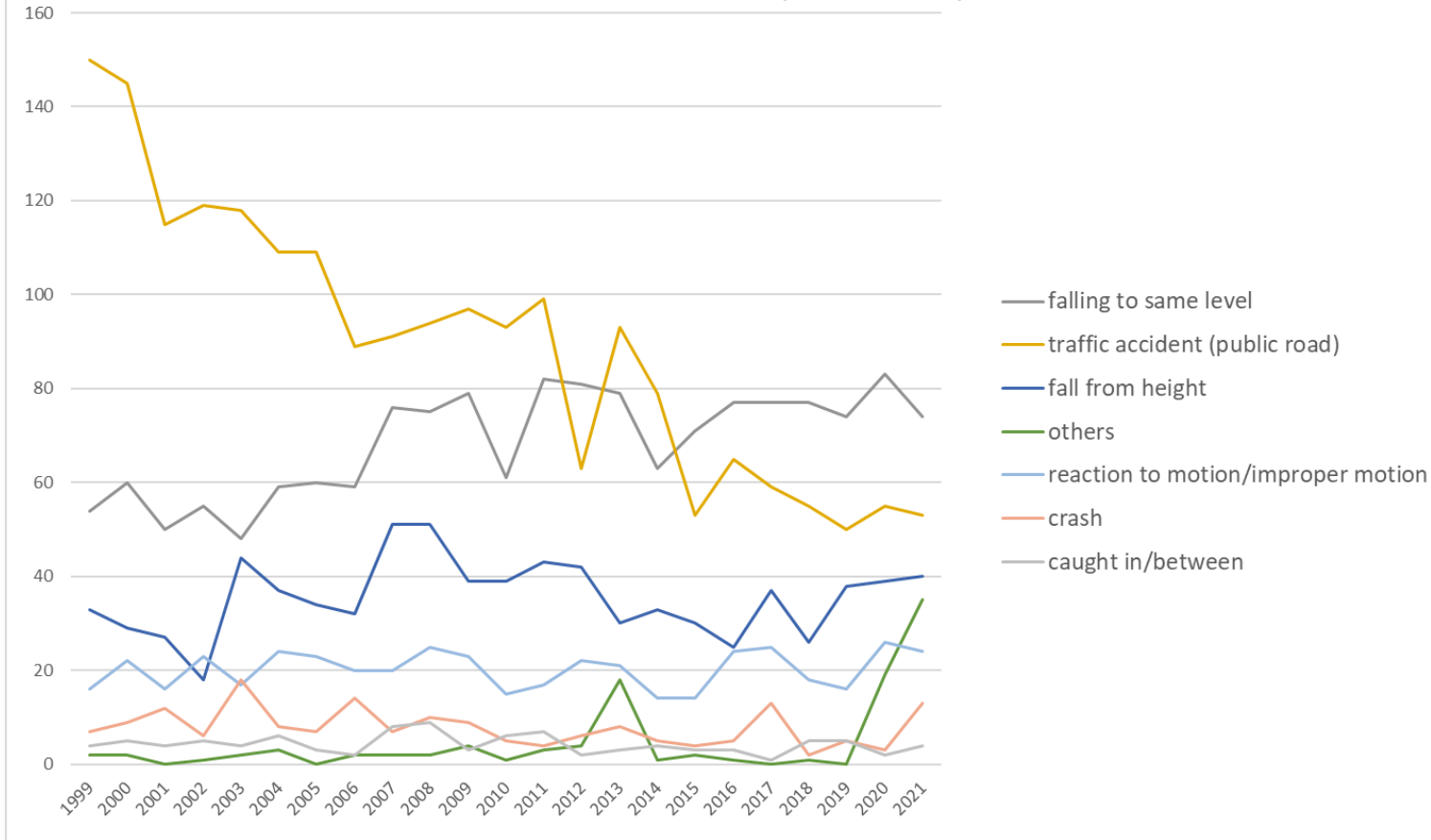
Transition of fatal and non-fatal accidents in middle causal agents in code no. 090101 banking/trust business (1999-2021)

## Transition of fatal and non-fatal accidents in top 10 small causal agents (1999-2021)



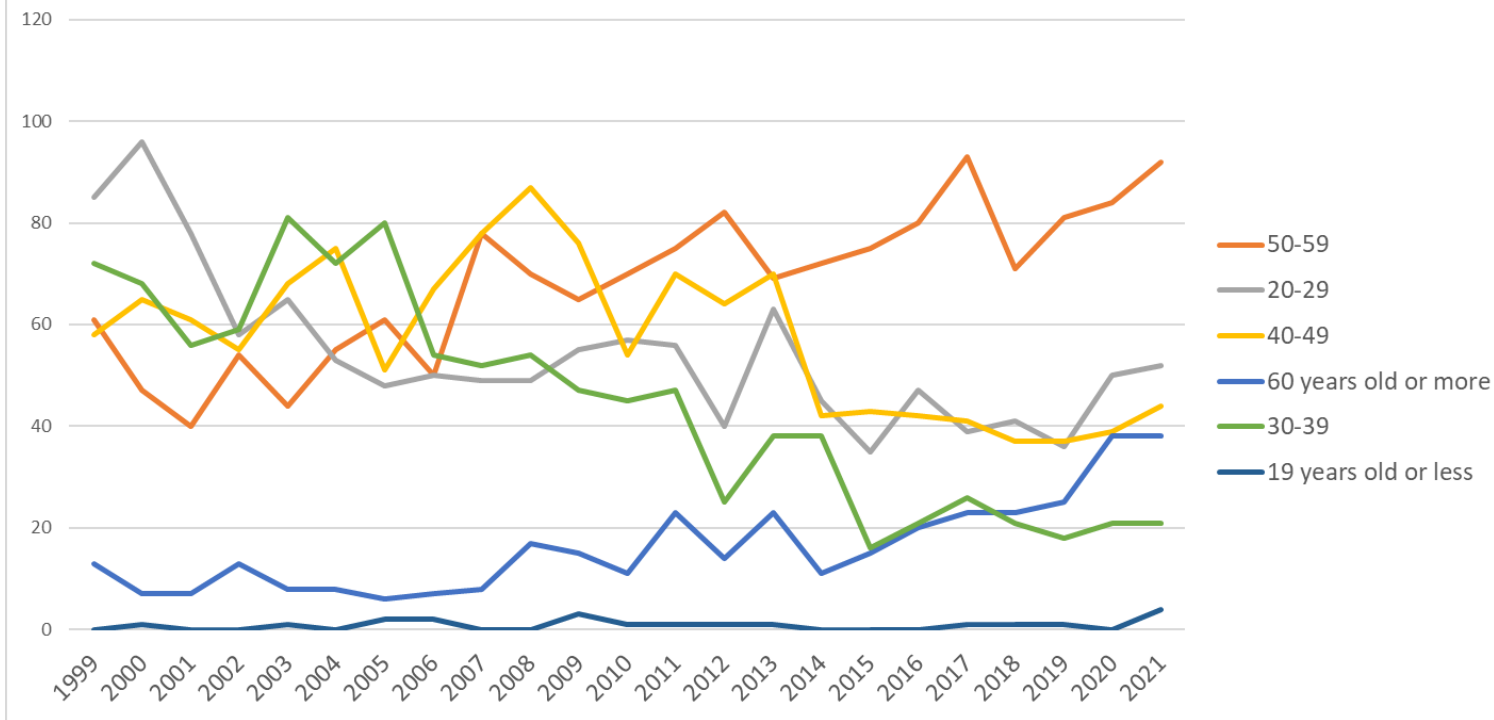
Transition of fatal and non-fatal accidents in small causal agents in code no. 090101 banking/trust business (1999-2021)

Transition of fatal and non-fatal accidents in top 7 type of accidents  
(1999-2021)



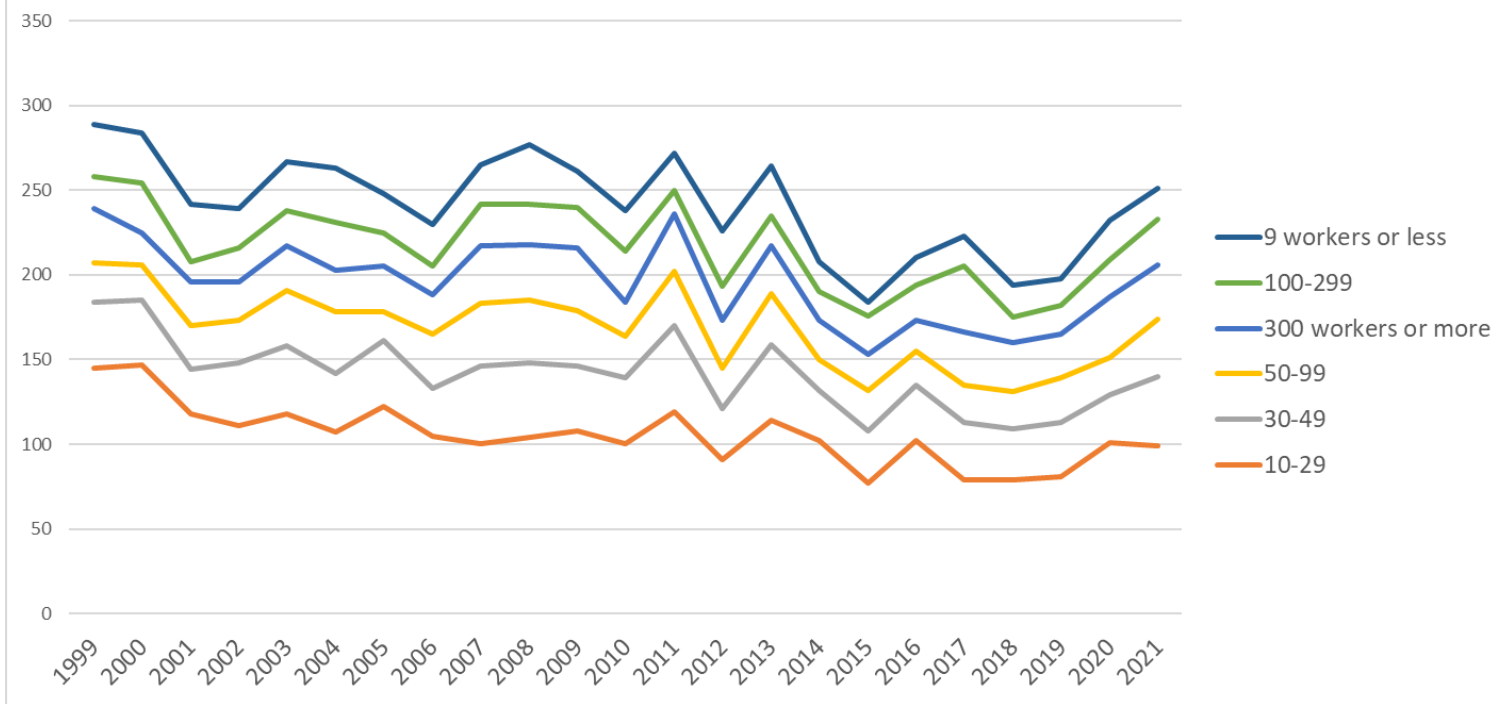
Transition of fatal and non-fatal accidents in type of accidents in code no. 090101 banking/trust business (1999-2021)

### Transition of fatal and non-fatal accidents in workers ages (1999-2021)



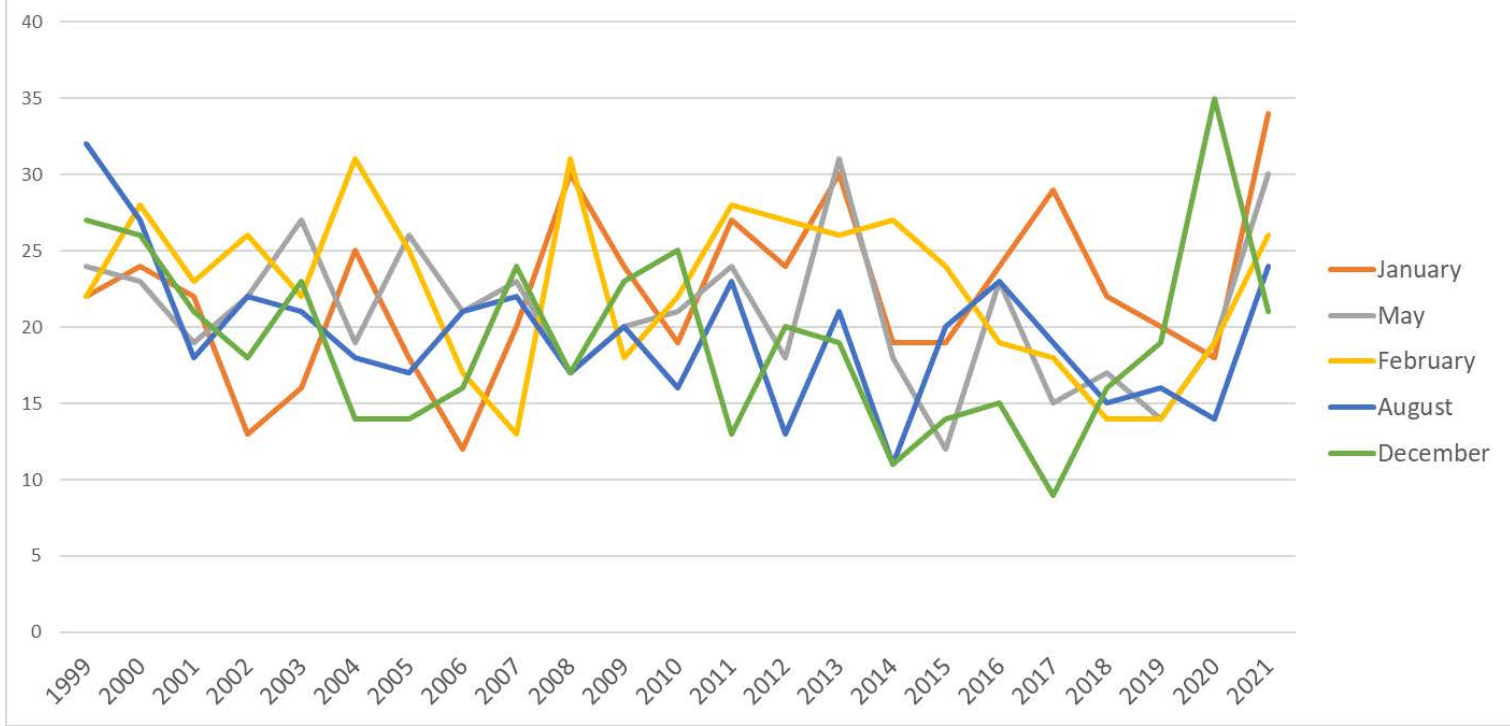
Transition of fatal and non-fatal accidents in workers ages in code no. 090101 banking/trust business (1999-2021)

Transition of fatal and non-fatal accidents in workers scales (1999-2021)



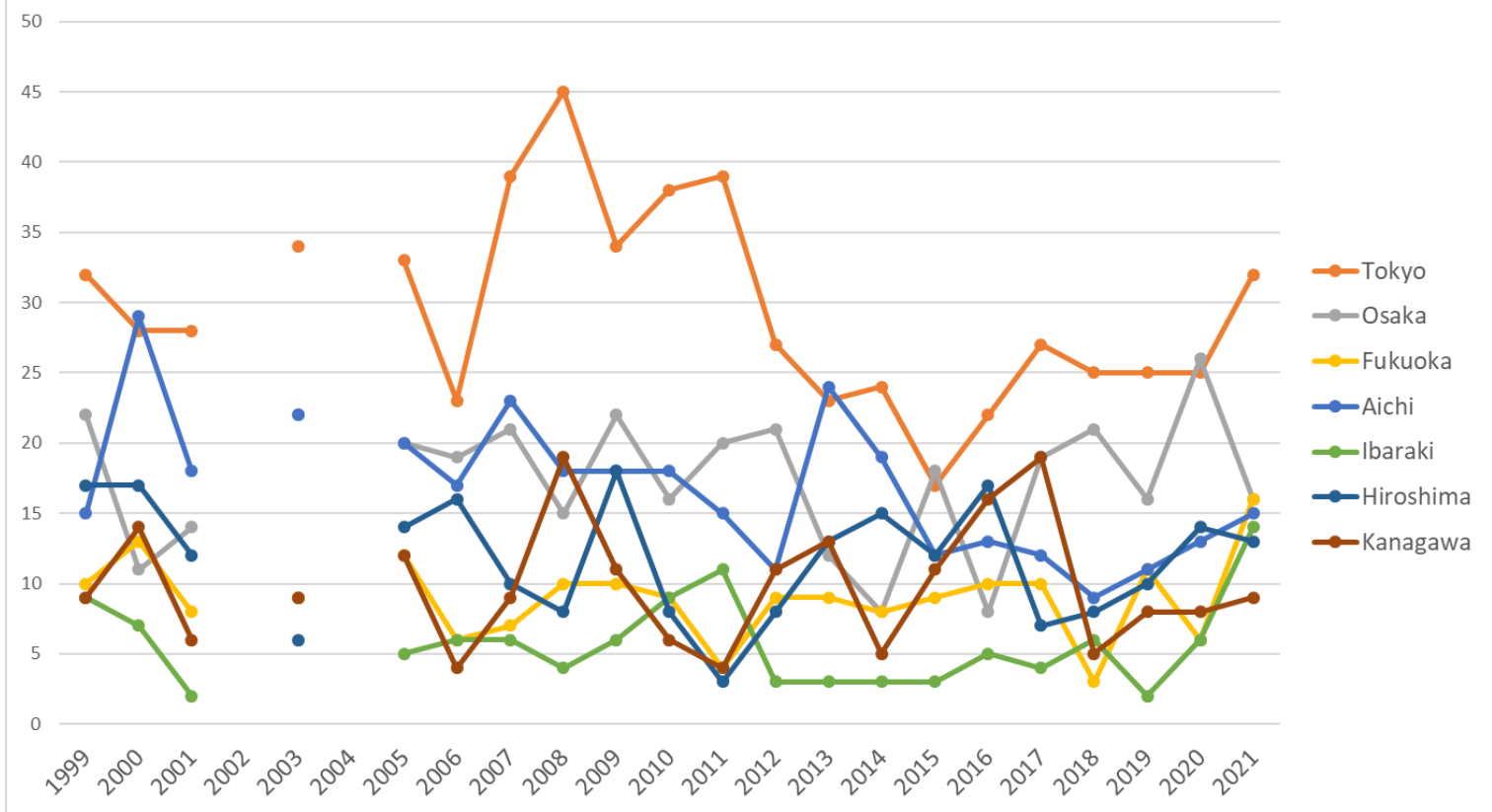
Transition of fatal and non-fatal accidents in workers scales in code no. 090101 banking/trust business (1999-2021)

Transition of fatal and non-fatal accidents in top 5 months (1999-2021)



Transition of fatal and non-fatal accidents in months in code no. 090101 banking/trust business (1999-2021)

Transition of fatal and non-fatal accidents in top 7 prefectures (1999-2021)



Transition of fatal and non-fatal accidents in prefectures in code no. 090101 banking/trust business (1999-2021)

Transition of fatal and non-fatal accidents in large causal agents in code no. 090101 banking/trust business (1999-2021)

code	Causal (L) agents	1999	2000	2001	2002	2003	2004	2005	2006	2007	2008	2009	2010	2011	2012	2013	2014	2015	2016	2017	2018	2019	2020	2021	total	Causal (L) agents
4	temporary buildings, establishments	63	76	56	65	80	83	70	73	101	116	98	78	95	99	85	71	82	86	98	86	94	90	96	1,941	temporary buildings, establishments
9	others	20	19	13	24	18	22	19	17	19	19	16	19	21	21	34	9	14	17	18	15	15	36	60	485	others
	crane, conveying																									crane,



2	machine	163	158	131	126	125	117	119	103	101	99	105	102	101	65	94	89	55	65	62	57	57	61	56	2,211	conveying machine
3	other equipment	30	18	26	16	38	27	28	26	30	30	23	26	33	24	30	22	19	30	28	22	22	27	25	600	other equipment
7	environment	3	7	4	2	3	5	6	5	7	2	3	6	19	7	8	11	4	3	8	10	3	5	8	139	environment
6	load	7	4	7	3	2	3	4	5	5	10	14	4	2	8	7	4	7	7	7	3	4	10	5	132	load
1	machine	1		2	1	1	4	2		1			2		1	1	2	1	1			1	1	1	23	machine
5	substance, material	2	2	3	2		2		1	1	1	2	1	1	1	5		2	1	2	1	2	2		34	substance, material
	total	289	284	242	239	267	263	248	230	265	277	261	238	272	226	264	208	184	210	223	194	198	232	251	5,565	total

Transition of fatal and non-fatal accidents in middle causal agents in code no. 090101 banking/trust business (1999-2021)

code	Causal (M) agents	1999	2000	2001	2002	2003	2004	2005	2006	2007	2008	2009	2010	2011	2012	2013	2014	2015	2016	2017	2018	2019	2020	2021	total	Causal (M) agents
41	temporary buildings, establishments	63	76	56	65	80	83	70	73	101	116	98	78	95	99	85	71	82	86	98	86	94	90	96	1,941	temporary buildings, establishments
23	vehicle	154	148	122	118	119	109	107	91	97	93	101	99	96	62	87	81	52	64	58	52	54	56	55	2,075	vehicle
91	other causal agent	7	8	6	11	6	6	3	6	4	6	5	5	6	3	22	1	2	5	5	7	6	24	39	193	other causal agent
92	no causal agent	10	11	6	11	11	12	15	10	14	10	11	12	14	15	12	8	12	12	13	8	8	12	21	268	no causal agent
37	tools	13	9	6	5	17	9	5	9	15	11	9	9	6	9	10	10	12	9	14	7	12	12	10	228	tools
71	natural environment	3	7	4	2	3	5	6	5	7	2	3	6	19	7	8	11	4	3	8	10	3	5	8	139	natural environment

36	human power machine, tools	8	6	11	5	14	14	16	9	10	8	9	13	18	10	8	8	5	13	7	9	4	9	7	221	human power machine, tools
39	other equipments, facilities	6	3	7	6	6	4	6	7	5	9	4	4	7	5	10	1	2	8	6	6	6	5	7	130	other equipments, facilities
61	load	7	4	7	3	2	3	4	5	5	10	14	4	2	8	7	4	7	7	7	3	4	10	5	132	load
22	conveying machine	9	10	9	7	6	8	12	12	2	6	3	1	4	2	6	8	3	1	4	4	3	4	1	125	conveying machine
16	general machine			2	1	1	4	2		1			2		1	1	2	1	1				1	1	21	general machine
35	electric equipment	3		2		1		1	1		2	1		2		2	2			1			1	1	20	electric equipment
52	materials	2	2	3	2		2			1	1	2		1	1	3		2	1	1	1	1			26	materials
99	unclassifiable	3		1	2	1	4	1	1	1	3		2	1	3							1			24	unclassifiable
21	crane				1					2		1	2	1	1	1					1		1		11	crane
51	hazards, harmful substances									1			1			2				1		1	2		8	hazards, harmful substances
13	woodworking machine	1																				1			2	woodworking machine
31	pressure vessel																1								1	pressure vessel
11	engine																									engine
12	power transmission mechanism																									power transmission mechanism



391	facilities			7		6		6	7	5	9	4	4	7	5	10	1	2	8	6	6	6	5	7	111	facilities
362	human power hauling equipment			9		13		15	8	10	7	8	12	18	9	6	7	5	13	7	9	4	9	6	175	human power hauling equipment
418	building, establishment			6		7		8	6	8	11	5	4	3	11	6	5	7	9	7	5	3	4	5	120	building, establishment
611	load			7		2		4	5	5	10	14	4	2	8	6	4	7	7	7	3	4	10	5	114	load
719	other environments			4		3		6	3	5	2	3	3	9	6	3	11	3	3	7	7	3	3	4	88	other environments
419	other temporary buildings, establishments			5		3		5	10	4	8	4	2	4	8	4	1	7	7	12	6	7	7	3	107	other temporary buildings, establishments
416	working platform, boot board			1		3		2	2	4	3	5	3	5	7	5	5	2	5	3	4	4	3	3	69	working platform, boot board
371	ladder			4		7		1	4	4	3	3	5	3	5	3	5	4		4	2	3	4	2	66	ladder
713	water								2	2			1	10		1		1						2	20	water
715	high/cold temperature environment												1		1	2					2		1	2	9	high/cold temperature environment
221	truck			7		6		11	8	1	4	3	1	4	2	6	6	3	1	3	2	3	4	1	76	truck
239	other vehicles			4		8		7	2	4	2	3	6	5	2	1	1	1		1	1			1	49	other vehicles
351	transmission			2				1	1		2			2		2	1			1			1	1	14	transmission
169	other general power machines			2		1		1					1		1		2						1	1	10	other general power machines
361	human power cranes																							1	1	human power cranes

999	unclassifiable			1		1		1	1	1	3		2	1	3							1			15	unclassifiable
364	hand tool			2		1		1	1		1	1	1			1	1								10	hand tool
529	other materials			1						1					1	1		2	1	1	1	1			10	other materials
222	forklift							3	1	2						1				1	1				9	forklift
214	elevator, lift								2		1	1	1	1							1		1		8	elevator, lift
521	metal material			2						1			1		1										5	metal material
229	other powered conveying machines			1				1	1							1									4	other powered conveying machines
414	opening			1		1							1												4	opening
519	other hazards, harmful substances								1				1							1					4	other hazards, harmful substances
711	natural ground, rock												1									1		1	4	natural ground, rock
165	food manufacturing machine							1		1						1									3	food manufacturing machine
359	other electrical equipment																								3	other electrical equipment
415	roof, beam, haze, crossbeam, principal rafter			1						1															3	roof, beam, haze, crossbeam, principal rafter
513	inflammable gas														1								2		3	inflammable gas
166	printing machine												1												2	printing machine
224	conveyor			1																			1		2	conveyor
232	railway vehicle															1									2	railway vehicle
	human power																									human power



	machine																								machine
133	wood planer machine																								wood planer machine
134	hollow chisel mortiser, wood borer																								hollow chisel mortiser, wood borer
135	chamfering machine, router, woodworking milling machine																								chamfering machine, router, woodworking milling machine
136	chain saw																								chain saw
141	leveling, transporting or loading machine																								leveling, transporting or loading machine
142	excavating machine																								excavating machine
143	foundation work machine																								foundation work machine
144	hardening machine																								hardening machine
145	demolition machine																								demolition machine
146	vehicle for high lift work																								vehicle for high lift work
149	other construction machines																								other construction machines
151	lathe																								lathe
152	drill press, milling																								drill press, milling

	machine																						machine
153	grinding machine, buffing machine																						grinding machine, buffing machine
154	power press																						power press
155	forging pressure hammer																						forging pressure hammer
156	shearing machine																						shearing machine
159	other metal manufacturing machines																						other metal manufacturing machines
161	centrifugal machine																						centrifugal machine
163	roll machine (except printingroll machine)																						roll machine (except printingroll machine)
164	injection molding machine																						injection molding machine
167	industrial robot																						industrial robot
171	felling machine																						felling machine
172	mobile logging machine																						mobile logging machine
173	skyline yarding machine																						skyline yarding machine
179	other mobile silviculture machine																						other mobile silviculture machine
211	crane																						crane







07	caught in/between	4	5	4	5	4	6	3	2	8	9	3	6	7	2	3	4	3	3	1	5	5	2	4	98	in/between	
06	crashed by	3	5	7	2	6	6	5	6	2	2	2	5	3	2	2	6	7	3	3	3	3	2	2	87	crashed by	
04	struck by flying or falling object	2	1	2	3	3	2	3	2	1	5	2	4	5	1	3	1		2	3	4	1		2	52	struck by flying or falling object	
08	cut	5	1	4	1	3	2	3	1	1	2	2	3			2	1			1		1		2	35	cut	
11	contact to high/low-temperature	3	1		4		4			1	1	1				2			2	1				1	1	26	contact to high/low-temperature
18	traffic accident (others)	4	1	1		1					1		2						2	1			2		1	16	traffic accident (others)
05	collapse		1	3	1	2	1		1	2		1	1		3	2			1	2		1			22	collapse	
99	unclassifiable	4	2	1	1	1	2	1		2			1								1	1			17	unclassifiable	
10	drown	1								1				9											11	drown	
12	contact to harmful substance	1															1							1		3	contact to harmful substance
09	injury to the sole of the foot								1										1						2	injury to the sole of the foot	
14	explosion																						2		2	explosion	
13	electric shock																										electric shock
15	burst																										burst
16	fire																										fire
	total	289	284	242	239	267	263	248	230	265	277	261	238	272	226	264	208	184	210	223	194	198	232	251	5,565	total	

Transition of fatal and non-fatal accidents in workers ages in code no. 090101 banking/trust business (1999-2021)

code	Age	1999	2000	2001	2002	2003	2004	2005	2006	2007	2008	2009	2010	2011	2012	2013	2014	2015	2016	2017	2018	2019	2020	2021	total	Age
5	50-59	61	47	40	54	44	55	61	50	78	70	65	70	75	82	69	72	75	80	93	71	81	84	92	1,569	50-59
2	20-29	85	96	78	58	65	53	48	50	49	49	55	57	56	40	63	45	35	47	39	41	36	50	52	1,247	20-29
4	40-49	58	65	61	55	68	75	51	67	78	87	76	54	70	64	70	42	43	42	41	37	37	39	44	1,324	40-49
6	60 years old or more	13	7	7	13	8	8	6	7	8	17	15	11	23	14	23	11	15	20	23	23	25	38	38	373	60 years old or more
3	30-39	72	68	56	59	81	72	80	54	52	54	47	45	47	25	38	38	16	21	26	21	18	21	21	1,032	30-39
1	19 years old or less		1			1		2	2			3	1	1	1	1				1	1	1		4	20	19 years old or less
	total	289	284	242	239	267	263	248	230	265	277	261	238	272	226	264	208	184	210	223	194	198	232	251	5,565	total

Transition of fatal and non-fatal accidents in workers scales in code no. 090101 banking/trust business (1999-2021)

code	Workers scale	1999	2000	2001	2002	2003	2004	2005	2006	2007	2008	2009	2010	2011	2012	2013	2014	2015	2016	2017	2018	2019	2020	2021	total	Workers scale
2	10-29	145	147	118	111	118	107	122	105	100	104	108	100	119	91	114	102	77	102	79	79	81	101	99	2,429	10-29
3	30-49	39	38	26	37	40	35	39	28	46	44	38	39	51	30	45	30	31	33	34	30	32	28	41	834	30-49
4	50-99	23	21	26	25	33	36	17	32	37	37	33	25	32	24	30	18	24	20	22	22	26	22	34	619	50-99
6	300 workers or more	32	19	26	23	26	25	27	23	34	33	37	20	34	28	28	23	21	18	31	29	26	36	32	631	300 workers or more
5	100-299	19	29	12	20	21	28	20	17	25	24	24	30	14	20	18	17	23	21	39	15	17	22	27	502	100-299
1	9 workers or less	31	30	34	23	29	32	23	25	23	35	21	24	22	33	29	18	8	16	18	19	16	23	18	550	9 workers or less
	total	289	284	242	239	267	263	248	230	265	277	261	238	272	226	264	208	184	210	223	194	198	232	251	5,565	total

Transition of fatal and non-fatal accidents in months in code no. 090101 banking/trust business (1999-2021)

code	Month	1999	2000	2001	2002	2003	2004	2005	2006	2007	2008	2009	2010	2011	2012	2013	2014	2015	2016	2017	2018	2019	2020	2021	total	Month

1	January	22	24	22	13	16	25	18	12	20	30	24	19	27	24	30	19	19	24	29	22	20	18	34	511	January
5	May	24	23	19	22	27	19	26	21	23	17	20	21	24	18	31	18	12	23	15	17	14	19	30	483	May
2	February	22	28	23	26	22	31	25	17	13	31	18	22	28	27	26	27	24	19	18	14	14	19	26	520	February
8	August	32	27	18	22	21	18	17	21	22	17	20	16	23	13	21	11	20	23	19	15	16	14	24	450	August
12	December	27	26	21	18	23	14	14	16	24	17	23	25	13	20	19	11	14	15	9	16	19	35	21	440	December
7	July	24	23	22	25	20	25	15	25	28	38	20	18	26	15	19	14	13	17	16	17	27	27	20	494	July
10	October	19	24	16	21	31	21	14	20	20	22	26	24	24	19	24	15	8	20	24	17	14	18	20	461	October
9	September	21	14	18	15	17	21	31	21	14	18	21	15	18	15	16	18	10	14	19	19	21	21	18	415	September
6	June	29	25	38	19	26	21	22	24	24	19	29	21	15	17	28	13	15	15	26	18	12	20	17	493	June
3	March	27	29	18	19	17	22	26	15	16	29	16	19	28	19	16	19	21	9	17	11	13	17	14	437	March
11	November	24	21	13	14	23	18	21	16	32	16	17	19	22	22	18	23	15	16	17	14	19	11	14	425	November
4	April	18	20	14	25	24	28	19	22	29	23	27	19	24	17	16	20	13	15	14	14	9	13	13	436	April
	total	289	284	242	239	267	263	248	230	265	277	261	238	272	226	264	208	184	210	223	194	198	232	251	5,565	total

Transition of fatal and non-fatal accidents in prefectures in code no. 090101 banking/trust business (1999-2021)

code	Prefecture	1999	2000	2001	2002	2003	2004	2005	2006	2007	2008	2009	2010	2011	2012	2013	2014	2015	2016	2017	2018	2019	2020	2021	total	Prefecture
13	Tokyo	32	28	28		34		33	23	39	45	34	38	39	27	23	24	17	22	27	25	25	25	32	620	Tokyo
27	Osaka	22	11	14		22		20	19	21	15	22	16	20	21	12	8	18	8	19	21	16	26	16	367	Osaka
40	Fukuoka	10	13	8		9		12	6	7	10	10	9	4	9	9	8	9	10	10	3	11	6	16	189	Fukuoka
23	Aichi	15	29	18		22		20	17	23	18	18	18	15	11	24	19	12	13	12	9	11	13	15	352	Aichi
8	Ibaraki	9	7	2		9		5	6	6	4	6	9	11	3	3	3	3	5	4	6	2	6	14	123	Ibaraki
34	Hiroshima	17	17	12		6		14	16	10	8	18	8	3	8	13	15	12	17	7	8	10	14	13	246	Hiroshima
14	Kanagawa	9	14	6		9		12	4	9	19	11	6	4	11	13	5	11	16	19	5	8	8	9	208	Kanagawa
28	Hyogo	12	12	17		9		9	5	9	8	10	15	11	6	4	15	8	13	9	8	10	3	9	202	Hyogo

11	Saitama	6	2	8		7		9	17	15	13	12	8	6	7	13	8	5	5	9	7	8	10	9	184	Saitama
12	Chiba	10	10	7		7		9	8	14	12	13	9	8	6	14	8	4	7	6	7	9	9	8	185	Chiba
26	Kyoto	16	12	8		10		7	10	11	7	4	6	7	4	3	5	1	2	6	4	6	4	8	141	Kyoto
32	Shimane	4	3	2		4		1	1		1	1	1	1	2	1	1	1	4	1	2	1	1	8	41	Shimane
24	Mie	9	5	5		6		5	6	5	4	7	3	6	3	10	4	5	3	10	4	3	4	7	114	Mie
33	Okayama	6	4	8		6		7	4	4	6	3	1	5	3	5	7	3	5	1	4	1		7	90	Okayama
4	Miyagi	3	3	1		6		4	2	4	5	3	8	7	3	7	5	6	5	3	3	3	3	6	90	Miyagi
38	Ehime	3	7	2				4	7	5	3	11	9	10	8	6	6	7	6	6	11	3	3	5	122	Ehime
10	Gunma	5	5	7		7		1	4	7	5	3	2	4	5	3	8	1	6	6	1	3	2	5	90	Gunma
29	Nara	4	3	3		4		6	3	7	5	4	2	10	3	3	2	3	3	5	3	2	1	5	81	Nara
20	Nagano	3	2	5		1		5	7	11	2	4		4	1	6	2	5	2	4	4	2	5	5	80	Nagano
25	Shiga	4	3	1		5		5	4	1		1	2		1	4	3	4	2		1	3	3	5	52	Shiga
45	Miyazaki	1	2	1		1		1	1	1	1	1	1		1	2	1	1	1		2	2	6	5	32	Miyazaki
1	Hokkaido	5	4	4		5		4	3	4	4	5	5	10	10	10	5	6	6	6	1	4	7	4	112	Hokkaido
21	Gifu	7	5	6		7		9	6	4	9	2	2	6	5	6	1	2	3	6	5	4	8	4	107	Gifu
2	Aomori	7	5	2		7		6	5	7	4	2	3	5	4	2	5	1	1	4	3	2		4	79	Aomori
43	Kumamoto	9	5	4		5		1	1		6	1	2	4	5	1		1	3	4	4	6	3	4	69	Kumamoto
19	Yamanashi	4	1	3		1		5	2	7	8	1	1	5	4	3	1	2	2	3	1	1	4	4	63	Yamanashi
37	Kagawa	7	4	3		5		2	2	1	2	2	3	1	3	3		2	1	3	3	4	2	3	56	Kagawa
46	Kagoshima	3	4	5		4		4	3		1		2	1	2	4	3	2	1	2	1	2	2	3	49	Kagoshima
3	Iwate	1	6	4		2		1	3	1	1	1		2	1	1	2	1		1	1	1	1	3	34	Iwate
15	Niigata	7	9	5		3		7	6	3	5	4	11	8	5	21	3	5	9	4	4	5	9	2	135	Niigata
22	Shizuoka	3	5	4		3		4	2	2	9	5	4	13	6	4	2	8	4	7	5	8		2	100	Shizuoka

17	Ishikawa		3	2		5			5	4	5	2	4	6	5	2	1	3	4	1		4	6	2	64	Ishikawa
41	Saga	3	1	2		9		1		1	2	1	1	1	1	2	2	1			3	1	2	2	36	Saga
9	Tochigi	6	3	3		1			4	4	5	3	8	2	6	2	2	1			3		7	1	61	Tochigi
7	Fukushima	1	3			1		5	2	5	3	4	1	5	2	1	3		4	4	5		4	1	54	Fukushima
18	Fukui	3	5	4		2			2	1	2	4	1	2	3	2	2	3	1	1	2	3	2	1	46	Fukui
30	Wakayama	1	3	2		3		1	2	1		2	3	1	1	1	1		1			2	3	1	29	Wakayama
5	Akita		3	2		1		2		1	1			1	1		1	1	1	1	2	2	2	1	23	Akita
42	Nagasaki	1	1					1		1	1	4	1	2	2	2	1	1				2	1	1	22	Nagasaki
31	Tottori	1	2					1	1	2	2		2		1	3			1	1			1	1	19	Tottori
35	Yamaguchi	6	9	10		7		2	2	2	4	7	2	5	3	4	8	2	4	2	2	1	5		87	Yamaguchi
16	Toyama	1		1		4		1	2		4	5	3	4	6	5		1	3	1	5	4	4		54	Toyama
6	Yamagata		3	2		4			4	2	5	4	2	4		2	2	3	3	2	4	2	3		51	Yamagata
36	Tokushima	9	3	6		1		1		3			2	2		3	2			1	1		1		35	Tokushima
44	Oita	1	2	4		1		1	2		2	4	2	3	2	1		1	2	2	1	1			32	Oita
39	Kochi	2	3	1					1			1	1	4	4	1	2			1			3		24	Kochi
47	Okinawa	1				2					1	1	1		1		2	1	1	2					13	Okinawa
	total	289	284	242		267		248	230	265	277	261	238	272	226	264	208	184	210	223	194	198	232	251	5,063	total

Data source : <https://anzeninfo.mhlw.go.jp/user/anzen/tok/anst00.htm>

Return to [https://www.jisha.or.jp/english/statistics/202211\\_23.html](https://www.jisha.or.jp/english/statistics/202211_23.html)