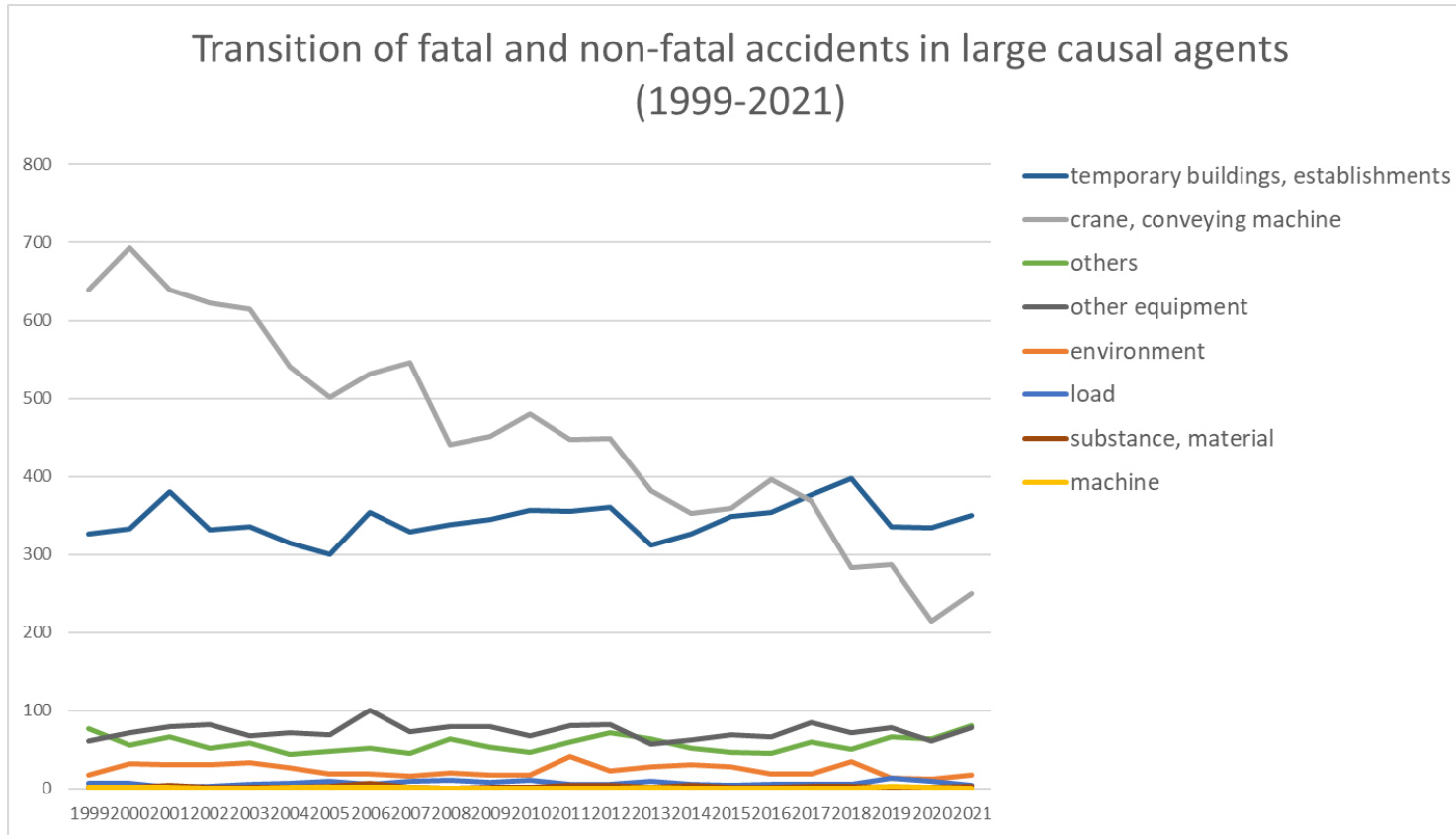
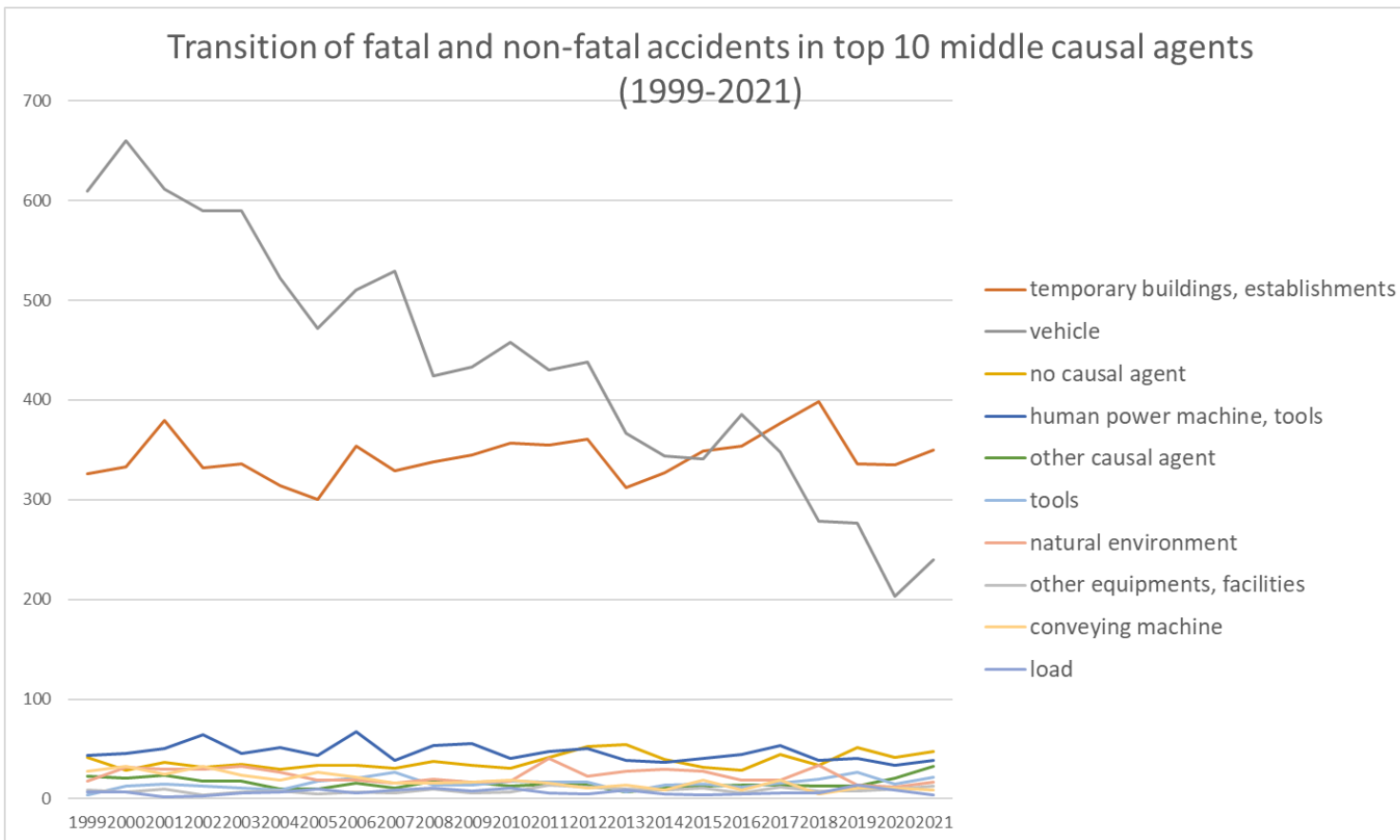


Transition of fatal and non-fatal accidents in each element like as causal agents, type of accidents, etc. in code no. 090103 insurance business (1999-2021)

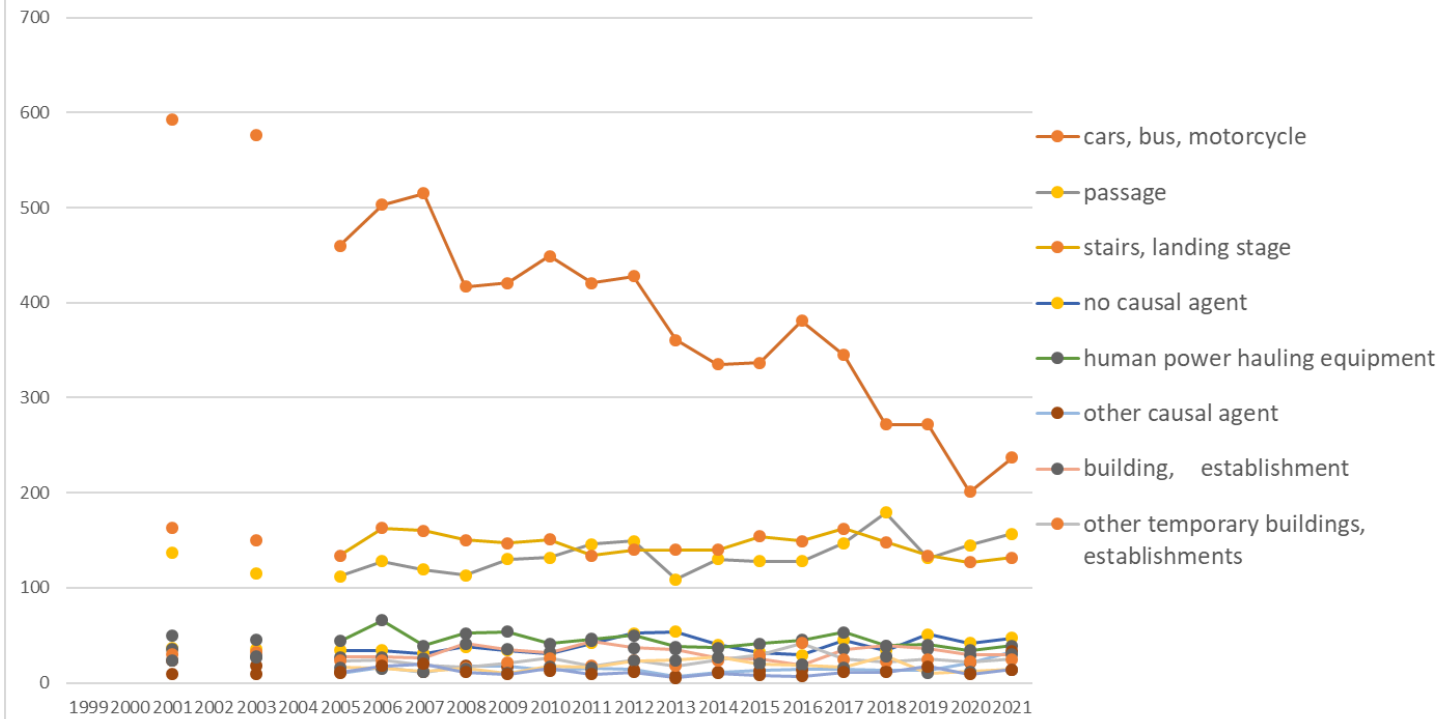


Transition of fatal and non-fatal accidents in large causal agents in code no. 090103 insurance business (1999-2021)



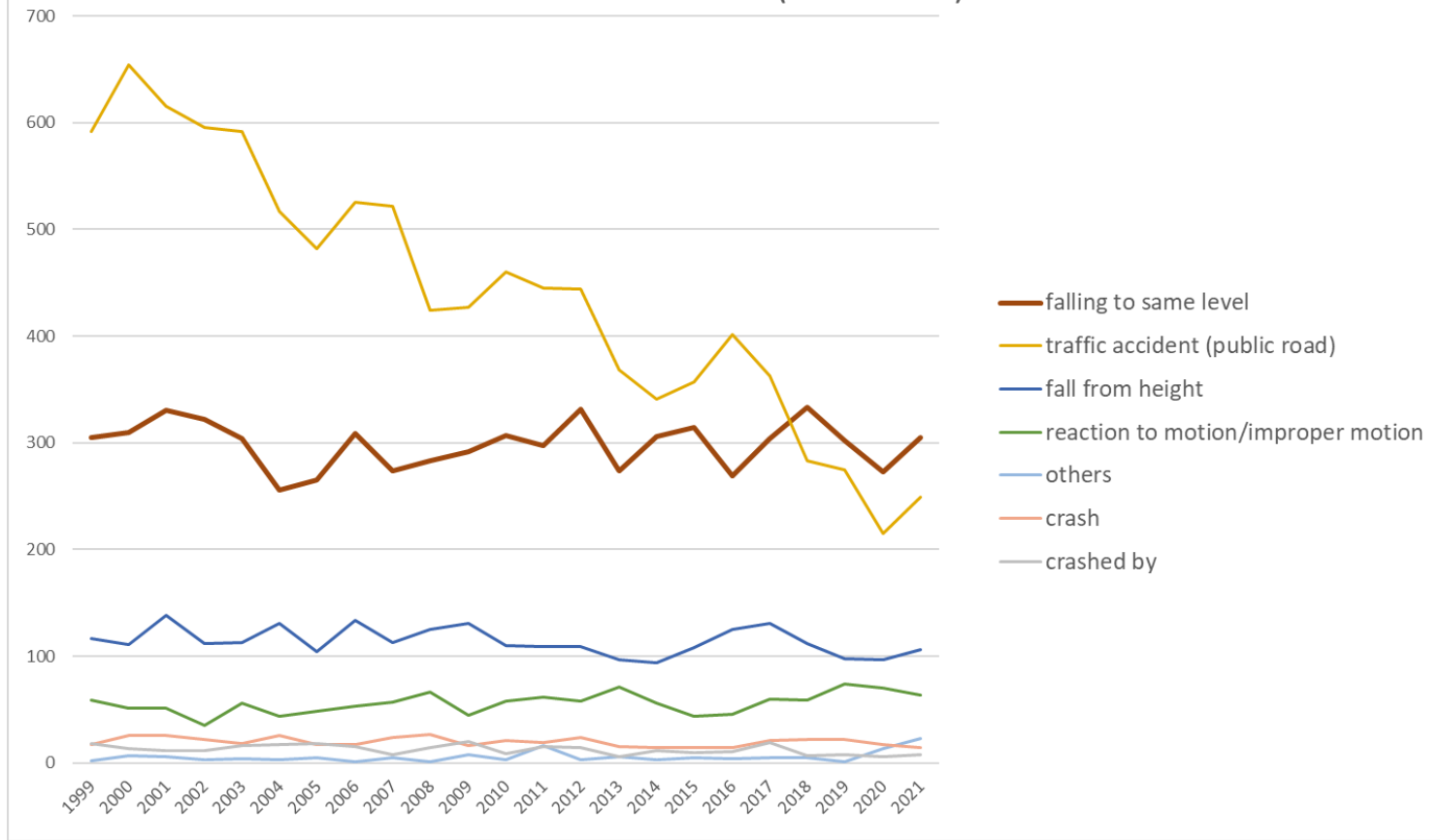
Transition of fatal and non-fatal accidents in middle causal agents in code no. 090103 insurance business (1999-2021)

Transition of fatal and non-fatal accidents in top 10 small causal agents (1999-2021)



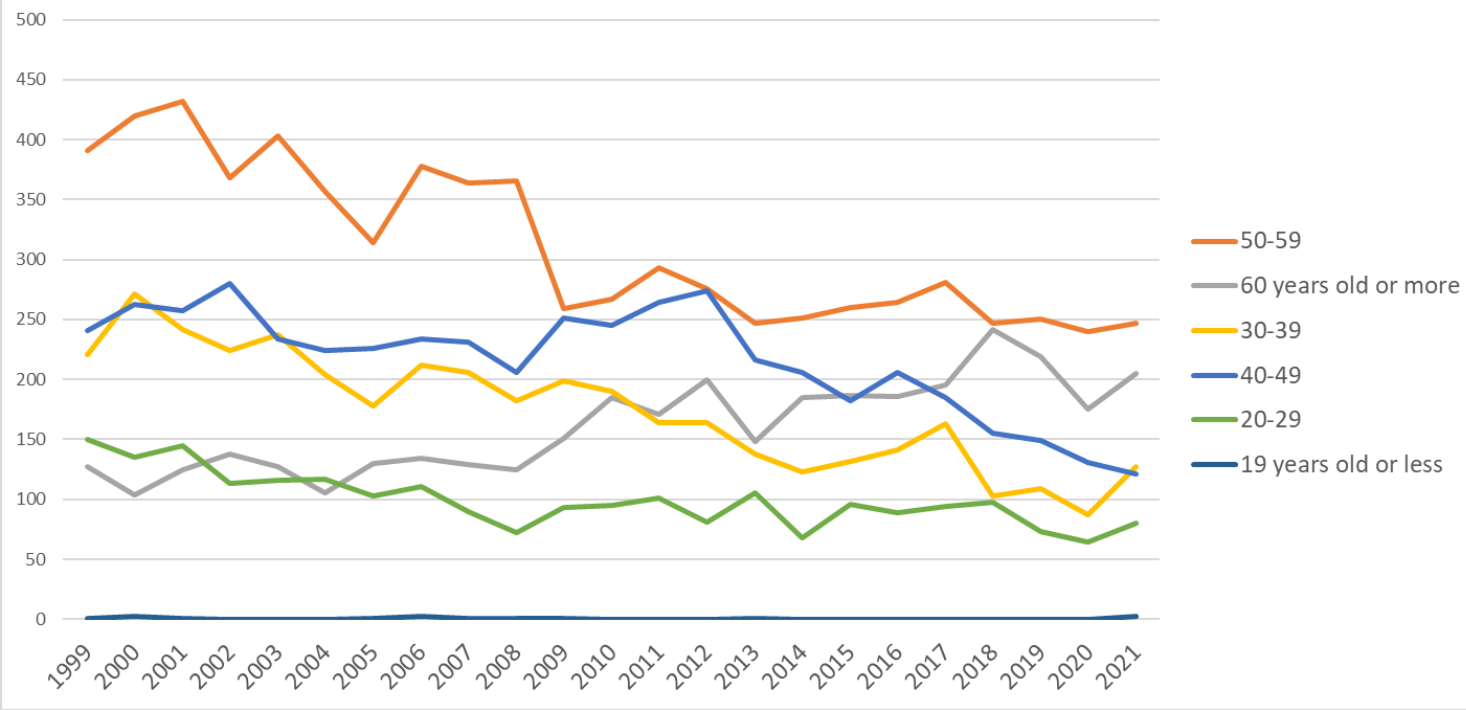
Transition of fatal and non-fatal accidents in small causal agents in code no. 090103 insurance business (1999-2021)

Transition of fatal and non-fatal accidents in top 7 type of accidents
(1999-2021)



Transition of fatal and non-fatal accidents in type of accidents in code no. 090103 insurance business (1999-2021)

Transition of fatal and non-fatal accidents in workers ages (1999-2021)



Transition of fatal and non-fatal accidents in workers ages in code no. 090103 insurance business (1999-2021)

7	July	93	106	84	113	93	85	77	100	82	90	83	101	102	95	72	58	67	82	56	59	82	67	63	1,910	July
10	October	91	92	114	97	91	81	78	96	84	93	100	84	67	77	81	72	79	74	87	74	76	60	59	1,907	October
5	May	77	107	111	98	110	77	72	69	82	72	71	74	56	86	83	68	56	68	63	72	62	19	56	1,709	May
2	February	94	100	89	89	82	92	91	96	89	97	71	77	93	87	66	91	82	63	81	88	67	51	54	1,890	February
9	September	106	97	103	90	89	97	64	80	86	62	74	69	84	62	81	64	76	65	83	62	65	66	53	1,778	September
8	August	103	86	85	89	66	82	68	76	73	55	69	58	81	61	59	59	66	72	72	64	62	37	52	1,595	August
	total	1,131	1,195	1,202	1,123	1,117	1,007	952	1,071	1,021	952	954	982	993	995	855	833	857	886	918	845	800	697	782	22,168	total

Transition of fatal and non-fatal accidents in prefectures in code no. 090103 insurance business (1999-2021)

code	Prefecture	1999	2000	2001	2002	2003	2004	2005	2006	2007	2008	2009	2010	2011	2012	2013	2014	2015	2016	2017	2018	2019	2020	2021	total	Prefecture
27	Osaka	116	153	144		132		106	130	102	96	114	87	95	92	83	91	90	81	93	88	88	48	83	2,112	Osaka
13	Tokyo	107	111	112		106		93	97	85	91	87	105	104	94	92	84	92	91	104	94	66	67	78	1,960	Tokyo
11	Saitama	46	34	63		58		42	54	46	32	37	42	47	53	37	29	49	43	40	36	34	32	43	897	Saitama
23	Aichi	59	54	65		52		47	39	37	48	41	43	47	52	42	25	43	46	39	46	48	45	40	958	Aichi
40	Fukuoka	58	46	62		72		45	84	67	54	59	63	57	53	54	53	46	32	51	52	41	45	34	1,128	Fukuoka
14	Kanagawa	61	68	58		45		42	37	34	30	48	31	52	53	36	45	35	50	36	31	37	26	34	889	Kanagawa
12	Chiba	45	41	48		36		20	34	30	26	26	40	33	38	44	36	38	45	29	18	35	22	34	718	Chiba
1	Hokkaido	84	70	69		58		54	53	46	60	45	44	55	62	41	37	48	47	43	44	38	30	32	1,060	Hokkaido
22	Shizuoka	41	30	26		33		16	25	30	25	26	32	39	36	27	25	22	20	27	27	30	15	31	583	Shizuoka
28	Hyogo	38	58	43		48		50	46	50	36	48	36	38	27	29	37	38	28	48	44	25	32	24	823	Hyogo
34	Hiroshima	24	21	28		29		16	34	18	24	20	13	21	12	16	17	17	30	24	19	15	18	21	437	Hiroshima
4	Miyagi	25	27	27		27		28	35	44	26	27	23	32	29	29	26	26	20	22	21	20	17	18	549	Miyagi
46	Kagoshima	15	9	7		19		16	21	16	14	8	22	13	20	16	7	13	20	18	16	13	14	18	315	Kagoshima
43	Kumamoto	22	20	16		19		22	15	15	15	20	20	13	18	14	11	16	24	14	16	22	11	17	360	Kumamoto

10	Gunma	14	20	18		21		16	15	18	16	15	17	13	13	12	15	20	10	10	12	9	17	16	317	Gunma
15	Niigata	18	23	10		19		13	19	15	21	24	25	15	14	14	10	15	13	18	19	17	13	15	350	Niigata
8	Ibaraki	19	19	20		18		16	17	9	16	11	17	13	14	18	10	16	16	10	17	16	13	14	319	Ibaraki
35	Yamaguchi	14	15	20		11		13	14	13	13	9	17	16	8	5	6	10	11	4	11	8	8	14	240	Yamaguchi
21	Gifu	6	6	15		5		5	8	9	14	14	11	14	14	9	8	4	2	12	6	8	3	14	187	Gifu
26	Kyoto	35	47	42		27		31	26	42	26	21	16	34	27	20	12	19	15	12	13	20	20	13	518	Kyoto
24	Mie	14	8	15		13		6	15	12	8	10	11	13	17	15	16	11	11	10	4	13	13	13	248	Mie
38	Ehime	19	16	7		9		8	7	10	12	14	17	5	12	7	13	6	12	17	12	8	9	13	233	Ehime
45	Miyazaki	14	28	21		23		14	28	19	22	12	11	20	15	11	12	4	4	13	14	4	11	12	312	Miyazaki
9	Tochigi	12	18	11		13		15	14	16	16	12	14	16	9	11	8	5	16	10	14	7	8	12	257	Tochigi
36	Tokushima	7	5	12		3		5	6	8	5	6	8	9	9	3	2	5	4	4	5	3	3	12	124	Tokushima
42	Nagasaki	14	10	23		15		15	15	20	22	12	13	14	15	12	13	18	14	12	10	24	14	11	316	Nagasaki
7	Fukushima	12	4	11		21		20	12	18	11	20	17	14	12	12	12	11	14	11	12	7	14	11	276	Fukushima
17	Ishikawa	10	9	11		8		10	7	7	9	5	7	9	15	3	2	10	8	13	7	8	10	9	177	Ishikawa
47	Okinawa	2	2			5		3	7	4	6	5	3	5	12	7	9	4	1	9	8	1	3	9	105	Okinawa
33	Okayama	18	16	23		15		14	14	20	25	17	17	9	13	10	21	9	14	18	12	13	16	8	322	Okayama
20	Nagano	18	15	12		10		15	9	8	11	15	12	13	8	13	6	17	19	17	8	9	6	8	249	Nagano
5	Akita	8	11	7		15		6	10	7	7	10	11	8	4	6	4	7	8	7	4	2	4	7	153	Akita
2	Aomori	12	18	17		9		14	10	9	14	7	11	11	10	13	18	4	7	12	10	8	17	6	237	Aomori
41	Saga	8	19	13		15		8	10	12	12	11	11	4	14	11	11	10	11	13	9	11	9	6	228	Saga
39	Kochi	10	16	16		4		10	8	13	4	6	9	5	5	5	14	6	4	7	7	5	4	6	164	Kochi
19	Yamanashi	5	10	8		6		7	7	6	5	4	3	8	3	9	3	8	5	5	4	9	2	6	123	Yamanashi
25	Shiga	6	6	8		8		9	5	4	2	3	7	3	6	11	3	2	8	3	6	4	2	6	112	Shiga
3	Iwate	10	7	8		9		13	7	11	9	11	12	18	7	6	11	6	6	12	4	9	11	5	192	Iwate

31	Tottori	8	7	5		7		5	1	8	4	5	8	10	5	2	4		7	4	2	3	2	5	102	Tottori
30	Wakayama	15	20	15		10		14	18	16	13	13	12	9	12	9	8	10	14	13	11	7	6	4	249	Wakayama
37	Kagawa	9	15	11		9		14	11	19	7	6	10	8	7	11	13	12	5	5	4	6	3	4	189	Kagawa
44	Oita	17	13	22		11		10	7	9	7	11	7		4	3	7	5	7	12	16	11	4	4	187	Oita
6	Yamagata	8	9	8		15		8	9	7	11	8	11	6	13	6	7	11	11	9	6	8	8	4	183	Yamagata
29	Nara	7	9	9		8		7	12	10	13	8	10	9	13	5	9	8	8	7	5	12	8	3	180	Nara
16	Toyama	8	15	5		7		4	6	5	5	11	5	7	12	6	6	6	9	8	9	7	5	2	148	Toyama
32	Shimane	2	4	5		4		5	5	9	3	5	7	6	3	6	10	2	6	6	7	8	2	2	107	Shimane
18	Fukui	11	13	6		10		2	8	8	6	7	14	3	11	4	7	3	9	7	5	3	7	1	145	Fukui
	total	1,131	1,195	1,202		1,117		952	1,071	1,021	952	954	982	993	995	855	833	857	886	918	845	800	697	782	20,038	total

Data source : <https://anzeninfo.mhlw.go.jp/user/anzen/tok/anst00.htm>

Return to https://www.jisha.or.jp/english/statistics/202211_23.html