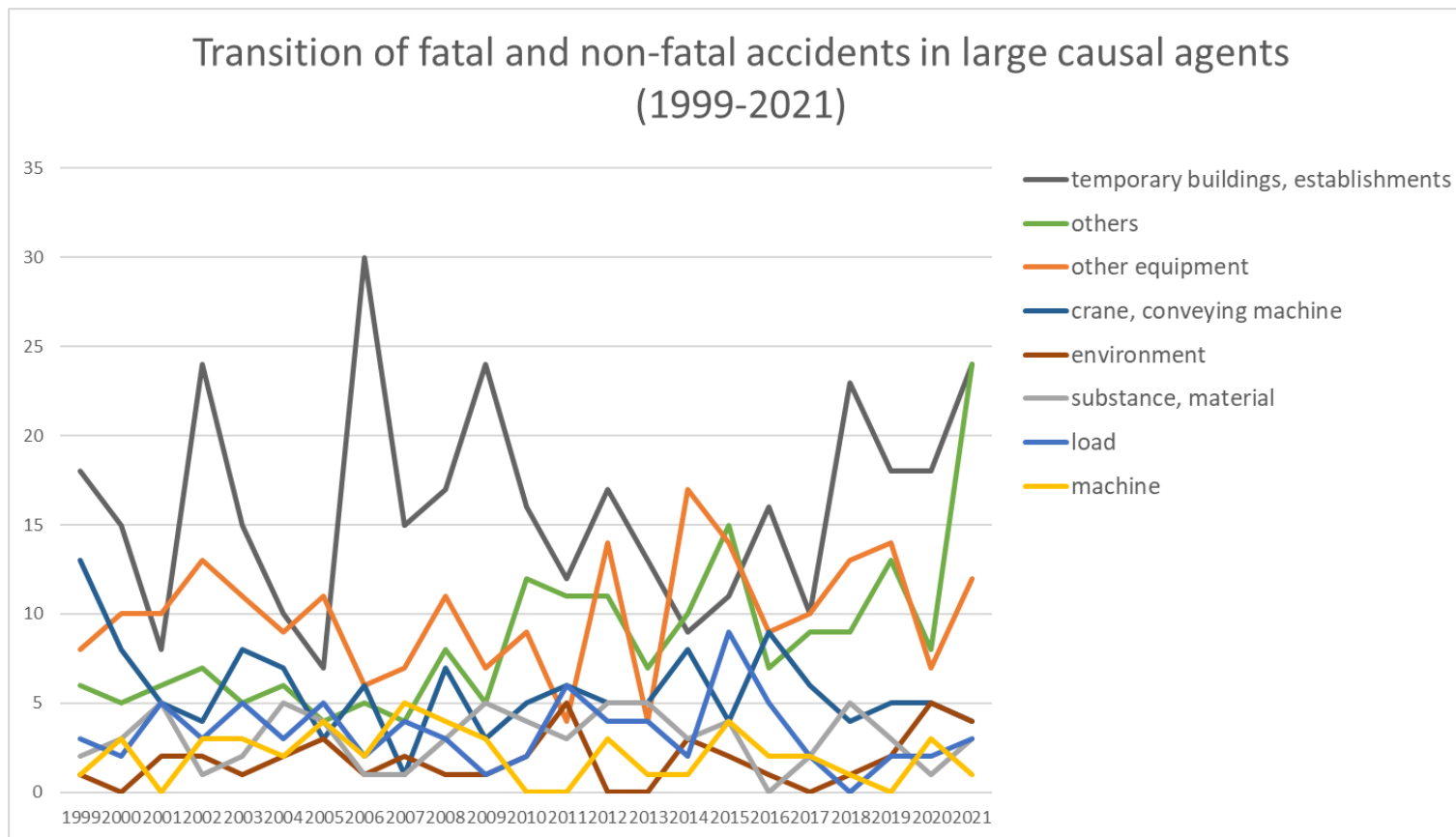
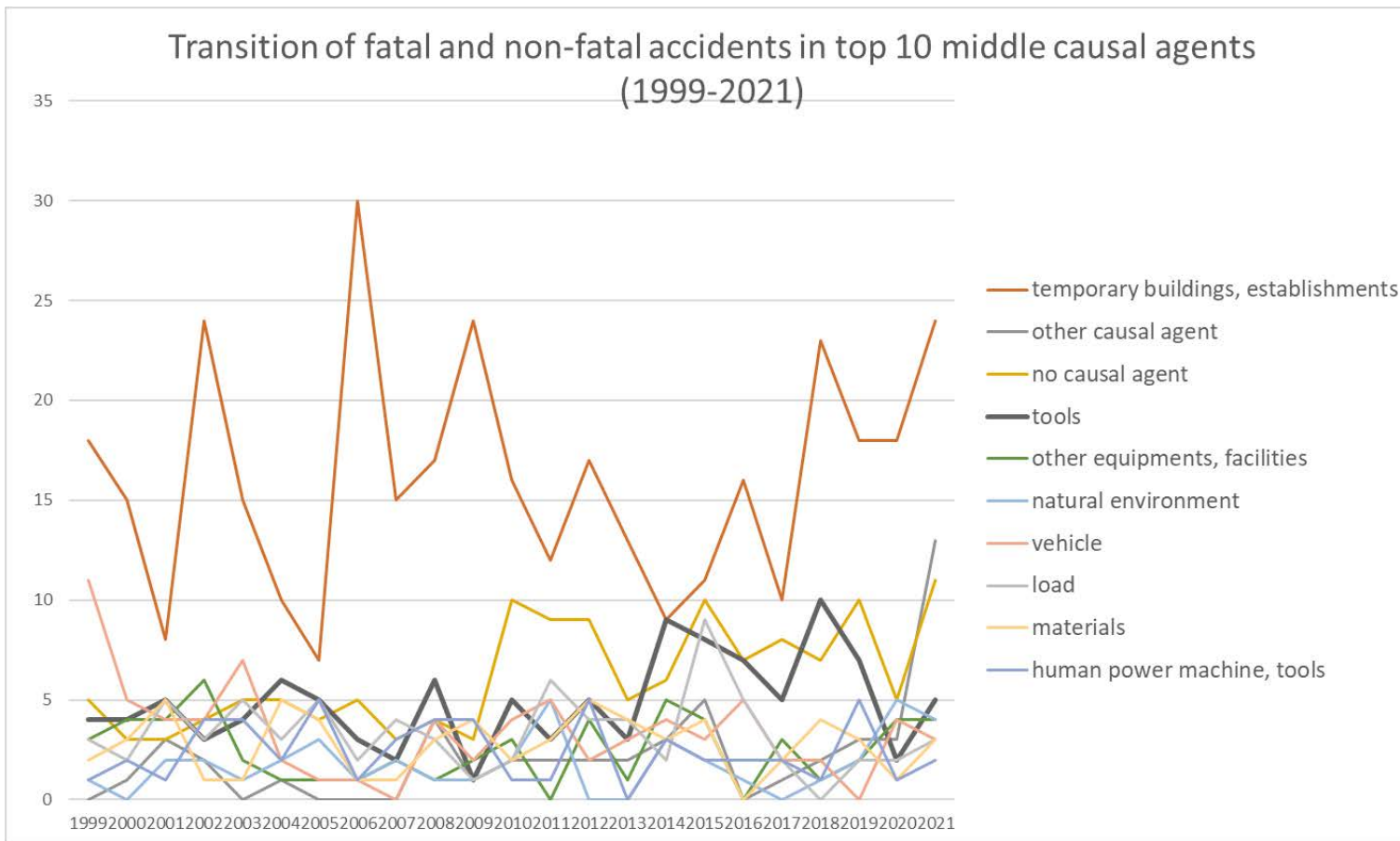


Transition of fatal and non-fatal accidents in each element like as causal agents, type of accidents, etc. in code no. 100109 other movie/play service (1999-2021)



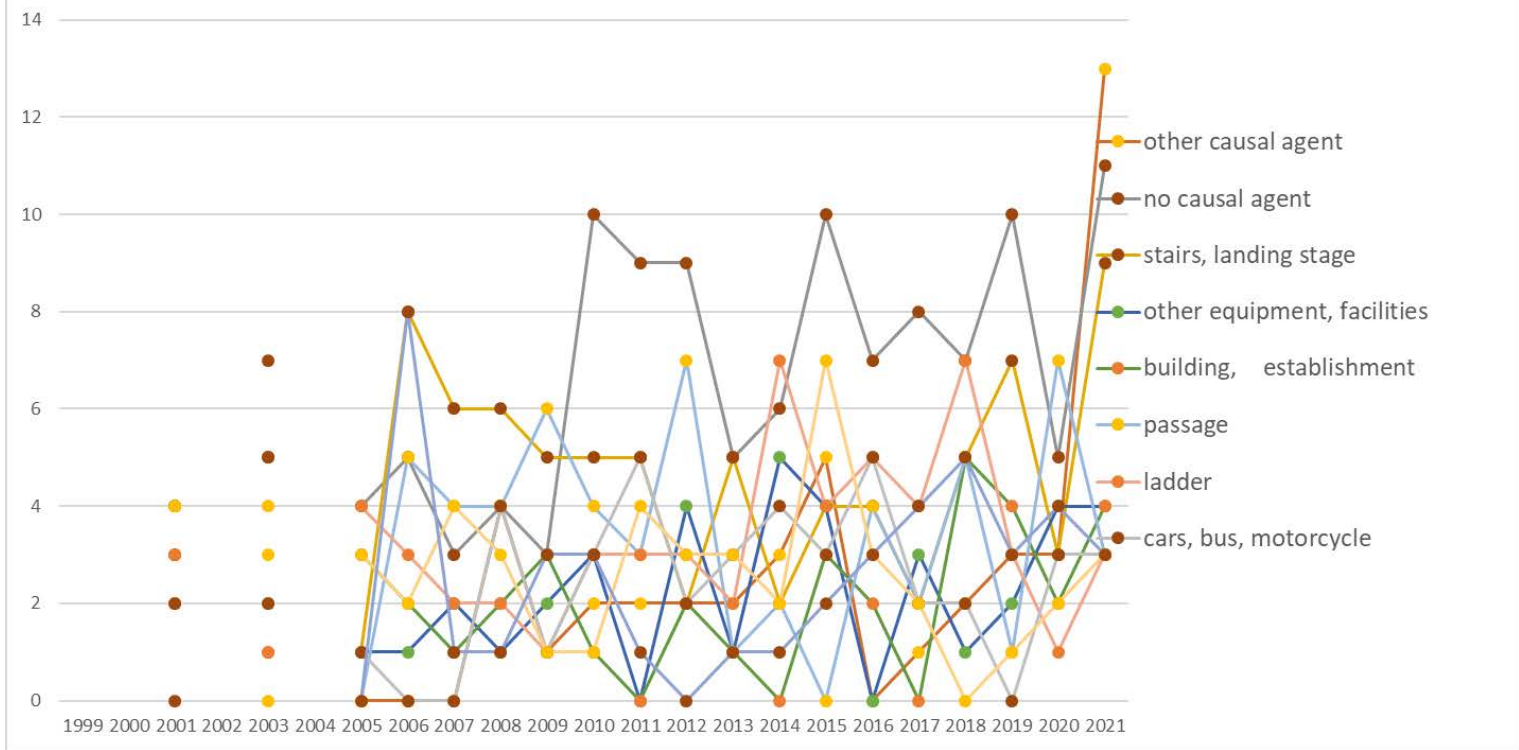
Transition of fatal and non-fatal accidents in large causal agents in code no. 100109 other movie/play service (1999-2021)

Transition of fatal and non-fatal accidents in top 10 middle causal agents (1999-2021)



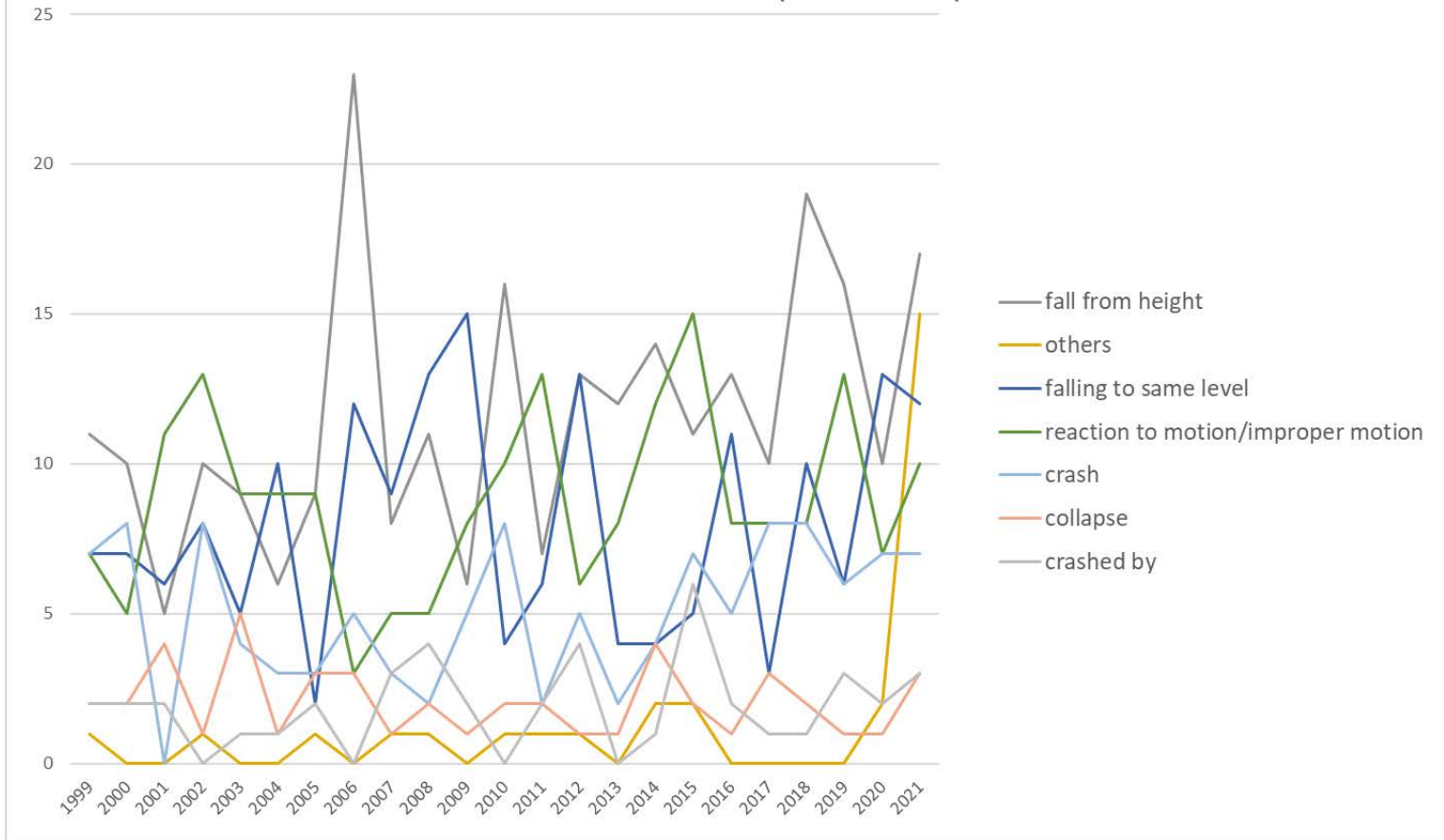
Transition of fatal and non-fatal accidents in middle causal agents in code no. 100109 other movie/play service (1999-2021)

Transition of fatal and non-fatal accidents in top 10 small causal agents (1999-2021)



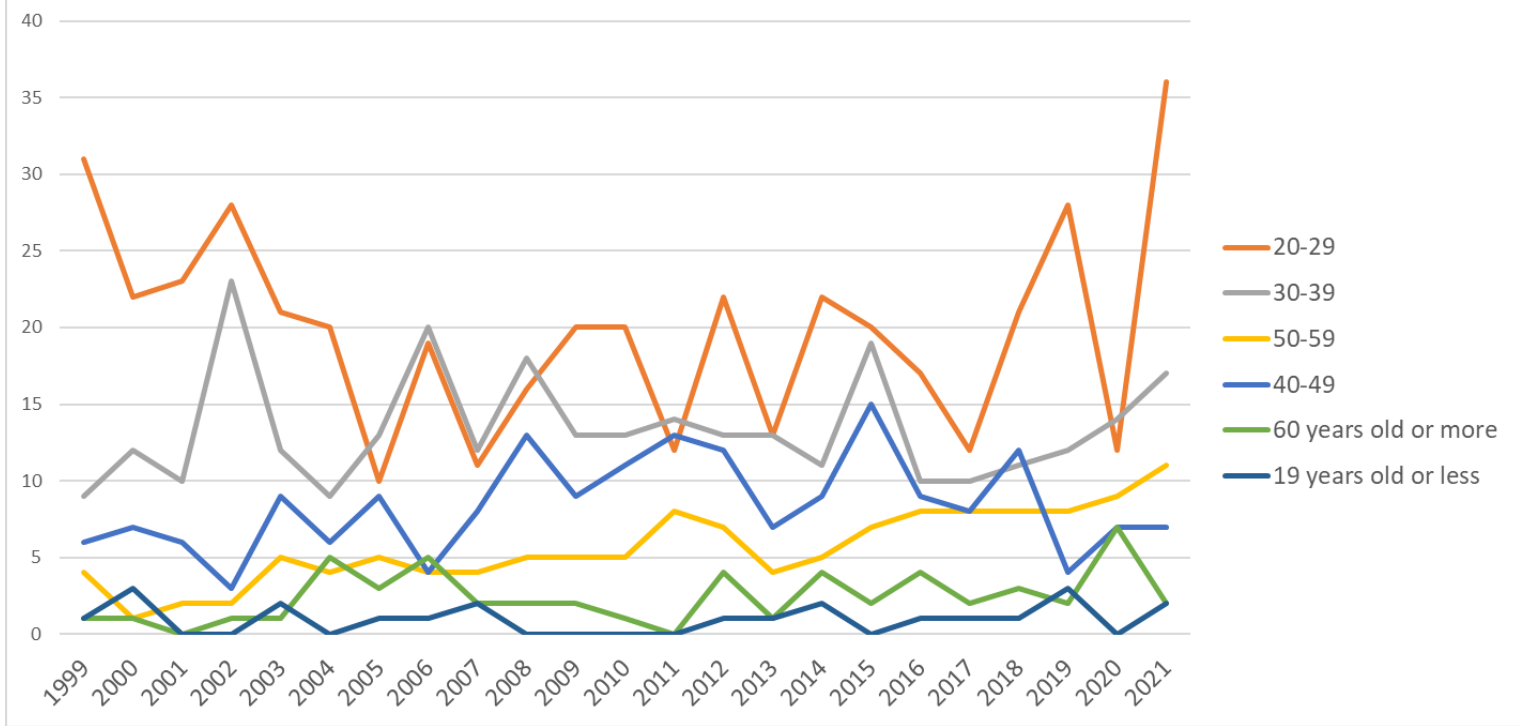
Transition of fatal and non-fatal accidents in small causal agents in code no. 100109 other movie/play service (1999-2021)

Transition of fatal and non-fatal accidents in top 7 type of accidents (1999-2021)



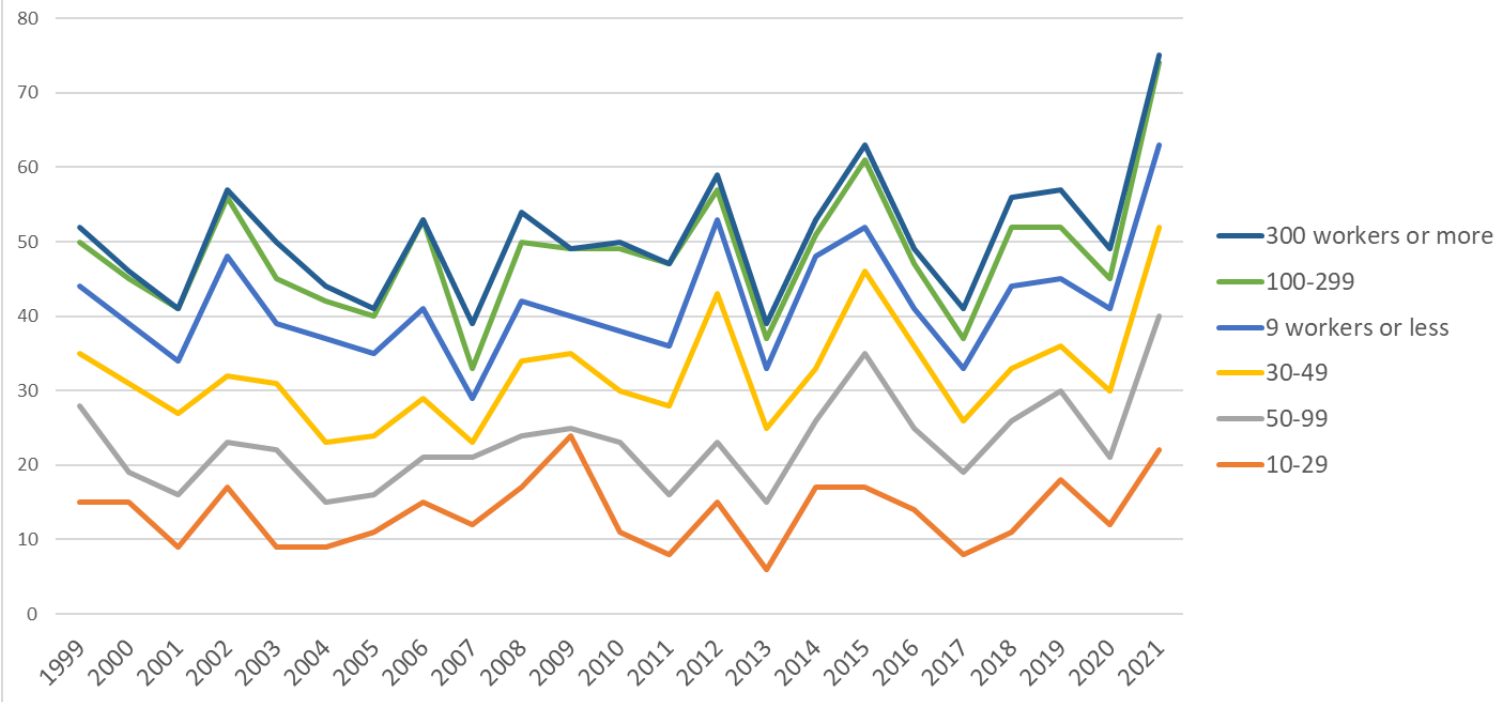
Transition of fatal and non-fatal accidents in type of accidents in code no. 100109 other movie/play service (1999-2021)

Transition of fatal and non-fatal accidents in workers ages (1999-2021)



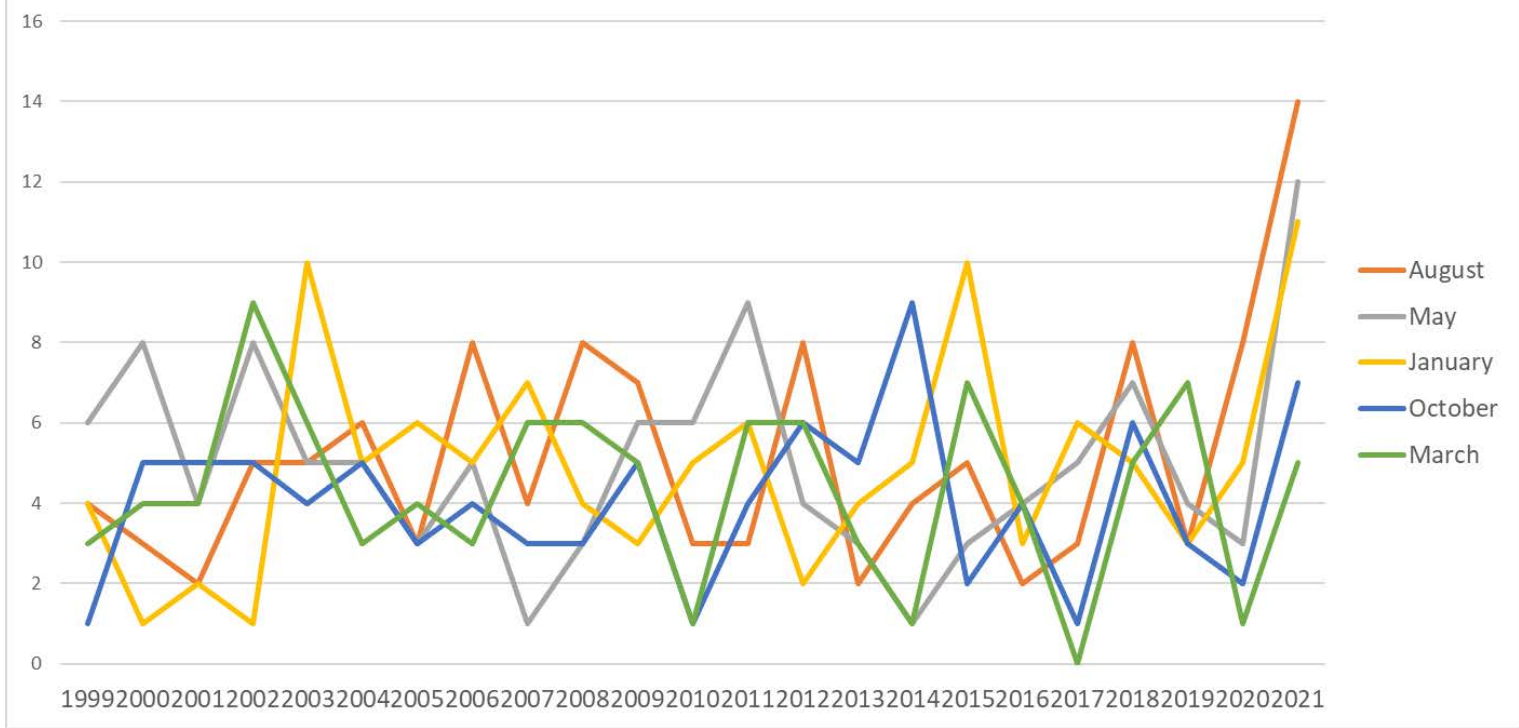
Transition of fatal and non-fatal accidents in workers ages in code no. 100109 other movie/play service (1999-2021)

Transition of fatal and non-fatal accidents in workers scales (1999-2021)



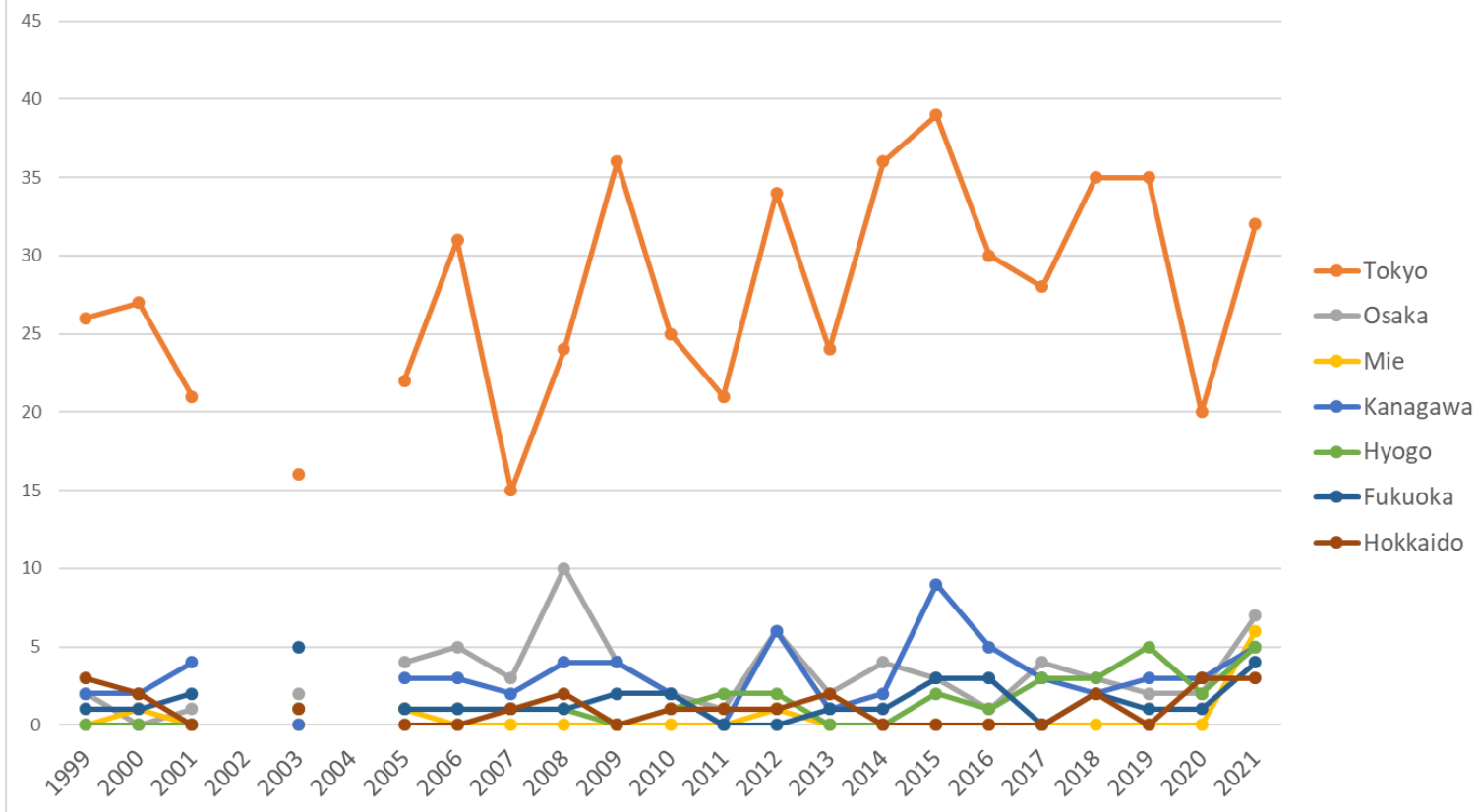
Transition of fatal and non-fatal accidents in workers scales in code no. 100109 other movie/play service (1999-2021)

Transition of fatal and non-fatal accidents in top 5 months (1999-2021)



Transition of fatal and non-fatal accidents in months in code no. 100109 other movie/play service (1999-2021)

Transition of fatal and non-fatal accidents in top 7 prefectures (1999-2021)



Transition of fatal and non-fatal accidents in prefectures in code no. 100109 other movie/play service (1999-2021)

Transition of fatal and non-fatal accidents in large causal agents in code no. 100109 other movie/play service (1999-2021)

code	Causal (L) agents	1999	2000	2001	2002	2003	2004	2005	2006	2007	2008	2009	2010	2011	2012	2013	2014	2015	2016	2017	2018	2019	2020	2021	total	Causal (L) agents
4	temporary buildings, establishments	18	15	8	24	15	10	7	30	15	17	24	16	12	17	13	9	11	16	10	23	18	18	24	370	temporary buildings, establishments
9	others	6	5	6	7	5	6	4	5	4	8	5	12	11	11	7	10	15	7	9	9	13	8	24	197	others
																										other

3	other equipment	8	10	10	13	11	9	11	6	7	11	7	9	4	14	4	17	14	9	10	13	14	7	12	230	equipment
2	crane, conveying machine	13	8	5	4	8	7	3	6	1	7	3	5	6	5	5	8	4	9	6	4	5	5	4	131	crane, conveying machine
7	environment	1		2	2	1	2	3	1	2	1	1	2	5			3	2	1		1	2	5	4	41	environment
5	substance, material	2	3	5	1	2	5	4	1	1	3	5	4	3	5	5	3	4		2	5	3	1	3	70	substance, material
6	load	3	2	5	3	5	3	5	2	4	3	1	2	6	4	4	2	9	5	2		2	2	3	77	load
1	machine	1	3		3	3	2	4	2	5	4	3			3	1	1	4	2	2	1		3	1	48	machine
	total	52	46	41	57	50	44	41	53	39	54	49	50	47	59	39	53	63	49	41	56	57	49	75	1,164	total

Transition of fatal and non-fatal accidents in middle causal agents in code no. 100109 other movie/play service (1999-2021)

code	Causal (M) agents	1999	2000	2001	2002	2003	2004	2005	2006	2007	2008	2009	2010	2011	2012	2013	2014	2015	2016	2017	2018	2019	2020	2021	total	Causal (M) agents
41	temporary buildings, establishments	18	15	8	24	15	10	7	30	15	17	24	16	12	17	13	9	11	16	10	23	18	18	24	370	temporary buildings, establishments
91	other causal agent		1	3	2		1				4	1	2	2	2	2	3	5		1	2	3	3	13	50	other causal agent
92	no causal agent	5	3	3	4	5	5	4	5	3	4	3	10	9	9	5	6	10	7	8	7	10	5	11	141	no causal agent
37	tools	4	4	5	3	4	6	5	3	2	6	1	5	3	5	3	9	8	7	5	10	7	2	5	112	tools
39	other equipments, facilities	3	4	4	6	2	1	1	1	2	1	2	3		4	1	5	4		3	1	2	4	4	58	other equipments, facilities

71	natural environment	1		2	2	1	2	3	1	2	1	1	2	5			3	2	1		1	2	5	4	41	natural environment	
23	vehicle	11	5	4	4	7	2	1	1		4	2	4	5	2	3	4	3	5	2	2		4	3	78	vehicle	
61	load	3	2	5	3	5	3	5	2	4	3	1	2	6	4	4	2	9	5	2		2	2	3	77	load	
52	materials	2	3	5	1	1	5	4	1	1	3	4	2	3	5	4	3	4		2	4	3	1	3	64	materials	
36	human power machine, tools	1	2	1	4	4	2	5	1	3	4	4	1	1	5		3	2	2	2	2	1	5	1	2	56	human power machine, tools
22	conveying machine	2	1			1	5	1	2	1	1	1	1	1	2	1	4	1	3	3	2	4	1	1	39	conveying machine	
16	general machine	1			1	2	1	1	1	1	1	1									1	1			1	13	general machine
31	pressure vessel																							1	1	pressure vessel	
13	woodworking machine		3		1	1	1	2	1	3	3	2			3	1	1	3	1	1			2		29	woodworking machine	
21	crane		2	1				1	3		2				1	1			1	1		1			14	crane	
51	hazards, harmful substances					1						1	2			1						1			6	hazards, harmful substances	
99	unclassifiable	1	1		1					1		1					1								6	unclassifiable	
14	construction machine				1			1		1															4	construction machine	
35	electric equipment					1			1												1				3	electric equipment	
	power transmission																									power	

417	passage			2		3			5	4	4	6	4	3	7	1	2		4	2	5	1	7	3	63	passage	
371	ladder			2		1		4	3	2	2	1	3	3	3	2	7	4	5	4	7	3	1	3	60	ladder	
231	cars, bus, motorcycle			4		7		1			4	1	3	5	2	3	4	3	5	2	2		3	3	52	cars, bus, motorcycle	
611	load			4		4		3	2	4	3	1	1	4	3	3	2	7	3	2		1	2	3	52	load	
419	other temporary buildings, establishments			2		2			8	1	1	3	3	1		1	1	2	3	4	5	3	4	3	47	other temporary buildings, establishments	
719	other environments					1		3	1	2				3			1		1		1	1	5	3	22	other environments	
411	scaffolding							2	2		1	2	1			1	1			1	1	2		3	17	scaffolding	
379	other tools			3		3		1			4		2		2	1	2	4	2	1	3	4	1	2	35	other tools	
416	working platform, boot board			1		3		1	5	3	1	5	2	3	4	2	2	2	3	1	1	1	2	1	43	working platform, boot board	
362	human power hauling equipment					2		3		3	2	3	1	1	4		2	2	2	1	1	4	1	1	33	human power hauling equipment	
221	truck					1		1	2	1	1		1	1	1	1	3	1	2	2	2	4	1	1	26	truck	
521	metal material			1				2		1	1	1		2	3	3	1	3			1			1	20	metal material	
529	other materials			3				2	1			2			1	1					2	2	1	1	16	other materials	
414	opening					1						1				1	1					1			1	6	opening
169	other general power machines							1												1	1			1	4	other general power machines	
715	high/cold temperature environment			1																				1	3	high/cold temperature environment	

06	crashed by	2	2	2		1	1	2		3	4	2		2	4		1	6	2	1	1	3	2	3	44	crashed by
07	caught in/between	3	4	3	4	4	3	5		2	8	2	5	2	4	3	4	6	4			6	1	2	75	caught in/between
04	struck by flying or falling object	3	1	2	4	1	2	5	4	3	1	5		4	6	4	2	4		2	1	4	2	2	62	struck by flying or falling object
08	cut	2	4	3	1	4	4	2	2	4	3	3			4	1	2	3	2	3	4	2	3	1	57	cut
17	traffic accident (public road)	7	2	3	4	7	5		1		3	1	2	5		3	4	2	3	1	2		1	1	57	traffic accident (public road)
11	contact to high/low-temperature			1	1	1					1	1			1	1				1	1			1	10	contact to high/low-temperature
15	burst																							1	1	burst
99	unclassifiable		1		1									2						1					5	unclassifiable
14	explosion												2												2	explosion
09	injury to the sole of the foot			1																					1	injury to the sole of the foot
10	drown													1											1	drown
12	contact to harmful substance														1										1	contact to harmful substance
18	traffic accident (others)				1																				1	traffic accident (others)
13	electric shock																									electric shock
16	fire																									fire
	total	52	46	41	57	50	44	41	53	39	54	49	50	47	59	39	53	63	49	41	56	57	49	75	1,164	total

Transition of fatal and non-fatal accidents in workers ages in code no. 100109 other movie/play service (1999-2021)

code	Age	1999	2000	2001	2002	2003	2004	2005	2006	2007	2008	2009	2010	2011	2012	2013	2014	2015	2016	2017	2018	2019	2020	2021	total	Age
2	20-29	31	22	23	28	21	20	10	19	11	16	20	20	12	22	13	22	20	17	12	21	28	12	36	456	20-29
3	30-39	9	12	10	23	12	9	13	20	12	18	13	13	14	13	13	11	19	10	10	11	12	14	17	308	30-39
5	50-59	4	1	2	2	5	4	5	4	4	5	5	5	8	7	4	5	7	8	8	8	8	9	11	129	50-59
4	40-49	6	7	6	3	9	6	9	4	8	13	9	11	13	12	7	9	15	9	8	12	4	7	7	194	40-49
6	60 years old or more	1	1		1	1	5	3	5	2	2	2	1		4	1	4	2	4	2	3	2	7	2	55	60 years old or more
1	19 years old or less	1	3			2		1	1	2					1	1	2		1	1	1	3		2	22	19 years old or less
	total	52	46	41	57	50	44	41	53	39	54	49	50	47	59	39	53	63	49	41	56	57	49	75	1,164	total

Transition of fatal and non-fatal accidents in workers scales in code no. 100109 other movie/play service (1999-2021)

code	Workers scale	1999	2000	2001	2002	2003	2004	2005	2006	2007	2008	2009	2010	2011	2012	2013	2014	2015	2016	2017	2018	2019	2020	2021	total	Workers scale
2	10-29	15	15	9	17	9	9	11	15	12	17	24	11	8	15	6	17	17	14	8	11	18	12	22	312	10-29
4	50-99	13	4	7	6	13	6	5	6	9	7	1	12	8	8	9	9	18	11	11	15	12	9	18	217	50-99
3	30-49	7	12	11	9	9	8	8	8	2	10	10	7	12	20	10	7	11	11	7	7	6	9	12	213	30-49
1	9 workers or less	9	8	7	16	8	14	11	12	6	8	5	8	8	10	8	15	6	5	7	11	9	11	11	213	9 workers or less
5	100-299	6	6	7	8	6	5	5	12	4	8	9	11	11	4	4	3	9	6	4	8	7	4	11	158	100-299
6	300 workers or more	2	1		1	5	2	1		6	4		1		2	2	2	2	2	4	4	5	4	1	51	300 workers or more
	total	52	46	41	57	50	44	41	53	39	54	49	50	47	59	39	53	63	49	41	56	57	49	75	1,164	total

Transition of fatal and non-fatal accidents in months in code no. 100109 other movie/play service (1999-2021)

code	Month	1999	2000	2001	2002	2003	2004	2005	2006	2007	2008	2009	2010	2011	2012	2013	2014	2015	2016	2017	2018	2019	2020	2021	total	Month
8	August	4	3	2	5	5	6	3	8	4	8	7	3	3	8	2	4	5	2	3	8	3	8	14	118	August
5	May	6	8	4	8	5	5	3	5	1	3	6	6	9	4	3	1	3	4	5	7	4	3	12	115	May
1	January	4	1	2	1	10	5	6	5	7	4	3	5	6	2	4	5	10	3	6	5	3	5	11	113	January
10	October	1	5	5	5	4	5	3	4	3	3	5	1	4	6	5	9	2	4	1	6	3	2	7	93	October
3	March	3	4	4	9	6	3	4	3	6	6	5	1	6	6	3	1	7	4		5	7	1	5	99	March
6	June	8	2	3	3	4	5	3	1		2	2	5	4	6	6	8	3	5	2	4	5	5	5	91	June
7	July	6		3	7	1	1	2	6	7	7	8	5	4	7	1	6	10	5	6	4	6	3	4	109	July
4	April	4	8	6	3	5	3	6	7	5	5	2	6	2	2		5	6	5	4	5	8		4	101	April
9	September	5	2	2	4	3	2	4	4	3	3	2	4	1	7	3	4	6	4	5	4	7	6	4	89	September
2	February	5	4	4	5	1	3	4	4	2	5	4	4	3		2	3	7	8	3	3	4	5	3	86	February
11	November	4	5	2	6	3	2	2	4		6	3	6	5	4	4	1	2	2	2	4	4	7	3	81	November
12	December	2	4	4	1	3	4	1	2	1	2	2	4		7	6	6	2	3	4	1	3	4	3	69	December
	total	52	46	41	57	50	44	41	53	39	54	49	50	47	59	39	53	63	49	41	56	57	49	75	1,164	total

Transition of fatal and non-fatal accidents in prefectures in code no. 100109 other movie/play service (1999-2021)

code	Prefecture	1999	2000	2001	2002	2003	2004	2005	2006	2007	2008	2009	2010	2011	2012	2013	2014	2015	2016	2017	2018	2019	2020	2021	total	Prefecture
13	Tokyo	26	27	21		16		22	31	15	24	36	25	21	34	24	36	39	30	28	35	35	20	32	577	Tokyo
27	Osaka	2		1		2		4	5	3	10	4	2	1	6	2	4	3	1	4	3	2	2	7	68	Osaka
24	Mie		1					1							1									6	9	Mie
14	Kanagawa	2	2	4				3	3	2	4	4	2		6	1	2	9	5	3	2	3	3	5	65	Kanagawa
28	Hyogo					1		1	1	1	1		1	2	2			2	1	3	3	5	2	5	31	Hyogo
40	Fukuoka	1	1	2		5		1	1	1	1	2	2			1	1	3	3		2	1	1	4	33	Fukuoka

1	Hokkaido	3	2			1				1	2		1	1	1	2					2		3	3	22	Hokkaido	
23	Aichi	2	7	6		3		4	2	2	2	2	7	4		2	1		1		2	3	1	2	53	Aichi	
26	Kyoto	1	2			5				2	2			1	3	1	4		2		2			2	27	Kyoto	
47	Okinawa		1	1		1			1				1									1		2	8	Okinawa	
8	Ibaraki																						1	2	3	Ibaraki	
11	Saitama		1	1		2		1	3	2	1		1	2	2	1	1	1	2		1	3	2	1	28	Saitama	
12	Chiba			1									2	5	2	2	3	2	2		1	1		1	22	Chiba	
9	Tochigi					4		1			1		3	3									2	1	15	Tochigi	
22	Shizuoka		1					1	2	3											1	1	2	1	1	13	Shizuoka
44	Oita					1			1	1					2						1			1	1	8	Oita
17	Ishikawa	8		1																						9	Ishikawa
15	Niigata	1				6								1												8	Niigata
4	Miyagi	2		2				1													1			1		7	Miyagi
34	Hiroshima									2	1			1							1		1	1		7	Hiroshima
5	Akita	1				1		1		1			1	1												6	Akita
20	Nagano	2				1				2																5	Nagano
25	Shiga										1			2										1		4	Shiga
42	Nagasaki		1			1			1						1											4	Nagasaki
45	Miyazaki								1		1			1										1		4	Miyazaki
3	Iwate	1									1											1				3	Iwate
7	Fukushima																					2		1		3	Fukushima
19	Yamanashi									1			1											1		3	Yamanashi
38	Ehime								1						1									1		3	Ehime

43	Kumamoto									1												2		3	Kumamoto	
10	Gunma							1								1								2	Gunma	
33	Okayama										1	1												2	Okayama	
2	Aomori															1								1	Aomori	
6	Yamagata			1																				1	Yamagata	
21	Gifu												1											1	Gifu	
29	Nara																					1		1	Nara	
30	Wakayama																					1		1	Wakayama	
37	Kagawa																	1						1	Kagawa	
39	Kochi															1								1	Kochi	
46	Kagoshima														1									1	Kagoshima	
16	Toyama																								Toyama	
18	Fukui																								Fukui	
31	Tottori																								Tottori	
32	Shimane																								Shimane	
35	Yamaguchi																								Yamaguchi	
36	Tokushima																								Tokushima	
41	Saga																								Saga	
	total	52	46	41		50		41	53	39	54	49	50	47	59	39	53	63	49	41	56	57	49	75	1,063	total

Data source : <https://anzeninfo.mhlw.go.jp/user/anzen/tok/anst00.htm>

Return to https://www.jisha.or.jp/english/statistics/202211_23.html