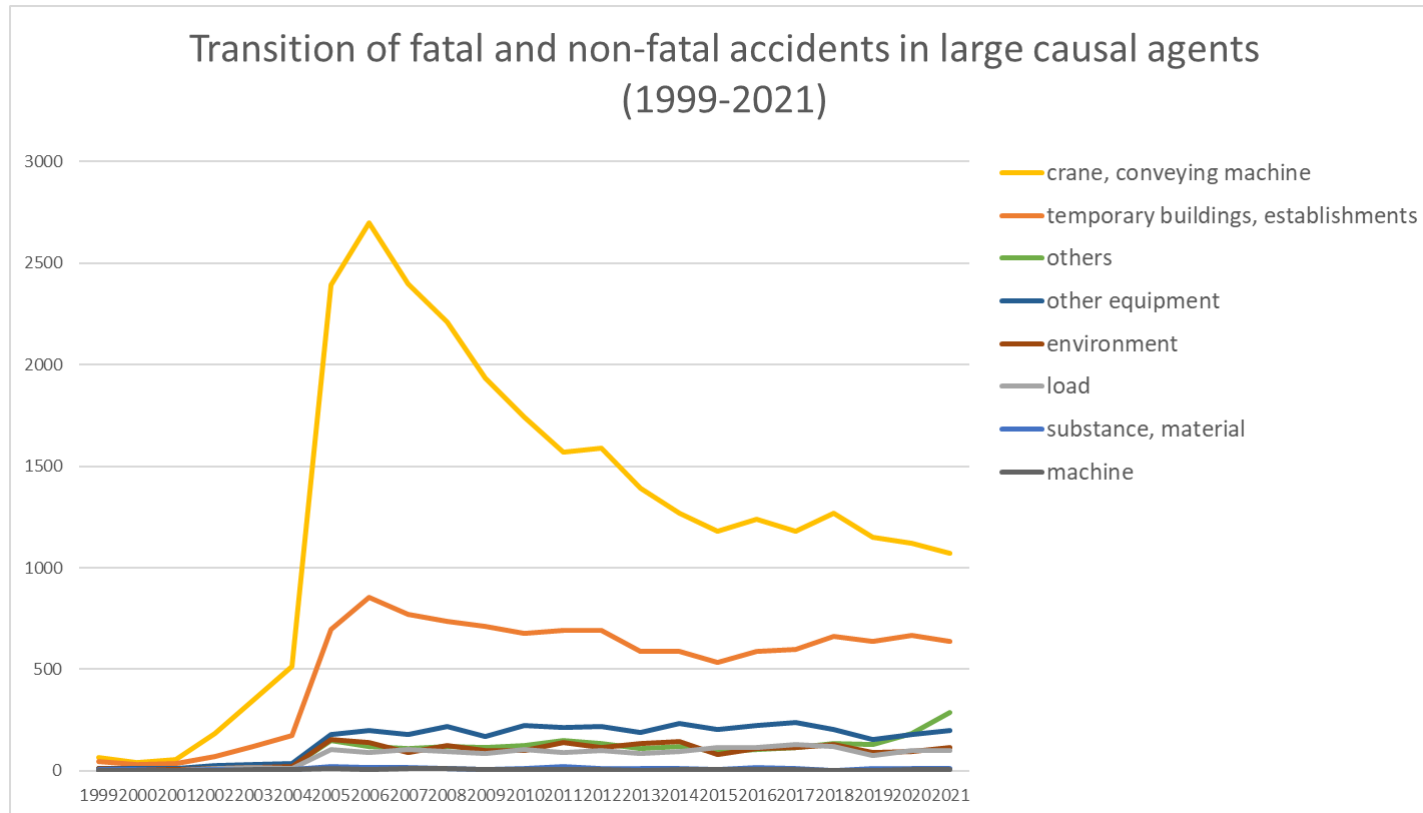
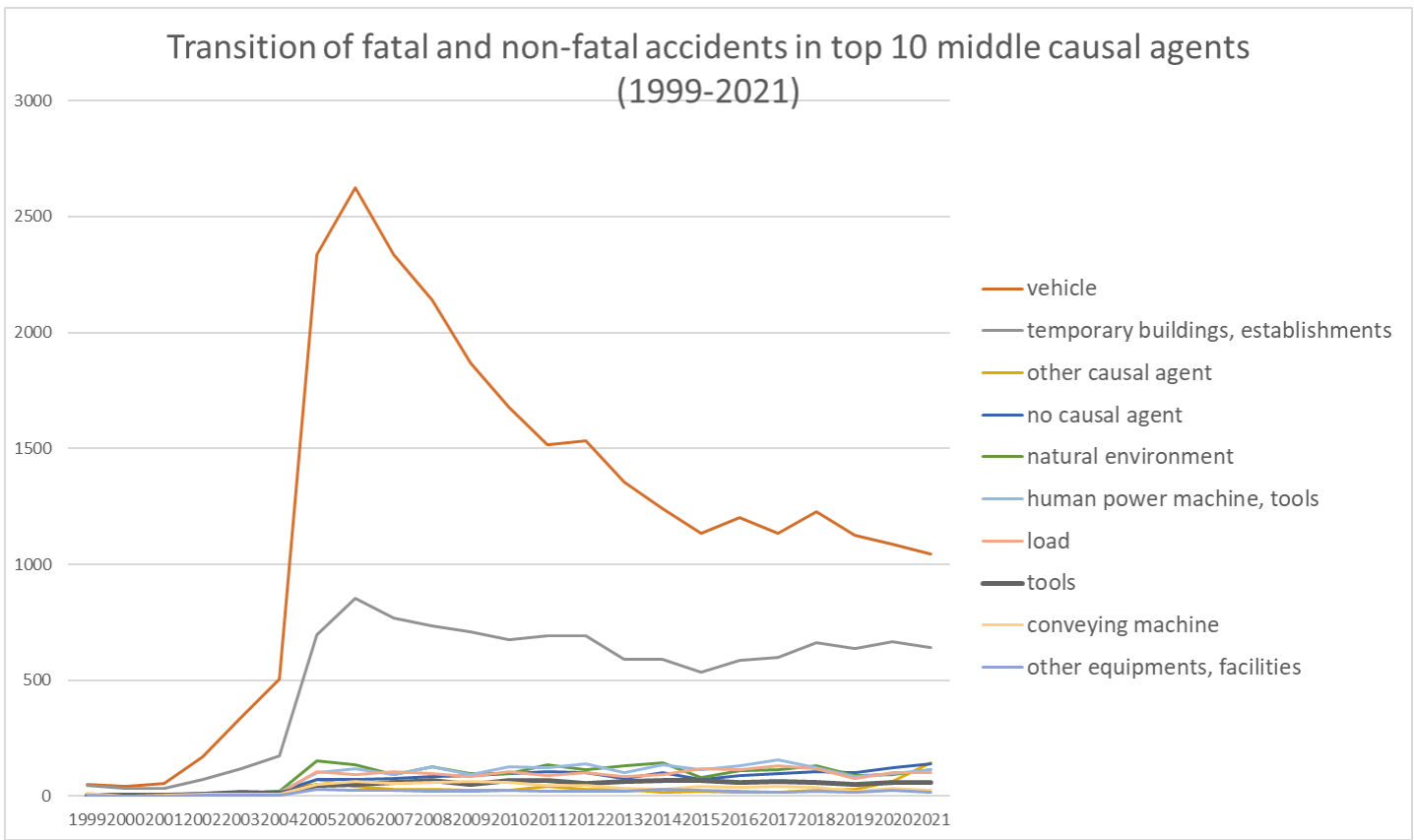


Transition of fatal and non-fatal accidents in each element like as causal agents, type of accidents, etc. in code no. 1101 telecommunication service (1999-2021)

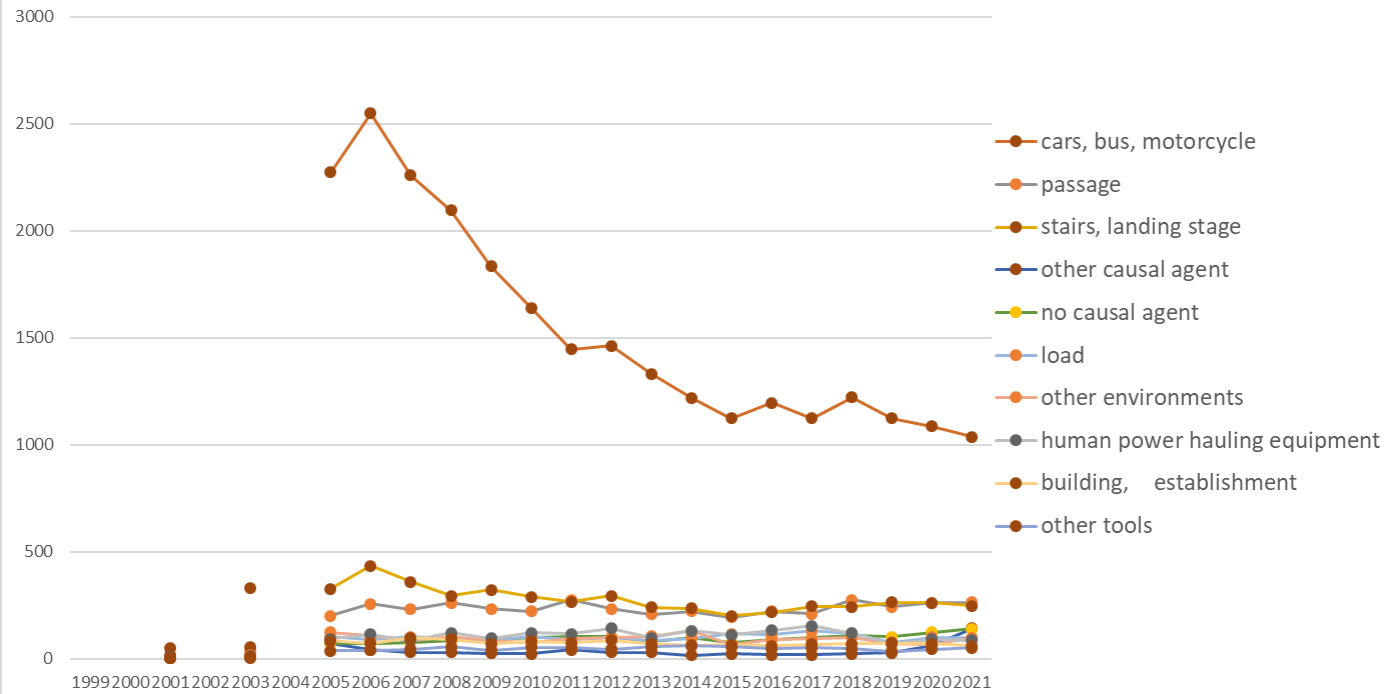


Transition of fatal and non-fatal accidents in large causal agents in code no. 1101 telecommunication service (1999-2021)



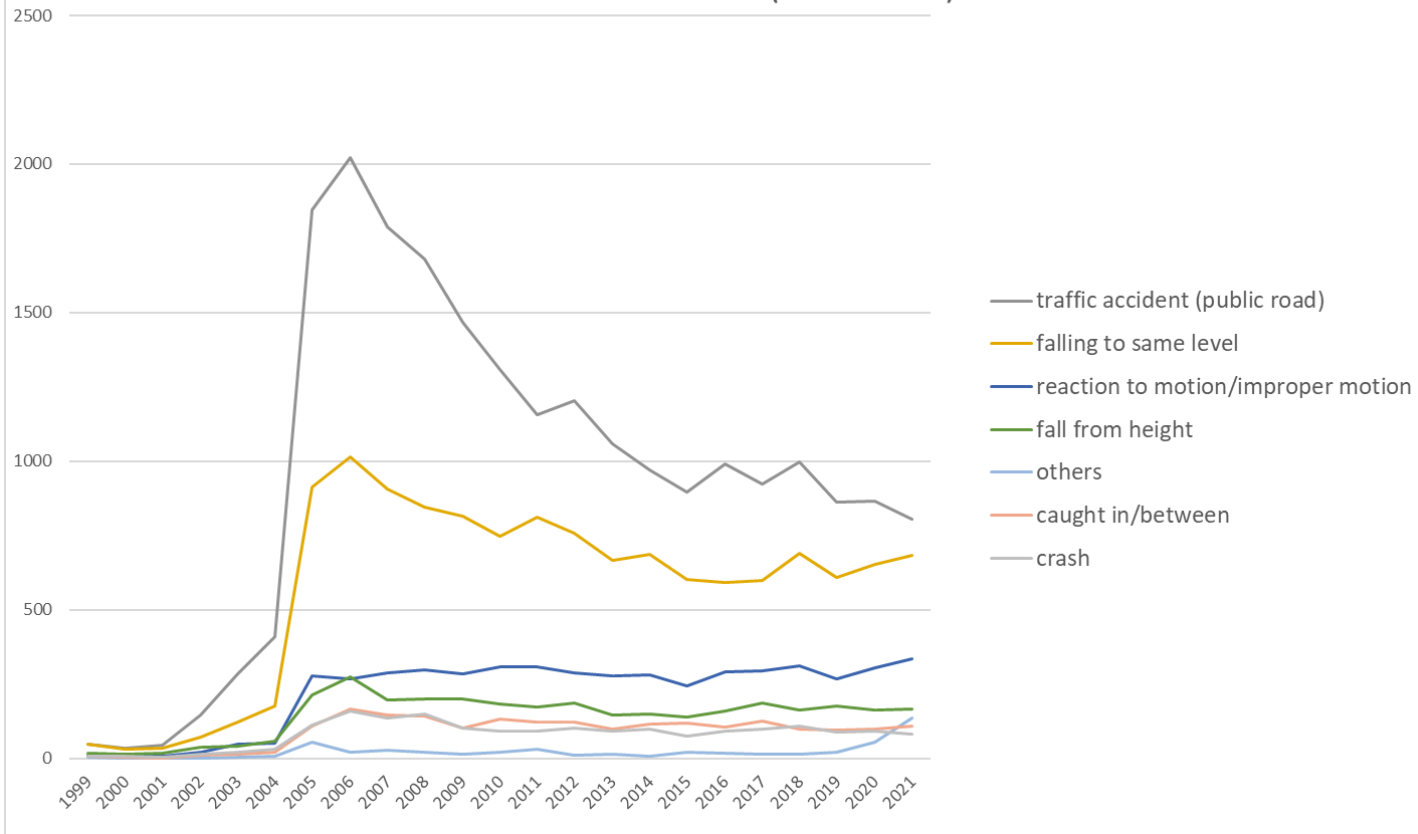
Transition of fatal and non-fatal accidents in middle causal agents in code no. 1101 telecommunication service (1999-2021)

Transition of fatal and non-fatal accidents in top 10 small causal agents (1999-2021)



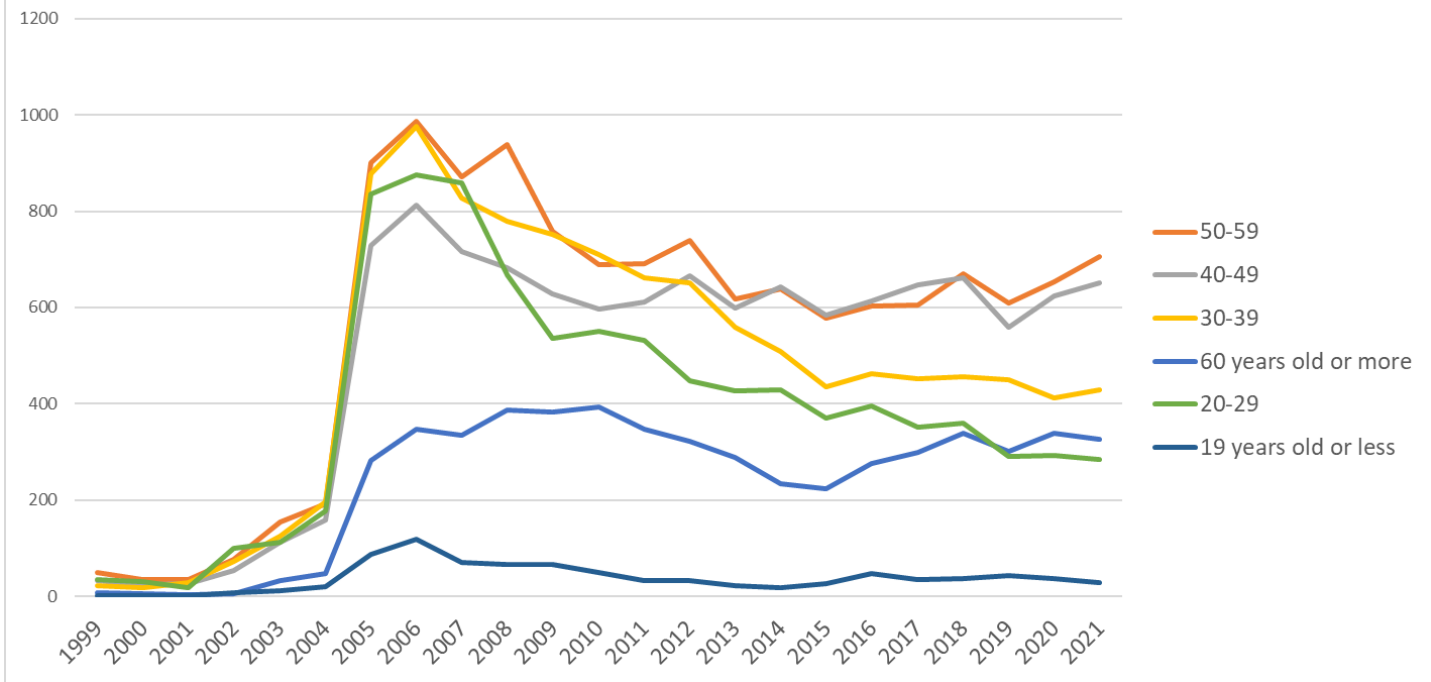
Transition of fatal and non-fatal accidents in small causal agents in code no. 1101 telecommunication service (1999-2021)

Transition of fatal and non-fatal accidents in top 7 type of accidents
(1999-2021)



Transition of fatal and non-fatal accidents in type of accidents in code no. 1101 telecommunication service (1999-2021)

Transition of fatal and non-fatal accidents in workers ages (1999-2021)



Transition of fatal and non-fatal accidents in workers ages in code no. 1101 telecommunication service (1999-2021)

12	contact to harmful substance				2		1	1		1	1		1		1			2	1		1	1		13	contact to harmful substance	
13	electric shock								1			1				1								3	electric shock	
14	explosion													1								2		3	explosion	
16	fire							1					1					1						3	fire	
15	burst																								burst	
	total	150	114	117	317	554	792	3,711	4,117	3,681	3,524	3,125	2,986	2,876	2,860	2,513	2,469	2,220	2,396	2,393	2,523	2,252	2,362	2,425	50,477	total

Transition of fatal and non-fatal accidents in workers ages in code no. 1101 telecommunication service (1999-2021)

code	Age	1999	2000	2001	2002	2003	2004	2005	2006	2007	2008	2009	2010	2011	2012	2013	2014	2015	2016	2017	2018	2019	2020	2021	total	Age
5	50-59	49	35	36	77	155	192	901	987	872	939	759	688	691	740	617	638	578	602	606	670	609	654	705	12,800	50-59
4	40-49	34	25	27	54	113	159	728	812	716	683	628	596	612	665	599	642	585	613	648	661	558	625	651	11,434	40-49
3	30-39	23	18	29	72	126	196	877	977	828	780	751	709	661	651	560	508	436	462	453	456	450	412	430	10,865	30-39
6	60 years old or more	7	5	4	6	34	47	282	347	335	387	384	393	347	323	288	234	224	277	299	340	301	340	326	5,530	60 years old or more
2	20-29	35	30	19	101	113	178	835	875	859	668	536	550	532	447	426	429	370	395	351	359	291	293	284	8,976	20-29
1	19 years old or less	2	1	2	7	13	20	88	119	71	67	67	50	33	34	23	18	27	47	36	37	43	38	29	872	19 years old or less
	total	150	114	117	317	554	792	3,711	4,117	3,681	3,524	3,125	2,986	2,876	2,860	2,513	2,469	2,220	2,396	2,393	2,523	2,252	2,362	2,425	50,477	total

Transition of fatal and non-fatal accidents in workers scales in code no. 1101 telecommunication service (1999-2021)

code	Workers scale	1999	2000	2001	2002	2003	2004	2005	2006	2007	2008	2009	2010	2011	2012	2013	2014	2015	2016	2017	2018	2019	2020	2021	total	Workers scale
5	100-299	46	29	24	88	203	357	1,277	1,375	1,279	1,326	1,252	1,142	1,110	1,161	1,129	1,021	937	996	977	1,062	948	1,080	1,203	20,022	100-299
6	300 workers or more	48	46	50	134	192	302	1,427	1,841	1,751	1,531	1,242	1,268	1,188	1,133	1,025	1,145	1,019	1,113	1,163	1,151	980	963	865	21,577	300 workers or more
4	50-99	18	12	16	42	80	85	463	461	308	337	376	304	288	291	184	163	141	178	158	183	184	196	197	4,665	50-99

1	9 workers or less	14	8	7	8	15	13	85	71	116	97	81	75	95	93	57	65	75	59	48	71	74	60	87	1,374	9 workers or less
2	10-29	17	11	13	25	43	21	274	225	131	112	84	80	87	68	59	49	24	36	24	40	47	40	42	1,552	10-29
3	30-49	7	8	7	20	21	14	185	144	96	121	90	117	108	114	59	26	24	14	23	16	19	23	31	1,287	30-49
	total	150	114	117	317	554	792	3,711	4,117	3,681	3,524	3,125	2,986	2,876	2,860	2,513	2,469	2,220	2,396	2,393	2,523	2,252	2,362	2,425	50,477	total

Transition of fatal and non-fatal accidents in months in code no. 1101 telecommunication service (1999-2021)

code	Month	1999	2000	2001	2002	2003	2004	2005	2006	2007	2008	2009	2010	2011	2012	2013	2014	2015	2016	2017	2018	2019	2020	2021	total	Month
1	January	9	13	13	14	28	86	387	456	325	414	358	339	314	318	316	223	234	247	227	339	229	199	286	5,374	January
3	March	9	9	15	17	31	54	341	293	347	262	252	235	262	229	183	200	177	162	203	238	168	165	218	4,070	March
8	August	13	12	4	36	48	58	358	293	325	258	217	231	222	172	193	201	176	184	169	178	197	176	208	3,929	August
12	December	12	4	11	14	87	70	320	407	293	321	294	313	274	336	240	258	217	217	243	217	186	237	204	4,775	December
10	October	9	14	14	25	59	77	292	362	297	268	270	253	245	237	223	202	184	197	257	189	174	192	195	4,235	October
9	September	16	5	11	30	32	58	241	305	244	229	202	195	239	214	163	172	161	205	191	170	176	182	195	3,636	September
7	July	19	11	8	35	58	63	314	375	372	283	286	273	222	223	215	207	216	209	190	218	234	266	194	4,491	July
4	April	12	8	5	48	41	81	261	308	315	276	235	229	207	191	182	164	165	189	175	160	150	200	193	3,795	April
2	February	14	6	11	18	26	59	334	336	293	378	259	276	206	288	184	308	158	189	190	186	199	175	190	4,283	February
11	November	17	12	12	17	66	50	248	350	258	271	249	217	265	213	197	195	171	217	199	211	159	181	183	3,958	November
5	May	9	11	9	38	37	59	283	318	309	289	235	200	210	223	213	153	186	184	176	218	185	170	183	3,898	May
6	June	11	9	4	25	41	77	332	314	303	275	268	225	210	216	204	186	175	196	173	199	195	219	176	4,033	June
	total	150	114	117	317	554	792	3,711	4,117	3,681	3,524	3,125	2,986	2,876	2,860	2,513	2,469	2,220	2,396	2,393	2,523	2,252	2,362	2,425	50,477	total

Transition of fatal and non-fatal accidents in prefectures in code no. 1101 telecommunication service (1999-2021)

code	Prefecture	1999	2000	2001	2002	2003	2004	2005	2006	2007	2008	2009	2010	2011	2012	2013	2014	2015	2016	2017	2018	2019	2020	2021	total	Prefecture
13	Tokyo	33	31	17		94		353	428	315	274	230	259	222	270	250	239	198	197	207	222	197	204	188	4,428	Tokyo
27	Osaka	10	14	9		11		222	232	167	177	174	112	155	124	105	108	85	142	138	119	107	140	157	2,508	Osaka

1	Hokkaido	5	2	3		31		202	294	316	233	198	169	147	172	136	159	117	136	159	161	145	160	156	3,101	Hokkaido
23	Aichi	7	1	5		63		273	282	271	252	177	207	188	181	163	149	129	160	153	182	172	147	149	3,311	Aichi
11	Saitama	3	3	2		2		159	188	156	110	151	151	160	180	173	196	184	181	163	203	146	148	136	2,795	Saitama
14	Kanagawa	7	7	11		22		259	330	232	210	193	207	205	212	149	157	152	136	139	143	109	122	127	3,129	Kanagawa
28	Hyogo	7	4	6		12		149	152	107	103	112	107	98	69	88	59	76	121	99	119	83	94	115	1,780	Hyogo
12	Chiba	2	1			1		90	197	137	132	159	147	158	153	140	144	136	138	130	141	112	108	111	2,337	Chiba
22	Shizuoka	4		2		29		87	139	125	131	84	84	90	81	67	51	56	75	83	79	74	77	75	1,493	Shizuoka
34	Hiroshima	6	4	3		34		116	92	82	91	98	95	73	85	63	59	61	55	68	54	60	65	69	1,333	Hiroshima
40	Fukuoka	5	1	4		29		161	127	158	134	130	100	86	69	60	59	50	54	53	53	63	78	67	1,541	Fukuoka
10	Gunma	3	2	1		4		75	73	54	70	52	80	61	68	67	68	50	70	49	56	62	47	65	1,077	Gunma
26	Kyoto	3	1	4		5		65	58	54	60	71	50	44	60	50	40	43	38	53	49	36	53	55	892	Kyoto
33	Okayama	1	1			12		91	57	61	66	58	56	46	53	42	46	45	27	40	35	38	39	55	869	Okayama
8	Ibaraki	3	1	1		2		104	115	76	99	83	81	89	89	75	66	85	70	73	92	64	55	54	1,377	Ibaraki
9	Tochigi		3	4		2		65	93	74	52	4	5	61	64	49	62	50	57	53	54	56	60	51	919	Tochigi
15	Niigata	1	5	1		21		65	81	84	74	72	60	60	75	47	46	37	36	35	39	28	37	50	954	Niigata
20	Nagano		5	2		7		9	60	69	81	71	62	60	53	60	66	52	51	43	35	53	50	49	938	Nagano
24	Mie		1	2		35		91	100	90	65	66	65	58	64	41	33	47	33	42	38	44	27	41	983	Mie
29	Nara	1	1			2		47	32	28	32	41	37	25	19	33	34	28	38	40	31	21	27	39	556	Nara
38	Ehime			5		7		44	40	46	42	29	26	22	29	36	30	32	34	39	39	24	21	36	581	Ehime
4	Miyagi	1	1	3		6		91	89	97	90	77	83	74	70	65	60	55	54	53	50	42	40	31	1,132	Miyagi
42	Nagasaki	2		4		14		41	45	46	50	37	39	36	15	19	18	22	21	22	22	25	29	31	538	Nagasaki
7	Fukushima	4	1	1		6		78	105	95	76	73	53	59	57	46	38	32	31	33	47	41	42	30	948	Fukushima
21	Gifu	1	1	2		10		60	66	57	79	48	65	48	59	43	41	33	35	41	36	31	45	30	831	Gifu
3	Iwate	1		3		1		62	59	44	67	47	38	53	31	47	32	27	17	24	31	19	21	30	654	Iwate
2	Aomori	1	1	1		2		26	44	51	49	41	31	34	24	25	24	15	26	14	21	26	16	30	502	Aomori

44	Oita	6	1	2		6		47	33	27	36	42	24	20	22	15	18	16	25	20	18	14	30	29	451	Oita
35	Yamaguchi	1	1	6		24		70	59	61	47	44	34	30	39	32	28	31	18	21	29	25	21	26	647	Yamaguchi
17	Ishikawa	5	2	1		1		25	28	24	25	29	29	23	25	22	21	14	16	23	28	20	26	26	413	Ishikawa
25	Shiga	2	1					34	27	26	37	28	21	18	14	14	15	10	17	13	15	22	30	26	370	Shiga
45	Miyazaki	6				3		47	27	35	31	18	18	14	6	11	19	10	14	6	16	11	9	25	326	Miyazaki
16	Toyama	1		1		1		22	16	19	24	20	20	21	29	21	20	16	8	18	21	20	30	23	351	Toyama
43	Kumamoto	3	3	2		6		33	44	58	52	46	39	32	25	26	17	15	23	18	16	20	20	22	520	Kumamoto
47	Okinawa	2				2		14	12	21	19	20	19	23	28	18	32	27	27	29	15	18	18	22	366	Okinawa
46	Kagoshima	2	1	1		5		32	34	31	46	27	41	22	14	15	12	9	14	18	23	19	33	21	420	Kagoshima
36	Tokushima	2	2	1		5		20	21	14	24	21	24	19	23	27	23	17	29	18	17	23	19	21	370	Tokushima
32	Shimane	2	1			9		7	30	30	38	35	36	27	19	17	18	19	18	16	20	20	11	20	393	Shimane
30	Wakayama					2		35	14	27	24	32	32	21	12	17	24	18	18	21	17	12	20	20	366	Wakayama
37	Kagawa		1	1		8		31	27	41	27	24	33	28	30	20	21	22	25	14	26	19	21	19	438	Kagawa
5	Akita		1	2		3		24	18	27	24	31	20	29	30	20	19	14	15	21	20	26	21	19	384	Akita
19	Yamanashi	2	1			1		37	35	31	33	22	35	33	17	24	23	16	15	18	16	16	21	17	413	Yamanashi
18	Fukui					1		27	9	17	19	13	17	22	17	13	17	16	13	22	21	18	19	17	298	Fukui
41	Saga	1	1			7		21	28	37	23	29	20	15	12	9	7	8	10	3	9	16	8	16	280	Saga
39	Kochi	1	1	3		3		19	17	23	16	18	12	21	23	18	18	16	20	19	13	21	19	11	312	Kochi
6	Yamagata	1	3	1		2		54	47	25	60	36	32	34	36	23	26	22	26	26	21	23	17	9	524	Yamagata
31	Tottori	2	2			1		27	13	15	20	14	11	12	13	12	7	7	12	3	11	11	17	9	219	Tottori
	total	150	114	117		554		3,711	4,117	3,681	3,524	3,125	2,986	2,876	2,860	2,513	2,469	2,220	2,396	2,393	2,523	2,252	2,362	2,425	49,368	total

Data source : <https://anzeninfo.mhlw.go.jp/user/anzen/tok/anst00.htm>

Return to https://www.jisha.or.jp/english/statistics/202211_23.html