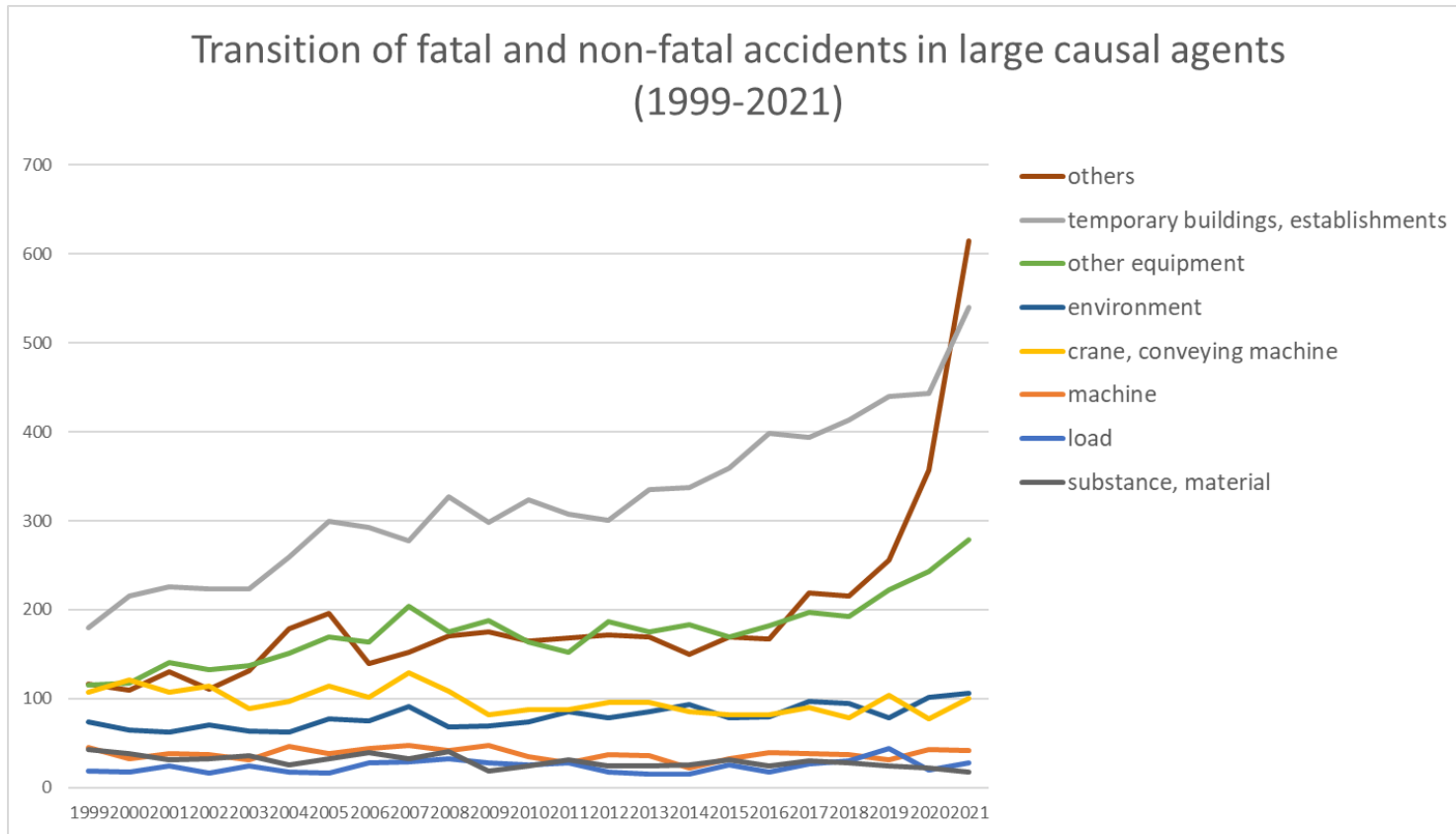
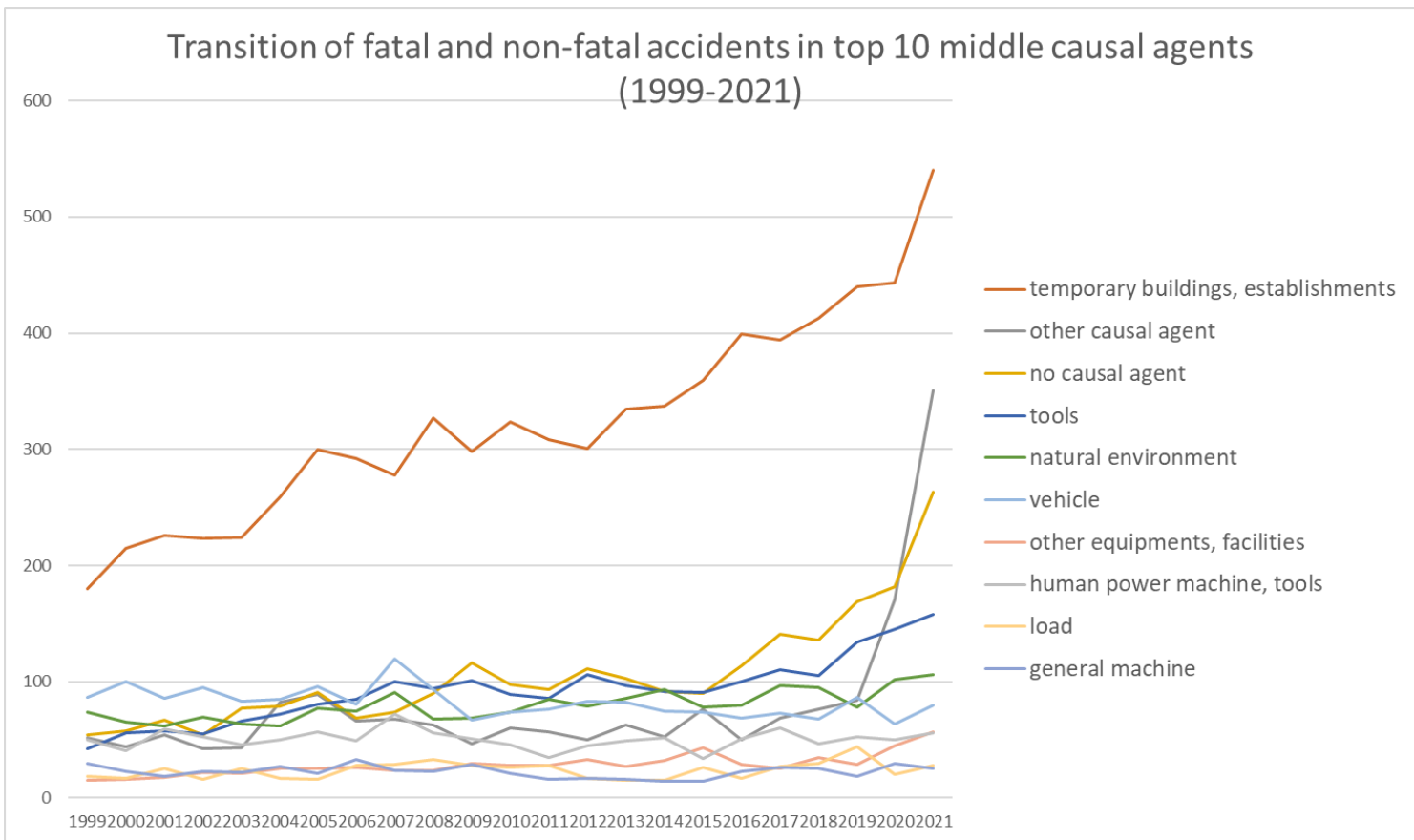


Transition of fatal and non-fatal accidents in each element like as causal agents, type of accidents, etc. in code no. 1201 education/research service (1999-2021)

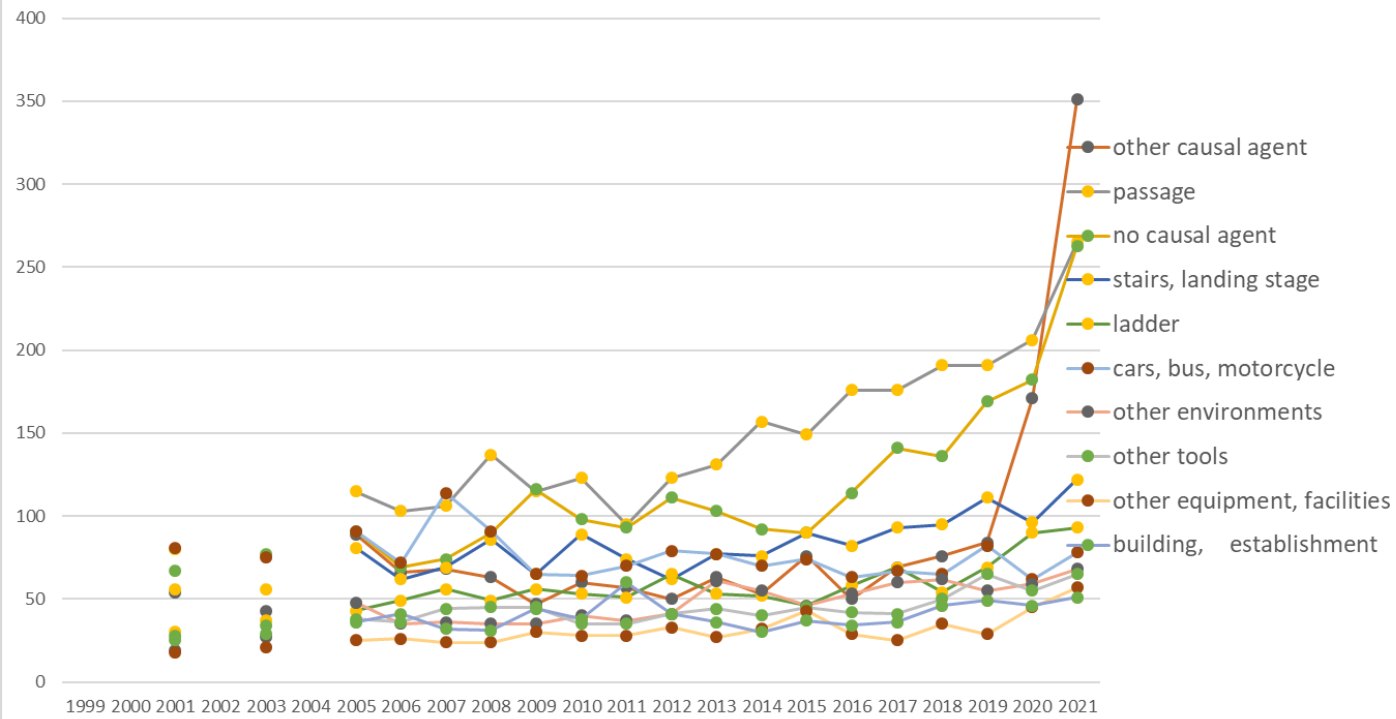


Transition of fatal and non-fatal accidents in large causal agents in code no. 1201 education/research service (1999-2021)



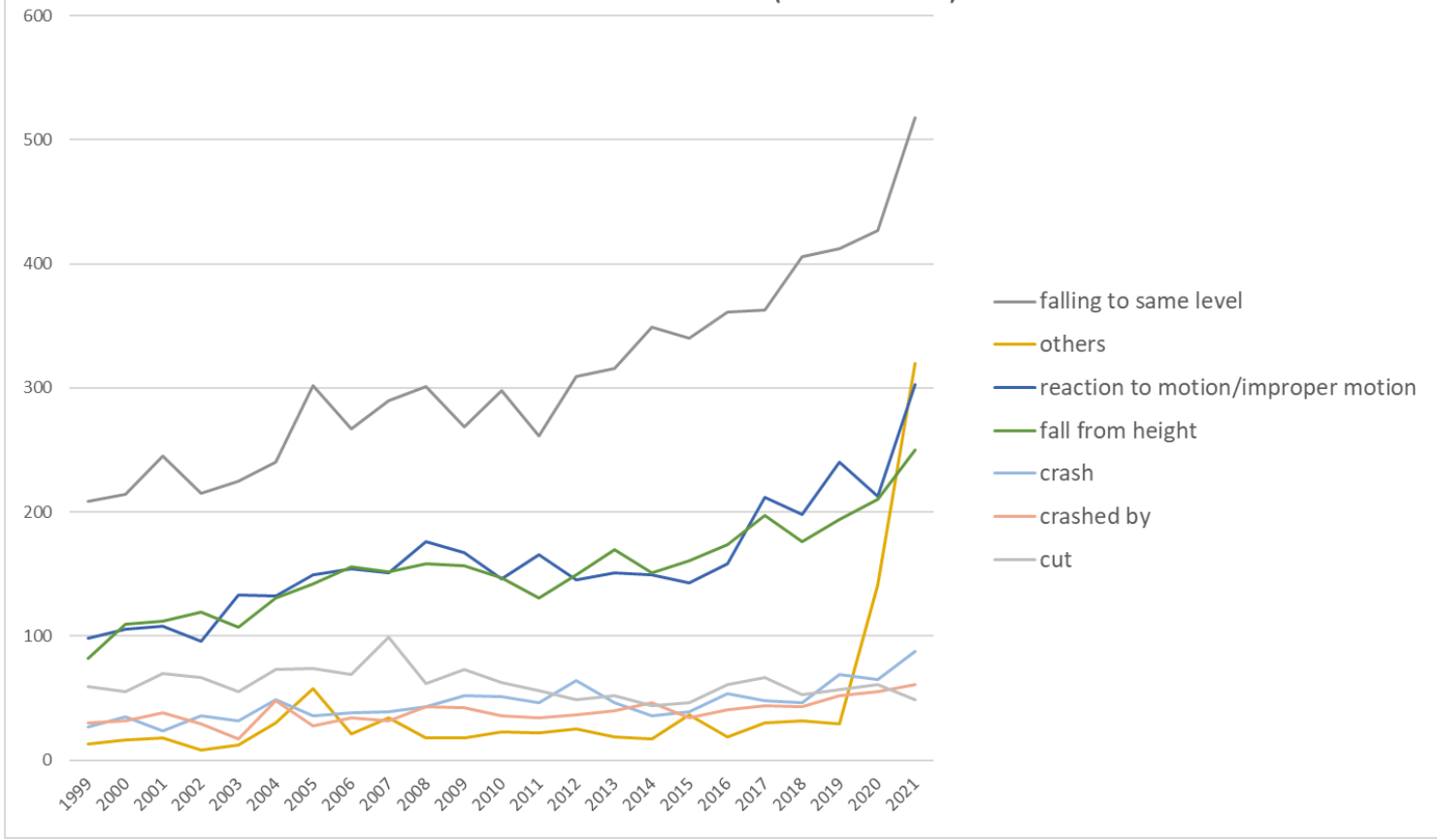
Transition of fatal and non-fatal accidents in middle causal agents in code no. 1201 education/research service (1999-2021)

Transition of fatal and non-fatal accidents in top 10 small causal agents (1999-2021)



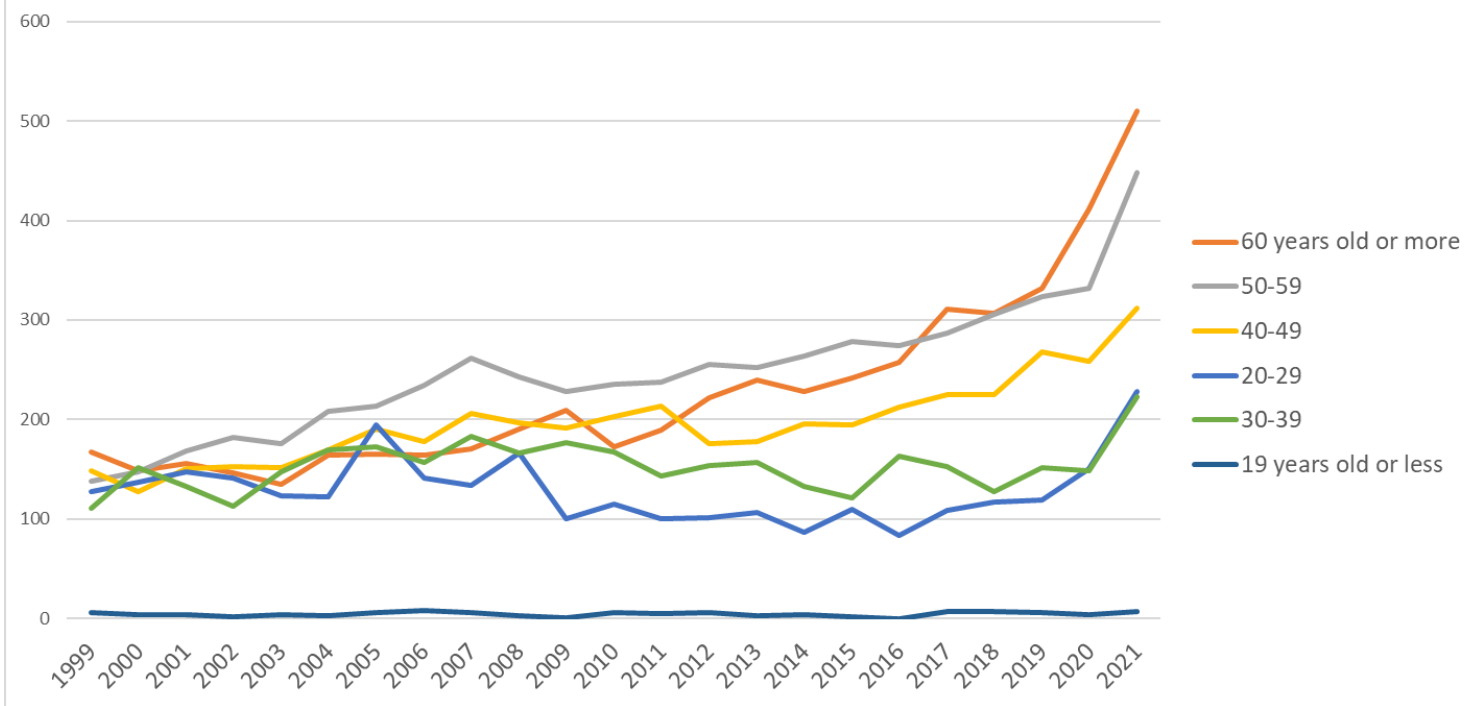
Transition of fatal and non-fatal accidents in small causal agents in code no. 1201 education/research service (1999-2021)

Transition of fatal and non-fatal accidents in top 7 type of accidents
(1999-2021)



Transition of fatal and non-fatal accidents in type of accidents in code no. 1201 education/research service (1999-2021)

Transition of fatal and non-fatal accidents in workers ages (1999-2021)



Transition of fatal and non-fatal accidents in workers ages in code no. 1201 education/research service (1999-2021)

11	temperature	22	17	15	21	22	17	16	16	21	20	19	17	17	14	12	17	19	12	10	19	18	20	17	398	high/low-temperature
05	collapse	6	6	4	7	7	4	6	11	10	16	6	6	12	3	5	5	5	8	8	8	10	6	8	167	collapse
99	unclassifiable	4	5	8	11	8	10	9	4	5	9	4	9	6	3	4	4	4	4	4	4	5	2	6	132	unclassifiable
12	contact to harmful substance	8	5	3	6	8	4	9	5	8	5	5	4	9	3	4	3	6	4	13	3	5	6	4	130	contact to harmful substance
14	explosion	1	3			5	5	3		2	3		1		1		1	5	2	1	2		1	1	37	explosion
09	injury to the sole of the foot		4	2	1	1	1		1	2	1	1	2	2	1	1		2	1	1	2	2	2	1	31	injury to the sole of the foot
15	burst	1	4	1	4	2	1	2		1	1	3	3				1	1	2	1	1	1		1	31	burst
13	electric shock				1	1						1	1	1				1		1				1	8	electric shock
18	traffic accident (others)	7	6	4	8	6	1	3	1	5	2	2	2	5	2	5	2	4	4	3	1	2	1		76	traffic accident (others)
10	drown	2	1			2	1	1			1	1		9	1	1				2	1				23	drown
16	fire	3		1			1		2			1		2	1	1		1							13	fire
	total	699	717	760	737	738	837	942	882	962	965	907	900	888	914	937	912	948	991	1,092	1,090	1,200	1,307	1,728	22,053	total

Transition of fatal and non-fatal accidents in workers ages in code no. 1201 education/research service (1999-2021)

code	Age	1999	2000	2001	2002	2003	2004	2005	2006	2007	2008	2009	2010	2011	2012	2013	2014	2015	2016	2017	2018	2019	2020	2021	total	Age
6	60 years old or more	167	149	156	146	135	164	165	164	171	190	209	173	189	222	240	228	242	258	311	307	332	412	510	5,240	60 years old or more
5	50-59	138	147	168	182	176	208	213	234	262	243	228	236	238	255	252	264	278	274	287	306	323	332	448	5,692	50-59
4	40-49	149	128	151	153	152	170	190	178	206	197	192	203	213	176	178	196	195	212	225	225	268	259	312	4,528	40-49
2	20-29	128	137	148	141	123	122	195	141	134	166	100	115	100	101	107	87	110	84	109	117	119	151	228	2,963	20-29

3	30-39	111	152	133	113	148	170	173	157	183	166	177	167	143	154	157	133	121	163	153	128	152	149	223	3,526	30-39
1	19 years old or less	6	4	4	2	4	3	6	8	6	3	1	6	5	6	3	4	2		7	7	6	4	7	104	19 years old or less
	total	699	717	760	737	738	837	942	882	962	965	907	900	888	914	937	912	948	991	1,092	1,090	1,200	1,307	1,728	22,053	total

Transition of fatal and non-fatal accidents in workers scales in code no. 1201 education/research service (1999-2021)

code	Workers scale	1999	2000	2001	2002	2003	2004	2005	2006	2007	2008	2009	2010	2011	2012	2013	2014	2015	2016	2017	2018	2019	2020	2021	total	Workers scale
2	10-29	200	179	188	208	183	208	213	227	224	231	214	227	204	208	218	242	243	248	281	272	301	300	469	5,488	10-29
3	30-49	103	124	123	123	127	142	140	124	149	156	139	141	124	152	141	163	140	135	194	200	218	254	350	3,662	30-49
4	50-99	92	114	113	99	113	109	121	119	137	135	127	97	122	120	135	109	139	125	141	144	188	214	291	3,104	50-99
1	9 workers or less	119	152	151	131	144	153	167	163	184	165	171	186	171	168	180	140	156	159	149	145	171	206	212	3,743	9 workers or less
6	300 workers or more	74	73	77	84	71	131	179	131	147	137	138	148	160	155	135	144	156	203	177	192	182	182	210	3,286	300 workers or more
5	100-299	111	75	108	92	100	94	122	118	121	141	118	101	107	111	128	114	114	121	150	137	140	151	196	2,770	100-299
	total	699	717	760	737	738	837	942	882	962	965	907	900	888	914	937	912	948	991	1,092	1,090	1,200	1,307	1,728	22,053	total

Transition of fatal and non-fatal accidents in months in code no. 1201 education/research service (1999-2021)

code	Month	1999	2000	2001	2002	2003	2004	2005	2006	2007	2008	2009	2010	2011	2012	2013	2014	2015	2016	2017	2018	2019	2020	2021	total	Month
4	April	48	58	63	44	55	86	73	64	76	83	82	72	76	75	83	64	105	66	101	84	90	94	194	1,836	April
8	August	62	48	57	66	58	39	42	67	77	60	59	64	64	65	49	51	52	80	84	83	91	91	185	1,594	August
1	January	58	65	67	61	60	69	98	83	94	85	83	86	86	98	76	76	98	110	90	107	92	101	178	2,021	January
5	May	62	82	82	63	67	63	71	89	94	85	78	96	80	81	91	82	90	82	73	113	96	69	160	1,949	May
6	June	63	71	55	74	81	77	93	85	91	86	93	86	88	78	80	88	89	103	109	107	118	161	152	2,128	June
9	September	65	60	73	61	62	79	89	78	91	101	74	83	70	73	75	88	68	93	104	81	108	117	138	1,931	September
10	October	57	63	60	79	69	69	77	81	80	88	71	70	80	71	88	63	77	89	94	86	135	115	137	1,899	October
7	July	69	63	68	78	62	65	115	67	92	80	95	86	54	81	71	88	79	83	85	93	107	122	133	1,936	July

3	March	63	49	43	59	38	67	72	55	72	66	70	68	85	63	60	70	80	65	73	81	79	83	129	1,590	March
2	February	66	55	59	47	77	72	80	78	64	95	64	67	81	88	105	101	83	78	103	100	91	87	114	1,855	February
11	November	44	55	72	66	54	88	68	81	74	74	80	68	64	73	91	70	67	90	89	78	105	107	108	1,766	November
12	December	42	48	61	39	55	63	64	54	57	62	58	54	60	68	68	71	60	52	87	77	88	160	100	1,548	December
	total	699	717	760	737	738	837	942	882	962	965	907	900	888	914	937	912	948	991	1,092	1,090	1,200	1,307	1,728	22,053	total

Transition of fatal and non-fatal accidents in prefectures in code no. 1201 education/research service (1999-2021)

code	Prefecture	1999	2000	2001	2002	2003	2004	2005	2006	2007	2008	2009	2010	2011	2012	2013	2014	2015	2016	2017	2018	2019	2020	2021	total	Prefecture
27	Osaka	62	75	53		61		70	57	70	79	58	74	40	47	48	58	71	82	74	78	84	84	140	1,465	Osaka
13	Tokyo	69	59	95		67		82	59	90	93	80	94	104	92	90	88	83	115	114	109	99	117	136	1,935	Tokyo
14	Kanagawa	27	43	44		57		94	50	73	109	73	65	67	73	69	70	82	80	74	75	88	79	108	1,500	Kanagawa
11	Saitama	30	40	38		50		42	43	53	46	47	35	51	48	59	52	28	39	44	46	53	55	89	988	Saitama
12	Chiba	26	23	35		33		42	61	47	54	31	50	36	32	36	40	42	37	41	46	54	76	87	929	Chiba
23	Aichi	28	33	24		28		43	41	30	44	50	35	37	38	35	48	43	48	50	43	53	70	77	898	Aichi
1	Hokkaido	31	30	24		23		58	50	67	38	49	43	38	40	42	37	41	54	66	52	77	61	75	996	Hokkaido
28	Hyogo	23	19	19		28		43	42	49	60	41	36	42	44	29	23	37	26	38	37	47	47	72	802	Hyogo
40	Fukuoka	22	43	48		26		29	35	32	41	33	33	26	36	40	30	37	39	42	37	36	45	71	781	Fukuoka
8	Ibaraki	12	16	24		19		31	30	33	21	43	32	37	34	35	33	36	38	38	36	44	28	59	679	Ibaraki
4	Miyagi	18	18	20		9		9	18	17	12	16	21	26	35	29	17	19	10	17	29	23	35	54	452	Miyagi
15	Niigata	10	6	13		11		26	28	15	17	18	14	16	12	22	22	17	10	20	18	29	29	52	405	Niigata
22	Shizuoka	49	34	35		34		32	34	28	29	19	22	31	22	24	36	37	29	42	37	40	38	50	702	Shizuoka
10	Gunma	22	21	12		16		21	13	19	11	17	25	16	9	18	13	16	21	29	20	28	31	35	413	Gunma
24	Mie	13	6	7		5		10	17	10	21	18	12	19	17	14	21	12	16	24	36	23	29	35	365	Mie
34	Hiroshima	15	25	21		16		21	20	22	24	24	19	22	29	17	21	14	25	25	29	44	32	32	497	Hiroshima

46	Kagoshima	8	9	15		7		12	6	14	5	6	4	14	14	14	13	21	19	20	18	22	30	32	303	Kagoshima
17	Ishikawa	15	4	7		8		14	6	10	5	9	19	8	16	14	11	7	12	15	17	13	18	32	260	Ishikawa
20	Nagano	13	10	14		14		12	8	17	19	18	12	18	14	29	16	22	21	13	13	17	30	31	361	Nagano
9	Tochigi	7	14	14		14		20	12	15	14	11	17	23	15	16	18	22	17	19	24	19	24	29	364	Tochigi
21	Gifu	13	12	12		4		16	15	7	7	11	12	13	14	11	13	21	18	12	12	19	16	29	287	Gifu
7	Fukushima	13	16	8		10		17	14	13	9	18	11	10	12	18	15	11	10	9	16	16	16	28	290	Fukushima
26	Kyoto	24	23	21		16		29	28	41	28	14	32	25	26	29	19	33	18	27	35	27	29	27	551	Kyoto
43	Kumamoto	9	8	16		20		11	12	13	23	17	19	7	9	12	8	9	17	13	11	14	20	24	292	Kumamoto
5	Akita	12	5	3		8		6	6	8	8	11	6	3	5	9	5	11	8	4	13	12	17	23	183	Akita
16	Toyama	7	4	3		6		9	6	8	10	9	2	8	13	4	6	12	9	8	9	8	17	23	181	Toyama
35	Yamaguchi	9	7	3		8		3	9	10	11	10	8	10	15	11	14	9	14	11	11	8	9	20	210	Yamaguchi
47	Okinawa	6	1	4		5		5	6	6	7	4	6	6	8	5	4	11	13	22	5	11	12	20	167	Okinawa
33	Okayama	13	6	15		15		11	14	9	19	14	22	14	20	10	17	19	8	16	12	19	36	18	327	Okayama
38	Ehime	1	2	5		1		7	5	4	5	5	5	4	5	7	7	4	6	12	7	18	15	18	143	Ehime
6	Yamagata	6	6	3		12		12	12	9	4	8	6	12	7	14	4	12	9	12	13	13	7	17	198	Yamagata
2	Aomori	9	5	6		7		6	10	4	5	5	9	10	10	23	10	11	10	9	8	9	9	17	192	Aomori
29	Nara	1	5	8		10		6	6	9	8	9	6	3	10	5	11	6	8	9	8	10	7	16	161	Nara
19	Yamanashi	2	3	4		6		3	4	2	1	4	3	2	6	9	9	9	8	3	3	6	4	16	107	Yamanashi
39	Kochi	3	4	4		6		8	6	8	4	10	9	4	7	8	6	1	6	5	13	8	12	15	147	Kochi
42	Nagasaki	12	3	8		10		8	12	12	11	9	3	7	8	7	9	4	12	13	13	12	12	13	198	Nagasaki
41	Saga	6	3	1		2		4	7	5	6	11	10	6	4	6	8	6	3	9	16	13	6	13	145	Saga
36	Tokushima	5	9	4		8		6	4	5		10	4	4	9	1	2	2	6	9	11	8	7	13	127	Tokushima
30	Wakayama	5	12	3		8		9	5	7	6	11	7	7	6	2	3	4	8	7	6	9	6	11	142	Wakayama
3	Iwate	11	10	9		11		13	6	11	5	7	15	18	12	19	25	12	13	15	16	13	19	10	270	Iwate

37	Kagawa	5	7	8		5		8	4	7	11	8	5	8	5	6	7	6	12	9	17	13	16	10	177	Kagawa
44	Oita	5	10	11		12		6	11	14	7	3	7	5	3	8	5	6	6	11	7	5	9	10	161	Oita
25	Shiga	2	4	5		1		6	8	7	6	10	4	8	9	3	9	12	5	9	4	7	8	10	137	Shiga
45	Miyazaki	4	6	10		5		7	12	13	5	7	7	9	5	9	7	13	8	8	4	11	9	9	168	Miyazaki
32	Shimane	7	4	4		3		8	13	9	4	10	5	8	4	5	11	4	4	12	8	11	14	9	157	Shimane
18	Fukui	5	6	14		6		3	8	8	7	3	10	2	9	3	6	7	7	10	8	3	7	8	140	Fukui
31	Tottori	4	8	6		7		4	9	2	6	8	5	4	6	13	5	6	7	3	4	4	10	5	126	Tottori
	total	699	717	760		738		942	882	962	965	907	900	888	914	937	912	948	991	1,092	1,090	1,200	1,307	1,728	20,479	total

Data source : <https://anzeninfo.mhlw.go.jp/user/anzen/tok/anst00.htm>

Return to https://www.jisha.or.jp/english/statistics/202211_23.html