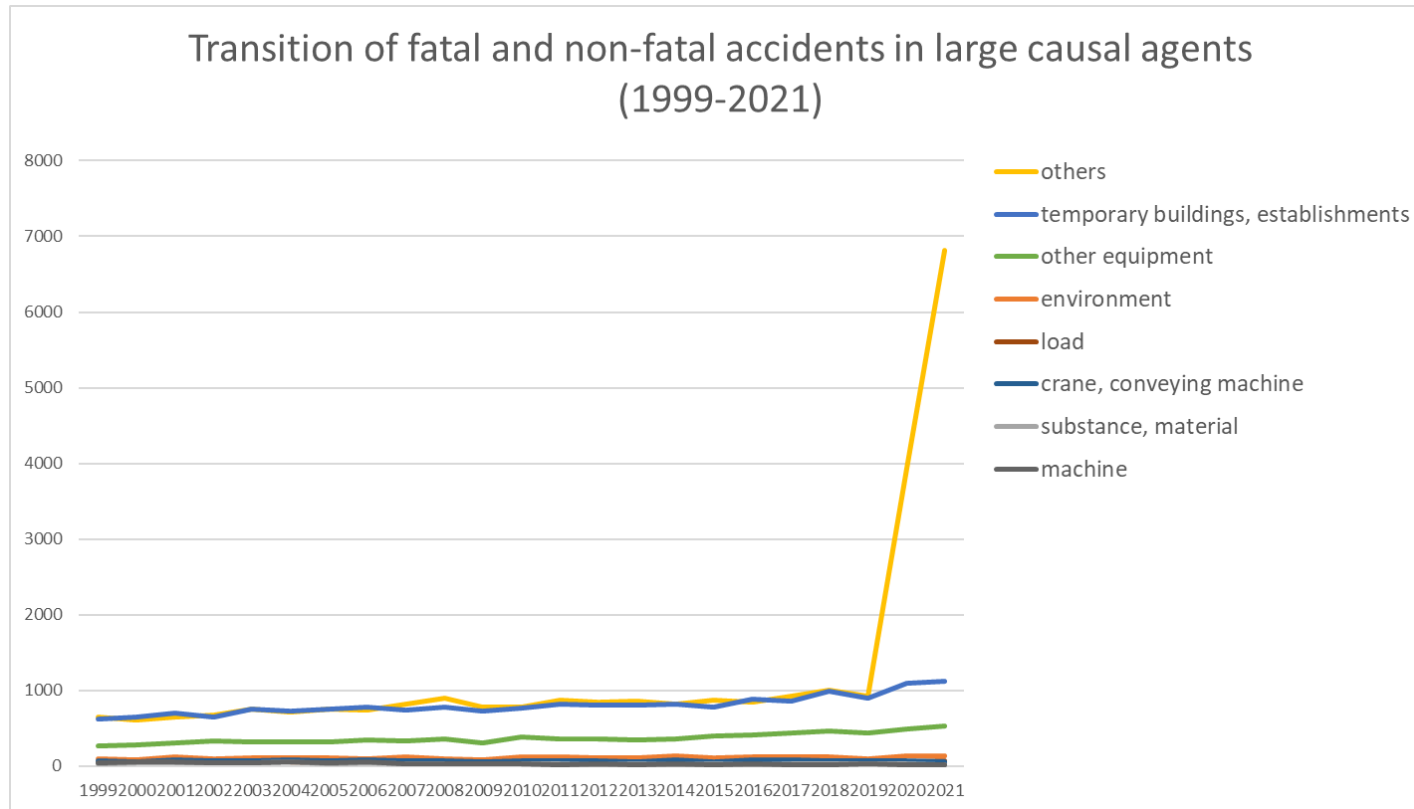
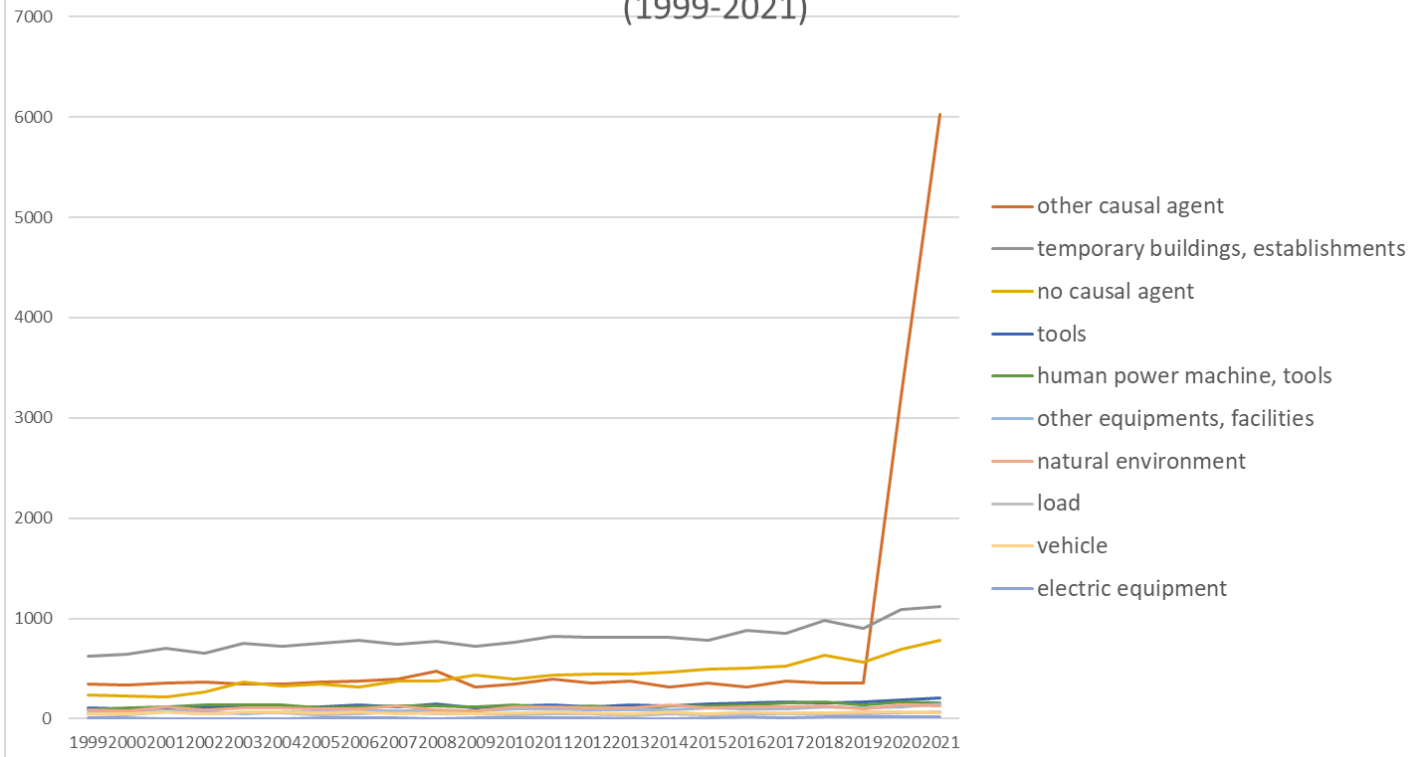


Transition of fatal and non-fatal accidents in each element like as causal agents, type of accidents, etc. in code no. 130101 hospital (1999-2021)



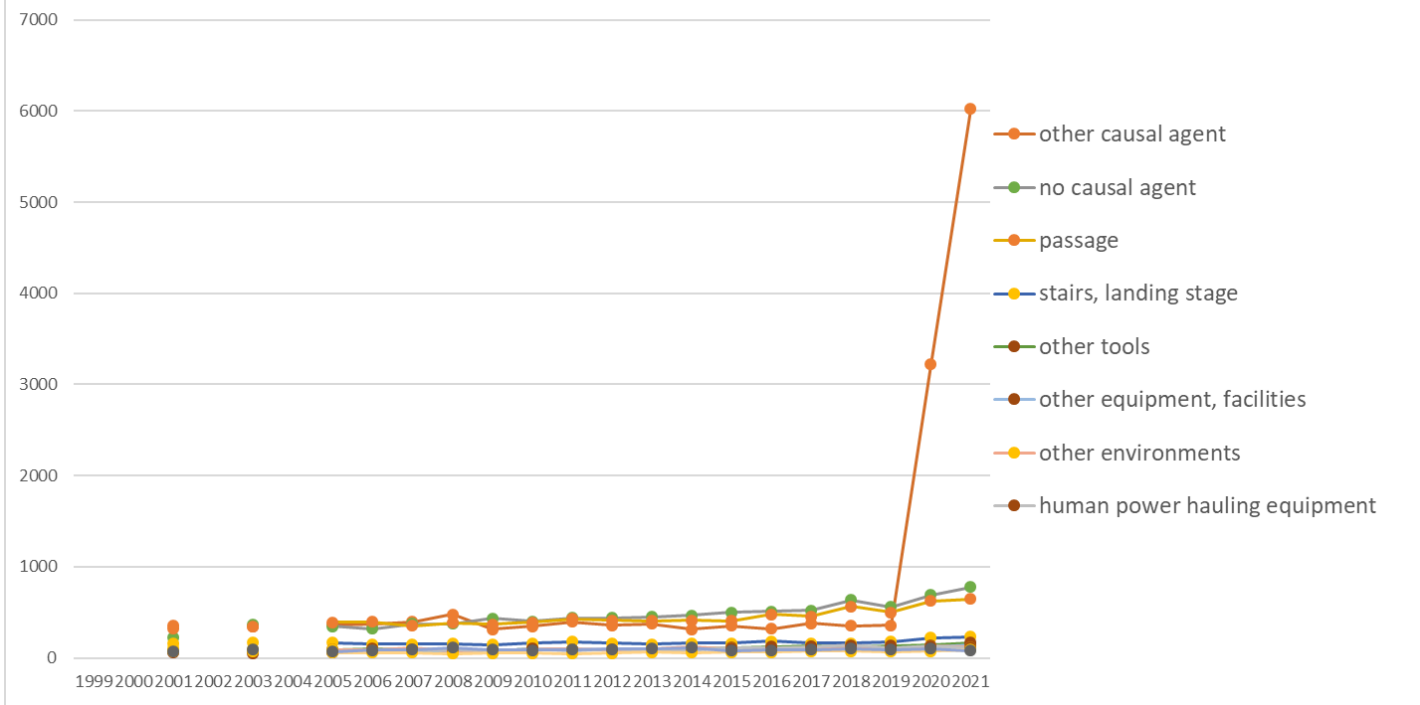
Transition of fatal and non-fatal accidents in large causal agents in code no. 130101 hospital (1999-2021)

Transition of fatal and non-fatal accidents in top 10 middle causal agents
(1999-2021)



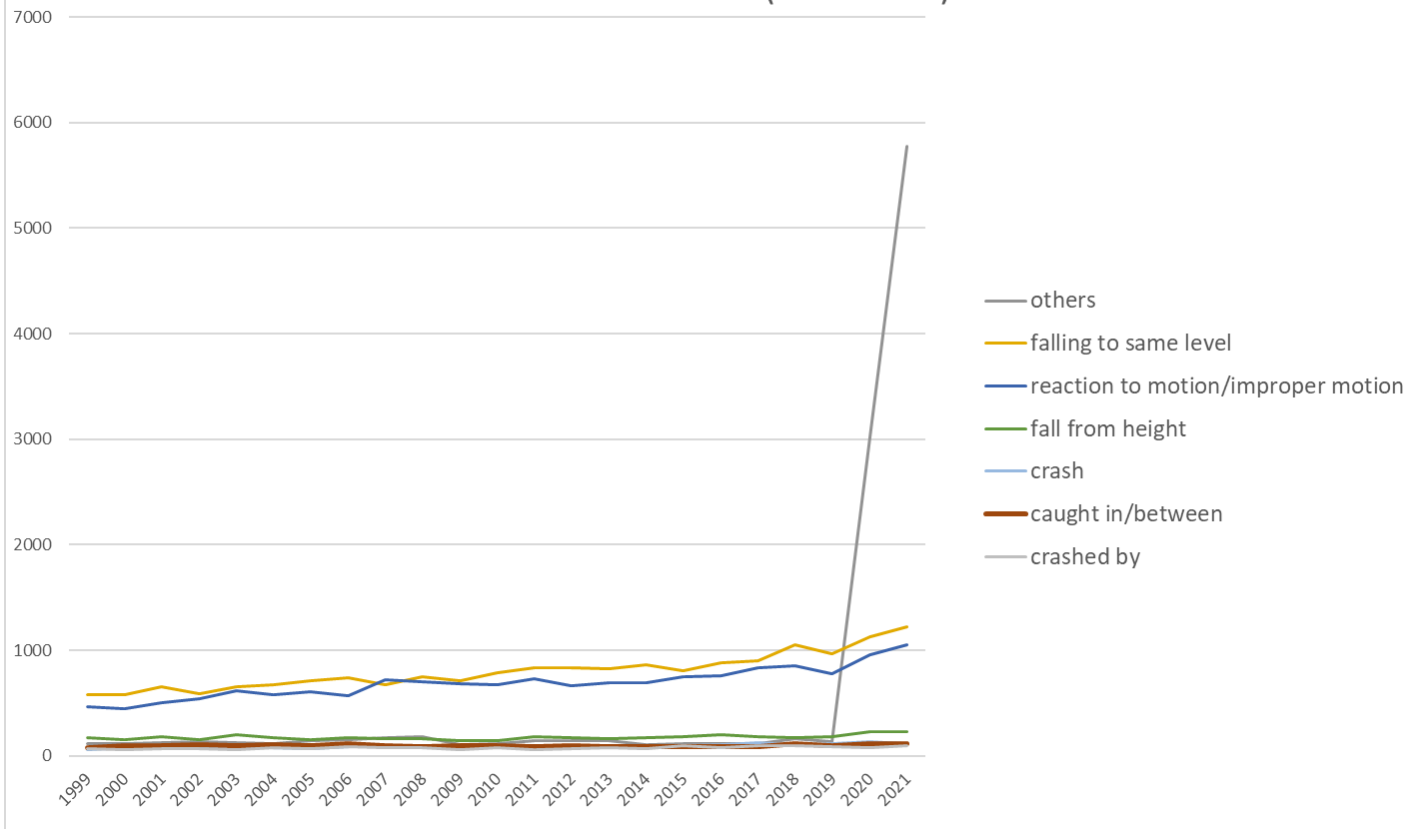
Transition of fatal and non-fatal accidents in middle causal agents in code no. 130101 hospital (1999-2021)

Transition of fatal and non-fatal accidents in top 10 small causal agents (1999-2021)



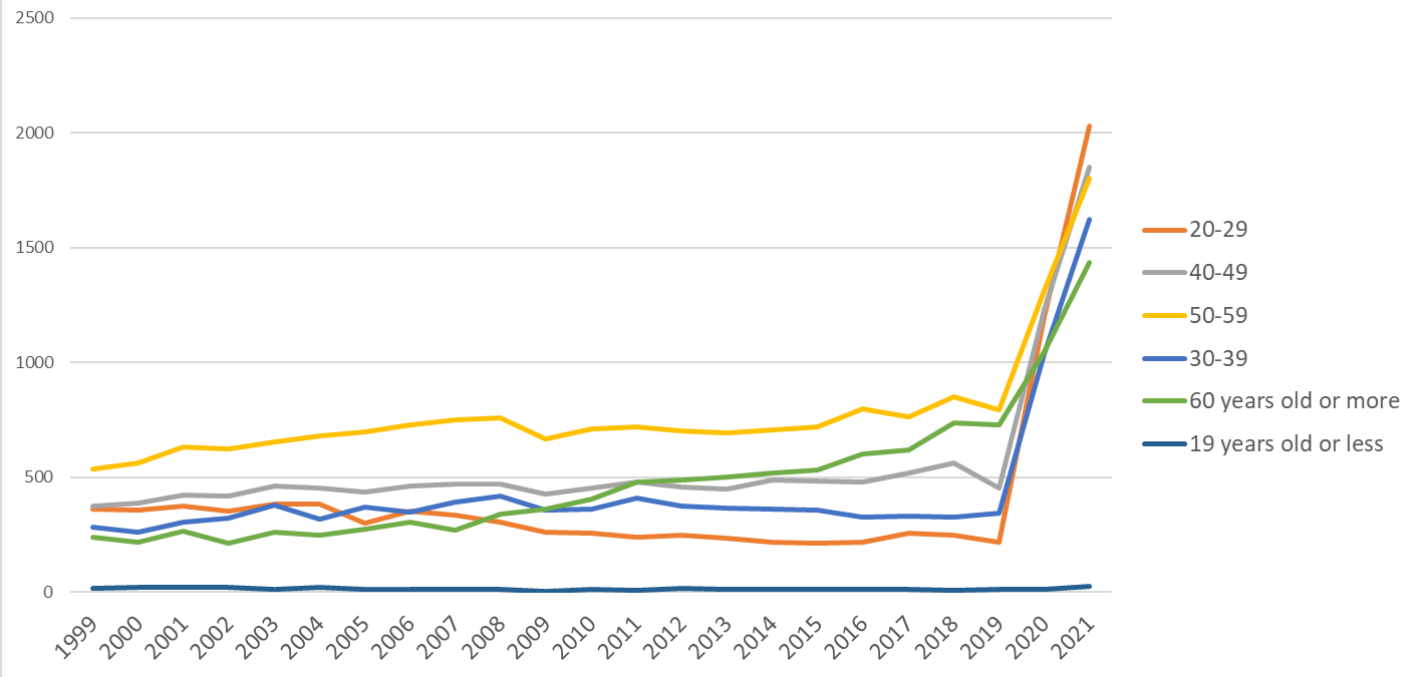
Transition of fatal and non-fatal accidents in small causal agents in code no. 130101 hospital (1999-2021)

Transition of fatal and non-fatal accidents in top 7 type of accidents
(1999-2021)



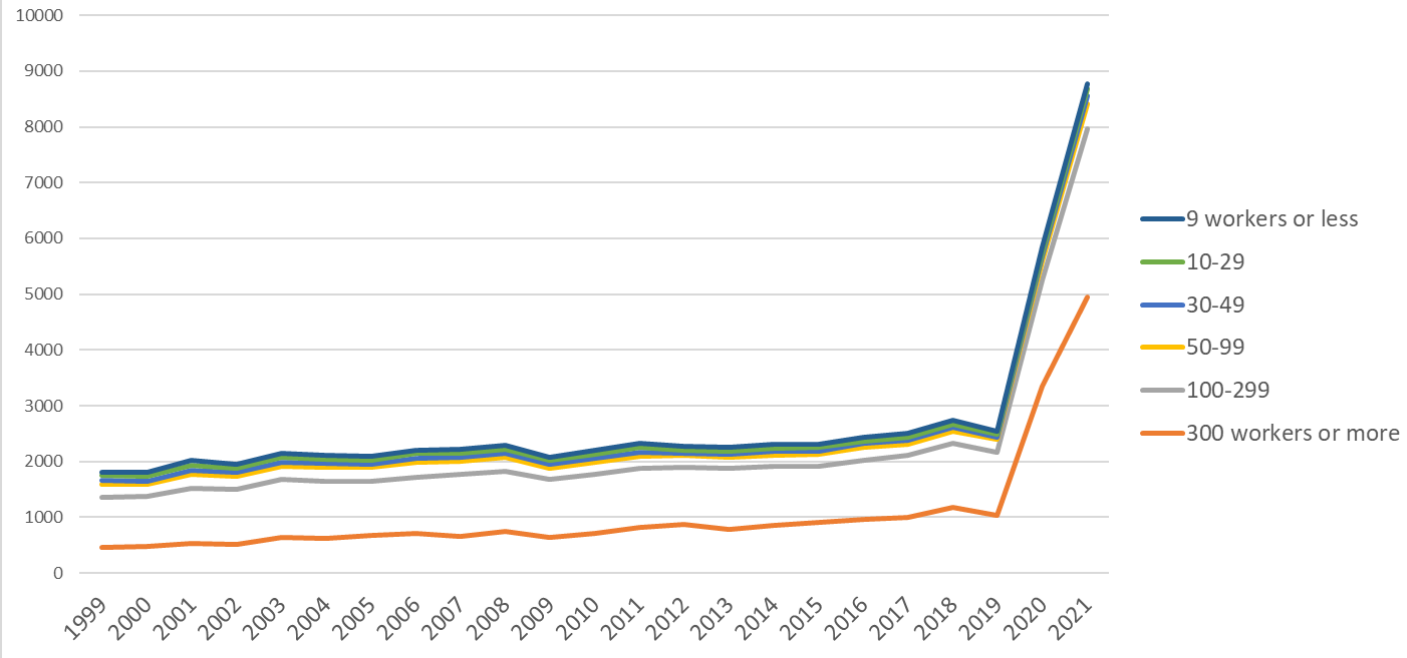
Transition of fatal and non-fatal accidents in type of accidents in code no. 130101 hospital (1999-2021)

Transition of fatal and non-fatal accidents in workers ages (1999-2021)

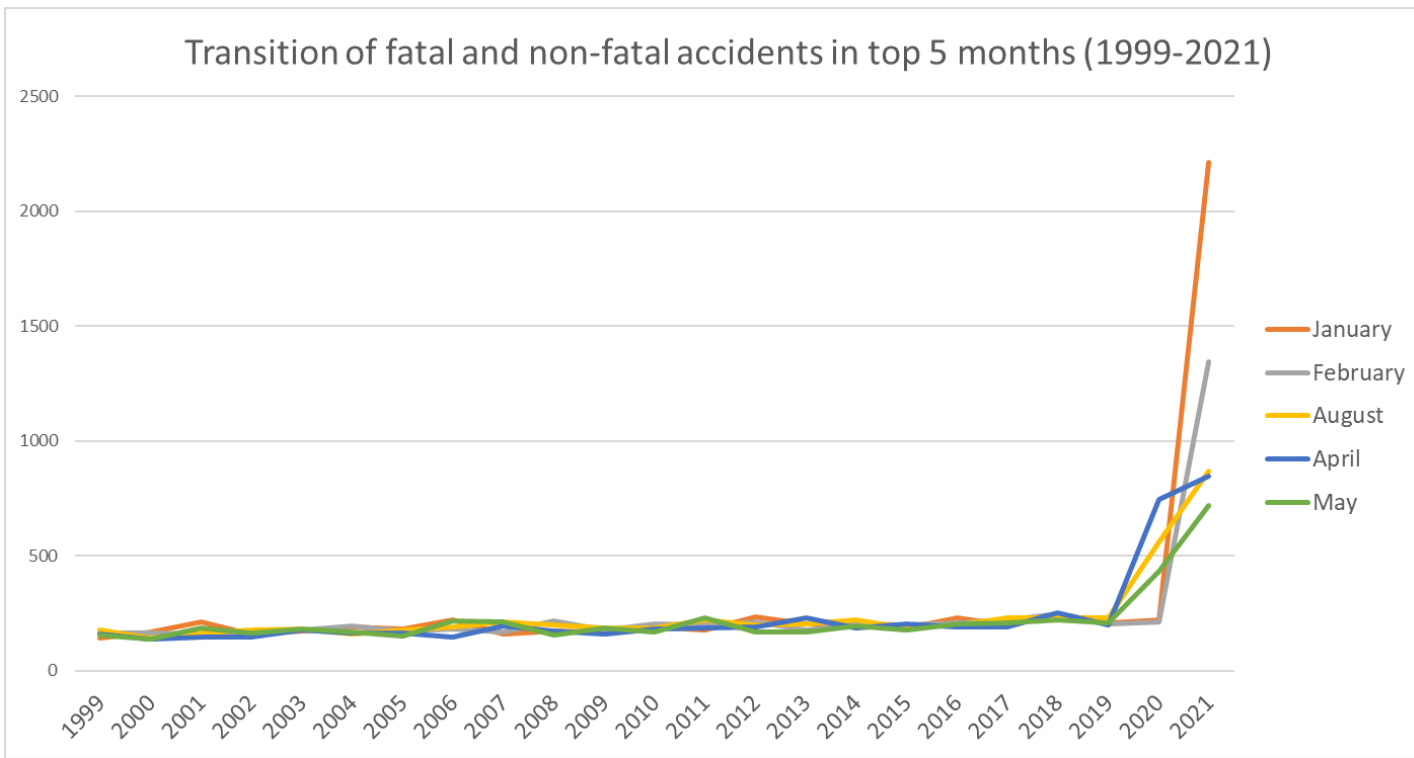


Transition of fatal and non-fatal accidents in workers ages in code no. 130101 hospital (1999-2021)

Transition of fatal and non-fatal accidents in workers scales (1999-2021)

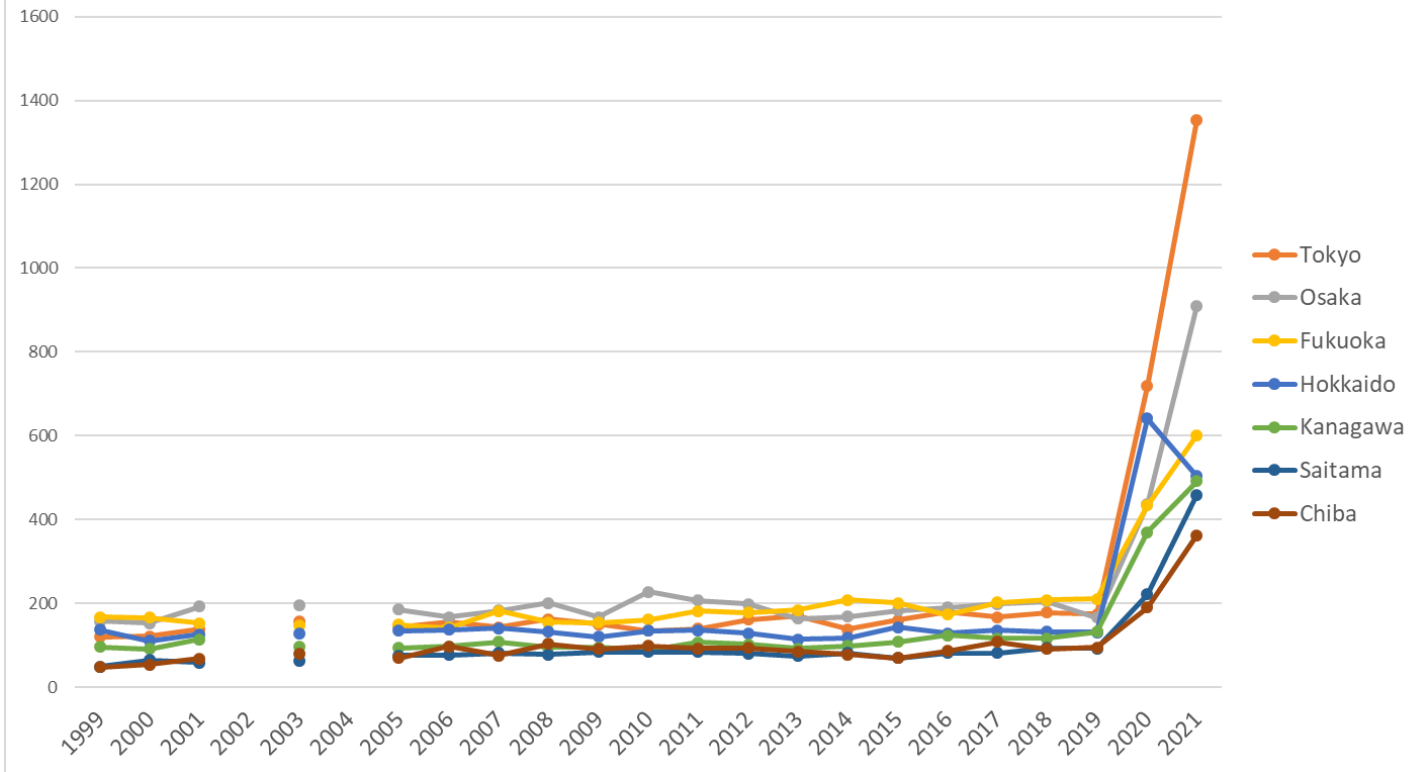


Transition of fatal and non-fatal accidents in workers scales in code no. 130101 hospital (1999-2021)



Transition of fatal and non-fatal accidents in months in code no. 130101 hospital (1999-2021)

Transition of fatal and non-fatal accidents in top 7 prefectures (1999-2021)



Transition of fatal and non-fatal accidents in prefectures in code no. 130101 hospital (1999-2021)

Transition of fatal and non-fatal accidents in large causal agents in code no. 130101 hospital (1999-2021)

code	Causal (L) agents	1999	2000	2001	2002	2003	2004	2005	2006	2007	2008	2009	2010	2011	2012	2013	2014	2015	2016	2017	2018	2019	2020	2021	total	Causal (L) agents
9	others	641	614	644	672	750	715	747	740	823	901	784	782	866	846	856	825	871	847	926	998	930	3,929	6,816	27,523	others
4	temporary buildings, establishments	624	642	706	651	754	724	750	781	739	774	727	761	822	809	808	812	783	878	854	983	903	1,090	1,122	18,497	temporary buildings, establishments
3	other equipment	271	284	308	330	320	320	315	349	333	359	312	378	353	355	343	359	404	410	442	465	440	491	531	8,472	other equipment
7	environment	89	78	122	92	105	108	103	101	127	89	82	117	119	112	109	135	108	121	115	124	99	140	130	2,525	environment

6	load	48	39	65	46	54	54	38	51	66	44	53	38	48	45	29	44	43	51	46	52	49	62	68	1,133	load
2	crane, conveying machine	64	55	81	67	74	78	70	88	67	71	60	70	74	63	59	79	57	78	77	69	73	75	62	1,611	crane, conveying machine
5	substance, material	35	41	36	37	44	51	28	48	34	30	27	24	32	21	28	20	26	19	25	25	25	34	21	711	substance, material
1	machine	40	55	56	48	46	53	36	50	33	32	28	24	19	31	18	34	21	26	19	17	24	21	15	746	machine
	total	1,812	1,808	2,018	1,943	2,147	2,103	2,087	2,208	2,222	2,300	2,073	2,194	2,333	2,282	2,250	2,308	2,313	2,430	2,504	2,733	2,543	5,842	8,765	61,218	total

Transition of fatal and non-fatal accidents in middle causal agents in code no. 130101 hospital (1999-2021)

code	Causal (M) agents	1999	2000	2001	2002	2003	2004	2005	2006	2007	2008	2009	2010	2011	2012	2013	2014	2015	2016	2017	2018	2019	2020	2021	total	Causal (M) agents
91	other causal agent	345	332	359	365	346	342	365	371	396	476	314	348	394	359	374	316	352	318	379	352	357	3,223	6,024	16,807	other causal agent
41	temporary buildings, establishments	624	642	706	651	754	724	750	781	739	774	727	761	822	809	808	812	783	878	854	983	903	1,090	1,122	18,497	temporary buildings, establishments
92	no causal agent	235	230	219	264	368	326	348	319	376	372	432	399	438	441	449	468	497	508	523	634	562	692	778	9,878	no causal agent
37	tools	107	96	109	109	128	112	123	136	120	144	109	128	138	120	142	132	148	157	172	161	170	185	206	3,152	tools
36	human power machine, tools	93	107	116	135	134	135	113	121	124	130	116	142	107	131	101	126	132	136	160	168	142	167	158	2,994	human power machine, tools
39	other equipments, facilities	63	70	76	74	50	66	71	79	78	76	76	99	97	86	92	91	113	97	95	114	105	122	144	2,034	other equipments, facilities
71	natural environment	89	78	122	92	105	108	103	101	127	89	82	117	119	112	109	135	108	121	115	124	99	140	130	2,525	natural environment

																										environment
61	load	48	39	65	46	54	54	38	51	66	44	53	38	48	45	29	44	43	51	46	52	49	62	68	1,133	load
23	vehicle	48	45	72	49	65	64	55	71	53	58	47	57	64	54	49	71	45	65	63	62	64	68	58	1,347	vehicle
35	electric equipment	6	5	3	3	2	3	5	7	7	4	6	5	7	9	2	3	7	15	10	16	16	16	20	177	electric equipment
52	materials	20	30	25	26	29	36	21	29	28	18	17	16	22	13	19	10	18	13	15	19	21	29	15	489	materials
99	unclassifiable	61	52	66	43	36	47	34	50	51	53	38	35	34	46	33	41	22	21	24	12	11	14	14	838	unclassifiable
16	general machine	37	47	48	46	43	46	30	37	32	29	26	23	14	29	17	34	19	24	18	14	23	19	12	667	general machine
51	hazards, harmful substances	15	11	11	11	15	15	7	19	6	12	10	8	10	8	9	10	8	6	10	6	4	5	6	222	hazards, harmful substances
13	woodworking machine	2	3	3			6	4	2	1	1	1		2		1		1	1		3	1		3	35	woodworking machine
22	conveying machine	11	7	4	12	8	10	11	8	11	5	5	9	4	8	5	5	5	7	10	3	7	4	2	161	conveying machine
21	crane	5	3	5	6	1	4	4	9	3	8	8	4	6	1	5	3	7	6	4	4	2	3	2	103	crane
34	kiln, caldron	1	2	2	7	3	1		4	1	3	4	3	2	3	4	3	2	1	2	6	6		2	62	kiln, caldron
31	pressure vessel	1	4	2	2	3	3	3	2	3	2	1	1	2	6	2	4	2	3	3		1	1	1	52	pressure vessel
14	construction machine			3																					17	construction machine
15	metal manufacturing machine	1	2	2		1		2							1	1									13	metal manufacturing machine
12	power transmission mechanism		3		2	1									1										10	power transmission mechanism

11	engine					1	1																		1		4	engine
33	welding equipment																										1	welding equipment
17	mobile silviculture machine																											mobile silviculture machine
32	chemical facilities																											chemical facilities
	total	1,812	1,808	2,018	1,943	2,147	2,103	2,087	2,208	2,222	2,300	2,073	2,194	2,333	2,282	2,250	2,308	2,313	2,430	2,504	2,733	2,543	5,842	8,765	61,218	total		

Transition of fatal and non-fatal accidents in small causal agents in code no. 130101 hospital (1999-2021)

code	Causal (S) agents	1999	2000	2001	2002	2003	2004	2005	2006	2007	2008	2009	2010	2011	2012	2013	2014	2015	2016	2017	2018	2019	2020	2021	total	Causal (S) agents	
911	other causal agent			359		346		365	371	396	476	314	348	394	359	374	316	352	318	379	352	357	3,223	6,024	15,423	other causal agent	
921	no causal agent			219		368		348	319	376	372	432	399	438	441	449	468	497	508	523	634	562	692	778	8,823	no causal agent	
417	passage			325		340		391	396	353	386	369	393	428	413	407	413	405	475	454	565	501	623	646	8,283	passage	
413	stairs, landing stage			158		172		166	153	149	155	145	160	175	161	150	164	164	183	163	161	179	220	233	3,211	stairs, landing stage	
379	other tools			75		85		88	103	90	104	80	94	93	87	88	97	108	124	129	120	133	138	167	2,003	other tools	
391	other equipment, facilities			76		50		71	79	78	76	76	99	97	86	92	91	113	97	95	114	105	122	144	1,761	other equipment, facilities	
719	other environments			102		88		89	87	110	80	69	102	96	92	96	119	103	106	104	109	86	126	119	1,883	other environments	
362	human power hauling equipment			61		71		65	80	89	86	80	104	76	94	78	93	106	113	123	141	114	131	115	1,820	human power hauling equipment	
419	other temporary buildings, establishments			69		68		59	57	60	49	55	53	45	53	61	59	63	65	73	74	69	72	92	1,196	other temporary buildings, establishments	
	working platform,																										working platform,

40	Fukuoka	167	166	153		148		150	142	182	156	154	161	182	178	185	209	201	174	202	208	211	434	601	4,364	Fukuoka
1	Hokkaido	138	111	127		128		135	138	141	132	121	135	136	129	115	118	143	129	136	133	131	641	504	3,621	Hokkaido
14	Kanagawa	96	92	115		97		94	98	108	95	95	89	107	102	93	99	109	124	117	117	133	370	492	2,842	Kanagawa
11	Saitama	50	65	59		63		76	77	82	78	84	84	84	81	75	82	70	82	82	94	93	222	459	2,142	Saitama
12	Chiba	48	54	69		81		70	98	76	104	92	99	93	94	86	78	70	87	108	92	95	191	363	2,148	Chiba
28	Hyogo	59	71	78		90		71	88	69	90	83	84	94	91	105	94	94	93	89	97	94	385	346	2,365	Hyogo
23	Aichi	70	62	57		70		75	80	58	54	66	73	84	69	76	88	91	80	85	114	70	185	304	1,911	Aichi
26	Kyoto	57	54	57		61		55	81	53	56	62	58	52	61	64	51	55	48	50	49	64	114	199	1,401	Kyoto
46	Kagoshima	57	40	49		55		51	51	61	67	45	68	65	50	54	63	60	88	83	102	88	124	195	1,516	Kagoshima
34	Hiroshima	49	55	53		48		49	58	63	70	50	72	76	70	66	60	76	82	73	77	85	156	170	1,558	Hiroshima
35	Yamaguchi	33	34	47		29		34	32	38	49	36	37	34	30	38	41	43	41	50	52	37	90	170	995	Yamaguchi
8	Ibaraki	33	25	26		36		30	40	28	43	31	19	35	31	38	39	43	48	48	40	46	72	159	910	Ibaraki
7	Fukushima	27	18	31		38		38	34	40	23	30	26	23	25	32	18	30	33	27	35	28	75	158	789	Fukushima
22	Shizuoka	37	34	49		43		54	55	45	32	51	47	49	40	33	57	54	55	60	64	61	68	157	1,145	Shizuoka
21	Gifu	13	23	26		13		25	22	18	19	24	14	18	17	25	25	24	16	13	22	27	51	148	583	Gifu
42	Nagasaki	40	28	25		43		64	66	53	100	54	53	33	58	51	50	63	69	69	70	74	103	144	1,310	Nagasaki
24	Mie	30	36	31		31		33	30	39	33	41	30	43	41	35	32	40	30	32	43	33	83	130	876	Mie
43	Kumamoto	56	57	64		64		55	66	67	58	60	75	62	55	48	61	48	60	66	84	85	90	120	1,401	Kumamoto
47	Okinawa	14	12	19		23		21	17	27	29	22	25	26	19	28	41	31	26	41	39	42	101	118	721	Okinawa
33	Okayama	26	28	29		41		33	34	37	39	41	50	38	44	41	37	47	32	46	66	62	82	116	969	Okayama
9	Tochigi	13	15	20		21		20	22	21	26	24	16	17	18	19	27	33	21	26	19	18	49	104	549	Tochigi
10	Gunma	24	28	33		23		31	39	39	35	39	25	39	45	33	39	31	33	45	45	42	73	99	840	Gunma
20	Nagano	15	20	23		22		40	18	37	37	22	29	30	33	31	36	28	38	34	35	22	34	91	675	Nagano
15	Niigata	19	25	39		47		47	36	57	43	39	38	50	50	35	46	27	46	39	57	51	64	90	945	Niigata
36	Tokushima	19	8	11		14		17	16	16	22	19	22	23	28	24	28	24	28	28	32	29	36	86	530	Tokushima

44	Oita	22	41	32		49		29	34	42	39	28	32	33	29	24	35	28	36	45	44	27	60	81	790	Oita
17	Ishikawa	14	19	17		27		22	14	23	16	19	15	12	14	25	10	17	16	24	16	16	38	80	454	Ishikawa
4	Miyagi	26	19	29		24		17	35	28	28	16	27	43	44	30	39	24	29	45	39	24	45	78	689	Miyagi
29	Nara	16	16	15		21		26	19	25	30	16	29	28	32	15	27	22	26	25	29	19	59	78	573	Nara
39	Kochi	41	40	43		44		35	53	44	35	41	34	47	38	45	39	37	51	31	53	56	72	68	947	Kochi
45	Miyazaki	32	34	28		36		20	25	43	34	30	25	27	32	62	36	31	30	31	42	39	59	65	761	Miyazaki
38	Ehime	26	19	26		28		33	28	35	35	25	36	35	35	38	34	22	46	34	34	36	46	60	711	Ehime
41	Saga	15	20	38		26		25	20	26	23	24	30	27	23	23	30	32	32	28	46	41	40	60	629	Saga
2	Aomori	25	17	19		11		13	20	14	15	16	15	30	30	22	27	17	32	27	28	24	18	57	477	Aomori
5	Akita	19	25	19		40		27	34	23	20	18	18	13	21	18	23	20	28	29	28	17	26	52	518	Akita
30	Wakayama	10	19	12		22		14	20	25	17	16	17	29	17	28	27	19	15	21	21	23	26	52	450	Wakayama
25	Shiga	6	9	9		7		12	21	9	18	18	12	20	25	28	16	17	18	16	28	18	46	50	403	Shiga
37	Kagawa	13	16	19		29		17	25	17	20	16	17	15	14	13	21	26	14	26	25	30	65	37	475	Kagawa
6	Yamagata	10	10	9		12		12	7	13	13	15	10	19	18	18	25	25	14	19	15	12	42	35	353	Yamagata
16	Toyama	12	9	16		17		19	31	12	24	17	14	24	17	28	17	20	33	20	26	17	43	28	444	Toyama
19	Yamanashi	12	12	10		19		16	17	19	23	15	15	24	17	12	20	25	18	20	17	28	34	27	400	Yamanashi
18	Fukui	7	12	16		13		13	13	9	15	15	15	15	19	12	15	9	20	10	37	19	22	26	332	Fukui
32	Shimane	17	18	18		17		13	8	17	10	9	14	17	12	14	17	12	18	14	18	9	17	22	311	Shimane
3	Iwate	13	12	16		17		16	14	9	22	7	14	21	13	26	16	26	11	12	10	17	26	18	336	Iwate
31	Tottori	7	5	5		5		9	8	7	9	9	13	14	12	4	7	6	8	11	8	9	11	4	171	Tottori
	total	1,812	1,808	2,018		2,147		2,087	2,208	2,222	2,300	2,073	2,194	2,333	2,282	2,250	2,308	2,313	2,430	2,504	2,733	2,543	5,842	8,765	57,172	total

Data source : <https://anzeninfo.mhlw.go.jp/user/anzen/tok/anst00.htm>

Return to https://www.jisha.or.jp/english/statistics/202211_23.html