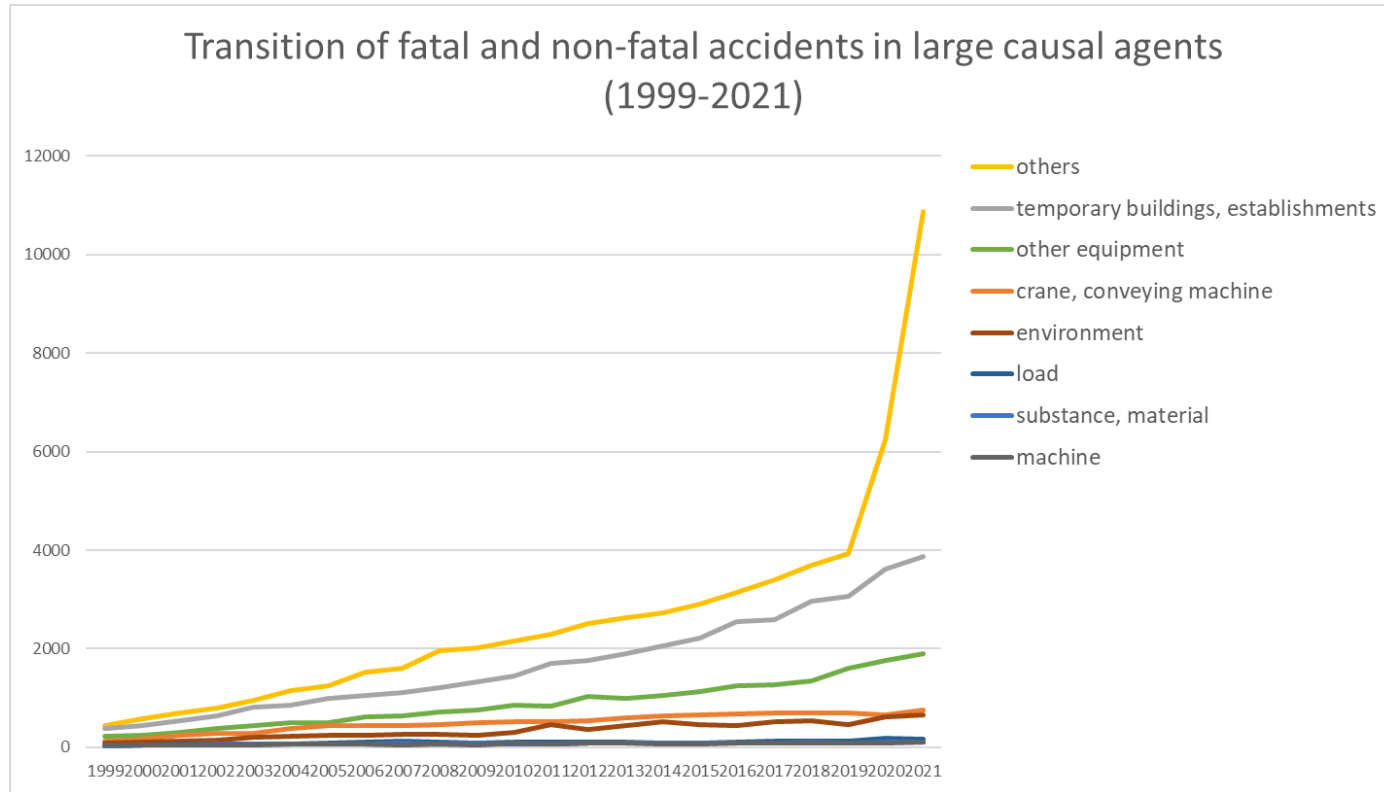
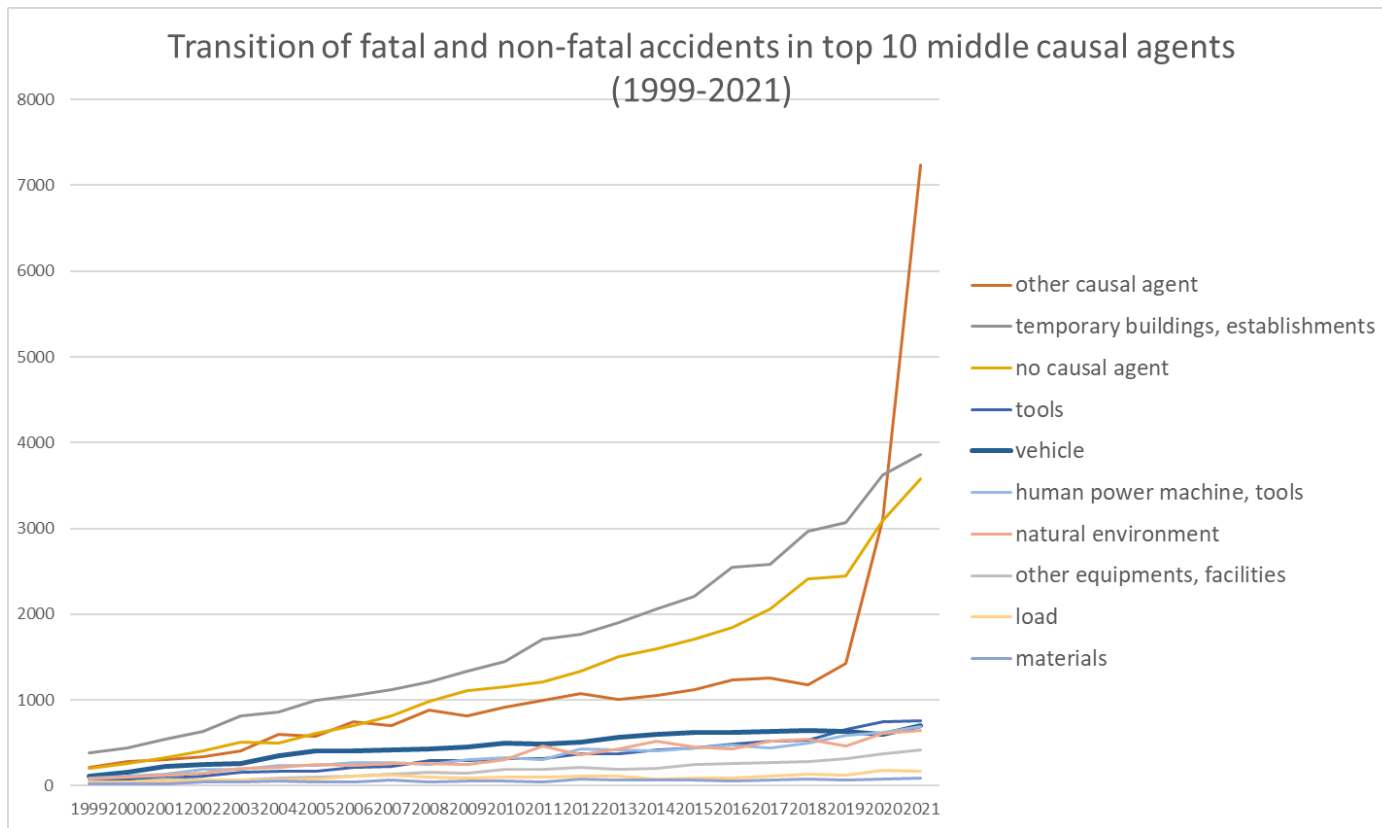


Transition of fatal and non-fatal accidents in each element like as causal agents, type of accidents, etc. in code no. 130201 social welfare facility (1999-2021)

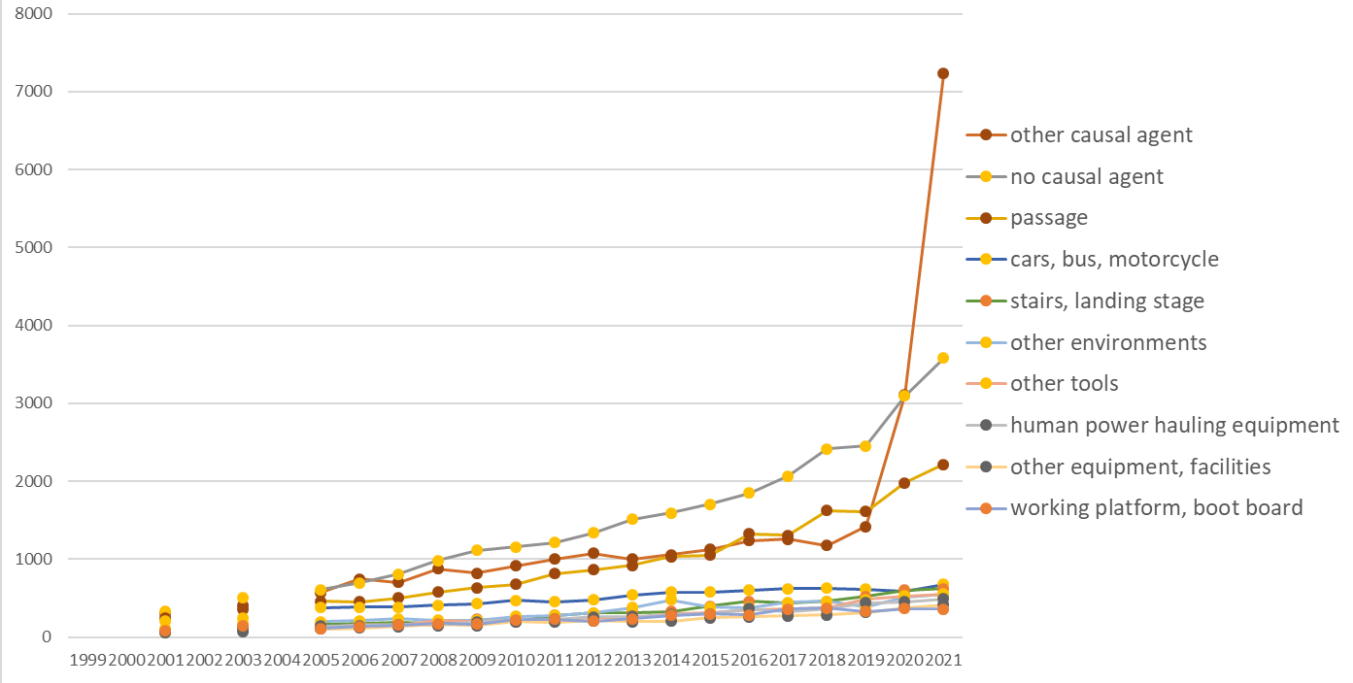


Transition of fatal and non-fatal accidents in large causal agents in code no. 130201 social welfare facility (1999-2021)



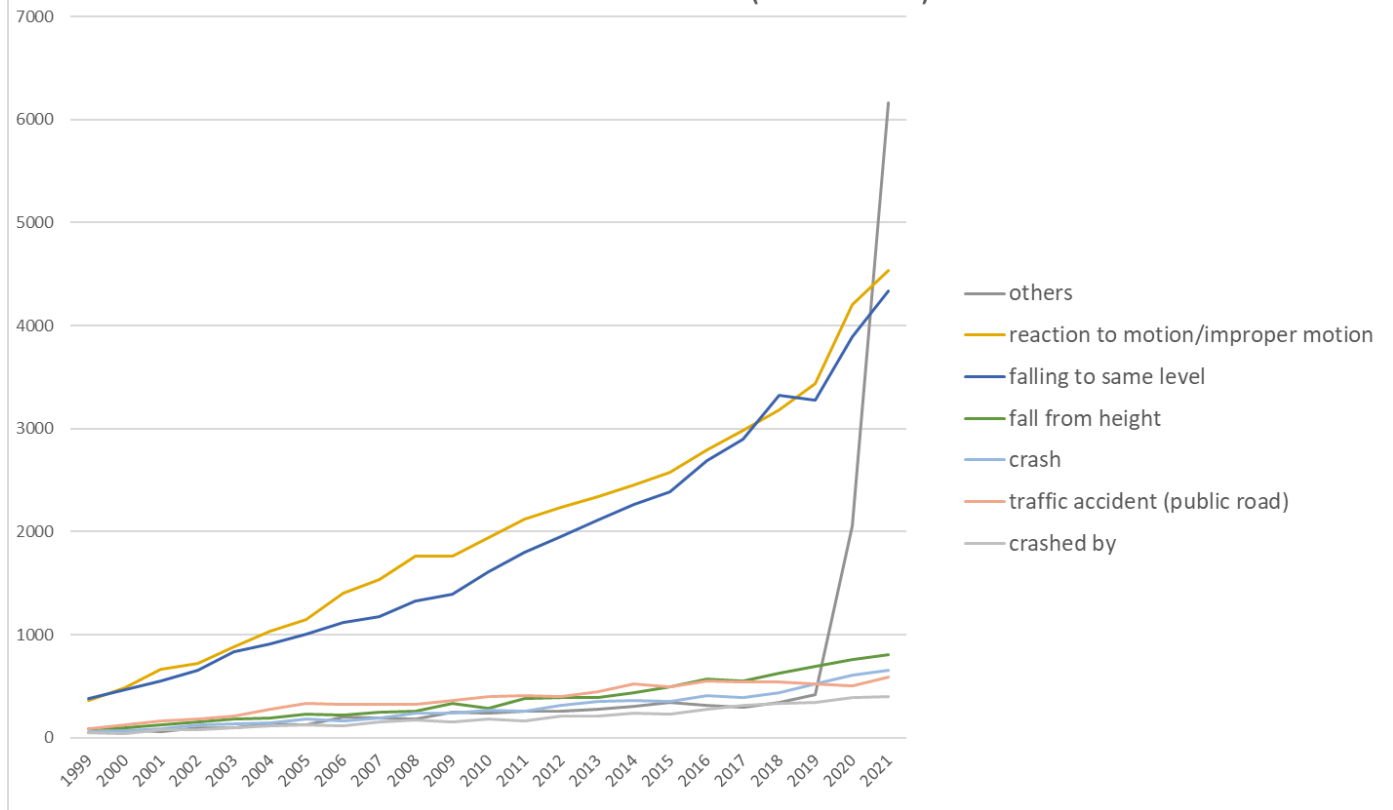
Transition of fatal and non-fatal accidents in middle causal agents in code no. 130201 social welfare facility (1999-2021)

Transition of fatal and non-fatal accidents in top 10 small causal agents (1999-2021)



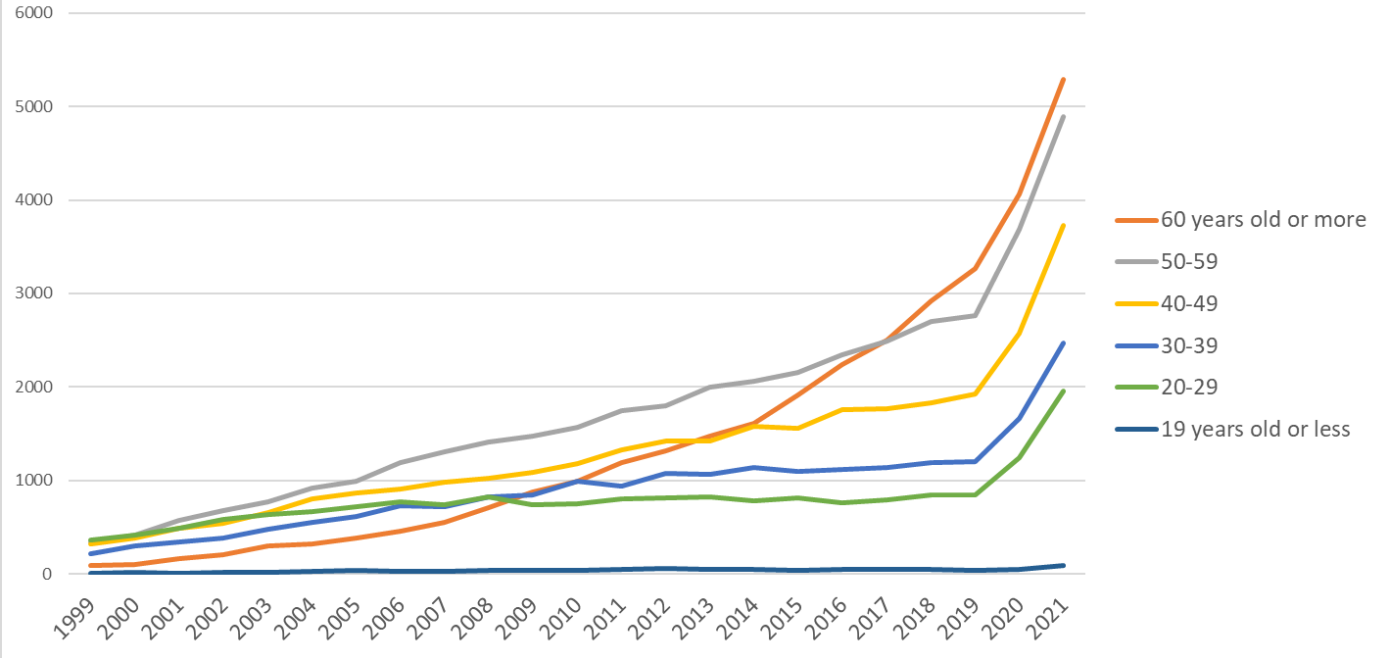
Transition of fatal and non-fatal accidents in small causal agents in code no. 130201 social welfare facility (1999-2021)

Transition of fatal and non-fatal accidents in top 7 type of accidents
(1999-2021)



Transition of fatal and non-fatal accidents in type of accidents in code no. 130201 social welfare facility (1999-2021)

Transition of fatal and non-fatal accidents in workers ages (1999-2021)



Transition of fatal and non-fatal accidents in workers ages in code no. 130201 social welfare facility (1999-2021)

215	cargo lifting appliance																									cargo lifting appliance
216	gondola																									gondola
217	lumberyard equipment, logging cableway																									lumberyard equipment, logging cableway
218	simple skyline yarding equipment																									simple skyline yarding equipment
226	straddle carrier																									straddle carrier
227	rough terrain hauler																									rough terrain hauler
332	arc welding equipment																									arc welding equipment
339	other welding equipment																									other welding equipment
515	radiation																									radiation
	total			2,069		2,869		3,621	4,091	4,338	4,829	5,065	5,533	6,054	6,480	6,831	7,224	7,597	8,281	8,738	9,545	10,045	13,267	18,421	134,898	total

Transition of fatal and non-fatal accidents in type of accidents in code no. 130201 social welfare facility (1999-2021)

code	Type of accidents	1999	2000	2001	2002	2003	2004	2005	2006	2007	2008	2009	2010	2011	2012	2013	2014	2015	2016	2017	2018	2019	2020	2021	total	Type of accidents
90	others	50	76	59	101	100	131	128	198	190	182	247	237	253	256	275	303	342	318	291	341	420	2,056	6,162	12,716	others
19	reaction to motion/improper motion	365	482	667	724	886	1,034	1,143	1,401	1,537	1,762	1,764	1,937	2,117	2,235	2,338	2,457	2,576	2,793	2,983	3,186	3,433	4,199	4,539	46,558	reaction to motion/improper motion
02	falling to same level	384	464	552	659	834	906	1,009	1,119	1,171	1,324	1,396	1,612	1,801	1,948	2,112	2,259	2,390	2,686	2,893	3,321	3,272	3,892	4,336	42,340	falling to same level
01	fall from height	89	98	125	153	186	192	226	220	247	255	332	283	384	392	391	433	491	565	555	625	692	755	802	8,491	fall from height
03	crash	59	69	88	124	137	148	178	163	195	235	234	266	260	318	355	360	356	408	386	438	520	612	657	6,566	crash

17	traffic accident (public road)	90	126	160	181	209	278	330	323	322	325	364	403	410	401	450	519	497	550	545	543	524	503	587	8,640	traffic accident (public road)
06	crashed by	51	44	74	79	100	111	122	119	150	169	152	179	162	213	212	240	233	272	310	337	341	388	398	4,456	crashed by
08	cut	99	114	136	150	167	191	175	198	188	188	197	204	161	272	243	207	234	205	230	230	256	241	296	4,582	cut
07	caught in/between	58	56	77	101	98	130	126	121	134	141	163	169	160	168	172	171	196	199	205	196	244	248	240	3,573	caught in/between
04	struck by flying or falling object	30	35	47	42	49	45	58	61	56	80	75	82	80	79	83	84	93	82	99	106	114	111	143	1,734	struck by flying or falling object
11	contact to high/low- temperature	41	39	39	55	50	69	57	83	76	77	69	79	87	96	76	82	82	94	118	101	107	145	136	1,858	contact to high/low- temperature
99	unclassifiable	13	16	22	22	20	27	32	29	36	46	34	32	39	56	68	68	48	56	69	70	65	48	58	974	unclassifiable
05	collapse	15	11	13	12	19	4	10	23	16	24	16	20	22	19	29	21	30	25	33	22	36	35	38	493	collapse
12	contact to harmful substance	8	12	3	4	5	15	9	17	11	9	13	20	10	17	9	14	11	10	10	20	15	14	10	266	contact to harmful substance
18	traffic accident (others)		4	4	2	3	2	5	7	2	4	2	4	5	2	7	4	5	9	5	1	4	8	9	98	traffic accident (others)
09	injury to the sole of the foot	2	2	2	1		5	5	4	2	3	2	3	2	5	4	1	4	5	3	3	1	7	5	71	injury to the sole of the foot
14	explosion		1	1		1	1	1	2	1			1		1	1				1		1	1	3	17	explosion
10	drown	2				1	1	2	1		1			99				5	1	1	2		1	1	118	drown
13	electric shock					1	1	2	2	2	2	3			1	3		2	1	1	2		1	1	25	electric shock
16	fire				1	3		2		2	1	2	2	2	1	3	1	1	2						23	fire
15	burst							1			1							1			1		2		6	burst
	total	1,356	1,649	2,069	2,411	2,869	3,291	3,621	4,091	4,338	4,829	5,065	5,533	6,054	6,480	6,831	7,224	7,597	8,281	8,738	9,545	10,045	13,267	18,421	143,605	total

Transition of fatal and non-fatal accidents in workers ages in code no. 130201 social welfare facility (1999-2021)

code	Age	1999	2000	2001	2002	2003	2004	2005	2006	2007	2008	2009	2010	2011	2012	2013	2014	2015	2016	2017	2018	2019	2020	2021	total	Age
6	60 years old or more	96	106	164	206	301	322	380	459	552	714	878	995	1,190	1,317	1,471	1,611	1,911	2,241	2,498	2,922	3,262	4,060	5,291	32,947	60 years old or more
5	50-59	345	421	569	675	768	923	996	1,192	1,304	1,407	1,472	1,571	1,744	1,801	1,999	2,062	2,161	2,348	2,486	2,702	2,765	3,682	4,888	40,281	50-59
4	40-49	326	388	490	545	659	805	867	908	984	1,023	1,088	1,181	1,332	1,419	1,420	1,584	1,562	1,762	1,770	1,829	1,929	2,575	3,728	30,174	40-49
3	30-39	216	300	348	386	482	550	617	734	725	822	848	990	939	1,074	1,066	1,137	1,100	1,120	1,137	1,193	1,203	1,661	2,471	21,119	30-39
2	20-29	365	420	488	585	641	667	722	772	742	828	743	754	801	810	825	780	819	759	798	849	850	1,243	1,955	18,216	20-29
1	19 years old or less	8	14	10	14	18	24	39	26	31	35	36	42	48	59	50	50	44	51	49	50	36	46	88	868	19 years old or less
	total	1,356	1,649	2,069	2,411	2,869	3,291	3,621	4,091	4,338	4,829	5,065	5,533	6,054	6,480	6,831	7,224	7,597	8,281	8,738	9,545	10,045	13,267	18,421	143,605	total

Transition of fatal and non-fatal accidents in workers scales in code no. 130201 social welfare facility (1999-2021)

code	Workers scale	1999	2000	2001	2002	2003	2004	2005	2006	2007	2008	2009	2010	2011	2012	2013	2014	2015	2016	2017	2018	2019	2020	2021	total	Workers scale
2	10-29	302	346	423	477	538	674	757	903	967	1,039	1,166	1,318	1,439	1,543	1,764	1,889	2,064	2,313	2,500	2,700	2,874	3,888	5,539	37,423	10-29
4	50-99	379	466	626	717	853	967	1,002	1,117	1,198	1,369	1,329	1,449	1,500	1,654	1,677	1,696	1,849	1,924	1,969	2,184	2,367	3,098	4,157	35,547	50-99
3	30-49	302	357	359	424	532	579	586	679	768	823	914	1,014	1,195	1,275	1,291	1,425	1,434	1,609	1,779	1,978	1,977	2,686	3,854	27,840	30-49
5	100-299	197	273	378	488	571	689	765	861	869	974	1,057	1,153	1,226	1,288	1,355	1,410	1,384	1,515	1,498	1,585	1,690	2,155	3,059	26,440	100-299
1	9 workers or less	112	136	164	183	242	198	297	334	323	397	381	402	436	491	488	584	644	691	762	803	859	1,063	1,444	11,434	9 workers or less
6	300 workers or more	64	71	119	122	133	184	214	197	213	227	218	197	258	229	256	220	222	229	230	295	278	377	368	4,921	300 workers or more
	total	1,356	1,649	2,069	2,411	2,869	3,291	3,621	4,091	4,338	4,829	5,065	5,533	6,054	6,480	6,831	7,224	7,597	8,281	8,738	9,545	10,045	13,267	18,421	143,605	total

Transition of fatal and non-fatal accidents in months in code no. 130201 social welfare facility (1999-2021)

code	Month	1999	2000	2001	2002	2003	2004	2005	2006	2007	2008	2009	2010	2011	2012	2013	2014	2015	2016	2017	2018	2019	2020	2021	total	Month
1	January	122	122	159	206	246	277	329	378	342	424	441	504	566	563	648	597	652	774	832	967	830	907	2,650	13,536	January

4	April	100	123	153	178	195	250	293	303	341	353	397	448	448	493	549	580	641	657	701	718	836	1,047	1,944	11,748	April
5	May	117	135	197	211	274	294	332	349	367	435	446	456	452	588	543	621	647	702	709	825	844	1,021	1,935	12,500	May
8	August	118	159	191	211	259	299	314	356	416	406	447	477	543	606	604	605	641	750	734	829	929	1,166	1,799	12,859	August
2	February	104	127	139	174	195	238	285	344	360	463	377	492	499	587	554	662	604	694	759	743	803	839	1,606	11,648	February
3	March	109	142	147	179	204	252	296	314	343	340	389	464	595	507	570	549	595	639	690	744	788	953	1,398	11,207	March
7	July	125	149	190	202	276	293	303	394	400	453	503	487	493	585	598	682	741	750	758	859	946	1,167	1,355	12,709	July
6	June	127	132	182	242	274	294	319	344	373	455	515	472	531	521	608	626	646	701	720	832	856	1,127	1,313	12,210	June
9	September	116	136	202	210	230	289	272	343	373	413	416	425	503	546	538	581	627	661	684	810	805	1,131	1,220	11,531	September
10	October	114	135	191	203	244	284	292	360	359	406	397	456	511	548	581	586	630	688	753	821	912	1,109	1,151	11,731	October
12	December	93	145	169	200	262	266	255	303	359	352	344	413	458	460	549	573	573	607	701	639	713	1,663	1,028	11,125	December
11	November	111	144	149	195	210	255	331	303	305	329	393	439	455	476	489	562	600	658	697	758	783	1,137	1,022	10,801	November
	total	1,356	1,649	2,069	2,411	2,869	3,291	3,621	4,091	4,338	4,829	5,065	5,533	6,054	6,480	6,831	7,224	7,597	8,281	8,738	9,545	10,045	13,267	18,421	143,605	total

Transition of fatal and non-fatal accidents in prefectures in code no. 130201 social welfare facility (1999-2021)

code	Prefecture	1999	2000	2001	2002	2003	2004	2005	2006	2007	2008	2009	2010	2011	2012	2013	2014	2015	2016	2017	2018	2019	2020	2021	total	Prefecture
13	Tokyo	108	129	172		275		381	365	401	447	498	521	560	595	546	644	670	764	766	872	941	1,187	1,900	12,742	Tokyo
27	Osaka	100	130	174		238		294	316	326	398	363	435	424	471	504	484	528	600	671	682	749	948	1,768	10,603	Osaka
14	Kanagawa	92	107	126		191		263	291	328	344	411	437	485	485	558	545	559	612	621	634	723	1,005	1,266	10,083	Kanagawa
12	Chiba	37	40	59		104		135	165	151	236	232	268	241	324	327	328	340	327	367	415	460	681	1,001	6,238	Chiba
1	Hokkaido	89	89	83		123		138	196	203	207	243	245	289	285	316	353	368	396	425	448	461	771	994	6,722	Hokkaido
11	Saitama	39	39	54		73		111	135	144	172	179	227	194	211	264	291	323	373	376	435	418	663	930	5,651	Saitama
28	Hyogo	59	67	100		131		172	166	196	224	199	226	267	275	270	297	349	349	375	377	470	585	886	6,040	Hyogo
40	Fukuoka	64	84	109		118		159	176	174	198	203	196	220	252	255	281	373	386	435	450	457	593	833	6,016	Fukuoka
23	Aichi	46	54	65		92		112	130	157	161	175	180	193	231	275	292	302	334	350	401	432	601	782	5,365	Aichi
26	Kyoto	54	59	87		96		147	151	138	140	170	143	180	195	238	179	225	216	211	214	232	317	414	3,806	Kyoto
22	Shizuoka	30	29	46		78		114	145	120	154	149	162	173	180	214	214	216	240	251	280	292	331	412	3,830	Shizuoka

35	Yamaguchi	20	22	21		45		39	39	45	51	51	33	61	76	76	51	81	102	92	95	112	106	150	1,368	Yamaguchi
25	Shiga	12	11	27		36		46	63	56	98	66	67	86	94	90	96	75	90	75	87	100	163	146	1,584	Shiga
37	Kagawa	22	22	18		26		30	35	42	41	36	32	40	45	63	50	65	60	54	67	71	98	135	1,052	Kagawa
17	Ishikawa	18	16	33		25		27	37	45	43	46	51	49	66	68	62	66	71	73	93	85	100	118	1,192	Ishikawa
32	Shimane	19	27	29		41		32	60	45	44	63	51	57	72	68	68	76	88	88	79	80	89	117	1,293	Shimane
18	Fukui	11	14	20		21		26	38	37	29	35	38	59	47	31	54	55	74	61	84	77	66	100	977	Fukui
16	Toyama	4	12	14		29		22	28	32	34	46	45	54	51	48	65	52	50	71	72	72	96	91	988	Toyama
36	Tokushima	12	19	17		16		21	27	23	32	29	42	27	35	35	36	52	47	52	64	63	91	87	827	Tokushima
39	Kochi	30	34	31		46		38	36	48	32	53	73	55	69	47	59	46	48	51	69	58	82	82	1,087	Kochi
31	Tottori	11	5	10		15		13	23	26	28	15	15	29	28	25	37	37	35	43	48	36	75	81	635	Tottori
19	Yamanashi	6	15	13		17		18	25	26	32	31	32	37	47	52	46	49	46	51	65	61	81	77	827	Yamanashi
	total	1,356	1,649	2,069		2,869		3,621	4,091	4,338	4,829	5,065	5,533	6,054	6,480	6,831	7,224	7,597	8,281	8,738	9,545	10,045	13,267	18,421	137,903	total

Data source : <https://anzeninfo.mhlw.go.jp/user/anzen/tok/anst00.htm>

Return to https://www.jisha.or.jp/english/statistics/202211_23.html