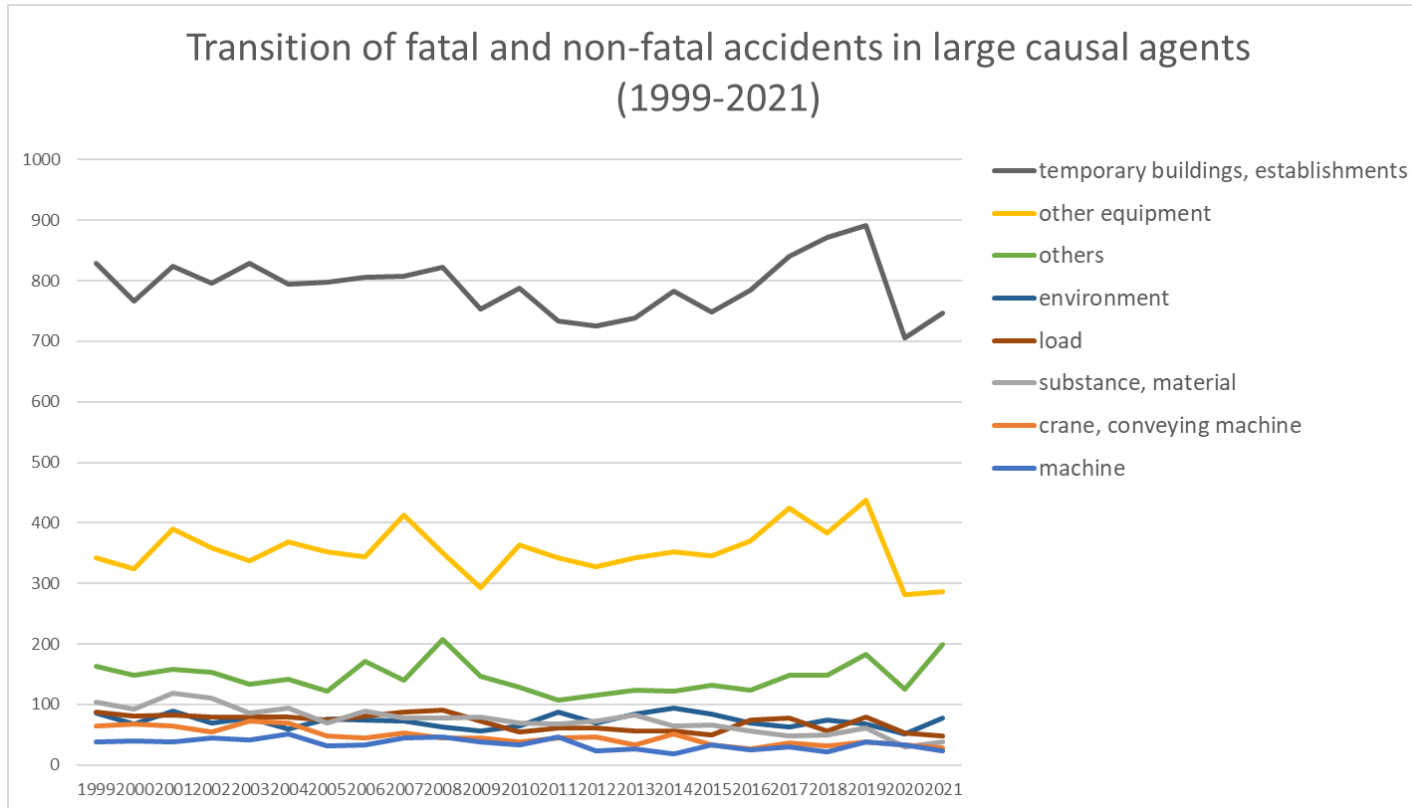
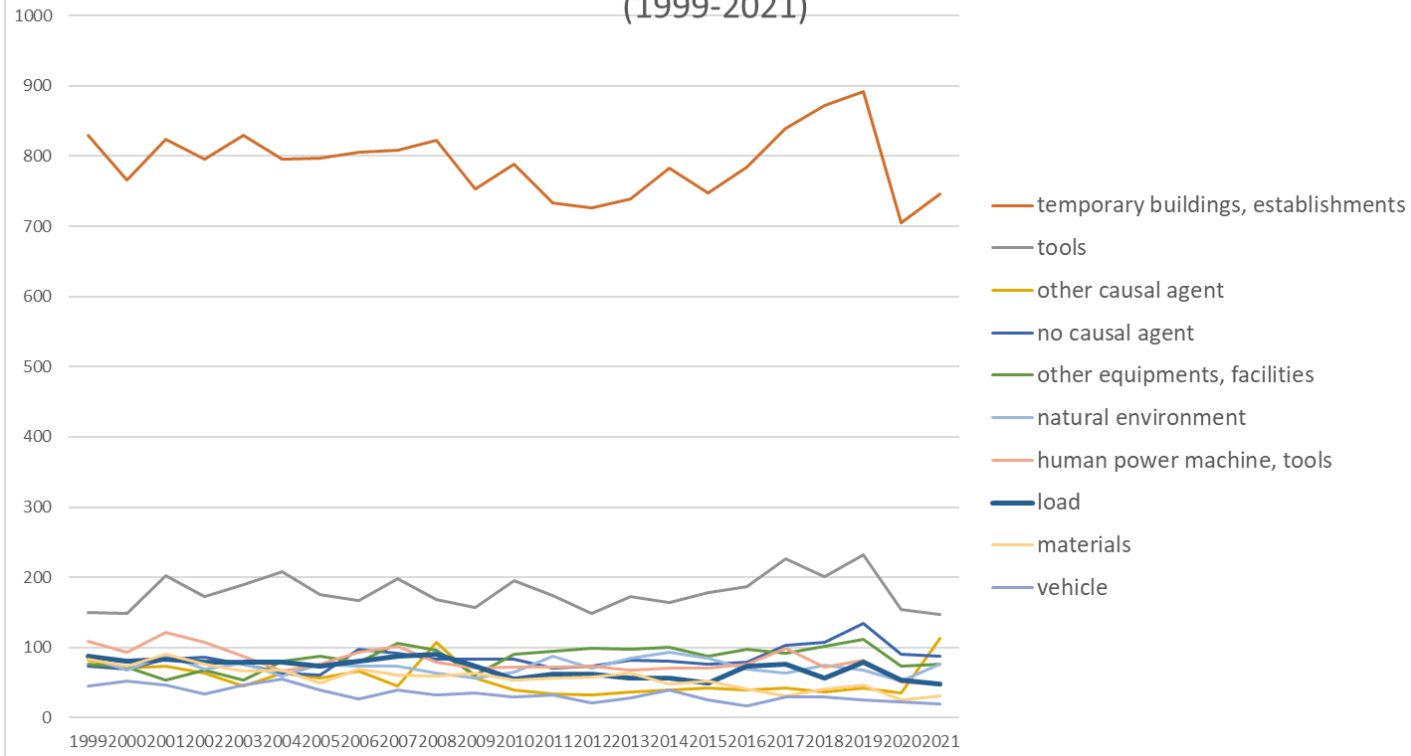


Transition of fatal and non-fatal accidents in each element like as causal agents, type of accidents, etc. in code no. 140101 hotel (1999-2021)



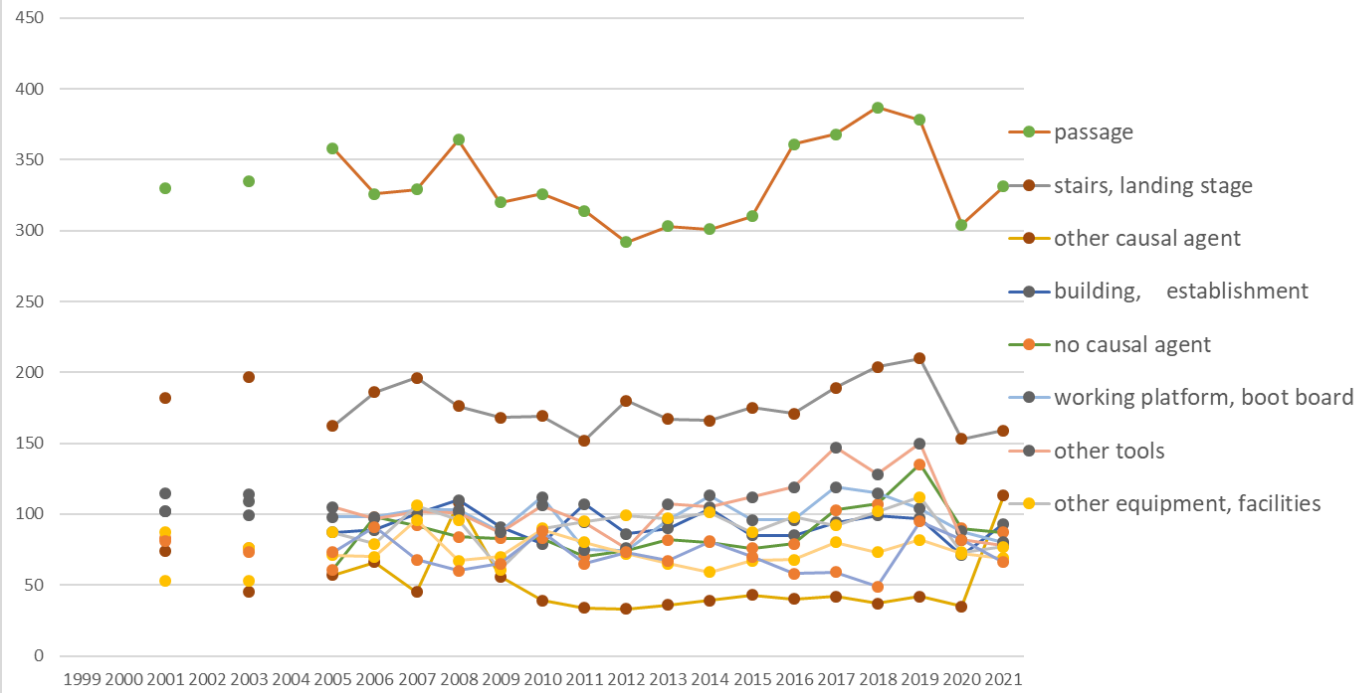
Transition of fatal and non-fatal accidents in large causal agents in code no. 140101 hotel (1999-2021)

Transition of fatal and non-fatal accidents in top 10 middle causal agents
(1999-2021)



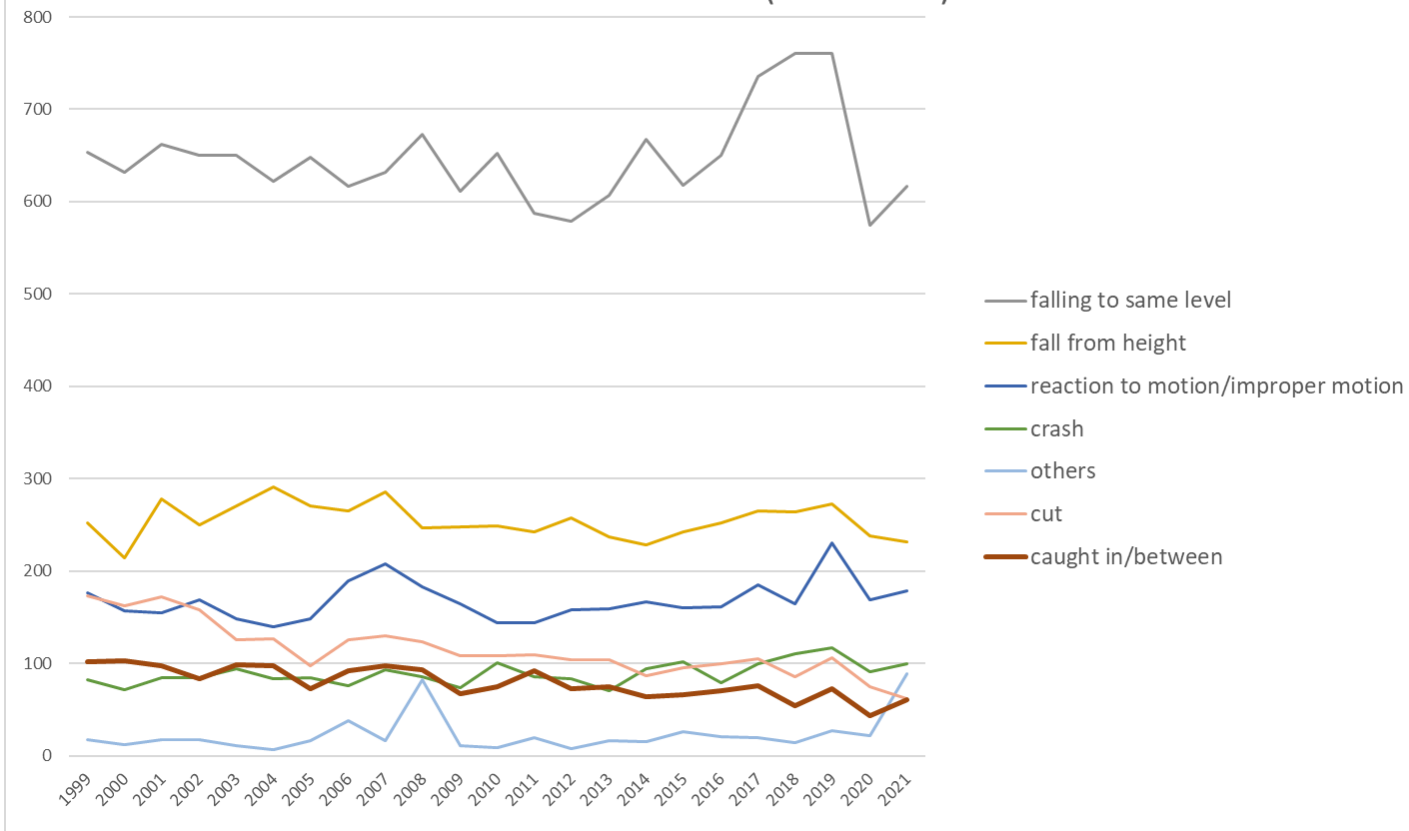
Transition of fatal and non-fatal accidents in middle causal agents in code no. 140101 hotel (1999-2021)

Transition of fatal and non-fatal accidents in top 10 small causal agents
(1999-2021)



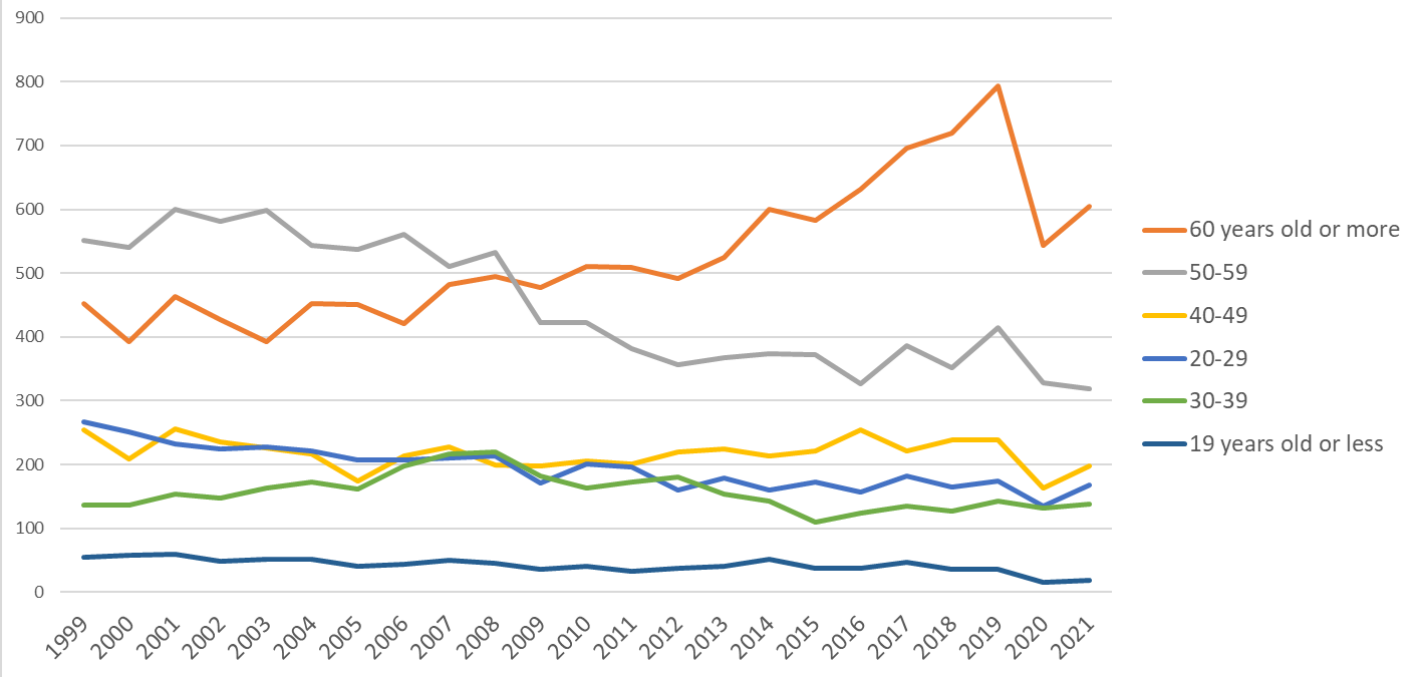
Transition of fatal and non-fatal accidents in small causal agents in code no. 140101 hotel (1999-2021)

Transition of fatal and non-fatal accidents in top 7 type of accidents
(1999-2021)



Transition of fatal and non-fatal accidents in type of accidents in code no. 140101 hotel (1999-2021)

Transition of fatal and non-fatal accidents in workers ages (1999-2021)



Transition of fatal and non-fatal accidents in workers ages in code no. 140101 hotel (1999-2021)

16	fire	2	2	4	1	1	2	2	2		1	2		3	1	4		2	6	2						37	fire
14	explosion	1	3	2	2	5	2		2	3	1	2			1	1	1				1					27	explosion
13	electric shock	3		1	1	1	2	1		1	2			1				3		1	1					18	electric shock
10	drown	1	2						1				1	5				1			1	1				13	drown
15	burst																	1								1	burst
	total	1,716	1,587	1,765	1,665	1,658	1,659	1,570	1,643	1,698	1,704	1,485	1,541	1,492	1,444	1,489	1,542	1,495	1,530	1,668	1,638	1,798	1,315	1,446	36,548	total	

Transition of fatal and non-fatal accidents in workers ages in code no. 140101 hotel (1999-2021)

code	Age	1999	2000	2001	2002	2003	2004	2005	2006	2007	2008	2009	2010	2011	2012	2013	2014	2015	2016	2017	2018	2019	2020	2021	total	Age
6	60 years old or more	452	393	463	427	392	453	450	421	482	495	477	510	509	491	524	600	583	631	696	720	793	543	604	12,109	60 years old or more
5	50-59	552	541	600	581	598	544	537	560	511	532	422	422	381	356	367	374	372	327	387	352	414	328	319	10,377	50-59
4	40-49	254	208	256	235	226	216	174	214	228	199	197	205	200	219	225	214	221	255	222	239	239	163	198	5,007	40-49
2	20-29	267	251	233	225	228	222	207	207	210	214	171	200	196	160	179	160	172	157	182	164	174	134	168	4,481	20-29
3	30-39	136	137	154	148	163	173	162	198	217	219	182	163	173	181	153	142	110	123	134	127	143	132	138	3,608	30-39
1	19 years old or less	55	57	59	49	51	51	40	43	50	45	36	41	33	37	41	52	37	37	47	36	35	15	19	966	19 years old or less
	total	1,716	1,587	1,765	1,665	1,658	1,659	1,570	1,643	1,698	1,704	1,485	1,541	1,492	1,444	1,489	1,542	1,495	1,530	1,668	1,638	1,798	1,315	1,446	36,548	total

Transition of fatal and non-fatal accidents in workers scales in code no. 140101 hotel (1999-2021)

code	Workers scale	1999	2000	2001	2002	2003	2004	2005	2006	2007	2008	2009	2010	2011	2012	2013	2014	2015	2016	2017	2018	2019	2020	2021	total	Workers scale
2	10-29	385	383	373	333	380	372	341	368	363	375	328	342	349	316	334	322	337	335	366	333	410	330	355	8,130	10-29
5	100-299	378	365	397	362	383	328	341	396	371	432	297	335	322	288	299	316	317	332	330	377	377	244	308	7,895	100-299
4	50-99	306	276	353	304	259	296	288	292	305	256	268	327	257	265	297	296	282	284	305	327	307	234	280	6,664	50-99
3	30-49	260	197	268	266	252	277	266	254	266	255	267	232	245	250	251	262	248	271	333	314	339	257	279	6,109	30-49

20	Nagano	55	59	84		87		65	86	64	67	46	54	56	57	64	78	73	61	68	79	86	46	75	1,410	Nagano
13	Tokyo	83	79	81		81		75	81	77	79	82	88	85	112	71	87	91	101	108	80	115	76	73	1,805	Tokyo
15	Niigata	47	48	44		39		43	40	34	42	36	32	47	44	39	36	42	38	46	35	44	44	69	889	Niigata
47	Okinawa	22	28	20		18		21	30	42	39	31	37	33	36	50	51	41	50	49	61	58	53	64	834	Okinawa
14	Kanagawa	52	76	59		69		62	60	67	125	51	68	57	42	46	48	56	56	68	52	73	53	49	1,289	Kanagawa
27	Osaka	32	38	46		48		48	47	51	62	40	54	56	30	49	51	49	58	61	61	60	34	45	1,020	Osaka
7	Fukushima	52	41	57		34		56	40	42	48	43	41	28	37	52	47	31	40	50	59	55	33	45	931	Fukushima
12	Chiba	45	55	43		52		43	51	63	65	56	38	29	31	46	50	47	41	66	52	55	45	44	1,017	Chiba
9	Tochigi	34	50	37		43		39	34	42	41	46	36	30	32	35	35	41	34	40	40	44	33	44	810	Tochigi
28	Hyogo	64	69	59		63		49	57	63	56	50	50	47	44	46	48	38	44	56	59	68	38	41	1,109	Hyogo
10	Gunma	54	57	61		54		47	35	44	46	33	39	35	28	41	38	33	39	37	39	41	31	37	869	Gunma
40	Fukuoka	48	48	49		42		56	55	48	63	39	41	54	57	40	42	49	47	48	53	47	39	35	1,000	Fukuoka
26	Kyoto	37	33	32		31		37	42	38	34	42	44	51	41	35	32	48	37	42	43	38	28	33	798	Kyoto
44	Oita	48	46	42		44		39	33	42	32	29	37	27	36	37	35	35	31	36	30	39	31	32	761	Oita
24	Mie	45	26	38		35		30	28	37	31	37	34	33	21	35	35	25	33	38	37	51	33	32	714	Mie
23	Aichi	52	26	34		35		39	45	36	35	30	42	33	30	34	36	32	52	44	45	57	29	28	794	Aichi
34	Hiroshima	30	21	23		20		15	17	26	16	24	26	22	26	28	17	27	20	31	25	31	23	28	496	Hiroshima
4	Miyagi	28	22	34		31		35	42	32	37	25	44	31	31	32	37	41	33	42	43	28	31	26	705	Miyagi
17	Ishikawa	51	45	71		69		52	44	52	33	40	41	53	37	30	42	38	35	38	43	32	26	25	897	Ishikawa
43	Kumamoto	52	43	58		48		38	34	39	35	36	33	37	33	24	26	28	47	28	29	35	14	25	742	Kumamoto
21	Gifu	51	29	25		41		46	32	49	32	37	42	47	19	40	31	30	29	22	29	31	18	25	705	Gifu
6	Yamagata	22	25	34		31		24	26	31	28	25	17	27	27	41	30	27	29	24	21	24	26	24	563	Yamagata
46	Kagoshima	46	22	36		27		31	33	28	23	30	36	33	32	30	32	30	28	27	22	30	26	23	625	Kagoshima
42	Nagasaki	31	26	37		36		27	24	21	40	35	32	29	32	32	35	28	32	27	31	36	28	22	641	Nagasaki
19	Yamanashi	20	22	32		24		21	18	29	20	20	22	22	17	21	22	25	21	17	29	19	19	21	461	Yamanashi

11	Saitama	10	11	23		15		21	22	24	17	11	17	16	21	23	20	12	20	14	18	26	16	21	378	Saitama
3	Iwate	25	20	28		18		19	22	22	21	26	18	24	15	26	16	16	25	24	10	26	17	20	438	Iwate
2	Aomori	25	15	24		16		28	15	28	28	22	29	23	22	26	27	18	16	27	23	27	15	19	473	Aomori
5	Akita	22	33	20		31		21	15	24	24	19	15	15	18	14	15	18	11	15	23	14	24	19	410	Akita
25	Shiga	13	8	7		10		8	14	18	11	20	11	7	11	12	12	12	14	15	11	12	11	18	255	Shiga
30	Wakayama	57	40	46		35		21	21	22	35	21	21	24	18	29	26	21	17	28	21	29	24	17	573	Wakayama
33	Okayama	30	20	26		31		16	22	19	22	5	22	15	11	13	17	17	16	26	26	36	14	16	420	Okayama
41	Saga	10	17	15		23		22	25	17	18	18	17	17	22	17	21	13	20	20	20	22	16	16	386	Saga
45	Miyazaki	15	15	9		14		22	18	20	17	13	12	14	14	14	12	12	17	19	15	14	14	16	316	Miyazaki
35	Yamaguchi	30	23	27		14		20	18	16	18	22	14	21	12	27	20	18	18	17	17	24	19	13	408	Yamaguchi
18	Fukui	21	22	20		9		18	13	15	24	14	9	26	18	12	15	18	18	22	17	15	16	13	355	Fukui
16	Toyama	17	14	12		15		13	14	17	10	19	24	14	17	17	25	13	7	18	23	22	14	13	338	Toyama
32	Shimane	20	17	23		16		20	22	22	24	13	15	20	10	11	13	13	10	10	15	18	8	12	332	Shimane
8	Ibaraki	17	18	14		8		11	9	18	15	15	19	15	21	11	18	16	15	20	22	12	22	12	328	Ibaraki
29	Nara	10	11	10		10		15	13	13	13	11	15	16	20	10	10	9	16	17	19	23	13	12	286	Nara
38	Ehime	19	19	23		20		24	17	19	18	16	17	16	13	4	17	12	11	8	16	13	10	11	323	Ehime
31	Tottori	13	18	12		15		16	22	15	13	15	18	19	10	12	12	13	14	13	15	10	9	10	294	Tottori
37	Kagawa	18	20	19		9		11	15	10	10	22	10	11	10	8	11	11	11	9	14	12	9	7	257	Kagawa
39	Kochi	23	17	24		20		17	20	22	17	16	14	6	11	12	21	15	9	14	13	13	11	6	321	Kochi
36	Tokushima	9	7	6		10		3	9	9	13	9	7	9	10	10	12	3	9	13	6	8	9	4	175	Tokushima
	total	1,716	1,587	1,765		1,658		1,570	1,643	1,698	1,704	1,485	1,541	1,492	1,444	1,489	1,542	1,495	1,530	1,668	1,638	1,798	1,315	1,446	33,224	total

Data source : <https://anzeninfo.mhlw.go.jp/user/anzen/tok/anst00.htm>

Return to https://www.jisha.or.jp/english/statistics/202211_23.html