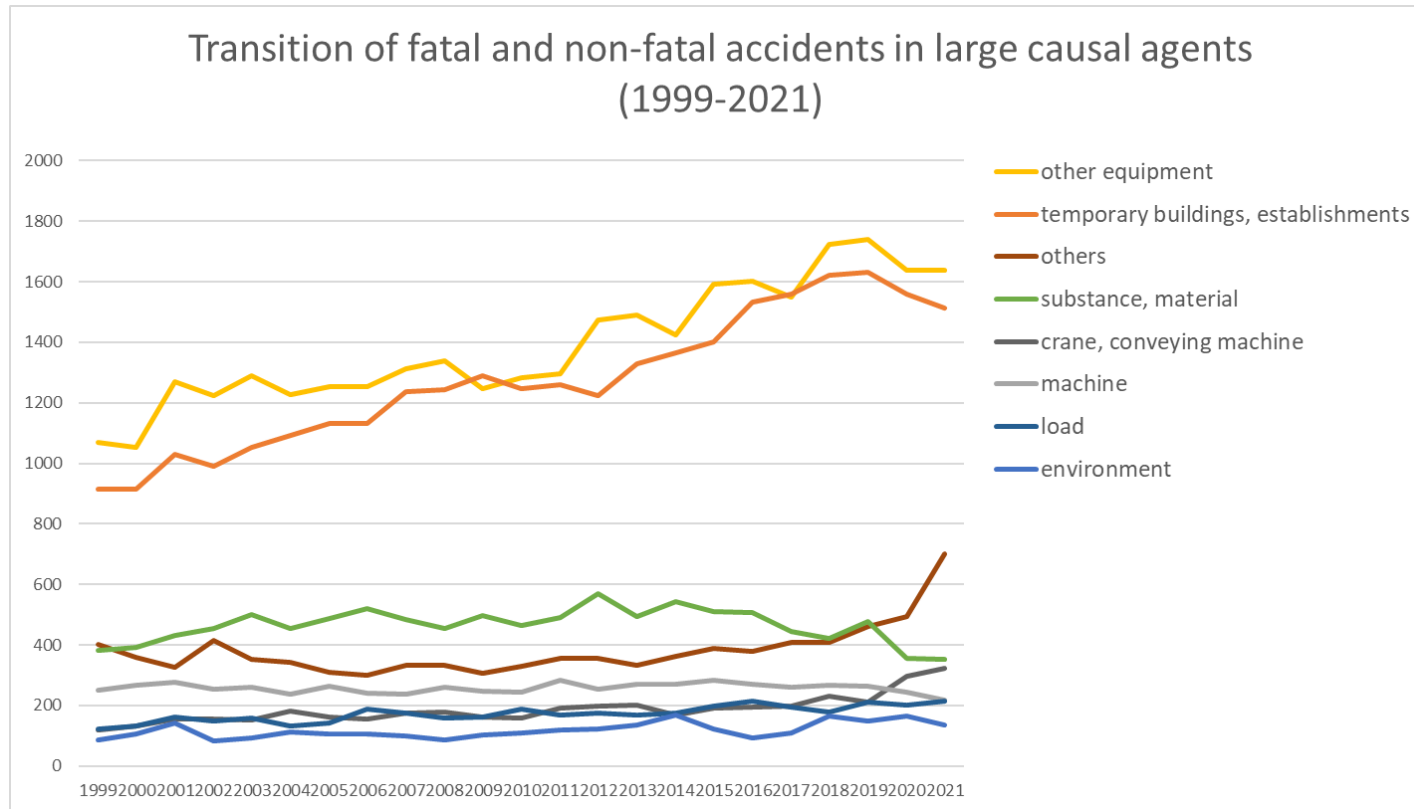
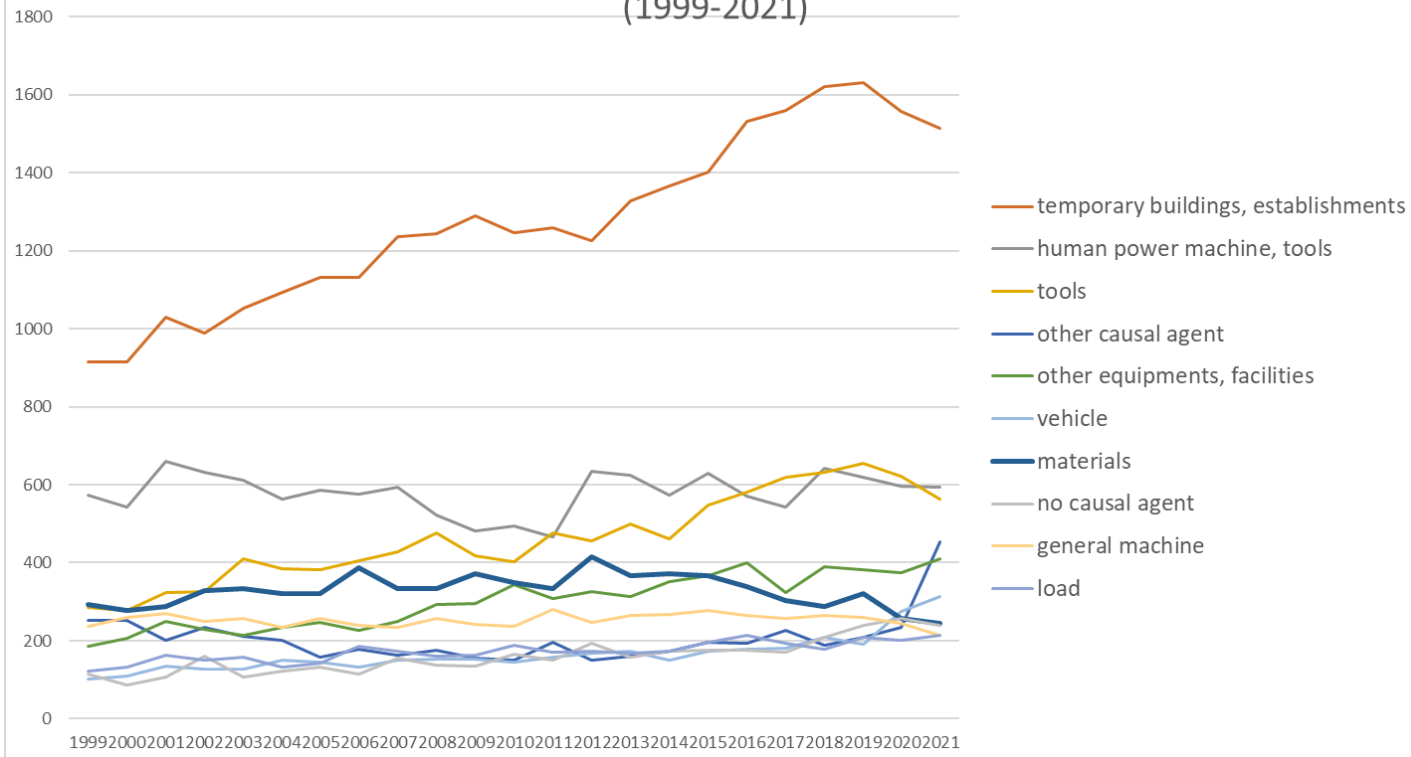


Transition of fatal and non-fatal accidents in each element like as causal agents, type of accidents, etc. in code no. 1402 restaurant (1999-2021)



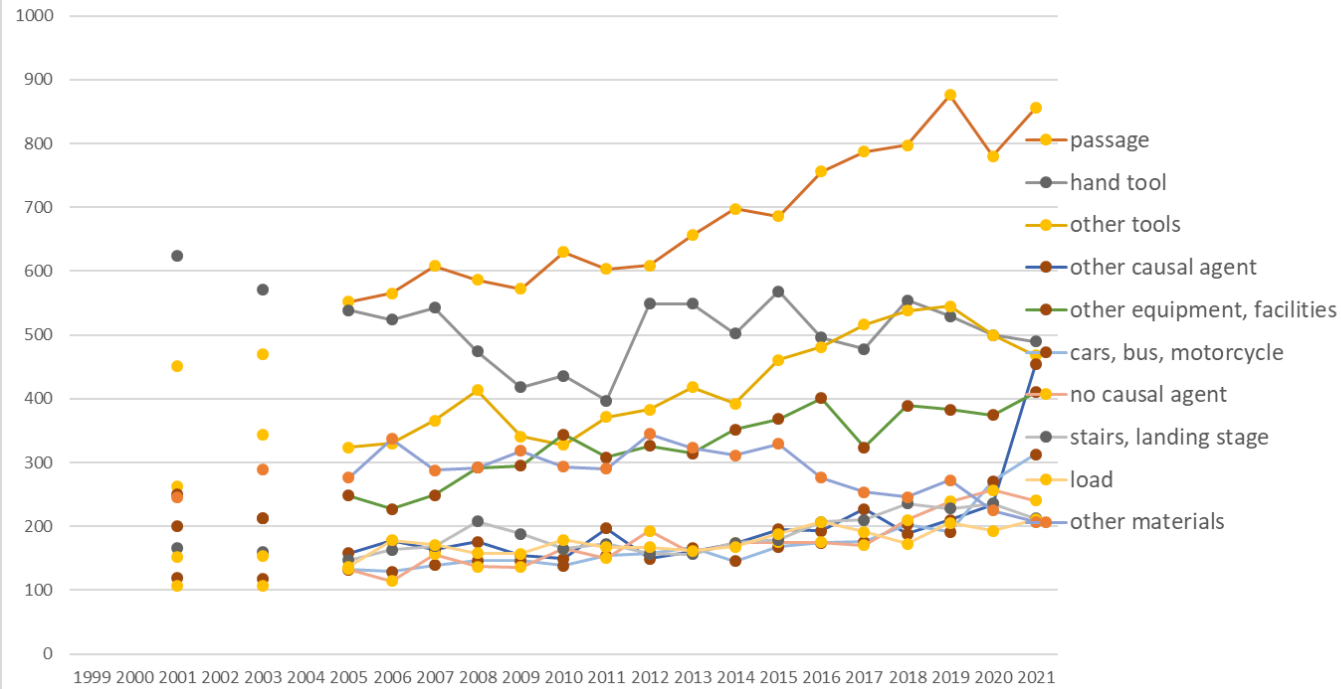
Transition of fatal and non-fatal accidents in large causal agents in code no. 1402 restaurant (1999-2021)

Transition of fatal and non-fatal accidents in top 10 middle causal agents
(1999-2021)



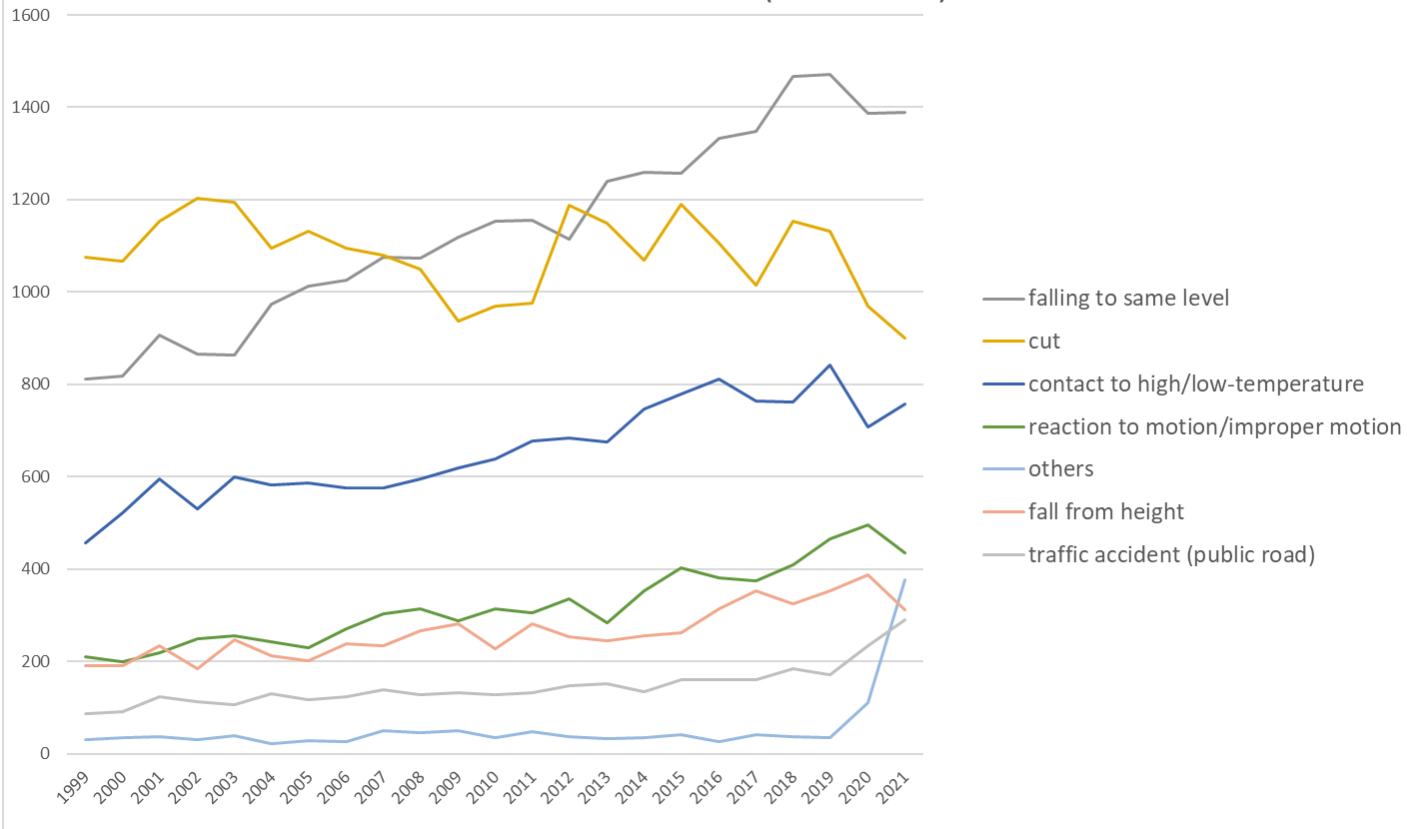
Transition of fatal and non-fatal accidents in middle causal agents in code no. 1402 restaurant (1999-2021)

Transition of fatal and non-fatal accidents in top 10 small causal agents
(1999-2021)



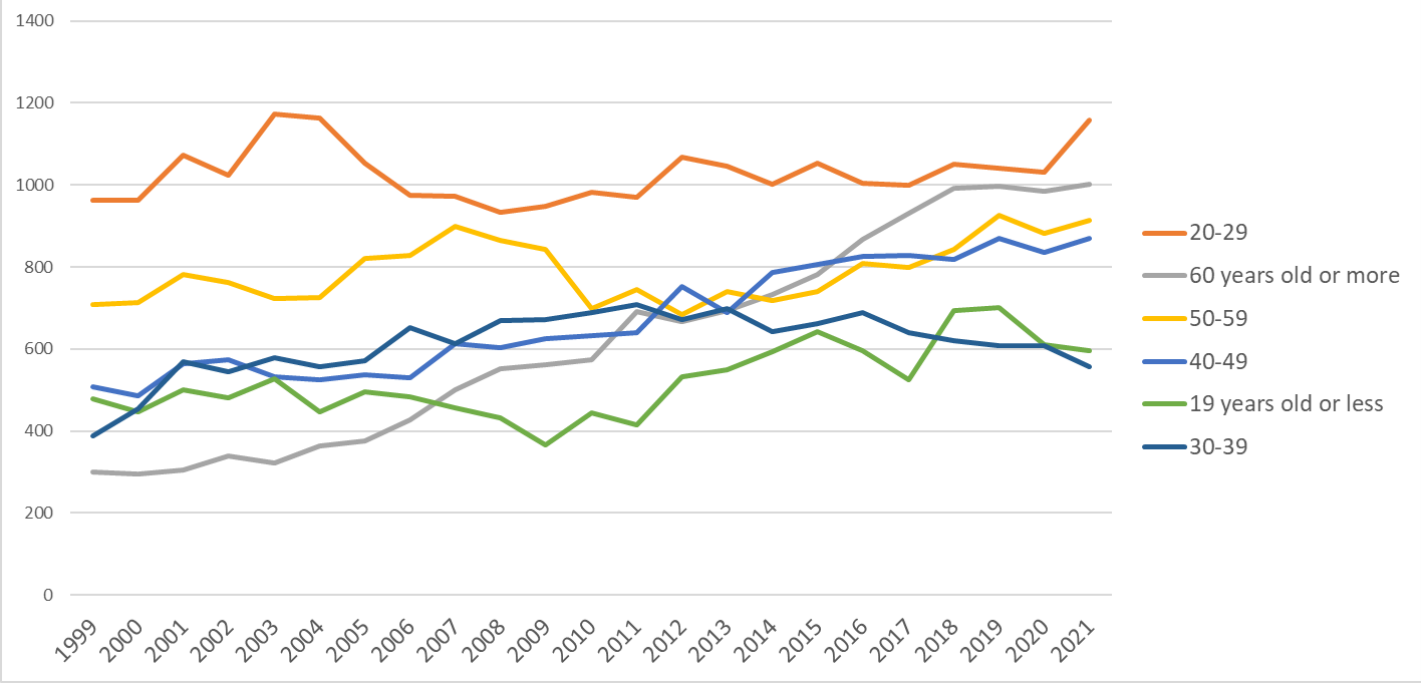
Transition of fatal and non-fatal accidents in small causal agents in code no. 1402 restaurant (1999-2021)

Transition of fatal and non-fatal accidents in top 7 type of accidents
(1999-2021)



Transition of fatal and non-fatal accidents in type of accidents in code no. 1402 restaurant (1999-2021)

Transition of fatal and non-fatal accidents in workers ages (1999-2021)



Transition of fatal and non-fatal accidents in workers ages in code no. 1402 restaurant (1999-2021)

6	300 workers or more	73	88	53	59	66	60	43	52	52	47	51	41	39	40	35	37	35	41	32	32	42	24	19	1,061	300 workers or more
	total	3,347	3,357	3,793	3,725	3,856	3,781	3,856	3,896	4,055	4,055	4,015	4,021	4,170	4,375	4,416	4,477	4,687	4,791	4,721	5,015	5,141	4,953	5,095	97,598	total

Transition of fatal and non-fatal accidents in months in code no. 1402 restaurant (1999-2021)

code	Month	1999	2000	2001	2002	2003	2004	2005	2006	2007	2008	2009	2010	2011	2012	2013	2014	2015	2016	2017	2018	2019	2020	2021	total	Month
8	August	315	318	364	371	377	337	384	369	418	385	373	398	422	432	427	393	452	454	442	459	510	471	561	9,432	August
7	July	301	281	355	362	330	378	358	354	407	362	431	378	416	403	446	408	482	440	448	457	520	463	474	9,254	July
1	January	271	260	355	296	327	280	335	335	302	354	317	332	369	375	390	383	380	418	401	404	398	432	437	8,151	January
5	May	325	316	345	340	313	326	333	361	358	369	361	351	350	370	355	382	382	397	421	451	413	330	434	8,383	May
12	December	219	270	256	280	259	246	286	262	313	262	274	280	296	327	320	344	354	361	353	353	385	441	426	7,167	December
4	April	294	279	311	299	320	309	284	306	327	331	336	316	313	348	349	336	380	390	387	429	414	290	424	7,772	April
3	March	270	261	310	279	325	314	327	314	333	342	332	357	332	365	352	380	378	378	390	398	453	398	416	8,004	March
2	February	268	251	270	284	314	301	285	300	263	323	306	326	311	329	315	399	339	371	349	368	370	415	394	7,451	February
6	June	291	289	364	342	339	367	353	352	355	371	360	347	363	400	385	392	411	427	428	443	470	427	385	8,661	June
9	September	292	289	291	284	324	300	311	319	380	317	295	334	351	368	354	358	382	420	376	490	429	449	383	8,096	September
11	November	255	274	259	296	293	302	285	309	309	290	303	280	310	322	327	345	388	371	329	348	355	401	381	7,332	November
10	October	246	269	313	292	335	321	315	315	290	349	327	322	337	336	396	357	359	364	397	415	424	436	380	7,895	October
	total	3,347	3,357	3,793	3,725	3,856	3,781	3,856	3,896	4,055	4,055	4,015	4,021	4,170	4,375	4,416	4,477	4,687	4,791	4,721	5,015	5,141	4,953	5,095	97,598	total

Transition of fatal and non-fatal accidents in prefectures in code no. 1402 restaurant (1999-2021)

code	Prefecture	1999	2000	2001	2002	2003	2004	2005	2006	2007	2008	2009	2010	2011	2012	2013	2014	2015	2016	2017	2018	2019	2020	2021	total	Prefecture
13	Tokyo	545	453	615		657		630	610	656	686	693	627	625	741	637	713	701	708	678	793	827	733	644	13,972	Tokyo
14	Kanagawa	292	283	318		336		317	326	325	319	324	318	369	389	384	340	340	370	364	378	399	379	395	7,265	Kanagawa
27	Osaka	267	255	308		311		324	321	354	338	357	332	341	363	365	390	405	447	414	488	454	419	382	7,635	Osaka

23	Aichi	148	182	186		190		145	194	189	205	215	218	240	231	265	282	258	271	296	279	309	332	334	4,969	Aichi
11	Saitama	171	150	171		182		194	150	168	163	191	178	178	184	193	205	237	233	228	248	284	299	270	4,277	Saitama
40	Fukuoka	184	176	203		192		192	163	171	182	168	199	184	209	202	210	223	220	213	228	224	251	239	4,233	Fukuoka
12	Chiba	142	181	145		189		149	179	158	198	164	189	172	188	204	196	245	246	211	196	248	257	238	4,095	Chiba
28	Hyogo	122	153	149		161		166	178	171	150	171	155	166	148	184	172	181	164	192	205	192	214	216	3,610	Hyogo
1	Hokkaido	163	161	165		143		170	135	189	157	151	148	148	160	155	181	178	139	177	160	167	143	186	3,376	Hokkaido
22	Shizuoka	100	99	113		92		121	112	130	119	116	122	116	130	129	105	130	151	141	133	133	137	147	2,576	Shizuoka
34	Hiroshima	64	70	81		73		67	82	70	82	86	87	79	91	94	96	106	109	94	103	116	106	115	1,871	Hiroshima
26	Kyoto	72	87	75		109		96	113	108	104	96	112	125	121	110	108	123	117	118	136	114	113	107	2,264	Kyoto
4	Miyagi	55	62	58		74		68	59	77	67	57	70	72	78	89	93	104	105	105	94	92	82	103	1,664	Miyagi
8	Ibaraki	65	80	54		66		83	89	97	82	60	67	88	92	100	106	92	89	100	111	102	83	102	1,808	Ibaraki
15	Niigata	50	54	64		47		61	62	83	82	63	54	56	53	68	72	66	77	82	61	72	62	97	1,386	Niigata
43	Kumamoto	50	46	57		48		57	53	53	61	46	49	51	57	54	61	71	76	62	69	61	60	83	1,225	Kumamoto
21	Gifu	32	29	46		37		52	40	47	42	39	46	54	68	72	49	65	70	74	77	58	60	83	1,140	Gifu
9	Tochigi	40	33	53		40		46	71	52	65	54	52	46	54	63	74	63	64	51	72	82	65	81	1,221	Tochigi
33	Okayama	30	34	43		56		48	46	47	44	55	50	50	53	65	36	44	47	68	83	57	64	79	1,099	Okayama
24	Mie	46	37	53		37		65	70	64	54	69	57	68	61	52	57	72	66	68	81	65	67	71	1,280	Mie
47	Okinawa	21	27	35		21		29	36	49	34	37	37	36	47	41	41	33	39	44	35	55	54	68	819	Okinawa
7	Fukushima	44	45	50		47		53	53	45	71	44	51	55	43	63	57	56	65	58	59	67	59	64	1,149	Fukushima
10	Gunma	66	61	51		63		37	49	52	45	46	47	49	46	57	57	60	73	57	68	63	63	63	1,173	Gunma
35	Yamaguchi	33	23	31		46		39	32	32	26	34	43	46	39	33	34	51	45	43	39	51	35	62	817	Yamaguchi
46	Kagoshima	39	54	48		51		40	40	47	44	38	46	43	49	59	55	56	73	60	50	60	44	60	1,056	Kagoshima
45	Miyazaki	27	30	31		35		28	33	39	31	44	36	26	26	30	35	41	39	37	45	52	49	60	774	Miyazaki
20	Nagano	31	40	51		49		41	48	44	60	47	57	50	50	60	60	59	71	55	53	61	60	59	1,106	Nagano
41	Saga	12	27	37		38		27	27	30	30	22	47	37	23	33	24	34	41	33	34	36	36	59	687	Saga

25	Shiga	19	26	32		32		52	49	48	48	36	44	56	51	45	64	49	55	58	54	46	62	49	975	Shiga
29	Nara	32	26	44		38		40	45	49	56	49	49	49	55	45	45	59	41	46	65	48	47	44	972	Nara
37	Kagawa	23	24	33		29		32	30	29	17	30	30	34	32	27	29	30	31	37	32	44	41	44	658	Kagawa
44	Oita	35	42	46		34		30	59	42	48	45	43	61	45	36	69	42	44	48	36	49	46	40	940	Oita
17	Ishikawa	21	25	25		21		18	17	30	37	32	27	30	34	33	23	36	29	37	52	42	37	40	646	Ishikawa
42	Nagasaki	23	24	29		26		33	41	40	30	34	38	37	34	38	36	39	41	44	38	35	50	39	749	Nagasaki
3	Iwate	32	18	33		28		17	33	26	29	29	19	31	28	33	34	34	30	29	22	35	29	39	608	Iwate
38	Ehime	30	30	37		42		34	45	26	25	42	32	44	47	29	33	41	32	39	36	42	34	37	757	Ehime
16	Toyama	20	20	24		23		26	25	19	29	30	23	29	32	20	22	29	20	38	34	25	28	37	553	Toyama
36	Tokushima	6	10	12		17		18	11	14	18	17	25	14	16	16	13	24	23	20	22	22	25	32	375	Tokushima
39	Kochi	30	38	24		21		28	29	37	19	36	21	39	33	32	32	33	29	24	31	28	25	31	620	Kochi
2	Aomori	32	30	26		23		30	26	26	25	33	30	22	23	26	25	23	30	27	35	29	37	31	589	Aomori
30	Wakayama	22	17	13		24		34	27	25	24	22	29	27	25	37	35	30	33	25	38	29	38	29	583	Wakayama
6	Yamagata	22	15	18		19		14	20	23	19	22	25	31	27	27	24	25	34	28	24	43	28	28	516	Yamagata
32	Shimane	17	19	21		13		19	12	14	15	11	11	17	17	20	14	20	19	13	15	16	19	28	350	Shimane
5	Akita	26	20	18		22		18	17	27	21	16	25	19	25	25	12	26	26	22	24	25	20	26	460	Akita
19	Yamanashi	18	15	27		22		28	14	12	17	19	27	21	19	23	28	21	28	22	36	34	20	22	473	Yamanashi
18	Fukui	18	20	18		21		29	16	15	23	14	14	17	29	23	21	19	20	25	31	36	26	18	453	Fukui
31	Tottori	10	6	22		11		11	9	6	14	11	15	22	9	20	9	13	11	16	12	12	15	14	268	Tottori
	total	3,347	3,357	3,793		3,856		3,856	3,896	4,055	4,055	4,015	4,021	4,170	4,375	4,416	4,477	4,687	4,791	4,721	5,015	5,141	4,953	5,095	90,092	total

Data source : <https://anzeninfo.mhlw.go.jp/user/anzen/tok/anst00.htm>

Return to https://www.jisha.or.jp/english/statistics/202211_23.html