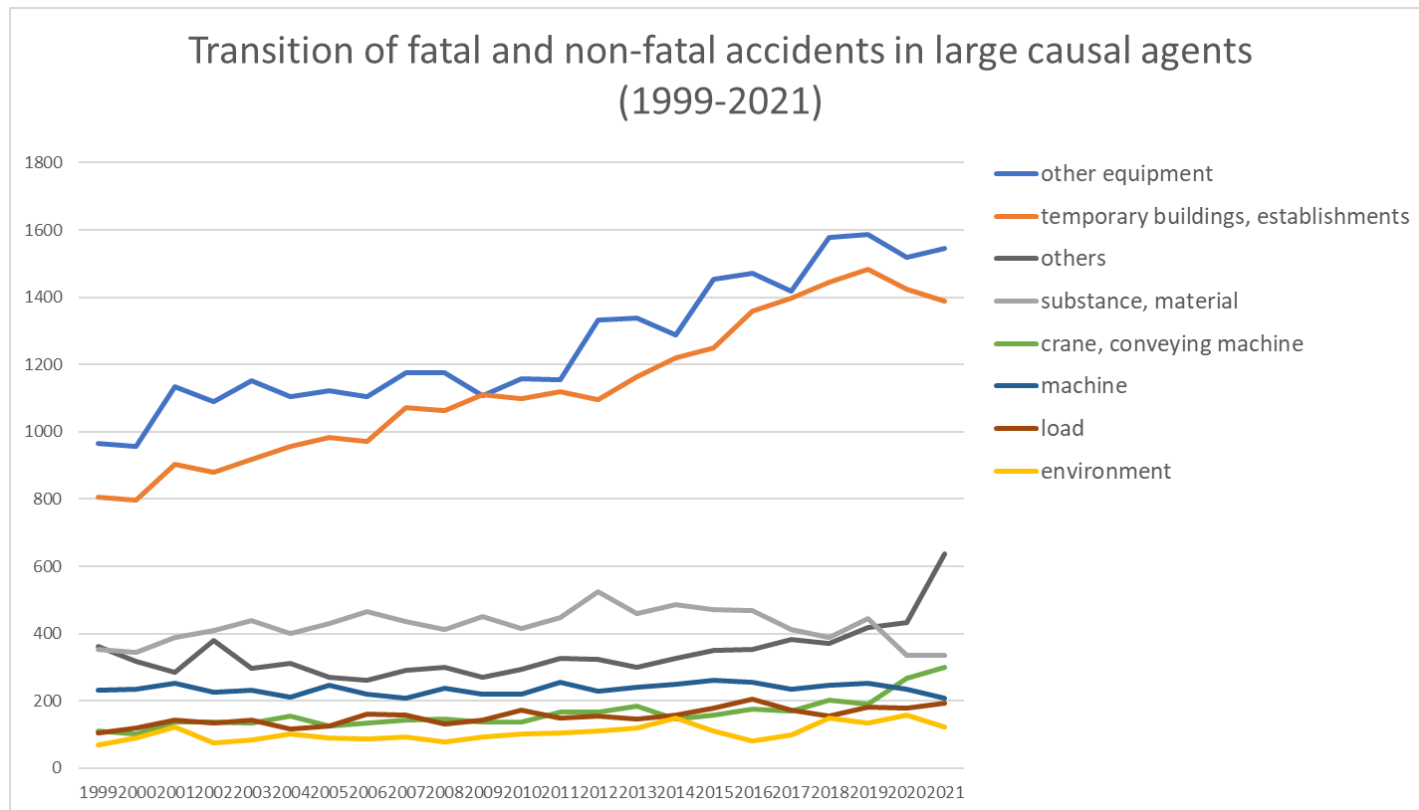
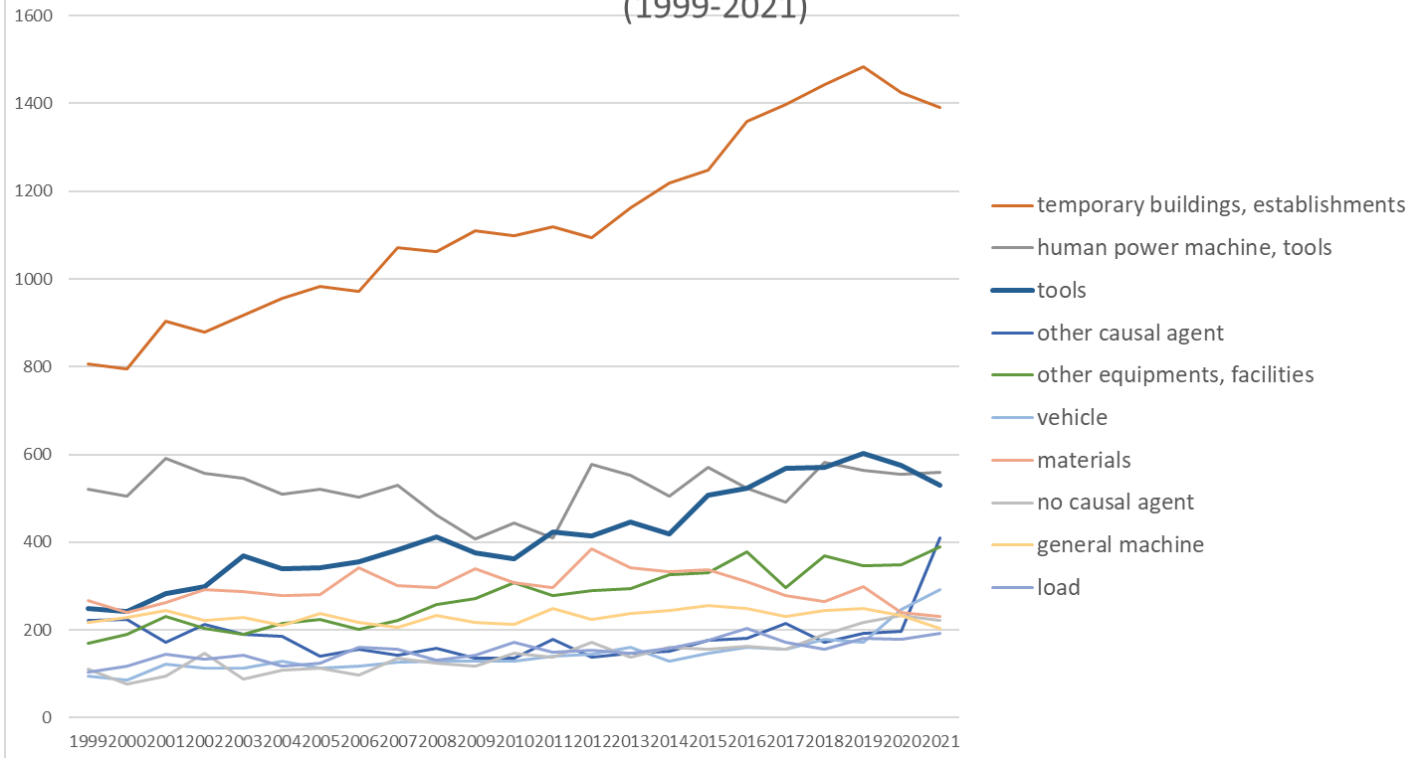


Transition of fatal and non-fatal accidents in each element like as causal agents, type of accidents, etc. in code no. 140201 general restaurant (1999-2021)



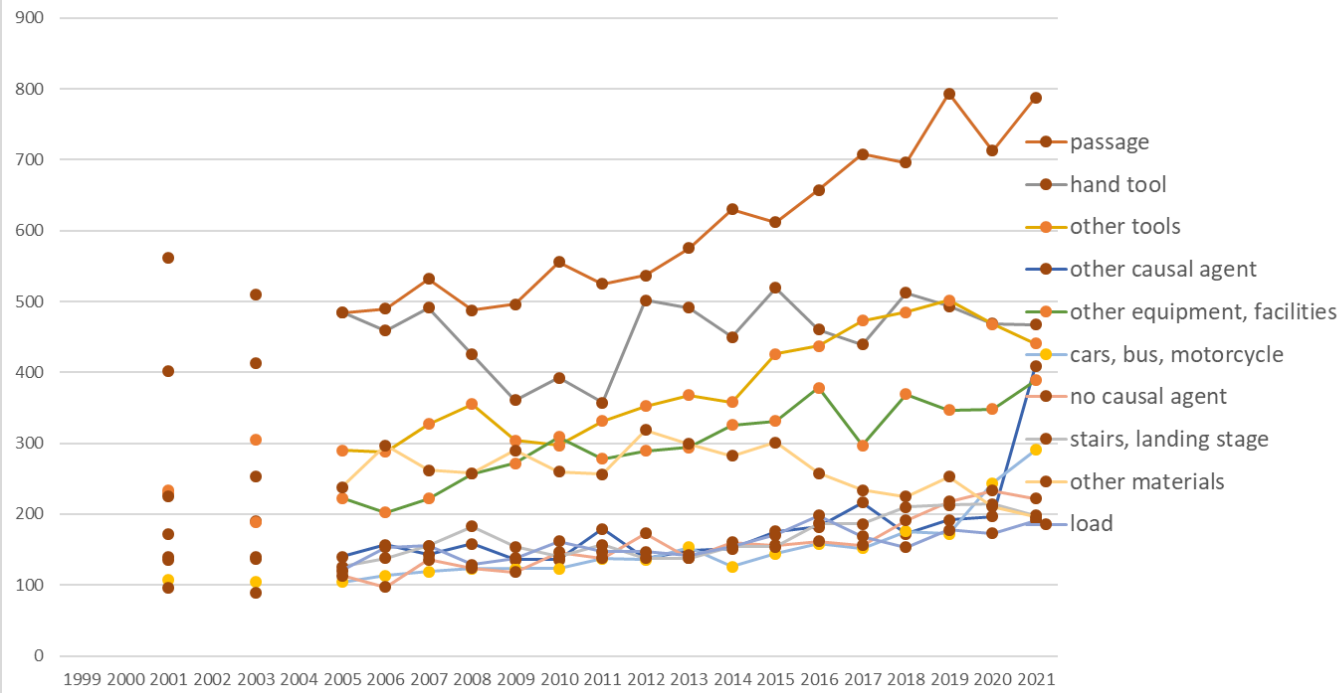
Transition of fatal and non-fatal accidents in large causal agents in code no. 140201 general restaurant (1999-2021)

Transition of fatal and non-fatal accidents in top 10 middle causal agents  
(1999-2021)



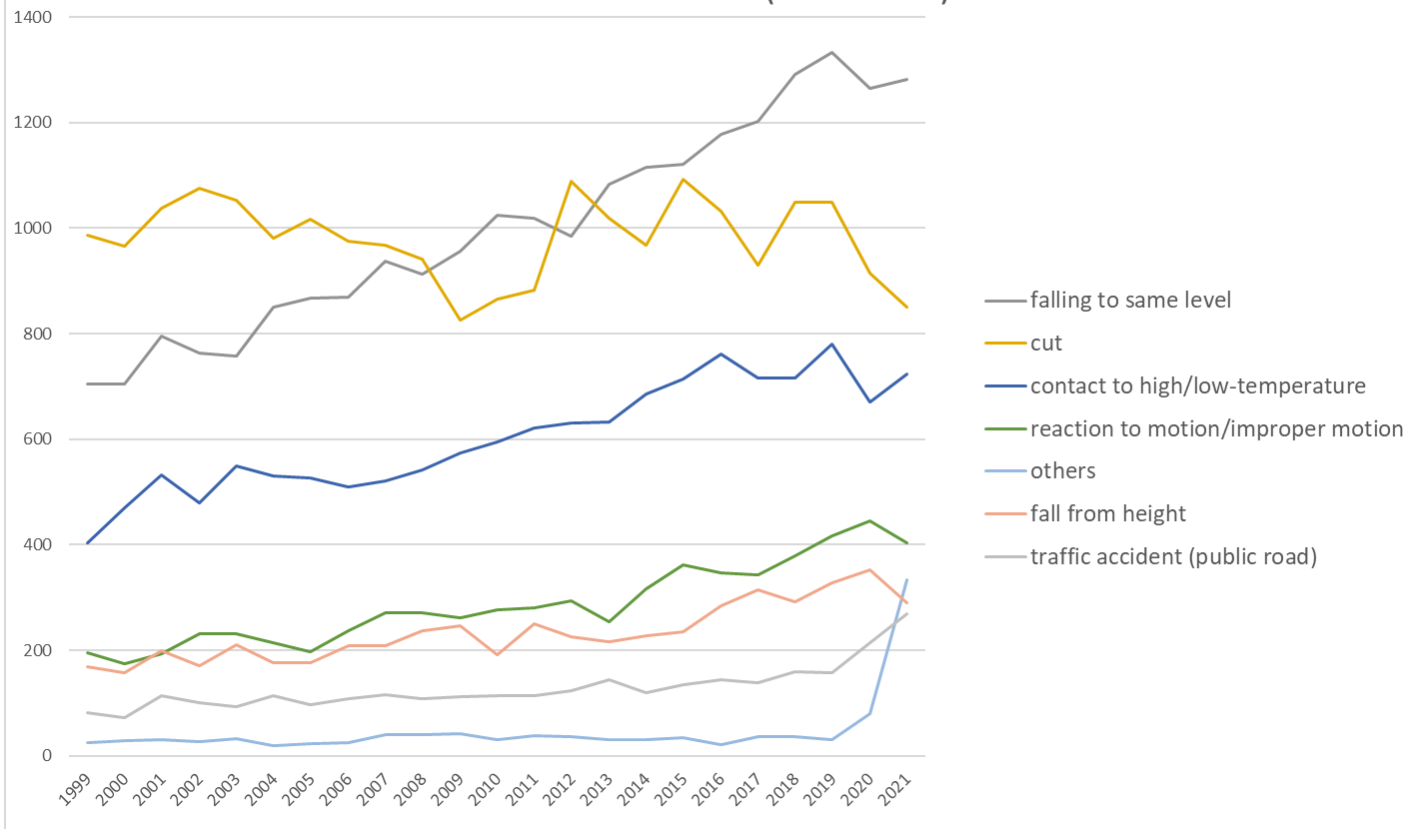
Transition of fatal and non-fatal accidents in middle causal agents in code no. 140201 general restaurant (1999-2021)

### Transition of fatal and non-fatal accidents in top 10 small causal agents (1999-2021)



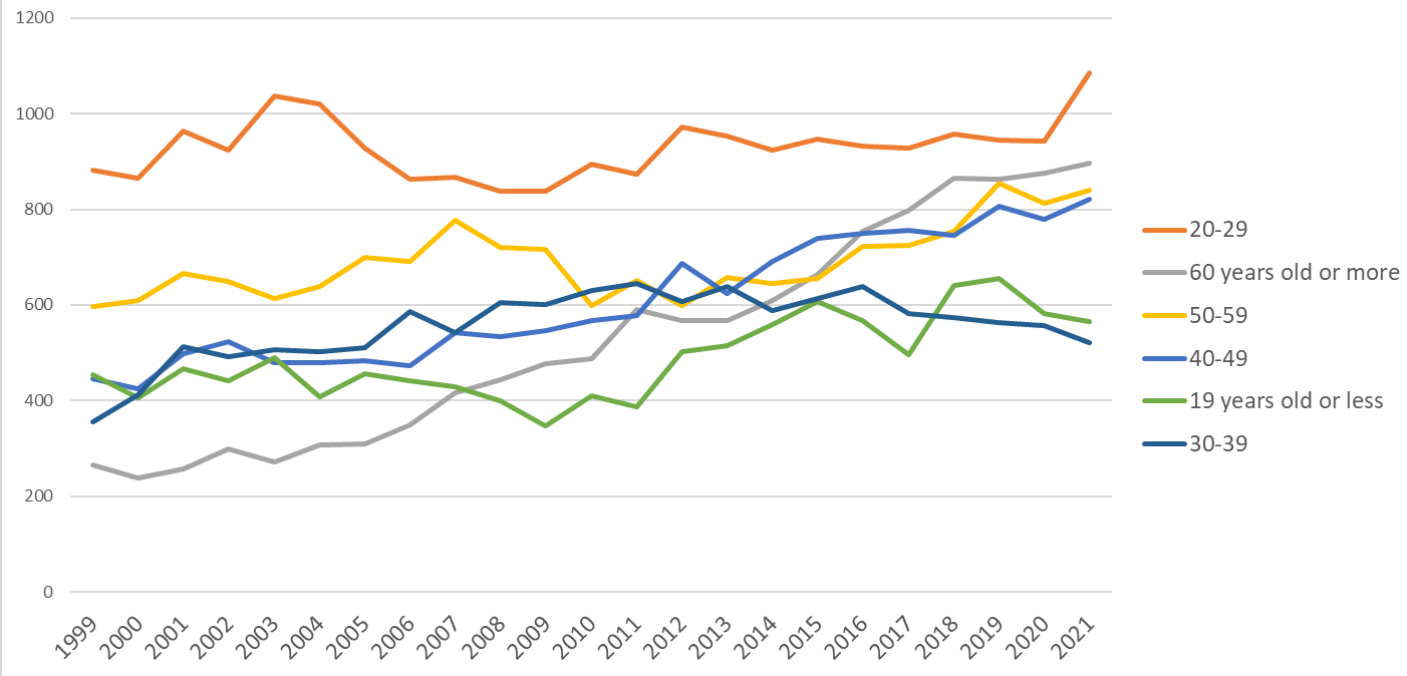
Transition of fatal and non-fatal accidents in small causal agents in code no. 140201 general restaurant (1999-2021)

Transition of fatal and non-fatal accidents in top 7 type of accidents  
(1999-2021)



Transition of fatal and non-fatal accidents in type of accidents in code no. 140201 general restaurant (1999-2021)

Transition of fatal and non-fatal accidents in workers ages (1999-2021)



Transition of fatal and non-fatal accidents in workers ages in code no. 140201 general restaurant (1999-2021)

































5	100-299	150	99	113	95	92	101	110	105	111	104	113	94	114	113	150	162	195	180	142	152	215	180	218	3,108	100-299
6	300 workers or more	67	76	38	51	52	56	38	46	44	40	43	37	35	32	26	29	29	34	26	26	36	20	18	899	300 workers or more
	total	2,998	2,955	3,364	3,328	3,396	3,357	3,387	3,403	3,576	3,540	3,526	3,591	3,723	3,935	3,953	4,018	4,229	4,364	4,284	4,534	4,689	4,549	4,728	87,427	total

Transition of fatal and non-fatal accidents in months in code no. 140201 general restaurant (1999-2021)

code	Month	1999	2000	2001	2002	2003	2004	2005	2006	2007	2008	2009	2010	2011	2012	2013	2014	2015	2016	2017	2018	2019	2020	2021	total	Month
8	August	287	274	330	332	325	307	341	327	379	328	342	353	374	387	379	358	413	419	403	407	463	427	511	8,466	August
7	July	269	245	312	323	285	349	318	314	363	323	379	333	368	346	401	359	430	399	393	419	472	434	448	8,282	July
12	December	194	232	237	257	229	209	237	240	278	235	240	243	273	300	286	314	325	334	310	324	354	391	402	6,444	December
1	January	241	226	314	273	282	255	298	282	262	308	274	308	318	334	338	330	337	376	366	351	366	388	397	7,224	January
5	May	289	274	305	301	275	285	297	303	312	323	316	315	314	340	312	340	339	363	385	409	377	308	395	7,477	May
3	March	246	237	286	252	287	276	297	274	291	302	300	326	291	329	323	353	338	347	362	362	410	368	389	7,246	March
4	April	266	249	269	262	298	279	250	269	282	300	295	280	290	311	314	297	341	351	349	390	371	269	388	6,970	April
6	June	261	254	318	303	305	319	300	299	307	329	319	308	326	359	353	347	371	387	389	400	431	406	362	7,753	June
11	November	228	244	218	255	258	261	250	274	280	255	265	256	280	286	293	310	340	341	306	326	325	364	362	6,577	November
2	February	229	222	238	250	280	268	247	261	231	281	270	287	274	310	281	357	304	338	320	325	335	373	361	6,642	February
10	October	223	241	275	264	286	289	269	282	255	289	276	287	308	304	359	327	331	322	366	382	394	402	357	7,088	October
9	September	265	257	262	256	286	260	283	278	336	267	250	295	307	329	314	326	360	387	335	439	391	419	356	7,258	September
	total	2,998	2,955	3,364	3,328	3,396	3,357	3,387	3,403	3,576	3,540	3,526	3,591	3,723	3,935	3,953	4,018	4,229	4,364	4,284	4,534	4,689	4,549	4,728	87,427	total

Transition of fatal and non-fatal accidents in prefectures in code no. 140201 general restaurant (1999-2021)

code	Prefecture	1999	2000	2001	2002	2003	2004	2005	2006	2007	2008	2009	2010	2011	2012	2013	2014	2015	2016	2017	2018	2019	2020	2021	total	Prefecture
13	Tokyo	514	402	555		579		550	537	582	579	572	556	578	692	551	627	628	659	608	712	754	678	630	12,543	Tokyo
27	Osaka	236	235	270		289		288	291	312	311	329	305	335	333	340	359	368	422	388	456	422	388	363	7,040	Osaka

14	Kanagawa	274	256	298		310		269	290	283	276	289	289	313	334	346	304	307	336	315	339	370	336	351	6,485	Kanagawa
23	Aichi	133	159	162		158		122	165	155	182	193	197	210	206	235	250	232	243	269	252	280	296	306	4,405	Aichi
11	Saitama	158	140	155		161		187	140	157	151	180	170	171	171	183	190	221	225	216	238	273	283	257	4,027	Saitama
40	Fukuoka	171	152	181		166		180	150	152	161	153	182	165	189	184	198	205	211	203	213	207	239	229	3,891	Fukuoka
12	Chiba	130	163	137		174		138	145	151	185	154	180	152	171	192	176	234	217	184	181	231	234	219	3,748	Chiba
28	Hyogo	115	138	131		150		154	164	160	138	151	127	145	132	172	163	166	151	179	197	183	203	205	3,324	Hyogo
1	Hokkaido	145	148	153		135		158	116	172	142	133	138	126	149	132	162	165	124	165	149	158	133	169	3,072	Hokkaido
22	Shizuoka	92	85	103		80		100	98	104	97	95	106	98	114	120	94	116	142	127	112	111	126	137	2,257	Shizuoka
34	Hiroshima	42	54	73		60		63	77	63	69	79	80	71	81	88	94	95	103	89	96	109	102	113	1,701	Hiroshima
15	Niigata	41	45	48		37		42	50	63	59	50	43	46	43	56	61	57	61	71	59	61	51	96	1,140	Niigata
26	Kyoto	59	77	67		96		78	92	94	94	90	94	112	109	96	92	107	102	110	115	103	96	93	1,976	Kyoto
4	Miyagi	51	50	48		61		60	48	68	60	50	58	64	70	84	86	90	97	95	81	73	76	93	1,463	Miyagi
8	Ibaraki	60	71	47		61		76	86	92	70	53	60	81	82	89	92	81	75	80	78	83	72	91	1,580	Ibaraki
21	Gifu	29	23	36		35		43	36	44	33	33	43	49	63	67	49	63	64	72	74	56	57	78	1,047	Gifu
9	Tochigi	32	26	40		36		37	67	46	58	49	46	42	50	54	58	51	57	47	66	73	60	73	1,068	Tochigi
33	Okayama	27	30	40		49		40	33	41	39	45	39	44	48	60	33	40	44	63	77	55	57	69	973	Okayama
43	Kumamoto	43	38	48		35		46	41	40	49	34	40	44	50	45	57	62	70	59	59	55	56	68	1,039	Kumamoto
47	Okinawa	16	21	19		18		29	34	48	32	26	31	33	46	41	40	30	32	38	31	52	49	63	729	Okinawa
24	Mie	38	34	48		31		55	66	60	49	60	51	64	55	48	56	67	65	65	74	63	64	60	1,173	Mie
45	Miyazaki	24	26	28		29		21	24	35	28	37	32	24	23	27	32	37	36	34	44	49	46	59	695	Miyazaki
7	Fukushima	40	42	39		44		51	47	38	64	42	47	54	38	55	46	51	57	50	47	57	52	58	1,019	Fukushima
10	Gunma	50	50	44		57		31	46	48	36	44	46	43	40	53	50	56	69	55	64	57	58	57	1,054	Gunma
35	Yamaguchi	30	18	29		45		34	29	30	25	28	34	39	29	25	30	45	40	38	36	45	31	56	716	Yamaguchi
46	Kagoshima	37	51	42		42		38	31	43	39	31	44	39	35	43	48	50	60	52	46	55	39	52	917	Kagoshima
41	Saga	11	27	36		33		25	23	27	26	19	41	32	21	29	18	25	36	27	30	31	30	51	598	Saga

20	Nagano	30	34	44		42		37	42	42	50	42	50	41	44	52	53	54	62	48	48	53	54	49	971	Nagano
25	Shiga	17	25	27		22		45	33	42	29	25	36	39	43	30	45	40	41	49	45	34	53	43	763	Shiga
29	Nara	30	23	41		28		32	40	47	53	44	48	46	52	44	45	54	41	45	65	46	47	41	912	Nara
37	Kagawa	19	22	29		26		28	28	27	16	30	28	31	29	24	25	28	27	37	26	42	38	41	601	Kagawa
44	Oita	34	36	39		32		20	43	22	37	42	38	43	41	32	67	33	38	40	30	43	44	38	792	Oita
3	Iwate	17	11	28		22		12	29	25	24	25	16	27	25	29	33	30	25	24	22	32	27	38	521	Iwate
38	Ehime	26	27	34		26		32	40	24	21	35	30	38	37	27	27	41	31	38	35	42	33	37	681	Ehime
16	Toyama	13	17	23		22		22	15	9	24	21	19	16	31	19	22	28	20	29	29	23	23	37	462	Toyama
42	Nagasaki	21	23	29		22		27	40	31	26	32	36	29	32	32	27	36	37	41	31	32	46	36	666	Nagasaki
17	Ishikawa	20	22	24		19		16	16	29	35	30	25	28	32	32	22	32	28	35	48	39	37	36	605	Ishikawa
2	Aomori	28	26	22		19		26	21	21	24	30	16	16	16	16	20	12	22	19	24	25	35	29	467	Aomori
36	Tokushima	5	8	6		12		16	7	9	16	14	19	14	14	16	11	20	21	19	20	21	23	29	320	Tokushima
39	Kochi	23	30	23		18		26	24	34	18	33	18	37	33	31	28	31	27	20	30	24	24	28	560	Kochi
6	Yamagata	20	11	18		16		9	18	21	15	20	24	29	23	21	22	23	30	28	21	40	26	26	461	Yamagata
30	Wakayama	20	16	11		23		32	24	23	23	19	26	25	22	32	32	28	30	24	29	24	33	25	521	Wakayama
32	Shimane	16	16	17		9		17	10	12	12	10	11	17	15	17	13	16	15	13	13	10	15	25	299	Shimane
5	Akita	21	16	15		21		18	13	20	17	16	22	19	24	24	11	25	19	19	20	20	19	24	403	Akita
19	Yamanashi	17	15	23		20		25	11	11	15	18	25	20	18	22	26	20	24	20	33	32	20	21	436	Yamanashi
18	Fukui	15	12	13		15		22	14	13	19	10	10	14	22	19	15	17	18	21	30	30	26	16	371	Fukui
31	Tottori	8	4	21		11		10	9	6	14	11	15	20	8	19	9	12	10	16	9	11	14	13	250	Tottori
	total	2,998	2,955	3,364		3,396		3,387	3,403	3,576	3,540	3,526	3,591	3,723	3,935	3,953	4,018	4,229	4,364	4,284	4,534	4,689	4,549	4,728	80,742	total

Data source : <https://anzeninfo.mhlw.go.jp/user/anzen/tok/anst00.htm>

Return to [https://www.jisha.or.jp/english/statistics/202211\\_23.html](https://www.jisha.or.jp/english/statistics/202211_23.html)