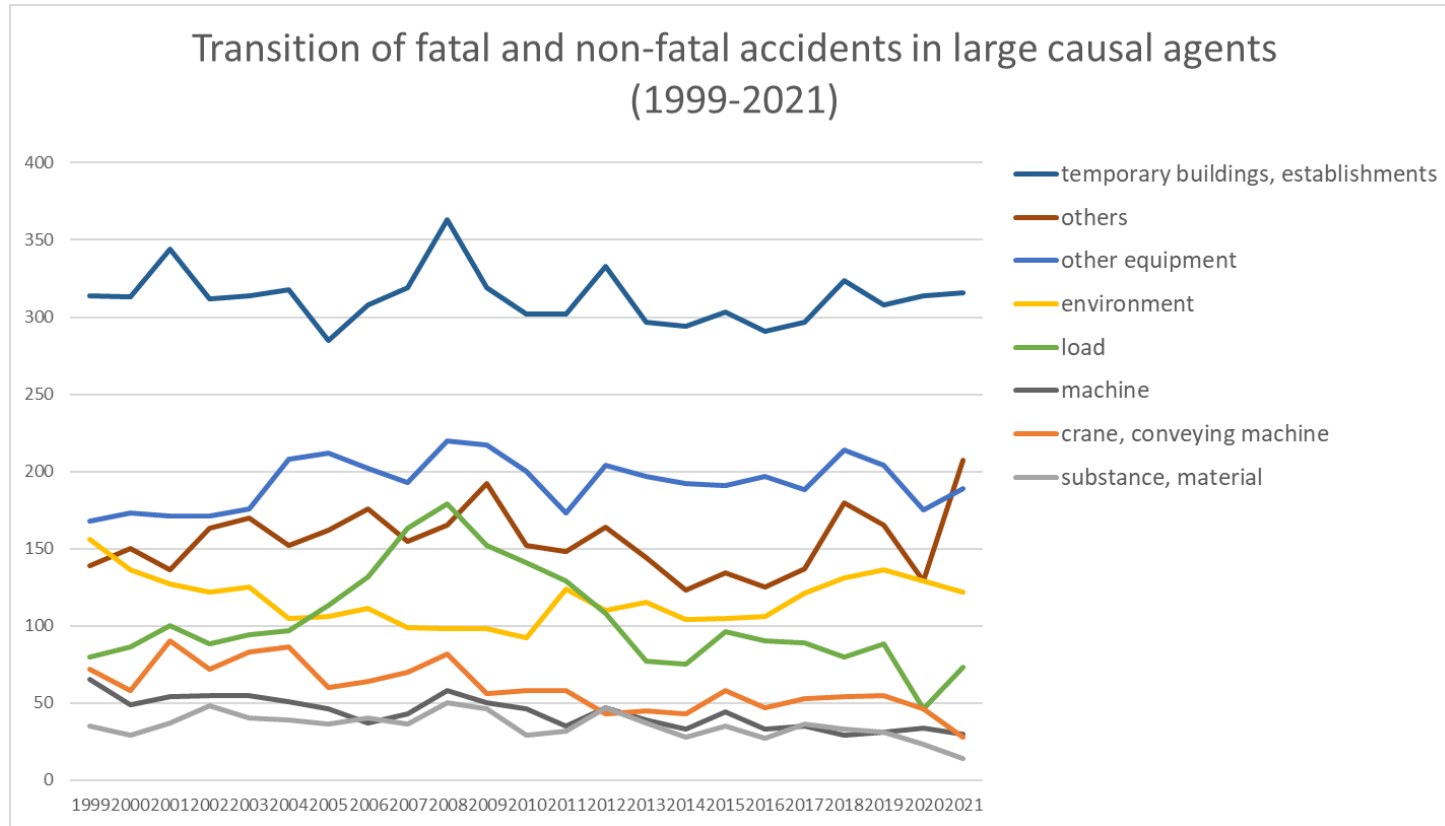
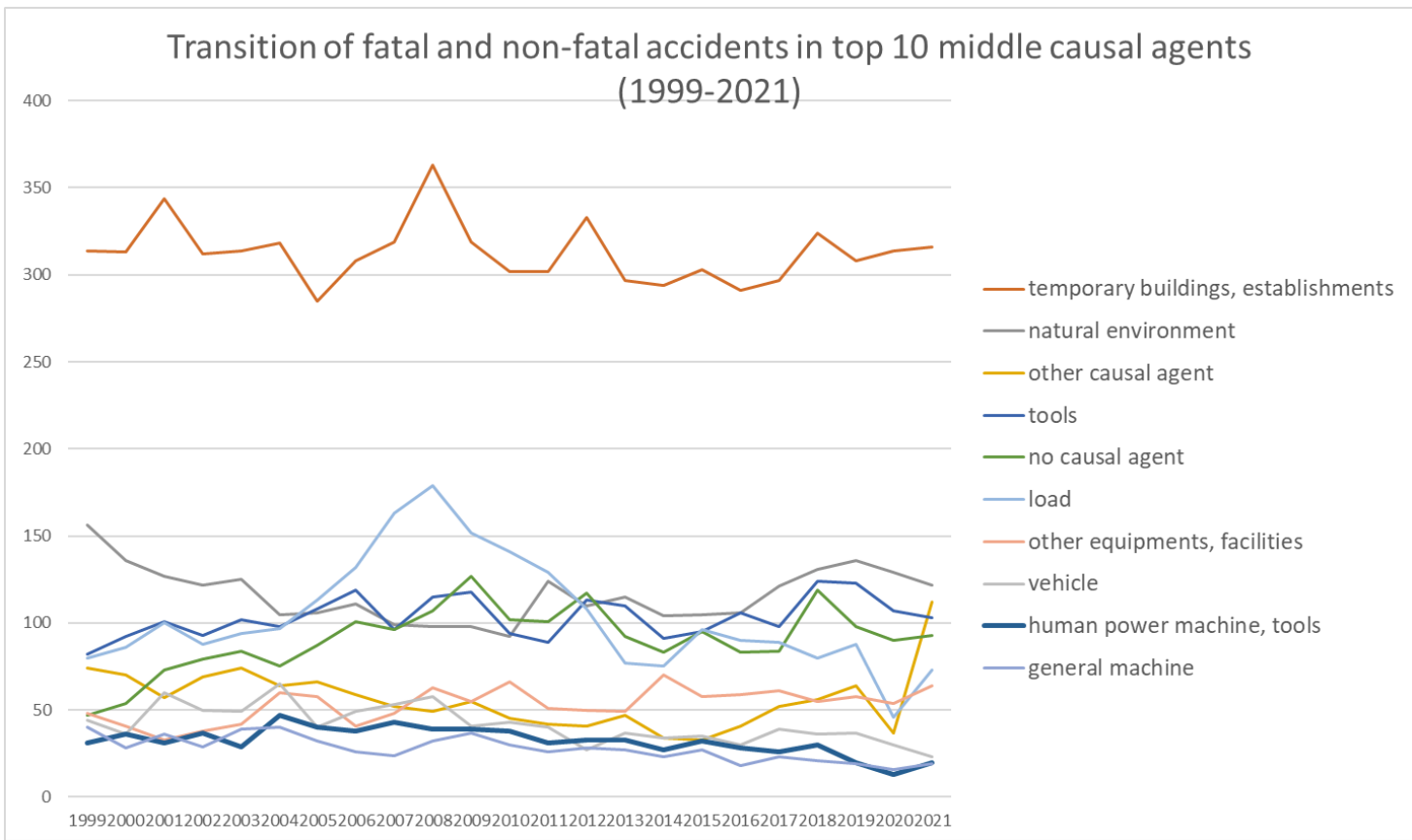


Transition of fatal and non-fatal accidents in each element like as causal agents, type of accidents, etc. in code no. 140309 other amusement service (1999-2021)

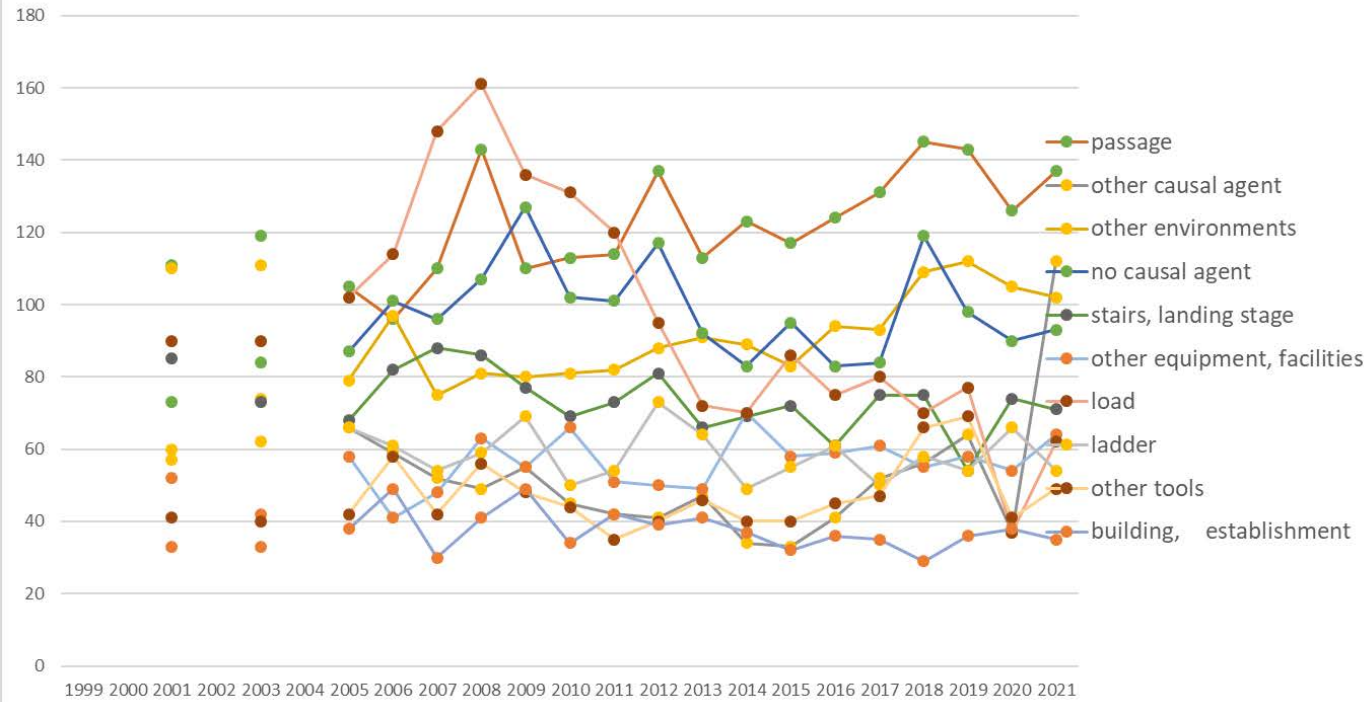


Transition of fatal and non-fatal accidents in large causal agents in code no. 140309 other amusement service (1999-2021)

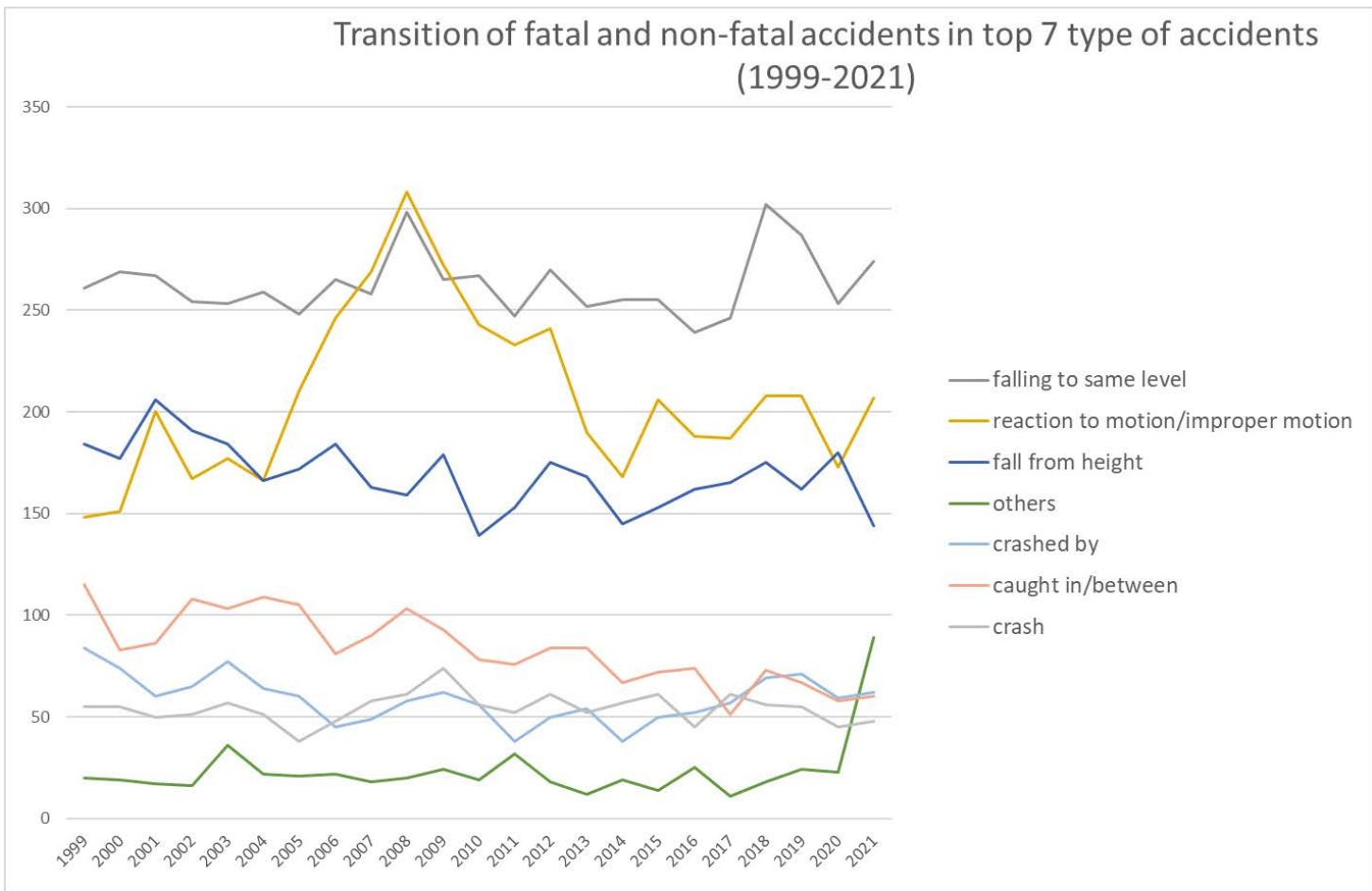


Transition of fatal and non-fatal accidents in middle causal agents in code no. 140309 other amusement service (1999-2021)

Transition of fatal and non-fatal accidents in top 10 small causal agents
(1999-2021)

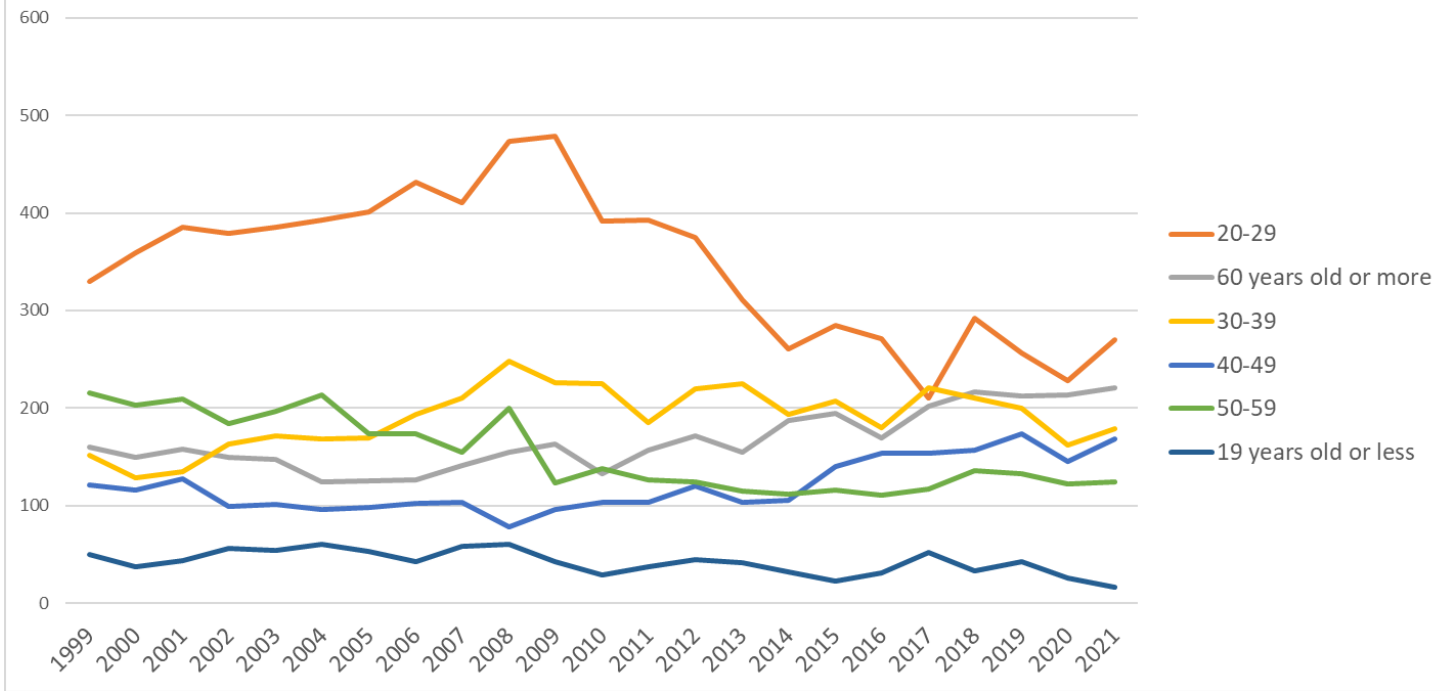


Transition of fatal and non-fatal accidents in small causal agents in code no. 140309 other amusement service (1999-2021)



Transition of fatal and non-fatal accidents in type of accidents in code no. 140309 other amusement service (1999-2021)

Transition of fatal and non-fatal accidents in workers ages (1999-2021)



Transition of fatal and non-fatal accidents in workers ages in code no. 140309 other amusement service (1999-2021)

Transition of fatal and non-fatal accidents in workers scales in code no. 140309 other amusement service (1999-2021)

code	Workers scale	1999	2000	2001	2002	2003	2004	2005	2006	2007	2008	2009	2010	2011	2012	2013	2014	2015	2016	2017	2018	2019	2020	2021	total	Workers scale
2	10-29	298	270	347	297	294	310	322	288	294	312	283	287	285	329	327	320	325	294	323	336	335	299	335	7,110	10-29
3	30-49	170	179	154	191	233	239	225	291	242	332	294	291	266	272	204	196	212	209	204	233	229	201	218	5,285	30-49
4	50-99	135	130	135	144	151	139	143	147	170	224	222	156	151	154	157	137	134	142	153	144	168	125	154	3,515	50-99
1	9 workers or less	209	201	196	192	179	170	180	152	182	142	150	124	156	160	130	124	155	154	153	168	146	159	141	3,723	9 workers or less
5	100-299	134	104	122	102	117	118	90	114	133	134	141	122	105	96	101	91	99	78	87	107	102	84	104	2,485	100-299
6	300 workers or more	83	110	105	105	83	80	60	78	57	71	40	40	38	45	32	24	41	39	36	57	38	28	27	1,317	300 workers or more
	total	1,029	994	1,059	1,031	1,057	1,056	1,020	1,070	1,078	1,215	1,130	1,020	1,001	1,056	951	892	966	916	956	1,045	1,018	896	979	23,435	total

Transition of fatal and non-fatal accidents in months in code no. 140309 other amusement service (1999-2021)

code	Month	1999	2000	2001	2002	2003	2004	2005	2006	2007	2008	2009	2010	2011	2012	2013	2014	2015	2016	2017	2018	2019	2020	2021	total	Month
1	January	103	71	116	109	120	90	115	101	102	113	117	124	113	117	115	89	97	103	96	133	78	109	111	2,442	January
8	August	97	83	74	79	88	90	71	87	86	97	86	82	76	109	73	86	87	66	72	97	107	81	107	1,981	August
3	March	100	98	84	80	84	96	80	89	94	107	97	93	89	74	64	68	86	84	86	82	78	66	92	1,971	March
4	April	78	81	102	92	96	81	79	71	97	93	86	84	78	97	91	69	73	68	61	70	77	60	90	1,874	April
7	July	80	82	91	81	82	82	77	82	103	97	94	73	98	112	78	71	96	75	73	88	90	71	85	1,961	July
5	May	89	78	94	79	105	100	77	87	91	105	124	84	62	70	94	83	88	80	81	86	89	53	84	1,983	May
12	December	74	86	78	76	76	83	103	65	80	101	98	67	78	77	68	86	63	89	70	76	92	91	73	1,850	December
6	June	70	96	77	78	90	97	87	98	99	113	87	85	81	96	78	62	84	72	83	68	95	88	72	1,956	June
2	February	95	95	98	89	81	102	109	118	97	111	115	103	93	94	74	73	87	82	94	97	89	83	71	2,150	February
9	September	90	74	85	91	80	71	87	84	84	88	71	82	75	69	69	61	78	76	89	97	74	81	71	1,827	September
10	October	82	82	96	81	77	91	65	104	77	101	70	82	75	70	83	66	60	68	78	85	73	60	66	1,792	October
11	November	71	68	64	96	78	73	70	84	68	89	85	61	83	71	64	78	67	53	73	66	76	53	57	1,648	November

total	1,029	994	1,059	1,031	1,057	1,056	1,020	1,070	1,078	1,215	1,130	1,020	1,001	1,056	951	892	966	916	956	1,045	1,018	896	979	23,435	total
-------	-------	-----	-------	-------	-------	-------	-------	-------	-------	-------	-------	-------	-------	-------	-----	-----	-----	-----	-----	-------	-------	-----	-----	--------	-------

Transition of fatal and non-fatal accidents in prefectures in code no. 140309 other amusement service (1999-2021)

code	Prefecture	1999	2000	2001	2002	2003	2004	2005	2006	2007	2008	2009	2010	2011	2012	2013	2014	2015	2016	2017	2018	2019	2020	2021	total	Prefecture
13	Tokyo	65	70	77		70		70	77	81	81	70	78	91	88	86	65	83	87	57	104	72	68	92	1,632	Tokyo
14	Kanagawa	46	57	46		46		43	40	58	47	46	49	41	45	49	48	45	46	35	55	51	49	69	1,011	Kanagawa
27	Osaka	36	56	68		64		54	52	33	67	63	54	46	56	48	55	54	61	49	57	64	34	56	1,127	Osaka
12	Chiba	36	32	27		26		24	40	55	47	39	58	59	53	58	55	43	54	61	50	67	66	56	1,006	Chiba
11	Saitama	25	24	23		34		35	40	41	50	53	40	49	47	32	33	41	30	39	58	48	46	51	839	Saitama
1	Hokkaido	67	75	70		90		88	83	94	103	75	64	60	63	70	71	60	56	57	58	69	53	47	1,473	Hokkaido
40	Fukuoka	34	36	40		40		45	42	40	57	50	32	34	33	45	31	46	32	35	45	36	36	39	828	Fukuoka
28	Hyogo	40	43	33		28		40	27	40	44	41	27	29	33	35	45	35	40	44	48	42	30	34	778	Hyogo
23	Aichi	54	67	62		46		30	59	41	47	59	54	45	55	40	41	50	40	48	36	48	38	30	990	Aichi
22	Shizuoka	35	28	34		28		44	36	36	44	73	45	41	53	30	33	26	32	24	32	28	36	30	768	Shizuoka
9	Tochigi	16	14	23		18		13	18	19	30	18	29	16	20	15	12	24	19	29	20	14	21	29	417	Tochigi
7	Fukushima	34	24	17		22		20	19	18	27	29	29	26	22	29	12	19	17	10	24	12	13	28	451	Fukushima
10	Gunma	34	32	20		31		23	32	29	35	38	28	17	33	33	26	27	23	26	24	35	23	26	595	Gunma
4	Miyagi	14	26	31		23		23	28	26	34	31	19	25	17	23	20	25	20	18	20	29	22	25	499	Miyagi
15	Niigata	33	26	39		35		19	53	19	31	39	29	20	28	26	22	31	22	18	22	23	17	22	574	Niigata
3	Iwate	30	18	17		35		26	17	23	22	17	18	23	23	12	10	20	16	23	14	12	22	21	419	Iwate
46	Kagoshima	23	10	27		19		21	16	16	13	13	16	13	19	17	16	16	16	17	16	14	15	21	354	Kagoshima
8	Ibaraki	14	17	18		12		17	18	20	8	21	23	23	18	17	15	14	22	27	32	25	14	20	395	Ibaraki
33	Okayama	10	11	8		9		8	7	12	18	8	11	9	7	7	11	14	14	14	14	15	6	20	233	Okayama
20	Nagano	28	18	23		25		23	17	22	23	21	18	15	23	13	18	20	21	25	22	20	13	18	426	Nagano
26	Kyoto	14	10	12		20		13	17	12	10	13	11	19	15	16	15	20	8	15	28	24	16	17	325	Kyoto

34	Hiroshima	25	16	36		34		31	18	29	28	22	23	26	28	27	19	14	11	20	10	22	13	15	467	Hiroshima
6	Yamagata	11	22	24		20		16	14	9	16	14	11	12	11	12	11	11	12	8	15	14	8	15	286	Yamagata
42	Nagasaki	11	10	22		11		14	11	21	10	8	11	10	8	7	4	5	6	8	9	9	11	14	220	Nagasaki
21	Gifu	37	40	42		20		24	35	39	33	23	25	22	30	24	17	25	18	24	17	18	28	13	554	Gifu
47	Okinawa	5	10	10		9		9	12	10	11	4	15	10	20	12	13	9	11	11	14	18	11	12	236	Okinawa
44	Oita	17	20	12		12		15	23	18	18	14	14	15	14	10	10	17	16	13	13	19	12	11	313	Oita
25	Shiga	12	7	7		4		8	2	9	10	9	7	10	10	6	8	7	6	11	6	10	9	11	169	Shiga
45	Miyazaki	19	18	11		17		23	17	19	18	9	12	14	12	7	8	14	15	10	10	10	9	10	282	Miyazaki
38	Ehime	15	11	16		15		13	16	12	20	10	7	14	8	5	6	7	10	10	8	7	6	10	226	Ehime
39	Kochi	9	5	10		15		7	9	12	9	12	12	8	9	14	5	12	9	18	7	14	11	10	217	Kochi
16	Toyama	6	13	13		11		13	6	5	10	14	3	10	6	5	10	11	11	9	12	10	7	10	195	Toyama
35	Yamaguchi	6	8	8		7		13	13	8	15	12	3	10	5	6	6	9	5	11	5	7	11	9	177	Yamaguchi
18	Fukui	8	8	5		9		6	4	8	8	8	8	7	6	12	6	7	13	6	12	8	7	9	165	Fukui
24	Mie	28	18	19		20		16	19	22	16	16	19	18	18	18	11	16	10	12	20	18	14	8	356	Mie
17	Ishikawa	16	6	12		6		4	5	10	4	8	8	19	8	6	6	7	7	9	10	6	8	8	173	Ishikawa
41	Saga	8	12	9		8		10	11	11	11	12	8	4	8	6	5	6	8	4	4	10	11	7	173	Saga
29	Nara	4	6	2		5		5	4	8	7	9	12	7	12	10	5	4	10	12	13	13	17	7	172	Nara
19	Yamanashi	4	1	4		8		16	10	13	16	15	9	3	8	8	7	6	4	4	4	5	2	7	154	Yamanashi
32	Shimane	11	7	4		13		4	8	4	8	10	4	9	8	5	3	7	1	13	8	3	6	7	143	Shimane
31	Tottori	3	1	2		3		4	3	5	2	6	12	9	5	3	8	5	5	4	5	1	5	7	98	Tottori
43	Kumamoto	41	25	28		33		34	32	15	29	22	22	23	25	16	24	23	15	24	24	13	11	6	485	Kumamoto
2	Aomori	12	9	13		17		17	10	15	23	14	14	12	15	9	11	5	7	12	7	8	10	5	245	Aomori
5	Akita	9	12	13		13		11	11	13	15	8	6	4	10	7	12	7	10	8	14	7	13	5	208	Akita
36	Tokushima	9	4	8		10		9	14	11	16	9	9	8	7	7	9	6	4	8	4	5	4	5	166	Tokushima

30	Wakayama	2	1	5		5		4	11	5	6	10	6	10	6	2	5	8	8	6	5	5	3	5	118	Wakayama
37	Kagawa	13	10	9		11		15	14	12	18	15	8	6	8	6	9	5	8	10	10	10	11	2	210	Kagawa
	total	1,029	994	1,059		1,057		1,020	1,070	1,078	1,215	1,130	1,020	1,001	1,056	951	892	966	916	956	1,045	1,018	896	979	21,348	total

Data source : <https://anzeninfo.mhlw.go.jp/user/anzen/tok/anst00.htm>

Return to https://www.jisha.or.jp/english/statistics/202211_23.html